



Flight Procedures Cover Page	Task Action: FLIGHT CHECK	Task Type: IAP	Estimated Chart Date: 12/26/2024	APWS Task ID: 4EE6D2A4AC46458E8E50199FCAC31088	APWS Project ID: CDA0428A7E3E4A80ACC23E4382B3C7CA
Procedure: RNAV (GPS) RWY 27 AMDT 1		Enroute: NO	Specialist: Suppes, Jill		Agreement Number:
Airport ID: KGLR			Airport City: GAYLORD		State: MI
Facility ID:	Facility Type:	Flight Inspection Remark Type: New FC Slot			
<div>Procedure Comments:</div> <div>UTILIZED ACTIVE AIRNAV DATA FOR KGLR AIRPORT.</div> <div>DELETED GLR FEEDER DUE TO VOR MON.</div> <div>NEW LNAV FINAL CONTROLLING OBSTACLE: TOWER (26-000556) 1860 MSL.</div> <div>CONTACT ROBERT HAMILTON: AJV-A433, 405-954-4608</div> <div><div>QUALITY 33 CHECKED</div><div>QUALITY 19 CHECKED</div></div>					

WAAS CH 56327 W27A	APP CRS 276°	Rwy Idg 6579 TDZE 1328 Apt Elev 1328
--	------------------------	---

RNAV (GPS) RWY 27
GAYLORD RGNL (GLR)

RNP APCH - GPS.	
-----------------	--

 Circling Rwy 18, 30 NA at night. Rwy 27 helicopter visibility reduction below $\frac{3}{4}$ SM NA.
 VDP NA when using GOV altimeter setting. When local altimeter setting not received, use GOV altimeter setting: increase LPV DA to 1648 feet; increase all MDAs 80 feet and LNAV visibility Cats C and D $\frac{3}{4}$ SM and Circling visibility Cats C and D $\frac{1}{4}$ SM.

MISSED APPROACH: Climb to 3000 direct WODIV and hold.

ASOS
118,375

MINNEAPOLIS CENTER
134.6 354.05

UNICOM
122.8 (CTAF) **L**

PROTOTYPE-
NOT FOR NAVIGATION

MISSED APCH FIX

WODIV
(090°T)
096°
276°
(270°T)
4 NM

ELEV 1328

TDZE 1328

REIL Rwy 18, 27 and 36 **L**
MIRL Rwy 18-36 **L**
HIRL Rwy 9-27 **L**

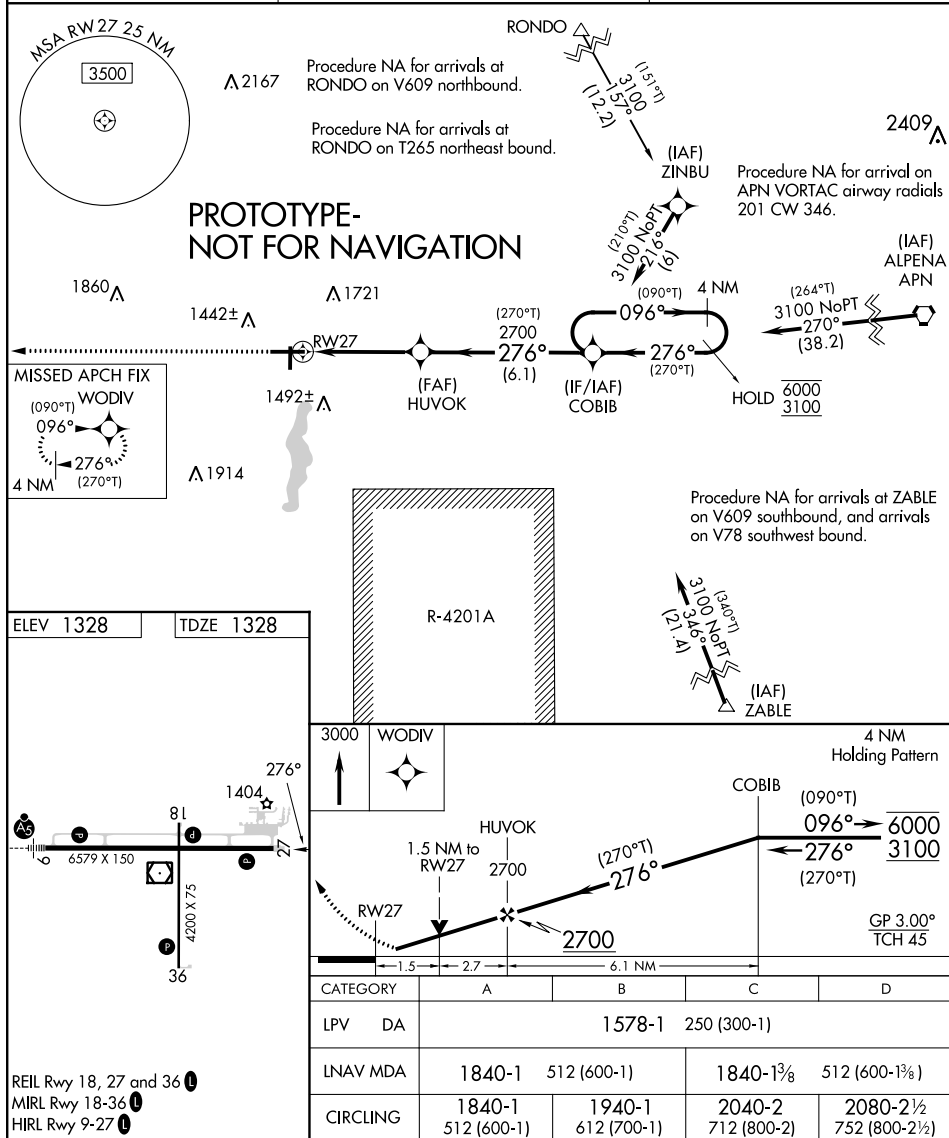
GAYLORD, MICHIGAN

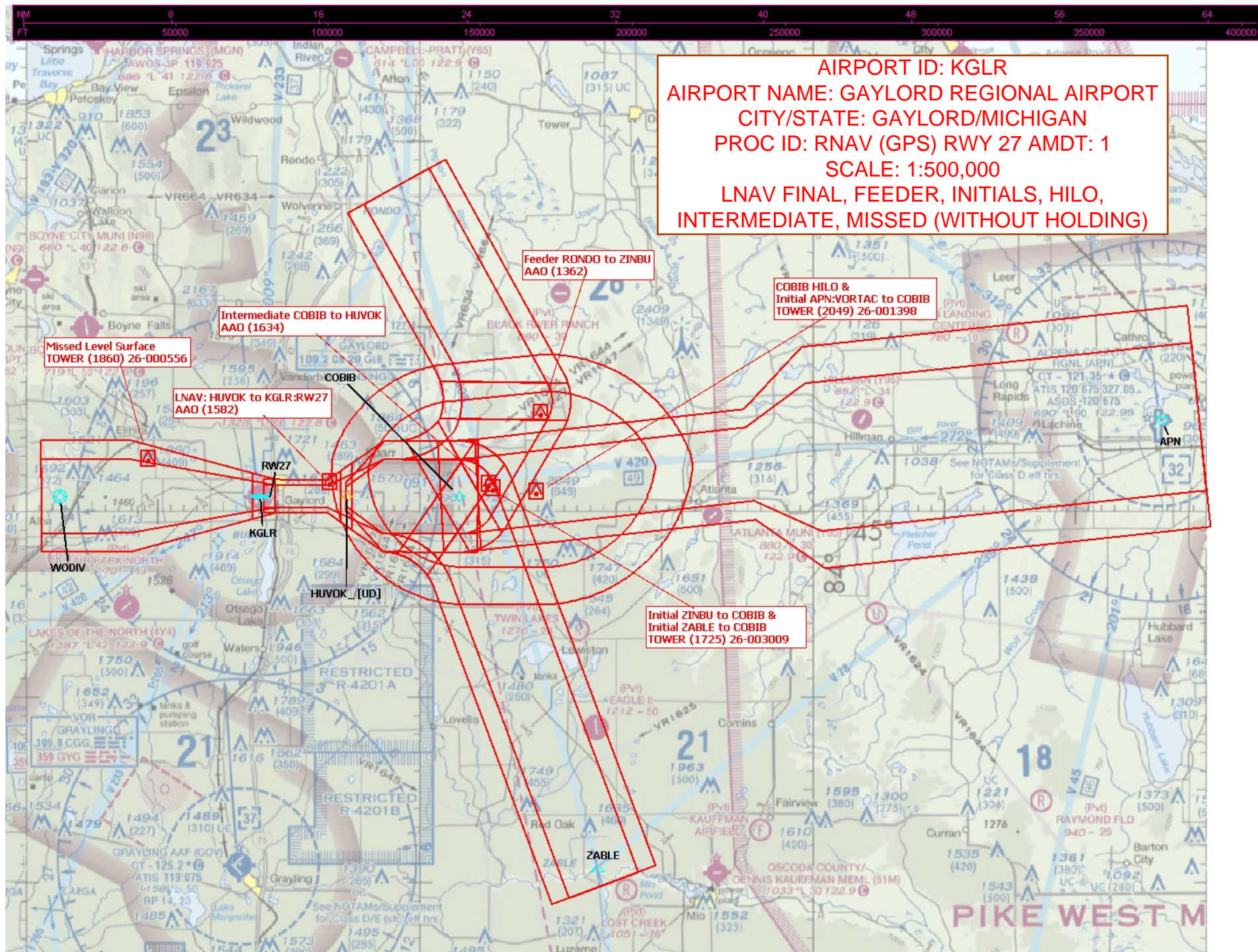
Amdt 1 FIG

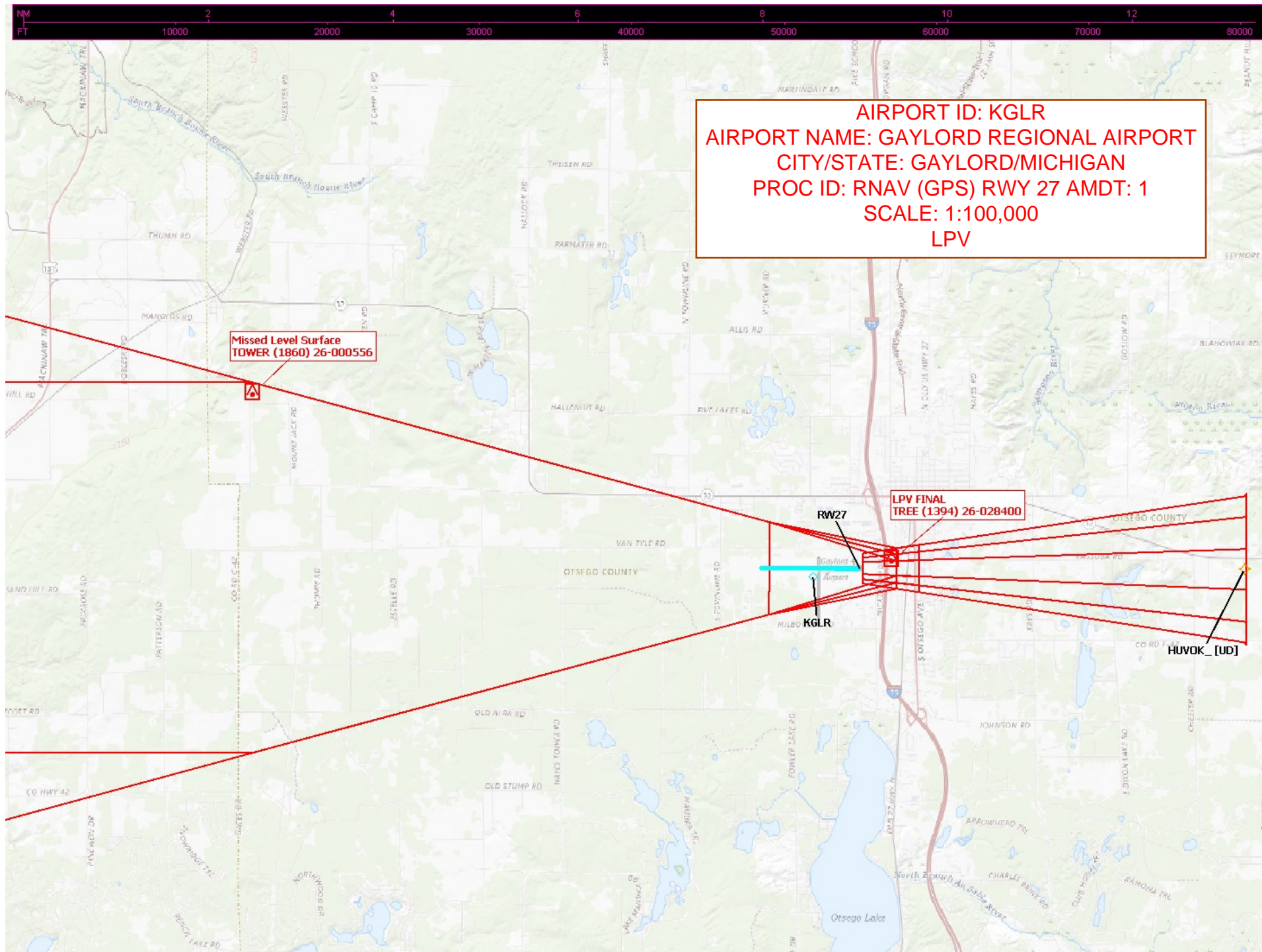
45°01'N-84°42'W

GAYLORD RGNL (GLR)

RNAV (GPS) RWY 27







AIRPORT ID: KGLR
AIRPORT NAME: GAYLORD REGIONAL AIRPORT
CITY/STATE: GAYLORD/MICHIGAN
PROC ID: RNAV (GPS) RWY 27 AMDT: 1
SCALE: 1:100,000
LPV

