


Flight Procedures Cover Page	Task Action: FLIGHT CHECK	Task Type: IAP	Estimated Chart Date: 06/16/2022	APWS Task ID: 4EB657DEB37142EF829FFF6D96ABCAC9	APWS Project ID: 7C01D2BFDAD4159911AD1E0626BE181
Procedure: RNAV (GPS) RWY 32 AMDT 0D		Enroute: NO	Specialist: Cappabianco, Anthony		Agreement Number:
Airport ID: KJVL			Airport City: JANESVILLE		State: WI
Facility ID:	Facility Type:	Flight Inspection Remark Type: New FC Slot			


Procedure Comments:
 CLEARS FDC NOTAM 2/9239.

PROCESSED IAW TECHNICAL SUPPORT GROUP (AJF-17) MEMO DATED 07/07/2021, SUBJECT: GUIDANCE FOR PROCEDURAL CHANGES REQUIRING FLIGHT INSPECTION/VALIDATION.

CONTACT MARK ADAMS 405-954-9946.



Digitally signed by
MARK D ADAMS
 Mar 17, 2022



APP CRS	Rwy Idg	7302
316°	TDZE	806
	Apt Elev	808

OLD

RNAV (GPS) RWY 32

SOUTHERN WISCONSIN RGNL (JVL)

RNP APCH.

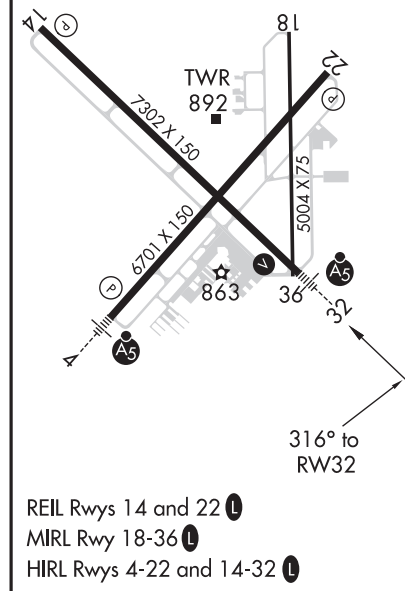
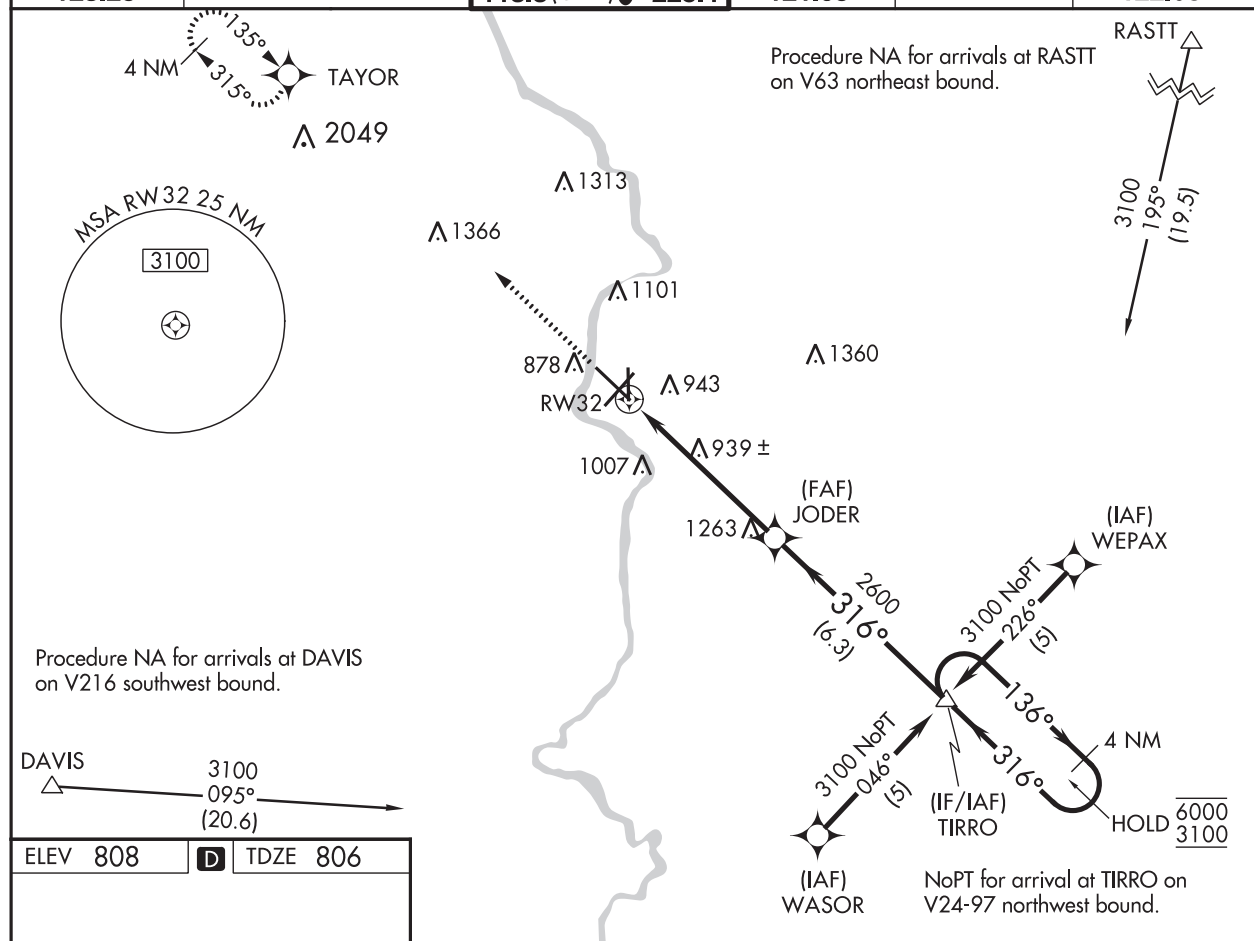
NA Circling Rwy 18 NA at night. Baro-VNAV and VDP NA when using Rockford altimeter setting. For uncompensated Baro-VNAV systems, procedure NA below -16° C or above 54°C. When local altimeter setting not received, use Rockford altimeter setting and increase LNAV/VNAV DA to 1289 feet and all MDAs 80 feet; increase LNAV Cat C visibility 1/4 SM and Cat D visibility 1/8 SM, increase Circling Cats C/D visibilities 1/4 SM. For inop ALS, increase LNAV all Cats visibility to 1 1/8 SM.

MALSR



MISSED APPROACH:
Climb to 3100 direct
TAYOR and hold.

ATIS 128.25	ROCKFORD APP CON 121.0 327.0	JANESVILLE TOWER ★ 118.8 (CTAF) 0 225.4	GND CON 121.65	CLNC DEL 121.65	UNICOM 122.95
-----------------------	--	---	--------------------------	---------------------------	-------------------------



3100 ↑	TAYOR ✦	4 NM Holding Pattern			
* LNAV only.					



AIRPORT ID	KJVL
AIRPORT NAME	SOUTHERN WISCONSIN RGNL
CITY	JANESVILLE
STATE	WI
Proc ID:	CIRCLING AREAS
Scale	1:100,000

