

FEDERAL AVIATION ADMINISTRATION  
FLIGHT STANDARDS SERVICE  
STANDARD TERMINAL ARRIVAL (STAR)

Bearings, headings, courses, tracks and radials are magnetic. Elevations and altitudes are in feet, MSL. Altitudes are minimum altitudes unless otherwise indicated.  
Distances are in nautical miles (NM). Graphic depictions attached.

Arrival Name	Number	STAR Computer Code	Superseded Number	Dated	Effective Date
APPLE (RNAV)	ONE	RUUTH.APPLE1	NONE		

TRANSITION ROUTES:

Transition Name	Transition Computer Codes	From FIX/NAVAID	To FIX/NAVAID	Course	Distance	MEA	MOCA	MAA	Crossing Altitudes / Fixes
SHLBK	SHLBK.APPLE1	SHLBK	SHLBK						
			LOUIE	033.10	17.64	10000	1600		AT 13000
			BACKY	034.69	26.24	10000	1600		
			ODESA	034.62	30.89	10000	1500		
			DQO VORTAC	054.53	15.21	10000	1600		
			RUUTH	081.63	29.94	6000	2100		
SWANN	SWANN.APPLE1	SWANN	SWANN						
			GATBY	054.29	08.89	10000	1500		
			KERNO	054.36	03.97	10000	1400		
			ODESA	054.42	14.74	10000	1300		
			DQO VORTAC	054.53	15.21	10000	1600		
			RUUTH	081.63	29.94	6000	2100		

ARRIVAL ROUTE DESCRIPTION:

FROM RUUTH ON TRACK 059.62/11.46 TO WNDYL, THEN ON TRACK 059.74/5.00 TO CROSS BRAND AT 8000, THEN ON TRACK 059.80/5.25 TO KORRY, THEN ON TRACK 059.84/9.70 TO DEPDY, THEN ON TRACK 056.01/7.28 TO TYKES, THEN ON TRACK 056.07/7.12 TO MINKS, THEN ON TRACK 056.14/3.00 TO DAMYR, THEN ON TRACK 056.17/9.02 TO RENUE, THEN ON TRACK 044.85/2.68 TO APPLE, THEN ON TRACK 044.88/5.26 TO PROUD, THEN ON TRACK 044.97/10.98 TO VADDR, THEN ON TRACK 044.97. EXPECT RADAR VECTORS TO FINAL APPROACH COURSE.

PROCEDURAL DATA NOTES:

NOTE: RADAR REQUIRED

NOTE: RNAV 1

NOTE: DME/DME/IRU OR GPS REQUIRED

NOTE: TURBOPROP AIRCRAFT ONLY.

NOTE: TURBOJETS PERMITTED FOR ARRIVAL FROM KPHL/PHL SATELLITE AIRPORTS ONLY.

FIXES AND/OR HOLDING PATTERNS:

CHART HOLDING AT BACKY: HOLD SW, RT, 036.00 INBOUND, 7 NM LEGS.

CHART HOLDING AT BRAND: HOLD SW, RT, 060.00 INBOUND, 4 NM LEGS, 210 KIAS.

CHART HOLDING AT DAMYR: HOLD SW, LT, 057.00 INBOUND, 4 NM LEGS, 210 KIAS.

CHART HOLDING AT DQO VORTAC: HOLD SW, LT, 055.00 INBOUND, 4 NM LEGS.

CHART HOLDING AT KERNO: HOLD SW, RT, 055.00 INBOUND, 7 NM LEGS.

CHART HOLDING AT PROUD: HOLD SW, LT, 045.00 INBOUND, 4 NM LEGS, 210 KIAS.

CHART HOLDING AT RUUTH: HOLD W, LT, 082.00 INBOUND, 4 NM LEGS.

CHART HOLDING AT DEPDY: HOLD SW, RT, 056.00 INBOUND, 4 NM LEGS, 210 KIAS.

CHART HOLDING AT WNDYL: HOLD SW, RT, 060.00 INBOUND, 4 NM LEGS, 210 KIAS.



FEDERAL AVIATION ADMINISTRATION  
FLIGHT STANDARDS SERVICE  
STANDARD TERMINAL ARRIVAL (STAR)

Bearings, headings, courses, tracks and radials are magnetic. Elevations and altitudes are in feet, MSL. Altitudes are minimum altitudes unless otherwise indicated.  
Distances are in nautical miles (NM). Graphic depictions attached.

Arrival Name	Number	STAR Computer Code	Superseded Number	Dated	Effective Date
APPLE (RNAV)	ONE	RUUTH.APPLE1	NONE		

COMMUNICATIONS:

PHILADELPHIA APP CON.  
POTOMAC TRACON.  
NEW YORK APP CON.  
LAGUARDIA ATIS.

AIRPORTS SERVED:

LAGUARDIA, NEW YORK, NY (KLGA)

LOST COMMUNICATIONS PROCEDURE:

REMARKS:

ADDITIONAL FLIGHT DATA:

DME/DME ASSESSMENT: SAT (RNP 2.0)  
REFERENCE MAGNETIC VARIATION = KLGA 12W/1980  
CHART AT VADDR TERMINUS: LDG KLGA

				Digitally signed by
<u>FLIGHT INSPECTED BY:</u>				<b>DONALD H LANIER</b>
DURLEY J FELDER				Mar 24, 2020
Name				Signature
FICO				Digitally signed by
Organization				<b>DONALD H LANIER</b>
3/16/20				Mar 24, 2020
Date				Signature
<u>DEVELOPED BY:</u>				Digitally signed by
Joey Tinsley				<b>DONALD H LANIER</b>
Name				Mar 24, 2020
FAA Eastern PBN Co-Lead				Signature
01/29/2020				Digitally signed by
Date				<b>DONALD H LANIER</b>
<u>APPROVED BY:</u>				Mar 24, 2020
PAT MULQUEEN, MANAGER				Signature
Name				
AJV-A440				
Organization				
Date				

CHANGES:

REASONS:

03/20/20: THIS IS AN UPDATED COPY OF THE FORM APPROVED ON 02/03/20.

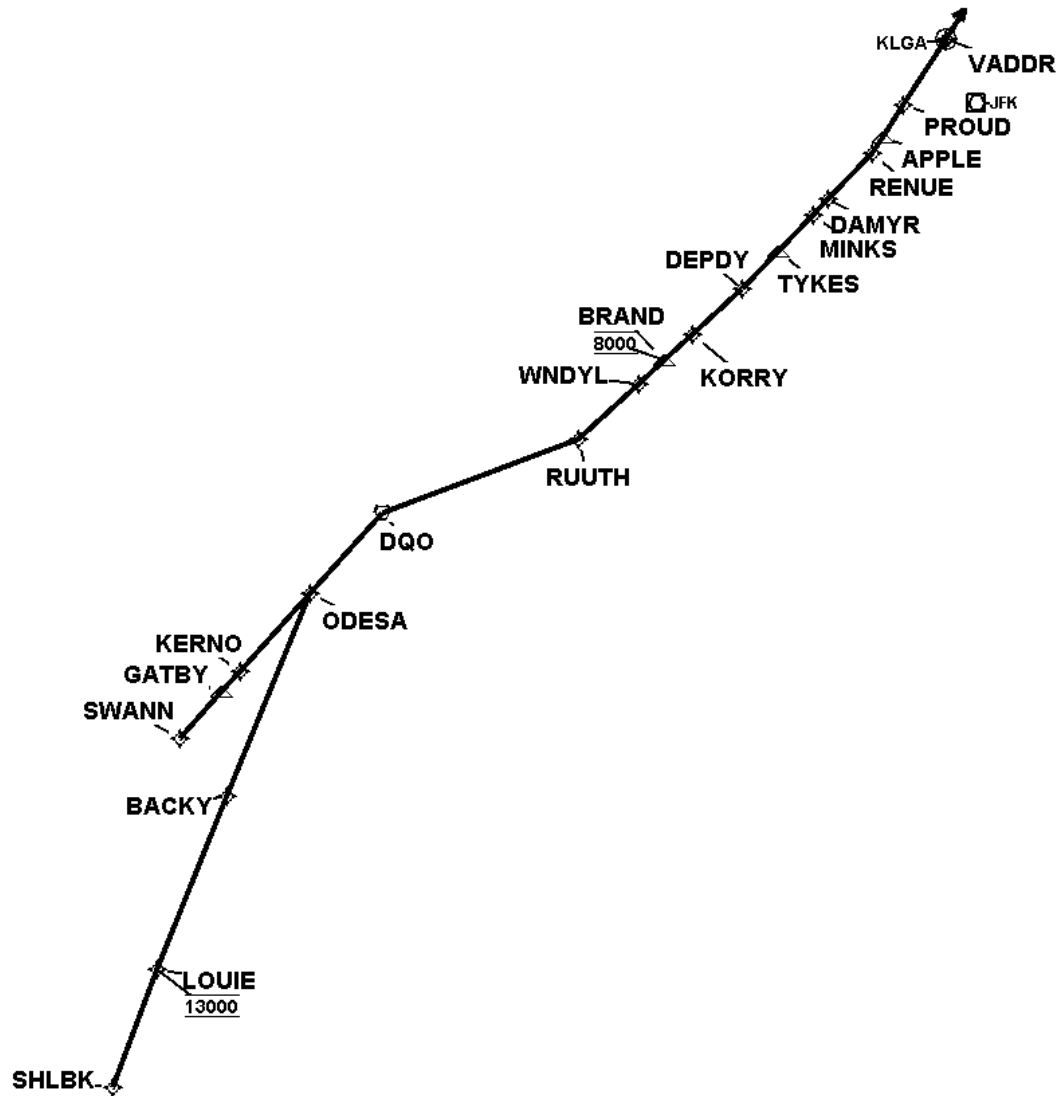
1. DELETED NOTE: CHART 210 KIAS HOLDING AT FIXES WNDYL, BRAND, DEPDY, DAMYR, PROUD IN ADDITIONAL FLIGHT DATA



FEDERAL AVIATION ADMINISTRATION  
FLIGHT STANDARDS SERVICE  
STANDARD TERMINAL ARRIVAL (STAR)

Bearings, headings, courses, tracks and radials are magnetic. Elevations and altitudes are in feet, MSL. Altitudes are minimum altitudes unless otherwise indicated.  
Distances are in nautical miles (NM). Graphic depictions attached.

Arrival Name	Number	STAR Computer Code	Superseded Number	Dated	Effective Date
APPLE (RNAV)	ONE	RUUTH.APPLE1	NONE		
Graphic Depiction 1					

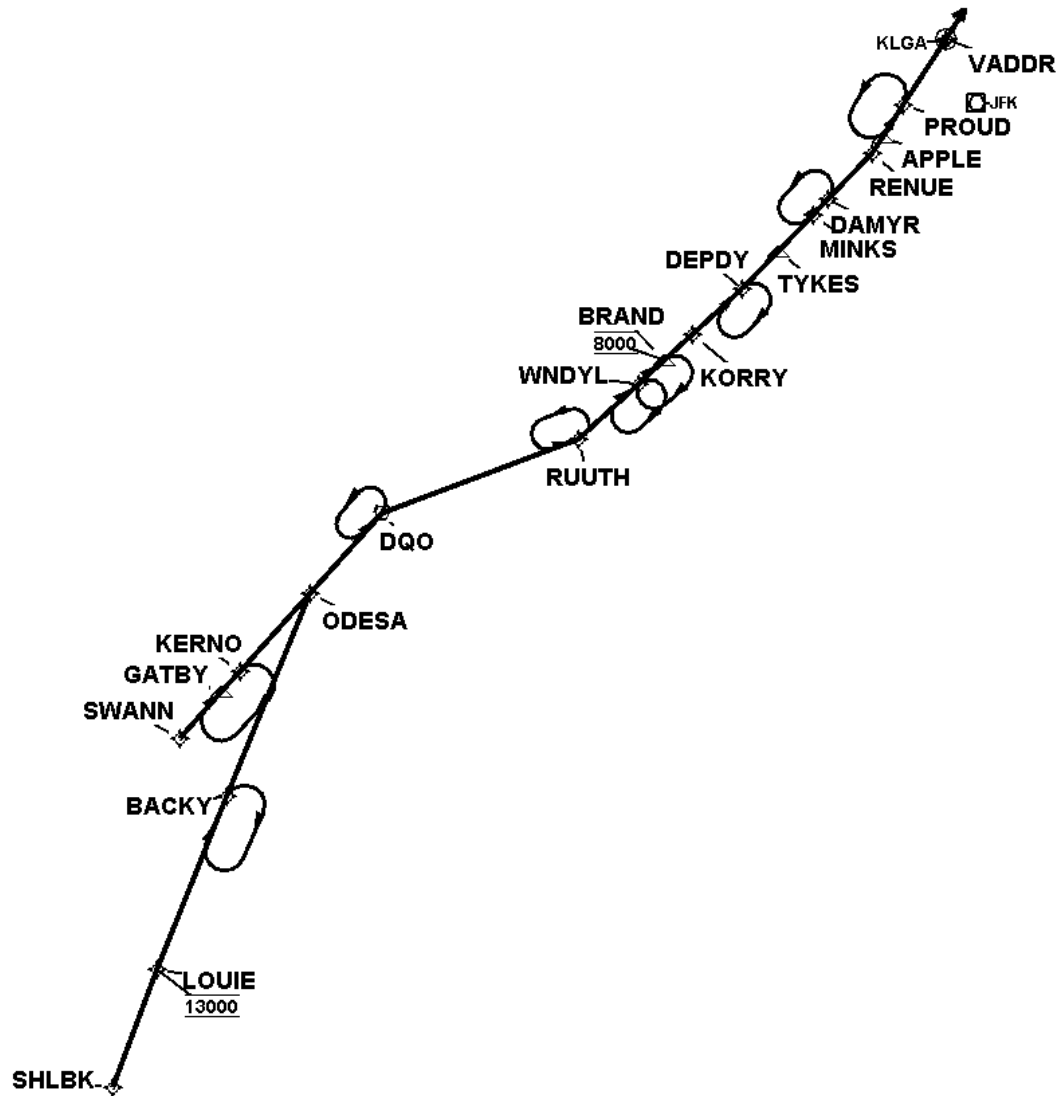


QUALITY  
18  
CHECKED

FEDERAL AVIATION ADMINISTRATION  
FLIGHT STANDARDS SERVICE  
STANDARD TERMINAL ARRIVAL (STAR)

Bearings, headings, courses, tracks and radials are magnetic. Elevations and altitudes are in feet, MSL. Altitudes are minimum altitudes unless otherwise indicated.  
Distances are in nautical miles (NM). Graphic depictions attached.

Arrival Name	Number	STAR Computer Code	Superseded Number	Dated	Effective Date
APPLE (RNAV)	ONE	RUUTH.APPLE1	NONE		
Graphic Depiction 2					



QUALITY  
18  
CHECKED

FEDERAL AVIATION ADMINISTRATION  
FLIGHT STANDARDS SERVICE  
STAR (DATA RECORD)

Arrival Name APPLE (RNAV)	Number ONE	STAR Computer Code RUUTH.APPLE1		Superseded Number NONE		Dated	Effective Date		
FIX/NAVAID	LAT/LONG	C	FO/FB	LEG TYPE	TC	DIST (NM)	ALTITUDE	SPEED	REMARKS
En Route Transition									
SHLBK	382016.21N / 0762610.51W	Y		IF					SHLBK.APPLE1
LOUIE	383644.33N / 0761804.37W	Y	FB	TF	021.10	17.64	AT 13000		
BACKY	390057.71N / 0760504.92W	Y	FB	TF	022.69	26.24			
ODESA	392929.00N / 0754944.37W	Y	FB	TF	022.62	30.89			
DQO VORTAC	394041.30N / 0753625.51W	Y	FB	TF	042.53	15.21			
RUUTH	395101.24N / 0745959.17W	Y	FB	TF	069.63	29.94			
En Route Transition									
SWANN	390905.28N / 0761343.94W	Y		IF					SWANN.APPLE1
GATBY	391540.02N / 0760601.84W	Y	FB	TF	042.29	08.89			
KERNO	391836.25N / 0760234.92W	Y	FB	TF	042.36	03.97			
ODESA	392929.00N / 0754944.37W	Y	FB	TF	042.42	14.74			
DQO VORTAC	394041.30N / 0753625.51W	Y	FB	TF	042.53	15.21			
RUUTH	395101.24N / 0745959.17W	Y	FB	TF	069.63	29.94			
Common Route									
RUUTH	395101.24N / 0745959.17W	Y		IF					RUUTH.APPLE1
WNDYL	395844.47N / 0744858.56W	Y	FB	TF	047.62	11.46			
BRAND	400206.28N / 0744409.50W	Y	FB	TF	047.74	05.00	AT 8000		
KORRY	400537.83N / 0743905.56W	Y	FB	TF	047.80	05.25			
DEPDY	401208.25N / 0742942.67W	Y	FB	TF	047.84	09.70			
TYKES	401722.38N / 0742306.13W	Y	FB	TF	044.01	07.28			
MINKS	402229.54N / 0741637.10W	Y	FB	TF	044.07	07.12			
DAMYR	402438.77N / 0741352.98W	Y	FB	TF	044.14	03.00			
RENUE	403106.72N / 0740538.72W	Y	FB	TF	044.17	09.02			
APPLE	403322.09N / 0740344.11W	Y	FB	TF	032.85	02.68			
PROUD	403747.25N / 0735959.12W	Y	FB	TF	032.88	05.26			
VADDR	404700.20N / 0735207.00W	Y	FO	TF	032.97	10.98			
KLGA				FM	032.97				

QUALITY  
18  
CHECKED

