

Flight Procedures Cover Page	Task Action: P-NOTAM	Task Type: IAP	Estimated Chart Date: 10/05/2023	APWS Task ID: 4E1C3E6EC8CF4EB29D172055F2757492	APWS Project ID: 3173067135904BFDBE2D5A284BCB1554
Procedure: VOR RWY 35 AMDT 1B		Enroute: NO	Specialist:		Agreement Number:
Airport ID: KAPS			Airport City: RESERVE		State: LA
Facility ID: RQR	Facility Type: VOR_DME	Flight Inspection Remark Type:			
<div>Procedure Comments:</div> <div>UTILIZED ACTIVE AIRNAV DATA FOR KAPS RWY 35</div> <div>UPDATED CIRCLING CAT C MINS: INCORPORATED FDC 3/4946.</div> <div>MISSED APPROACH CONTROLLER CHANGED FROM (22-001376) 261 MSL TOWER TO (22-053546) 460 MSL TOWER.</div> <div>PROCESSED IAW TECHNICAL SUPPORT GROUP (AJF-17) MEMO DATED 07/07/2021 GUIDANCE FOR PROCEDURAL CHANGES REQUIRING FLIGHT INSPECTION/VALIDATION.</div> <div>CONTACT JASON KRETSCHMER: AJV-A420, 405-954-4019</div> <div><div>QUALITY 10 CHECKED</div><div>QUALITY 33 CHECKED</div></div>					

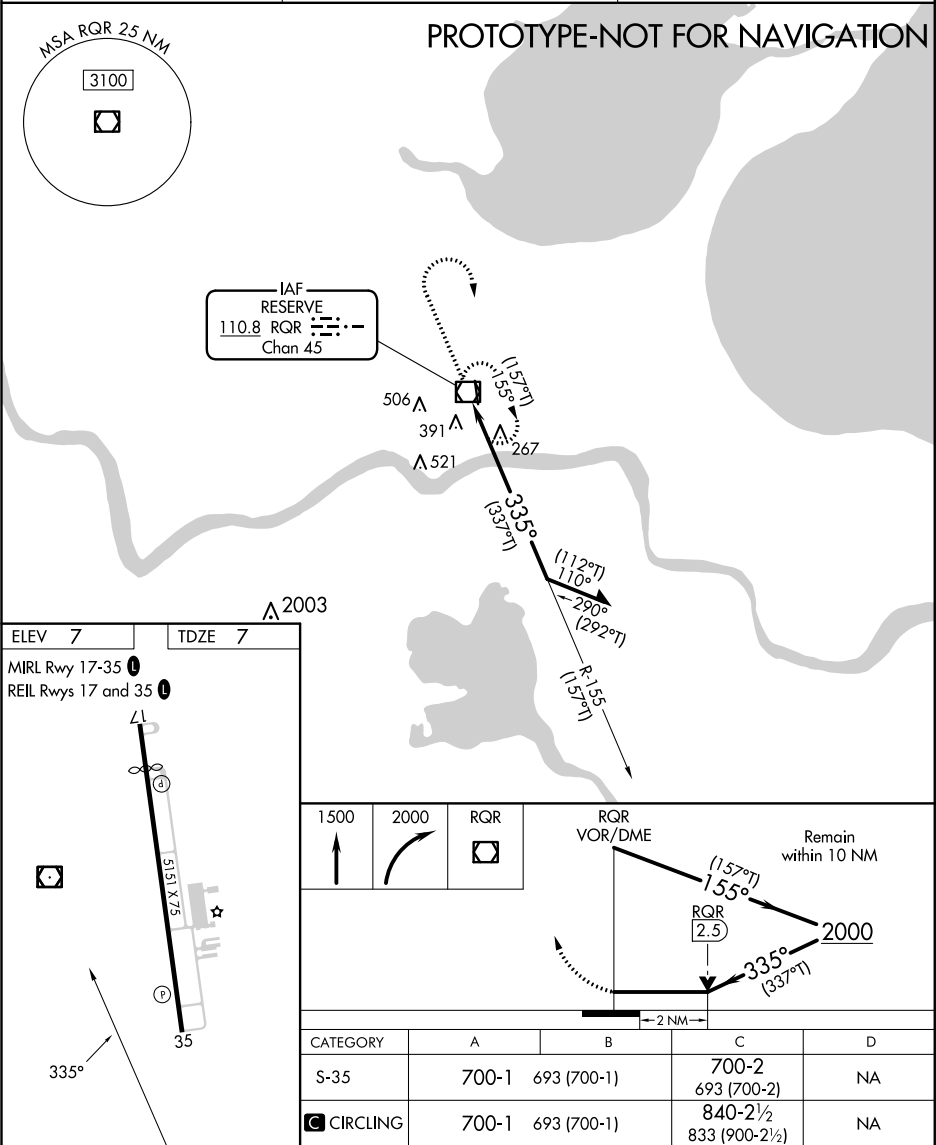
VOR/DME RQR	APP CRS	Rwy Idg	5151
110.8	335°	TDZE	7
Chan 45		Apt Elev	7

VOR RWY 35

PORT OF SOUTH LOUISIANA EXEC RGNL (APS)

<p>▼ Rwy 35 helicopter visibility reduction below ¾ SM NA.</p> <p>▲</p>	<p>MISSED APPROACH: Climb to 1500 then climbing right turn to 2000 direct RQR VOR/DME and hold.</p>
---	---

AWOS-3PT 125.45	NEW ORLEANS APP CON 125.5 350.35	UNICOM 122.7 (CTAF) 0
--------------------	-------------------------------------	--------------------------



RESERVE, LOUISIANA

AL-9134 (FAA)

21168

VOR/DME RQR <b>110.8</b> Chan <b>45</b>	APP CRS <b>335°</b>	Rwy Idg <b>5151</b> TDZE <b>7</b> Apt Elev <b>7</b>
---	------------------------	---

**VOR RWY 35**

PORT OF SOUTH LOUISIANA EXEC RGNL (APS)

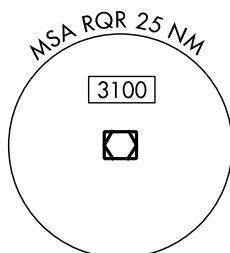
**T** Rwy 35 helicopter visibility reduction below  $\frac{3}{4}$  SM NA. When local altimeter setting not received, use Louis Armstrong New Orleans Intl altimeter setting and increase all MDA 60 feet, increase S-35 and Circling Cat B visibility  $\frac{1}{4}$  SM. VDP NA when using Louis Armstrong New Orleans Intl altimeter setting.

**MISSED APPROACH:** Climb to 1500 then climbing right turn to 2000 direct RQR VOR/DME and hold.

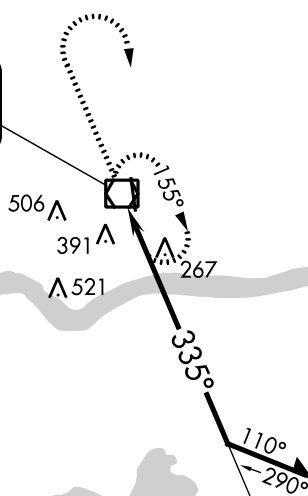
AWOS-3PT  
**125.45**

NEW ORLEANS APP CON  
**125.5 350.35**

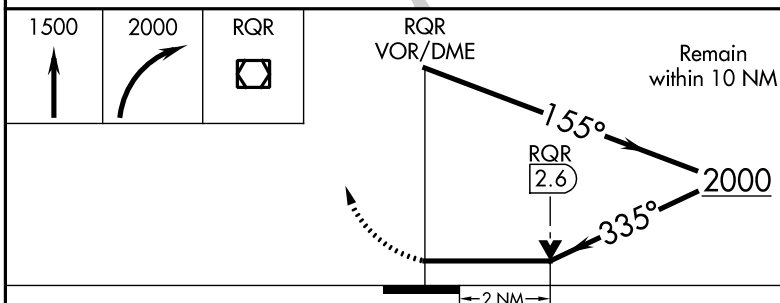
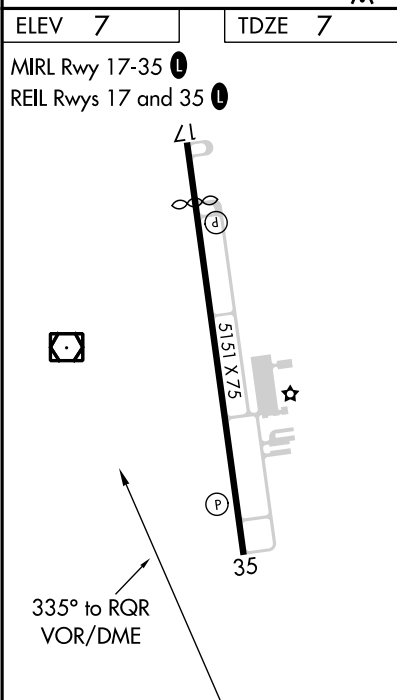
UNICOM  
**122.7 (CTAF) 0**

**OLD**

IAF  
RESERVE  
**110.8** RQR  
Chan 45



A 2003



CATEGORY	A	B	C	D
S-35	700-1	693 (700-1)	700-2 693 (700-2)	NA
<b>C</b> CIRCLING	700-1	693 (700-1)	820-2½ 813 (900-2½)	NA

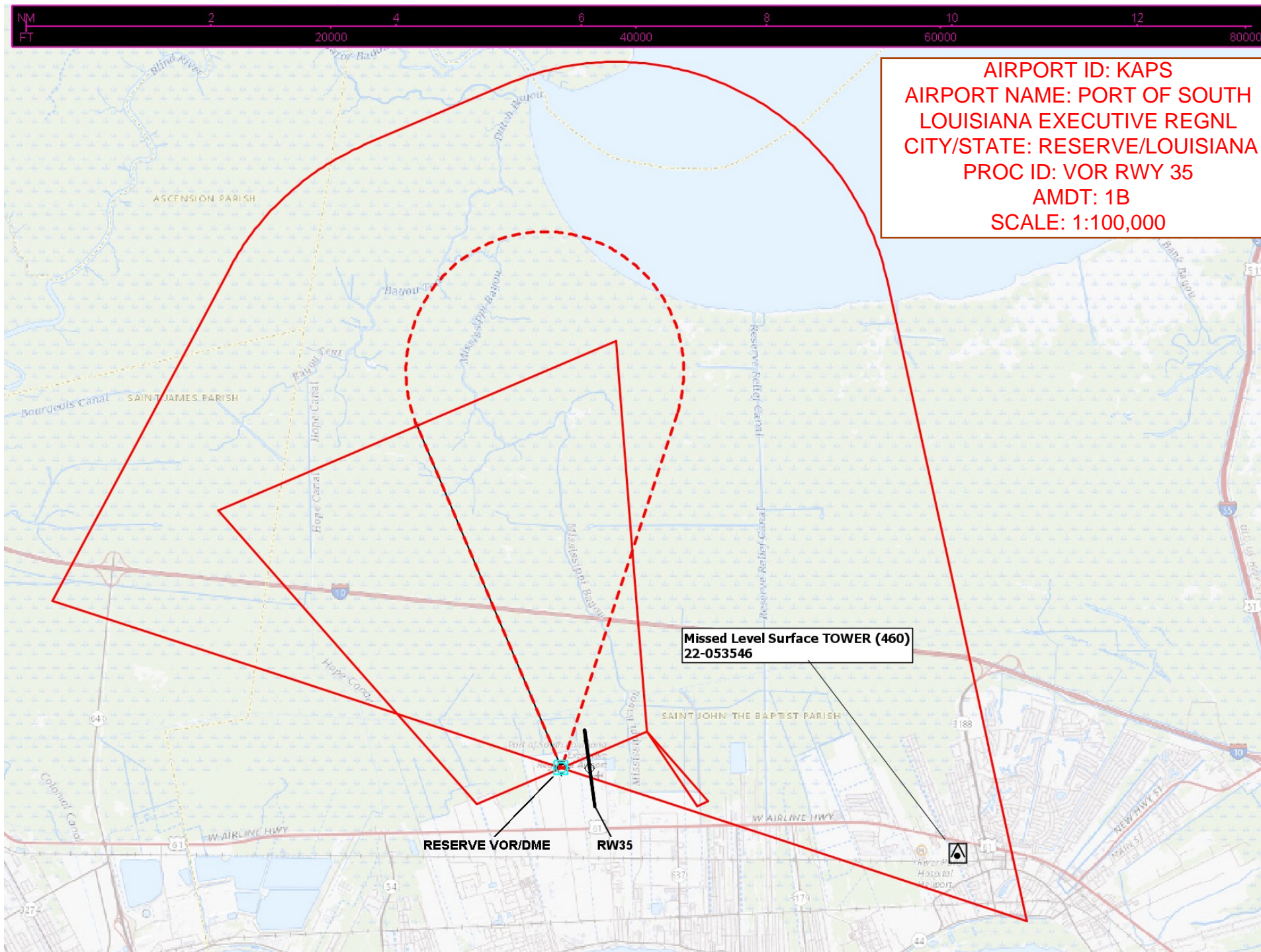
RESERVE, LOUISIANA  
Amdt 1A 05JAN17

PORT OF SOUTH LOUISIANA EXEC RGNL (APS)  
30°05'N-90°35'W

**VOR RWY 35**

SC-4, 23 MAR 2023 to 20 APR 2023

SC-4, 23 MAR 2023 to 20 APR 2023





40000

AIRPORT NAME: PORT OF SOUTH  
LOUISIANA EXECUTIVE REGNL  
CITY/STATE: RESERVE/LOUISIANA  
PROC ID: VOR RWY 35  
AMDT: 1B

