

Flight Procedures Cover Page	Task Action: FLIGHT CHECK	Task Type: IAP	Estimated Chart Date: 06/12/2025	APWS Task ID: 4E0A19D556C64EF58774951884906B9F	APWS Project ID: F23CFC1BB9974996827F6032027BCB75
Procedure: VOR RWY 9 AMDT 7		Enroute: NO	Specialist: Kunkler, Jamie		Agreement Number:
Airport ID: KEKM			Airport City: ELKHART		State: IN
Facility ID: GIJ	Facility Type: VORTAC	Flight Inspection Remark Type: New FC Slot			
<div>Procedure Comments: ACTIVE DATA USED.</div> <div>GSH VORTAC VOR MON.</div> <div>CONTACT CASIMIR TABAKA 405.954.7931.</div> <div><div>QUALITY 33 CHECKED</div><div>QUALITY 20 CHECKED</div></div>					

<b>FIPC BASIC FORM</b>										
<b>PROCEDURE:</b> VOR RWY 9 AMDT 7				<b>AIRPORT NAME:</b> ELKHART MUNI			<b>AIRPORT ID:</b> KEKM		<b>SPECIAL CONTROL NO:</b> BP-03-245-25	
<b>FAC ID:</b> GIJ			<b>CITY:</b> ELKHART				<b>ST:</b> IN		<b>ORIG CHART DATE:</b> 06/12/2025	
<b>DFL TYPE:</b> PROC/A		<b>THIRD PARTY:</b> <input type="checkbox"/> YES		<b>EST. TIME ON SITE:</b> 0.4		<b>REIMB. NUMBER:</b> AC0721		<b>PTS TASK ID:</b> 4E0A19D556C64EF58774951884906B9F		
<b>PREFLIGHT NOTES</b>										
<b>REVIEWER:</b>							<b>DATE:</b>			
<b>COMMENTS:</b>							<b>CHECK ONE:</b>			
							<input type="checkbox"/> FLT CK REQ <input type="checkbox"/> NFCR <input type="checkbox"/> REJECT			
									YES	NO
							<b>CPV COMPLETE?</b>		X	
<b>PROCEDURE RESULTS</b>										
<b>INSPECTION DATE:</b> 04/13/2025		<b>CREW #:</b> VN424		<b>N #:</b> N83		<b>INSTRUMENT PROCEDURE STATUS:</b> <input checked="" type="checkbox"/> SAT <input type="checkbox"/> SAT W/CHANGES <input type="checkbox"/> UNSAT			<b>ARINC CODING:</b> <input checked="" type="checkbox"/> SAT <input type="checkbox"/> SAT/GOLD <input type="checkbox"/> UNSAT	
<b>FLIGHT INSPECTOR SIGNATURE:</b> marc webber @ 04/13/2025 16:36				<b>PRINTED NAME:</b> WEBBER, MARC RAYMOND					<b>NOTAM INITIATED?</b> <input type="checkbox"/> YES <input checked="" type="checkbox"/> NO	
<b>FLIGHT INSPECTOR REMARKS:</b>										
<b>IN-FLIGHT OBSTACLE REPORT</b>										
<b>OBSTRUCTION ID #:</b>		<b>COORDINATES OR LOCATION:</b>		<b>GNSS ALTITUDE (MSL):</b>		<b>BAROMETRIC ALTITUDE (MSL):</b>		<b>HEIGHT ABOVE GROUND LEVEL:</b>		

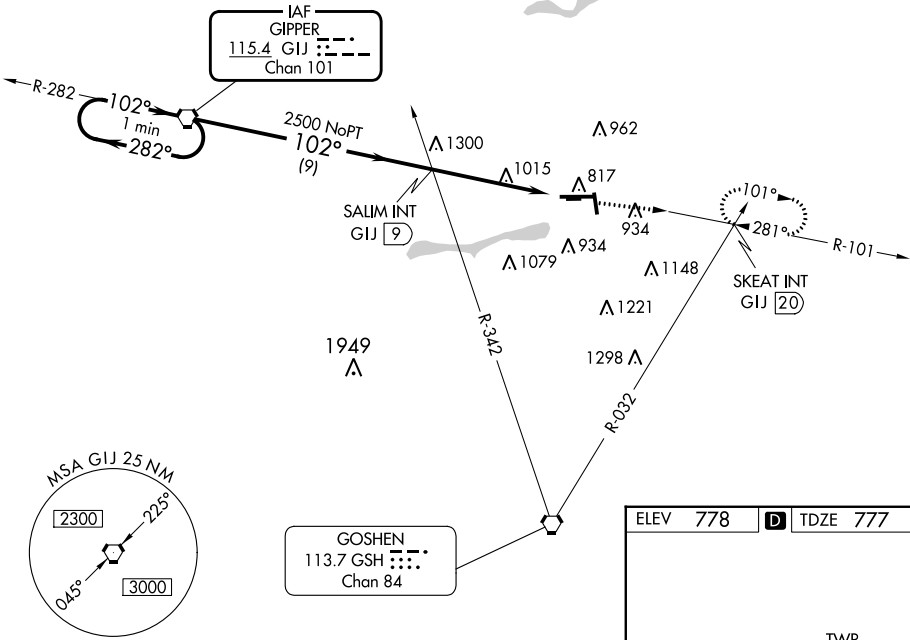
VORTAC GIJ	APP CRS	Rwy Idg	6500
<b>115.4</b>	<b>102°</b>	TDZE	<b>777</b>
Chan <b>101</b>		Apt Elev	<b>778</b>

VOR RWY 9  
ELKHART MUNI (EKM)

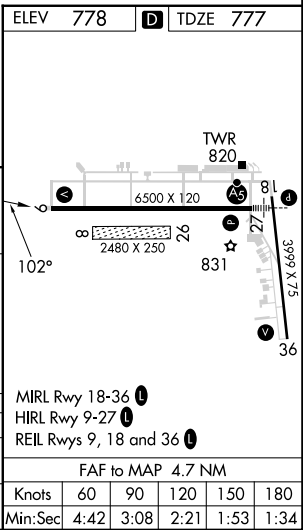
▼ Circling Rwy 36 NA at night. Circling NA to Rwy 8 and 26. Rwy 9 helicopter visibility reduction below ¾ SM NA. When local altimeter setting not received, use South Bend altimeter setting and increase all MDA 40 feet. VDP NA when using South Bend altimeter setting.	MISSED APPROACH: Climb to 2500 via GIJ R-101 to SKEAT INT/GIJ 20 DME and hold.
--	--

AWOS-3	SOUTH BEND APP CON ★	ELKHART TOWER ★	GND CON	CLNC DEL	CLNC DEL	UNICOM
<b>124.475</b>	<b>118.55 257.8</b>	<b>119.5 (CTAF) 0</b>	<b>121.8</b>	<b>121.8</b>	<b>119.7</b> (When twr closed)	<b>122.95</b>

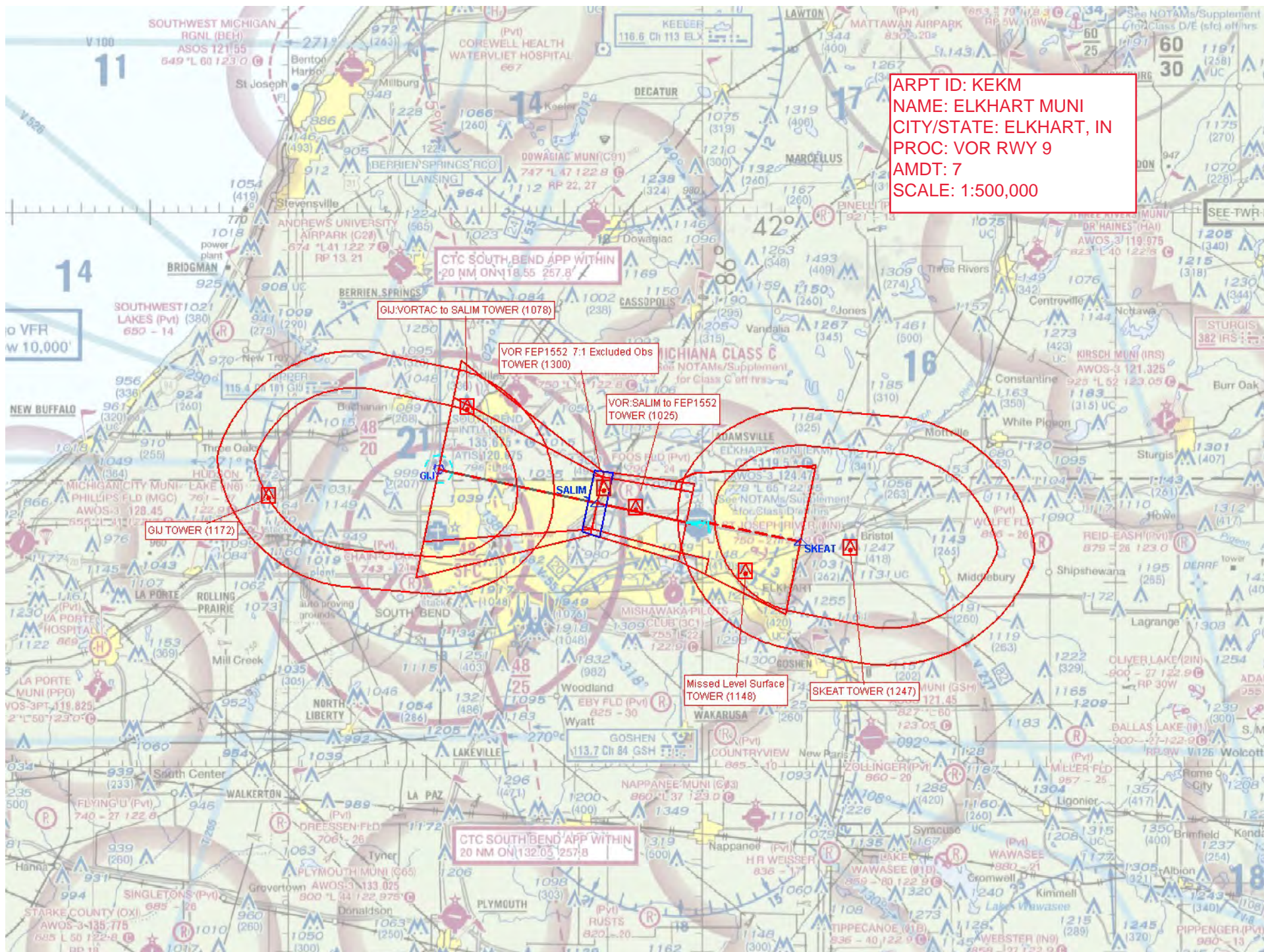
NoPT for arrivals on GIJ VORTAC  
airway radials 209 CW 310.



One Minute Holding Pattern	GIJ VORTAC	SALIM INT GIJ 9	2500	GIJ R-101	SKEAT INT
2500	282°	102°	2500	GIJ 12.1	GIJ 13.7
VGSI and descent angles not coincident (VGSI Angle 3.00/TCH 38).					
3.35° TCH 49					
9 NM 3.1 NM 1.6 NM					
CATEGORY	A	B	C	D	
S-9	1340-1	563 (600-1)	1340-1½ 563 (600-1½)	1340-1¾ 563 (600-1¾)	
◼ CIRCLING	1340-1	562 (600-1)	1380-1¾ 602 (700-1¾)	1580-2½ 802 (900-2½)	







ARPT ID: KEKM  
NAME: ELKHART MUNI  
CITY/STATE: ELKHART, IN  
PROC: VOR RWY 9  
AMDT: 7  
SCALE: 1:500,000

CTC SOUTH BEND APP WITHIN  
20 NM ON 118.55 257.8

GJ.VORTAC to SALIM TOWER (1078)

VOR FEP1552 7:1 Excluded Obs  
TOWER (1300)

VOR: SALIM to FEP1552  
TOWER (1025)

GJ TOWER (1172)

Missed Level Surface  
TOWER (1148)

SKEAT TOWER (1247)

CTC SOUTH BEND APP WITHIN  
20 NM ON 132.05 257.8



