

ELKHART, INDIANA

AL-5287 (FAA)

FIG

VORTAC GIJ	APP CRS	Rwy Idg	6500
115.4	102°	TDZE	777
Chan 101		Apt Elev	778

VOR RWY 9
ELKHART MUNI (EKM)

DME REQUIRED.

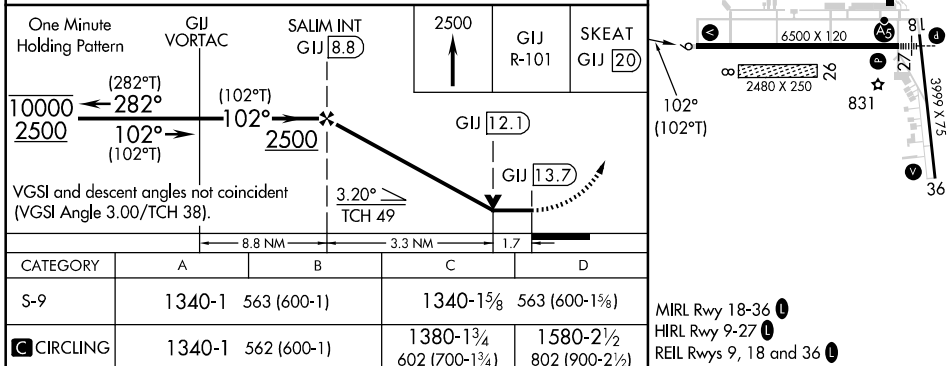
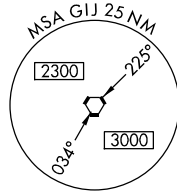
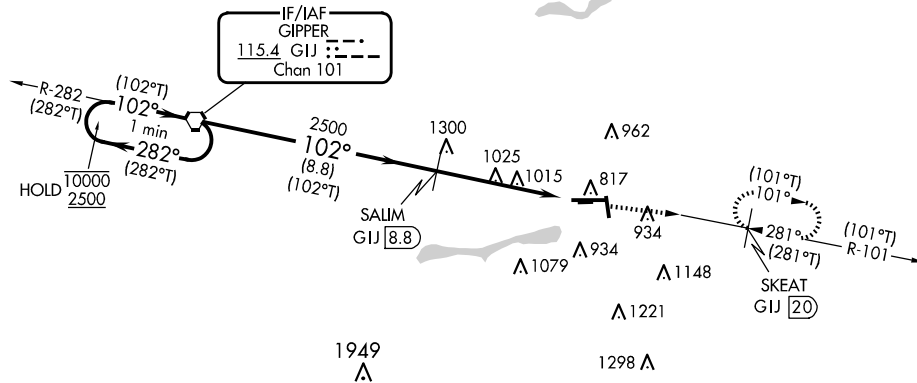
▼ VDP NA when using SBN altimeter setting. Rwy 9 helicopter visibility reduction below $\frac{3}{4}$ SM NA.
 ▲ Circling NA to Rwy 8 and 26. When local altimeter setting not received, use SBN altimeter setting and increase all MDAs 40 feet and S-09 visibility Cat C/D $\frac{1}{8}$ SM, and Circling visibility Cat D $\frac{1}{4}$ SM. Circling Rwy 18 and 36 NA at night.

MISSED APPROACH:
Climb to 2500 on GIJ
R-101 to SKEAT INT/GIJ
20 DME and hold.

AWOS-3	SOUTH BEND APP CON ★	ELKHART TOWER ★	GND CON	CLNC DEL	CLNC DEL	UNICOM
124.475	118.55 257.8	119.5 (CTAF) 0	121.8	121.8	119.7 (When twr closed)	122.95

NoPT for arrivals on GIJ VORTAC
airway radials 209 CW 310.

PROTOTYPE-NOT FOR NAVIGATION



ELKHART, INDIANA
Amdt 7 FIG

41°43'N-86°00'W

ELKHART MUNI (EKM)
VOR RWY 9