

|   |                              |   |                                     |   |  |
|---|------------------------------|---|-------------------------------------|---|--|
| Flight Procedures Cover Page  | Task Action:<br>FLIGHT CHECK | Task Type:<br>IAP                             | Estimated Chart Date:<br>06/15/2023 | APWS Task ID:<br>4DF9A807509645209F388AF2298DC728 | APWS Project ID:<br>F2DF52E2482544E683259ADEE16D266E |
| Procedure:<br>RNAV (GPS) X RWY 26 AMDT 2  |                              | Enroute:<br>NO                                | Specialist:<br>Lindholm, Scott      |   | Agreement Number:                                    |
| Airport ID:<br>KRIL   |                              |   | Airport City:<br>RIFLE              |   | State:<br>CO   |
| Facility ID:  | Facility Type:               | Flight Inspection Remark Type:<br>New FC Slot |                                     |   |  |
| <div>Procedure Comments:<br/>ADD CAT D LINE OF MINIMA.<br/><br/>AMENDMENT COMPLETED USING PENDING AIRPORT DATA.<br/><br/>CONTACT ERIC SUSKI (AJV-A431) 405-954-7331</div> <div><div>QUALITY<br/>10<br/>CHECKED</div><div>QUALITY<br/>33<br/>CHECKED</div></div> |                              |   |                                     |   |  |

FIG

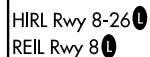
RNAV (GPS) X RWY 26  
RIFLE GARFIELD COUNTY (RIL)

**ODALS** MISSED APPROACH: Climb to 14000 direct OMJY and on track 235° to SAWOM and on track 218° to WOKPA and hold, continue climb-in-hold to 14000. Missed approach requires a minimum climb gradient of 290 FT/NM; if unable to meet climb gradient, see RNAV (GPS) W RWY 26.

|                |  |
|----------------|--|
| DENVER CENTER  | UNICOM   |
| 134.95 327.075 | 122.8 (CTAF)  |



EFF: FIG



RIFLE GARFIELD COUNTY (RIL)

RNAV (GPS) X RWY 26

RIFLE, COLORADO






AL-6741 (FAA)

21224

|  |                        |                             |   |
|--|------------------------|-----------------------------|---|
| WAAS<br>CH <b>93708</b><br><b>W26A</b> | APP CRS<br><b>259°</b> | Rwy Idg<br>TDZE<br>Apt Elev | <b>7000</b><br><b>5537</b><br><b>5537</b> |
|--|------------------------|-----------------------------|---|

# OLD

RNAV (GPS) X RWY 26  
RIFLE GARFIELD COUNTY (RIL)

|   |   |                      |  |  |
|---|---|----------------------|--|--|
| <br> NA |  -14°C | DME/DME RNP- 0.3 NA. | <br> | MISSED APPROACH: Climb to 13000 direct OMJY and on track 235° to SAWOM and on track 218° to WOKPA and hold, continue climb-in-hold to 13000. |
|---|---|----------------------|--|--|

|                        |  |  |
|------------------------|--|--|
| ASOS<br><b>135.275</b> | DENVER CENTER<br><b>134.95 327.075</b> | UNICOM<br><b>122.8</b> (CTAF) <b>0</b> |
|------------------------|--|--|

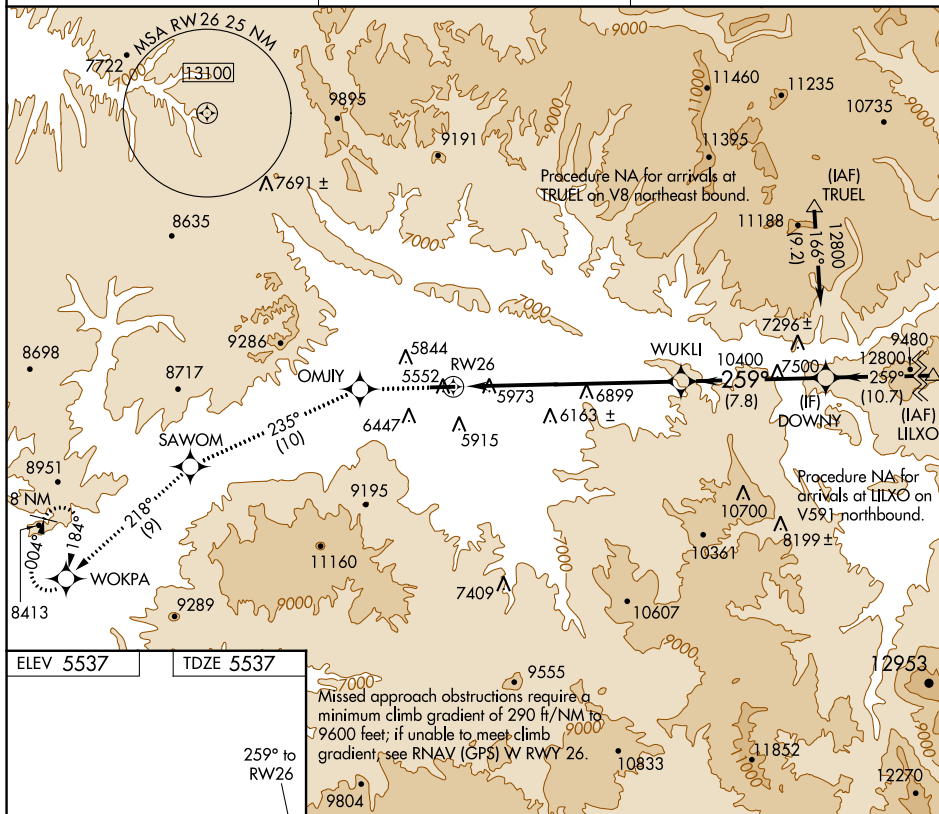


Diagram illustrating the RW26 approach procedure:

- Runway: 7000 X 100, 1.0% UP.
- Approach: 259° climb from 10400 to 12800 feet.
- Distances: 12.2 NM from runway to 10400 feet, 7.8 NM from 10400 feet to 12800 feet.
- GP 3.60° TCH 58.
- Approach Category: LPV DA (6300-2 1/4, 763 (800-2 1/4)) and NA.

RIFLE, COLORADO  
Amdt 1B 17AUG17

39°32'N-107°44'W

RIFLE GARFIELD COUNTY (RIL)  
RNAV (GPS) X RWY 26

SW-1, 29 DEC 2022 to 26 JAN 2023

SW-1, 29 DEC 2022 to 26 JAN 2023



AIRPORT ID: KRIL  
CITY/STATE: RIFLE, CO  
PROCEDURE: RNAV (GPS) X RWY 26  
INITIAL: TRUEL-SYDO-DOWNY  
INITIAL: LILXO-DOWNY  
INTERMEDIATE: DOWNY-WUKLI  
AMDT: 2  
SCALE: 1:500,000

Initial TRUEL to SYDO AAO (11388)  
UDO 23 AAO RX 26 INIT

Initial SYDO to DOWNY AAO (9974)  
UDO 02 AAO ILS26 INIT #3

Intermediate DOWNY to WUKLI AAO (9308)  
UDO 12 AAO RW 26 INTMD #7

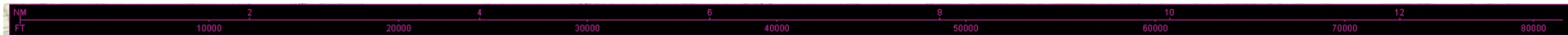
Initial LILXO to DOWNY AAO (9680)  
UDO 11 AAO RW 26 INIT #5

NOTICE  
ASPEN IFR ARR AND DEP CORRIDOR.  
VFR PILOTS ARE ADVISED TO CTC APP  
ON 123.8 FOR ADVISORIES.









AIRPORT ID: KRIL  
CITY/STATE: RIFLE, CO  
PROCEDURE: RNAV (GPS) X RWY 26  
LPV FINAL  
ASC  
AMDT: 2  
SCALE: 1:100,000

