

Flight Procedures Cover Page	Task Action: P-NOTAM	Task Type: IAP	Estimated Chart Date: 04/21/2022	APWS Task ID: 4D282C11B0E044A6A699D2A953841DEF	APWS Project ID: 229B156CC0E04DDF81DE61D3743D21FA
Procedure: RNAV (GPS) RWY 12 AMDT 0E		Enroute: NO	Specialist: Boone-walt, Rose		Agreement Number:
Airport ID: KSAD			Airport City: SAFFORD		State: AZ
Facility ID:	Facility Type:	Flight Inspection Remark Type:			
<p>Procedure Comments: PNOTAM CIRCLING RADII INCREASE</p> <p>CONTACT: JASON KRETSCHMER AJV-A421 LEAD: 405.954.4019</p> <p style="text-align: center;"><i>Digitally signed by</i> <b>JASON KRETSCHMER</b> Feb 28, 2022</p>					



WAAS CH <b>69516</b> <b>W12A</b>	APP CRS <b>123°</b>	Rwy Idg TDZE Apt Elev	<b>6007</b> <b>3167</b> <b>3178</b>
--	------------------------	-----------------------------	---

# RNAV (GPS) RWY 12

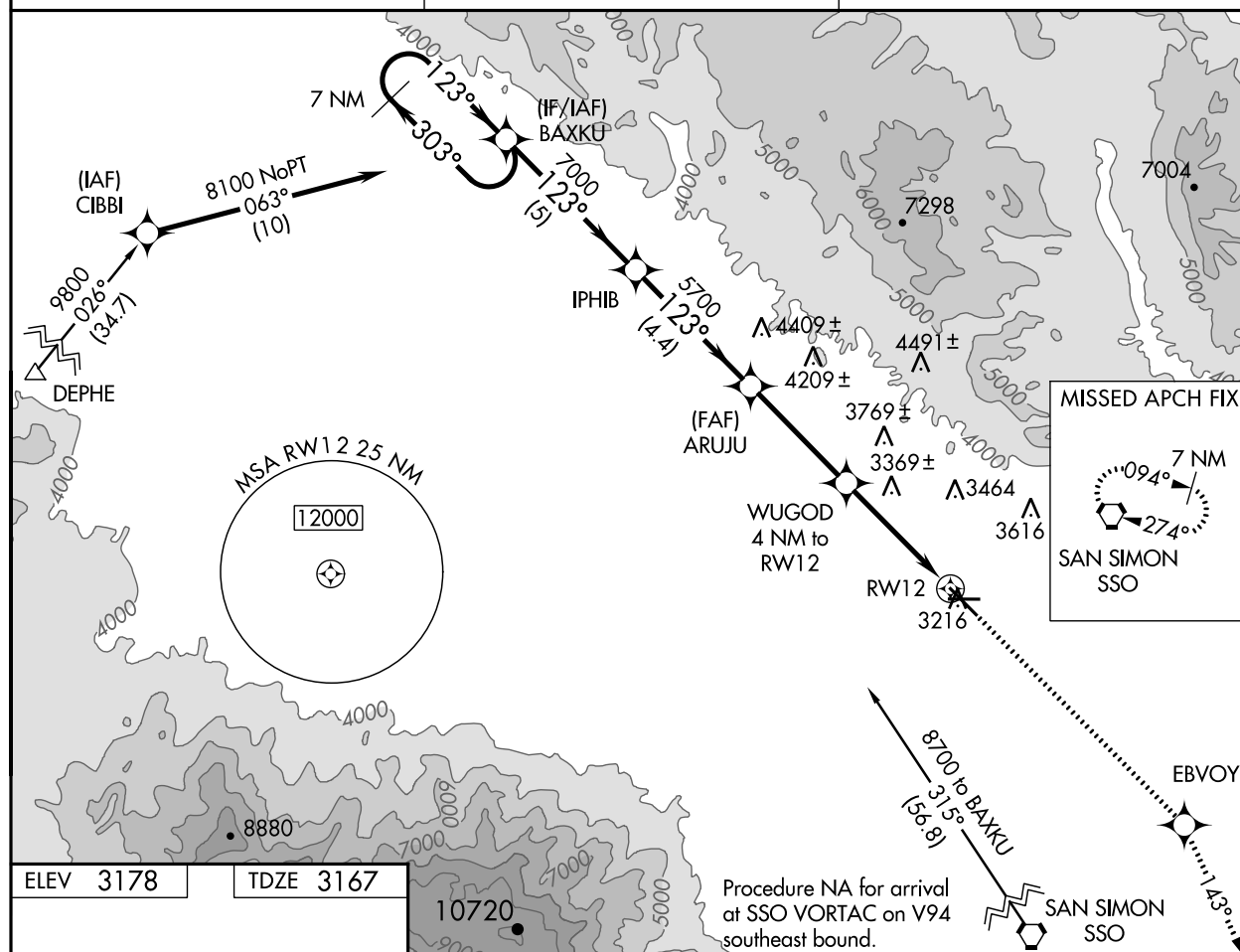
SAFFORD RGNL (SAD)

## RNP APCH.

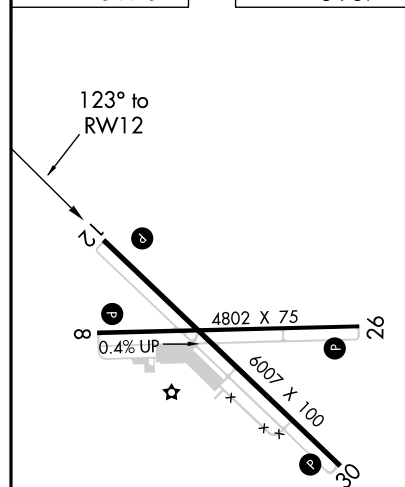
**T** For uncompensated Baro-VNAV systems, LNAV/VNAV NA below -21°C or above 54°C. Circling Rwy 8 NA at night.

MISSED APPROACH: Climb to 10000  
direct EBVOY and on track 143° to  
SSO VORTAC and hold.

ASOS <b>124.175</b>	ALBUQUERQUE CENTER <b>134.45 327.15</b>	UNICOM <b>122.8 (CTAF) 0</b>
------------------------	--	---------------------------------



ELEV 3178 TDZE 3167



REIL Rwy 8, 12, 26, and 30 **L**  
MIRL Rwy 8-26 and 12-30 **L**

7 NM Holding Pattern BAXKU		10000	EBVOY	tr 143°	SSO
8100 ← 303° → 123° → 7000		WUGOD 4 NM to RW12	* LNAV only		
GP 3.00° TCH 38		5700	* 1.6 NM to RW12		
5 NM		4.4 NM	3.7 NM	2.4 NM	1.6 NM
CATEGORY	A	B	C	D	
LPV DA	3417-1	250 (300-1)	NA		
LNAV/VNAV DA	3635-1 <sup>3</sup> / <sub>4</sub>	468 (500-1 <sup>3</sup> / <sub>4</sub> )	NA		
LNAV MDA	3700-1	533 (600-1)	NA		
CIRCLING	3740-1	562 (600-1)	NA		

