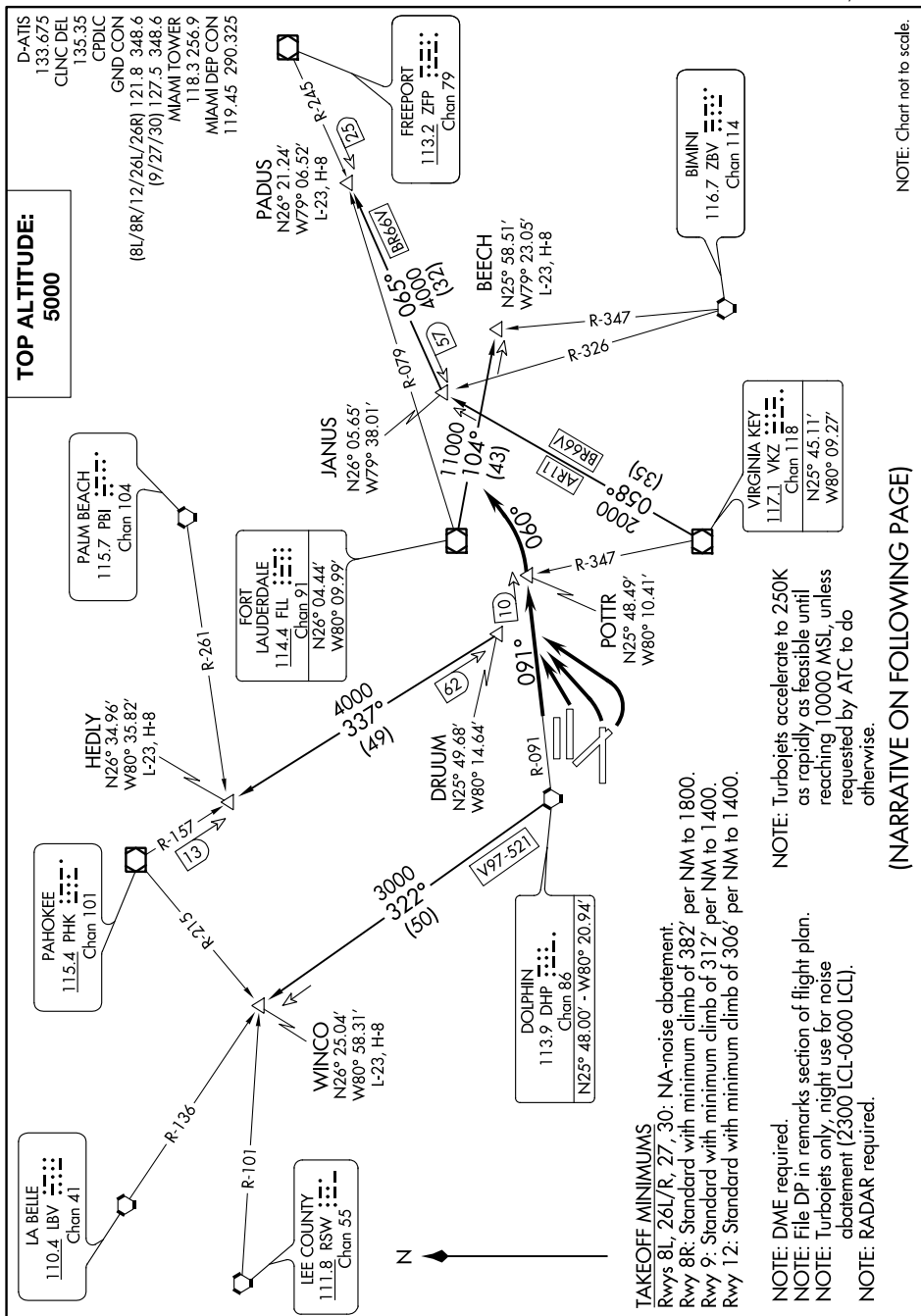


Flight Procedures Cover Page	Task Action: Cancellation	Task Type: SID	Estimated Chart Date: 10/07/2021	APWS Task ID: 4C498E7CEA1A4B24B6E66909E767F0ED	APWS Project ID: 3C7EEE75E78D4C43ACFA1F85CB130A44
Procedure: POTTR SEVEN		Enroute: NO	Specialist: Mitchell, Tyler		Agreement Number:
Airport ID: KMIA			Airport City: MIAMI		State: FL
Facility ID:	Facility Type:	Flight Inspection Remark Type:			
<p>Procedure Comments:</p> <p>Procedure cancelled as part of the SOUTH FLORIDA METROPLEX</p> <p>Contact David Teffeteller: 204-457-1998</p>					

QUALITY
22
CHECKED
6.15.2021
BD



NOTE: Chart not to scale.

SE-3, 20 MAY 2021 to 17 JUN 2021

(NARRATIVE ON FOLLOWING PAGE)

NOTE: Turbojets accelerate to 250K as rapidly as feasible until reaching 10000 MSL, unless requested by ATC to do otherwise.

NOTE: DME required.
NOTE: File DP in remarks section of flight plan.
NOTE: Turbojets only, night use for noise abatement (2300 LCL-0600 LCL).
NOTE: RADAR required.

TAKEOFF MINIMUMS

Rwys 8L, 26L/R, 27, 30: NA-noise abatement.
Rwy 8R: Standard with minimum climb of 382'
Rwy 9: Standard with minimum climb of 312'
Rwy 12: Standard with minimum climb of 306'

MIAMI, FLORIDA
MI INTL (MIA)



DEPARTURE ROUTE DESCRIPTION

TAKEOFF RUNWAY 8R: Climb to intercept DHP VORTAC R-091 to POTTR INT, thence

TAKEOFF RUNWAYS 9, 12: Climbing left turn to intercept DHP VORTAC R-091 to POTTR INT, thence

. . . . turn left heading 060°. Expect RADAR vectors to appropriate transition.
All aircraft maintain 5000 or assigned lower altitude. Expect clearance to filed altitude ten (10) minutes after departure.

BEECH TRANSITION (POTTR7.BEECH): From over FLL VOR/DME on FLL R-104 to BEECH INT.

HEDLY TRANSITION (POTTR7.HEDLY): From over DRUUM DME FIX on PHK VOR/DME R-157 to HEDLY INT.

PADUS TRANSITION (POTTR7.PADUS): From over VKZ VOR/DME on VKZ R-058 to JANUS INT and ZFP VOR/DME R-245 to PADUS INT.

WINCO TRANSITION (POTTR7.WINCO): From over DHP VORTAC on DHP R-322 to WINCO INT.

SE-3, 20 MAY 2021 to 17 JUN 2021

SE-3, 20 MAY 2021 to 17 JUN 2021