

Flight Procedures Cover Page	Task Action: FLIGHT CHECK	Task Type: IAP	Estimated Chart Date: 04/22/2021	APWS Task ID: 4C35008AEF4243D282226DF514B5F029	APWS Project ID: C16B28F1C69D4F2F80B4C4E7D3395967
Procedure: ILS OR LOC RWY 31AMDT 1		Enroute: NO	Specialist: Tucker, Andre		Agreement Number:
Airport ID: KPUJ			Airport City: ATLANTA		State: GA
Facility ID: PUJ	Facility Type: ILS	Flight Inspection Remark Type: New FC Slot			
<p>Procedure Comments: VOR MON FOR ATL VORTAC DECOM.</p> <p>ACTIVE AIRNAV DATA 07-18-19 USED FOR KPUJ.</p> <p>PENDING AIRNAV DATA 02-25-21 USED FOR I-PUJ.</p> <p>CONTACT JOHN BORDY 405-954-0980.</p>					

QUALITY
24
CHECKED

QUALITY
15
CHECKED

FIPC BASIC FORM						
PROCEDURE: ILS OR LOC RWY 31AMDT 1			AIRPORT NAME: PAULDING NORTHWEST ATLANTA		AIRPORT ID: KPUJ	SPECIAL CONTROL NO: AP-01-196-21
FAC ID: PUJ		CITY: DALLAS			ST: GA	ORIG CHART DATE: 04/22/2021
DFL TYPE: PROC/A	THIRD PARTY: <input type="checkbox"/> YES	EST. TIME ON SITE: 0.4	REIMB. NUMBER:	PTS TASK ID:		
PREFLIGHT NOTES						
REVIEWER:					DATE:	
COMMENTS:					CHECK ONE: <input type="checkbox"/> FLT CK REQ <input type="checkbox"/> NFCR <input type="checkbox"/> REJECT	
						YES
					CPV COMPLETE?	
					X	
PROCEDURE RESULTS						
INSPECTION DATE: 02/17/2021	CREW #: VN426	N #: N75	INSTRUMENT PROCEDURE STATUS: <input checked="" type="checkbox"/> SAT <input type="checkbox"/> SAT W/CHANGES <input type="checkbox"/> UNSAT		ARINC CODING: <input type="checkbox"/> SAT <input checked="" type="checkbox"/> SAT/GOLD <input type="checkbox"/> UNSAT	
FLIGHT INSPECTOR SIGNATURE: robert e williams @ 02/18/2021 05:59			PRINTED NAME: WILLIAMS, ROBERT EMIL			NOTAM INITIATED? <input type="checkbox"/> YES <input checked="" type="checkbox"/> NO
FLIGHT INSPECTOR REMARKS: Special Number: AP-01-196-21. Paulding Norwest Atlanta, Atlanta, GA, ILS or LOC RWY 31, AMDT 1 SAT						
IN-FLIGHT OBSTACLE REPORT						
OBSTRUCTION ID #:	COORDINATES OR LOCATION:	GNSS ALTITUDE (MSL):	BAROMETRIC ALTITUDE (MSL):	HEIGHT ABOVE GROUND LEVEL:		

ATLANTA, GEORGIA

AL-10368 (FAA)

FIG

LOC/DME I-PUJ	APP CRS	Rwy Idg	5505
109.15	311°	TDZE	1283
Chan 28 (Y)		Apt Elev	1289

ILS or LOC RWY 31

PAULDING NORTHWEST ATLANTA (PUJ)

DME required. RADAR required for procedure entry.

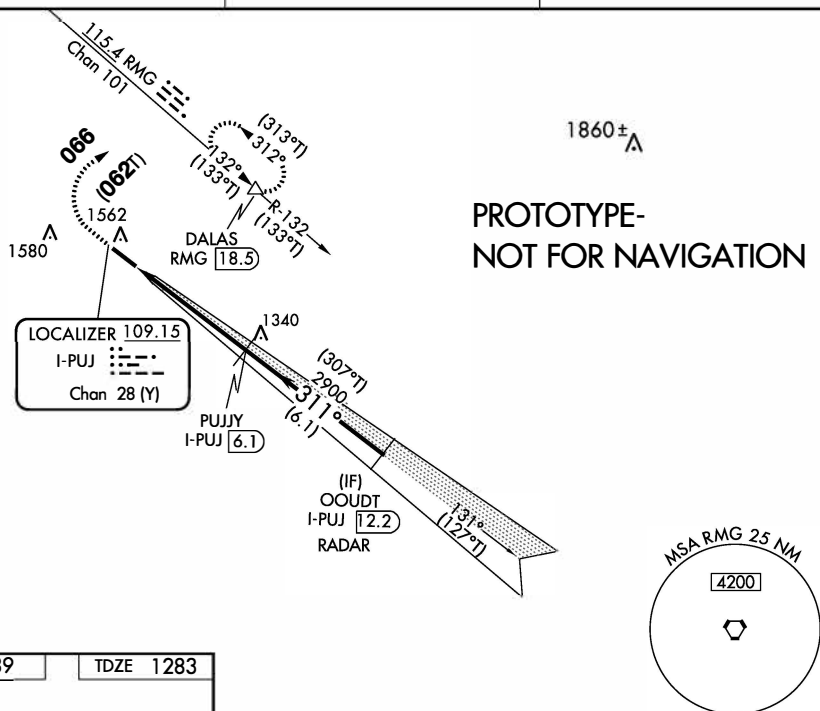
MISSED APPROACH: Climb to 3000 then climbing right turn to 3600 on heading **066** and RMG VORTAC R-132 to DALAS INT/RMG 18.5 DME and hold.

Autopilot coupled approach NA below 1680.

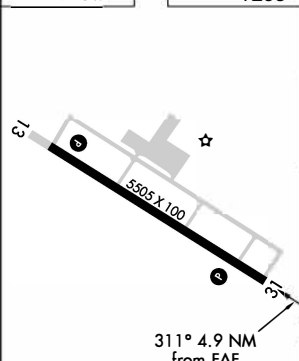
AWOS-3
126.225

ATLANTA APP CON
121.0 268.7

UNICOM
123.075 (CTAF) **0**



ELEV 1289 TDZE 1283



HIRL Rwy 13-31 **0**
REIL Rwy 13 and 31 **0**

FAF to MAP 4.9 NM

3000	3600	DALAS	PUJYY	OODT
↑	RMG R-132	△	I-PUJ 6.1	I-PUJ 12.2
*LOC only.	I-PUJ 1.2	*I-PUJ 2.3	2900	3000
	1.1 NM	3.8 NM	6.1 NM	GS 3.00° TCH 48
CATEGORY	A	B	C	D
S-ILS 31	1483-¾ 200 (200-¾)			
S-LOC 31	1680-1 397 (400-1)		1680-1½ 397 (400-1½)	
C CIRCLING	1880-1 591 (600-1)		1940-1¾ 651 (700-1¾)	
			1940-2 651 (700-2)	

ATLANTA, GEORGIA
Amdt 1 FIG

33°55'N-84°56'W

PAULDING NORTHWEST ATLANTA (PUJ)
ILS or LOC RWY 31

OLD

ATLANTA, GEORGIA

AL-10368 (FAA)

20086

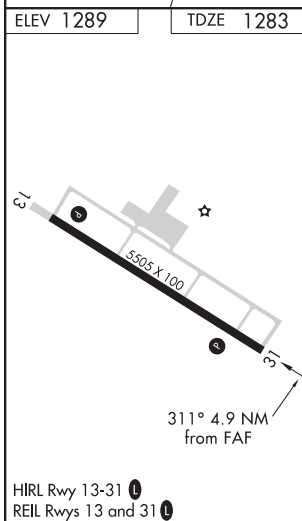
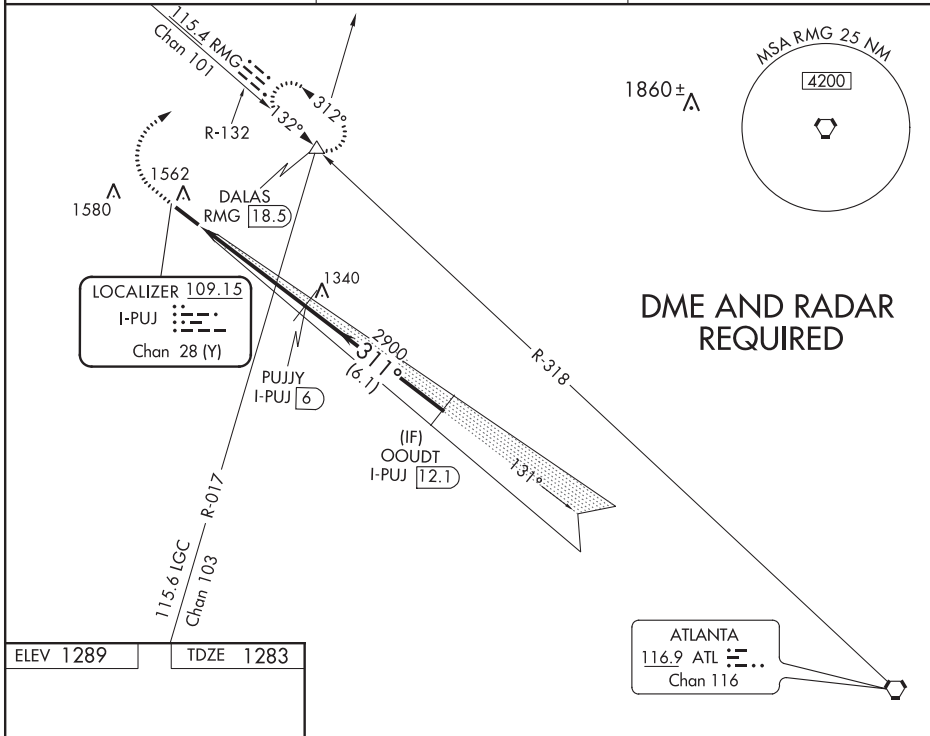
LOC/DME I-PUJ	APP CRS	Rwy Idg	5505
109.15	311°	TDZE	1283
Chan 28 (Y)		Apt Elev	1289

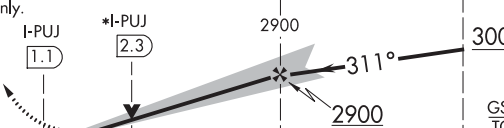
ILS or LOC/DME RWY 31 PAULDING NORTHWEST ATLANTA (PUJ)

NA VDP NA with Cartersville altimeter setting. When local altimeter setting not received, use Cartersville altimeter setting and increase all DA 106 feet and all MDA 120 feet and S-ILS 31 all Cats visibility ¼ mile and S-LOC 31 Cat C/D and Circling Cat C/D visibilities ½ mile. Autopilot coupled approach NA below 1680.

MISSED APPROACH: Climb to 3000 then climbing right turn to 3600 on RMG VORTAC R-132 to DALAS INT/RMG 18.5 DME and hold.

AWOS-3 126.225	ATLANTA APP CON 121.0 268.7	UNICOM 123.075 (CTAF)
-------------------	--------------------------------	--------------------------



3000	3600	DALAS	OOUDT	
↑	RMG R-132	△	I-PUJ [12.1]	
*LOC only.	I-PUJ [1.1]	*I-PUJ [2.3]	2900	3000
				
CATEGORY	A	B	C	D
S-ILS 31	1483-¾ 200 (200-¾)			
S-LOC 31	1680-1 397 (400-1)			1680-1¼ 397 (400-1¼)
CIRCLING	1880-1 591 (600-1)	1880-1½ 591 (600-1½)	1940-2 651 (700-2)	

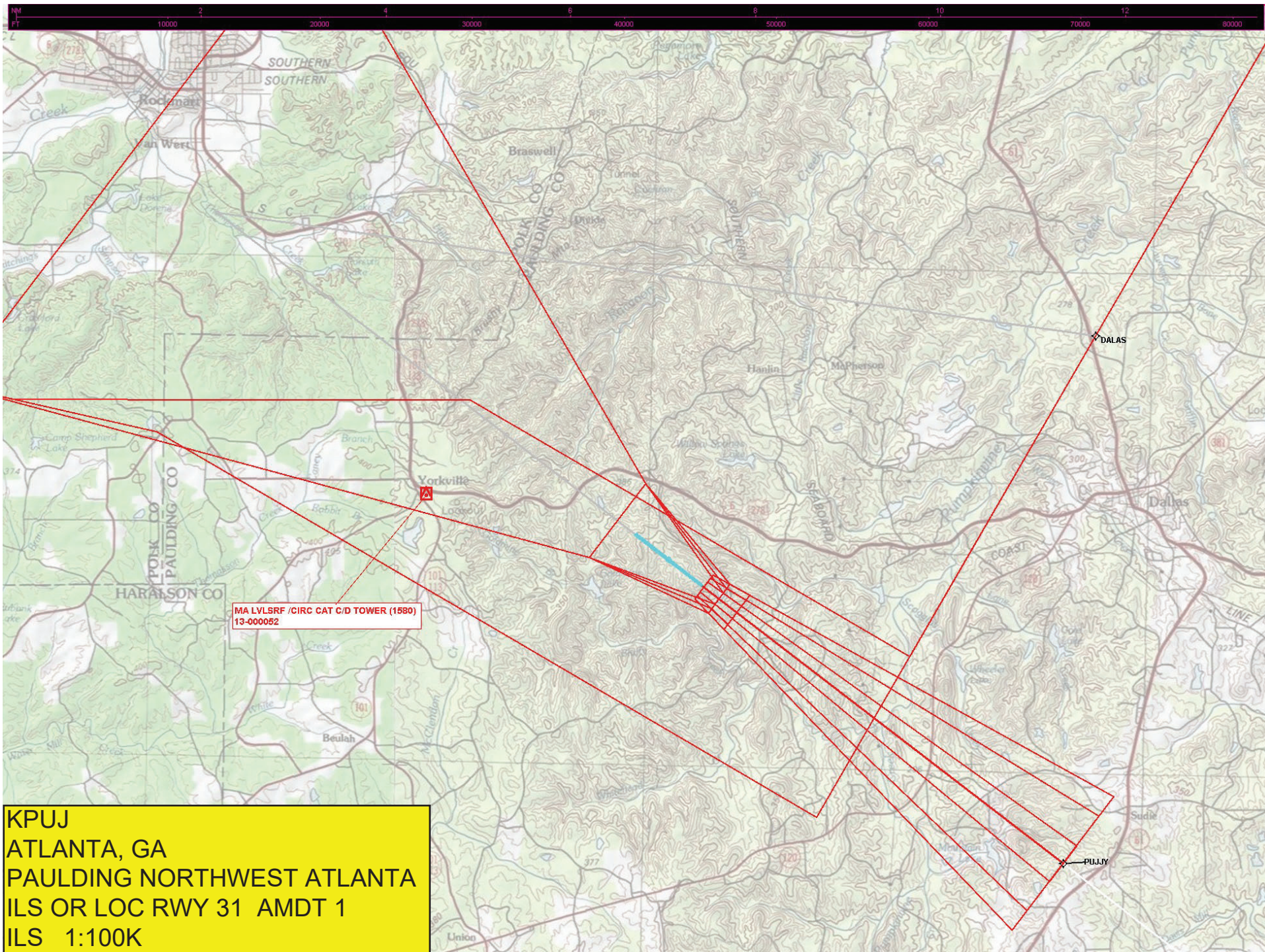
ATLANTA, GEORGIA
Orig-C 06DEC18

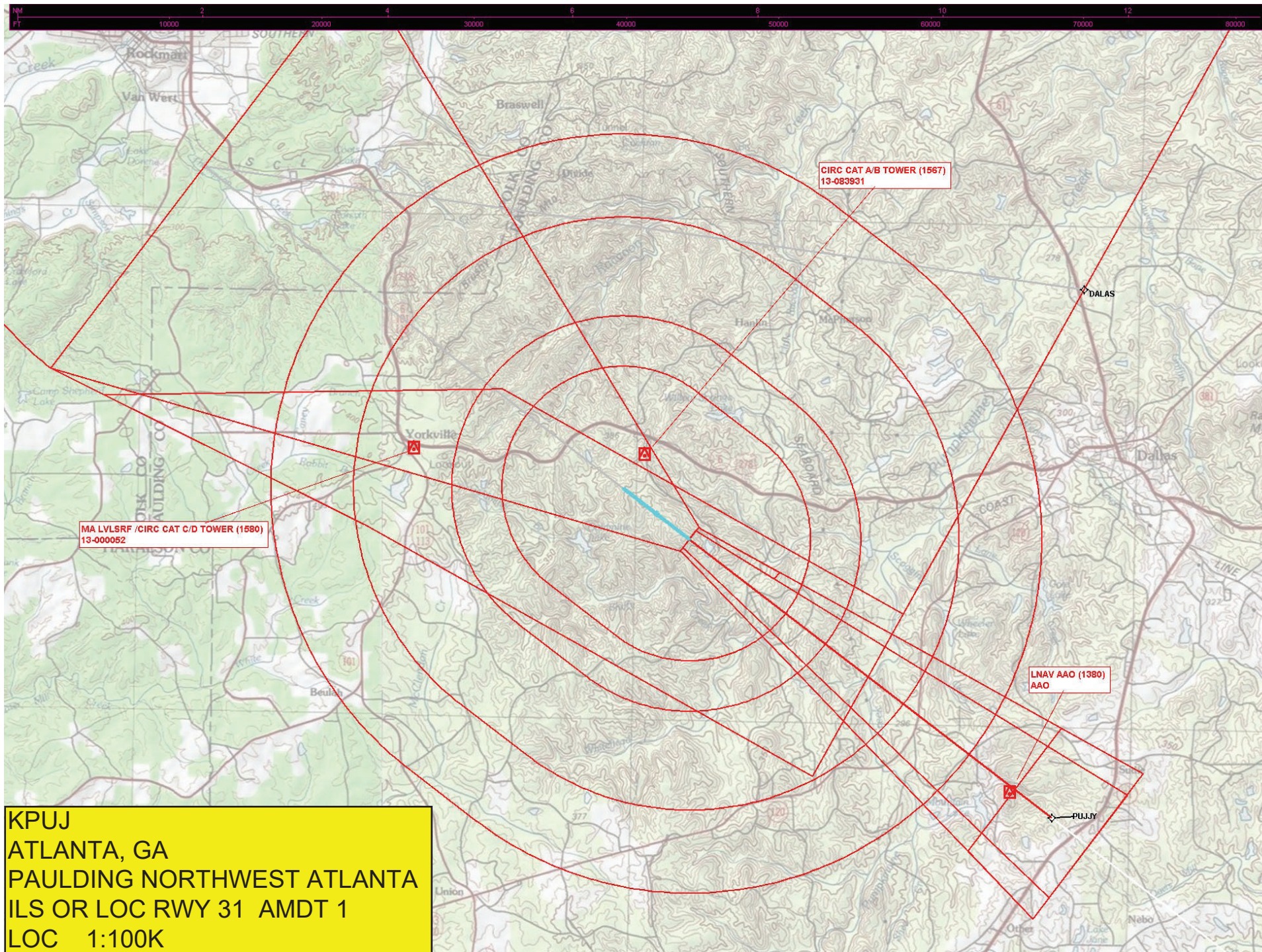
33°55'N-84°56'W

PAULDING NORTHWEST ATLANTA (PUJ)
ILS or LOC/DME RWY 31

SE-4, 08 OCT 2020 to 05 NOV 2020

SE-4, 08 OCT 2020 to 05 NOV 2020





KPUJ
ATLANTA, GA
PAULDING NORTHWEST ATLANTA
ILS OR LOC RWY 31 AMDT 1
LOC 1:100K

Federal Aviation Administration Categorical Exclusion Declaration

Date: 08/20/20

IFP: Erstfeld, David (David.F.Erstfeld@faa.gov)

Airport Contact: -

Request ID: KPUJ_20820

Single or Multiple Procedure: Multiple

Procedure Name(s): ILS or LOC/DME 31 Orig D RNAV (GPS) 13 Amdt 2 RNAV (GPS) 31 Amdt 1

Procedure Request Description:

Project initiated as part of ATL VOR decommissioning under VOR MON Program.

Declaration of Exclusion:

The FAA has reviewed the above referenced proposed action and it has been determined, by the undersigned, to be categorically excluded from further environmental documentation according to FAA Order 1050.1, "Environmental Impacts: Policies and Procedures." The implementation of this action will not result in any extraordinary circumstances in accordance with FAA Order 1050.1.

Basis for this Determination:

This review was conducted in accordance with policies and procedures in Department of Transportation Order 5610.1, "Procedures for Considering Environmental Impacts" and FAA Order 1050.1.

The applicable Categorical Exclusion is:

5-6.5.k: Publication of existing air traffic control procedures that do not essentially change existing tracks, create new tracks, change altitude, or change concentration of aircraft on these tracks. (ATO, AVS)

The above flight procedure has been developed within the accepted parameters.

Concurrence/Reviewed By:

Veronda Johnson

Date: August 20, 2020

Title:

Environmental Protection Specialist

Approved By:

Charles J Gibson

Date: August 20, 2020

Title:

Manager, Environmental, CI & NAS Analytics