

## DME DME Assessment Results for RAJEE4 path ELLBO\_OTAYY

### Results Summary

Flyability:	Completed
DME/DME:	Completed - No Critical DMEs
Name:	Theodore CTR Roller
Project File:	C:\Users\Theodore CTR Roller\Desktop\SoCal\ONT\32600 RAJEE SID\SubPak\20230612 32600 RAJEE SID.tgs
Output File:	C:\Users\Theodore CTR Roller\Desktop\SoCal\ONT\32600 RAJEE SID\SubPak\20230613\KONT [IFPA] RAJEE4 20230614_1341 MDT\ELLBO_OTAYY\KONT RAJEE4 SID ELLBO OTAYY 20230614_1341 MDT.pdf
Procedure Name:	RAJEE4
Software: DmeDmePlugin:	7.1.0
Date/Time:	06/14/2023 13:41 MDT
Databases:	DTED Level 0 Max

### Failures

No Failures

### Warnings

No Warnings

### Informational

No Informational

### Notes For Flight Check

None

### Flight Plan

Name	Type	Lat/Lon	Altitude (ft)	VNAV Mode	Ground Speed (kts)	Turn Type	Leg Type
ELLBO	WP	N33° 42' 38.63", W117° 21' 21.48"	5000	VNAV	200	FLY_BY	TF
JUMPA	WP	N33° 37' 01.83", W117° 16' 41.38"	5800	VNAV	200	FLY_BY	TF
RORBE	WP	N33° 27' 00.00", W117° 10' 00.00"	5800	VNAV	200	FLY_BY	TF
OTAYY	WP	N32° 39' 54.45", W117° 06' 58.45"	9000	VNAV	200	FLY_BY	TF

### Flyability

Flight Type:	SID
Selected Airport:	KONT [IFPA]
Climb Gradient:	None assigned
Speeds:	130 at the Runway DER
	145 at the end of the VA or VI leg
	200 Ground Speed to 11000 FT
	240 Ground Speed to 18000 FT
	260 Ground Speed to 24000 FT
	340 Ground Speed above 24000 FT
Descent During a Turn:	Allowed
VNAV Mode:	Flight Plan

## DME DME Assessment Results for RAJEE4 path ELLBO\_OTAYY

DME/DME	
RNP:	RNP 2
Flight Mode:	Manual
Line of Sight (DTED Level 0 Max):	Evaluated
Inertial Drift:	Enabled
Initial Drift:	0.558 NM
INS Drift Rate:	8.0 NM/Hour
Range Mode:	OSV
RNP Edges:	Evaluated
Min DME Range:	3.0 NM
DME Types:	DME, VOR-DME, VORTAC
DME Include Angles:	30 to 150
Critical DMEs:	Allowed
DoD Facilities:	Not included
Foreign Facilities:	Not included
High DMEs:	Included
Low DMEs:	Included
Terminal DMEs:	Included
Flight Check DMEs:	Not selected
Higher Altitudes:	Not Evaluated
Near Maximum Altitude:	Not Evaluated
Automatic ESVs:	Enabled
Disabled DMEs:	None

DME/DME (Continued)										
DMEs Used										
#	Name	Lat/Lon	MAGVAR	Range	Type	Source	Critical	Status	Time	Distance
1	POM	N34° 04' 42.20", W117° 47' 13.47"	15.0 E	40	L	IFPA	NO	Enabled	2.1 %	2.1 %
2	MZB	N32° 46' 55.95", W117° 13' 31.52"	15.0 E	130	H	IFPA	NO	Enabled	43.2 %	43.2 %
3	JLI	N33° 08' 25.65", W116° 35' 09.37"	15.0 E	40	L	IFPA	NO	Enabled	55.3 %	55.3 %
4	OCN	N33° 14' 26.28", W117° 25' 03.79"	15.0 E	130	H	IFPA	NO	Enabled	80 %	80 %
5	PDZ	N33° 55' 06.01", W117° 31' 47.99"	15.0 E	130	H	IFPA	NO	Enabled	24.7 %	24.7 %
6	PGY	N32° 36' 37.22", W116° 58' 44.76"	14.0 E	130	H	IFPA	NO	Enabled	48.2 %	48.2 %

Flight Check DME Selection						
Distance [NM]	Selected DMEs					Alternate
0.0						
6.9	POM	OCN	PDZ			
8.3	PDZ	OCN				
21.8						
22.3	PDZ	OCN				
23.6						
25.6	PDZ	OCN	MZB	JLI		
25.7	OCN	JLI				
28.0						
28.2	MZB	JLI	OCN			
30.6	MZB	JLI	OCN	PGY		
55.3	OCN	JLI	PGY			
60.9	PGY	JLI	OCN	MZB		
62.1						

# DME DME Assessment Results for RAJEE4 path ELLBO\_OTAYY

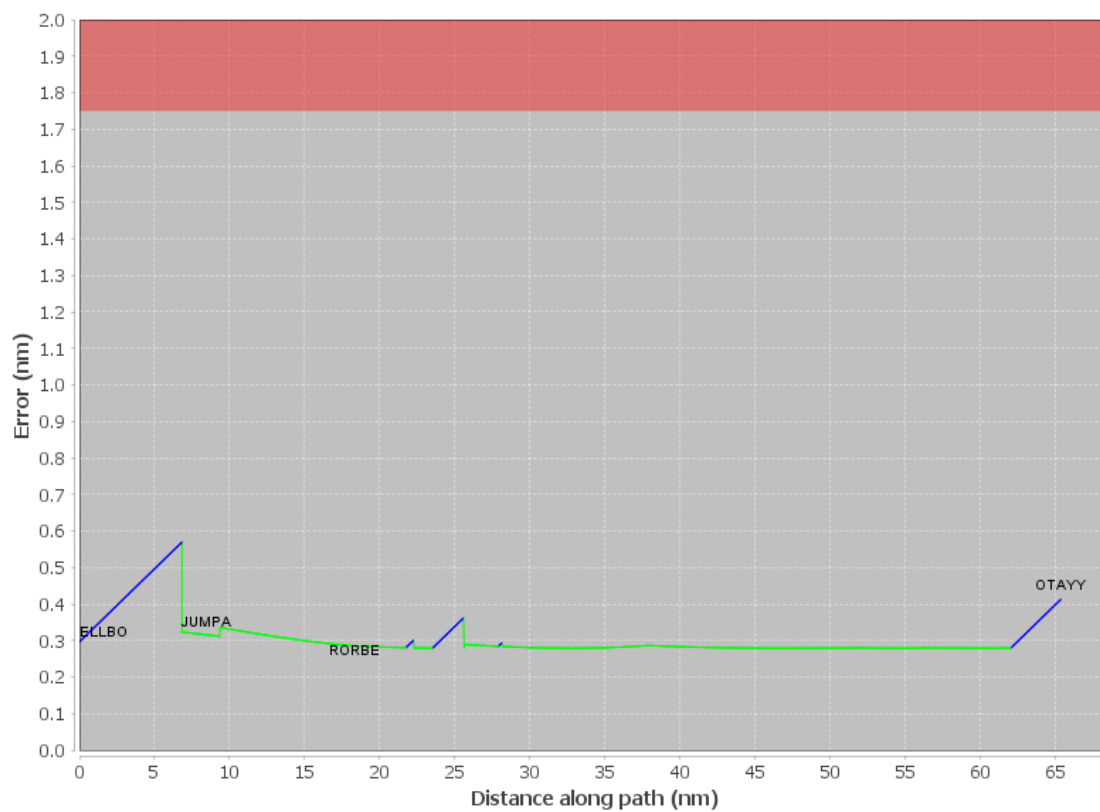
Inertial Drift Segments			
#	Start Location	End Location	Length [NM]
1	N33° 42' 38.63", W117° 21' 21.48"	N33° 37' 01.83", W117° 16' 41.38"	6.8277
2	N33° 23' 30.10", W117° 09' 46.40"	N33° 23' 00.11", W117° 09' 44.46"	0.4996
3	N33° 21' 43.48", W117° 09' 39.50"	N33° 19' 40.20", W117° 09' 31.53"	2.0538
4	N33° 17' 20.26", W117° 09' 22.48"	N33° 17' 06.94", W117° 09' 21.62"	0.222
5	N32° 43' 11.05", W117° 07' 10.98"	N32° 39' 54.45", W117° 06' 58.45"	3.2749

Available DMEs by Waypoints			
Waypoint Before	Waypoint After	DME List	Suggested DMEs
ELLBO	JUMPA		
JUMPA	RORBE	PDZ, OCN, POM	
RORBE	OTAYY	PGY, MZB, JLI, PDZ, OCN	

User Data Files								
#	File Name							
1	New Analysis.udt							
User DMEs								
#	Name	Lat/Lon	MAGVAR	Range	Elevation [ft]	Frequency	Replaces	Status
1	LAX FAA 694116-37 LAX [IFPA]	N33° 55' 59.34", W118° 25' 55.25"	15.0 E	130	188.4	113.6	LAX FAA 694116-37	
ESV:		Bearing [True]: 81.0° to 109.0° Bearing [Mag]: 66.0° to 94.0°				Arc Distance: Out to 55.0 NM Altitude: 3200.0 to 16000.0 ft		
2	SXC FAA 190728-4 SXC [IFPA]	N33° 22' 30.20", W118° 25' 11.68"	15.0 E	40	2090	111.4	SXC FAA 190728-4	
ESV:		Bearing [True]: 54.0° to 70.0° Bearing [Mag]: 39.0° to 55.0°				Arc Distance: Out to 61.0 NM Altitude: 5000.0 to 22000.0 ft		
3	POM FAA 694085 - 016 POM [IFPA]	N34° 04' 42.20", W117° 47' 13.47"	15.0 E	40	1265.5	110.4	POM FAA 694085 - 016	
ESV:		Bearing [True]: 111.0° to 120.0° Bearing [Mag]: 96.0° to 105.0°				Arc Distance: Out to 62.0 NM Altitude: 8000.0 to 19300.0 ft		
4	SXC FAA 190728 - 025 SXC [IFPA]	N33° 22' 30.20", W118° 25' 11.68"	15.0 E	40	2090	111.4	SXC FAA 190728 - 025	
ESV:		Bearing [True]: 76.0° to 82.0° Bearing [Mag]: 61.0° to 67.0°				Arc Distance: Out to 89.0 NM Altitude: 8000.0 to 20100.0 ft		
5	POM FAA 694085-11 POM [IFPA]	N34° 04' 42.20", W117° 47' 13.47"	15.0 E	40	1265.5	110.4	POM FAA 694085-11	
ESV:		Bearing [True]: 94.0° to 136.0° Bearing [Mag]: 79.0° to 121.0°				Arc Distance: Out to 59.0 NM Altitude: 6000.0 to 20000.0 ft		

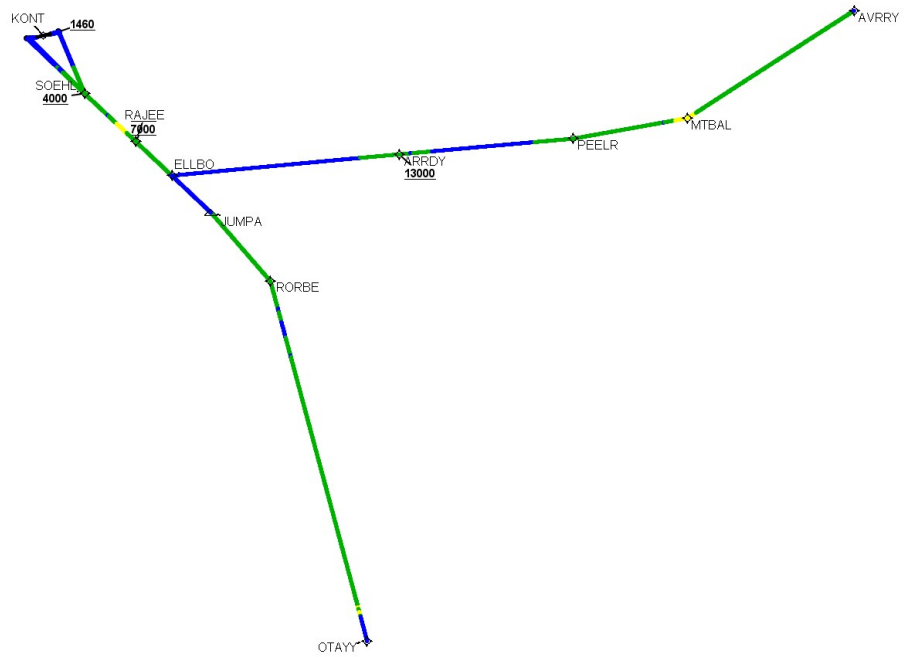
# DME DME Assessment Results for RAJEE4 path ELLBO\_OTAYY

## DME Error



Graphic Depiction 1

## DME DME Assessment Results for RAJEE4 path ELLBO\_OTAYY



### Graphic Depiction 2



## DME DME Assessment Results for RAJEE4 path KONT:RW08L:DER\_AVRRY

### Results Summary

Flyability:	Completed
DME/DME:	Completed - No Critical DMEs
Name:	Theodore CTR Roller
Project File:	C:\Users\Theodore CTR Roller\Desktop\SoCal\ONT\32600 RAJEE SID\SubPak\20230612 32600 RAJEE SID.tgs
Output File:	C:\Users\Theodore CTR Roller\Desktop\SoCal\ONT\32600 RAJEE SID\SubPak\20230613\KONT [IFPA] RAJEE4 20230614_1341 MDT\KONT-RW08L-DER_AVRRY\KONT RAJEE4 SID RW08L AVRRY 20230614_1341 MDT.pdf
Procedure Name:	RAJEE4
Software: DmeDmePlugin:	7.1.0
Date/Time:	06/14/2023 13:41 MDT
Databases:	DTED Level 0 Max

### Failures

No Failures

### Warnings

No Warnings

### Informational

No Informational

### Notes For Flight Check

None

### Flight Plan

Name	Type	Lat/Lon	Altitude (ft)	VNAV Mode	Ground Speed (kts)	Turn Type	Leg Type
KONT:RW08L:DER	WP	N34° 03' 24.83", W117° 34' 57.21"	931.8	VNAV	130	FLY_OVER	TF
SOEHL	WP	N33° 55' 05.52", W117° 31' 47.58"	4000	VNAV	200	FLY_BY	TF
RAJEE	WP	N33° 47' 47.81", W117° 25' 40.55"	5000	VNAV	200	FLY_BY	TF
ELLBO	WP	N33° 42' 38.63", W117° 21' 21.48"	5000	VNAV	200	FLY_BY	TF
ARRDY	WP	N33° 39' 18.05", W116° 46' 40.81"	7600	VNAV	200	FLY_BY	TF
PEELR	WP	N33° 36' 39.62", W116° 20' 12.96"	13000	VNAV	240	FLY_BY	TF
MTBAL	WP	N33° 36' 11.93", W116° 02' 32.30"	13000	VNAV	240	FLY_BY	TF
AVRRY	WP	N33° 45' 07.35", W115° 34' 14.56"	13000	VNAV	240	FLY_BY	TF
Climb Gradient: 500.0 ft/NM up to 1460.0 ft MSL 200.0 ft/NM							

# DME DME Assessment Results for RAJEE4 path KONT:RW08L:DER\_AVRRY

Flyability	
Flight Type:	SID
Selected Airport:	KONT [IFPA]
Climb Gradient:	500.0 ft/NM up to 1460.0 ft MSL 200.0 ft/NM
Speeds:	130 at the Runway DER
	145 at the end of the VA or VI leg
	200 Ground Speed to 11000 FT
	240 Ground Speed to 18000 FT
	260 Ground Speed to 24000 FT
	340 Ground Speed above 24000 FT
Descent During a Turn:	Allowed
VNAV Mode:	Flight Plan

DME/DME	
RNP:	RNP 2
Flight Mode:	Manual
Line of Sight (DTED Level 0 Max):	Evaluated
Inertial Drift:	Enabled
Initial Drift:	0.558 NM
INS Drift Rate:	8.0 NM/Hour
Range Mode:	OSV
RNP Edges:	Evaluated
Min DME Range:	3.0 NM
DME Types:	DME, VOR-DME, VORTAC
DME Include Angles:	30 to 150
Critical DMEs:	Allowed
DoD Facilities:	Not included
Foreign Facilities:	Not included
High DMEs:	Included
Low DMEs:	Included
Terminal DMEs:	Included
Flight Check DMEs:	Not selected
Higher Altitudes:	Not Evaluated
Near Maximum Altitude:	Not Evaluated
Automatic ESVs:	Enabled
Disabled DMEs:	None

DME/DME (Continued)										
DMEs Used										
#	Name	Lat/Lon	MAGVAR	Range	Type	Source	Critical	Status	Time	Distance
1	PSP	N33° 52' 12.05", W116° 25' 47.22"	13.0 E	40	L	IFPA	NO	Enabled	28.6 %	32.5 %
2	TRM	N33° 37' 41.15", W116° 09' 36.70"	13.0 E	130	H	IFPA	NO	Enabled	26.3 %	29.8 %
3	POM	N34° 04' 42.20", W117° 47' 13.47"	15.0 E	40	L	IFPA	NO	Enabled	24.1 %	22.7 %
4	SLI	N33° 46' 59.88", W118° 03' 17.13"	15.0 E	40	L	IFPA	NO	Enabled	10.2 %	9.2 %
5	TNP	N34° 06' 44.04", W115° 46' 11.66"	15.0 E	40	L	IFPA	NO	Enabled	20.8 %	24.2 %
6	LAX	N33° 55' 59.34", W118° 25' 55.25"	15.0 E	130	H	IFPA	NO	Enabled	3 %	2.9 %
7	JLI	N33° 08' 25.65", W116° 35' 09.37"	15.0 E	40	L	IFPA	NO	Enabled	22.4 %	23.9 %
8	SXC	N33° 22' 30.20", W118° 25' 11.68"	15.0 E	40	L	IFPA	NO	Enabled	10.5 %	10.2 %
9	PDZ	N33° 55' 06.01", W117° 31' 47.99"	15.0 E	130	H	IFPA	NO	Enabled	4.1 %	4 %



# DME DME Assessment Results for RAJEE4 path KONT:RW08L:DER\_AVRRY

## Flight Check DME Selection

Distance [NM]	Selected DMEs					Alternate
0.0						
5.9	POM	SLI				
13.5						
13.6	POM	SLI				
14.5	SXC	POM	SLI	LAX		
15.1	SXC	PDZ	POM	SLI	LAX	
16.8	SXC	POM				
19.3	SXC	POM	LAX			
20.5	SXC	POM				
24.6						
48.6	PDZ	JLI				
49.5	PDZ	JLI	POM			
51.7	POM	JLI				
55.1						
55.5	POM	JLI				
56.1	SXC	JLI	POM			
57.5	POM	SXC				
57.9						
71.0	PSP	TRM	JLI			
79.1	PSP	JLI				
87.6						
87.8	PSP	TNP				
89.2	PSP	JLI	TNP	TRM		
92.1	TNP	TRM	PSP			
109.1	TNP	TRM				
115.9						

## Inertial Drift Segments

#	Start Location	End Location	Length [NM]
1	N34° 03' 24.83", W117° 34' 54.66"	N33° 58' 39.52", W117° 32' 36.11"	5.8494
2	N33° 51' 51.28", W117° 29' 04.55"	N33° 51' 43.08", W117° 28' 57.66"	0.1667
3	N33° 42' 44.06", W117° 21' 26.02"	N33° 39' 54.29", W116° 52' 49.19"	24.0796
4	N33° 39' 09.12", W116° 45' 09.69"	N33° 39' 06.39", W116° 44' 41.96"	0.3885
5	N33° 38' 49.24", W116° 41' 47.67"	N33° 37' 16.07", W116° 26' 13.15"	13.0965
6	N33° 36' 18.13", W116° 06' 21.62"	N33° 36' 17.88", W116° 06' 12.06"	0.1331
7	N33° 45' 04.54", W115° 34' 23.53"	N33° 45' 07.35", W115° 34' 14.56"	0.1332

## Available DMEs by Waypoints

Waypoint Before	Waypoint After	DME List	Suggested DMEs
KONT:RW08L:DER	SOEHL	SLI, POM	
SOEHL	RAJEE	SLI, LAX, PDZ, POM, SXC	
RAJEE	ELLBO	LAX, SXC, POM	
ELLBO	ARRDY	JLI, PDZ, POM	
ARRDY	PEELR	JLI, PSP, TRM, POM, SXC	
PEELR	MTBAL	JLI, TNP, PSP, TRM	
MTBAL	AVRRY	JLI, TNP, PSP, TRM	

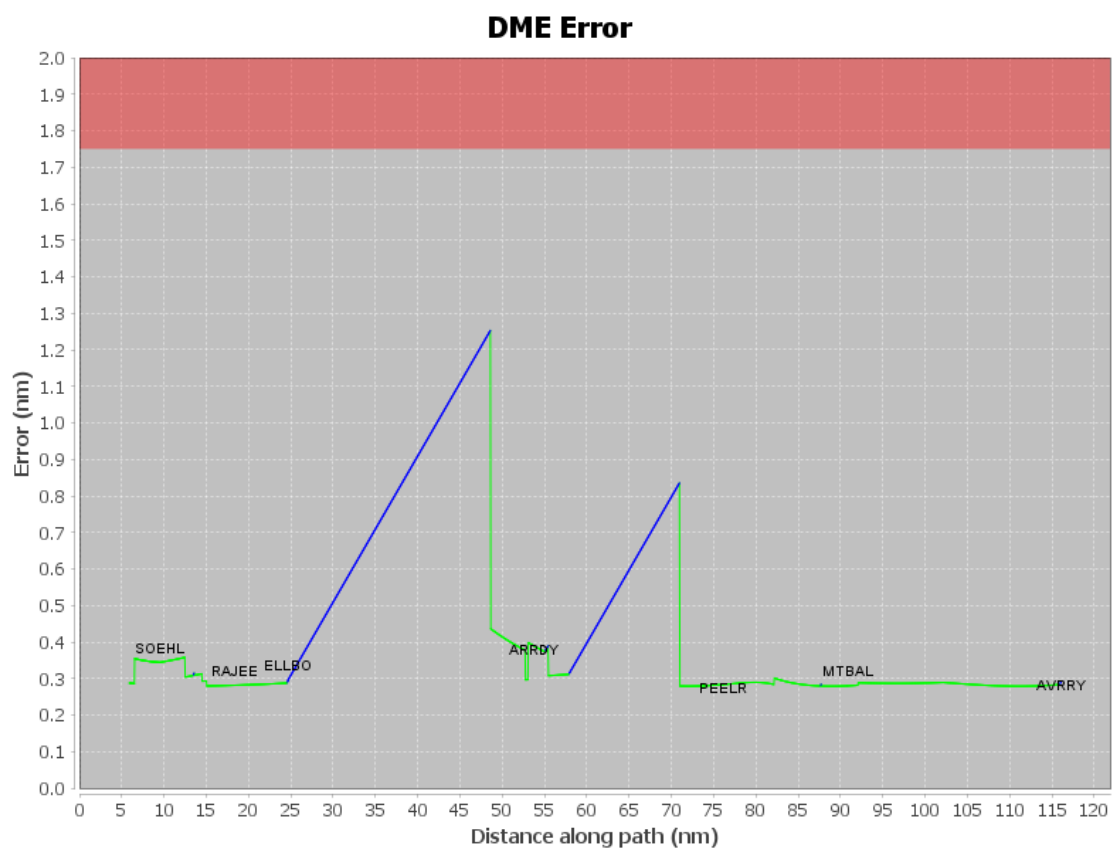
# DME DME Assessment Results for RAJEE4 path KONT:RW08L:DER\_AVRRY

## User Data Files

#	File Name
1	New Analysis.udt

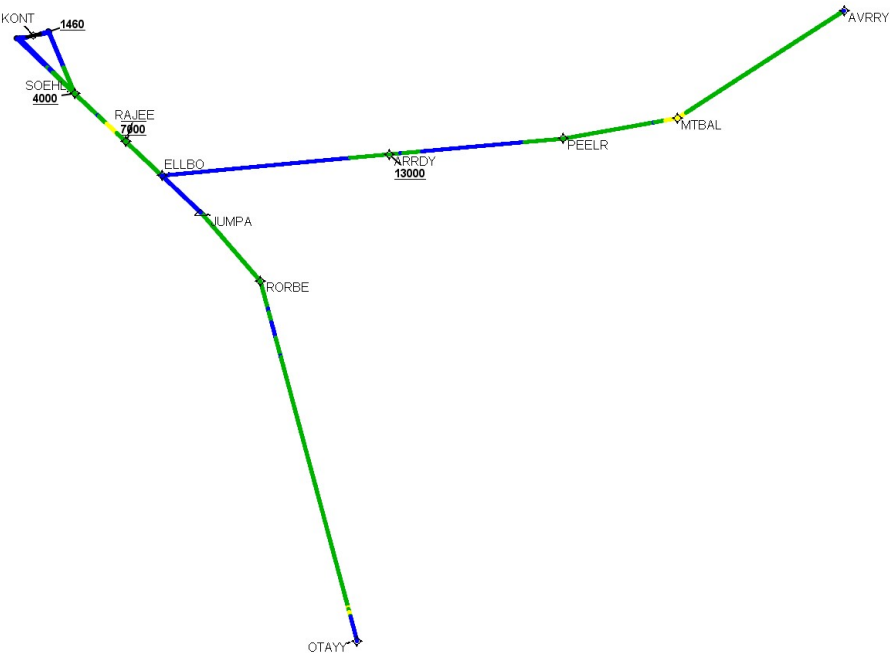
## User DMEs

#	Name	Lat/Lon	MAGVAR	Range	Elevation [ft]	Frequency	Replaces	Status
1	LAX FAA 694116-37 LAX [IFPA]	N33° 55' 59.34", W118° 25' 55.25"	15.0 E	130	188.4	113.6	LAX FAA 694116-37	
ESV:		Bearing [True]: 81.0° to 109.0° Bearing [Mag]: 66.0° to 94.0°				Arc Distance: Out to 55.0 NM Altitude: 3200.0 to 16000.0 ft		
2	SXC FAA 190728-4 SXC [IFPA]	N33° 22' 30.20", W118° 25' 11.68"	15.0 E	40	2090	111.4	SXC FAA 190728-4	
ESV:		Bearing [True]: 54.0° to 70.0° Bearing [Mag]: 39.0° to 55.0°				Arc Distance: Out to 61.0 NM Altitude: 5000.0 to 22000.0 ft		
3	POM FAA 694085 - 016 POM [IFPA]	N34° 04' 42.20", W117° 47' 13.47"	15.0 E	40	1265.5	110.4	POM FAA 694085 - 016	
ESV:		Bearing [True]: 111.0° to 120.0° Bearing [Mag]: 96.0° to 105.0°				Arc Distance: Out to 62.0 NM Altitude: 8000.0 to 19300.0 ft		
4	SXC FAA 190728 - 025 SXC [IFPA]	N33° 22' 30.20", W118° 25' 11.68"	15.0 E	40	2090	111.4	SXC FAA 190728 - 025	
ESV:		Bearing [True]: 76.0° to 82.0° Bearing [Mag]: 61.0° to 67.0°				Arc Distance: Out to 89.0 NM Altitude: 8000.0 to 20100.0 ft		
5	POM FAA 694085-11 POM [IFPA]	N34° 04' 42.20", W117° 47' 13.47"	15.0 E	40	1265.5	110.4	POM FAA 694085-11	
ESV:		Bearing [True]: 94.0° to 136.0° Bearing [Mag]: 79.0° to 121.0°				Arc Distance: Out to 59.0 NM Altitude: 6000.0 to 20000.0 ft		



DME DME Assessment Results for RAJEE4 path KONT:RW08L:DER\_AVRRY

Graphic Depiction 1



DME DME Assessment Results for RAJEE4 path KONT:RW08L:DER\_AVRRY

Graphic Depiction 2



## DME DME Assessment Results for RAJEE4 path KONT:RW08R:DER\_SOEHL

### Results Summary

Flyability:	Completed
DME/DME:	Completed - No Critical DMEs
Name:	Theodore CTR Roller
Project File:	C:\Users\Theodore CTR Roller\Desktop\SoCal\ONT\32600 RAJEE SID\SubPak\20230612 32600 RAJEE SID.tgs
Output File:	C:\Users\Theodore CTR Roller\Desktop\SoCal\ONT\32600 RAJEE SID\SubPak\20230613\KONT [IFPA] RAJEE4 20230614_1341 MDT\KONT-RW08R-DER_SOEHL\KONT RAJEE4 SID RW08R SOEHL 20230614_1341 MDT.pdf
Procedure Name:	RAJEE4
Software: DmeDmePlugin:	7.1.0
Date/Time:	06/14/2023 13:41 MDT
Databases:	DTED Level 0 Max

### Failures

No Failures

### Warnings

No Warnings

### Informational

No Informational

### Notes For Flight Check

None

### Flight Plan

Name	Type	Lat/Lon	Altitude (ft)	VNAV Mode	Ground Speed (kts)	Turn Type	Leg Type
KONT:RW08R:DER	WP	N34° 03' 17.90", W117° 34' 57.20"	926.2	VNAV	130	FLY_OVER	TF
SOEHL	WP	N33° 55' 05.52", W117° 31' 47.58"	4000	VNAV	200	FLY_BY	TF
Climb Gradient: 500.0 ft/NM up to 1460.0 ft MSL 200.0 ft/NM							

### Flyability

Flight Type:	SID
Selected Airport:	KONT [IFPA]
Climb Gradient:	500.0 ft/NM up to 1460.0 ft MSL 200.0 ft/NM
Speeds:	130 at the Runway DER
	145 at the end of the VA or VI leg
	200 Ground Speed to 11000 FT
	240 Ground Speed to 18000 FT
	260 Ground Speed to 24000 FT
	340 Ground Speed above 24000 FT
Descent During a Turn:	Allowed
VNAV Mode:	Flight Plan

# DME DME Assessment Results for RAJEE4 path KONT:RW08R:DER\_SOEHL

DME/DME	
RNP:	RNP 2
Flight Mode:	Manual
Line of Sight (DTED Level 0 Max):	Evaluated
Inertial Drift:	Enabled
Initial Drift:	0.558 NM
INS Drift Rate:	8.0 NM/Hour
Range Mode:	OSV
RNP Edges:	Evaluated
Min DME Range:	3.0 NM
DME Types:	DME, VOR-DME, VORTAC
DME Include Angles:	30 to 150
Critical DMEs:	Allowed
DoD Facilities:	Not included
Foreign Facilities:	Not included
High DMEs:	Included
Low DMEs:	Included
Terminal DMEs:	Included
Flight Check DMEs:	Not selected
Higher Altitudes:	Not Evaluated
Near Maximum Altitude:	Not Evaluated
Automatic ESVs:	Enabled
Disabled DMEs:	None

DME/DME (Continued)										
DMEs Used										
#	Name	Lat/Lon	MAGVAR	Range	Type	Source	Critical	Status	Time	Distance
1	POM	N34° 04' 42.20", W117° 47' 13.47"	15.0 E	40	L	IFPA	NO	Enabled	35.2 %	38.4 %
2	SLI	N33° 46' 59.88", W118° 03' 17.13"	15.0 E	40	L	IFPA	NO	Enabled	35.2 %	38.4 %

Flight Check DME Selection						
Distance [NM]	Selected DMEs					Alternate
0.0						
5.8	POM	SLI				

Inertial Drift Segments			
#	Start Location	End Location	Length [NM]
1	N34° 03' 17.90", W117° 34' 54.63"	N33° 58' 38.58", W117° 32' 36.23"	5.7599

Available DMEs by Waypoints			
Waypoint Before	Waypoint After	DME List	Suggested DMEs
KONT:RW08R:DER	SOEHL	SLI, POM	

# DME DME Assessment Results for RAJEE4 path KONT:RW08R:DER\_SOEHL

## User Data Files

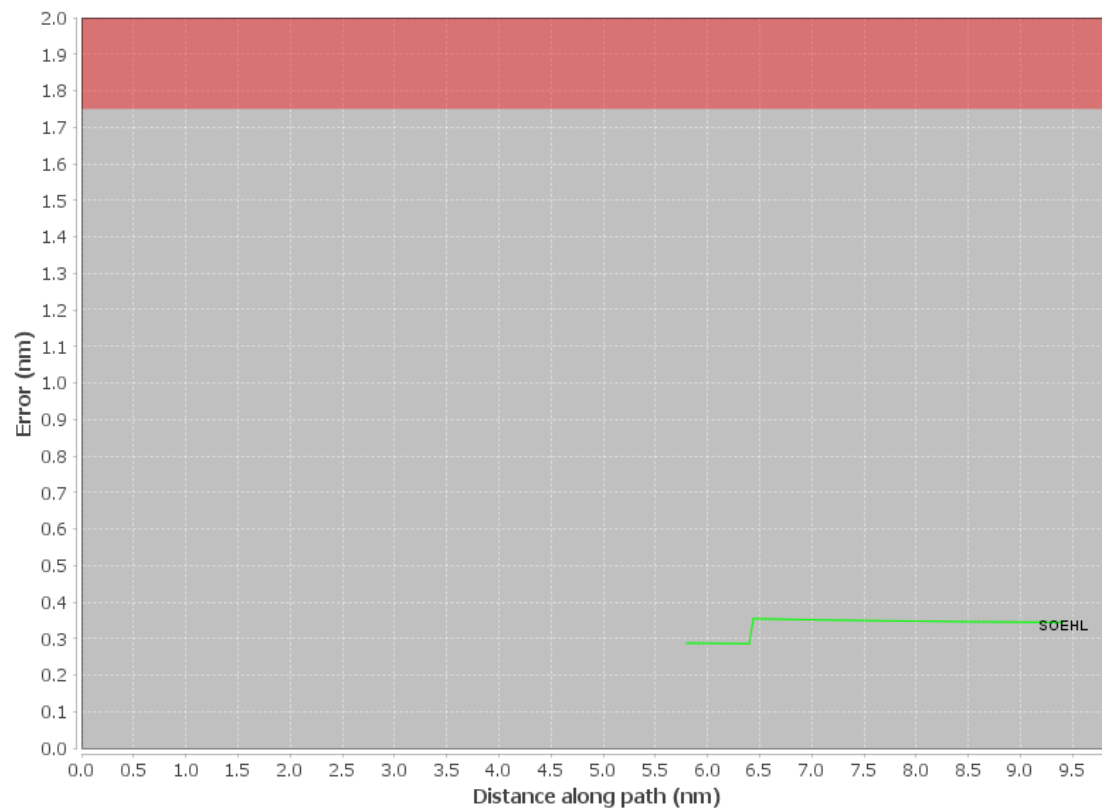
#	File Name
1	New Analysis.udt

## User DMEs

#	Name	Lat/Lon	MAGVAR	Range	Elevation [ft]	Frequency	Replaces	Status
1	LAX FAA 694116-37 LAX [IFPA]	N33° 55' 59.34", W118° 25' 55.25"	15.0 E	130	188.4	113.6	LAX FAA 694116-37	
ESV:		Bearing [True]: 81.0° to 109.0° Bearing [Mag]: 66.0° to 94.0°				Arc Distance: Out to 55.0 NM Altitude: 3200.0 to 16000.0 ft		
2	SXC FAA 190728-4 SXC [IFPA]	N33° 22' 30.20", W118° 25' 11.68"	15.0 E	40	2090	111.4	SXC FAA 190728-4	
ESV:		Bearing [True]: 54.0° to 70.0° Bearing [Mag]: 39.0° to 55.0°				Arc Distance: Out to 61.0 NM Altitude: 5000.0 to 22000.0 ft		
3	POM FAA 694085 - 016 POM [IFPA]	N34° 04' 42.20", W117° 47' 13.47"	15.0 E	40	1265.5	110.4	POM FAA 694085 - 016	
ESV:		Bearing [True]: 111.0° to 120.0° Bearing [Mag]: 96.0° to 105.0°				Arc Distance: Out to 62.0 NM Altitude: 8000.0 to 19300.0 ft		
4	SXC FAA 190728 - 025 SXC [IFPA]	N33° 22' 30.20", W118° 25' 11.68"	15.0 E	40	2090	111.4	SXC FAA 190728 - 025	
ESV:		Bearing [True]: 76.0° to 82.0° Bearing [Mag]: 61.0° to 67.0°				Arc Distance: Out to 89.0 NM Altitude: 8000.0 to 20100.0 ft		
5	POM FAA 694085-11 POM [IFPA]	N34° 04' 42.20", W117° 47' 13.47"	15.0 E	40	1265.5	110.4	POM FAA 694085-11	
ESV:		Bearing [True]: 94.0° to 136.0° Bearing [Mag]: 79.0° to 121.0°				Arc Distance: Out to 59.0 NM Altitude: 6000.0 to 20000.0 ft		

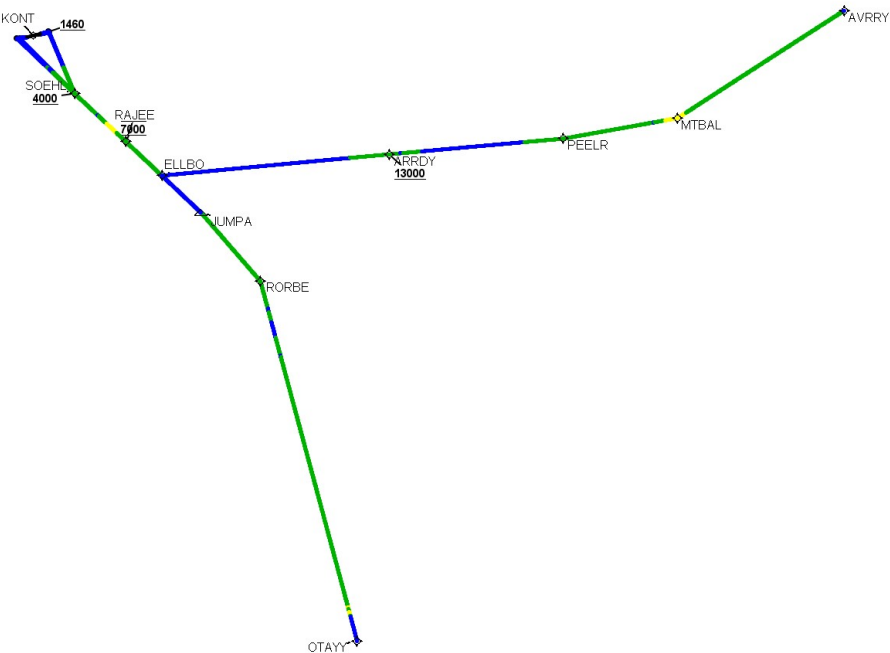


### DME Error



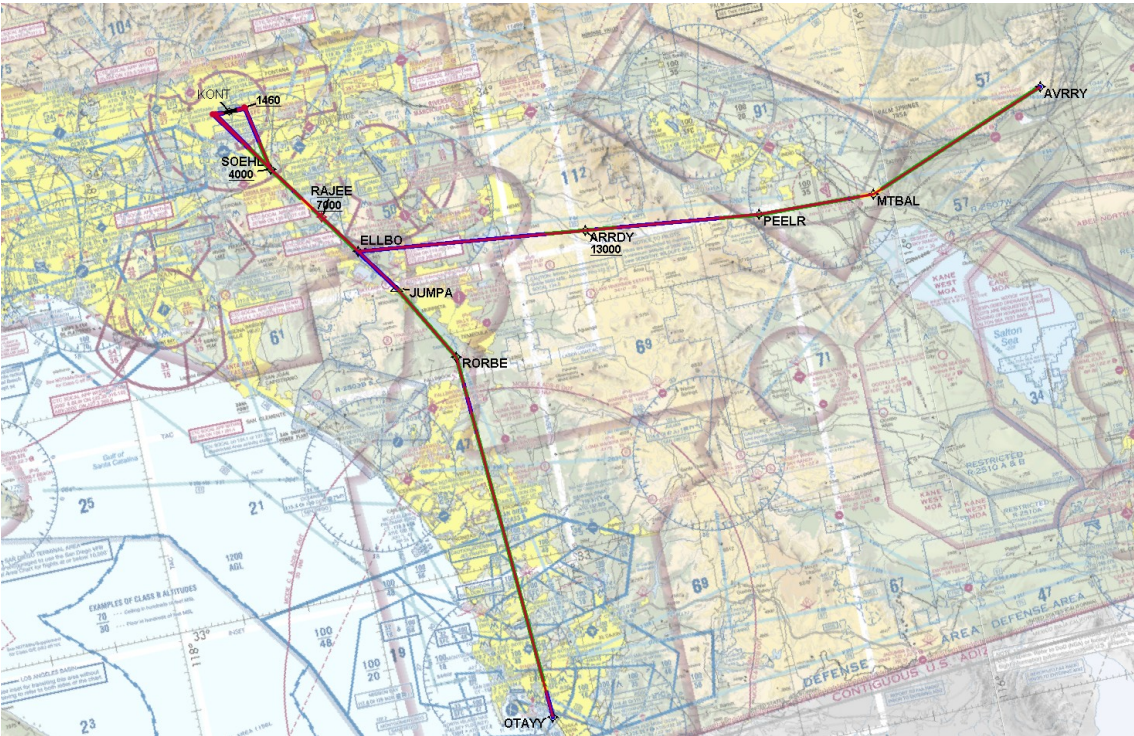
DME DME Assessment Results for RAJEE4 path KONT:RW08R:DER\_SOEHL

Graphic Depiction 1



DME DME Assessment Results for RAJEE4 path KONT:RW08R:DER\_SOEHL

Graphic Depiction 2



## DME DME Assessment Results for RAJEE4 path KONT:RW26L:DER\_SOEHL

### Results Summary

Flyability:	Completed
DME/DME:	Completed - No Critical DMEs
Name:	Theodore CTR Roller
Project File:	C:\Users\Theodore CTR Roller\Desktop\SoCal\ONT\32600 RAJEE SID\SubPak\20230612 32600 RAJEE SID.tgs
Output File:	C:\Users\Theodore CTR Roller\Desktop\SoCal\ONT\32600 RAJEE SID\SubPak\20230613\KONT [IFPA] RAJEE4 20230614_1341 MDT\KONT-RW26L- DER_SOEHL\KONT RAJEE4 SID RW26L SOEHL 20230614_1341 MDT.pdf
Procedure Name:	RAJEE4
Software: DmeDmePlugin:	7.1.0
Date/Time:	06/14/2023 13:41 MDT
Databases:	DTED Level 0 Max

### Failures

No Failures

### Warnings

No Warnings

### Informational

No Informational

### Notes For Flight Check

None

### Flight Plan

Name	Type	Lat/Lon	Altitude (ft)	VNAV Mode	Ground Speed (kts)	Turn Type	Leg Type
KONT:RW26L:DER	WP	N34° 03' 17.86", W117° 36' 58.42"	936	VNAV	130	FLY_OVER	TF
SOEHL	WP	N33° 55' 05.52", W117° 31' 47.58"	4000	VNAV	200	FLY_BY	TF
Climb Gradient: 500.0 ft/NM up to 1460.0 ft MSL 200.0 ft/NM							

### Flyability

Flight Type:	SID
Selected Airport:	KONT [IFPA]
Climb Gradient:	500.0 ft/NM up to 1460.0 ft MSL 200.0 ft/NM
Speeds:	130 at the Runway DER
	145 at the end of the VA or VI leg
	200 Ground Speed to 11000 FT
	240 Ground Speed to 18000 FT
	260 Ground Speed to 24000 FT
	340 Ground Speed above 24000 FT
Descent During a Turn:	Allowed
VNAV Mode:	Flight Plan

# DME DME Assessment Results for RAJEE4 path KONT:RW26L:DER\_SOEHL

DME/DME	
RNP:	RNP 2
Flight Mode:	Manual
Line of Sight (DTED Level 0 Max):	Evaluated
Inertial Drift:	Enabled
Initial Drift:	0.558 NM
INS Drift Rate:	8.0 NM/Hour
Range Mode:	OSV
RNP Edges:	Evaluated
Min DME Range:	3.0 NM
DME Types:	DME, VOR-DME, VORTAC
DME Include Angles:	30 to 150
Critical DMEs:	Allowed
DoD Facilities:	Not included
Foreign Facilities:	Not included
High DMEs:	Included
Low DMEs:	Included
Terminal DMEs:	Included
Flight Check DMEs:	Not selected
Higher Altitudes:	Not Evaluated
Near Maximum Altitude:	Not Evaluated
Automatic ESVs:	Enabled
Disabled DMEs:	None

DME/DME (Continued)										
DMEs Used										
#	Name	Lat/Lon	MAGVAR	Range	Type	Source	Critical	Status	Time	Distance
1	POM	N34° 04' 42.20", W117° 47' 13.47"	15.0 E	40	L	IFPA	NO	Enabled	31.4 %	34.2 %
2	SLI	N33° 46' 59.88", W118° 03' 17.13"	15.0 E	40	L	IFPA	NO	Enabled	31.4 %	34.2 %
3	PDZ	N33° 55' 06.01", W117° 31' 47.99"	15.0 E	130	H	IFPA	NO	Enabled	2.7 %	2.6 %

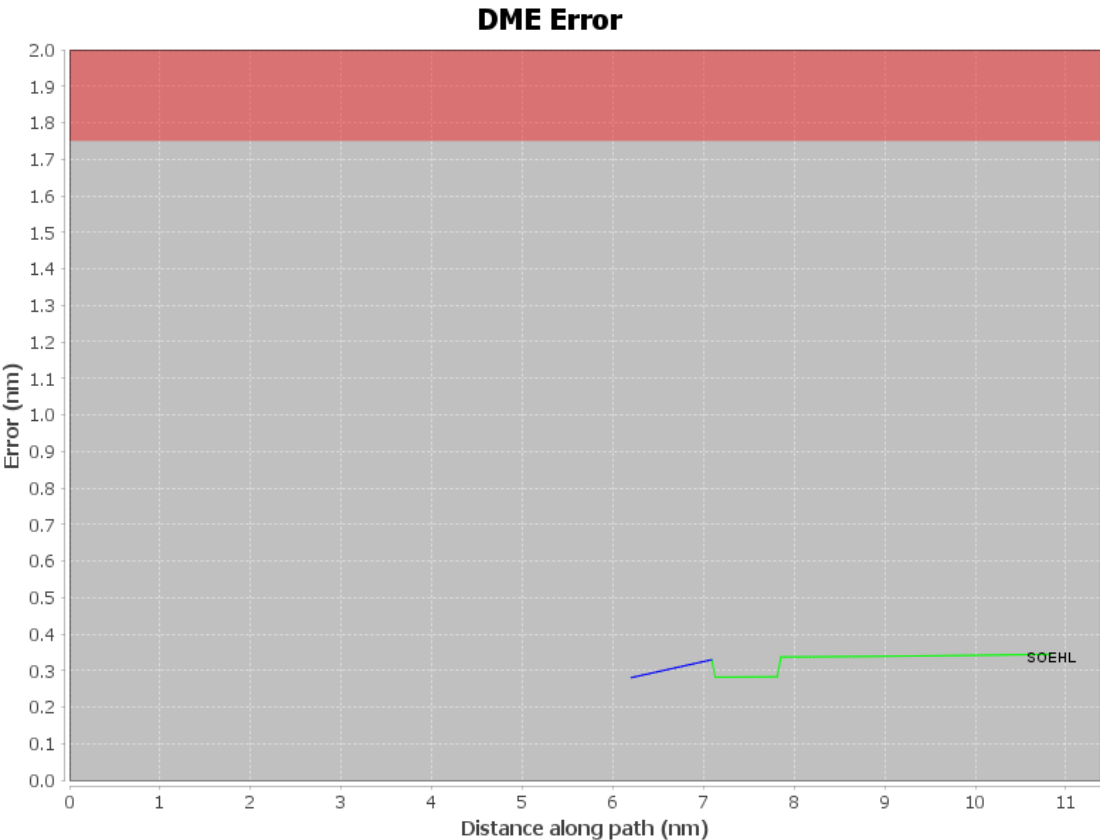
Flight Check DME Selection						
Distance [NM]	Selected DMEs					Alternate
0.0						
6.2	PDZ	SLI	POM			
6.2						
7.1	PDZ	SLI	POM			
7.5	POM	SLI				

Inertial Drift Segments			
#	Start Location	End Location	Length [NM]
1	N34° 03' 17.86", W117° 37' 00.94"	N33° 58' 58.54", W117° 34' 50.35"	6.1653
2	N33° 58' 56.52", W117° 34' 48.76"	N33° 58' 11.94", W117° 34' 13.77"	0.886

Available DMEs by Waypoints			
Waypoint Before	Waypoint After	DME List	Suggested DMEs
KONT:RW26L:DER	SOEHL	SLI, PDZ, POM	

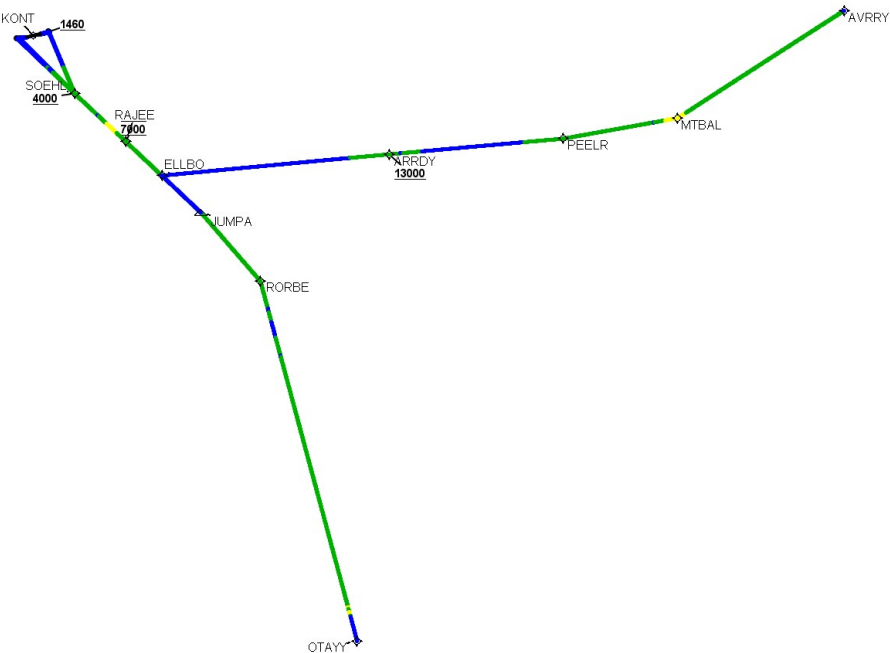
# DME DME Assessment Results for RAJEE4 path KONT:RW26L:DER\_SOEHL

User Data Files								
#	File Name							
1	New Analysis.udt							
User DMEs								
#	Name	Lat/Lon	MAGVAR	Range	Elevation [ft]	Frequency	Replaces	Status
1	LAX FAA 694116-37 LAX [IFPA]	N33° 55' 59.34", W118° 25' 55.25"	15.0 E	130	188.4	113.6	LAX FAA 694116-37	
ESV:		Bearing [True]: 81.0° to 109.0° Bearing [Mag]: 66.0° to 94.0°				Arc Distance: Out to 55.0 NM Altitude: 3200.0 to 16000.0 ft		
2	SXC FAA 190728-4 SXC [IFPA]	N33° 22' 30.20", W118° 25' 11.68"	15.0 E	40	2090	111.4	SXC FAA 190728-4	
ESV:		Bearing [True]: 54.0° to 70.0° Bearing [Mag]: 39.0° to 55.0°				Arc Distance: Out to 61.0 NM Altitude: 5000.0 to 22000.0 ft		
3	POM FAA 694085 - 016 POM [IFPA]	N34° 04' 42.20", W117° 47' 13.47"	15.0 E	40	1265.5	110.4	POM FAA 694085 - 016	
ESV:		Bearing [True]: 111.0° to 120.0° Bearing [Mag]: 96.0° to 105.0°				Arc Distance: Out to 62.0 NM Altitude: 8000.0 to 19300.0 ft		
4	SXC FAA 190728 - 025 SXC [IFPA]	N33° 22' 30.20", W118° 25' 11.68"	15.0 E	40	2090	111.4	SXC FAA 190728 - 025	
ESV:		Bearing [True]: 76.0° to 82.0° Bearing [Mag]: 61.0° to 67.0°				Arc Distance: Out to 89.0 NM Altitude: 8000.0 to 20100.0 ft		
5	POM FAA 694085-11 POM [IFPA]	N34° 04' 42.20", W117° 47' 13.47"	15.0 E	40	1265.5	110.4	POM FAA 694085-11	
ESV:		Bearing [True]: 94.0° to 136.0° Bearing [Mag]: 79.0° to 121.0°				Arc Distance: Out to 59.0 NM Altitude: 6000.0 to 20000.0 ft		



DME DME Assessment Results for RAJEE4 path KONT:RW26L:DER\_SOEHL

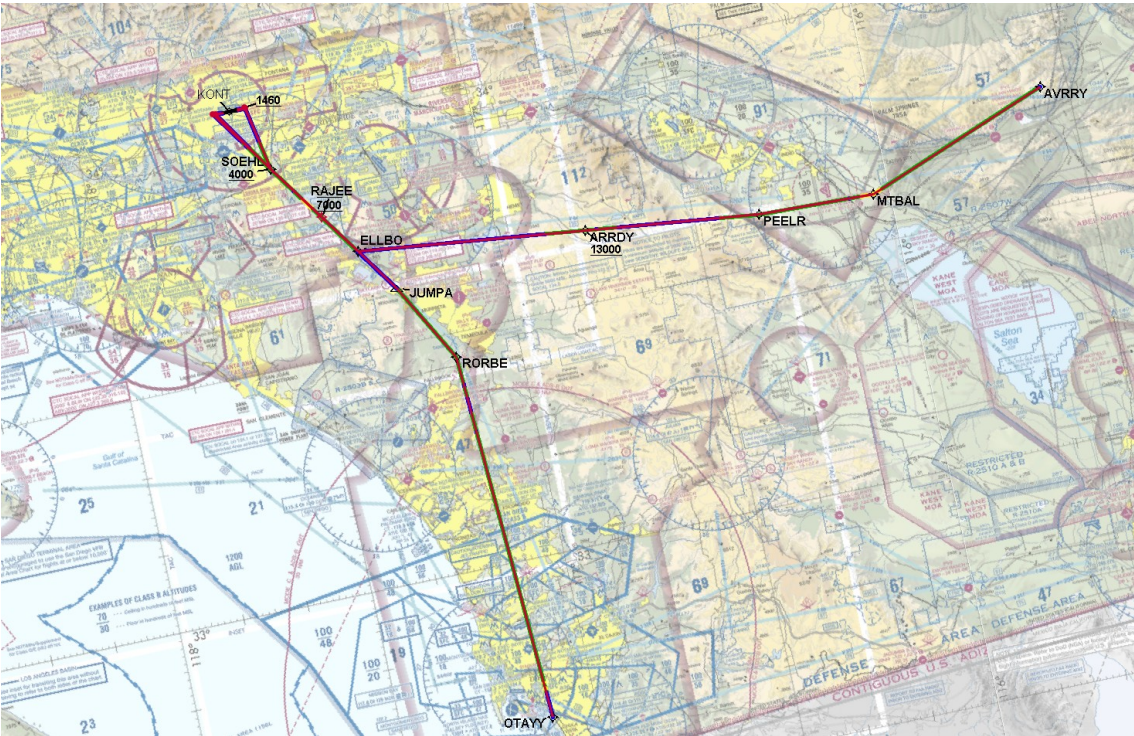
Graphic Depiction 1





DME DME Assessment Results for RAJEE4 path KONT:RW26L:DER\_SOEHL

Graphic Depiction 2



## DME DME Assessment Results for RAJEE4 path KONT:RW26R:DER\_SOEHL

### Results Summary

Flyability:	Completed
DME/DME:	Completed - No Critical DMEs
Name:	Theodore CTR Roller
Project File:	C:\Users\Theodore CTR Roller\Desktop\SoCal\ONT\32600 RAJEE SID\SubPak\20230612 32600 RAJEE SID.tgs
Output File:	C:\Users\Theodore CTR Roller\Desktop\SoCal\ONT\32600 RAJEE SID\SubPak\20230613\KONT [IFPA] RAJEE4 20230614_1341 MDT\KONT-RW26R-DER_SOEHL\KONT RAJEE4 SID RW26R SOEHL 20230614_1341 MDT.pdf
Procedure Name:	RAJEE4
Software: DmeDmePlugin:	7.1.0
Date/Time:	06/14/2023 13:41 MDT
Databases:	DTED Level 0 Max

### Failures

No Failures

### Warnings

No Warnings

### Informational

No Informational

### Notes For Flight Check

None

### Flight Plan

Name	Type	Lat/Lon	Altitude (ft)	VNAV Mode	Ground Speed (kts)	Turn Type	Leg Type
KONT:RW26R:DER	WP	N34° 03' 24.77", W117° 37' 22.16"	944	VNAV	130	FLY_OVER	TF
SOEHL	WP	N33° 55' 05.52", W117° 31' 47.58"	4000	VNAV	200	FLY_BY	TF
Climb Gradient: 500.0 ft/NM up to 1460.0 ft MSL 200.0 ft/NM							

### Flyability

Flight Type:	SID
Selected Airport:	KONT [IFPA]
Climb Gradient:	500.0 ft/NM up to 1460.0 ft MSL 200.0 ft/NM
Speeds:	130 at the Runway DER
	145 at the end of the VA or VI leg
	200 Ground Speed to 11000 FT
	240 Ground Speed to 18000 FT
	260 Ground Speed to 24000 FT
	340 Ground Speed above 24000 FT
Descent During a Turn:	Allowed
VNAV Mode:	Flight Plan

# DME DME Assessment Results for RAJEE4 path KONT:RW26R:DER\_SOEHL

DME/DME	
RNP:	RNP 2
Flight Mode:	Manual
Line of Sight (DTED Level 0 Max):	Evaluated
Inertial Drift:	Enabled
Initial Drift:	0.558 NM
INS Drift Rate:	8.0 NM/Hour
Range Mode:	OSV
RNP Edges:	Evaluated
Min DME Range:	3.0 NM
DME Types:	DME, VOR-DME, VORTAC
DME Include Angles:	30 to 150
Critical DMEs:	Allowed
DoD Facilities:	Not included
Foreign Facilities:	Not included
High DMEs:	Included
Low DMEs:	Included
Terminal DMEs:	Included
Flight Check DMEs:	Not selected
Higher Altitudes:	Not Evaluated
Near Maximum Altitude:	Not Evaluated
Automatic ESVs:	Enabled
Disabled DMEs:	None

DME/DME (Continued)										
DMEs Used										
#	Name	Lat/Lon	MAGVAR	Range	Type	Source	Critical	Status	Time	Distance
1	POM	N34° 04' 42.20", W117° 47' 13.47"	15.0 E	40	L	IFPA	NO	Enabled	34.3 %	37 %
2	SLI	N33° 46' 59.88", W118° 03' 17.13"	15.0 E	40	L	IFPA	NO	Enabled	34.3 %	37 %
3	PDZ	N33° 55' 06.01", W117° 31' 47.99"	15.0 E	130	H	IFPA	NO	Enabled	3.7 %	3.6 %

Flight Check DME Selection						
Distance [NM]	Selected DMEs					Alternate
0.0						
6.3	POM	SLI				
6.4	PDZ	SLI	POM			
6.6						
7.2	PDZ	SLI	POM			
7.5	POM	SLI				

Inertial Drift Segments			
#	Start Location	End Location	Length [NM]
1	N34° 03' 24.76", W117° 37' 24.73"	N33° 59' 03.19", W117° 35' 02.15"	6.2629
2	N33° 58' 49.21", W117° 34' 50.69"	N33° 58' 17.26", W117° 34' 24.52"	0.6436

Available DMEs by Waypoints			
Waypoint Before	Waypoint After	DME List	Suggested DMEs
KONT:RW26R:DER	SOEHL	SLI, PDZ, POM	

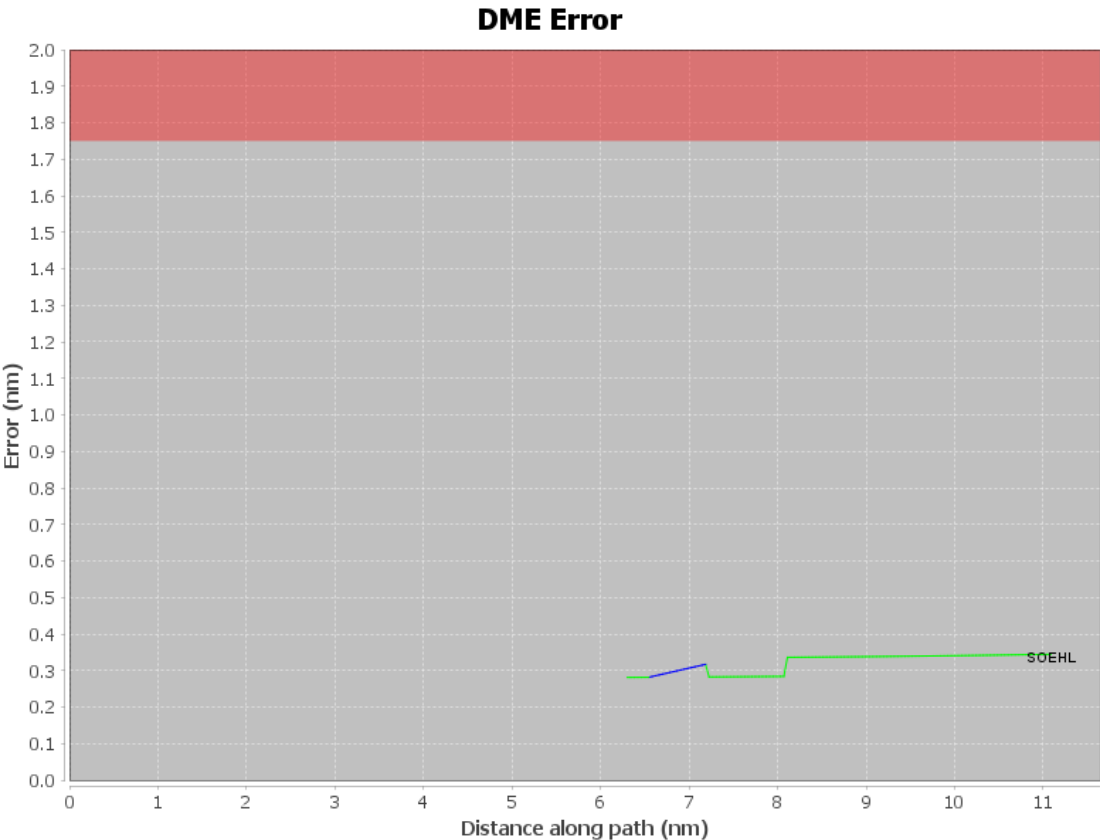
# DME DME Assessment Results for RAJEE4 path KONT:RW26R:DER\_SOEHL

## User Data Files

#	File Name
1	New Analysis.udt

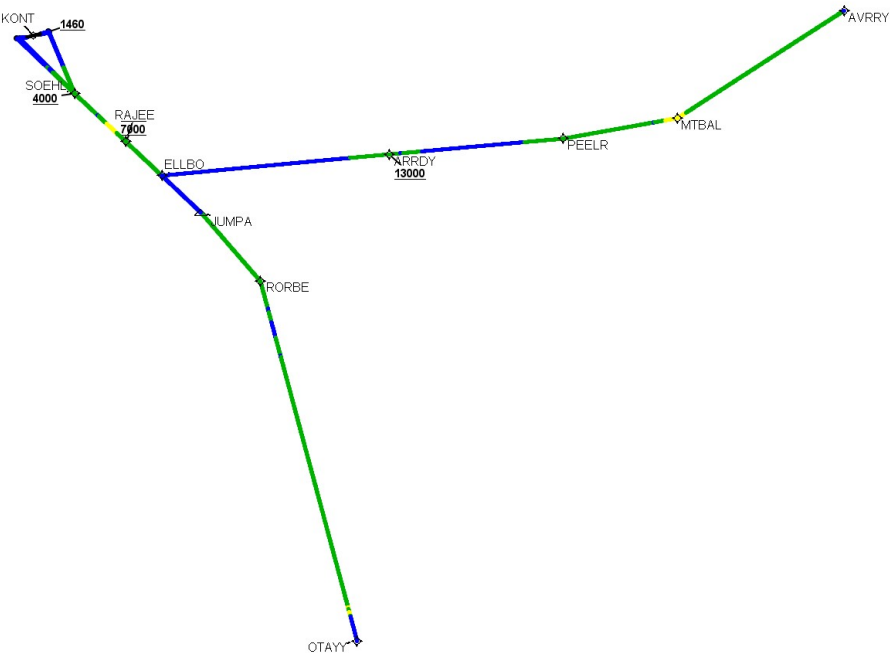
## User DMEs

#	Name	Lat/Lon	MAGVAR	Range	Elevation [ft]	Frequency	Replaces	Status
1	LAX FAA 694116-37 LAX [IFPA]	N33° 55' 59.34", W118° 25' 55.25"	15.0 E	130	188.4	113.6	LAX FAA 694116-37	
ESV:		Bearing [True]: 81.0° to 109.0° Bearing [Mag]: 66.0° to 94.0°				Arc Distance: Out to 55.0 NM Altitude: 3200.0 to 16000.0 ft		
2	SXC FAA 190728-4 SXC [IFPA]	N33° 22' 30.20", W118° 25' 11.68"	15.0 E	40	2090	111.4	SXC FAA 190728-4	
ESV:		Bearing [True]: 54.0° to 70.0° Bearing [Mag]: 39.0° to 55.0°				Arc Distance: Out to 61.0 NM Altitude: 5000.0 to 22000.0 ft		
3	POM FAA 694085 - 016 POM [IFPA]	N34° 04' 42.20", W117° 47' 13.47"	15.0 E	40	1265.5	110.4	POM FAA 694085 - 016	
ESV:		Bearing [True]: 111.0° to 120.0° Bearing [Mag]: 96.0° to 105.0°				Arc Distance: Out to 62.0 NM Altitude: 8000.0 to 19300.0 ft		
4	SXC FAA 190728 - 025 SXC [IFPA]	N33° 22' 30.20", W118° 25' 11.68"	15.0 E	40	2090	111.4	SXC FAA 190728 - 025	
ESV:		Bearing [True]: 76.0° to 82.0° Bearing [Mag]: 61.0° to 67.0°				Arc Distance: Out to 89.0 NM Altitude: 8000.0 to 20100.0 ft		
5	POM FAA 694085-11 POM [IFPA]	N34° 04' 42.20", W117° 47' 13.47"	15.0 E	40	1265.5	110.4	POM FAA 694085-11	
ESV:		Bearing [True]: 94.0° to 136.0° Bearing [Mag]: 79.0° to 121.0°				Arc Distance: Out to 59.0 NM Altitude: 6000.0 to 20000.0 ft		



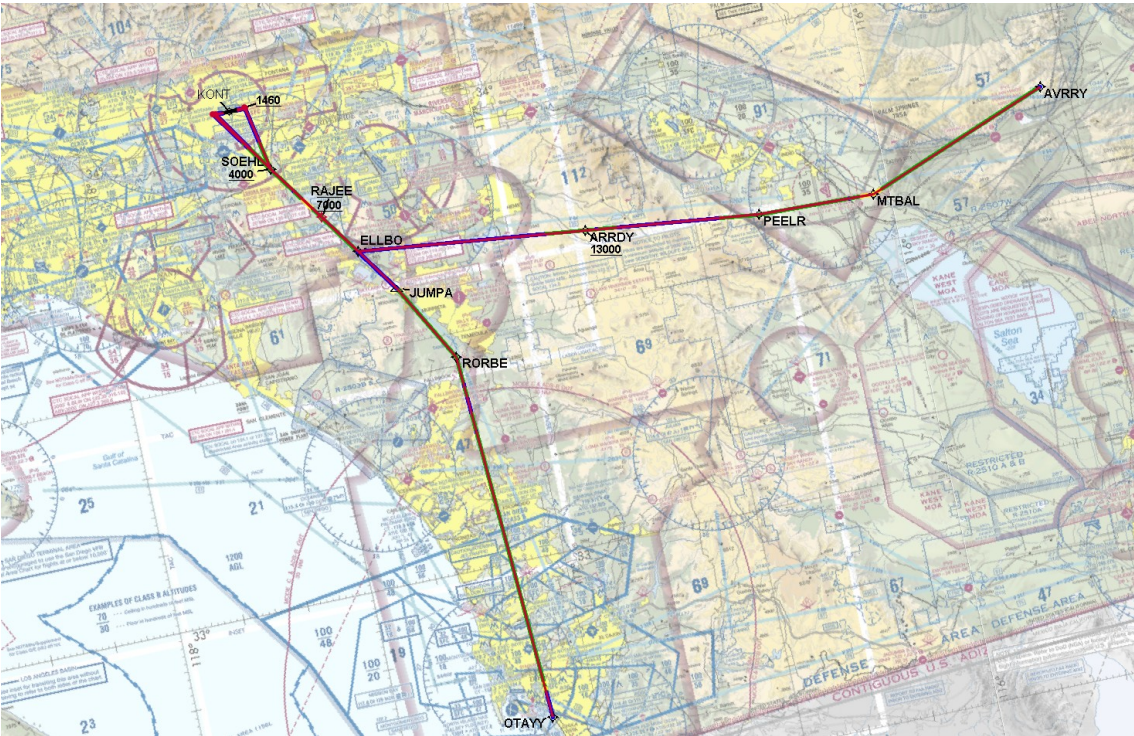
DME DME Assessment Results for RAJEE4 path KONT:RW26R:DER\_SOEHL

Graphic Depiction 1



DME DME Assessment Results for RAJEE4 path KONT:RW26R:DER\_SOEHL

Graphic Depiction 2



**DME ESVs**

#	Name	Lat/Lon	MAGVAR	Range	Elevation [ft]	Frequency	Replaces	Status
1	LAX FAA 694116-37 LAX [IFPA]	N33° 55' 59.34", W118° 25' 55.25"	15.0 E	130	188.4	113.6	LAX FAA 694116-37	
ESV:		Bearing [True]: 81.0° to 109.0° Bearing [Mag]: 66.0° to 94.0°				Arc Distance: Out to 55.0 NM Altitude: 3200.0 to 16000.0 ft		
2	POM FAA 694085 - 016 POM [IFPA]	N34° 04' 42.20", W117° 47' 13.47"	15.0 E	40	1265.5	110.4	POM FAA 694085 - 016	
Restriction:		Bearing [True]: 315.0° to 60.0° Bearing [Mag]: 300.0° to 45.0°				Distance: Beyond 20.0 NM Altitude: Below 99999.0 ft		
ESV:		Bearing [True]: 111.0° to 120.0° Bearing [Mag]: 96.0° to 105.0°				Arc Distance: Out to 62.0 NM Altitude: 8000.0 to 19300.0 ft		
3	POM FAA 694085-11 POM [IFPA]	N34° 04' 42.20", W117° 47' 13.47"	15.0 E	40	1265.5	110.4	POM FAA 694085-11	
Restriction:		Bearing [True]: 315.0° to 60.0° Bearing [Mag]: 300.0° to 45.0°				Distance: Beyond 20.0 NM Altitude: Below 99999.0 ft		
ESV:		Bearing [True]: 94.0° to 136.0° Bearing [Mag]: 79.0° to 121.0°				Arc Distance: Out to 59.0 NM Altitude: 6000.0 to 20000.0 ft		
4	SXC FAA 190728 - 025 SXC [IFPA]	N33° 22' 30.20", W118° 25' 11.68"	15.0 E	40	2090	111.4	SXC FAA 190728 - 025	
ESV:		Bearing [True]: 76.0° to 82.0° Bearing [Mag]: 61.0° to 67.0°				Arc Distance: Out to 89.0 NM Altitude: 8000.0 to 20100.0 ft		
5	SXC FAA 190728-4 SXC [IFPA]	N33° 22' 30.20", W118° 25' 11.68"	15.0 E	40	2090	111.4	SXC FAA 190728-4	
ESV:		Bearing [True]: 54.0° to 70.0° Bearing [Mag]: 39.0° to 55.0°				Arc Distance: Out to 61.0 NM Altitude: 5000.0 to 22000.0 ft		