

Flight Procedures Cover Page	Task Action: FLIGHT CHECK	Task Type: IAP	Estimated Chart Date: 09/10/2020	APWS Task ID: 4BCB341E3D6946F6A02AE255B78664D6	APWS Project ID: BBA2721734144DFA81D7BD791F625887
Procedure: VOR/DME RWY 36 AMDT 1B		Enroute: NO	Specialist: Eubanks, Katherine		Agreement Number:
Airport ID: KOPL	Airport Name: ST LANDRY PARISH-AHART FIELD		Airport City: OPELOUSAS		State: LA
Facility ID: LFT	Facility Type: VOR/DME	Flight Inspection Remark Type: New FC Slot			
<p>Procedure Comments:</p> <p>PENDING AIRPORT AND RUNWAY DATA USED FOR KOPL.</p> <p>PROCESSED IAW AIRCRAFT OPERATIONS GROUP (AJF-1000) MEMO, DATED JUNE 4, 2020, SUBJECT: FLIGHT INSPECTION OF NEW CONTROLLING OBSTACLES.</p> <p>CLEARs NOTAM !FDC 9/6735</p> <p>CONTACT WARDELL HENNING 405-954-9954.</p>					



OLD

OPELOUSAS, LOUISIANA

AL-5775 (FAA)

19283

VORTAC LFT	APP CRS	Rwy Idg	5210
109.8	343°	TDZE	74
Chan 35		Apt Elev	75

VOR/DME RWY 36

ST LANDRY PARISH-AHART FIELD (OPL)

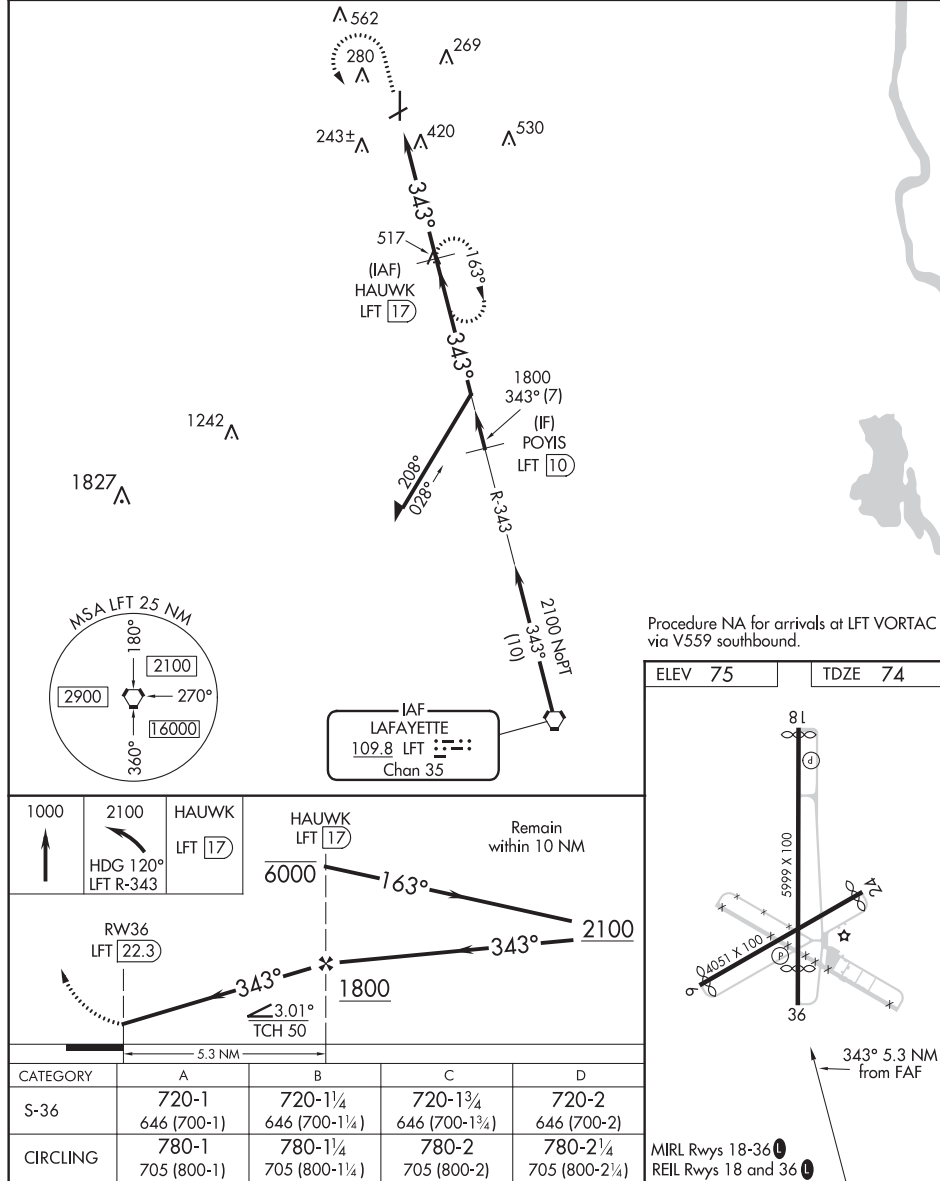
▲ If local altimeter setting not received, use Lafayette Rgnl altimeter setting and increase all MDAs 60 feet. Rwy 36 helicopter visibility reduction below ¾ SM NA. Circling Rwy 6, 24 NA at night.

MISSED APPROACH: Climb to 1000 then climbing left turn to 2100 via heading 120° and LFT R-343 to HAUWK 17 DME and hold.

AWOS-3PT	LAFAYETTE APP CON ★	UNICOM
118.775	128.7 268.7	123.0 (CTAF) 0

SC-4, 26 MAR 2020 to 23 APR 2020

SC-4, 26 MAR 2020 to 23 APR 2020



OPELOUSAS, LOUISIANA
Amdt 1A 31JAN19

30°34'N-92°06'W

ST LANDRY PARISH-AHART FIELD (OPL)
VOR/DME RWY 36

