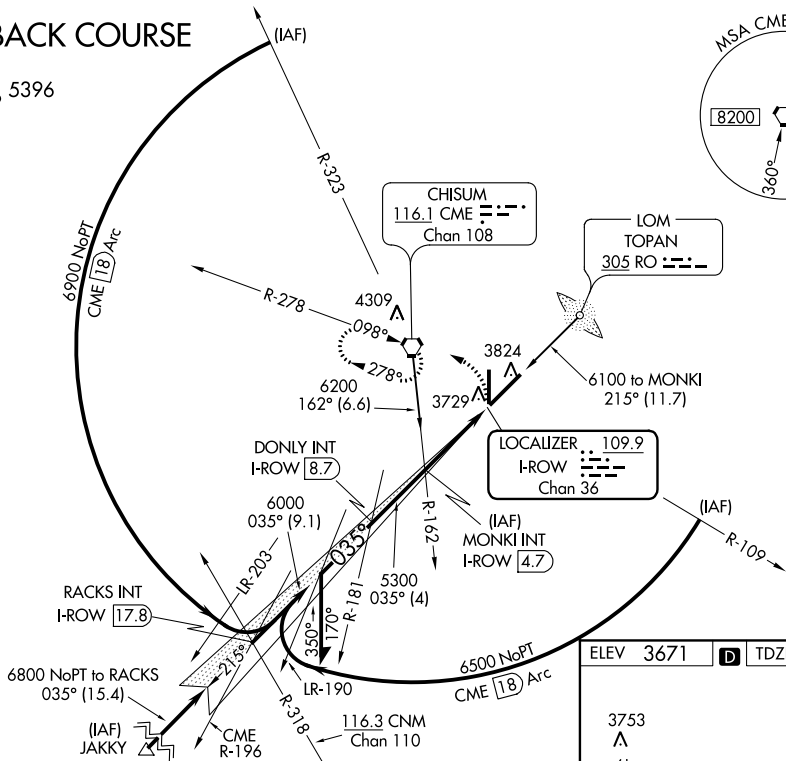
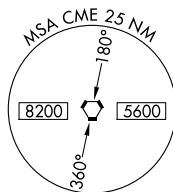


Flight Procedures Cover Page	Task Action: Amendment	Task Type: IAP	Estimated Chart Date: 05/21/2020	APWS Task ID: 4AE018A4B4E346C9ADCDEAB1E1F5DF66	APWS Request ID: 9E5BF943F5BC42DC87E38C12EAA3E6D4
Procedure: LOC BC RWY 3 AMDT 9D		Enroute: NO	Specialist: Carlson, Kelly		Agreement Number:
Airport ID: KROW	Airport Name: ROSWELL AIR CENTER		Airport City: ROSWELL		State: NM
Facility ID: ROW	Facility Type: ILS	Flight Inspection Remark Type:			
<div>Procedure Comments: P-NOTAM.</div> <div>PROCESSED IAW AIRCRAFT OPERATIONS GROUP (AJW-33) MEMO, OCT 3, 2018: SUBJECT: FLIGHT INSPECTION REVIEW NOT REQUIRED.</div> <div>CONTACT WARDELL HENNING 405-954-9954</div> <div>0/2896</div> <div><div>Digitally signed by WARDELL HENNING Apr 02, 2020</div><div>QUALITY 9 CHECKED</div></div>					

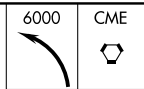
LOC BC RWY 3
ROSWELL INTL AIR CENTER (ROW)

MISSED APPROACH: Climbing left turn to 6000 direct CME VORTAC and hold.

BACK COURSE

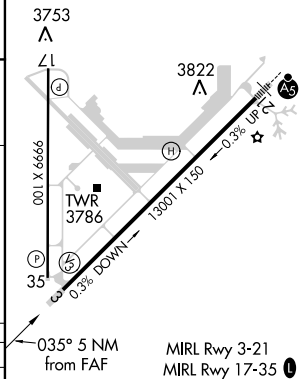


Remain
within 10 NM



Use I-ROW DME when on localizer course.

Disregard glide slope indications.



ROSWELL, NEW MEXICO

Amdt 9C 13JAN11

ROSWELL INTL AIR CENTER (ROW)

LOC BC RWY 3

33°18'N-104°32'W

SW-1, 10 OCT 2019 to 07 NOV 2019