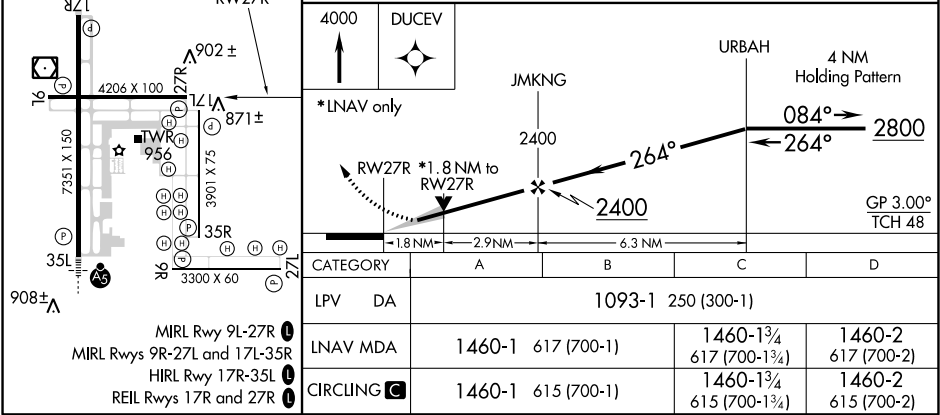
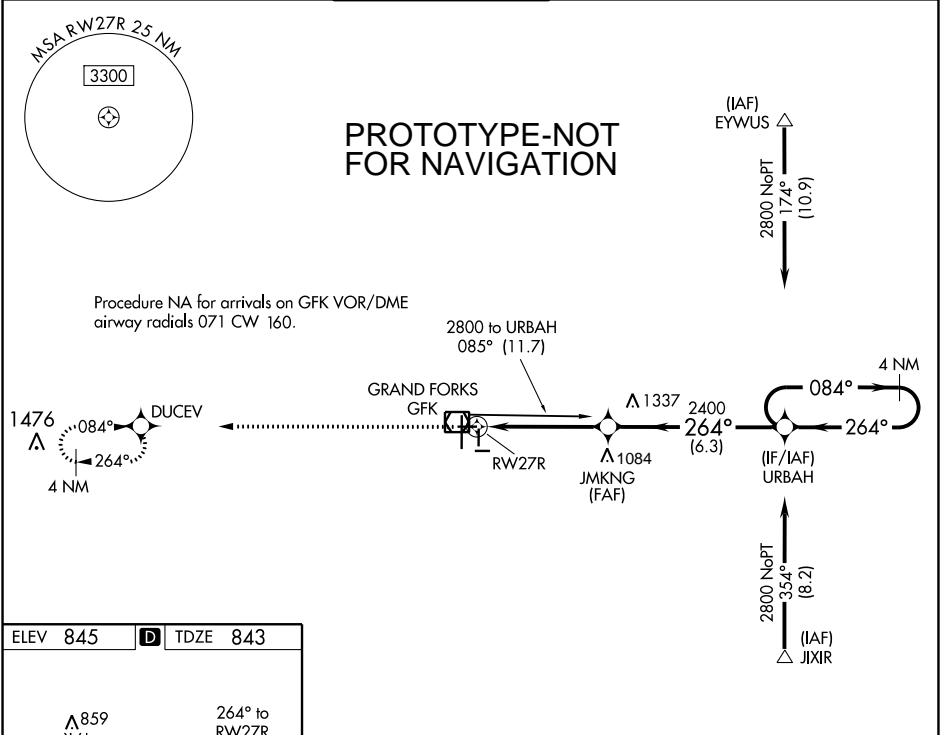


Flight Procedure Tracking Form		Action: FLIGHT CHECK	Task Type: IAP	Date Open: 09/27/2019	Task #: 2019092730451401005	Request #: 20190927304514
Procedure: RNAV (GPS) RWY 27R AMDT 2A			Airport ID: KGFK	Airport: GRAND FORKS INTL		Reimbursable #: NO
City: GRAND FORKS	ST: ND	GPS #:	Estimated Chart Date: 03/26/2020		FICO #:	
Fac ID: N/A		Fac. Type:			Specialist: RALPH DUMAR	
Procedure Review						
	Rec'd	Rel'd	Full Name		Comments	
Lead:	09/27/2019					
QA:			J ZEDER 12/18/2019 ¹⁶			
Liaison:						
Procedure Comments:			Remark Type: INFORMATION			
<p>ENROUTE-NON</p> <p>ABBREVIATED AMENDMENT</p> <p>REMARKS: ADDED NEW CIRCLING AND CIRCLING ICON, ADDED VDP, NEW LPV FINAL OBSTACLE, MISSED LVL SFC OBSTACLE, FAS DATA UPDATED.</p> <p>CONTACT JOHN BORDY 405-954-0980.</p>						

WAAS CH 78104 W27A	APP CRS 264°	Rwy Idg TDZE 843 Apt Elev 845	RNAV (GPS) RWY 27R GRAND FORKS INTL (GFK)		
RNP APCH. ⚠ WHEN LOCAL ALTIMETER SETTING NOT RECEIVED, USE CROOKSTON ALTIMETER SETTING AND INCREASE ALL DA 62 FEET AND ALL MDA 80 FEET. INCREASE LNAV AND CIRCLING CAT C AND D VISIBILITY 1/4 SM. VDP NA WHEN USING CROOKSTON ALTIMETER SETTING.			MISSED APPROACH: Climb to 4000 direct DUCEV and hold, continue climb-in-hold to 4000.		
ATIS 119.4	GRAND FORKS APP CON 118.1 318.1	GRAND FORKS TOWER★ 118.4 (CTAF) 0 350.35	GND CON 124.575	CLNC DEL 135.725	UNICOM 122.95



WAAS

CH 78104

W27A

APP CRS

264°

Rwy Idg

4206

TDZE

843

Apt Elev

845

Old

RNAV (GPS) RWY 27R

GRAND FORKS INTL (GFK)

▼

DME/DME RNP-0.3 NA. Visibility reduction by helicopters NA. When local altimeter setting not received, use Crookston altimeter setting and increase all DA 62 feet and all MDA 80 feet. Increase LNAV and Circling Cat C and D visibility ¼ mile.

MISSED APPROACH:

Climb to 4000 direct DUCEV and hold, continue climb-in-hold to 4000.

ATIS 119.4	GRAND FORKS APP CON 118.1 318.1	GRAND FORKS TOWER★ 118.4(CTAF) 350.35	GND CON 124.575	CLNC DEL 135.725	UNICOM 122.95
---------------	------------------------------------	--	--------------------	---------------------	------------------

