

Flight Procedures Cover Page	Task Action: P-NOTAM	Task Type: IAP	Estimated Chart Date: 10/07/2021	APWS Task ID: 4A15EB34870143128533AEE39687B1B6	APWS Project ID: 134B1DCB8D324470BECC82CA11C431BD
Procedure: RNAV (GPS) RWY 13 AMDT 0C		Enroute: NO	Specialist: Miller, Ralph		Agreement Number:
Airport ID: KETB			Airport City: WEST BEND		State: WI
Facility ID:	Facility Type:	Flight Inspection Remark Type:			
<p>Procedure Comments:</p> <p>P-NOTAM.</p> <p>ORDER 8260.3, CHAPTER 2, NEW CIRCLING CRITERIA APPLIED</p> <p>ACTIVE DATA USED.</p> <p>CONTACT JASON KRETSCHMER, AJV-A421, 405-954-5077.</p> <div style="text-align: center; margin-top: 20px;"> <i>Digitally signed by</i> JASON KRETSCHMER Aug 11, 2021 </div>					

QUALITY
45
CHECKED

QUALITY
38
CHECKED

OLD

WEST BEND, WISCONSIN

AL-5649 (FAA)

19115

APP CRS
127°

Rwy Idg
4494

TDZE
882

Apt Elev
887

RNAV (GPS) RWY 13 WEST BEND MUNI (ETB)

⚠ DME/DME RNP-0.3 NA. When local altimeter setting not received, use Milwaukee/Lawrence J. Timmerman altimeter setting and increase all MDA 80 feet, and increase LNAV Cats C/D and Circling Cat C visibility ½ mile, and Circling Cat D visibility ¼ mile. Night landing: Rwy 6 NA. Helicopter visibility reduction below ¾ SM NA.

MISSED APPROACH:
Climb to 3000 direct COVNI and hold.

AWOS-3
120.0

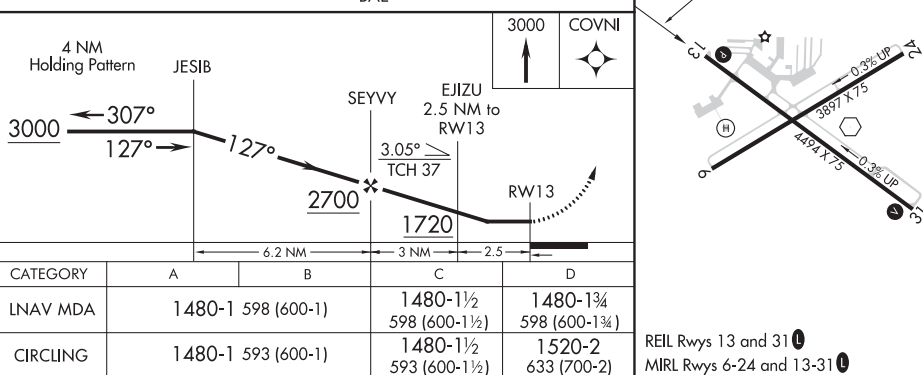
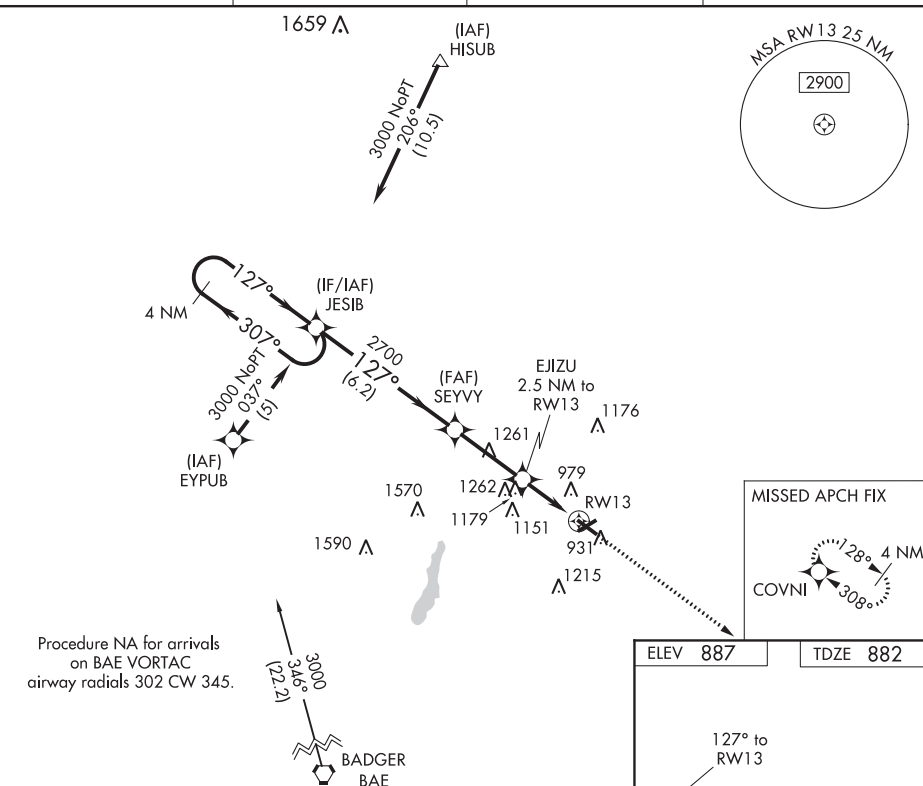
MILWAUKEE APP CON
125.35 307.0

CLNC DEL
124.75

UNICOM
122.8 (CTAF) **0**

EC-3, 16 JUL 2020 to 13 AUG 2020

EC-3, 16 JUL 2020 to 13 AUG 2020



WEST BEND, WISCONSIN
Orig-B 03APR14

43°25'N - 88°08'W

WEST BEND MUNI (ETB) RNAV (GPS) RWY 13

KETB
WEST BEND MUNI
WEST BEND, WI
RNAV (GPS) RWY 13, ORIG-C
NEW CIRCLING AREA 1:100,000

Circling CAT C/D TOWER (1258)
55-001000

Circling CAT A TREE (1109)

Circling CAT B TOWER (1156)
55-000184

