

<b>Flight Procedure Tracking Form</b>		<b>Action:</b> FLIGHT CHECK	<b>Task Type:</b> IAP	<b>Date Open:</b> 05/14/2019	<b>Task #:</b> 2019032010270202003	<b>Request #:</b> 20190320102702
<b>Procedure:</b> RNAV (GPS) RWY 6 AMDT 2			<b>Airport ID:</b> KSTL	<b>Airport:</b> ST LOUIS LAMBERT INTL		<b>Reimbursable #:</b> NO
<b>City:</b> ST LOUIS	<b>ST:</b> MO	<b>GPS #:</b>	<b>Estimated Chart Date:</b> 03/26/2020		<b>FICO #:</b>	
<b>Fac ID:</b> N/A		<b>Fac. Type:</b>			<b>Specialist:</b> KELLIE BARNES	
<b>Procedure Review</b>						
	<b>Rec'd</b>	<b>Rel'd</b>	<b>Full Name</b>		<b>Comments</b>	
<b>Lead:</b>	10/04/2019					
<b>QA:</b>			J ZEDER 12/20/2019 16			
<b>Liaison:</b>						
<b>Procedure Comments:</b>			<b>Remark Type:</b> INFORMATION			
CONTACT ALLAN WILL 954-6103						

ST. LOUIS, MISSOURI

AL-360 (FAA)

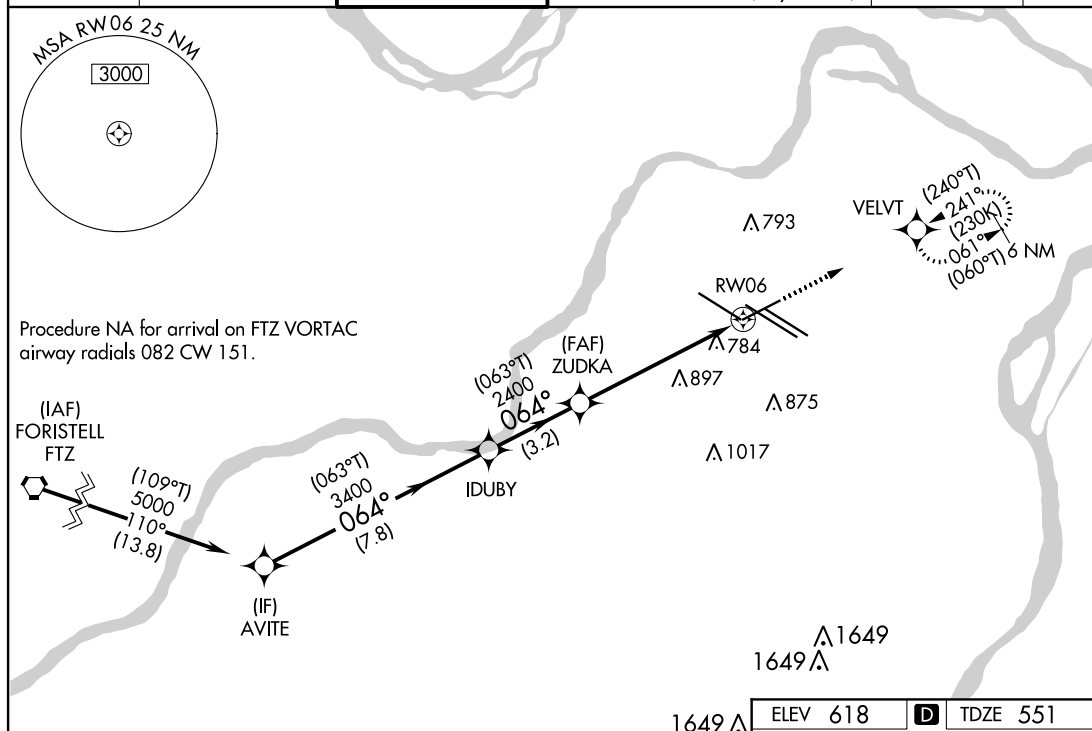
FIG

APP CRS	Rwy Idg	<b>7352</b>
<b>064°</b>	TDZE	<b>551</b>
	Apt Elev	<b>618</b>

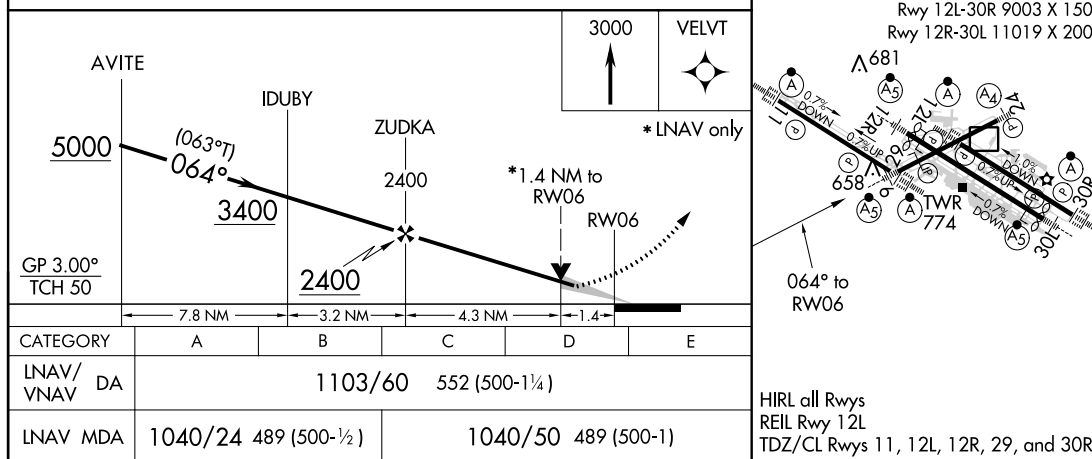
## RNAV (GPS) RWY 6

ST LOUIS LAMBERT INTL (STL)

RNP APCH.		MALSR		MISSED APPROACH: Climb to 3000 direct VELVT and hold, continue climb-in-hold to 3000.	
<p>▼ WAAS VNAV NA. For uncompensated Baro-VNAV systems, LNAV/VNAV NA below -18°C or above 54°C. For inop ALS increase LNAV/VNAV Cat E visibility to 1½ SM and LNAV Cats C, D, E visibility to 1¾ SM.</p>					
D-ATIS	ST. LOUIS APP CON	ST. LOUIS TOWER	GND CON	CLNC DEL	CPDLC
<b>125.025</b> <b>379.925</b>	<b>132.125 360.6</b>	<b>132.475 239.275</b>	<b>121.9 348.6</b> (Inbound) <b>121.65 377.175</b> (Outbound) <b>118.925 227.125</b> (Rwy 11/29)	<b>119.5 363.1</b>	



PROTOTYPE-NOT FOR NAVIGATION



AUTOMATED AL-360 RNAV (GPS) RWY 6

NC-3  
12-19-19  
COMPILER: HD  
REVIEWER:  
DBL CHKR:  
EFF: FIG

ST. LOUIS, MISSOURI  
Amdt 2 FIG

38°45'N-90°22'W

ST LOUIS LAMBERT INTL (STL)  
RNAV (GPS) RWY 6

ST. LOUIS, MISSOURI

AL-360 (FAA)

19171

APP CRS <b>064°</b>	Rwy Idg TDZE Apt Elev	<b>7352</b> <b>551</b> <b>618</b>
------------------------	-----------------------------	---

# OLD

RNAV (GPS) RWY 6  
ST LOUIS LAMBERT INTL (STL)

**T** WAAS VNAV NA. For uncompensated Baro-VNAV systems, LNAV/VNAV NA below -16°C (4°F) or above 54°C (130°F). DME/DME RNP-0.3 NA. For inop ALS increase LNAV/VNAV Cat E visibility to 1½, LNAV Cats A and B visibility to RVR 5000 and LNAV Cats C, D and E visibility to 1¾.

MALSR



**MISSED APPROACH:** Climb to 3000 direct ZUMAY LOM and hold, continue climb-in-hold to 3000.

D-ATIS  
125.025  
379.925

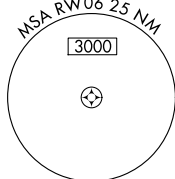
ST. LOUIS APP CON  
**132.125 360.6**

ST. LOUIS TOWER  
**132.475 239.275**

GND CON  
121.9 348.6 (Inbound)  
121.65 377.175 (Outbound)  
118.925 227.125 (Rwy 11/29)

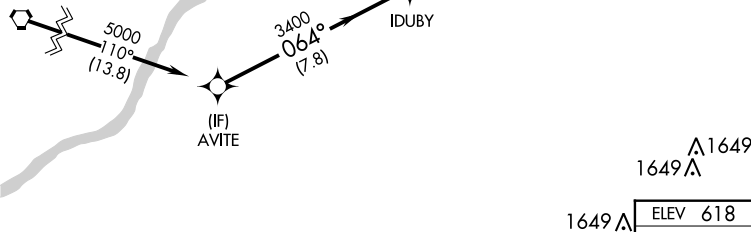
CLNC DEL  
**119.5 363.1**

CPDLC



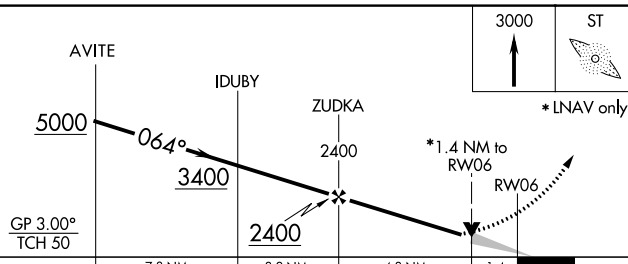
Procedure NA for arrival on FTZ VORTAC  
airway radials 082 CW 150.

(IAF)  
FORISTELL  
FT7

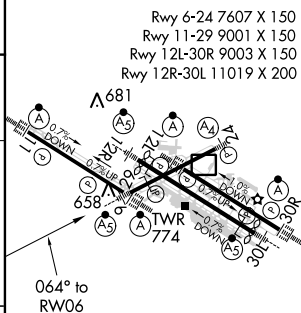


1649 A

ELEV 618	<b>D</b>	TDZE 551
----------	----------	----------



	7.8 NM	3.2 NM	4.3 NM	1.4	
CATEGORY	A	B	C	D	E
INAV/ VNAV DA	1100-1 <sup>3</sup> / <sub>8</sub> 549 (500-1 <sup>3</sup> / <sub>8</sub> )				
INAV MDA	1040/40 489 (500- <sup>3</sup> / <sub>4</sub> )		1040/50 489 (500-1)		



HIRL all Rwys  
REIL Rwy 12L  
TDZ/CL Rwys 11, 12L, 12R, 29, and 30R

ST. LOUIS, MISSOURI  
Amdt 1C 17AUG17

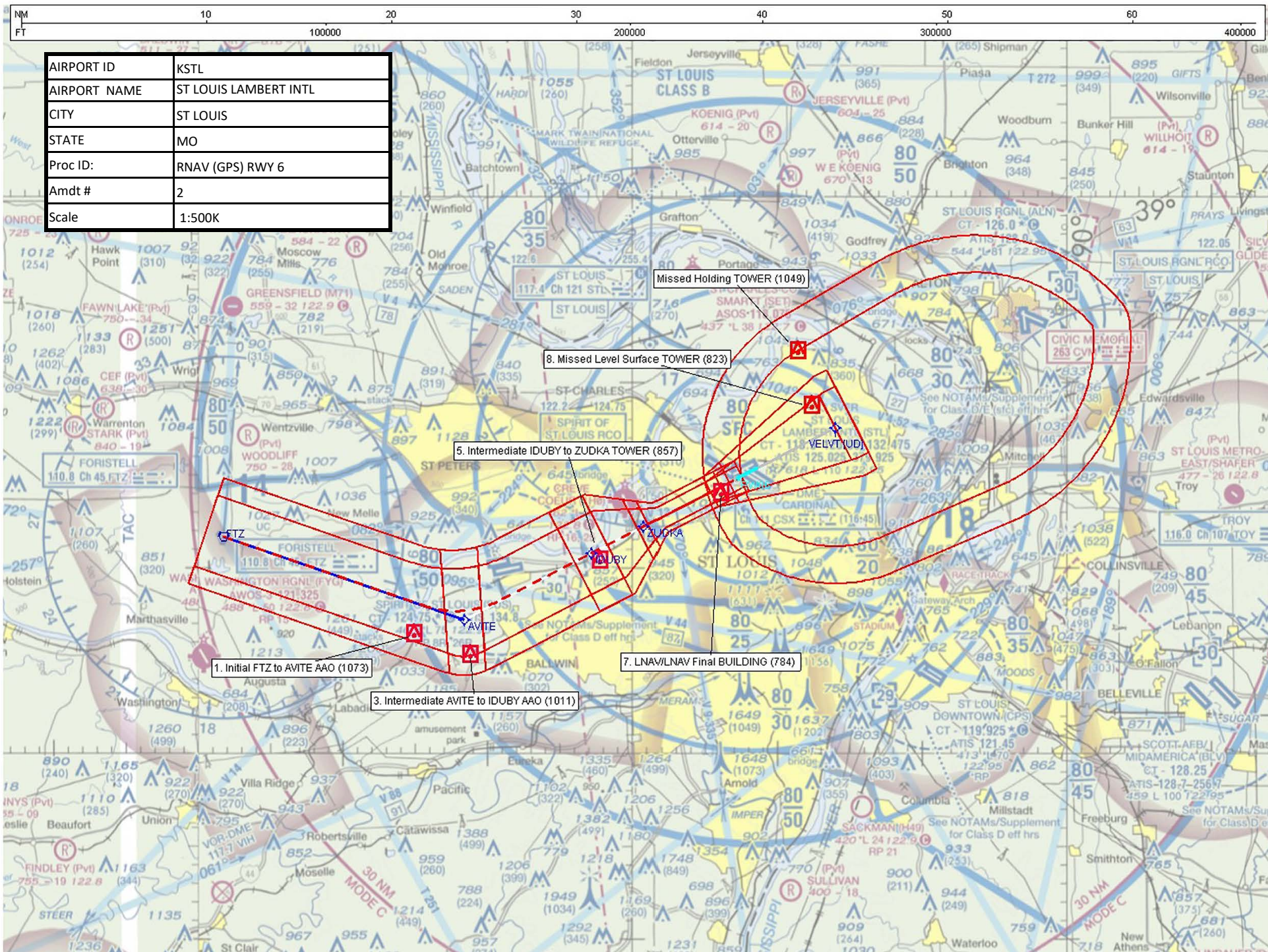
38°45'N-90°22'W

ST LOUIS LAMBERT INTL (STL)  
RNAV (GPS) RWY 6

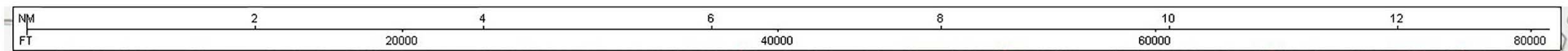
NC-3, 10 OCT 2019 to 07 NOV 2019

NC-3, 10 OCT 2019 to 07 NOV 2019

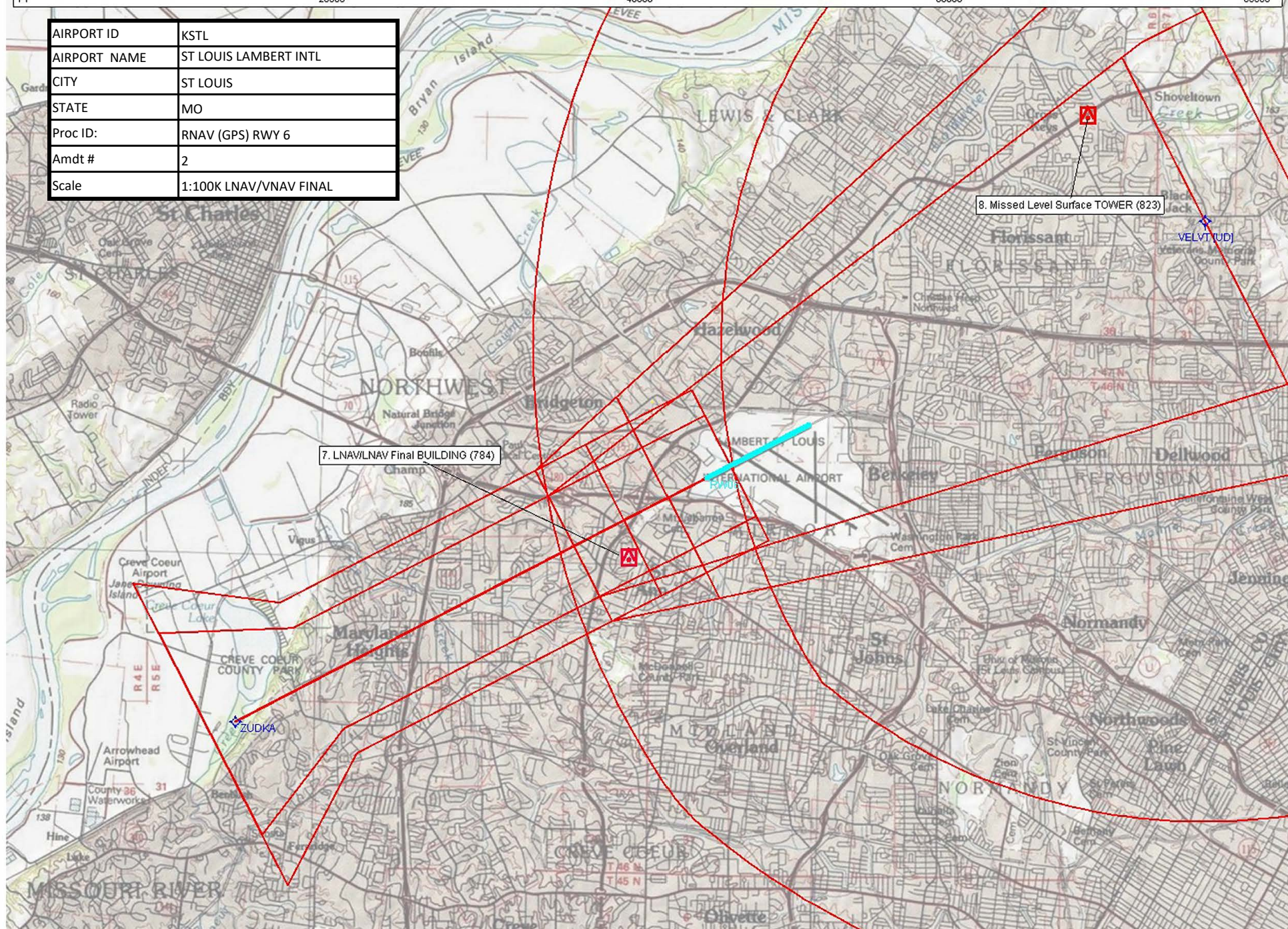




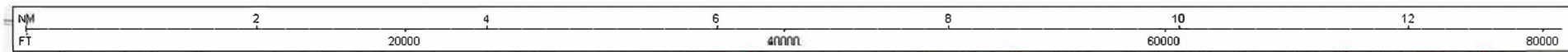




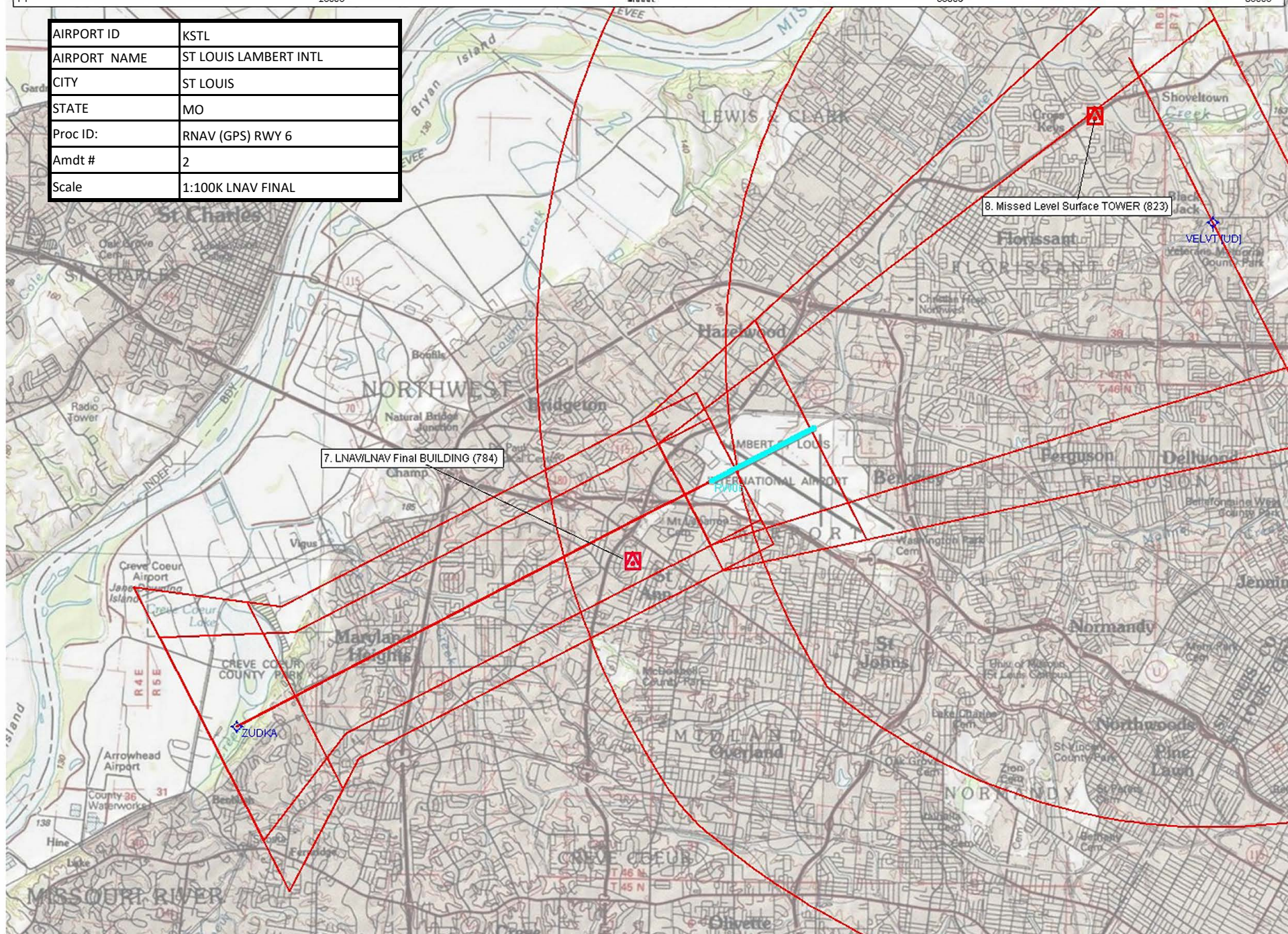
AIRPORT ID	KSTL
AIRPORT NAME	ST LOUIS LAMBERT INTL
CITY	ST LOUIS
STATE	MO
Proc ID:	RNAV (GPS) RWY 6
Amdt #	2
Scale	1:100K LNAV/VNAV FINAL







AIRPORT ID	KSTL
AIRPORT NAME	ST LOUIS LAMBERT INTL
CITY	ST LOUIS
STATE	MO
Proc ID:	RNAV (GPS) RWY 6
Amdt #	2
Scale	1:100K LNAV FINAL





# Federal Aviation Administration Categorical Exclusion Declaration

**Date:** 10/07/19

**IFP:** Hughes, Jimmy (Jimmy.S.Hughes@faa.gov)

**Airport Contact:** -

**Request ID:** KSTL\_19102

**Single or Multiple Procedure:** Multiple

**Procedure Name(s):** RNAV (GPS) RWY 6 AMDT 2 RNAV (GPS) Y RWY 30L AMDT 2 RNAV (RNP) Z RWY 30L AMDT 1 ILS OR LOC RWY 12R AMDT 23 ILS OR LOC RWY 24 AMDT 47 ILS OR LOC RWY 30L AMDT 13 ILS OR LOC RWY 6 AMDT 3

**Procedure Request Description:**

The Federal Aviation Administration (FAA) National Airspace System (NAS) is currently in transition to a "NextGen" NAS from a conventional land-based NAS utilizing navigational aids (NAVAIDS). FAA is implementing more efficient Area Navigation (RNAV) routes and procedures throughout the NAS. This project is a part of the national strategy. For additional information, see <https://www.federalregister.gov/documents/2011/12/15/2011-31451/proposed-provision-of-navigation-services-for-the-next-generation-air-transportation-system-nextgen>.

St Louis Lambert International Airport (KSTL) has requested decommissioning of the MOIDD Locator Outer Market (LOM) Non-Directional Beacon (NDB), OBLIO LOM NDB, and ZUMAY LOM NDB. An Aeronautical Study was conducted for each respectively, Numbers: 18-ACE-18NR, 18-ACE-19NR, and 18-ACE-20NR. Air Traffic Control (ATC) determined that no significant impacts would occur to the NAS. Therefore, ATC agrees with the request to decommission MOIDD LOM, OBLIO LOM, and ZUMAY LOM NDBs. ATC will update the following procedures to reflect the decommissioned equipment and remove any notations from publication.

RNAV (GPS) RWY 6 AMDT 2  
RNAV (GPS) Y RWY 30L AMDT 2  
RNAV (RNP) Z RWY 30L AMDT 1  
ILS OR LOC RWY 12R AMDT 23  
ILS OR LOC RWY 24 AMDT 47  
ILS OR LOC RWY 30L AMDT 13  
ILS OR LOC RWY 6 AMDT 3

The FAA does not anticipate any changes to ground tracts or lowering of altitudes over noise sensitive areas with these changes.

**Declaration of Exclusion:**

The FAA has reviewed the above referenced proposed action and it has been determined, by the undersigned, to be categorically excluded from further environmental documentation according to FAA Order 1050.1, "Environmental Impacts: Policies and Procedures." The implementation of this action will not result in any extraordinary circumstances in accordance with FAA Order 1050.1.

**Basis for this Determination:**

This review was conducted in accordance with policies and procedures in Department of Transportation Order 5610.1, "Procedures for Considering Environmental Impacts" and FAA Order 1050.1.

**The applicable Categorical Exclusion is:**

**5-6.5.k:** Publication of existing air traffic control procedures that do not essentially change existing tracks, create new tracks, change altitude, or change concentration of aircraft on these tracks. (ATO, AVS)

**The above flight procedure has been developed within the accepted parameters.**

Concurrence/Reviewed By: Jennifer Denise Sheetz Digitally signed by Jennifer Denise Sheetz  
Date: 2019.10.07 08:24:45 -05'00' Date: \_\_\_\_\_

Title: Jennifer Sheetz, NISC Contractor, Environmental Specialist, ATO Central Service Center, AJV-C2

Approved By: \_\_\_\_\_ For \_\_\_\_\_ Date: \_\_\_\_\_

Title: Steve Szukala, Manager (A), Operations Support Group, ATO Central Service Center, AJV-C2