

Flight Procedures Cover Page	Task Action: Abbreviated Amendment	Task Type: IAP	Estimated Chart Date: 07/14/2022	APWS Task ID: 48EB32A219FF443287EFA8840B7ED8B3	APWS Project ID: 4D9F01F5EE18479B8828D43A872D69F7
Procedure: RNAV (GPS) RWY 25 AMDT 0F		Enroute: NO	Specialist: Getz, Peter		Agreement Number:
Airport ID: PKMJ			Airport City: MAJURO ATOLL		State:
Facility ID:	Facility Type:	Flight Inspection Remark Type:			
<div>Procedure Comments:</div> <div>Processed IAW Technical Support Group (AJF-17) Memo dated 07/07/2021Guidance for Procedural Changes Requiring Flight Inspection/Validation.</div> <div>THIS CANCELS NOTAM 1/0951</div> <div>ACTIVE DATA USED</div> <div>CONTACT DONALD LANIER: WK: (405) 954-8242 CELL: (405)-210-2999</div> <div>QUALITY 20 CHECKED</div> <div>QUALITY 38 CHECKED</div>					

APP CRS	Rwy Idg	7913
246°	TDZE	7
	Apt Elev	7

# RNAV (GPS) RWY 25

## AMATA KABUA INTL (MAJ)(PKMJ)

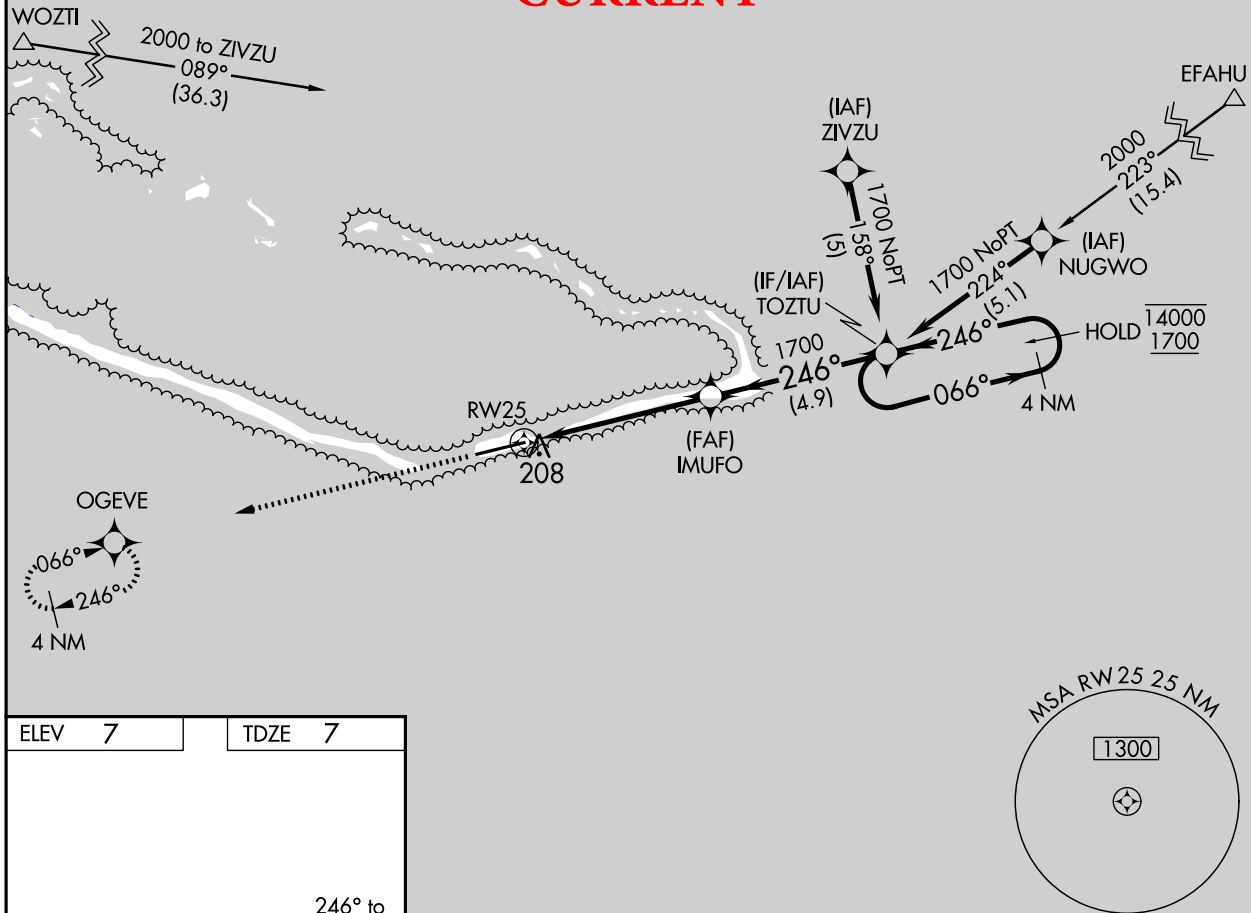
RNP APCH.



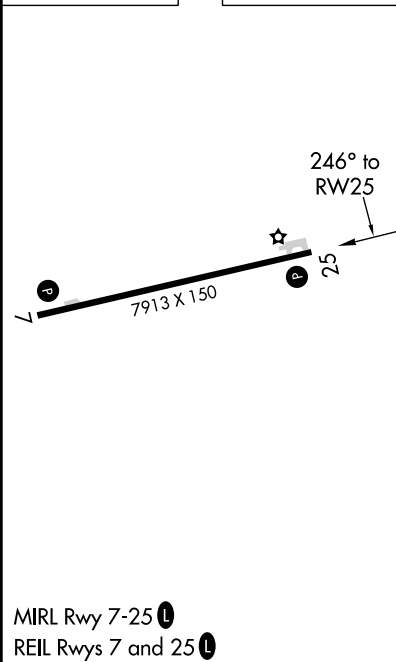
Rwy 25 helicopter visibility reduction below  $\frac{3}{4}$  SM NA.  
Obtain local altimeter setting on CTAF; when not received, procedure NA. Uncontrolled airspace below 5500.

MISSED APPROACH: Climb to 1700 direct OGEVE and hold.

MAJURO RADIO

123.6 (CTAF) **0****CURRENT**

ELEV 7 TDZE 7



1700	OGEVE	IMUFO	TOZTU	4 NM Holding Pattern
≤ 3.00° TCH 54	1700	246°	066°	1400 1700
5.2 NM	4.9 NM			
CATEGORY	A	B	C	D
LNAV MDA	460-1	453 (500-1)	460-1 $\frac{3}{8}$	453 (500-1 $\frac{3}{8}$ )
CIRCLING	520-1	513 (600-1)	520-1 $\frac{1}{2}$ 513 (600-1 $\frac{1}{2}$ )	560-2 553 (600-2)

# Federal Aviation Administration Categorical Exclusion Declaration

**Date:** 08/18/21

**IFP:** Clark, Dave (David.M.Clark@faa.gov)

**Airport Contact:** -

**Request ID:** PGUM\_21818

**Single or Multiple Procedure:** Multiple

**Procedure Name(s):** Please note: This request is for PKMJ/MAJ Kamata Kabua Intl (MAJ/PKMJ); the tool would not accept this airport. RNAV (GPS) RWY 7 RNAV (GPS) RWY 25

**Procedure Request Description:** The Federal Aviation Administration (FAA) is proposing to amend the area navigation (RNAV) (global positioning system [GPS]) RWY 7 and RNAV (GPS) RWY 25 alternate minimum approach procedure notes for use at Amata Kabua International Airport (PKMJ), Majuro Atoll, Marshall Islands. The alternate minimums for RNAV (GPS) RWY 7 and RNAV (GPS) RWY 25 will increase from not applicable to the standard alternate minimums for a non-precision approach type of at least 800 foot ceiling with 2 statute miles visibility. The purpose of the proposed amendments is to enhance operational efficiency and safety by providing aircraft operators additional alternate airports during flight planning, could reduce the required amount of fuel aircraft are legally required to carry, and could provide increased access to the planned destination airport during inclement weather conditions.

## Declaration of Exclusion:

The FAA has reviewed the above referenced proposed action and it has been determined, by the undersigned, to be categorically excluded from further environmental documentation according to FAA Order 1050.1, "Environmental Impacts: Policies and Procedures." The implementation of this action will not result in any extraordinary circumstances in accordance with FAA Order 1050.1.

## Basis for this Determination:

This review was conducted in accordance with policies and procedures in Department of Transportation Order 5610.1, "Procedures for Considering Environmental Impacts" and FAA Order 1050.1.

## The applicable Categorical Exclusion is:

**5-6.5.K:** Publication of existing air traffic control procedures that do not essentially change existing tracks, create new tracks, change altitude, or change concentration of aircraft on these tracks.

**The above flight procedure has been developed within the accepted parameters.**

Concurrence/Reviewed By: \_\_\_\_\_ Date: \_\_\_\_\_

Title: Sara Massey, C.M., Environmental Protection Specialist, OSG-WSC

Approved By: \_\_\_\_\_ Date: \_\_\_\_\_

Title: Lonnie Covalt, Lead Environmental Protection Specialist, OSG-WSC