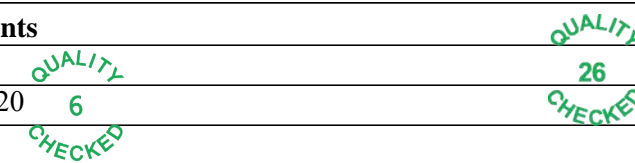
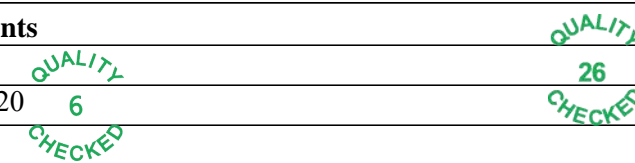
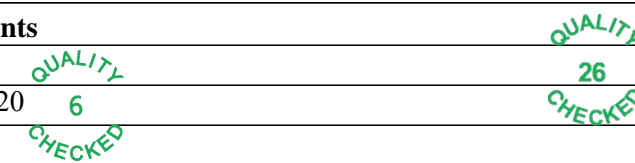


Flight Procedure Tracking Form		Action: AMENDMENT	Task Type: IAP	Date Open: 02/08/2019	Task #: 2017062127852401002	Request #: 20170621278524
Procedure: LOC RWY 18 AMDT 3B			Airport ID: KBXA	Airport: GEORGE R CARR MEMORIAL AIR FLD		Reimbursable #: NO
City: BOGALUSA	ST: LA	GPS #:	Estimated Chart Date: 03/26/2020		FICO #:	
Fac ID: BXA		Fac. Type: LOC			Specialist: MICHAEL HARRIS	
Procedure Review						
	Rec'd	Rel'd	Full Name	Comments		
Lead:	06/21/2017			<div style="text-align: right;">  </div>		
QA:				<div style="text-align: right;">  </div>		
Liaison:				<div style="text-align: right;">  </div>		
Procedure Comments: ENROUTE-NON Remark Type: INFORMATION						
PROCESSED IAW AIRCRAFT OPERATIONS GROUP (AJW-33) MEMO, OCTOBER 3, 2018, SUBJECT: FLIGHT INSPECTION REVIEW NOT REQUIRED. ACTIVE AIRPORT DATA USED FOR KBXA. CONTACT: ALLAN WILL: 405-954-6103						

LOC I-BXA 111.1	APP CRS 183°	Rwy Idg TDZE 119 Apt Elev 119
---------------------------	------------------------	---

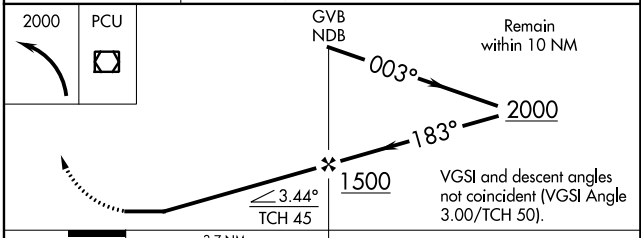
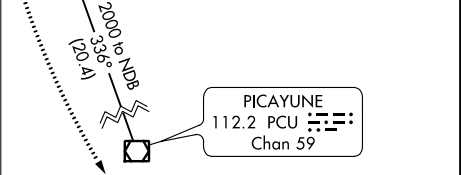
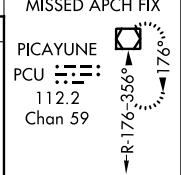
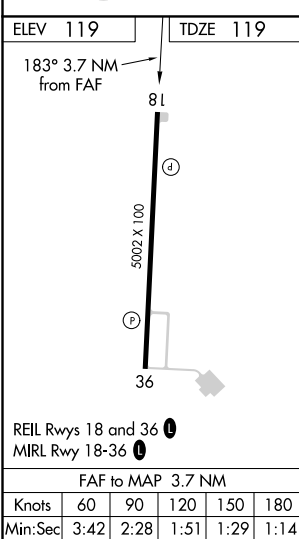
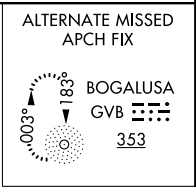
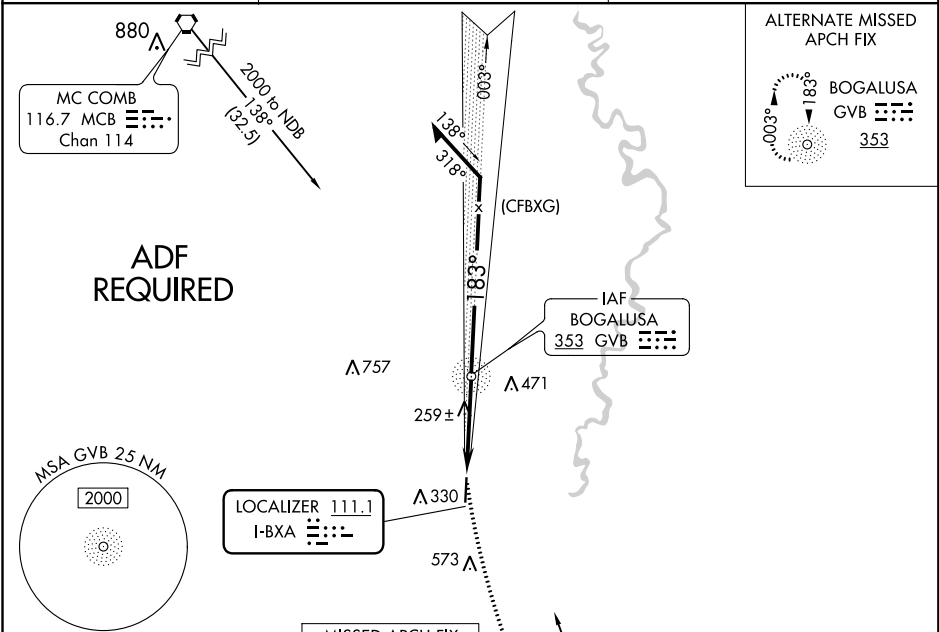
OLD

LOC RWY 18

GEORGE R CARR MEMORIAL AIR FIELD (BXA)

ADF required. When local altimeter setting not received, use Lakefront altimeter setting and increase all MDA 140 feet; increase S-18 and Circling Cat C visibility ½ mile.	MISSED APPROACH: Climbing left turn to 2000 direct PCU VOR/DME and hold.
---	--

AWOS-3PT 118.025	HOUSTON CENTER 126.8 327.8	UNICOM 122.8 (CTAF) 0
----------------------------	--------------------------------------	---------------------------------



CATEGORY	A	B	C	D
S-18	520-1 401 (500-1)	520-1 401 (500-1 1/8)	520-1 401 (500-1 1/8)	NA
CIRCLING	620-1 501 (600-1)	620-1 501 (600-1)	720-1 601 (700-1 3/4)	NA

LOC RWY 18

KBXA
GEORGE R CARR
MEMORIAL AIR FIELD
BOGALUSA, LA
SCALE 1:100,000
LOC RWY 18
AMD 3B

