

Flight Procedures Cover Page	Task Action: FLIGHT CHECK	Task Type: IAP	Estimated Chart Date: 06/12/2025	APWS Task ID: 4875186986774CD283C1956D8084BA79	APWS Project ID: A0D90C3906334F5F998CD632A89CC9EA
Procedure: ILS OR LOC RWY 36 AMDT 1		Enroute: NO	Specialist: Martinez, Rafael		Agreement Number:
Airport ID: KSGT			Airport City: STUTT GART		State: AR
Facility ID:	Facility Type:	Flight Inspection Remark Type: New FC Slot			
<div>Procedure Comments:</div> <div>STUTT LOM TT DECOMMISSIONING.</div> <div>ACTIVE DATA USED FOR KSGT AIRPORT AND RUNWAY (10-12-2017).</div> <div>CONTACT: BEV L BORDY: 405-954-8293/ROBERT G HAMILTON 405-954-4608.</div> <div>QUALITY 38 CHECKED</div>					

STUTT GART, ARKANSAS


AL-408 (FAA)

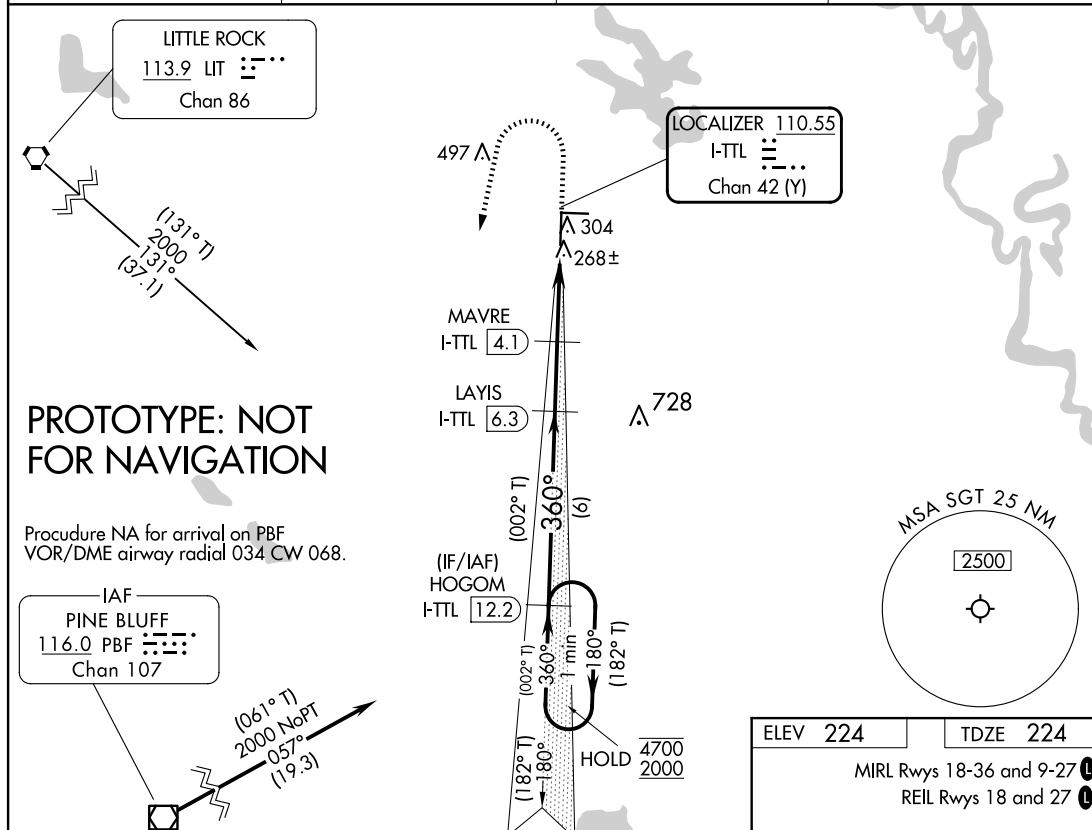
FIG

LOC/DME I-TTL <b>110.55</b> Chan <b>42 (Y)</b>	APP CRS <b>360°</b>	Rwy Idg TDZE Apt Elev <b>6015</b> <b>224</b> <b>224</b>
--	------------------------	--

# ILS or LOC RWY 36

## STUTT GART MUNI CARL HUMPHREY FLD (SGT)

DME required.			<div>MALSF</div> <div></div>	MISSED APPROACH: Climb to 700 then climbing left turn to 2000 on heading 190° and on IIT VORTAC R-131 to HOGOM/I-TTL 12.2 DME and hold.
<div><div><div></div><div></div></div><div>Rwy 36 helicopter visibility reduction below <math>\frac{3}{4}</math> SM NA. Inop table does not apply to S-ILS 36 all Cats. Circling Rwy 9, 27 NA at night. For Inop ALS increase S-LOC 36 Cat C and D visibility to <math>\frac{7}{8}</math> SM.</div></div>				
AWOS-3PT 119.025	LITTLE ROCK APP CON 135.4 353.6	CLNC DEL 123.7	UNICOM 122.8 (CTAF) 0	



1 Min Holding Pattern		HOGOM I-TTL 12.2	700	2000	LIT R-131	HOGOM I-TTL 12.2
		(182° T)	(182° T)	(182° T)	(182° T)	(182° T)
		4700	2000	1900	1220	1200
		(180°)	(360°)	(002° T)	(360°)	(002° T)
		GS 3.00°	TCH 50			
		6 NM	2.1 NM	2.2 NM	0.8 NM	
CATEGORY	A	B	C	D		
S-ILS 36		424- $\frac{3}{4}$	200 (200- $\frac{3}{4}$ )			
S-LOC 36		520- $\frac{3}{4}$	296 (300- $\frac{3}{4}$ )			
CIRCLING	660-1 436 (500-1)	680-1 456 (500-1)	760-1 $\frac{1}{2}$ 536 (600-1 $\frac{1}{2}$ )	860-2 636 (700-2)		

ELEV 224	TDZE 224
MIRL Rwy 18-36 and 9-27	
REIL Rwy 18 and 27	
FAF to MAP 5.1 NM	
Knots	60 90 120 150 180
Min:Sec	5:06 3:24 2:33 2:02 1:42

AUTOMATED AL-408 ILS or LOC RWY 36

SC-1

30 JAN 2025

COMPILER: CG

REVIEWER:

DBL CHKR:

EFF: FIG

STUTT GART, ARKANSAS

STUTT GART MUNI CARL HUMPHREY FLD (SGT)

Amdt 1 FIG

34°36'N-91°35'W

ILS or LOC RWY 36

STUTTGART, ARKANSAS

24137

LOC/DME I-TTL <b>110.55</b> Chan <b>42</b> (Y)	APP CRS <b>360°</b>	Rwy Idg <b>6015</b> TDZE <b>224</b> Apt Elev <b>224</b>
--	------------------------	---

ILS or LOC RWY 36  
STUTTGART MUNI CARL HUMPHREY FLD (SGT)

ADF required.



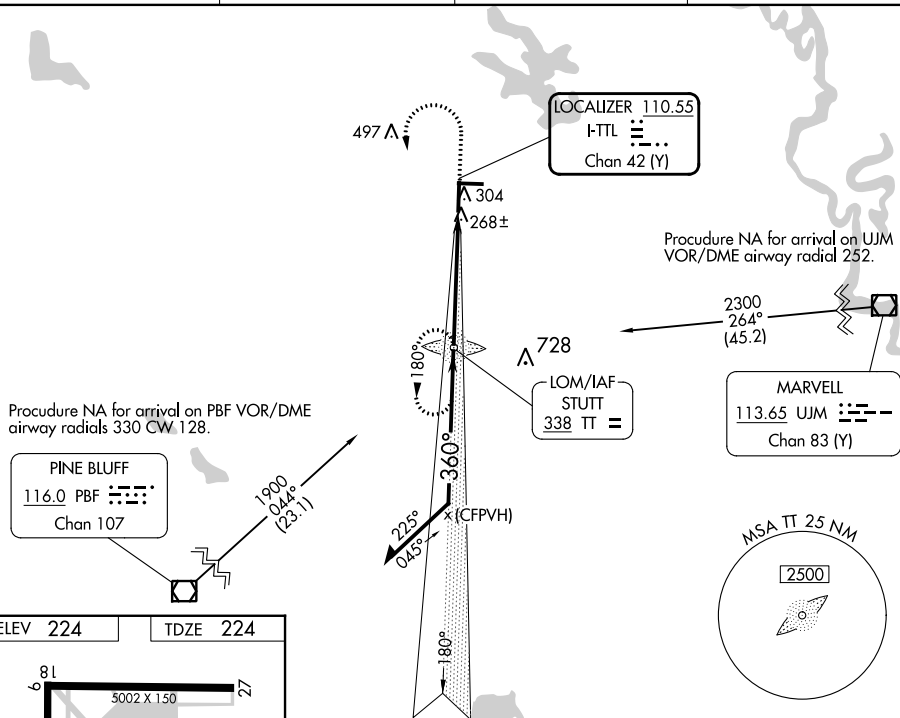
Rwy 36 helicopter visibility reduction below  $\frac{3}{4}$  SM NA. Inop table does not apply to S-ILS all Cats. For Inop ALS increase S-LOC Cat C visibility to  $\frac{7}{8}$  SM.

MALSF



**MISSED APPROACH:**  
Climb to 800 then  
climbing left turn to  
1900 direct STUT LOM  
and hold.

AWOS-3PT <b>119.025</b>	LITTLE ROCK APP CON <b>135.4 353.6</b>	CLNC DEL <b>123.7</b>	UNICOM <b>122.8 (CTAF) 0</b>
----------------------------	---	--------------------------	---------------------------------



ELEV 224 TDZE 224

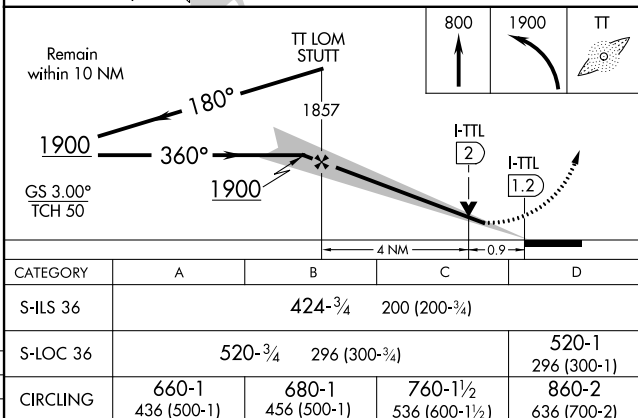
360°

3600

4.9 NM

MIRL Rwy 18-36 and 9-27

REIL Rwy 18 and 27



STUTTGART, ARKANSAS

Orig-F 16MAY24

STUTTGART MUNI CARL HUMPHREY FLD (SGT)

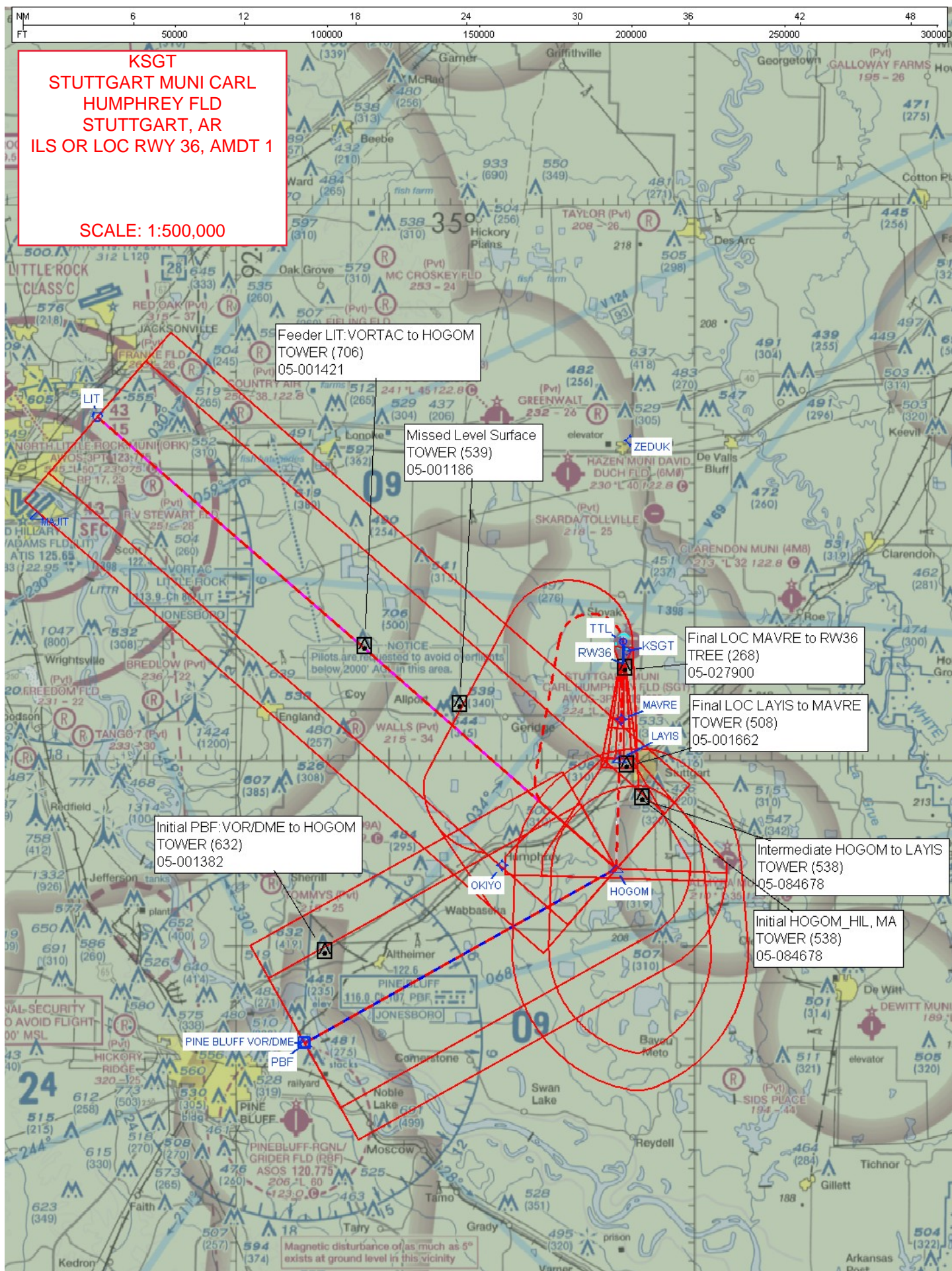
34°36'N-91°34'W

ILS or LOC RWY 36

SC-1, 05 SEP 2024 to 03 OCT 2024

SC-1, 05 SEP 2024 to 03 OCT 2024







NM 2 4 6 8 10000 20000 30000 40000 50000 60000  
FT

KSGT  
STUTTGART MUNI CARL  
HUMPHREY FLD  
STUTTGART, AR  
ILS OR LOC RWY 36, AMDT 1

ILS: ASC

SCALE: 1:100,000

