

STUTT GART, ARKANSAS

AL-408 (FAA)

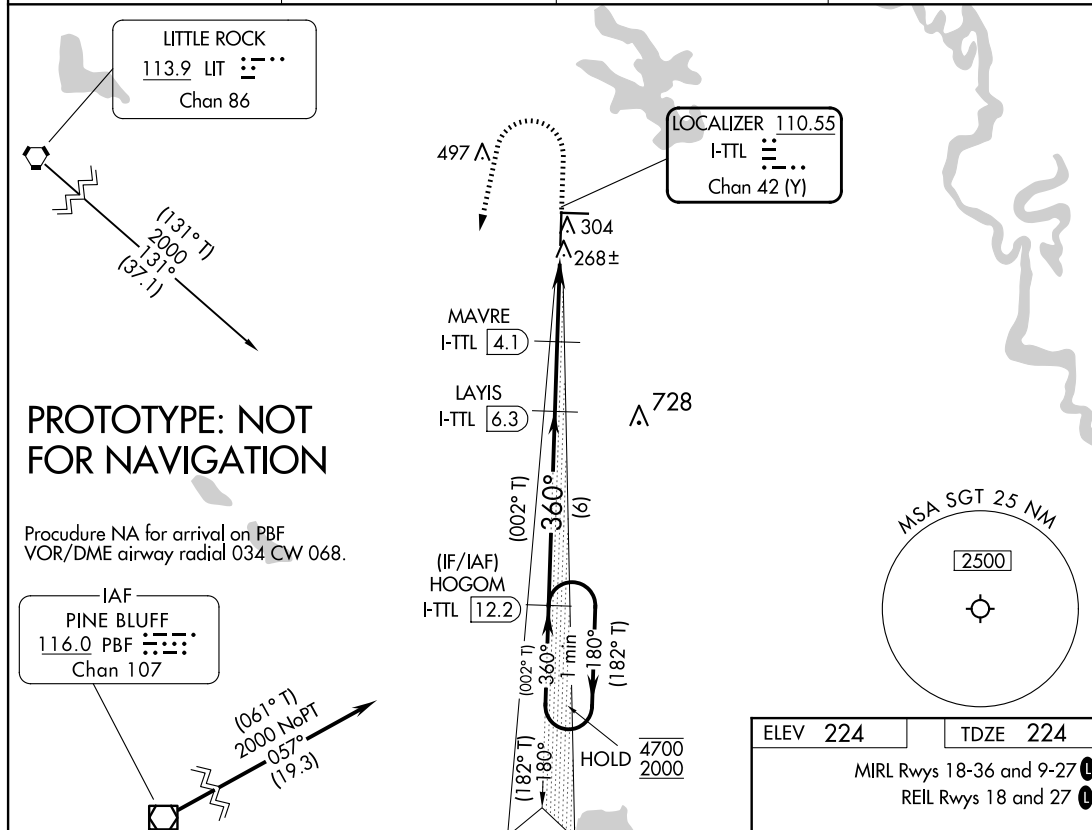
FIG

LOC/DME I-TTL 110.55 Chan 42 (Y)	APP CRS 360°	Rwy Idg TDZE Apt Elev 6015 224 224
--	------------------------	--

ILS or LOC RWY 36

STUTT GART MUNI CARL HUMPHREY FLD (SGT)

DME required.		MALSF	MISSED APPROACH: Climb to 700 then climbing left turn to 2000 on heading 190° and on IIT VORTAC R-131 to HOGOM/ I-TTL 12.2 DME and hold.
<p>⚠ Rwy 36 helicopter visibility reduction below $\frac{3}{4}$ SM NA. Inop table does not apply to S-ILS 36 all Cats. Circling Rwy 9, 27 NA at night. For Inop ALS increase S-LOC 36 Cat C and D visibility to $\frac{7}{8}$ SM.</p>			
AWOS-3PT 119.025	LITTLE ROCK APP CON 135.4 353.6	CLNC DEL 123.7	UNICOM 122.8 (CTAF) 0



1 Min Holding Pattern		HOGOM I-TTL 12.2	700	2000	LIT R-131	HOGOM I-TTL 12.2
		(182° T)	(182° T)	(182° T)	(182° T)	(182° T)
		4700	2000	1900	1220	1200
		(182° T)	(182° T)	(182° T)	(182° T)	(182° T)
		360°	360°	360°	360°	360°
		(002° T)	(002° T)	(002° T)	(002° T)	(002° T)
		GS 3.00°	GS 3.00°	GS 3.00°	GS 3.00°	GS 3.00°
		TCH 50	TCH 50	TCH 50	TCH 50	TCH 50
		6 NM	2.1 NM	2.2 NM	0.8 NM	0.8 NM
CATEGORY	A	B	C	D		
S-ILS 36		424- $\frac{3}{4}$	200 (200- $\frac{3}{4}$)			
S-LOC 36		520- $\frac{3}{4}$	296 (300- $\frac{3}{4}$)			
CIRCLING	660-1 436 (500-1)	680-1 456 (500-1)	760-1 $\frac{1}{2}$ 536 (600-1 $\frac{1}{2}$)	860-2 636 (700-2)		

STUTT GART, ARKANSAS

STUTT GART MUNI CARL HUMPHREY FLD (SGT)

Amdt 1 FIG

34°36'N-91°35'W

ILS or LOC RWY 36

AUTOMATED AL-408 ILS or LOC RWY 36

SC-1

30 JAN 2025

COMPILER: CG

REVIEWER:

DBL CHKR:

EFF: FIG