

Flight Procedures Cover Page	Task Action: FLIGHT CHECK	Task Type: IAP	Estimated Chart Date: 05/16/2024	APWS Task ID: 4835D0198AD442F9B4DB80BC069EF4A0	APWS Project ID: 41AAA4EA67244B098B431A1C812FB2B3
Procedure: RNAV (GPS) Y RWY 31 AMDT 2		Enroute: NO	Specialist: Prassada, Parnell		Agreement Number:
Airport ID: KSNS			Airport City: SALINAS		State: CA
Facility ID:	Facility Type:	Flight Inspection Remark Type: New FC Slot			
<div>Procedure Comments:</div> <div>ACTIVE AIRNAV DATA USED.</div> <div>MISSED APPROACH ALTITUDE LOWERED FROM 4800 TO 3000; HOLDING DIRECTION CHANGED FROM EAST TO WEST.</div> <div>THIS CANCELS NOTAM 3/1095</div> <div>CONTACT: ERIC SUSKI WK: (405) 954-733</div> <div><div>Digitally signed by</div><div><b>ERIC N SUSKI</b></div><div>Apr 01, 2024</div></div> <div><div>QUALITY</div><div>21</div><div>CHECKED</div></div> <div><div>QUALITY</div><div>41</div><div>CHECKED</div></div>					



<b>FIPC BASIC FORM</b>						
<b>PROCEDURE:</b> RNAV (GPS) Y RWY 31 AMDT 2			<b>AIRPORT NAME:</b> SALINAS MUNI		<b>AIRPORT ID:</b> KSNS	<b>SPECIAL CONTROL NO:</b> SG-01-208-24
<b>FAC ID:</b> KSNS31.02Y		<b>CITY:</b> SALINAS			<b>ST:</b> CA	<b>ORIG CHART DATE:</b> 05/16/2024
<b>DFL TYPE:</b> PROC/G	<b>THIRD PARTY:</b> <input type="checkbox"/> YES	<b>EST. TIME ON SITE:</b> 0.5	<b>REIMB. NUMBER:</b>	<b>PTS TASK ID:</b> 4835D0198AD442F9B4DB80BC069EF4A0		
<b>PREFLIGHT NOTES</b>						
<b>REVIEWER:</b> troy e devine					<b>DATE:</b> 03/29/2024	
<b>COMMENTS:</b>					<b>CHECK ONE:</b>	
					<input checked="" type="checkbox"/> FLT CK REQ <input type="checkbox"/> NFCR <input type="checkbox"/> REJECT	
					<div style="display: flex; justify-content: space-between;"> <span></span> <span>YES</span> <span>NO</span> </div>	
					<b>CPV COMPLETE?</b>	
					X	
<b>PROCEDURE RESULTS</b>						
<b>INSPECTION DATE:</b> 03/29/2024	<b>CREW #:</b> VN502	<b>N #:</b> N75	<b>INSTRUMENT PROCEDURE STATUS:</b> <input checked="" type="checkbox"/> SAT <input type="checkbox"/> SAT W/CHANGES <input type="checkbox"/> UNSAT		<b>ARINC CODING:</b> <input checked="" type="checkbox"/> SAT <input type="checkbox"/> SAT/GOLD <input type="checkbox"/> UNSAT	
<b>FLIGHT INSPECTOR SIGNATURE:</b> troy e devine @ 03/29/2024 15:50			<b>PRINTED NAME:</b> DEVINE, TROY ELLEN			<b>NOTAM INITIATED?</b> <input type="checkbox"/> YES <input checked="" type="checkbox"/> NO
<b>FLIGHT INSPECTOR REMARKS:</b> SG-01-208-24 SALINAS MUNI, Salinas CA. RNAV (GPS) RWY 13 AMDT 2. Minor changes missed approach alt lowered to 3000' new hold, LNAV mins raised, Circling C/D raised. Flown - SAT						
<b>IN-FLIGHT OBSTACLE REPORT</b>						
<b>OBSTRUCTION ID #:</b>	<b>COORDINATES OR LOCATION:</b>	<b>GNSS ALTITUDE (MSL):</b>	<b>BAROMETRIC ALTITUDE (MSL):</b>	<b>HEIGHT ABOVE GROUND LEVEL:</b>		

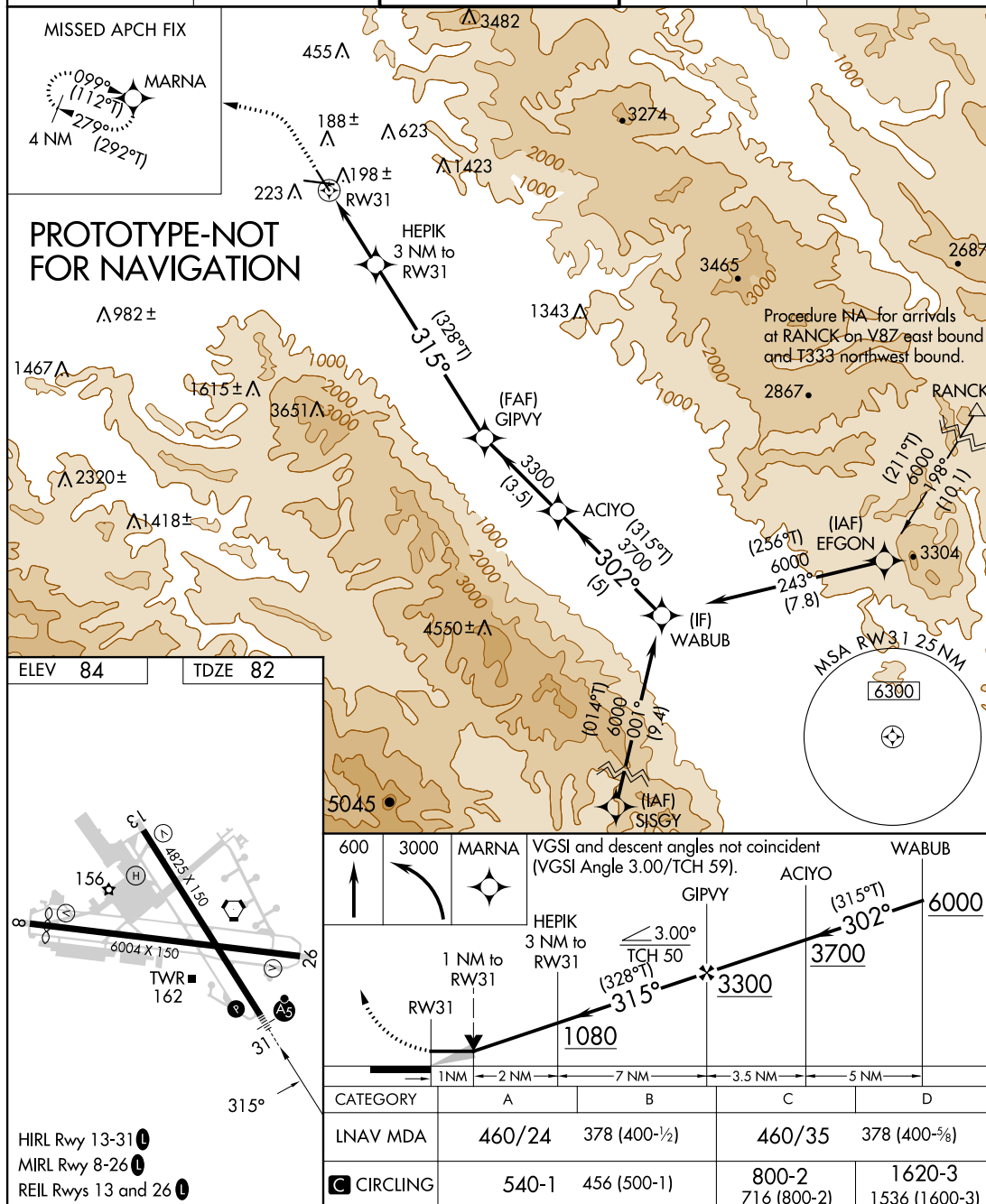
FIG

APP CRS <b>315°</b>	Rwy Idg TDZE Apt Elev	<b>4825</b> <b>82</b> <b>84</b>
------------------------	-----------------------------	---------------------------------------

# RNAV (GPS) Y RWY 31

## SALINAS MUNI (SNS)

RNP APCH - GPS.		<div>MALSR</div> <div></div>	MISSED APPROACH: Climb to 600 then climbing left turn to 3000 direct MARNA and hold, continue climb-in-hold to 3000.		
<div><div><div><div></div><div></div></div><div></div></div></div>	Circling NA for Cat C northeast of Rwy 13 and north of Rwy 26. Circling NA for Cat D northeast of Rwy 13-31.				
ATIS 124.85	NORCAL APP CON 133.0 251.15	SALINAS TOWER ★ 119.525 (CTAF)  239.3		GND CON 121.7	UNICOM 123.0



AUTOMATED AL-363 RNAV (GPS) Y RWY 31  
AUTOMATED AL-363 RNAV (GPS) Y RWY 31

SW-2  
01/22/24  
COMPILER: JUN  
REVIEWER:  
DBL CHKR:  
EFF: FIG



SALINAS, CALIFORNIA  
Amdt 2 FIG

36°40'N-121°36'W

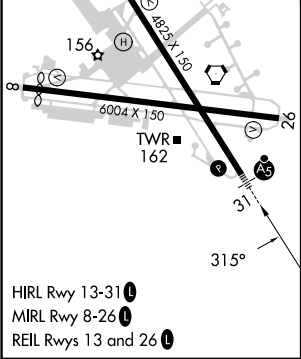
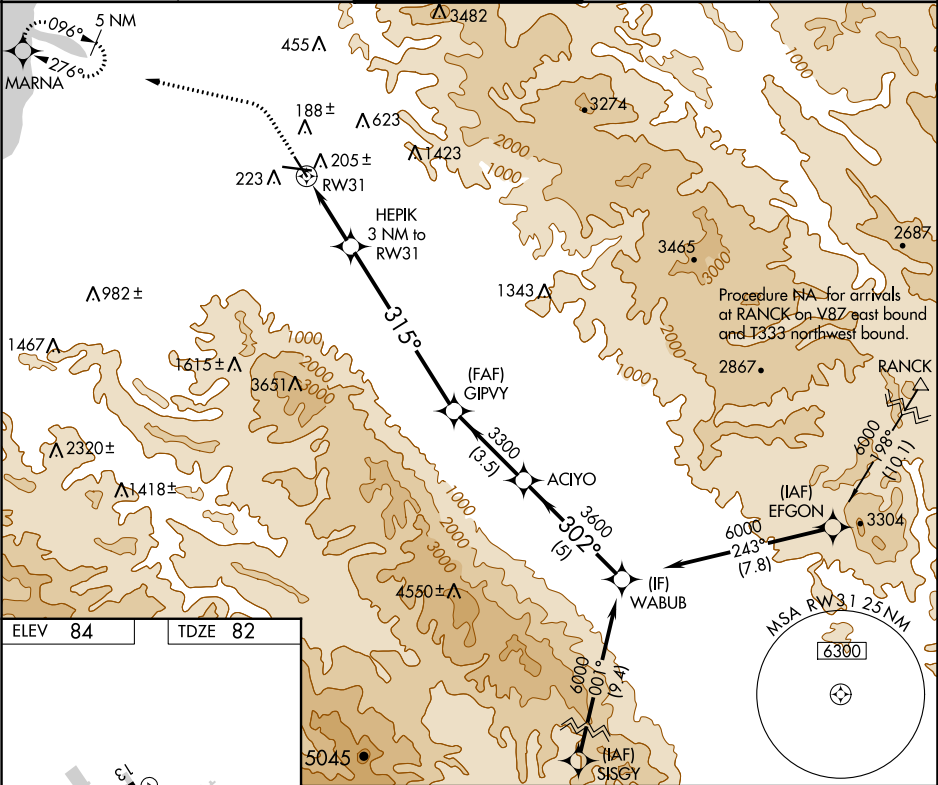
SALINAS MUNI (SNS)  
RNAV (GPS) Y RWY 31





APP CRS	Rwy Idg	<b>4825</b>
<b>315°</b>	TDZE	<b>82</b>
	Apt Elev	<b>84</b>

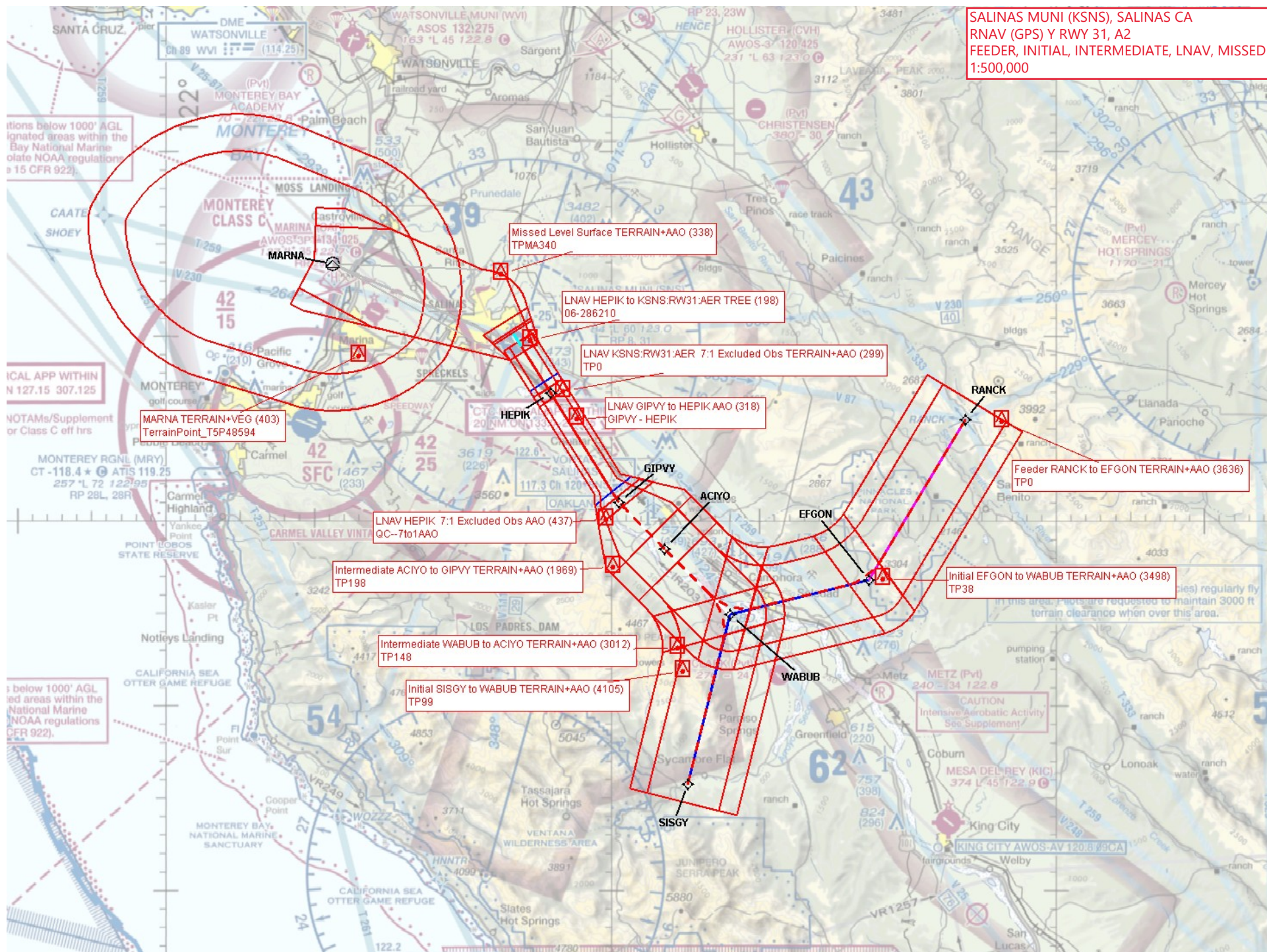
RNAV (GPS) Y RWY 31  
SALINAS MUNI (SNS)

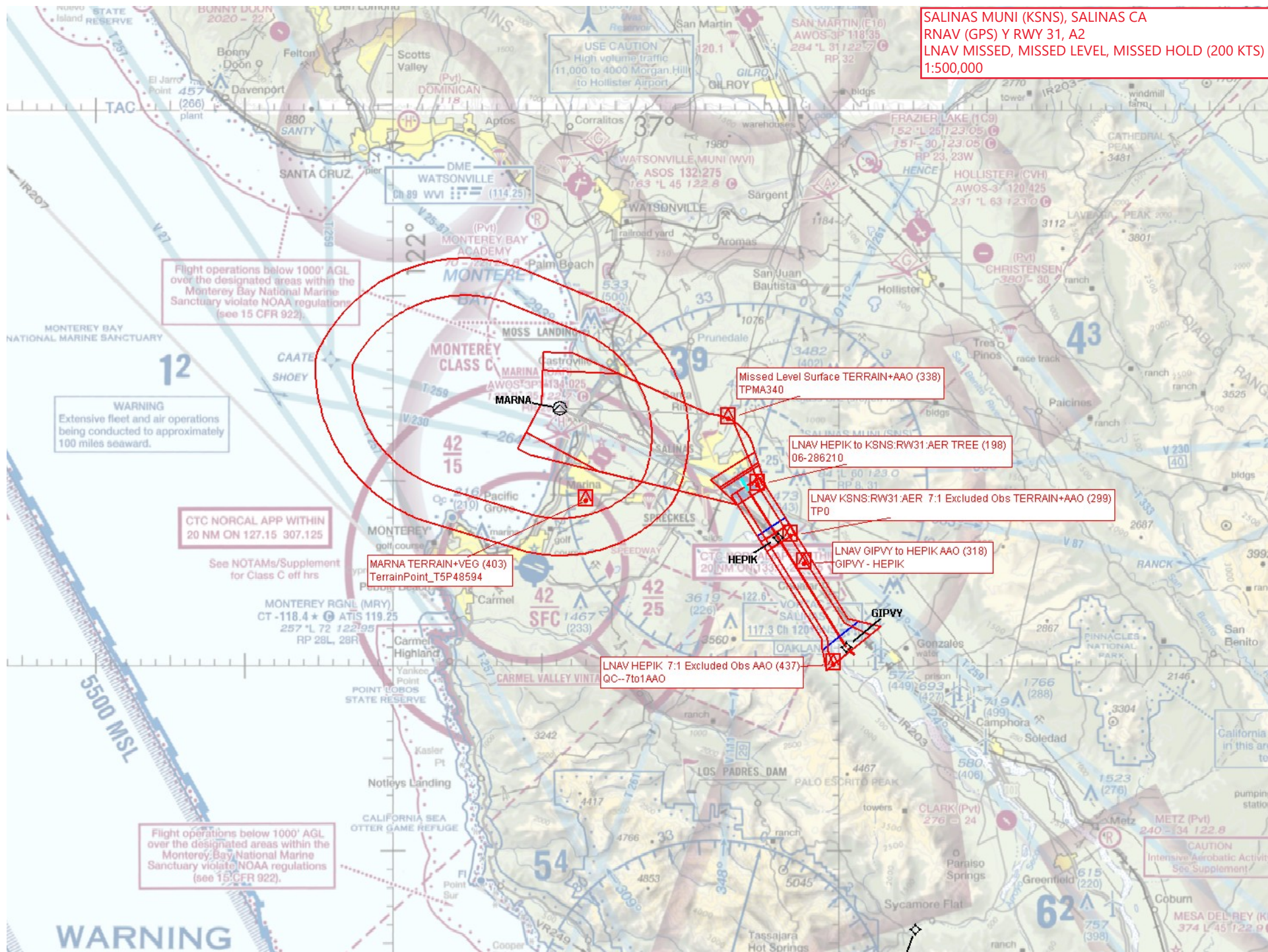
RNP APCH-GPS.	MALSR	MISSED APPROACH: Climb to 600 then climbing left turn to 4800 direct MARNA and hold, continue climb-in-hold to 4800.
		

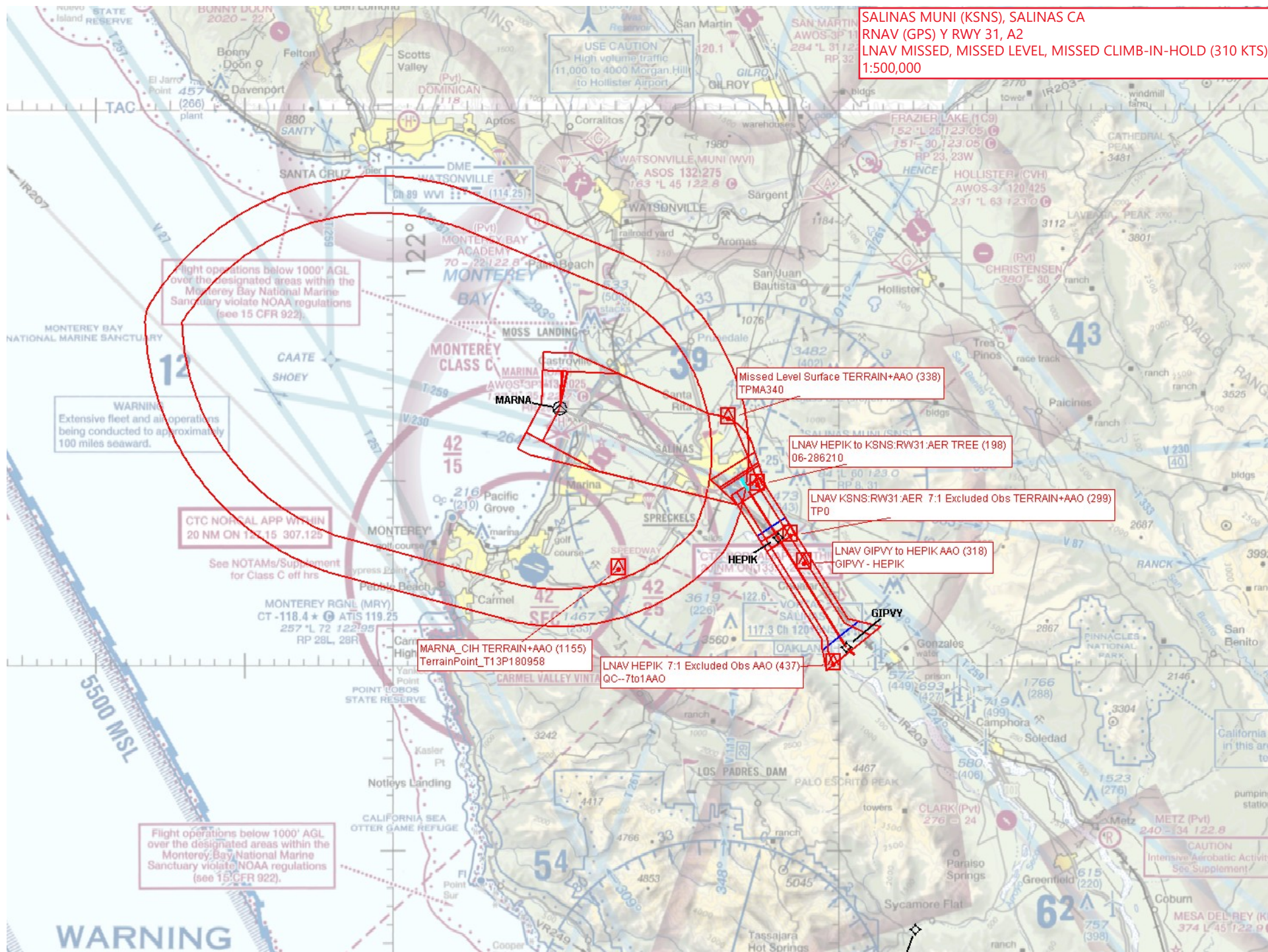
ATIS <b>124.85</b>	NORCAL APP CON <b>133.0 251.15</b>	SALINAS TOWER ★ <b>119.525 (CTAF) 0 239.3</b>	GND CON <b>121.7</b>	UNICOM <b>123.0</b>
-----------------------	---------------------------------------	--	-------------------------	------------------------



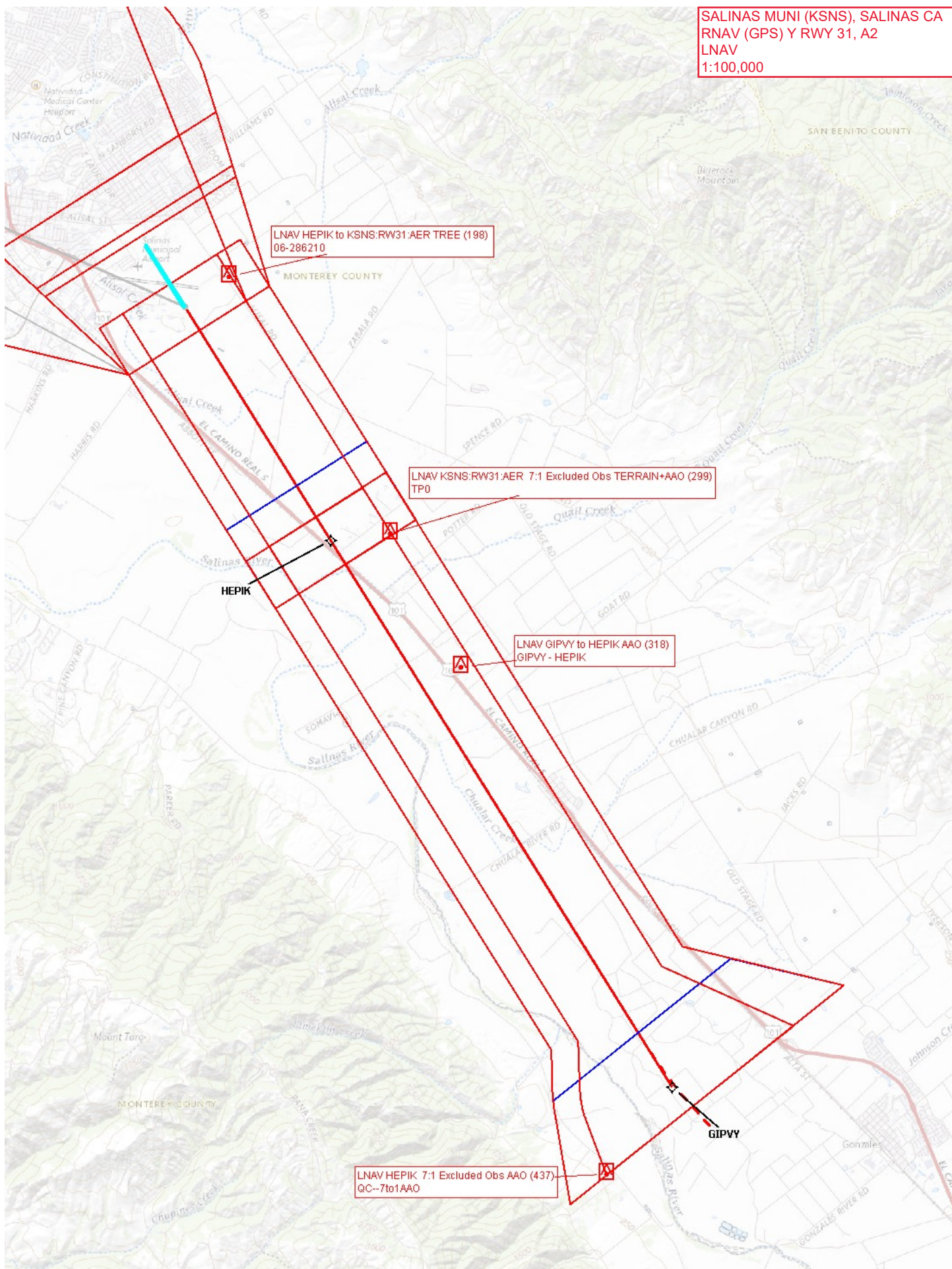
600	4800	MARNA	VGSI and descent angles not coincident (VGSI Angle 3.00/TCH 59).	WABUB
				
		HEPIK 3 NM to RW31	≤ 3.00° TCH 50	
		0.9 NM to RW31		
		RW31		
		0.9	2 NM	7 NM
		3.5 NM	5 NM	
CATEGORY	A	B	C	D
LNAV MDA	440/24	358 (400-½)	440/30	358 (400-¾)
 CIRCLING	540-1	456 (500-1)	780-2 696 (700-2)	1620-3 1536 (1600-3)







SALINAS MUNI (KSNS), SALINAS CA  
RNAV (GPS) Y RWY 31, A2  
LNAV  
1:100,000



SALINAS MUNI (KSNS), SALINAS CA  
RNAV (GPS) Y RWY 31, A2  
CIRCLING  
1:100,000

