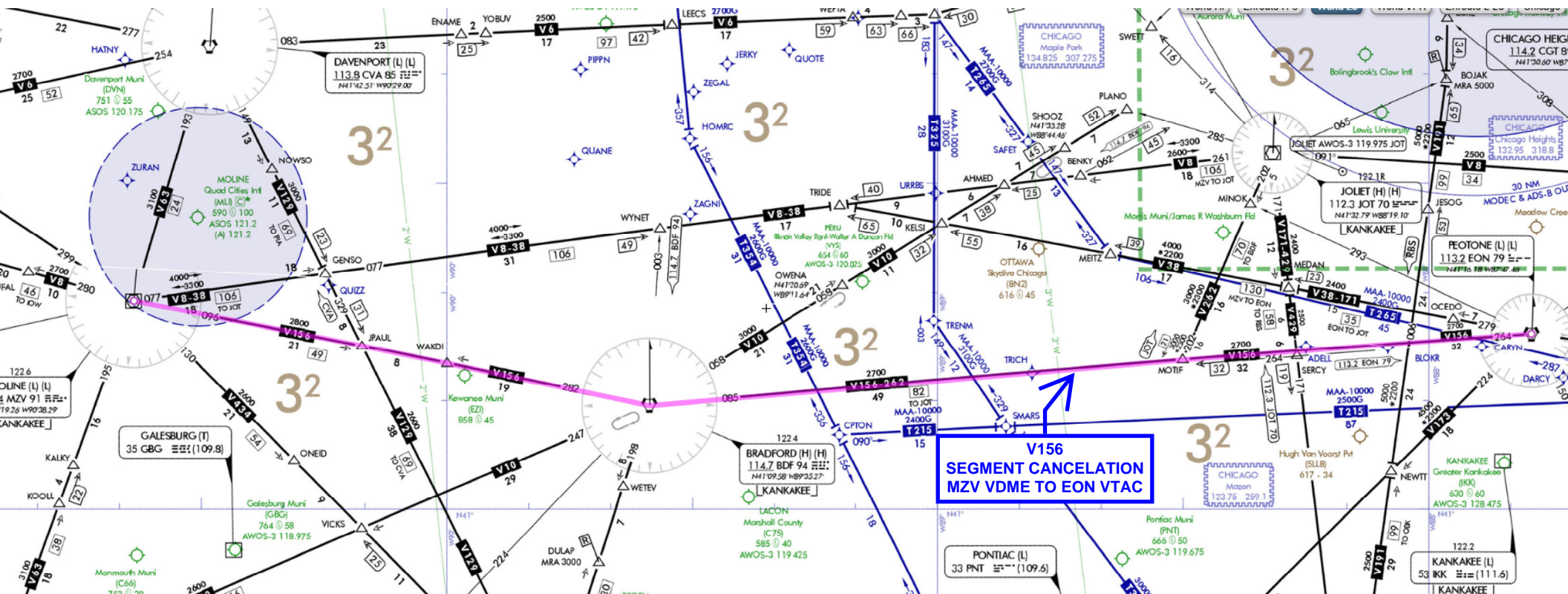


Flight Procedures Cover Page	Task Action: Cancellation	Task Type: Segment	Estimated Chart Date: 08/07/2025	APWS Task ID: 47873E867EEF43B6B7E2A8972A5D961F	APWS Project ID: A93C7E02791A49B28C038BD05930EE6D
Procedure: V156 MZV VOR_DME, IL TO EON VORTAC, IL		Enroute: YES	Specialist: Shelton, Gale		Agreement Number:
Airport ID:			Airport City:		State:
Facility ID:	Facility Type:	Flight Inspection Remark Type:			
<div>Procedure Comments:</div> <div>AIRWAY STARTING POINT: MOLINE VOR/DME, IL 411915.32N/0903817.57W</div> <div>SEGMENT CANCELED - BDF VORMON</div> <div>CONTACT: ALLAN WILL, AJV-A423, 405-954-6103</div> <div>6/12/25: THIS IS A CORRECTED COPY OF THE FORM APPROVED ON 3/21/25.</div> <div>8260-2 PEOTONE VORTAC</div> <div>1. ADDED SPECIAL IAP ILS M RWY 31R AT KMDW IN FIX USE.</div> <div>8260-2 MOTIF</div> <div>1. ADDED REMARK "ATC REQUEST EN ROUTE LOW CHARTING".</div> <div>8260-2 WAKDI</div> <div>1. ADDED REMARK "ATC REQUEST EN ROUTE LOW CHARTING".</div> <div>QUALITY 18 CHECKED</div>					



V156
SEGMENT CANCELLATION
MZV VDME TO EON VTAC
SKEYVECTOR MAP
MAP 1 OF 1