

Flight Procedures Cover Page	Task Action: P-NOTAM	Task Type: IAP	Estimated Chart Date: 05/16/2024	APWS Task ID: 473F950311DF4A188C3F681B7F17B3DD	APWS Project ID: 5E71C33A8DE64471A2E527D81A64808D
Procedure: VOR-A AMDT 0C		Enroute: NO	Specialist: Dumar, Ralph		Agreement Number:
Airport ID: KGGG			Airport City: LONGVIEW		State: TX
Facility ID:	Facility Type:	Flight Inspection Remark Type:			
<div>Procedure Comments: PROCESSED IAW TECHNICAL SUPPORT GROUP (AJF-17) MEMO DATED 07/07/2021 GUIDANCE FOR PROCEDURAL CHANGES REQUIRING FLIGHT INSPECTION/VALIDATION</div> <div>REMARKS: GGG AI PORTAL INQUIRY. CONTACT RAKE MCGRAW (405) 954-8711</div> <div><div>QUALITY 33 CHECKED</div><div>QUALITY 13 CHECKED</div></div>					

LONGVIEW, TEXAS

AL-807 (FAA)

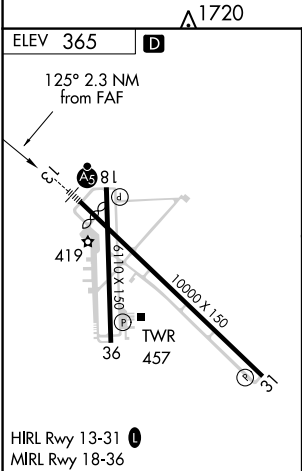
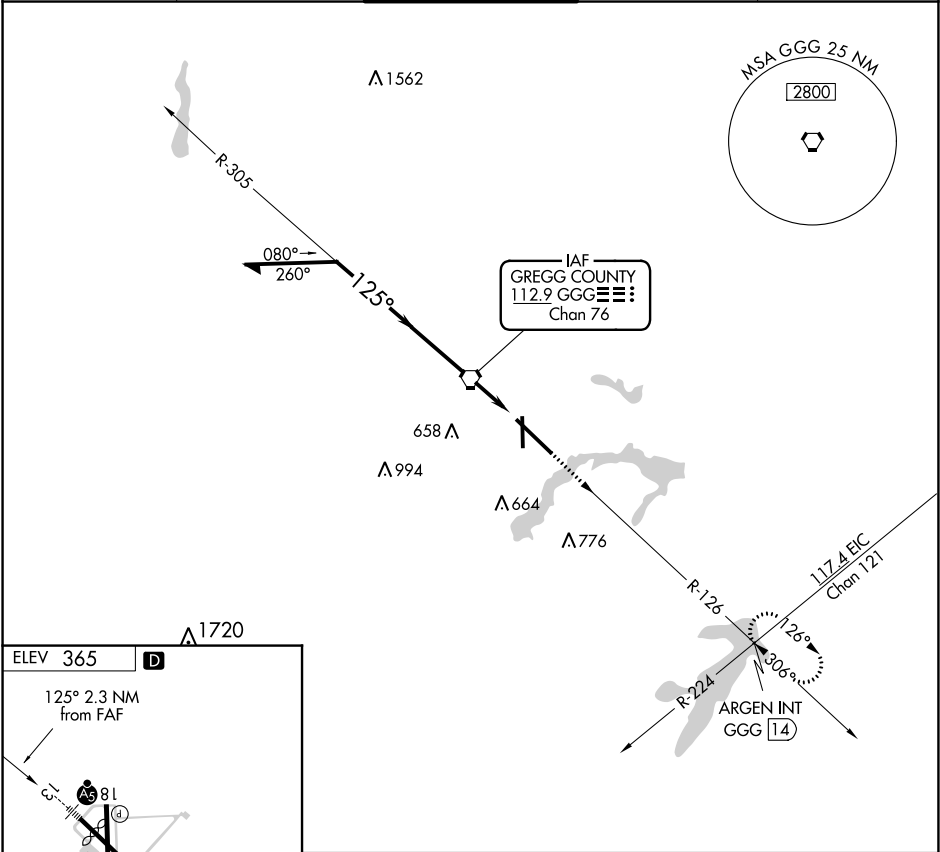
21084

VORTAC GGG	APP CRS	Rwy Idg	N/A
112.9	125°	TDZE	N/A
Chan 76		Apt Elev	365



VOR-A
EAST TEXAS RGNL (GGG)

▼ When local altimeter setting not received, use Gilmer altimeter setting and increase all MDA 60 feet.		MISSED APPROACH: Climb to 3000 via GGG VORTAC R-126 to ARGEN Int/GGG 14 DME and hold.		
ATIS 119.65	LONGVIEW APP CON★ 128.75 379.15	EASTEX TOWER★ 119.2 (CTAF) 377.05	GND CON 121.6	UNICOM 122.95



FAF to MAP 2.3 NM						2.3 NM				
Knots	60	90	120	150	180	CATEGORY	A	B	C	D
Min:Sec	2:18	1:32	1:09	0:55	0:46	CIRCLING	860-1	495 (500-1)	980-1¾ 614 (700-1¾)	1080-2¼ 714 (800-2¼)

LONGVIEW, TEXAS
Orig-B 25MAR21

32°23'N-94°43'W

EAST TEXAS RGNL (GGG)
VOR-A

SC-2, 30 NOV 2023 to 28 DEC 2023

SC-2, 30 NOV 2023 to 28 DEC 2023