

Flight Procedures Cover Page	Task Action: P-NOTAM	Task Type: IAP	Estimated Chart Date: 08/12/2021	APWS Task ID: 46CDC961EB41404BA41FE0FEE13D7FAD	APWS Project ID: A20872F4B04740A3B818AF754A676494
Procedure: RNAV (GPS) RWY 5 AMDT 0G		Enroute: NO	Specialist: Marsh, Andre		Agreement Number:
Airport ID: KGON			Airport City: GROTON (NEW LONDON)		State: CT
Facility ID:	Facility Type:	Flight Inspection Remark Type:			
<p>Procedure Comments: P-NOTAM CIRCLING RADII INCREASE CONTACT JASON KRETSCHMER, AJV-A421, 405-954-4019</p> <div style="display: flex; justify-content: space-between; align-items: flex-end; margin-top: 20px;"> <div style="text-align: center;"> <p><i>Digitally signed by</i> JASON KRETSCHMER Jun 22, 2021</p> </div> <div style="text-align: center;"> <p><i>Digitally signed by</i> MARY MCDONALD Jun 22, 2021</p> </div> </div>					

QUALITY
 30 6/21 BBLUE
 CHECKED
 QUALITY
 12
 CHECKED

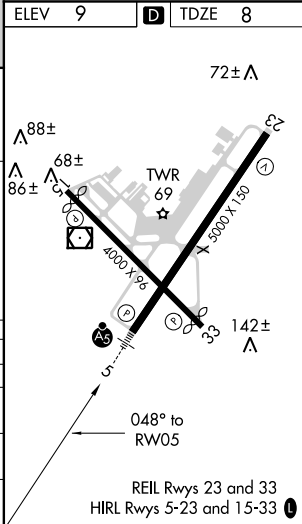
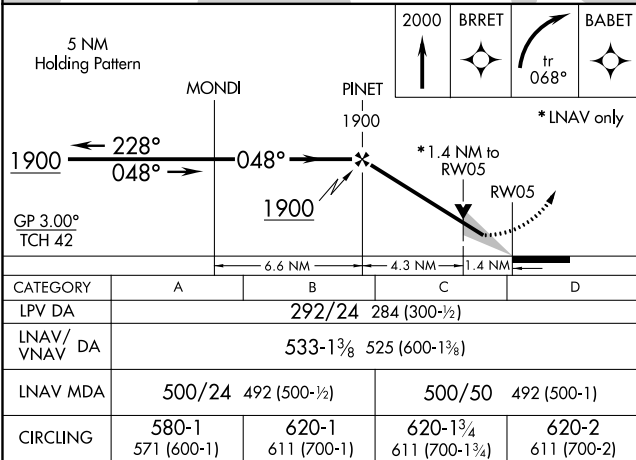
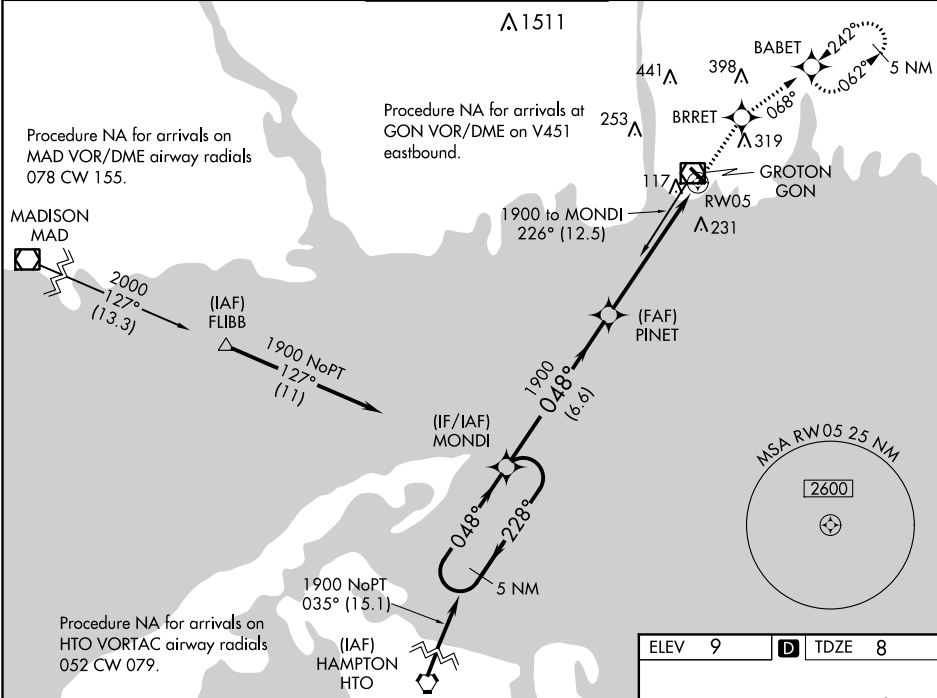
WAAS CH 45521 W05A	APP CRS 048°	Rwy Idg TDZE Apt Elev	5000 8 9
--	------------------------	-----------------------------	-------------------------------------



RNAV (GPS) RWY 5
GROTON-NEW LONDON (GON)

For uncompensated Baro-VNAV systems, LNAV/VNAV NA below -15°C (5°F) or above 54°C (130°F). DME/DME RNP-0.3 NA. Night landing: Rwy 15 NA. For inop MALSR, increase LPV all Cats visibility to RVR 5000 and LNAV Cat C/D visibility to 1½.	MALSR 	MISSED APPROACH: Climb to 2000 direct BRRET and on track 068° to BABET and hold, continue climb-in-hold to 2000.
---	-----------	--

ATIS 127.0	PROVIDENCE APP CON ★ 125.75 319.2	GROTON TOWER ★ 125.6 (CTAF) 236.775	GND CON 121.65 236.775	CLNC DEL ★ 119.85
----------------------	---	---	----------------------------------	-----------------------------



NE-1, 17 JUN 2021 to 15 JUL 2021

NE-1, 17 JUN 2021 to 15 JUL 2021

