

| | | | | | |
|---|-------------------------|--------------------------------|-------------------------------------|---|--|
| Flight Procedures Cover Page | Task Action: P-NOTAM | Task Type: IAP | Estimated Chart Date: 10/06/2022 | APWS Task ID: 46C63D2C1CED48DD84B3F6A60352020D | APWS Project ID: 67B3286F745448F599391D6FD2626AB9 |
| Procedure: RNAV (GPS) RWY 21 AMDT 0B | | Enroute: NO | Specialist: Miller, Ralph | | Agreement Number: |
| Airport ID: KTTF | | | Airport City: MONROE | | State: MI |
| Facility ID: | Facility Type: | Flight Inspection Remark Type: | | | |
| <div>Procedure Comments: ORDER 8260.3, CHAPTER 2, NEW CIRCLING CRITERIA APPLIED</div> <div>ACTIVE DATA USED.</div> <div>INCORPORATES T-NOTAM (2/1184)</div> <div>CONTACT JASON KRETSCHMER, AJV-A421, 405-954-4019.</div> <div><div>Digitally signed by JASON KRETSCHMER Aug 19, 2022</div><div>QUALITY 47 CHECKED</div><div>QUALITY 33 CHECKED</div></div> | | | | | |

MONROE, MICHIGAN

AL-5642 (FAA)

21112

| | | |
|--|------------------------|---|
| WAAS CH 86707 W21A | APP CRS 208° | Rwy Idg 4997 TDZE 616 Apt Elev 616 |
|--|------------------------|---|

OLD
RNAV (GPS) RWY 21
 CUSTER (TTF)

RNP APCH.

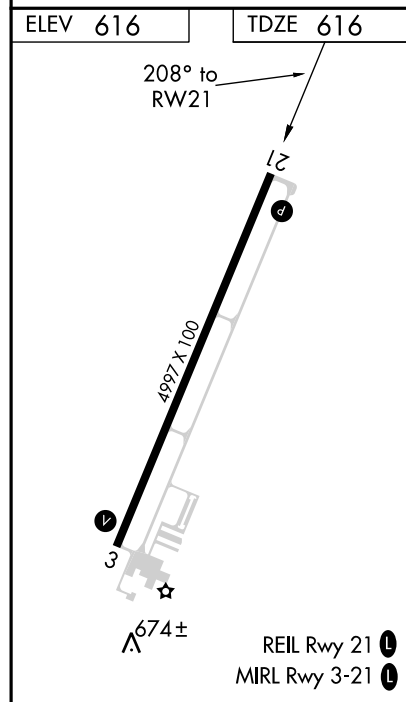
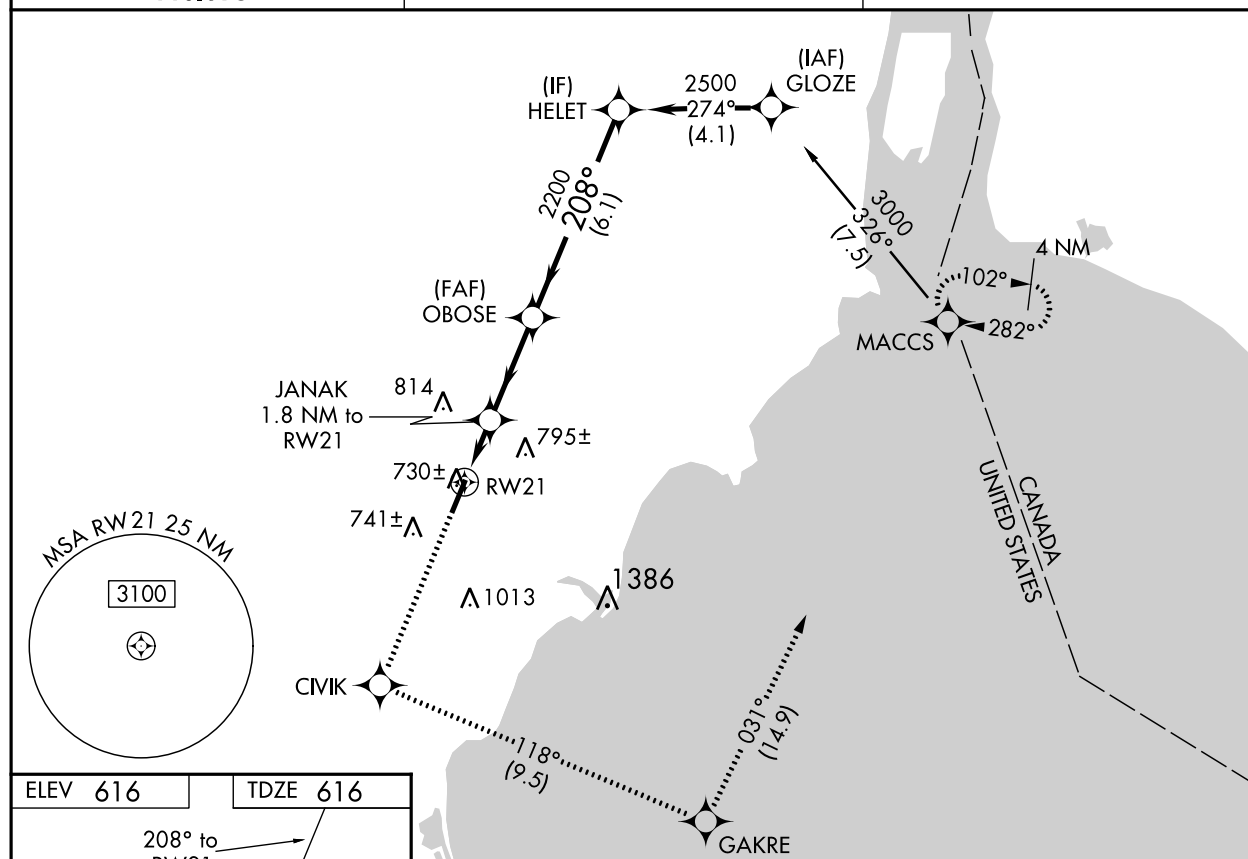


For uncompensated Baro-VNAV systems, LNAV/VNAV NA below -16°C (4°F) or above 47°C (116°F). When local altimeter setting not received, use Detroit Metro Wayne County altimeter setting and increase LPV DA 43 feet and all visibilities ¼ SM, LNAV/VNAV DA 138 feet and all visibilities ½ SM and all MDA 60 feet and Cat C visibilities ¼ SM. Baro-VNAV and VDP NA when using Detroit Metro Wayne County altimeter setting.

MISSED APPROACH:
Climb to 3000 direct CIVIK and on track 118° to GAKRE and on track 031° to MACCS and hold.

 AWOS-3
119.075

 DETROIT APP CON
134.3 363.2

 UNICOM
122.7 (CTAF) 0


| | | | | | |
|--------------|----------------------|--------------------|----------------------|--|---------------------|
| 3000 | CIVIK | GAKRE | MACCS | VGSi and RNAV glidepath not coincident (VGSi Angle 3.50/TCH 49). | |
| ↑ | tr 118° | tr 031° | | HELET | |
| | | | | OBOSE | |
| | | | | 2200 | 2500 |
| | | | | 2200 | GP 3.00° TCH 42 |
| | | | | 0.9 NM | 0.9 NM |
| | | | | 3 NM | 6.1 NM |
| CATEGORY | A | B | C | D | |
| LPV DA | 966-1¼ 350 (400-1¼) | | | | |
| LNAV/VNAV DA | 1009-1½ 393 (400-1½) | | | | |
| LNAV MDA | 980-1 364 (400-1) | | | | 980-1¼ 364 (400-1¼) |
| CIRCLING | 1120-1 504 (600-1) | 1180-1 564 (600-1) | 1180-1½ 564 (600-1½) | 1180-2 564 (600-1) | |

 MONROE, MICHIGAN
 Orig-A 24MAY18

41°56'N-83°26'W

 CUSTER (TTF)
RNAV (GPS) RWY 21

EC-1, 16 JUN 2022 to 14 JUL 2022

EC-1, 16 JUN 2022 to 14 JUL 2022

KTTF
CUSTER
MONROE, MI
NEW CIRCLING AREA
1:100,000K
RADII: 1.30, 1.83, 2.87, 3.75

