

DME DME Assessment Results for FSHUN3 path KMCO:RW17L:DER_BAAIT

Results Summary

Flyability:	Completed
DME/DME:	Completed - No Critical DMEs
Name:	Miles CTR Carpenter
Project File:	C:\Users\Miles CTR Carpenter\Desktop\FLMP May 2022 DME Evaluations\KMCO\KMCO FSHUN3 SID DME 20211109_1541 EST\KMCO FSHUN3 SID DME_211109.tgs
Output File:	C:\Users\Miles CTR Carpenter\Desktop\FLMP May 2022 DME Evaluations\KMCO\KMCO [IFPA] FSHUN3 20211210_1500 EST\KMCO-RW17L-DER_BAAIT\KMCO FSHUN3 SID KMCO RW17L BAAIT 20211210_1500 EST.pdf
Procedure Name:	FSHUN3
Software: DmeDmePlugin:	6.4.1
Date/Time:	12/10/2021 15:00 EST
Databases:	DTED MAX

Failures

No Failures

Warnings

No Warnings

Notes For Flight Check

None

Flight Plan

Name	Type	Lat/Lon	Altitude (ft)	VNAV Mode	Ground Speed (kts)	Turn Type	Leg Type
KMCO:RW17L:DER	WP	N28° 25' 08.197", W081° 16' 56.380"	89.7	VNAV	130	FLY_BY	TF
BAAIT	WP	N28° 19' 58.748", W081° 19' 32.518"	1500	VNAV	200	FLY_BY	TF
Climb Gradient: 500.0 ft/NM up to 600.0 ft MSL 200.0 ft/NM							

Flyability

Flight Type:	SID
Selected Airport:	KMCO [IFPA]
Climb Gradient:	500.0 ft/NM up to 600.0 ft MSL 200.0 ft/NM
Speeds:	130 at the Runway DER
	145 at the end of the VA or VI leg
	200 Ground Speed to 11000 FT
	240 Ground Speed to 18000 FT
	260 Ground Speed to 24000 FT
	340 Ground Speed above 24000 FT
Descent During a Turn:	Allowed
VNAV Mode:	Flight Plan

DME DME Assessment Results for FSHUN3 path KMCO:RW17L:DER_BAAIT

DME/DME	
RNP:	RNP 2
Flight Mode:	Manual
Line of Sight (DTED Level 0 Max):	Evaluated
Inertial Drift:	Enabled
Initial Drift:	0.558 NM
INS Drift Rate:	8.0 NM/Hour
Range Mode:	OSV
RNP Edges:	Evaluated
Min DME Range:	3.0 NM
DME Types:	DME, VOR-DME, VORTAC
DME Include Angles:	30 to 150
Critical DMEs:	Not Allowed
DoD Facilities:	Not included
Foreign Facilities:	Included
High DMEs:	Included
Low DMEs:	Included
Terminal DMEs:	Included
Flight Check DMEs:	Not selected
Higher Altitudes:	Not Evaluated
Near Maximum Altitude:	Not Evaluated
Automatic ESVs:	Not enabled
Disabled DMEs:	None

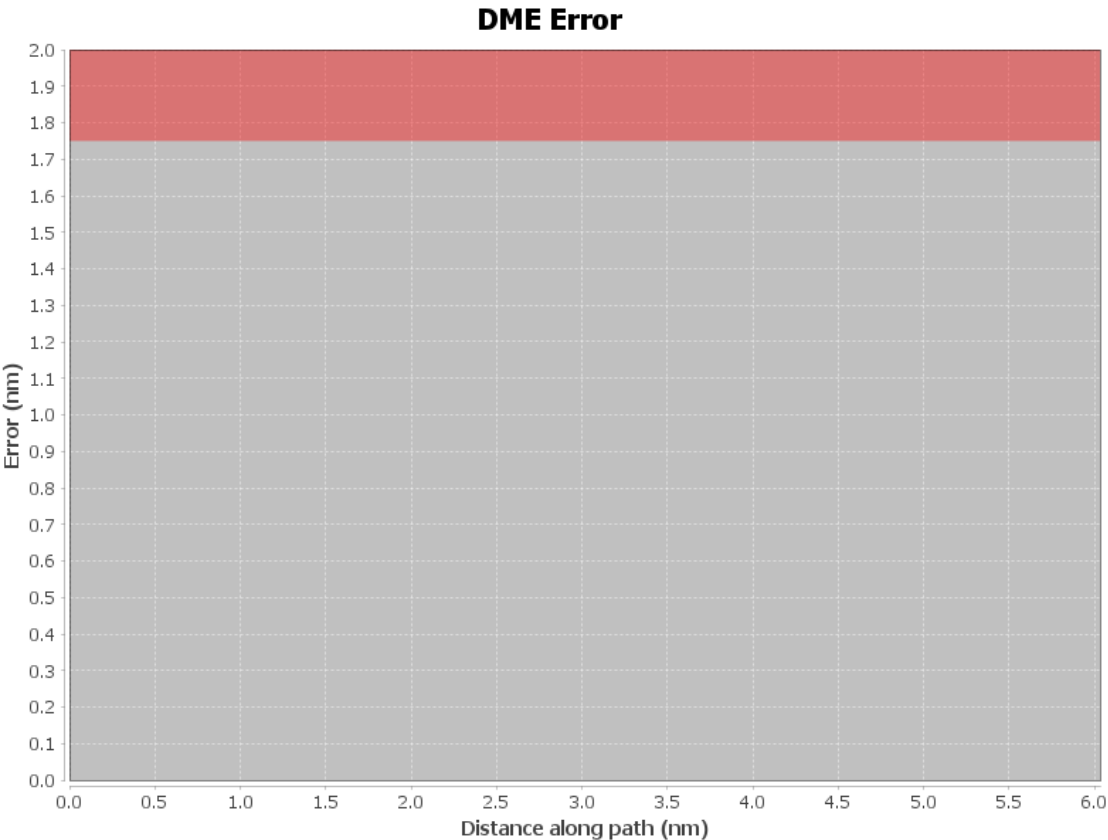
DME/DME (Continued)										
DMEs Used										
#	Name	Lat/Lon	MAGVAR	Range	Type	Source	Critical	Status	Time	Distance

Flight Check DME Selection						
Distance [NM]	Selected DMEs					Alternate
0.0						

Inertial Drift Segments			
#	Start Location	End Location	Length [NM]
1	N28° 25' 06.080", W081° 16' 56.358"	N28° 19' 58.748", W081° 19' 32.518"	5.7194

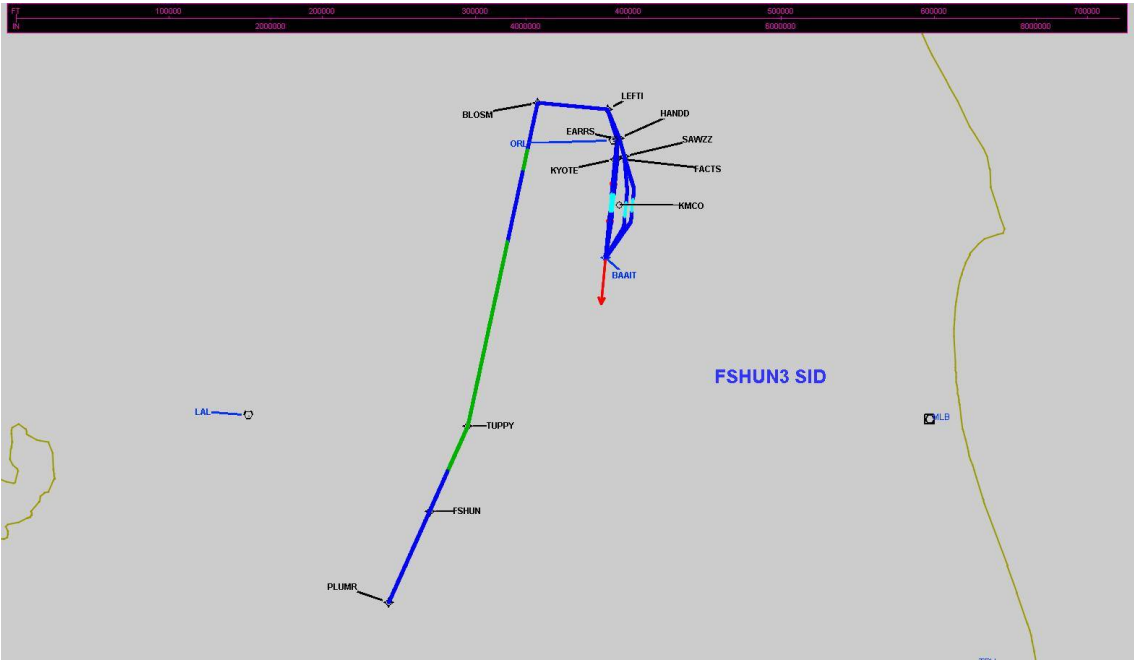
Available DMEs by Waypoints		
Waypoint Before	Waypoint After	DME List
KMCO:RW17L:DER	BAAIT	

User Data Files								
#	File Name							
None								
User DMEs								
#	Name	Lat/Lon	MAGVAR	Range	Elevation [ft]	Frequency	Replaces	Status
1	OCF FAA 714002-18 OCF [IFPA]	N29° 10' 38.918", W082° 13' 34.802"	0.0 E	40	78.3	113.7	OCF FAA 714002-18	
ESV:		Bearing [True]: 117.0° to 180.0° Bearing [Mag]: 117.0° to 180.0°				Arc Distance: Out to 80.0 NM Altitude: 4000.0 to 20000.0 ft		
2	OMN FAA 694106-20 OMN [IFPA]	N29° 18' 11.707", W081° 06' 45.706"	0.0 E	130	18.8	112.6	OMN FAA 694106-20	
ESV:		Bearing [True]: 190.0° to 255.0° Bearing [Mag]: 190.0° to 255.0°				Arc Distance: Out to 72.0 NM Altitude: 3000.0 to 18000.0 ft		



DME DME Assessment Results for FSHUN3 path KMCO:RW17L:DER_BAAIT

Graphic Depiction 1



DME DME Assessment Results for FSHUN3 path KMCO:RW17R:DER_BAAIT

Results Summary

Flyability:	Completed
DME/DME:	Completed - No Critical DMEs
Name:	Miles CTR Carpenter
Project File:	C:\Users\Miles CTR Carpenter\Desktop\FLMP May 2022 DME Evaluations\KMCO\KMCO FSHUN3 SID DME 20211109_1541 EST\KMCO FSHUN3 SID DME_211109.tgs
Output File:	C:\Users\Miles CTR Carpenter\Desktop\FLMP May 2022 DME Evaluations\KMCO\KMCO [IFPA] FSHUN3 20211210_1500 EST\KMCO-RW17R-DER_BAAIT\KMCO FSHUN3 SID KMCO RW17R BAAIT 20211210_1500 EST.pdf
Procedure Name:	FSHUN3
Software: DmeDmePlugin:	6.4.1
Date/Time:	12/10/2021 15:00 EST
Databases:	DTED MAX

Failures

No Failures

Warnings

No Warnings

Notes For Flight Check

None

Flight Plan

Name	Type	Lat/Lon	Altitude (ft)	VNAV Mode	Ground Speed (kts)	Turn Type	Leg Type
KMCO:RW17R:DER	WP	N28° 24' 29.195", W081° 17' 44.133"	86.7	VNAV	130	FLY_BY	TF
BAAIT	WP	N28° 19' 58.748", W081° 19' 32.518"	1500	VNAV	200	FLY_BY	TF
Climb Gradient: 500.0 ft/NM up to 600.0 ft MSL 200.0 ft/NM							

Flyability

Flight Type:	SID
Selected Airport:	KMCO [IFPA]
Climb Gradient:	500.0 ft/NM up to 600.0 ft MSL 200.0 ft/NM
Speeds:	130 at the Runway DER
	145 at the end of the VA or VI leg
	200 Ground Speed to 11000 FT
	240 Ground Speed to 18000 FT
	260 Ground Speed to 24000 FT
	340 Ground Speed above 24000 FT
Descent During a Turn:	Allowed
VNAV Mode:	Flight Plan

DME DME Assessment Results for FSHUN3 path KMCO:RW17R:DER_BAAIT

DME/DME	
RNP:	RNP 2
Flight Mode:	Manual
Line of Sight (DTED Level 0 Max):	Evaluated
Inertial Drift:	Enabled
Initial Drift:	0.558 NM
INS Drift Rate:	8.0 NM/Hour
Range Mode:	OSV
RNP Edges:	Evaluated
Min DME Range:	3.0 NM
DME Types:	DME, VOR-DME, VORTAC
DME Include Angles:	30 to 150
Critical DMEs:	Not Allowed
DoD Facilities:	Not included
Foreign Facilities:	Included
High DMEs:	Included
Low DMEs:	Included
Terminal DMEs:	Included
Flight Check DMEs:	Not selected
Higher Altitudes:	Not Evaluated
Near Maximum Altitude:	Not Evaluated
Automatic ESVs:	Not enabled
Disabled DMEs:	None

DME/DME (Continued)										
DMEs Used										
#	Name	Lat/Lon	MAGVAR	Range	Type	Source	Critical	Status	Time	Distance

Flight Check DME Selection						
Distance [NM]	Selected DMEs					Alternate
0.0						

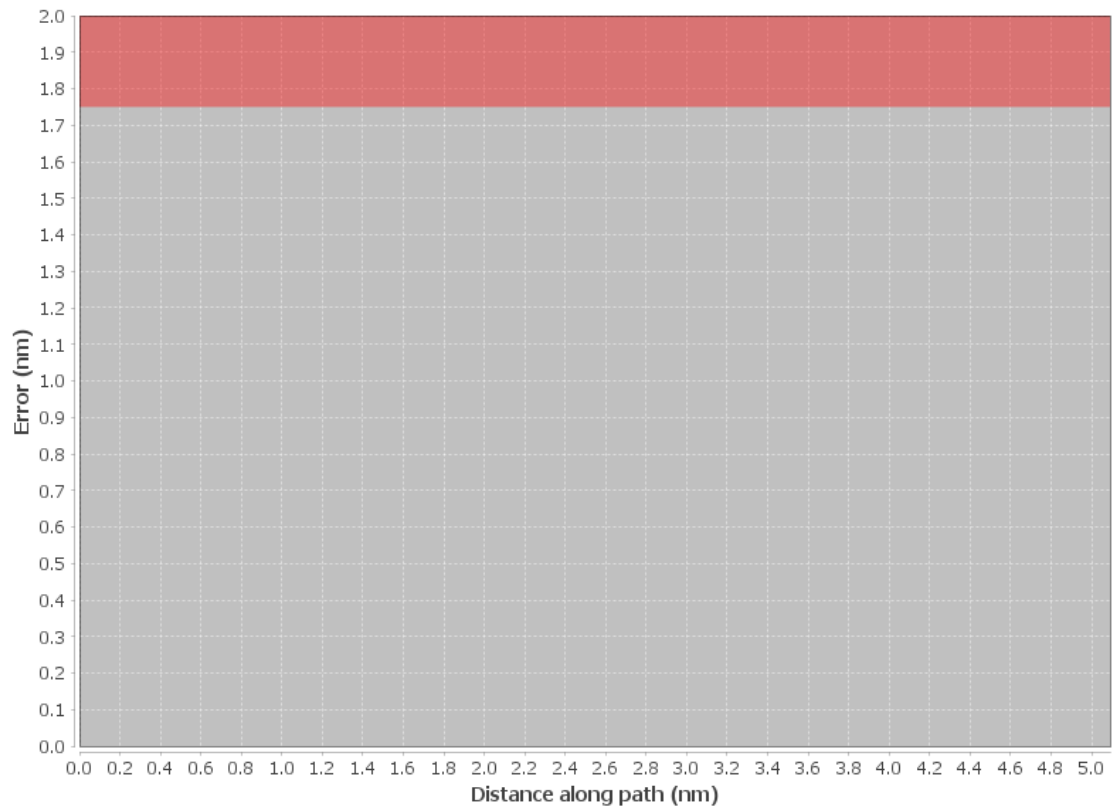
Inertial Drift Segments			
#	Start Location	End Location	Length [NM]
1	N28° 24' 27.066", W081° 17' 44.111"	N28° 19' 58.748", W081° 19' 32.518"	4.8156

Available DMEs by Waypoints		
Waypoint Before	Waypoint After	DME List
KMCO:RW17R:DER	BAAIT	

User Data Files								
#	File Name							
None								
User DMEs								
#	Name	Lat/Lon	MAGVAR	Range	Elevation [ft]	Frequency	Replaces	Status
1	OCF FAA 714002-18 OCF [IFPA]	N29° 10' 38.918", W082° 13' 34.802"	0.0 E	40	78.3	113.7	OCF FAA 714002-18	
ESV:		Bearing [True]: 117.0° to 180.0° Bearing [Mag]: 117.0° to 180.0°				Arc Distance: Out to 80.0 NM Altitude: 4000.0 to 20000.0 ft		
2	OMN FAA 694106-20 OMN [IFPA]	N29° 18' 11.707", W081° 06' 45.706"	0.0 E	130	18.8	112.6	OMN FAA 694106-20	
ESV:		Bearing [True]: 190.0° to 255.0° Bearing [Mag]: 190.0° to 255.0°				Arc Distance: Out to 72.0 NM Altitude: 3000.0 to 18000.0 ft		

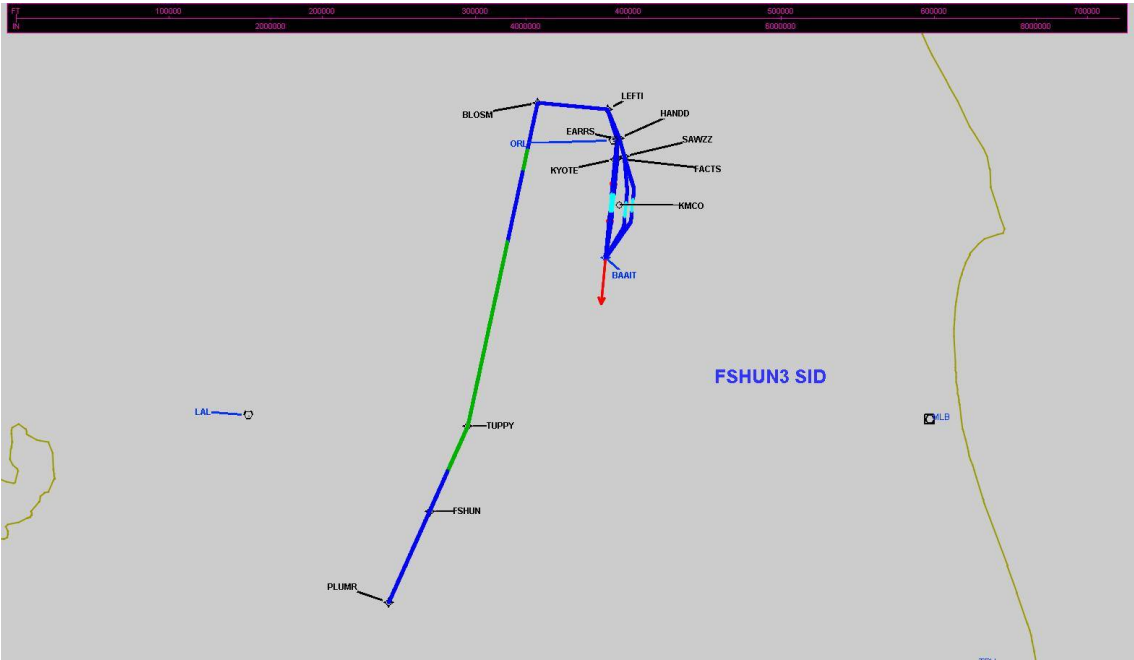
DME DME Assessment Results for FSHUN3 path KMCO:RW17R:DER_BAAIT

DME Error



DME DME Assessment Results for FSHUN3 path KMCO:RW17R:DER_BAAIT

Graphic Depiction 1



DME DME Assessment Results for FSHUN3 path KMCO:RW18L:DER_BAAIT

Results Summary

Flyability:	Completed
DME/DME:	Completed - No Critical DMEs
Name:	Miles CTR Carpenter
Project File:	C:\Users\Miles CTR Carpenter\Desktop\FLMP May 2022 DME Evaluations\KMCO\KMCO FSHUN3 SID DME 20211109_1541 EST\KMCO FSHUN3 SID DME_211109.tgs
Output File:	C:\Users\Miles CTR Carpenter\Desktop\FLMP May 2022 DME Evaluations\KMCO\KMCO [IFPA] FSHUN3 20211210_1500 EST\KMCO-RW18L-DER_BAAIT\KMCO FSHUN3 SID KMCO RW18L BAAIT 20211210_1500 EST.pdf
Procedure Name:	FSHUN3
Software: DmeDmePlugin:	6.4.1
Date/Time:	12/10/2021 15:00 EST
Databases:	DTED MAX

Failures

No Failures

Warnings

No Warnings

Notes For Flight Check

None

Flight Plan

Name	Type	Lat/Lon	Altitude (ft)	VNAV Mode	Ground Speed (kts)	Turn Type	Leg Type
KMCO:RW18L:DER	WP	N28° 24' 55.147", W081° 19' 19.036"	91	VNAV	130	FLY_OVER	TF
BAAIT	WP	N28° 19' 58.748", W081° 19' 32.518"	1500	VNAV	200	FLY_BY	TF
Climb Gradient: 500.0 ft/NM up to 600.0 ft MSL 200.0 ft/NM							

Flyability

Flight Type:	SID
Selected Airport:	KMCO [IFPA]
Climb Gradient:	500.0 ft/NM up to 600.0 ft MSL 200.0 ft/NM
Speeds:	130 at the Runway DER
	145 at the end of the VA or VI leg
	200 Ground Speed to 11000 FT
	240 Ground Speed to 18000 FT
	260 Ground Speed to 24000 FT
	340 Ground Speed above 24000 FT
Descent During a Turn:	Allowed
VNAV Mode:	Flight Plan

DME DME Assessment Results for FSHUN3 path KMCO:RW18L:DER_BAAIT

DME/DME	
RNP:	RNP 2
Flight Mode:	Manual
Line of Sight (DTED Level 0 Max):	Evaluated
Inertial Drift:	Enabled
Initial Drift:	0.558 NM
INS Drift Rate:	8.0 NM/Hour
Range Mode:	OSV
RNP Edges:	Evaluated
Min DME Range:	3.0 NM
DME Types:	DME, VOR-DME, VORTAC
DME Include Angles:	30 to 150
Critical DMEs:	Not Allowed
DoD Facilities:	Not included
Foreign Facilities:	Included
High DMEs:	Included
Low DMEs:	Included
Terminal DMEs:	Included
Flight Check DMEs:	Not selected
Higher Altitudes:	Not Evaluated
Near Maximum Altitude:	Not Evaluated
Automatic ESVs:	Not enabled
Disabled DMEs:	None

DME/DME (Continued)										
DMEs Used										
#	Name	Lat/Lon	MAGVAR	Range	Type	Source	Critical	Status	Time	Distance

Flight Check DME Selection						
Distance [NM]	Selected DMEs					Alternate
0.0						

Inertial Drift Segments			
#	Start Location	End Location	Length [NM]
1	N28° 24' 53.035", W081° 19' 19.013"	N28° 19' 58.748", W081° 19' 32.518"	4.9001

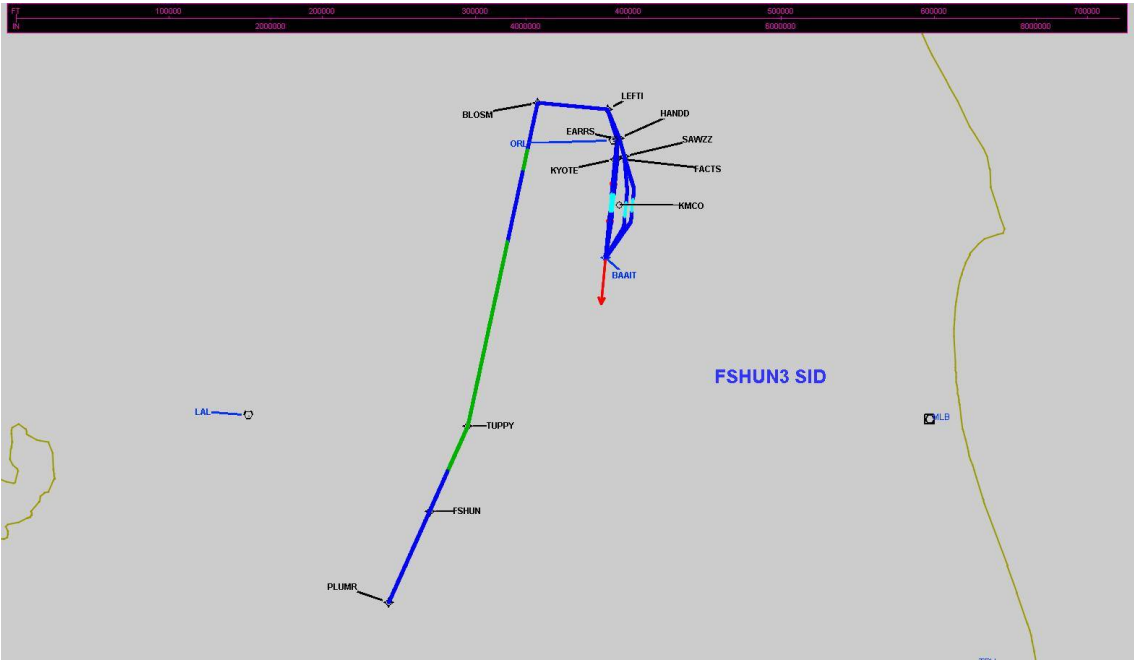
Available DMEs by Waypoints		
Waypoint Before	Waypoint After	DME List
KMCO:RW18L:DER	BAAIT	

User Data Files								
#	File Name							
None								
User DMEs								
#	Name	Lat/Lon	MAGVAR	Range	Elevation [ft]	Frequency	Replaces	Status
1	OCF FAA 714002-18 OCF [IFPA]	N29° 10' 38.918", W082° 13' 34.802"	0.0 E	40	78.3	113.7	OCF FAA 714002-18	
ESV:		Bearing [True]: 117.0° to 180.0° Bearing [Mag]: 117.0° to 180.0°				Arc Distance: Out to 80.0 NM Altitude: 4000.0 to 20000.0 ft		
2	OMN FAA 694106-20 OMN [IFPA]	N29° 18' 11.707", W081° 06' 45.706"	0.0 E	130	18.8	112.6	OMN FAA 694106-20	
ESV:		Bearing [True]: 190.0° to 255.0° Bearing [Mag]: 190.0° to 255.0°				Arc Distance: Out to 72.0 NM Altitude: 3000.0 to 18000.0 ft		



DME DME Assessment Results for FSHUN3 path KMCO:RW18L:DER_BAAIT

Graphic Depiction 1



DME DME Assessment Results for FSHUN3 path KMCO:RW18R:DER_BAAIT

Results Summary

Flyability:	Completed
DME/DME:	Completed - No Critical DMEs
Name:	Miles CTR Carpenter
Project File:	C:\Users\Miles CTR Carpenter\Desktop\FLMP May 2022 DME Evaluations\KMCO\KMCO FSHUN3 SID DME 20211109_1541 EST\KMCO FSHUN3 SID DME_211109.tgs
Output File:	C:\Users\Miles CTR Carpenter\Desktop\FLMP May 2022 DME Evaluations\KMCO\KMCO [IFPA] FSHUN3 20211210_1500 EST\KMCO-RW18R-DER_BAAIT\KMCO FSHUN3 SID KMCO RW18R BAAIT 20211210_1500 EST.pdf
Procedure Name:	FSHUN3
Software: DmeDmePlugin:	6.4.1
Date/Time:	12/10/2021 15:00 EST
Databases:	DTED MAX

Failures

No Failures

Warnings

No Warnings

Notes For Flight Check

None

Flight Plan

Name	Type	Lat/Lon	Altitude (ft)	VNAV Mode	Ground Speed (kts)	Turn Type	Leg Type
KMCO:RW18R:DER	WP	N28° 24' 55.007", W081° 19' 35.829"	91.1	VNAV	130	FLY_OVER	TF
BAAIT	WP	N28° 19' 58.748", W081° 19' 32.518"	1500	VNAV	200	FLY_BY	TF
Climb Gradient: 500.0 ft/NM up to 600.0 ft MSL 200.0 ft/NM							

Flyability

Flight Type:	SID
Selected Airport:	KMCO [IFPA]
Climb Gradient:	500.0 ft/NM up to 600.0 ft MSL 200.0 ft/NM
Speeds:	130 at the Runway DER
	145 at the end of the VA or VI leg
	200 Ground Speed to 11000 FT
	240 Ground Speed to 18000 FT
	260 Ground Speed to 24000 FT
	340 Ground Speed above 24000 FT
Descent During a Turn:	Allowed
VNAV Mode:	Flight Plan

DME DME Assessment Results for FSHUN3 path KMCO:RW18R:DER_BAAIT

DME/DME	
RNP:	RNP 2
Flight Mode:	Manual
Line of Sight (DTED Level 0 Max):	Evaluated
Inertial Drift:	Enabled
Initial Drift:	0.558 NM
INS Drift Rate:	8.0 NM/Hour
Range Mode:	OSV
RNP Edges:	Evaluated
Min DME Range:	3.0 NM
DME Types:	DME, VOR-DME, VORTAC
DME Include Angles:	30 to 150
Critical DMEs:	Not Allowed
DoD Facilities:	Not included
Foreign Facilities:	Included
High DMEs:	Included
Low DMEs:	Included
Terminal DMEs:	Included
Flight Check DMEs:	Not selected
Higher Altitudes:	Not Evaluated
Near Maximum Altitude:	Not Evaluated
Automatic ESVs:	Not enabled
Disabled DMEs:	None

DME/DME (Continued)										
DMEs Used										
#	Name	Lat/Lon	MAGVAR	Range	Type	Source	Critical	Status	Time	Distance

Flight Check DME Selection						
Distance [NM]	Selected DMEs					Alternate
0.0						

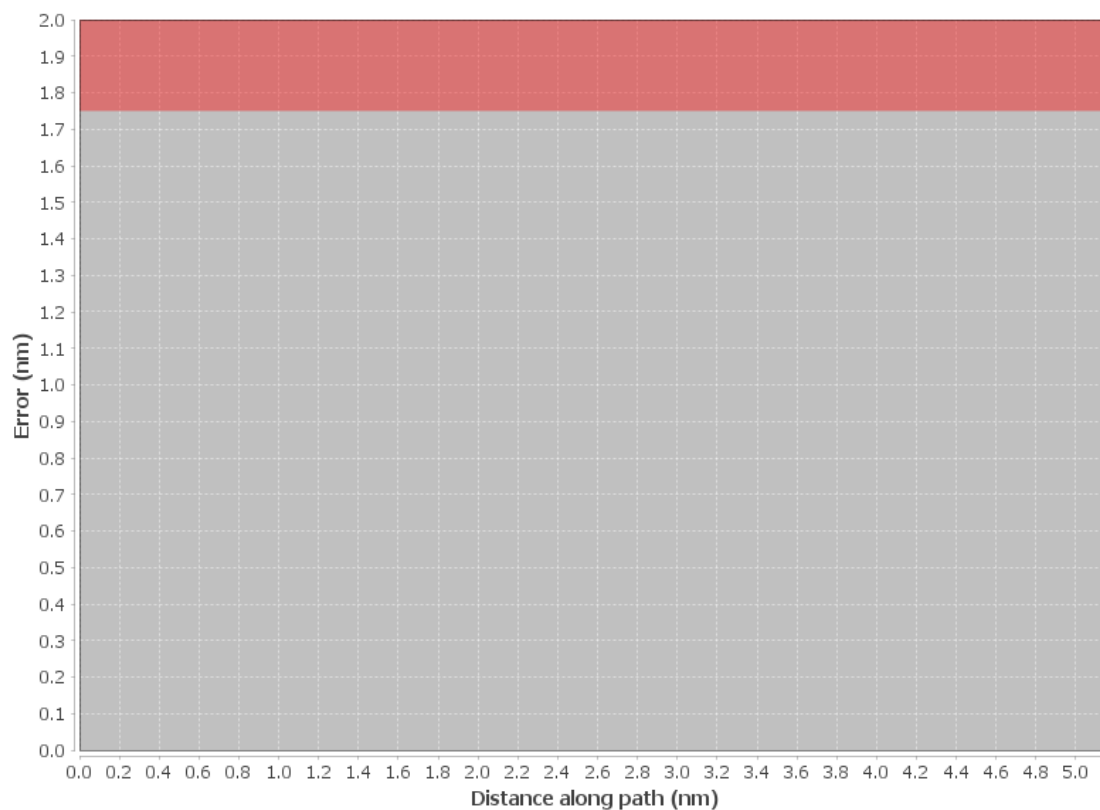
Inertial Drift Segments			
#	Start Location	End Location	Length [NM]
1	N28° 24' 52.896", W081° 19' 35.807"	N28° 19' 58.748", W081° 19' 32.518"	4.8924

Available DMEs by Waypoints		
Waypoint Before	Waypoint After	DME List
KMCO:RW18R:DER	BAAIT	

User Data Files								
#	File Name							
None								
User DMEs								
#	Name	Lat/Lon	MAGVAR	Range	Elevation [ft]	Frequency	Replaces	Status
1	OCF FAA 714002-18 OCF [IFPA]	N29° 10' 38.918", W082° 13' 34.802"	0.0 E	40	78.3	113.7	OCF FAA 714002-18	
ESV:		Bearing [True]: 117.0° to 180.0° Bearing [Mag]: 117.0° to 180.0°				Arc Distance: Out to 80.0 NM Altitude: 4000.0 to 20000.0 ft		
2	OMN FAA 694106-20 OMN [IFPA]	N29° 18' 11.707", W081° 06' 45.706"	0.0 E	130	18.8	112.6	OMN FAA 694106-20	
ESV:		Bearing [True]: 190.0° to 255.0° Bearing [Mag]: 190.0° to 255.0°				Arc Distance: Out to 72.0 NM Altitude: 3000.0 to 18000.0 ft		

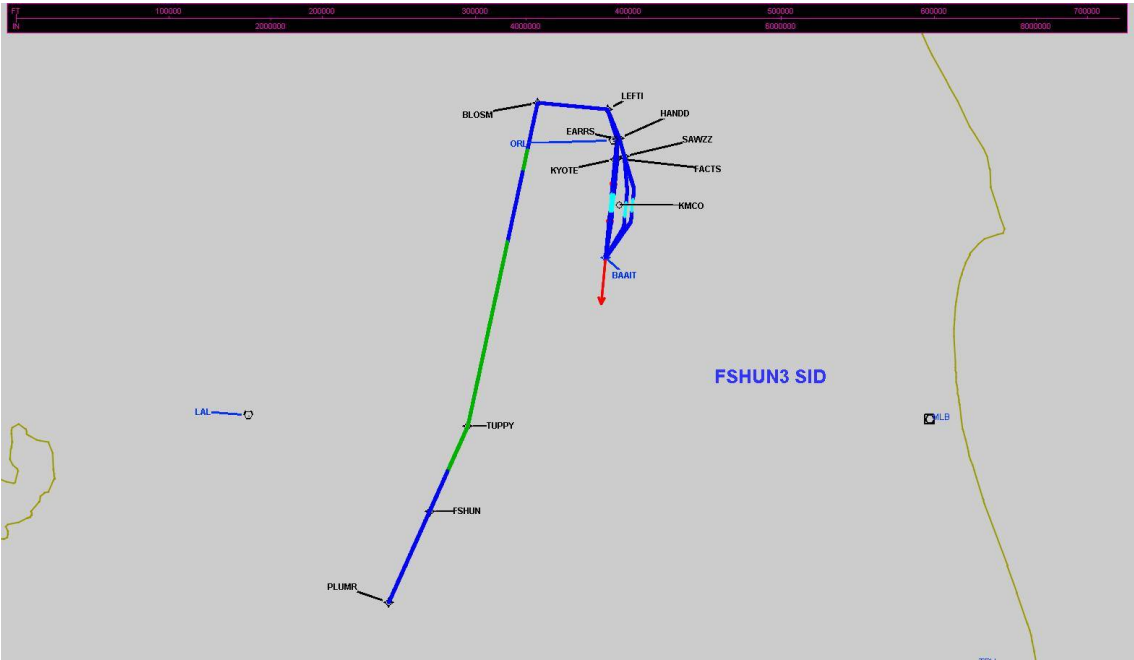
DME DME Assessment Results for FSHUN3 path KMCO:RW18R:DER_BAAIT

DME Error



DME DME Assessment Results for FSHUN3 path KMCO:RW18R:DER_BAAIT

Graphic Depiction 1



DME DME Assessment Results for FSHUN3 path KMCO:RW35L:DER_PLUMR

Results Summary

Flyability:	Completed
DME/DME:	Completed - No Critical DMEs
Name:	Miles CTR Carpenter
Project File:	C:\Users\Miles CTR Carpenter\Desktop\FLMP May 2022 DME Evaluations\KMCO\KMCO FSHUN3 SID DME 20211109_1541 EST\KMCO FSHUN3 SID DME_211109.tgs
Output File:	C:\Users\Miles CTR Carpenter\Desktop\FLMP May 2022 DME Evaluations\KMCO\KMCO [IFPA] FSHUN3 20211210_1500 EST\KMCO-RW35L-DER_PLUMR\KMCO FSHUN3 SID KMCO RW35L PLUMR 20211210_1500 EST.pdf
Procedure Name:	FSHUN3
Software: DmeDmePlugin:	6.4.1
Date/Time:	12/10/2021 15:00 EST
Databases:	DTED MAX

Failures

No Failures

Warnings

No Warnings

Notes For Flight Check

None

Flight Plan

Name	Type	Lat/Lon	Altitude (ft)	VNAV Mode	Ground Speed (kts)	Turn Type	Leg Type
KMCO:RW35L:DER	WP	N28° 26' 08.203", W081° 17' 45.166"	90.1	VNAV	130	FLY_BY	TF
SAWZZ	WP	N28° 31' 00.600", W081° 18' 33.910"	2000	VNAV	200	FLY_BY	TF
HANDD	WP	N28° 32' 54.380", W081° 19' 23.950"	2500	VNAV	230	FLY_BY	TF
LEFTI	WP	N28° 35' 51.040", W081° 21' 12.480"	2500	VNAV	230	FLY_BY	TF
BLOSM	WP	N28° 35' 46.290", W081° 29' 46.320"	2500	VNAV	230	FLY_BY	TF
TUPPY	WP	N28° 00' 28.210", W081° 34' 06.940"	6000	VNAV	200	FLY_BY	TF
FSHUN	WP	N27° 50' 57.110", W081° 37' 40.010"	6000	VNAV	200	FLY_BY	TF
PLUMR	WP	N27° 40' 45.950", W081° 41' 27.300"	8000	VNAV	200	FLY_BY	TF

Climb Gradient:
500.0 ft/NM up to 600.0 ft MSL
200.0 ft/NM

Flyability

Flight Type:	SID
Selected Airport:	KMCO [IFPA]
Climb Gradient:	500.0 ft/NM up to 600.0 ft MSL 200.0 ft/NM
Speeds:	130 at the Runway DER
	145 at the end of the VA or VI leg
	200 Ground Speed to 11000 FT
	240 Ground Speed to 18000 FT
	260 Ground Speed to 24000 FT
	340 Ground Speed above 24000 FT
Descent During a Turn:	Allowed
VNAV Mode:	Flight Plan

DME DME Assessment Results for FSHUN3 path KMCO:RW35L:DER_PLUMR

DME/DME	
RNP:	RNP 2
Flight Mode:	Manual
Line of Sight (DTED Level 0 Max):	Evaluated
Inertial Drift:	Enabled
Initial Drift:	0.558 NM
INS Drift Rate:	8.0 NM/Hour
Range Mode:	OSV
RNP Edges:	Evaluated
Min DME Range:	3.0 NM
DME Types:	DME, VOR-DME, VORTAC
DME Include Angles:	30 to 150
Critical DMEs:	Not Allowed
DoD Facilities:	Not included
Foreign Facilities:	Included
High DMEs:	Included
Low DMEs:	Included
Terminal DMEs:	Included
Flight Check DMEs:	Not selected
Higher Altitudes:	Not Evaluated
Near Maximum Altitude:	Not Evaluated
Automatic ESVs:	Not enabled
Disabled DMEs:	None

DME/DME (Continued)										
DMEs Used										
#	Name	Lat/Lon	MAGVAR	Range	Type	Source	Critical	Status	Time	Distance
1	LAL	N27° 59' 10.310", W082° 00' 50.056"	1.0 E	130	H	IFPA	NO	Enabled	32.9 %	34.4 %
2	OMN	N29° 18' 11.707", W081° 06' 45.706"	0.0 E	130	H	IFPA	NO	Enabled	15.2 %	16.3 %
3	OCF	N29° 10' 38.918", W082° 13' 34.802"	0.0 E	40	L	IFPA	NO	Enabled	24.6 %	26.5 %
4	ORL	N28° 32' 33.802", W081° 20' 06.053"	0.0 E	130	H	IFPA	NO	Enabled	35.9 %	37.6 %

Flight Check DME Selection						
Distance [NM]	Selected DMEs					Alternate
0.0						
22.9	OMN	ORL				
25.4						
33.0	OCF	LAL	ORL	OMN		
42.8	OCF	LAL	ORL			
52.7	LAL	ORL				
58.5						

Inertial Drift Segments			
#	Start Location	End Location	Length [NM]
1	N28° 26' 10.318", W081° 17' 45.188"	N28° 30' 41.001", W081° 30' 24.064"	22.9105
2	N28° 28' 15.986", W081° 30' 41.972"	N28° 20' 38.036", W081° 31' 38.433"	7.6574
3	N27° 55' 28.474", W081° 35' 58.850"	N27° 40' 45.950", W081° 41' 27.300"	15.462

DME DME Assessment Results for FSHUN3 path KMCO:RW35L:DER_PLUMR

Available DMEs by Waypoints

Waypoint Before	Waypoint After	DME List
KMCO:RW35L:DER	SAWZZ	
SAWZZ	HANDD	
HANDD	LEFTI	
LEFTI	BLOSM	
BLOSM	TUPPY	OMN, OCF, LAL, ORL
TUPPY	FSHUN	LAL, ORL
FSHUN	PLUMR	

User Data Files

#	File Name
None	

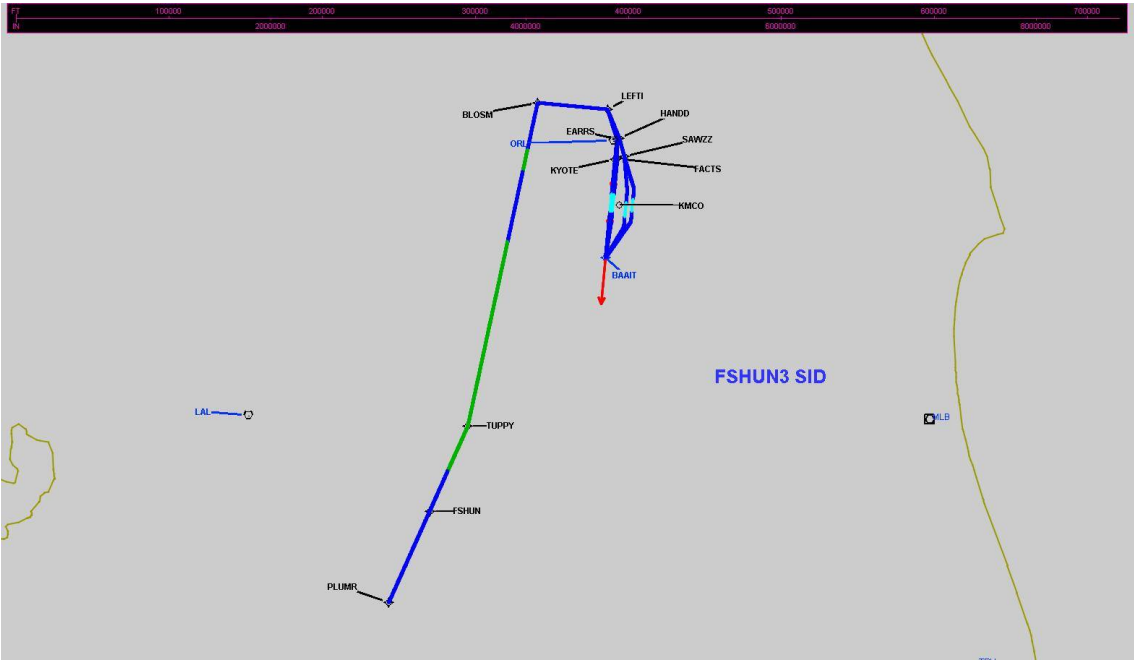
User DMEs

#	Name	Lat/Lon	MAGVAR	Range	Elevation [ft]	Frequency	Replaces	Status
1	OCF FAA 714002-18 OCF [IFPA]	N29° 10' 38.918", W082° 13' 34.802"	0.0 E	40	78.3	113.7	OCF FAA 714002-18	
ESV:		Bearing [True]: 117.0° to 180.0° Bearing [Mag]: 117.0° to 180.0°				Arc Distance: Out to 80.0 NM Altitude: 4000.0 to 20000.0 ft		
2	OMN FAA 694106-20 OMN [IFPA]	N29° 18' 11.707", W081° 06' 45.706"	0.0 E	130	18.8	112.6	OMN FAA 694106-20	
ESV:		Bearing [True]: 190.0° to 255.0° Bearing [Mag]: 190.0° to 255.0°				Arc Distance: Out to 72.0 NM Altitude: 3000.0 to 18000.0 ft		



DME DME Assessment Results for FSHUN3 path KMCO:RW35L:DER_PLUMR

Graphic Depiction 1



DME DME Assessment Results for FSHUN3 path KMCO:RW35R:DER_SAWZZ

Results Summary

Flyability:	Completed
DME/DME:	Completed - No Critical DMEs
Name:	Miles CTR Carpenter
Project File:	C:\Users\Miles CTR Carpenter\Desktop\FLMP May 2022 DME Evaluations\KMCO\KMCO FSHUN3 SID DME 20211109_1541 EST\KMCO FSHUN3 SID DME_211109.tgs
Output File:	C:\Users\Miles CTR Carpenter\Desktop\FLMP May 2022 DME Evaluations\KMCO\KMCO [IFPA] FSHUN3 20211210_1500 EST\KMCO-RW35R-DER_SAWZZ\KMCO FSHUN3 SID KMCO RW35R SAWZZ 20211210_1500 EST.pdf
Procedure Name:	FSHUN3
Software: DmeDmePlugin:	6.4.1
Date/Time:	12/10/2021 15:00 EST
Databases:	DTED MAX

Failures

No Failures

Warnings

No Warnings

Notes For Flight Check

None

Flight Plan

Name	Type	Lat/Lon	Altitude (ft)	VNAV Mode	Ground Speed (kts)	Turn Type	Leg Type
KMCO:RW35R:DER	WP	N28° 26' 37.308", W081° 16' 57.292"	89.7	VNAV	130	FLY_BY	TF
SAWZZ	WP	N28° 31' 00.600", W081° 18' 33.910"	2000	VNAV	200	FLY_BY	TF
Climb Gradient: 500.0 ft/NM up to 600.0 ft MSL 200.0 ft/NM							

Flyability

Flight Type:	SID
Selected Airport:	KMCO [IFPA]
Climb Gradient:	500.0 ft/NM up to 600.0 ft MSL 200.0 ft/NM
Speeds:	130 at the Runway DER
	145 at the end of the VA or VI leg
	200 Ground Speed to 11000 FT
	240 Ground Speed to 18000 FT
	260 Ground Speed to 24000 FT
	340 Ground Speed above 24000 FT
Descent During a Turn:	Allowed
VNAV Mode:	Flight Plan

DME DME Assessment Results for FSHUN3 path KMCO:RW35R:DER_SAWZZ

DME/DME	
RNP:	RNP 2
Flight Mode:	Manual
Line of Sight (DTED Level 0 Max):	Evaluated
Inertial Drift:	Enabled
Initial Drift:	0.558 NM
INS Drift Rate:	8.0 NM/Hour
Range Mode:	OSV
RNP Edges:	Evaluated
Min DME Range:	3.0 NM
DME Types:	DME, VOR-DME, VORTAC
DME Include Angles:	30 to 150
Critical DMEs:	Not Allowed
DoD Facilities:	Not included
Foreign Facilities:	Included
High DMEs:	Included
Low DMEs:	Included
Terminal DMEs:	Included
Flight Check DMEs:	Not selected
Higher Altitudes:	Not Evaluated
Near Maximum Altitude:	Not Evaluated
Automatic ESVs:	Not enabled
Disabled DMEs:	None

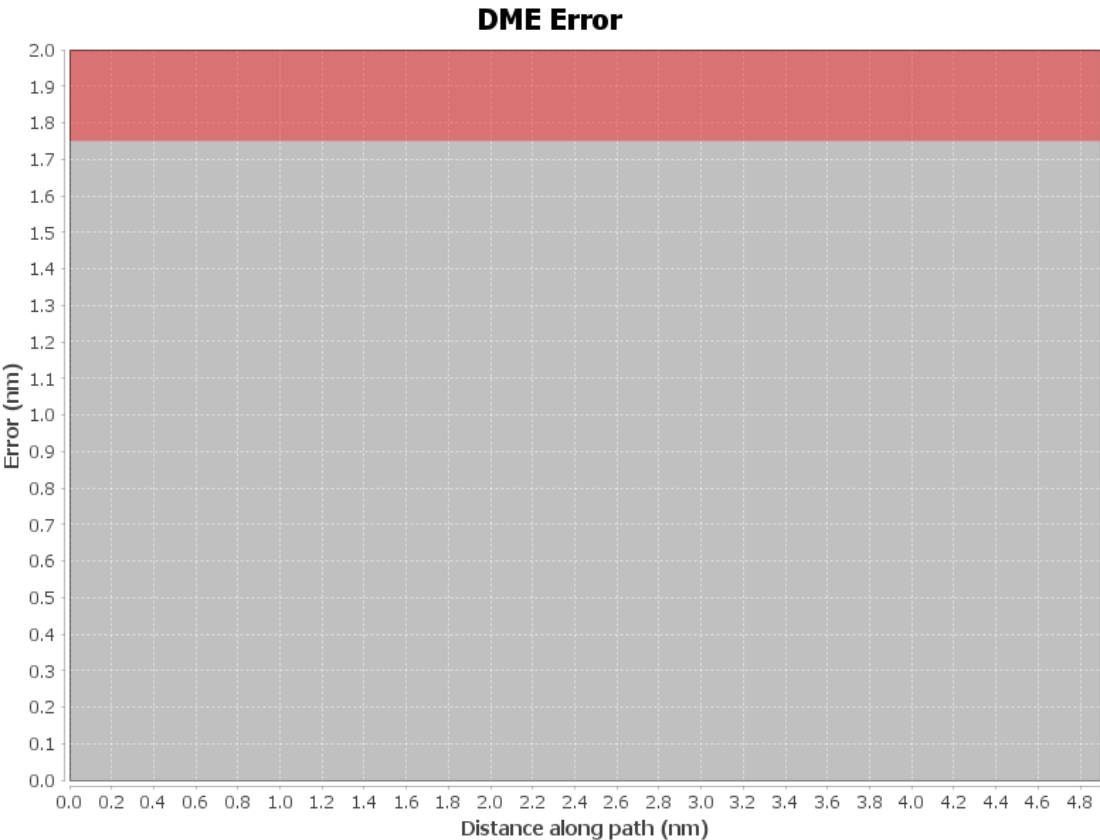
DME/DME (Continued)										
DMEs Used										
#	Name	Lat/Lon	MAGVAR	Range	Type	Source	Critical	Status	Time	Distance

Flight Check DME Selection						
Distance [NM]	Selected DMEs					Alternate
0.0						

Inertial Drift Segments			
#	Start Location	End Location	Length [NM]
1	N28° 26' 39.425", W081° 16' 57.314"	N28° 31' 00.600", W081° 18' 33.910"	4.6282

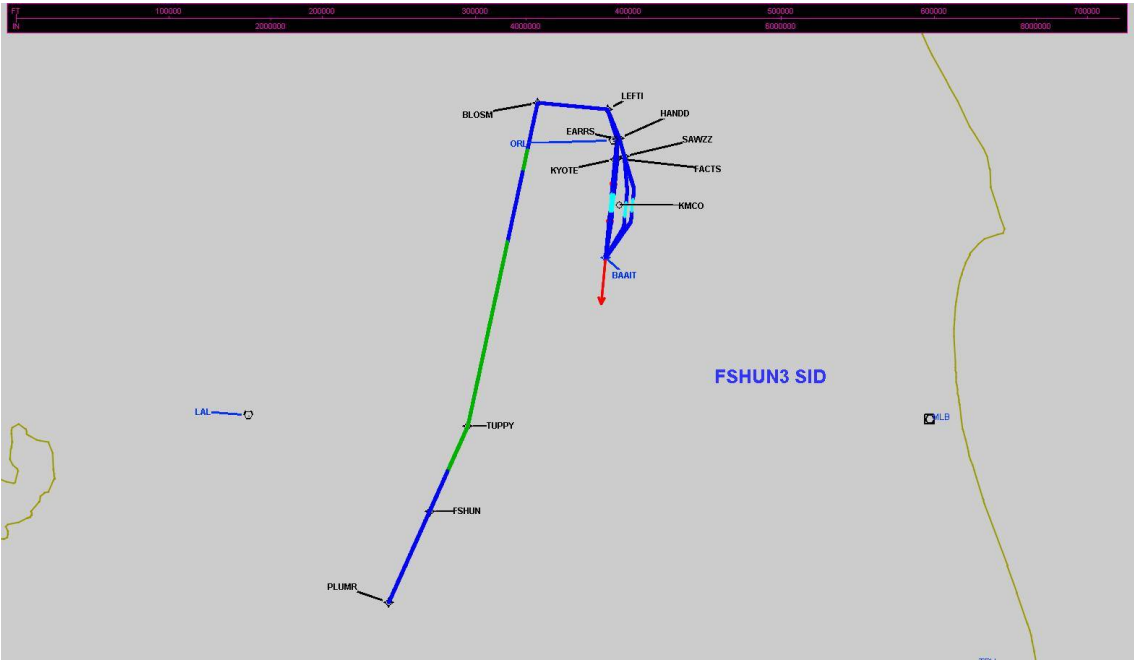
Available DMEs by Waypoints		
Waypoint Before	Waypoint After	DME List
KMCO:RW35R:DER	SAWZZ	

User Data Files								
#	File Name							
None								
User DMEs								
#	Name	Lat/Lon	MAGVAR	Range	Elevation [ft]	Frequency	Replaces	Status
1	OCF FAA 714002-18 OCF [IFPA]	N29° 10' 38.918", W082° 13' 34.802"	0.0 E	40	78.3	113.7	OCF FAA 714002-18	
ESV:		Bearing [True]: 117.0° to 180.0° Bearing [Mag]: 117.0° to 180.0°				Arc Distance: Out to 80.0 NM Altitude: 4000.0 to 20000.0 ft		
2	OMN FAA 694106-20 OMN [IFPA]	N29° 18' 11.707", W081° 06' 45.706"	0.0 E	130	18.8	112.6	OMN FAA 694106-20	
ESV:		Bearing [True]: 190.0° to 255.0° Bearing [Mag]: 190.0° to 255.0°				Arc Distance: Out to 72.0 NM Altitude: 3000.0 to 18000.0 ft		



DME DME Assessment Results for FSHUN3 path KMCO:RW35R:DER_SAWZZ

Graphic Depiction 1



DME DME Assessment Results for FSHUN3 path KMCO:RW36L:DER_LEFTI

Results Summary

Flyability:	Completed
DME/DME:	Completed - No Critical DMEs
Name:	Miles CTR Carpenter
Project File:	C:\Users\Miles CTR Carpenter\Desktop\FLMP May 2022 DME Evaluations\KMCO\KMCO FSHUN3 SID DME 20211109_1541 EST\KMCO FSHUN3 SID DME_211109.tgs
Output File:	C:\Users\Miles CTR Carpenter\Desktop\FLMP May 2022 DME Evaluations\KMCO\KMCO [IFPA] FSHUN3 20211210_1500 EST\KMCO-RW36L-DER_LEFTI\KMCO FSHUN3 SID KMCO RW36L LEFTI 20211210_1500 EST.pdf
Procedure Name:	FSHUN3
Software: DmeDmePlugin:	6.4.1
Date/Time:	12/10/2021 15:00 EST
Databases:	DTED MAX

Failures

No Failures

Warnings

No Warnings

Notes For Flight Check

None

Flight Plan

Name	Type	Lat/Lon	Altitude (ft)	VNAV Mode	Ground Speed (kts)	Turn Type	Leg Type
KMCO:RW36L:DER	WP	N28° 26' 53.857", W081° 19' 37.109"	92.5	VNAV	130	FLY_OVER	TF
KYOTE	WP	N28° 30' 35.800", W081° 19' 39.500"	2000	VNAV	200	FLY_BY	TF
EARRS	WP	N28° 32' 47.620", W081° 19' 40.520"	2500	VNAV	230	FLY_BY	TF
LEFTI	WP	N28° 35' 51.040", W081° 21' 12.480"	2500	VNAV	230	FLY_BY	TF
Climb Gradient: 500.0 ft/NM up to 600.0 ft MSL 200.0 ft/NM							

Flyability

Flight Type:	SID
Selected Airport:	KMCO [IFPA]
Climb Gradient:	500.0 ft/NM up to 600.0 ft MSL 200.0 ft/NM
Speeds:	130 at the Runway DER
	145 at the end of the VA or VI leg
	200 Ground Speed to 11000 FT
	240 Ground Speed to 18000 FT
	260 Ground Speed to 24000 FT
	340 Ground Speed above 24000 FT
Descent During a Turn:	Allowed
VNAV Mode:	Flight Plan

DME DME Assessment Results for FSHUN3 path KMCO:RW36L:DER_LEFTI

DME/DME	
RNP:	RNP 2
Flight Mode:	Manual
Line of Sight (DTED Level 0 Max):	Evaluated
Inertial Drift:	Enabled
Initial Drift:	0.558 NM
INS Drift Rate:	8.0 NM/Hour
Range Mode:	OSV
RNP Edges:	Evaluated
Min DME Range:	3.0 NM
DME Types:	DME, VOR-DME, VORTAC
DME Include Angles:	30 to 150
Critical DMEs:	Not Allowed
DoD Facilities:	Not included
Foreign Facilities:	Included
High DMEs:	Included
Low DMEs:	Included
Terminal DMEs:	Included
Flight Check DMEs:	Not selected
Higher Altitudes:	Not Evaluated
Near Maximum Altitude:	Not Evaluated
Automatic ESVs:	Not enabled
Disabled DMEs:	None

DME/DME (Continued)										
DMEs Used										
#	Name	Lat/Lon	MAGVAR	Range	Type	Source	Critical	Status	Time	Distance

Flight Check DME Selection						
Distance [NM]	Selected DMEs					Alternate
0.0						

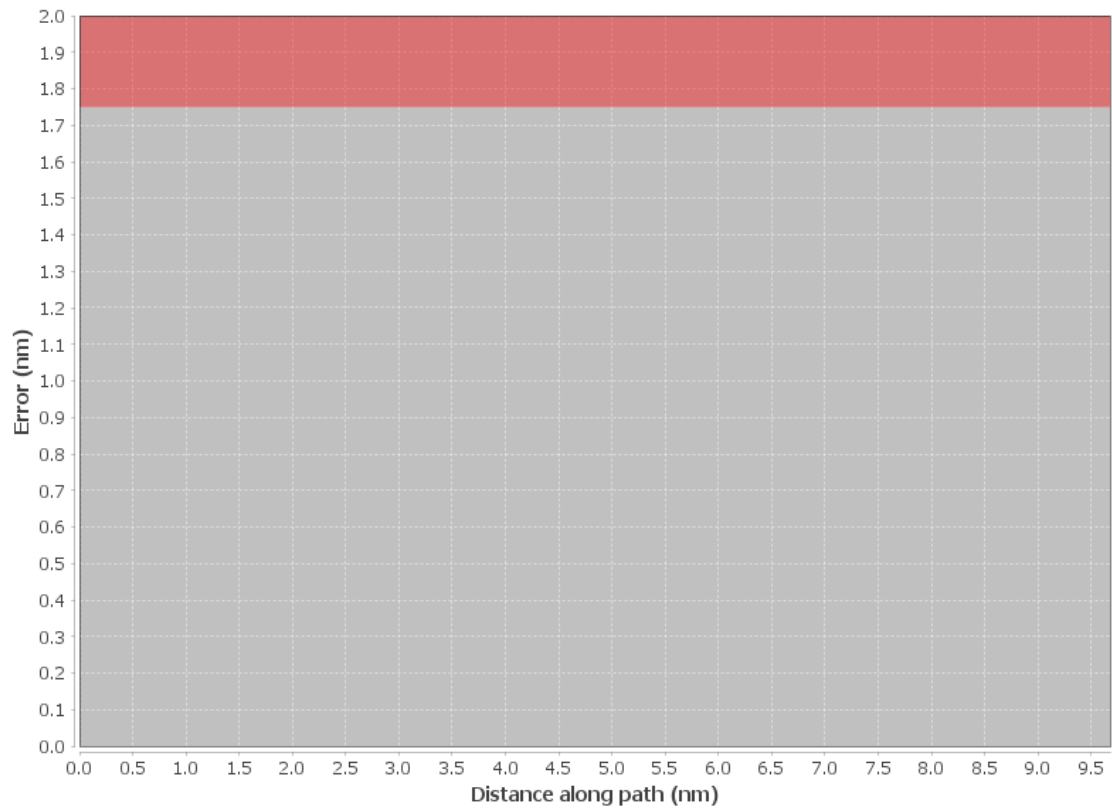
Inertial Drift Segments			
#	Start Location	End Location	Length [NM]
1	N28° 26' 55.962", W081° 19' 37.132"	N28° 35' 51.040", W081° 21' 12.480"	9.1961

Available DMEs by Waypoints		
Waypoint Before	Waypoint After	DME List
KMCO:RW36L:DER	KYOTE	
KYOTE	EARRS	
EARRS	LEFTI	

User Data Files								
#	File Name							
None								
User DMEs								
#	Name	Lat/Lon	MAGVAR	Range	Elevation [ft]	Frequency	Replaces	Status
1	OCF FAA 714002-18 OCF [IFPA]	N29° 10' 38.918", W082° 13' 34.802"	0.0 E	40	78.3	113.7	OCF FAA 714002-18	
ESV:		Bearing [True]: 117.0° to 180.0° Bearing [Mag]: 117.0° to 180.0°				Arc Distance: Out to 80.0 NM Altitude: 4000.0 to 20000.0 ft		
2	OMN FAA 694106-20 OMN [IFPA]	N29° 18' 11.707", W081° 06' 45.706"	0.0 E	130	18.8	112.6	OMN FAA 694106-20	
ESV:		Bearing [True]: 190.0° to 255.0° Bearing [Mag]: 190.0° to 255.0°				Arc Distance: Out to 72.0 NM Altitude: 3000.0 to 18000.0 ft		

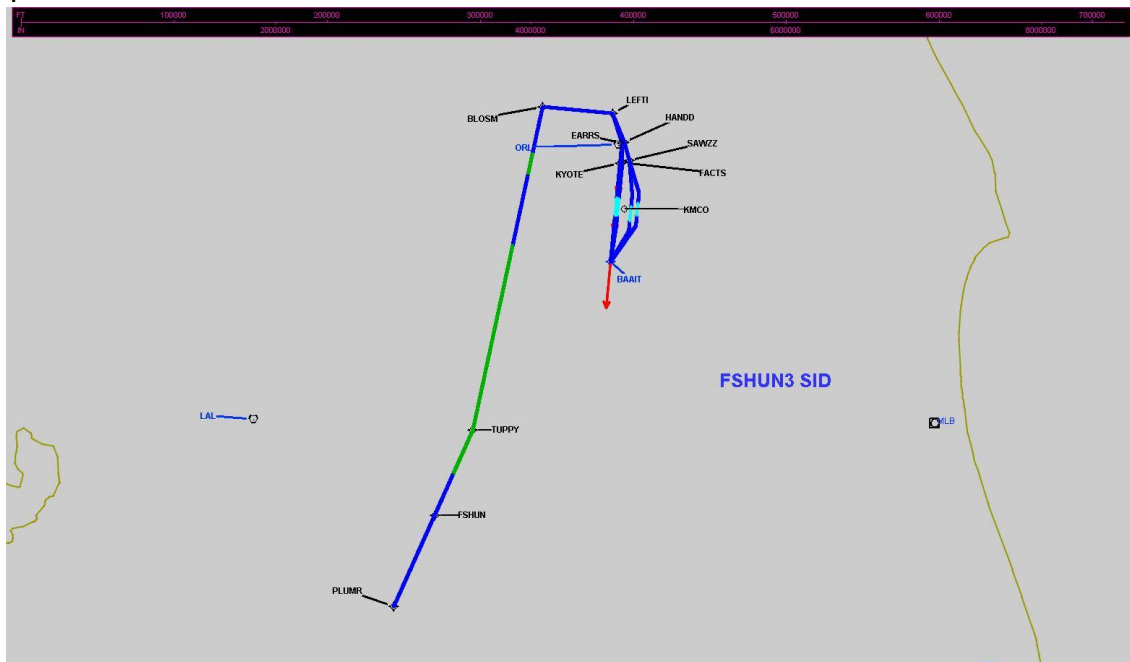
DME DME Assessment Results for FSHUN3 path KMCO:RW36L:DER_LEFTI

DME Error



DME DME Assessment Results for FSHUN3 path KMCO:RW36L:DER_LEFTI

Graphic Depiction 1



DME DME Assessment Results for FSHUN3 path KMCO:RW36R:DER_EARRS

Results Summary

Flyability:	Completed
DME/DME:	Completed - No Critical DMEs
Name:	Miles CTR Carpenter
Project File:	C:\Users\Miles CTR Carpenter\Desktop\FLMP May 2022 DME Evaluations\KMCO\KMCO FSHUN3 SID DME 20211109_1541 EST\KMCO FSHUN3 SID DME_211109.tgs
Output File:	C:\Users\Miles CTR Carpenter\Desktop\FLMP May 2022 DME Evaluations\KMCO\KMCO [IFPA] FSHUN3 20211210_1500 EST\KMCO-RW36R-DER_EARRS\KMCO FSHUN3 SID KMCO RW36R EARRS 20211210_1500 EST.pdf
Procedure Name:	FSHUN3
Software: DmeDmePlugin:	6.4.1
Date/Time:	12/10/2021 15:00 EST
Databases:	DTED MAX

Failures

No Failures

Warnings

No Warnings

Notes For Flight Check

None

Flight Plan

Name	Type	Lat/Lon	Altitude (ft)	VNAV Mode	Ground Speed (kts)	Turn Type	Leg Type
KMCO:RW36R:DER	WP	N28° 26' 54.004", W081° 19' 20.302"	92.4	VNAV	130	FLY_OVER	TF
FACTS	WP	N28° 30' 39.750", W081° 19' 22.710"	2000	VNAV	200	FLY_BY	TF
EARRS	WP	N28° 32' 47.620", W081° 19' 40.520"	2500	VNAV	230	FLY_BY	TF
Climb Gradient: 500.0 ft/NM up to 600.0 ft MSL 200.0 ft/NM							

Flyability

Flight Type:	SID
Selected Airport:	KMCO [IFPA]
Climb Gradient:	500.0 ft/NM up to 600.0 ft MSL 200.0 ft/NM
Speeds:	130 at the Runway DER
	145 at the end of the VA or VI leg
	200 Ground Speed to 11000 FT
	240 Ground Speed to 18000 FT
	260 Ground Speed to 24000 FT
	340 Ground Speed above 24000 FT
Descent During a Turn:	Allowed
VNAV Mode:	Flight Plan

DME DME Assessment Results for FSHUN3 path KMCO:RW36R:DER_EARRS

DME/DME	
RNP:	RNP 2
Flight Mode:	Manual
Line of Sight (DTED Level 0 Max):	Evaluated
Inertial Drift:	Enabled
Initial Drift:	0.558 NM
INS Drift Rate:	8.0 NM/Hour
Range Mode:	OSV
RNP Edges:	Evaluated
Min DME Range:	3.0 NM
DME Types:	DME, VOR-DME, VORTAC
DME Include Angles:	30 to 150
Critical DMEs:	Not Allowed
DoD Facilities:	Not included
Foreign Facilities:	Included
High DMEs:	Included
Low DMEs:	Included
Terminal DMEs:	Included
Flight Check DMEs:	Not selected
Higher Altitudes:	Not Evaluated
Near Maximum Altitude:	Not Evaluated
Automatic ESVs:	Not enabled
Disabled DMEs:	None

DME/DME (Continued)										
DMEs Used										
#	Name	Lat/Lon	MAGVAR	Range	Type	Source	Critical	Status	Time	Distance

Flight Check DME Selection						
Distance [NM]	Selected DMEs					Alternate
0.0						

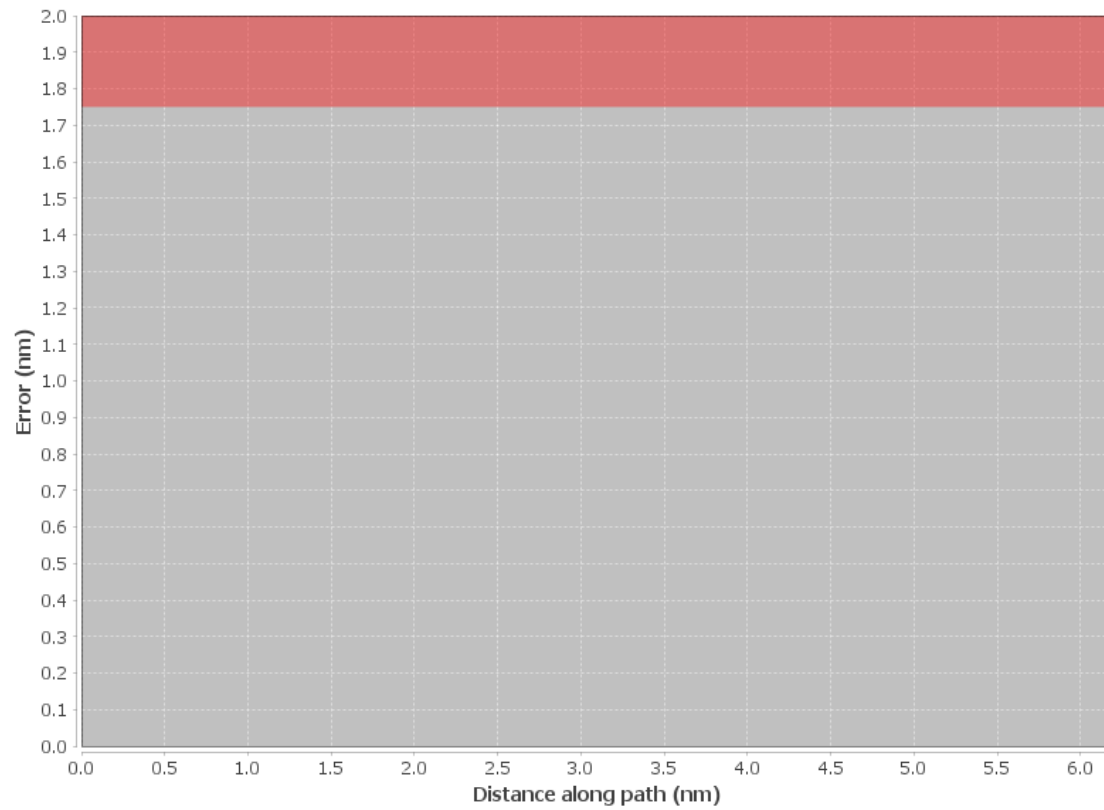
Inertial Drift Segments			
#	Start Location	End Location	Length [NM]
1	N28° 26' 56.110", W081° 19' 20.325"	N28° 32' 47.620", W081° 19' 40.520"	5.8695

Available DMEs by Waypoints		
Waypoint Before	Waypoint After	DME List
KMCO:RW36R:DER	FACTS	
FACTS	EARRS	

User Data Files								
#	File Name							
None								
User DMEs								
#	Name	Lat/Lon	MAGVAR	Range	Elevation [ft]	Frequency	Replaces	Status
1	OCF FAA 714002-18 OCF [IFPA]	N29° 10' 38.918", W082° 13' 34.802"	0.0 E	40	78.3	113.7	OCF FAA 714002-18	
ESV:		Bearing [True]: 117.0° to 180.0° Bearing [Mag]: 117.0° to 180.0°				Arc Distance: Out to 80.0 NM Altitude: 4000.0 to 20000.0 ft		
2	OMN FAA 694106-20 OMN [IFPA]	N29° 18' 11.707", W081° 06' 45.706"	0.0 E	130	18.8	112.6	OMN FAA 694106-20	
ESV:		Bearing [True]: 190.0° to 255.0° Bearing [Mag]: 190.0° to 255.0°				Arc Distance: Out to 72.0 NM Altitude: 3000.0 to 18000.0 ft		

DME DME Assessment Results for FSHUN3 path KMCO:RW36R:DER_EARRS

DME Error



DME DME Assessment Results for FSHUN3 path KMCO:RW36R:DER_EARRS

Graphic Depiction 1

