

| | | | | | |
|--|------------------------------|--|-------------------------------------|---|--|
| Flight Procedures Cover Page | Task Action: FLIGHT CHECK | Task Type: IAP | Estimated Chart Date: 12/02/2021 | APWS Task ID: 4498004C314446DDA8B3F349310A7969 | APWS Project ID: 354C3496F492421990C95B2AD02A9731 |
| Procedure: RNAV (GPS) RWY 20 AMDT 3 | | Enroute: NO | Specialist: Gorman, Barbara | | Agreement Number: |
| Airport ID: KCOU | | | Airport City: COLUMBIA | | State: MO |
| Facility ID: | Facility Type: | Flight Inspection Remark Type: Hold FC Slot | | | |

Procedure Comments:
PENDING DATA USED FOR AIRPORT AND RUNWAYS.
REMOVED NOTAM FDC 9/0857.
CONTACT: JON DENTON (AJV-A432): 405.954.5467

04/14/21: THIS IS AN UPDATED COPY OF THE FORM DEVELOPED ON 03/01/21.
1. CHANGE REQUIRED EFFECTIVE DATE FROM ROUTINE TO 12/02/21.

10/04/2021: THIS IS A CORRECTED COPY OF THE FORM APPROVED ON 04/15/2021.
1. REMOVED "FO" FROM TERMINAL ROUTES MISSED APPROACH CA LEG.
2. CHANGED 8260-2 FIX YEGSA LATITUDE/LONGITUDE FROM 390215.75N/0921818.47W TO 390315.75N/0921818.47W.

Digitally signed by
JON DENTON
Oct 04, 2021

QUALITY
18
CHECKED

COLUMBIA, MISSOURI

AL-5595 (FAA)

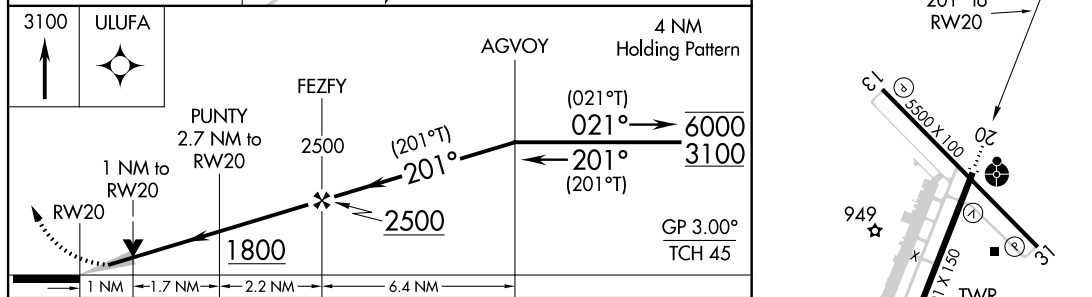
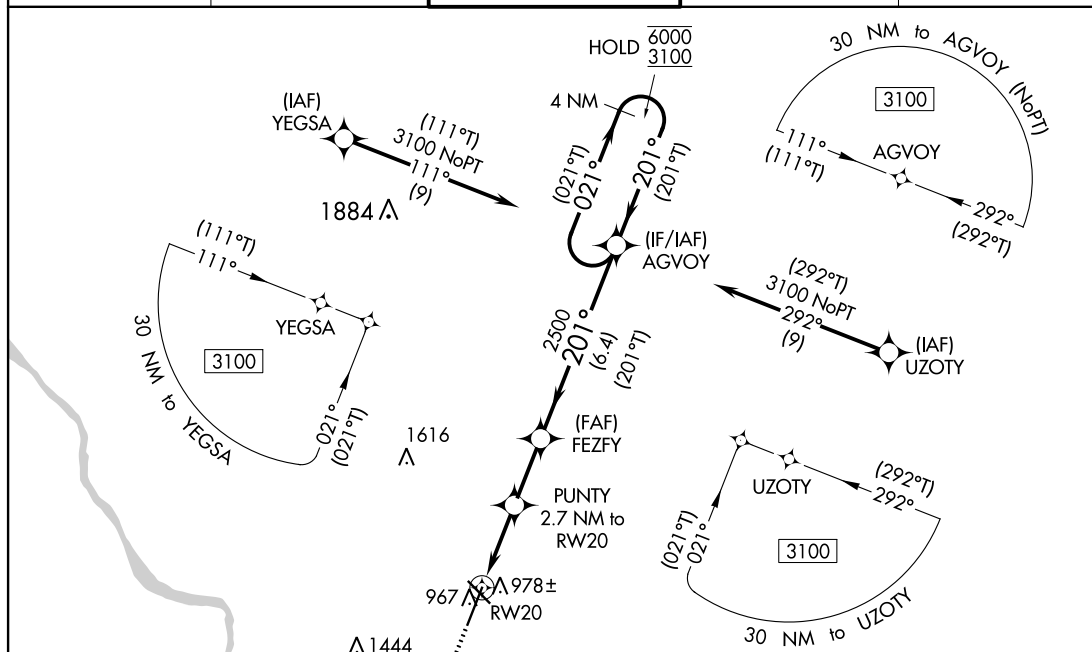
FIG

| | | |
|--|------------------------|--|
| WAAS CH 93599 W20A | APP CRS 201° | Rwy Idg TDZE Apt Elev 6501 889 889 |
|--|------------------------|--|

RNAV (GPS) RWY 20

COLUMBIA RGNL (COU)

| | | | | |
|-----------------------|---------------------------------------|--|---|-------------------------|
| RNP APCH - GPS | | ODALS | MISSED APPROACH: Climb to 3100 direct ULUFA and hold. | |
| ATIS 128.45 | MIZZU APP CON 124.375 353.7 | COLUMBIA TOWER ★ 119.3 (CTAF) 363.25 | GND CON 121.6 | UNICOM 122.95 |



| CATEGORY | A | B | C | D |
|--------------|-----------------------|-----------------------|-------------------------------|-----------------------|
| LPV DA | | 1139-3/4 | 250 (300-3/4) | |
| LNAV/VNAV DA | | 1139-3/4 | 250 (300-3/4) | |
| LNAV MDA | | 1240-1 | 351 (400-1) | |
| CIRCLING | 1280-1 391 (400-1) | 1340-1 451 (500-1) | 1360-1 1/2 471 (500-1 1/2) | 1440-2 551 (600-2) |

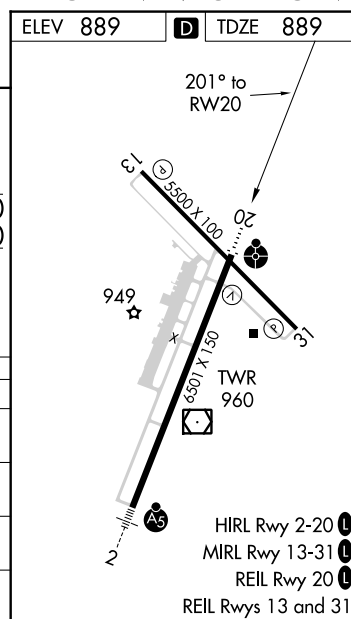
COLUMBIA, MISSOURI

Amdt 3 FIG

38°49'N-92°13'W

COLUMBIA RGNL (COU)
RNAV (GPS) RWY 20

PROTOTYPE: NOT
FOR NAVIGATION



AUTOMATED AL-5595 RNAV (GPS) RWY 20

NC-3

8 APR 2021

COMPILER: CG

REVIEWER:

DBL CHKR:

EFF DATE: FIG

| | | |
|--|------------------------|---|
| WAAS CH 93599 W20A | APP CRS 201° | Rwy Idg 6501 TDZE 889 Apt Elev 889 |
|--|------------------------|---|

RNAV (GPS) RWY 20

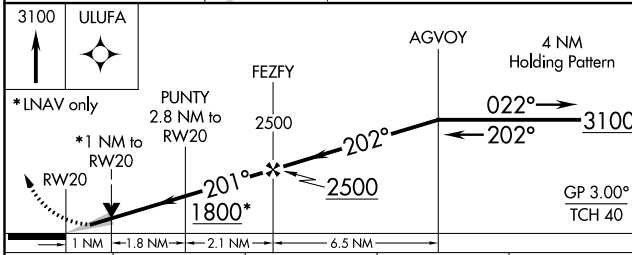
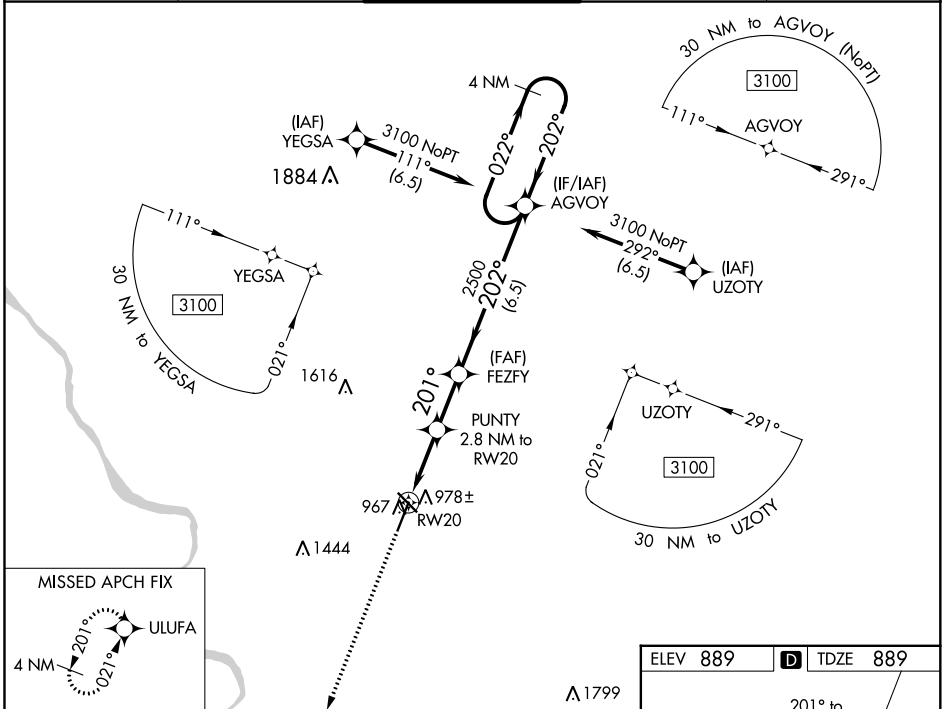
COLUMBIA RGNL (COU)


T For uncompensated Baro-VNAV systems, LNAV/VNAV NA below -17°C (2°F) or above 54°C (130°F). Circling NA for Cat D west of Rws 2 and 13.
DME/DME RNP-0.3 NA. For inop ALS, increase LNAV Cat A/B visibility to 7/8 SM.

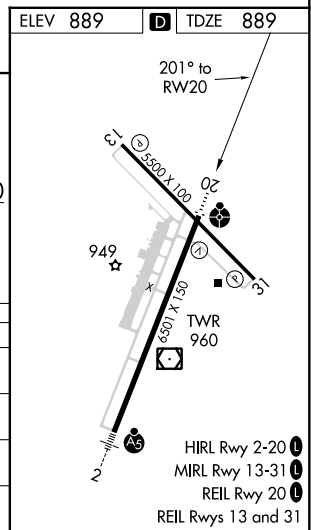
ODALS

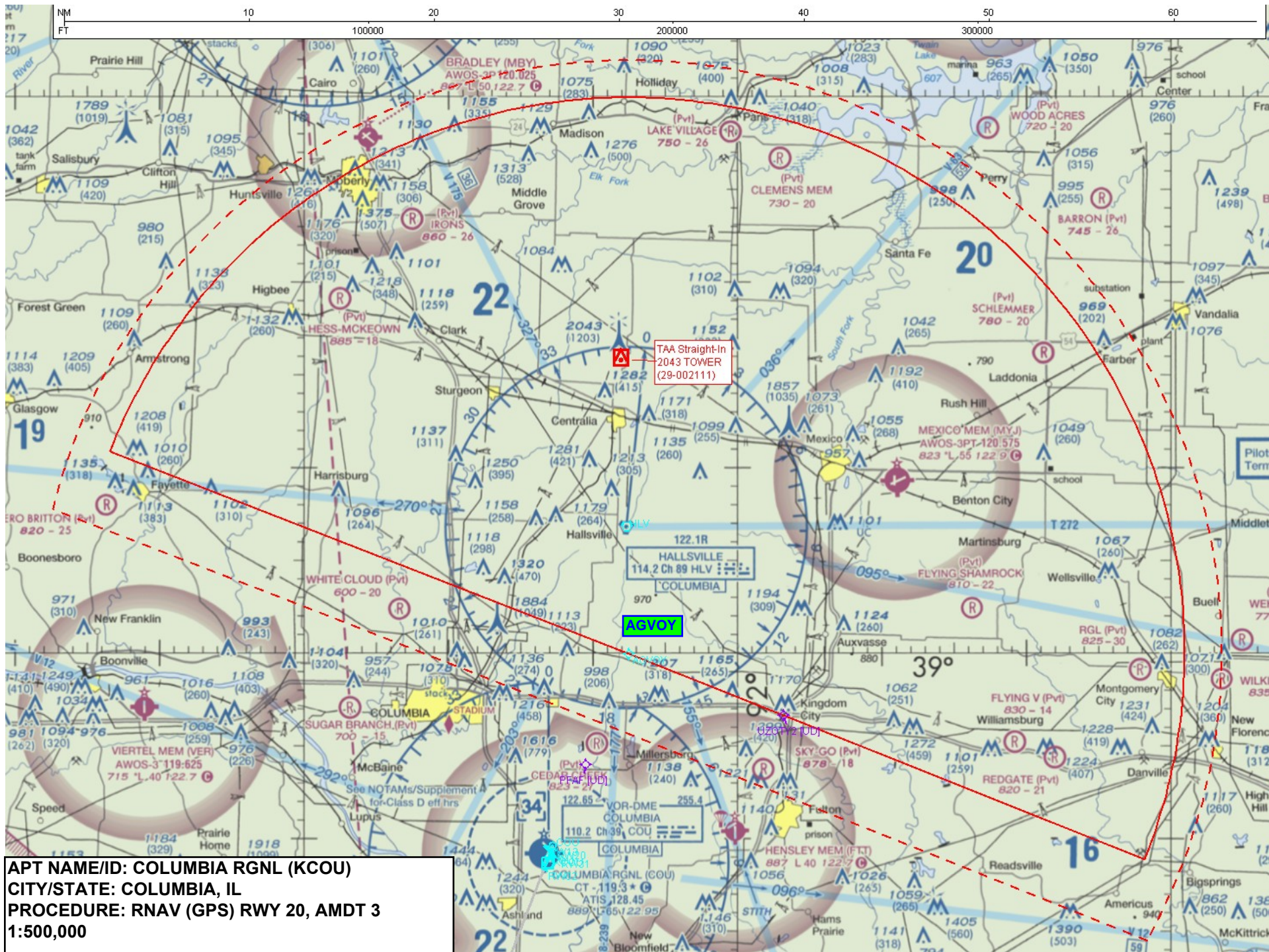
MISSED APPROACH: Climb to 3100 direct ULUFA and hold.

| | | | | |
|-----------------------|---------------------------------------|---|-------------------------|-------------------------|
| ATIS 128.45 | MIZZU APP CON 124.375 353.7 | COLUMBIA TOWER★ 119.3 (CTAF) 0 363.25 | GND CON 121.6 | UNICOM 122.95 |
|-----------------------|---------------------------------------|---|-------------------------|-------------------------|

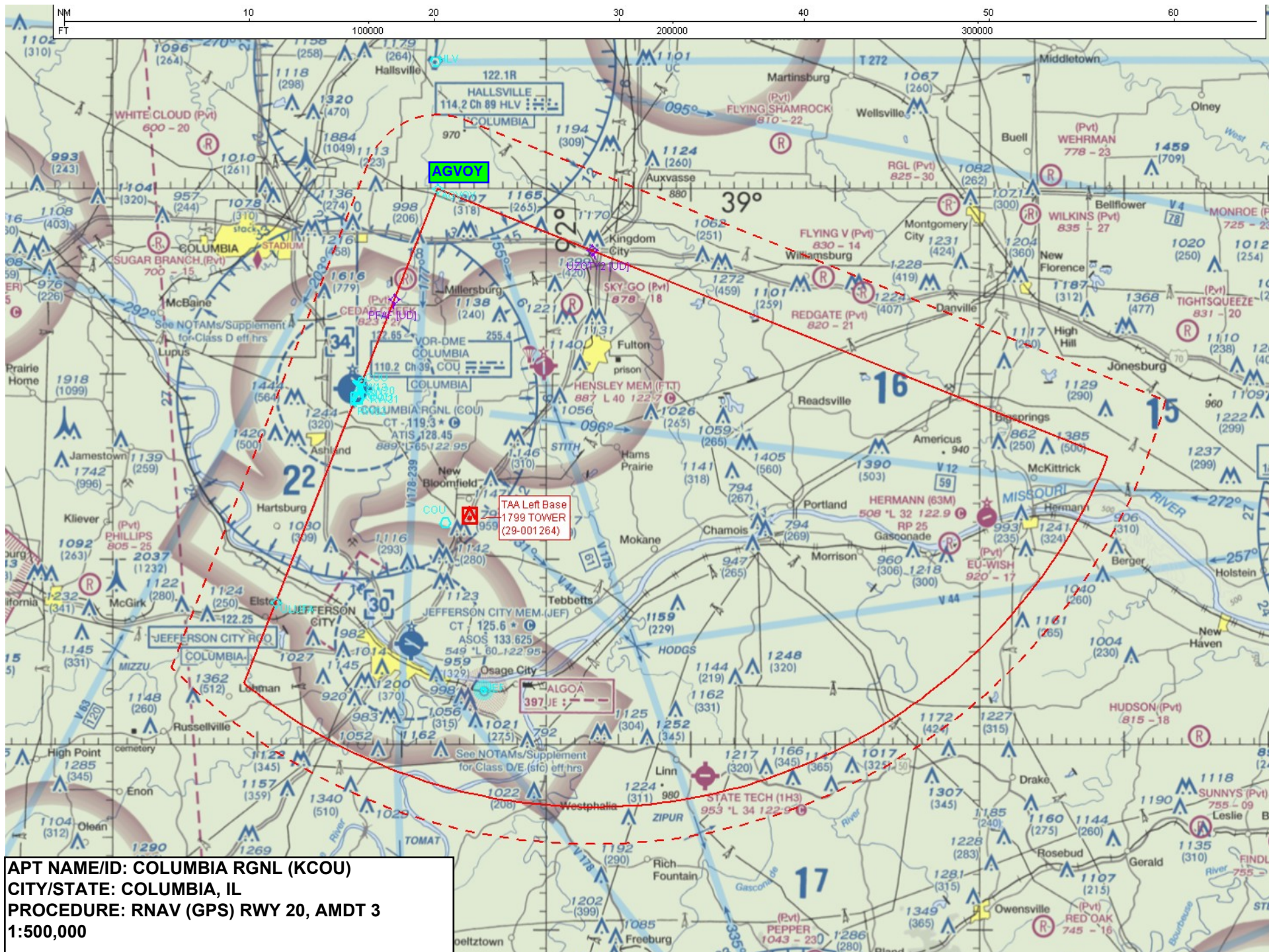


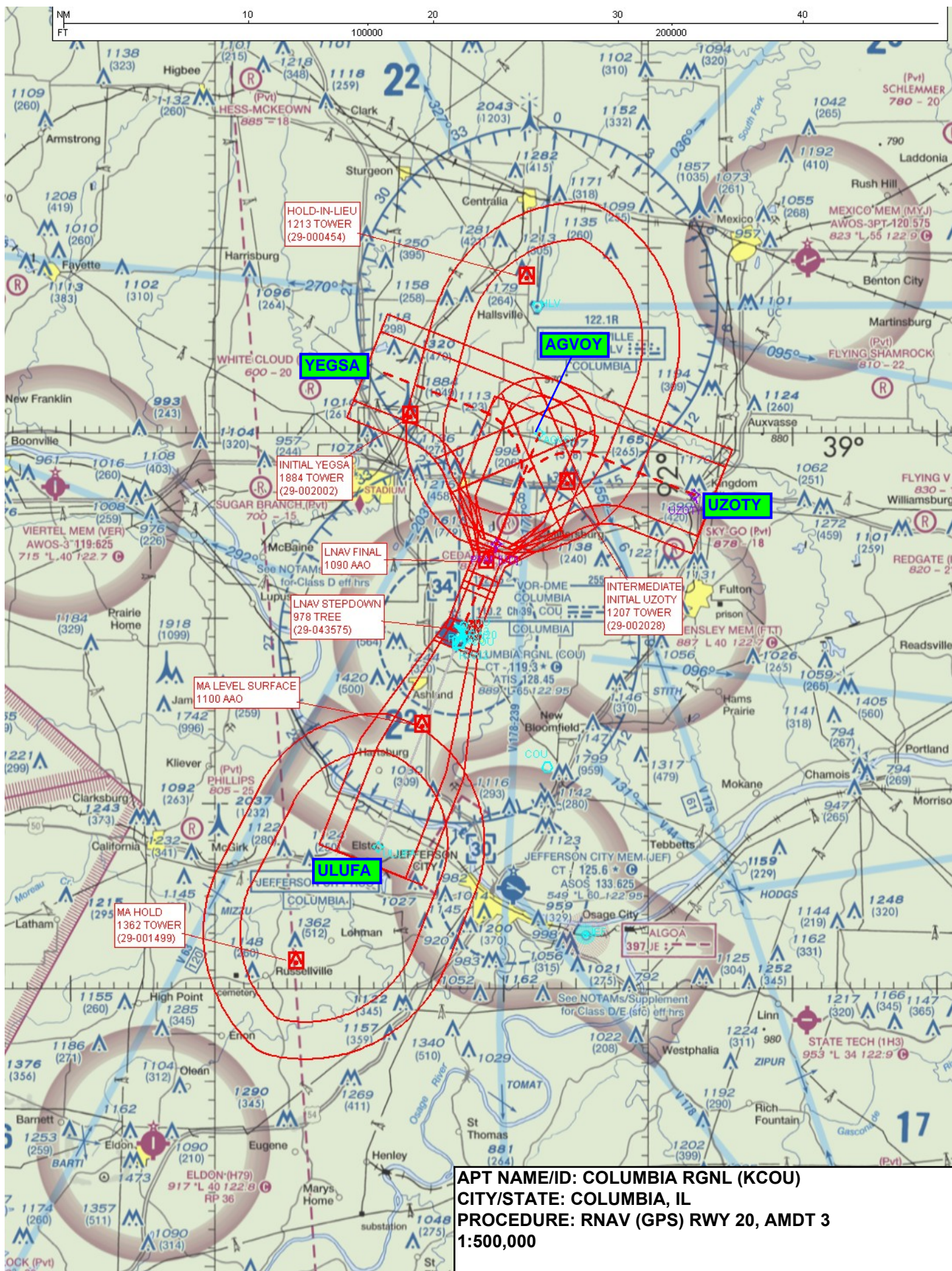
| CATEGORY | A | B | C | D |
|--|---|-----------------------|--|-----------------------|
| LPV DA | 1139- $\frac{3}{4}$ 250 (300- $\frac{3}{4}$) | | | |
| RNAV/DA | 1139- $\frac{3}{4}$ 250 (300- $\frac{3}{4}$) | | | |
| RNAV MDA | 1240- $\frac{3}{4}$ 351 (400- $\frac{3}{4}$) | | 1240- $\frac{7}{8}$ 351 (400- $\frac{7}{8}$) | |
|  CIRCLING | 1300-1 411 (500-1) | 1340-1 451 (500-1) | 1340-1 $\frac{1}{2}$ 451 (500-1 $\frac{1}{2}$) | 1440-2 551 (600-2) |

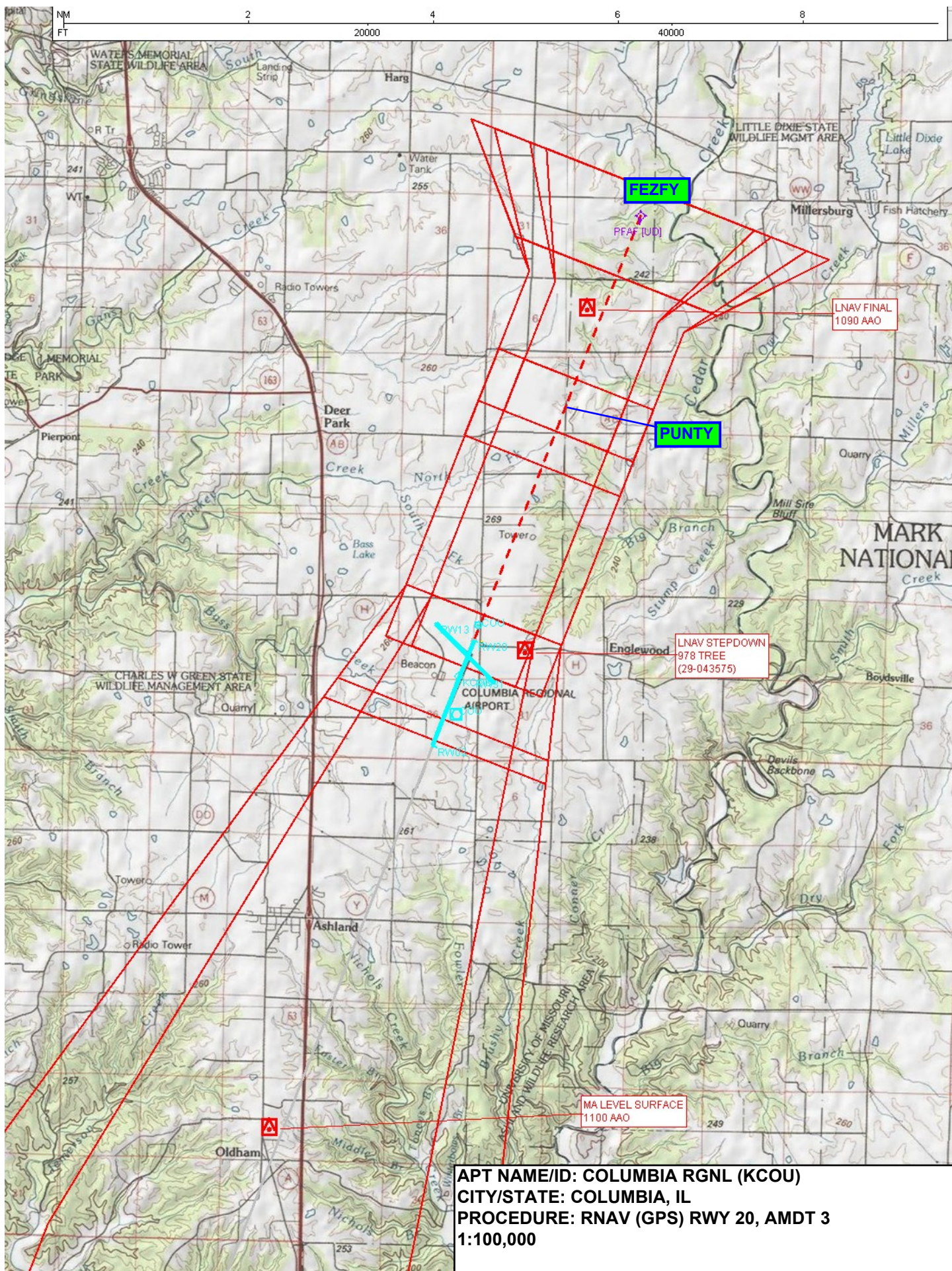


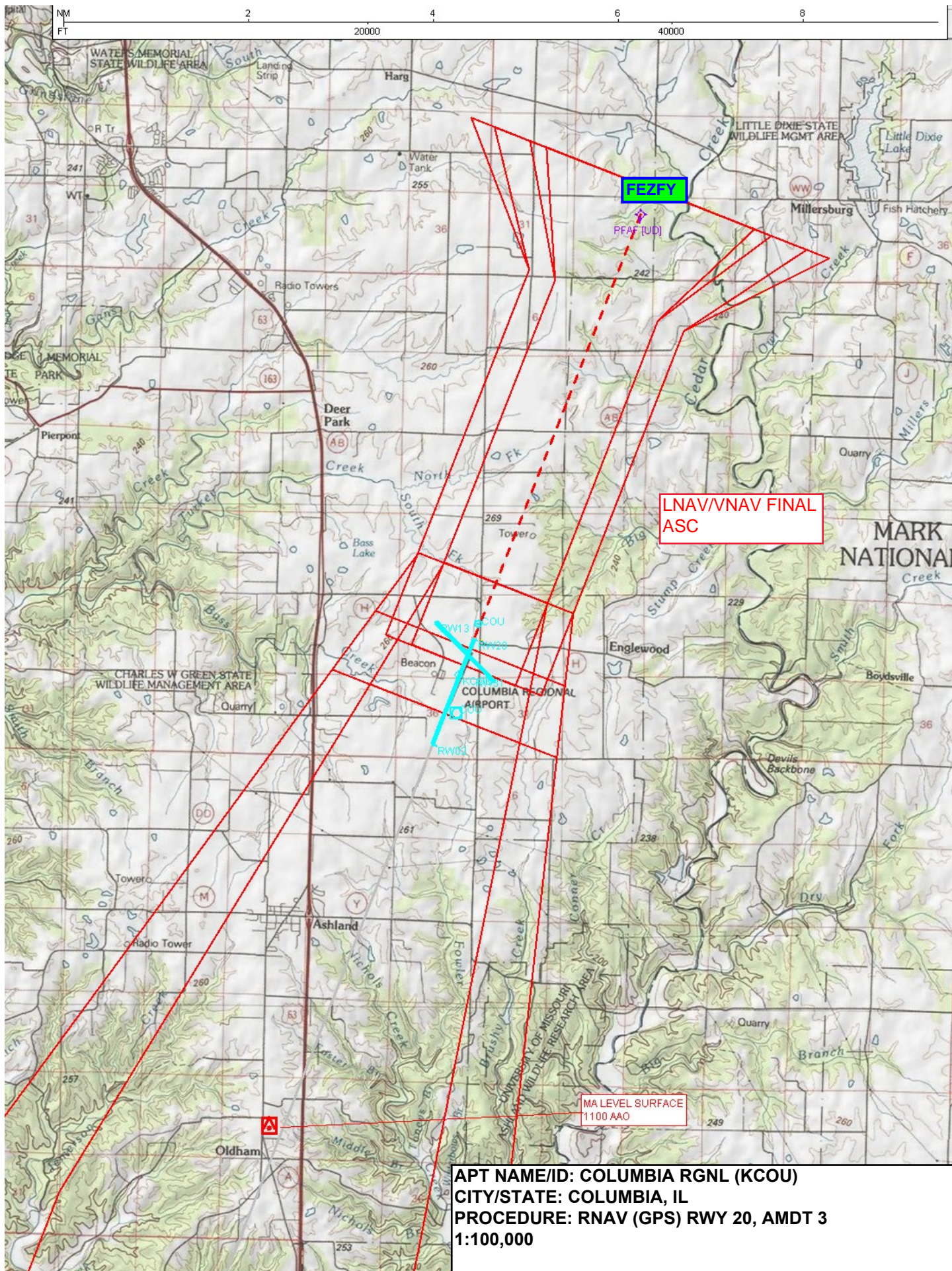


APT NAME/ID: COLUMBIA RGNL (KCOU)
CITY/STATE: COLUMBIA, IL
PROCEDURE: RNAV (GPS) RWY 20, AMDT 3
1:500,000









APT NAME/ID: COLUMBIA RGNL (KCOU)
CITY/STATE: COLUMBIA, IL
PROCEDURE: RNAV (GPS) RWY 20, AMDT 3
1:100,000

