

Flight Procedures Cover Page	Task Action: FLIGHT CHECK	Task Type: IAP	Estimated Chart Date: 05/21/2020	APWS Task ID: 444366AB617044CBAA4DC732E7AC184F	APWS Request ID: 0F19DBE15C774C63B4B887E0EC96FE26
Procedure: RNAV (GPS) RWY 16 AMDT 2		Enroute: NO	Specialist: Chaney, Andrea		Agreement Number:
Airport ID: KBGM	Airport Name: GREATER BINGHAMTON/EDWIN A LINK FIELD	Airport City: BINGHAMTON			State: NY
Facility ID:	Facility Type:	Flight Inspection Remark Type: New FC Slot			
<p><b>Procedure Comments:</b>  CONTACT GEORGE DAVIS (405) 954-9960/DAVID TEFFETELLER (202) 267-5177.</p> <p>CRC REMAINDER CHANGED FROM B14F0A37 TO 32F21D8B.</p> <p>THIS CANCELS NOTAM FDC 9/0072.</p>					

*Digitally signed by*  
**WARDELL HENNING**  
Jul 30, 2020

QUALITY  
22  
CHECKED

2.10.2020  
BD


QUALITY  
41  
CHECKED

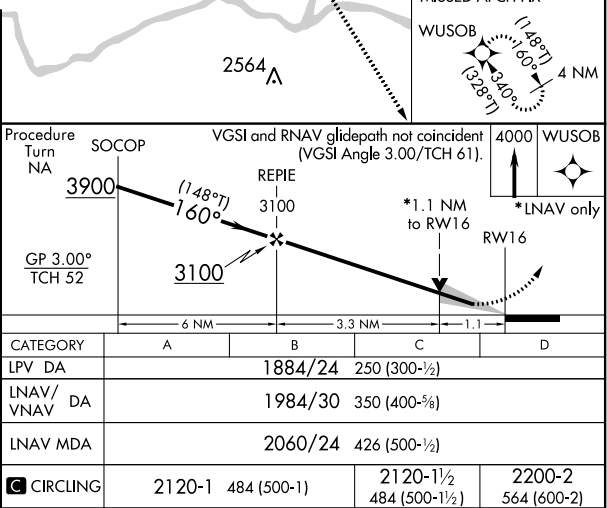
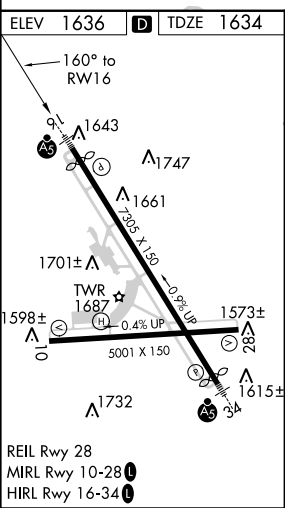
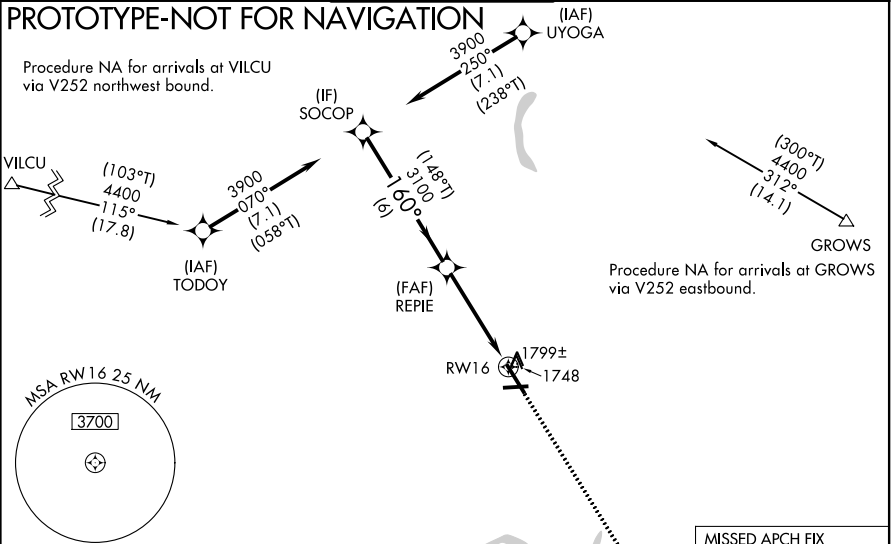


WAAS CH <b>66015</b> <b>W16A</b>	APP CRS <b>160°</b>	Rwy Idg TDZE Apt Elev <b>1636</b>	<b>6905</b> <b>1634</b> <b>1636</b>
--	------------------------	---	---

# RNAV (GPS) RWY 16

GREATER BINGHAMTON/EDWIN A. LINK FIELD (BGM)

RNP APCH.				<div>MALSR </div>	MISSED APPROACH: Climb to 4000 direct WUSOB and hold.	
<div><div>▼</div><div>▲</div></div> <div>For uncompensated Baro-VNAV systems, LNAV/VNAV NA below -21°C or above 54°C. For inop ALS, increase LNAV/VNAV all Cats visibility to RVR 5500.</div>						
ATIS 128.15	BINGHAMTON APP CON ★ 118.6 257.625	BINGHAMTON TOWER ★ 119.3 (CTAF) 0 239.25	GND CON 121.9	CINC DEL 125.05	UNICOM 122.95	



WAAS CH <b>66015</b> <b>W16A</b>	APP CRS <b>160°</b>	Rwy Idg <b>6905</b> TDZE <b>1634</b> Apt Elev <b>1636</b>
--	------------------------	---

## RNAV (GPS) RWY 16

GREATER BINGHAMTON/EDWIN A. LINK FIELD(BGM)

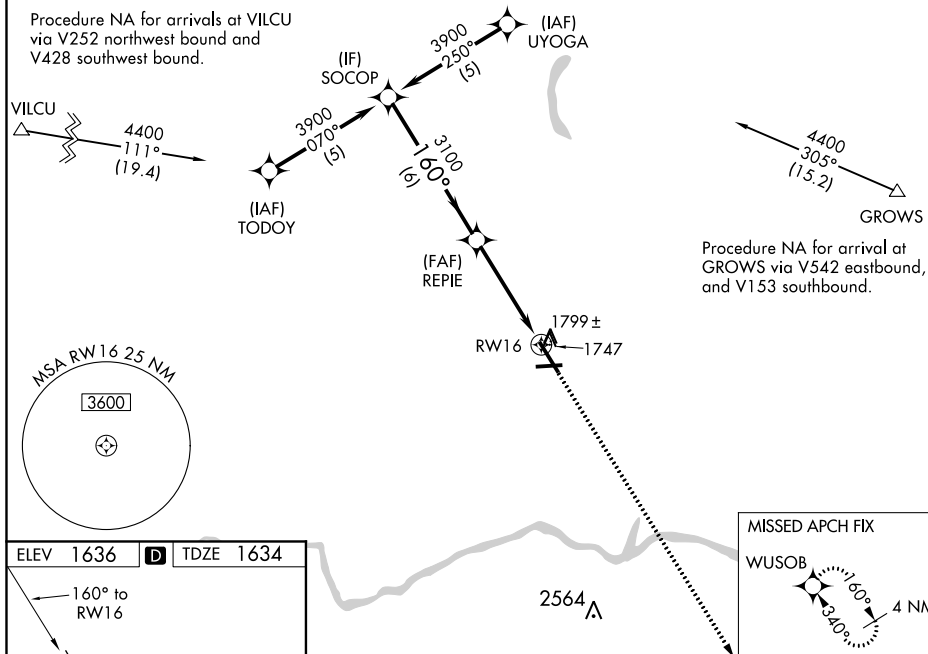
**▼** When VGSi inoperative, Circling Rwy 34 NA at night. Inoperative table does not apply to LPV all Cats. For uncompensated Baro-VNAV systems, LNAV/VNAV NA below -18°C (0°F) or above 45°C (113°F). DME/DME RNP-0.3 NA. Visibility reduction by helicopters NA. When local altimeter setting not received, use Ithaca altimeter setting and increase all DA 138 feet and all MDA 140 feet and increase LNAV/VNAV all Cats visibility ½ mile and LNAV and Circling Cats C and D visibility ¼ mile. For inoperative MALSR increase LNAV Cats A, C and D visibility ½ mile. For inoperative MALSR when using Ithaca altimeter setting increase LPV all Cats visibility ½ mile, LNAV Cats A and B visibility ¼ mile. Baro-VNAV and VDP NA when using Ithaca altimeter setting.



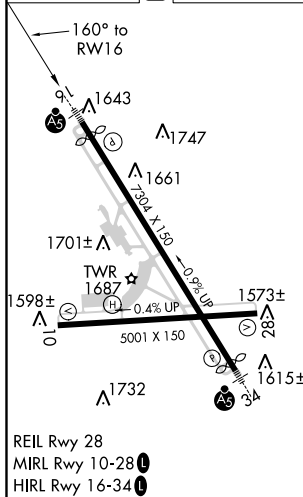
**MISSED APPROACH:**  
Climb to 4000 direct  
WUSOB and hold.

ATIS <b>128.15</b>	BINGHAMTON APP CON ★ <b>118.6 257.625</b>	BINGHAMTON TOWER ★ <b>119.3 (CTAF) 0 239.25</b>	GND CON <b>121.9</b>	CLNC DEL <b>125.05</b>	UNICOM <b>122.95</b>
-----------------------	--	--	-------------------------	---------------------------	-------------------------

Procedure NA for arrivals at VILCU  
via V252 northwest bound and  
V428 southwest bound.



ELEV 1636	<b>D</b>	TDZE 1634
-----------	----------	-----------



BINGHAMTON, NEW YORK

Amdt 1 11FEB10

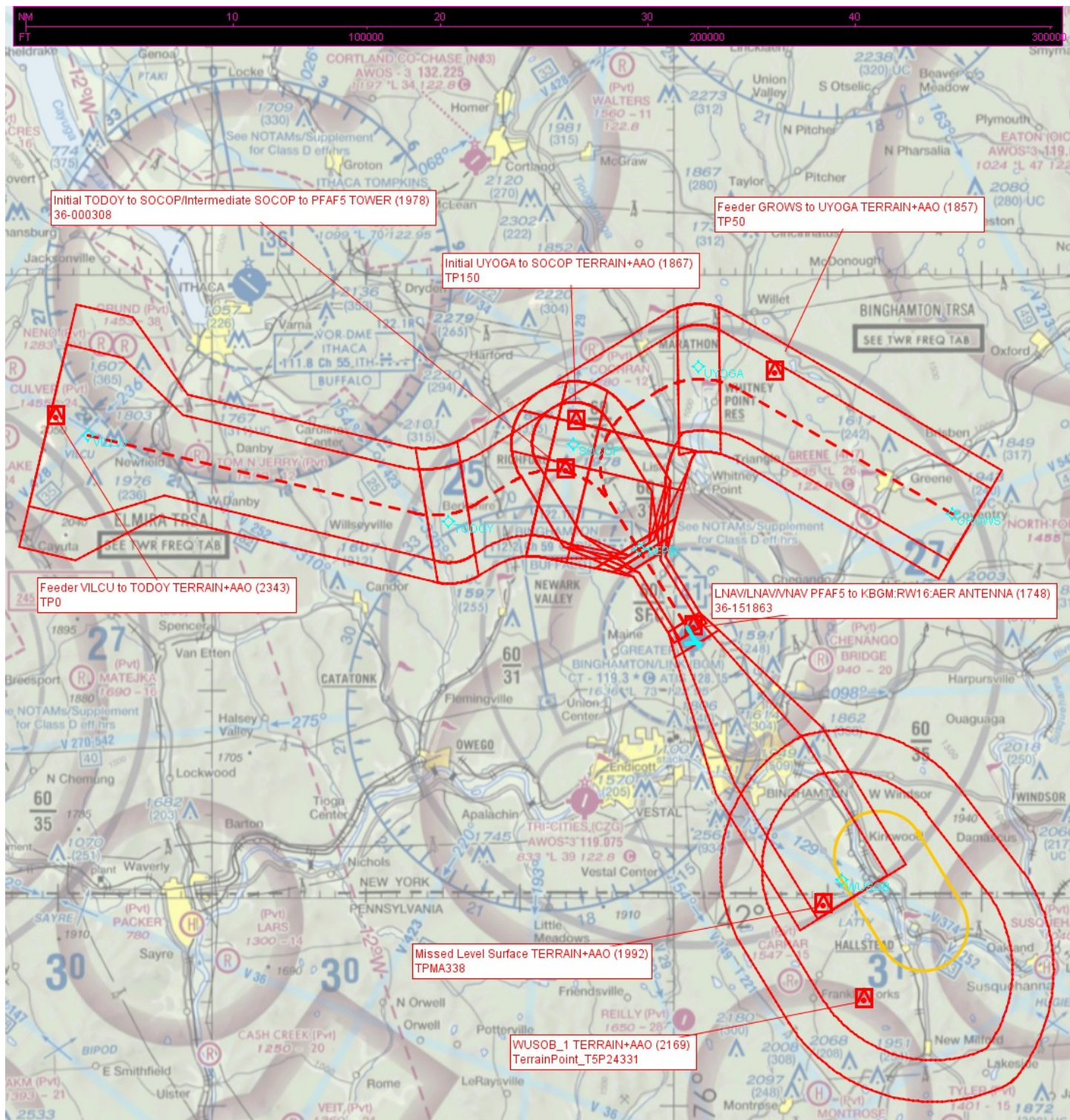
GREATER BINGHAMTON/EDWIN A. LINK FIELD (BGM)

42° 13'N-75° 59'W

RNAV (GPS) RWY 16

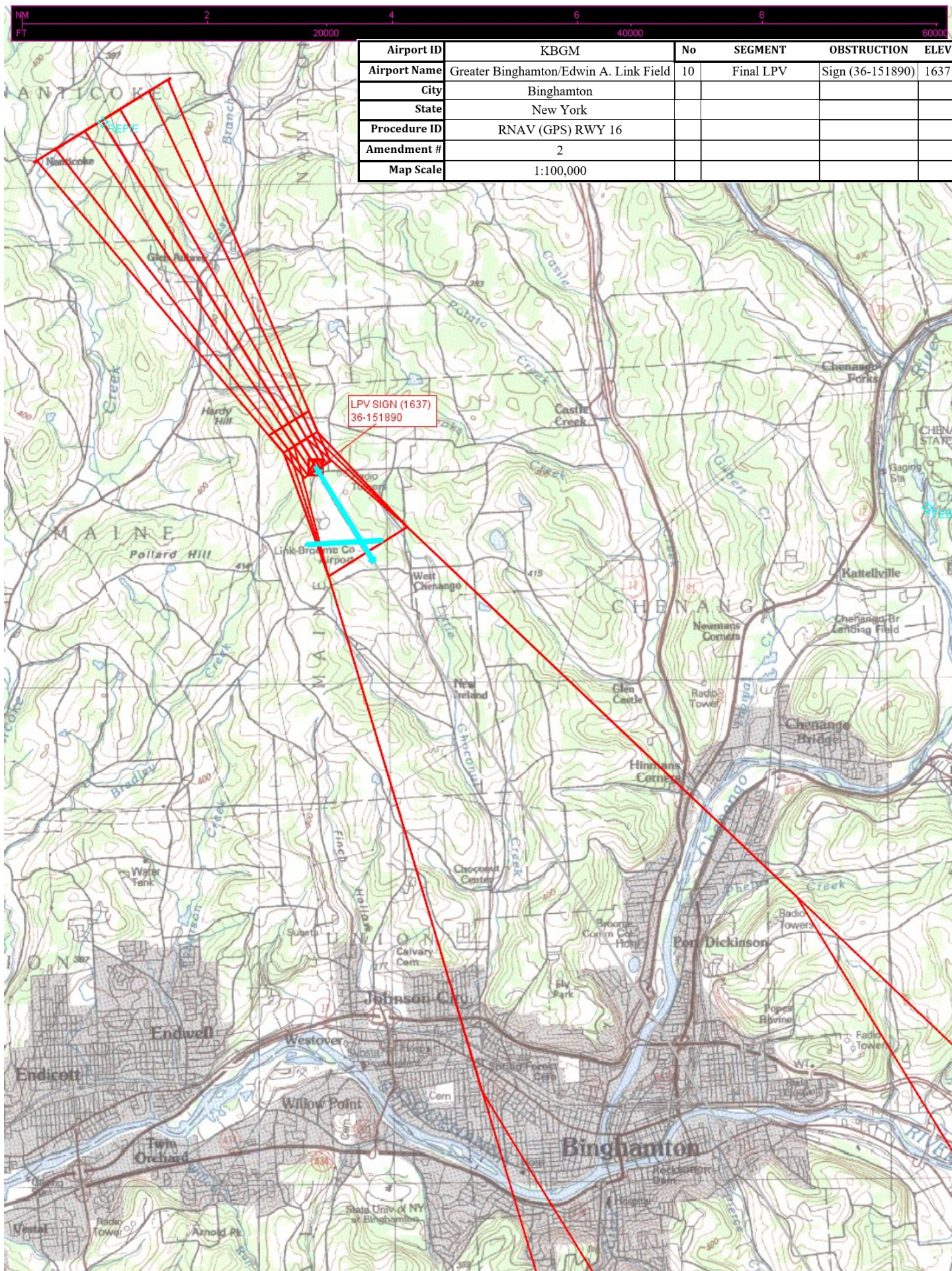
NE-2, 10 OCT 2019 to 07 NOV 2019

NE-2, 10 OCT 2019 to 07 NOV 2019

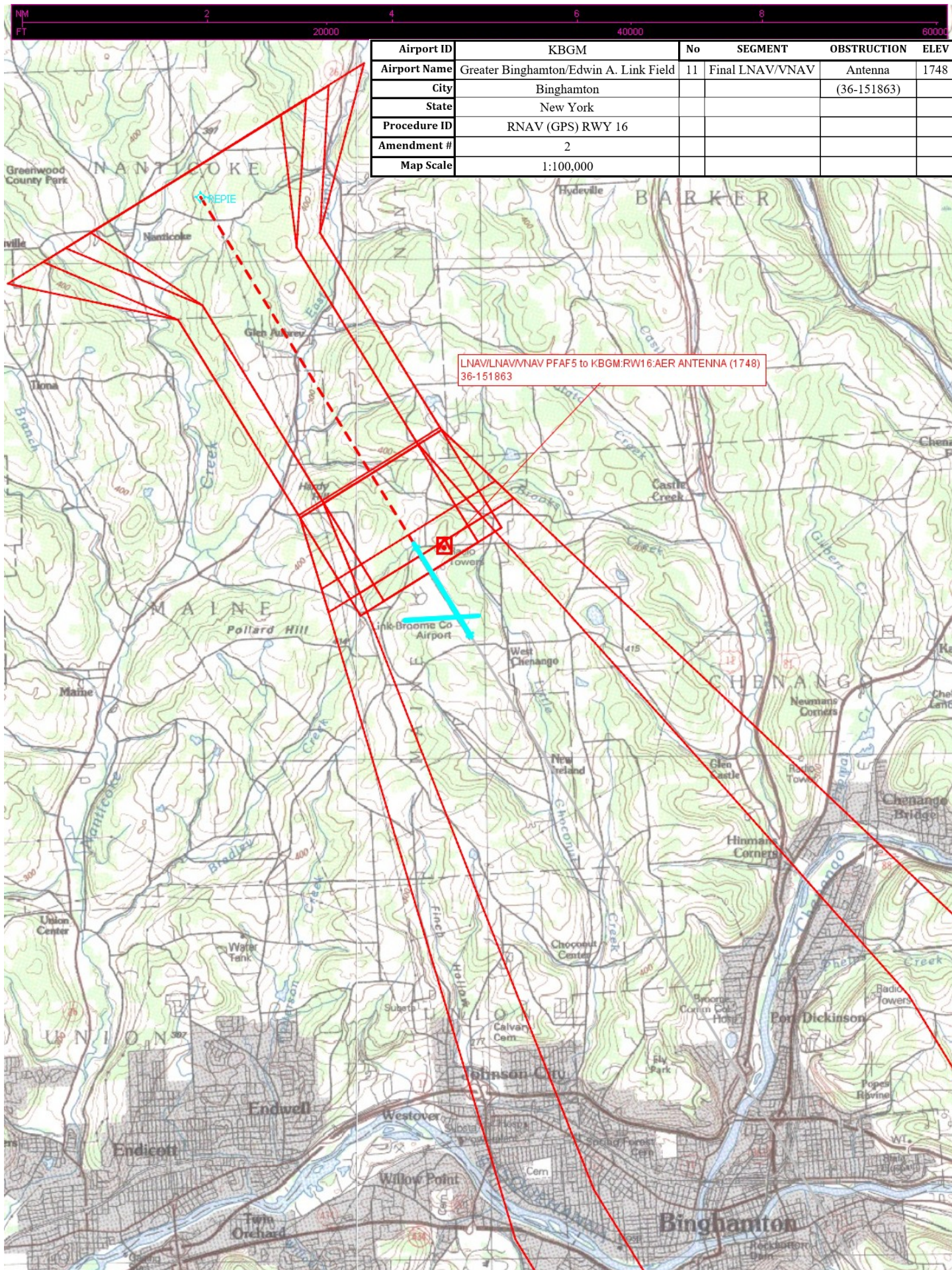


Airport ID	KBGM	No	SEGMENT	OBSTRUCTION	ELEV
Airport Name	Greater Binghamton/Edwin A. Link Field	1	GROVS Feeder	AAO	1857
City	Binghamton	3	VILCU Feeder	AAO	2343
State	New York	5	TODOY Initial	AAO	1978
Procedure ID	RNAV (GPS) RWY 16	7	UYOGA Initial	AAO	1867
Amendment #	2	5	Intermediate	AAO	1978
Map Scale	1:500,000	11	Final LNAV	Antenna	1748
				(36-151863)	
		12	Missed Approach	AAO	1992
			Missed Approach Holding	AAO	2169

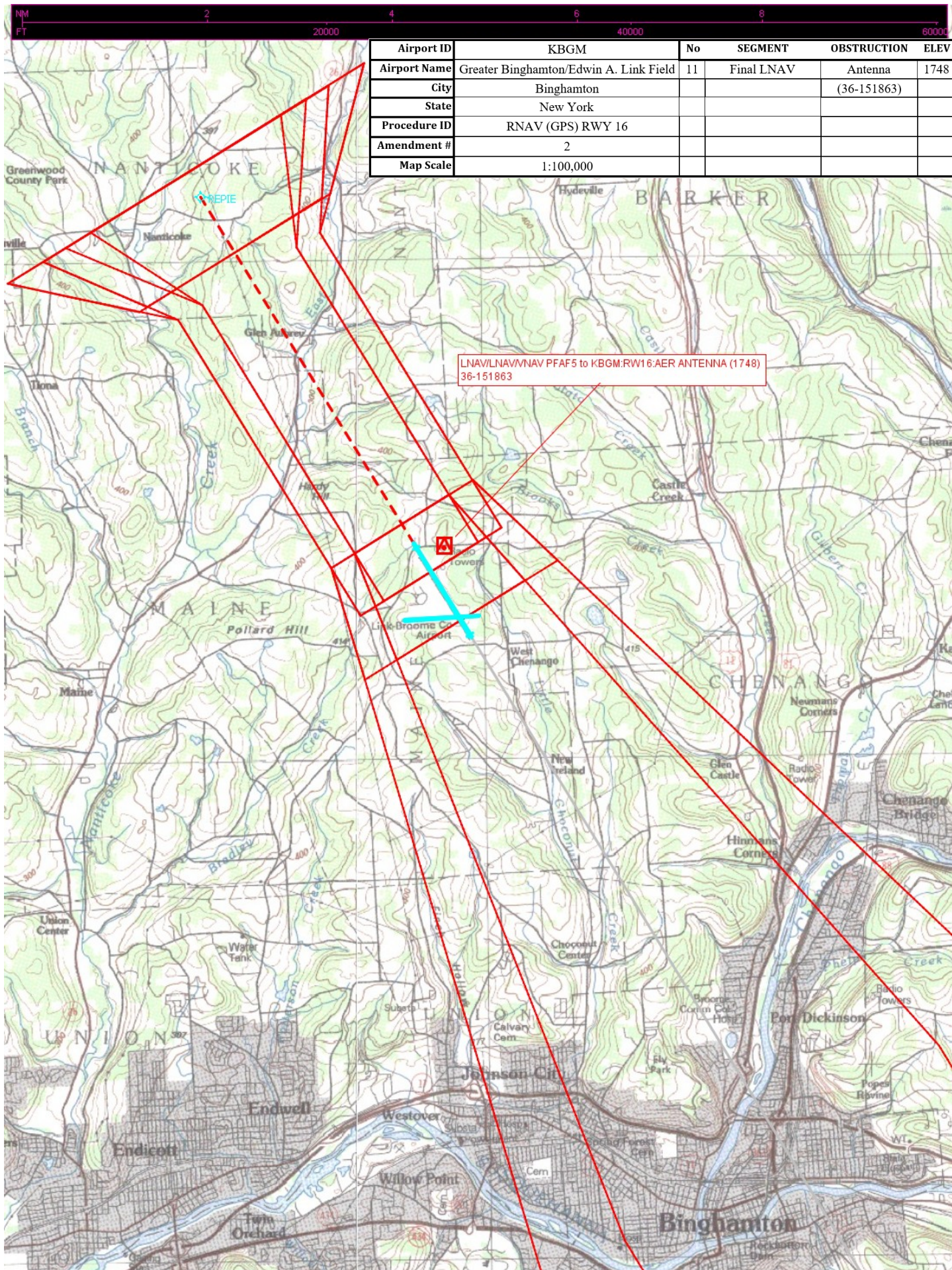












Airport ID	KBGM	No	SEGMENT	OBSTRUCTION	ELEV
Airport Name	Greater Binghamton/Edwin A. Link Field	11	Final LNAV	Antenna	1748
City	Binghamton			(36-151863)	
State	New York				
Procedure ID	RNAV (GPS) RWY 16				
Amendment #	2				
Map Scale	1:100,000				





Airport ID	KBGM	No	SEGMENT	OBSTRUCTION	ELEV
Airport Name	Greater Binghamton/Edwin A. Link Field	14	Circling CAT A-D	Tree	1819
City	Binghamton				
State	New York				
Procedure ID	RNAV (GPS) RWY 16				
Amendment #	2				
Map Scale	1:100,000				

