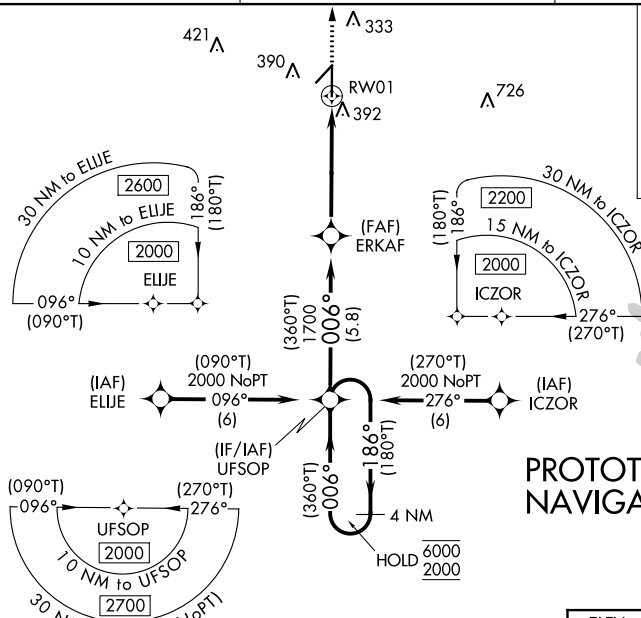


Flight Procedures Cover Page	Task Action: FLIGHT CHECK	Task Type: IAP	Estimated Chart Date: 07/11/2024	APWS Task ID: 43B38B82EC0E4474A45F1469BA1B5ABB	APWS Project ID: AF2B0C591A6947CFBF6F0D8442478D00
Procedure: RNAV (GPS) RWY 1 AMDT 2		Enroute: NO	Specialist: Bruce, Richard		Agreement Number:
Airport ID: KZPH			Airport City: ZEPHYRHILLS		State: FL
Facility ID:	Facility Type:	Flight Inspection Remark Type: New FC Slot			
<div>Procedure Comments:</div> <div>RWY 1/19 EXTENDED. MOVED RWY 1 THRESHOLD 1507 FEET SOUTH AND REMOVED DISPLACED THRESHOLD.</div> <div>CANCELS FDC NOTAMS 3/2877 AND 3/2879.</div> <div>CANCELS AND REPLACES FDC NOTAM 3/2878 - DELETES CIRCLING RWY 1 NA.</div> <div>ACTIVE DATA USED FOR KZPH AIRPORT AND RUNWAYS.</div> <div>NEW CRC REMAINDER - 631B8F64.</div> <div>CONTACT: JOHN BORDY, AJV-A33, (405) 954-0980.</div> <div>QUALITY 20 CHECKED</div> <div>QUALITY 41 CHECKED</div>					

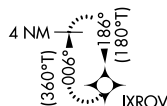
RNAV (GPS) RWY 1
ZEPHYRHILLS MUNI (ZPH)

MISSED APPROACH: Climb to 2000 direct IXROV and hold.

UNICOM
123.075 (CTAF) **L**



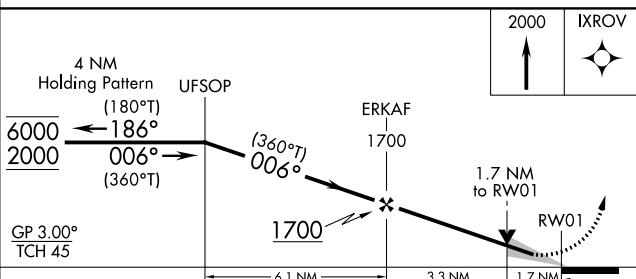
MISSED APCH FIX




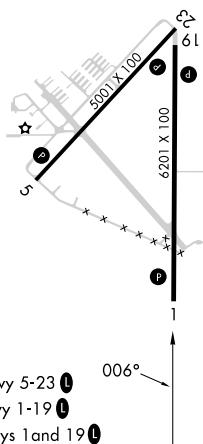
PROTOTYPE-NOT FOR NAVIGATION

829

TDZE 82



CATEGORY	A	B	C	D
LPV DA	332-7 ⁵ / ₈ 250 (300-7 ⁵ / ₈)			
LNAV/VNAV DA	553-1 ³ / ₈ 471 (500-1 ³ / ₈)			
LNAV MDA	660-1	578 (600-1)	660-1 ⁵ / ₈	578 (600-1 ⁵ / ₈)
 CIRCLING	700-1	610 (700-1)	740-1 ³ / ₄ 610 (700-1 ³ / ₄)	780-2 ¹ / ₄ 650 (700-2 ¹ / ₄)



AL-6963 (FAA)

23166

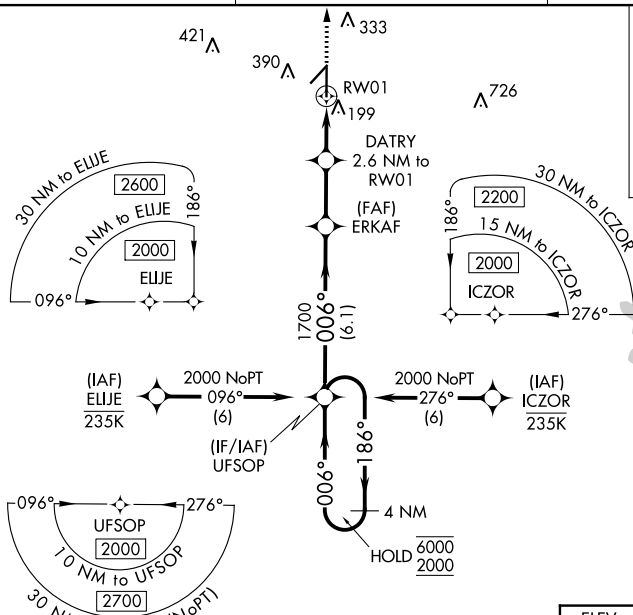
RNAV (GPS) RWY 1
ZEPHYRHILLS MUNI (ZPH)

T Rwy 1 helicopter visibility reduction below $\frac{3}{4}$ SM NA.
A For uncompensated Baro-VNAV systems, LNAV/VNAV NA below -15°C or above 54°C.

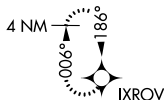
MISSED APPROACH: Climb to 2000 direct IXROV and hold.

AWOS-3PT
118.975

TAMPA APP CON
119.9 290.3

UNICOM
123.075 (CTAF) **L**

MISSED APCH FIX



△⁸²⁹

ELEV 90

TDZE 87

5201 X 100

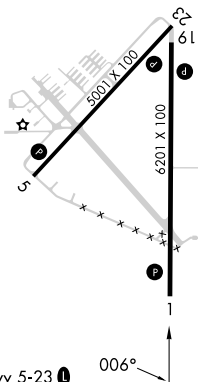
6201 X 100

006°

MIRL Rwy 5-23 (L)

HIRL Rwy 1-19 (L)

REIL Rwy 1 and 19 (L)



CATEGORY	A	B	C	D
LPV DA		337-7/8	250 (300-7/8)	
LNAV/VNAV DA		366-7/8	279 (300-7/8)	
LNAV MDA		460-1	373 (400-1)	

28°14'N-82°09'W

ZEPHYRHILLS MUNI (ZPH)
RNAV (GPS) RWY 1

SE-3, 30 NOV 2023 to 28 DEC 2023



ZEPHYRHILLS MUNI (ZPH)
ZEPHYRHILLS, FLORIDA
RNAV (GPS) RWY 1, AMDT 2
LEFT BASE TAA
1:500,000

CRITICAL AREA
to use the Tampa VFR
for flights at or below 10,000'

CLASS B ALTITUDES
in hundreds of feet MSL
in hundreds of feet MSL

TAA Left Base 096 CW 186
TOWER (1544) 12-003314

TAMPA INSET
chart for additional detail

100
60

ANCLOTE KEYS
SPECIAL STATE
CONSERVATION AREA

CALADESI ISLAND
SPECIAL STATE
CONSERVATION AREA

CLEARWATER BEACH
(VPEAR)

CLEARWATER MARriott (Pvt)
01-20

122.2 VORTAC
ST PETERSBURG
115.4 Ch 111 PIE

ST PETERSBURG

ST PETE BEACH
(VGPPE)

TAA Left Base 096 CW 186 Stepdown
TOWER (483) 12-002927

CAUTION
Heavy fast military jet traffic over
Tampa Bay to the northeast, east,
and south of MacDill AFB from 1000
to 2500 ft.

ZEPHYRHILLS MUNI (ZPH)
ZEPHYRHILLS, FLORIDA
RNAV (GPS) RWY 1, AMDT 2
RIGHT BASE TAA
1:500,000

TAA Right Base 186 CW 276 Stepdown
TOWER (726) 12-002037

TAA Right Base 186 CW 276
TOWER (1133) 12 002369

ZEPHYRHILLS MUNI (ZPH)
ZEPHYRHILLS, FLORIDA
RNAV (GPS) RWY 1, AMDT 2
1:500,000

Missed Level Surface
TOWER (419) 12-000379

LNAV ERKAF to RW01
CRANE (392) 12-195430

Initial ICZOR to UFSOP
TOWER (540) 12-003386

Initial ELIJE to UFSOP
Intermediate UFSOP to ERKAF
TOWER (418) 12-001581

UFSOP HILO
TOWER (418) 12-001581

CAUTION
Heavy fast military jet traffic over
Tampa Bay to the northeast, east,
and south of MacDill AFB from 1000
to 2500 ft.

