

Flight Procedures Cover Page	Task Action: FLIGHT CHECK	Task Type: IAP	Estimated Chart Date: 06/12/2025	APWS Task ID: 4379A99C6E4E46328EFC8E175D5233FE	APWS Project ID: 3DFD29827F7C401DAF32004AEE0F180A
Procedure: ILS OR LOC RWY 30 AMDT 4		Enroute: NO	Specialist: Neidigh, Jon		Agreement Number:
Airport ID: KOPN			Airport City: THOMASTON		State: GA
Facility ID: OPN	Facility Type: ILS	Flight Inspection Remark Type: New FC Slot			
<div>Procedure Comments: ACTIVE AIRPORT DATA USED AND PENDING ILS (I-OPN) DATA USED REMOVED YATES NDB OM AND CHANGED MISSED APPROACH FROM CONVENTIONAL TO RNAV CONTACT CASIMIR TABAKA 405-954-7931</div>					
<div><div>QUALITY 38 CHECKED</div><div>QUALITY 29 CHECKED</div></div>					

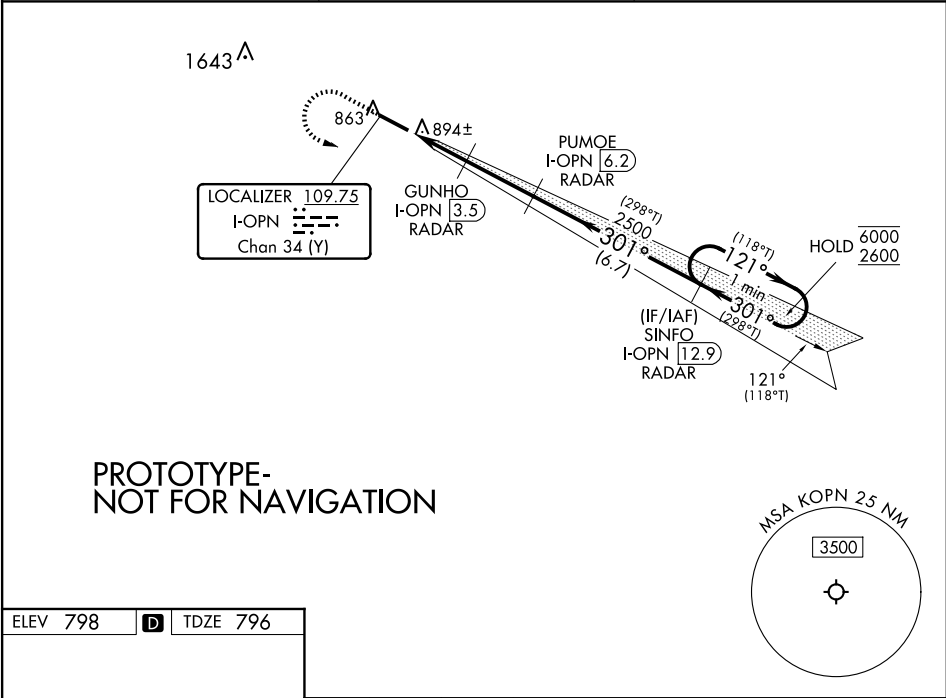
FIPC BASIC FORM									
PROCEDURE: ILS OR LOC RWY 30 AMDT 4			AIRPORT NAME: THOMASTON-UPSON COUNTY		AIRPORT ID: KOPN		SPECIAL CONTROL NO: AP-02-054-25		
FAC ID: OPN		CITY: THOMASTON			ST: GA		ORIG CHART DATE: 06/12/2025		
DFL TYPE: PROC/AR	THIRD PARTY: <input type="checkbox"/> YES	EST. TIME ON SITE: 0.4	REIMB. NUMBER:		PTS TASK ID: 4379A99C6E4E46328EFC8E175D5233FE				
PREFLIGHT NOTES									
REVIEWER:						DATE:			
COMMENTS:						CHECK ONE:			
						<input type="checkbox"/> FLT CK REQ <input type="checkbox"/> NFCR <input type="checkbox"/> REJECT			
								YES	NO
						CPV COMPLETE?		X	
PROCEDURE RESULTS									
INSPECTION DATE: 03/01/2025		CREW #: VN335	N #: N67	INSTRUMENT PROCEDURE STATUS: <input checked="" type="checkbox"/> SAT <input type="checkbox"/> SAT W/CHANGES <input type="checkbox"/> UNSAT		ARINC CODING: <input checked="" type="checkbox"/> SAT <input type="checkbox"/> SAT/GOLD <input type="checkbox"/> UNSAT			
FLIGHT INSPECTOR SIGNATURE: george e searles @ 03/01/2025 19:06			PRINTED NAME: SEARLES, GEORGE EDWARD				NOTAM INITIATED? <input type="checkbox"/> YES <input checked="" type="checkbox"/> NO		
FLIGHT INSPECTOR REMARKS:									
IN-FLIGHT OBSTACLE REPORT									
OBSTRUCTION ID #:		COORDINATES OR LOCATION:		GNSS ALTITUDE (MSL):		BAROMETRIC ALTITUDE (MSL):		HEIGHT ABOVE GROUND LEVEL:	

LOC/DME I-OPN 109.75 Chan 34 (Y)	APP CRS 301°	Rwy Idg 4962 TDZE 796 Apt Elev 798
--	------------------------	---

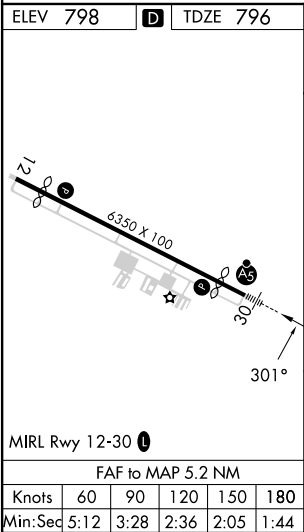
ILS or LOC RWY 30
THOMASTON-UPSON COUNTY (OPN)

RNP APCH - GPS. DME or RADAR required.	MALSR 	MISSED APPROACH: Climb to 1500 then climbing left turn to 2600 direct SINFO and hold.
For inop ALS, increase S-LOC 30 Cats C, D visibility to 1 SM.		

AWOS-3 133.975	ATLANTA APP CON ★ 124.2 279.6	UNICOM 122.8 (CTAF)
--------------------------	---	-------------------------------



PROTOTYPE-
NOT FOR NAVIGATION



1500	2600	SINFO I-OPN (12.9) RADAR	VGSI and ILS glidepath not coincident (VGSI Angle 3.00/TCH 27).	SINFO I-OPN (12.9) RADAR	2500	6000	2600
I-OPN (1)	I-OPN (2.1)	GUNHO I-OPN (3.5) RADAR		PUMOE I-OPN (6.2) RADAR			
1640	2500	2500	301°	301°	121°	6000	2600
1.1 NM	1.4 NM	2.7 NM	6.7 NM				
CATEGORY	A	B	C	D			
S-ILS 30	1016-1/2 220 (300-1/2)						
S-LOC 30	1160-1/2 364 (400-1/2)		1160-5/8 364 (400-3/8)				
CIRCLING	1240-1 442 (500-1)	1260-1 462 (500-1)	1260-1/2 462 (500-1/2)	1680-3 882 (900-3)			



THOMASTON, GEORGIA

AL-9190 (FAA)

22083

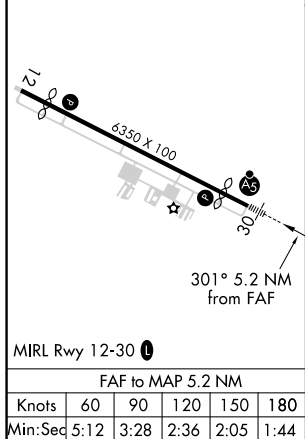
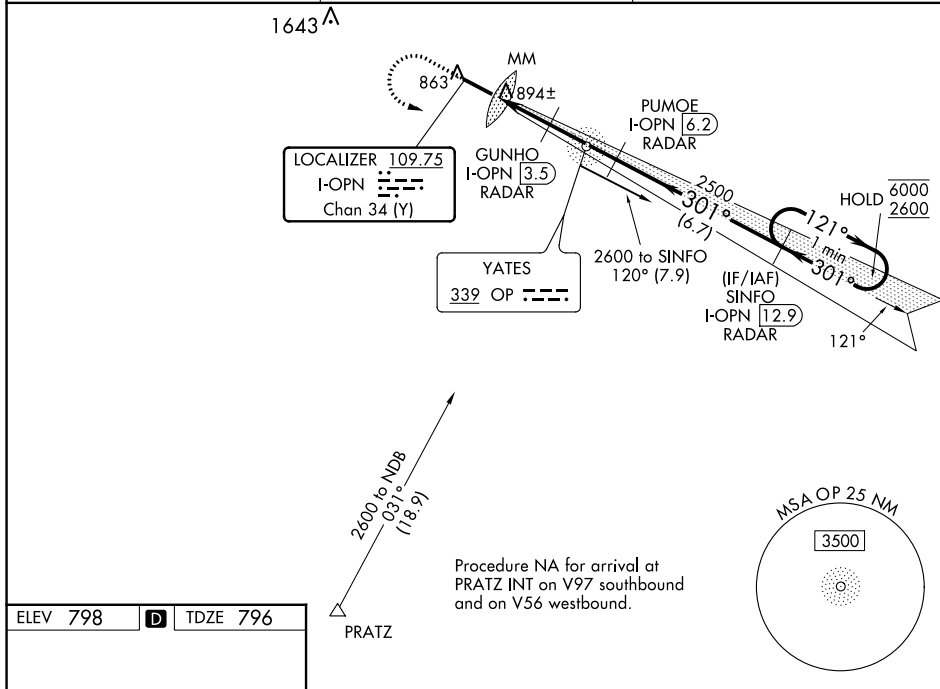
LOC/DME I-OPN 109.75 Chan 34 (Y)	APP CRS 301°	Rwy Idg 4962 TDZE 796 Apt Elev 798
--	------------------------	---


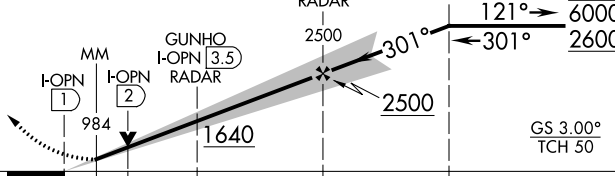
ILS or LOC RWY 30

THOMASTON-UPSON COUNTY (OPN)

ADF required for procedure entry. DME or RADAR required.	MALSR 	MISSED APPROACH: Climb to 1500 then climbing left turn to 2600 direct OP NDB and brg 120° to SINFO/I-OPN 12.9 DME/RADAR and hold.
For inop ALS, increase S-LOC 30 Cats C, D visibility to 1 SM.		

AWOS-3 133.975	ATLANTA APP CON ★ 124.2 279.6	UNICOM 122.8 (CTAF) 1
--------------------------	---	--



1500 ↑	2600 ↷	OP brg 120° 	SINFO I-OPN 12.9 RADAR	VGSI and ILS glidepath not coincident (VGSI Angle 3.00/TCH 27).
			PUMOE I-OPN 6.2 RADAR	SINFO I-OPN 12.9 RADAR
 <p>The diagram illustrates the approach procedure. It shows a horizontal reference line at the bottom with distances of 0.4, 0.6, 1.5 NM, 2.7 NM, and 6.7 NM marked. Above this line, a dashed line represents the ILS glide path, and a solid line represents the VGSI glide path. The VGSI glide path is labeled with an angle of 3.00° and a TCH of 50. The ILS glide path is labeled with an angle of 301°. The VGSI glide path is labeled with an angle of 121°. The ILS glide path is labeled with an angle of 301°. The VGSI glide path is labeled with an angle of 301°. The ILS glide path is labeled with an angle of 301°. The VGSI glide path is labeled with an angle of 301°. The ILS glide path is labeled with an angle of 301°. The VGSI glide path is labeled with an angle of 301°. The ILS glide path is labeled with an angle of 301°. The VGSI glide path is labeled with an angle of 301°. The ILS glide path is labeled with an angle of 301°. The VGSI glide path is labeled with an angle of 301°. The ILS glide path is labeled with an angle of 301°. The VGSI glide path is labeled with an angle of 301°. The ILS glide path is labeled with an angle of 301°. The VGSI glide path is labeled with an angle of 301°. The ILS glide path is labeled with an angle of 301°. The VGSI glide path is labeled with an angle of 301°. The ILS glide path is labeled with an angle of 301°. The VGSI glide path is labeled with an angle of 301°. The ILS glide path is labeled with an angle of 301°. The VGSI glide path is labeled with an angle of 301°. The ILS glide path is labeled with an angle of 301°. The VGSI glide path is labeled with an angle of 301°. The ILS glide path is labeled with an angle of 301°. The VGSI glide path is labeled with an angle of 301°. The ILS glide path is labeled with an angle of 301°. The VGSI glide path is labeled with an angle of 301°. The ILS glide path is labeled with an angle of 301°. The VGSI glide path is labeled with an angle of 301°. The ILS glide path is labeled with an angle of 301°. The VGSI glide path is labeled with an angle of 301°. The ILS glide path is labeled with an angle of 301°. The VGSI glide path is labeled with an angle of 301°. The ILS glide path is labeled with an angle of 301°. The VGSI glide path is labeled with an angle of 301°. The ILS glide path is labeled with an angle of 301°. The VGSI glide path is labeled with an angle of 301°. The ILS glide path is labeled with an angle of 301°. The VGSI glide path is labeled with an angle of 301°. The ILS glide path is labeled with an angle of 301°. The VGSI glide path is labeled with an angle of 301°. The ILS glide path is labeled with an angle of 301°. The VGSI glide path is labeled with an angle of 301°. The ILS glide path is labeled with an angle of 301°. The VGSI glide path is labeled with an angle of 301°. The ILS glide path is labeled with an angle of 301°. The VGSI glide path is labeled with an angle of 301°. The ILS glide path is labeled with an angle of 301°. The VGSI glide path is labeled with an angle of 301°. The ILS glide path is labeled with an angle of 301°. The VGSI glide path is labeled with an angle of 301°. The ILS glide path is labeled with an angle of 301°. The VGSI glide path is labeled with an angle of 301°. The ILS glide path is labeled with an angle of 301°. The VGSI glide path is labeled with an angle of 301°. The ILS glide path is labeled with an angle of 301°. The VGSI glide path is labeled with an angle of 301°. The ILS glide path is labeled with an angle of 301°. The VGSI glide path is labeled with an angle of 301°. The ILS glide path is labeled with an angle of 301°. The VGSI glide path is labeled with an angle of 301°. The ILS glide path is labeled with an angle of 301°. The VGSI glide path is labeled with an angle of 301°. The ILS glide path is labeled with an angle of 301°. The VGSI glide path is labeled with an angle of 301°. The ILS glide path is labeled with an angle of 301°. The VGSI glide path is labeled with an angle of 301°. The ILS glide path is labeled with an angle of 301°. The VGSI glide path is labeled with an angle of 301°. The ILS glide path is labeled with an angle of 301°. The VGSI glide path is labeled with an angle of 301°. The ILS glide path is labeled with an angle of 301°. The VGSI glide path is labeled with an angle of 301°. The ILS glide path is labeled with an angle of 301°. The VGSI glide path is labeled with an angle of 301°. The ILS glide path is labeled with an angle of 301°. The VGSI glide path is labeled with an angle of 301°. The ILS glide path is labeled with an angle of 301°. The VGSI glide path is labeled with an angle of 301°. The ILS glide path is labeled with an angle of 301°. The VGSI glide path is labeled with an angle of 301°. The ILS glide path is labeled with an angle of 301°. The VGSI glide path is labeled with an angle of 301°. The ILS glide path is labeled with an angle of 301°. The VGSI glide path is labeled with an angle of 301°. The ILS glide path is labeled with an angle of 301°. The VGSI glide path is labeled with an angle of 301°. The ILS glide path is labeled with an angle of 301°. The VGSI glide path is labeled with an angle of 301°. The ILS glide path is labeled with an angle of 301°. The VGSI glide path is labeled with an angle of 301°. The ILS glide path is labeled with an angle of 301°. The VGSI glide path is labeled with an angle of 301°. The ILS glide path is labeled with an angle of 301°. The VGSI glide path is labeled with an angle of 301°. The ILS glide path is labeled with an angle of 301°. The VGSI glide path is labeled with an angle of 301°. The ILS glide path is labeled with an angle of 301°. The VGSI glide path is labeled with an angle of 301°. The ILS glide path is labeled with an angle of 301°. The VGSI glide path is labeled with an angle of 301°. The ILS glide path is labeled with an angle of 301°. The VGSI glide path is labeled with an angle of 301°. The ILS glide path is labeled with an angle of 301°. The VGSI glide path is labeled with an angle of 301°. The ILS glide path is labeled with an angle of 301°. The VGSI glide path is labeled with an angle of 301°. The ILS glide path is labeled with an angle of 301°. The VGSI glide path is labeled with an angle of 301°. The ILS glide path is labeled with an angle of 301°. The VGSI glide path is labeled with an angle of 301°. The ILS glide path is labeled with an angle of 301°. The VGSI glide path is labeled with an angle of 301°. The ILS glide path is labeled with an angle of 301°. The VGSI glide path is labeled with an angle of 301°. The ILS glide path is labeled with an angle of 301°. The VGSI glide path is labeled with an angle of 301°. The ILS glide path is labeled with an angle of 301°. The VGSI glide path is labeled with an angle of 301°. The ILS glide path is labeled with an angle of 301°. The VGSI glide path is labeled with an angle of 301°. The ILS glide path is labeled with an angle of 301°. The VGSI glide path is labeled with an angle of 301°. The ILS glide path is labeled with an angle of 301°. The VGSI glide path is labeled with an angle of 301°. The ILS glide path is labeled with an angle of 301°. The VGSI glide path is labeled with an angle of 301°. The ILS glide path is labeled with an angle of 301°. The VGSI glide path is labeled with an angle of 301°. The ILS glide path is labeled with an angle of 301°. The VGSI glide path is labeled with an angle of 301°. The ILS glide path is labeled with an angle of 301°. The VGSI glide path is labeled with an angle of 301°. The ILS glide path is labeled with an angle of 301°. The VGSI glide path is labeled with an angle of 301°. The ILS glide path is labeled with an angle of 301°. The VGSI glide path is labeled with an angle of 301°. The ILS glide path is labeled with an angle of 301°. The VGSI glide path is labeled with an angle of 301°. The ILS glide path is labeled with an angle of 301°. The VGSI glide path is labeled with an angle of 301°. The ILS glide path is labeled with an angle of 301°. The VGSI glide path is labeled with an angle of 301°. The ILS glide path is labeled with an angle of 301°. The VGSI glide path is labeled with an angle of 301°. The ILS glide path is labeled with an angle of 301°. The VGSI glide path is labeled with an angle of 301°. The ILS glide path is labeled with an angle of 301°. The VGSI glide path is labeled with an angle of 301°. The ILS glide path is labeled with an angle of 301°. The VGSI glide path is labeled with an angle of 301°. The ILS glide path is labeled with an angle of 301°. The VGSI glide path is labeled with an angle of 301°. The ILS glide path is labeled with an angle of 301°. The VGSI glide path is labeled with an angle of 301°. The ILS glide path is labeled with an angle of 301°. The VGSI glide path is labeled with an angle of 301°. The ILS glide path is labeled with an angle of 301°. The VGSI glide path is labeled with an angle of 301°. The ILS glide path is labeled with an angle of 301°. The VGSI glide path is labeled with an angle of 301°. The ILS glide path is labeled with an angle of 301°. The VGSI glide path is labeled with an angle of 301°. The ILS glide path is labeled with an angle of 301°. The VGSI glide path is labeled with an angle of 301°. The ILS glide path is labeled with an angle of 301°. The VGSI glide path is labeled with an angle of 301°. The ILS glide path is labeled with an angle of 301°. The VGSI glide path is labeled with an angle of 301°. The ILS glide path is labeled with an angle of 301°. The VGSI glide path is labeled with an angle of 301°. The ILS glide path is labeled with an angle of 301°. The VGSI glide path is labeled with an angle of 301°. The ILS glide path is labeled with an angle of 301°. The VGSI glide path is labeled with an angle of 301°. The ILS glide path is labeled with an angle of 301°. The VGSI glide path is labeled with an angle of 301°. The ILS glide path is labeled with an angle of 301°. The VGSI glide path is labeled with an angle of 301°. The ILS glide path is labeled with an angle of 301°. The VGSI glide path is labeled with an angle of 301°. The ILS glide path is labeled with an angle of 301°. The VGSI glide path is labeled with an angle of 301°. The ILS glide path is labeled with an angle of 301°. The VGSI glide path is labeled with an angle of 301°. The ILS glide path is labeled with an angle of 301°. The VGSI glide path is labeled with an angle of 301°. The ILS glide path is labeled with an angle of 301°. The VGSI glide path is labeled with an angle of 301°. The ILS glide path is labeled with an angle of 301°. The VGSI glide path is labeled with an angle of 301°. The ILS glide path is labeled with an angle of 301°. The VGSI glide path is labeled with an angle of 301°. The ILS glide path is labeled with an angle of 301°. The VGSI glide path is labeled with an angle of 301°. The ILS glide path is labeled with an angle of 301°. The VGSI glide path is labeled with an angle of 301°. The ILS glide path is labeled with an angle of 301°. The VGSI glide path is labeled with an angle of 301°. The ILS glide path is labeled with an angle of 301°. The VGSI glide path is labeled with an angle of 301°. The ILS glide path is labeled with an angle of 301°. The VGSI glide path is labeled with an angle of 301°. The ILS glide path is labeled with an angle of 301°. The VGSI glide path is labeled with an angle of 301°. The ILS glide path is labeled with an angle of 301°. The VGSI glide path is labeled with an angle of 301°. The ILS glide path is labeled with an angle of 301°. The VGSI glide path is labeled with an angle of 301°. The ILS glide path is labeled with an angle of 301°. The VGSI glide path is labeled with an angle of 301°. The ILS glide path is labeled with an angle of 301°. The VGSI glide path is labeled with an angle of 301°. The ILS glide path is labeled with an angle of 301°. The VGSI glide path is labeled with an angle of 301°. The ILS glide path is labeled with an angle of 301°. The VGSI glide path is labeled with an angle of 301°. The ILS glide path is labeled with an angle of 301°. The VGSI glide path is labeled with an angle of 301°. The ILS glide path is labeled with an angle of 301°. The VGSI glide path is labeled with an angle of 301°. The ILS glide path is labeled with an angle of 301°. The VGSI glide path is labeled with an angle of 301°. The ILS glide path is labeled with an angle of 301°. The VGSI glide path is labeled with an angle of 301°. The ILS glide path is labeled with an angle of 301°. The VGSI glide path is labeled with an angle of 301°. The ILS glide path is labeled with an angle of 301°. The VG</p>				

THOMASTON, GEORGIA
Amdt 3 24MAR22

32°57'N-84°16'W

THOMASTON-UPSON COUNTY (OPN)
ILS or LOC RWY 30

SE-4, 31 OCT 2024 to 28 NOV 2024

KOPN, THOMASTON-UPSON COUNTY
THOMASTON, GA
ILS OR LOC RWY 30, AMDT 4
ILS
1:500,000

**Missed Level Surface
TOWER (1524)
13-166883**

**Missed HAT
TERRAIN+VEG (908)**

**SINFO to PUMOE
TOWER (1194)
13-003327**

**SINFO HOLDING
TOWER (1194)
13-003327**

PUMOE

SINFO

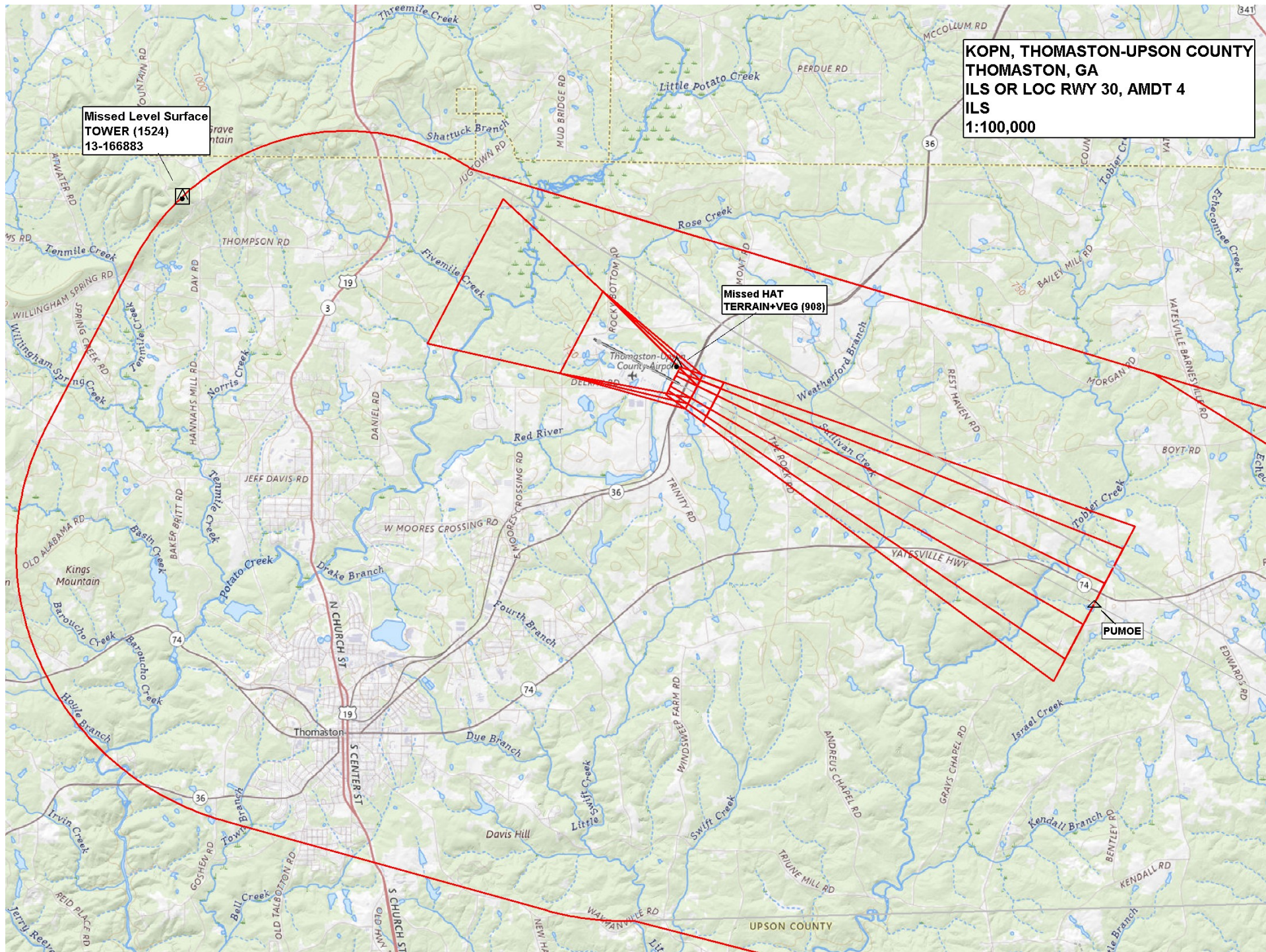
ATLANTA TERMINAL AREA

Pilots are encouraged to use the Atlanta VFR Terminal Area Chart for flights at and below 12,500'

EXAMPLES OF CLASS B ALTITUDES

Ceiling in hundreds of feet MSI

Floor in hundreds of feet MSL



Missed Level Surface
TOWER (1524)
13-166883

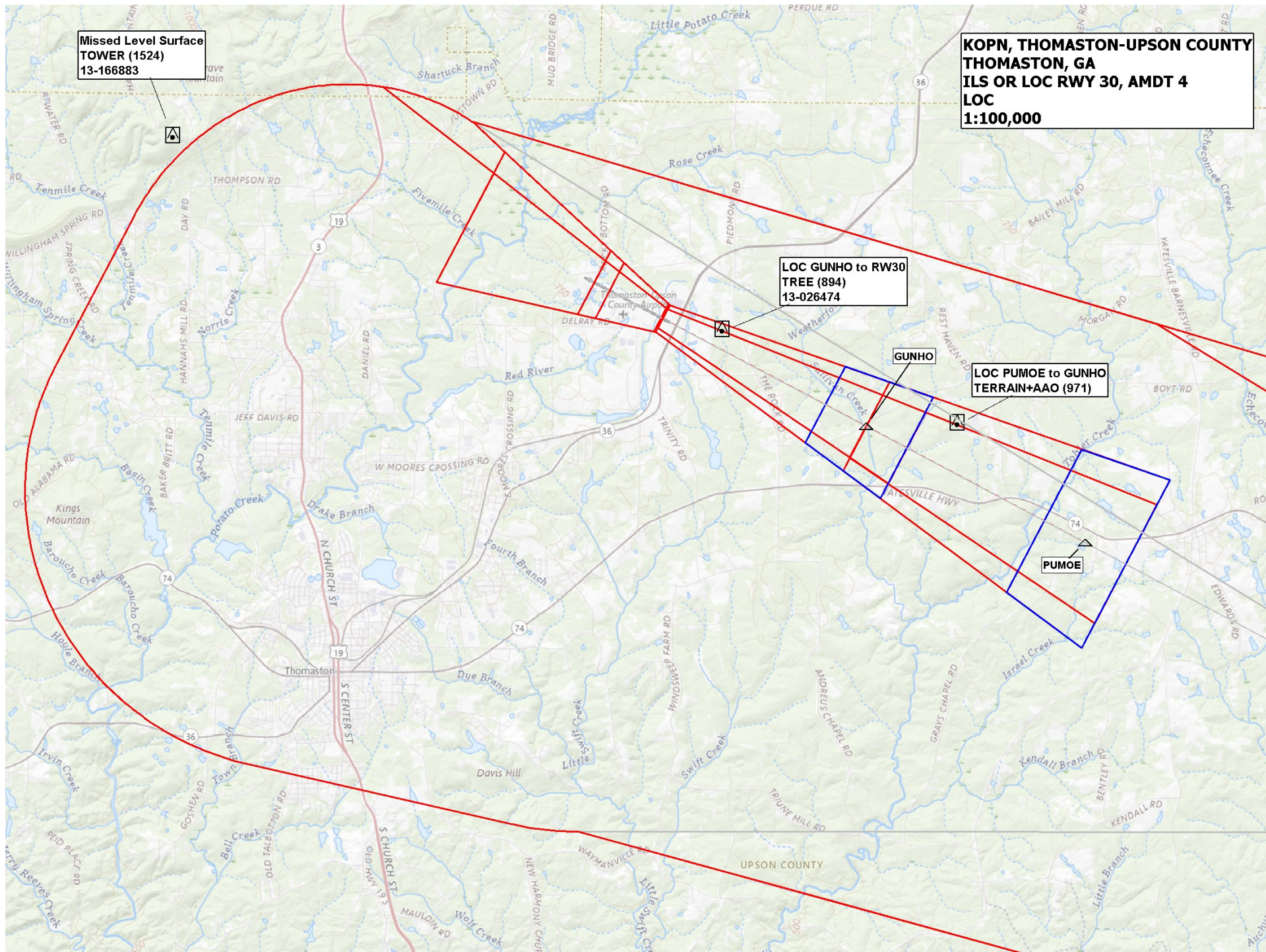
KOPN, THOMASTON-UPSON COUNTY
THOMASTON, GA
ILS OR LOC RWY 30, AMDT 4
LOC
1:100,000

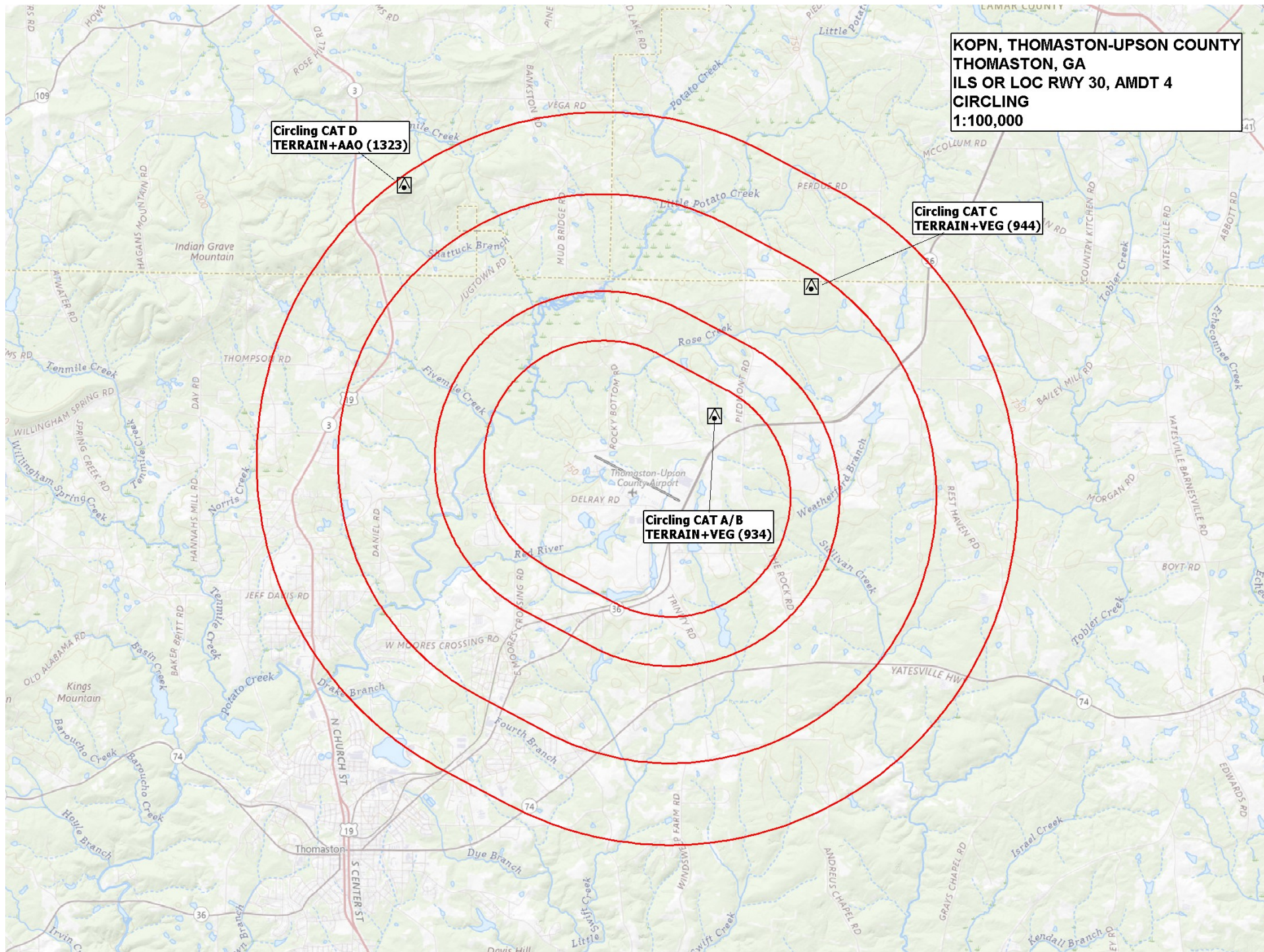
LOC GUNHO to RW30
TREE (894)
13-026474

LOC PUMOE to GUNHO
TERRAIN+AAO (971)

GUNHO

PUMOE





KOPN, THOMASTON-UPSON COUNTY
THOMASTON, GA
ILS OR LOC RWY 30, AMDT 4
CIRCLING
1:100,000

Circling CAT D
TERRAIN+AAO (1323)

Circling CAT C
TERRAIN+VEG (944)

Circling CAT A/B
TERRAIN+VEG (934)