

Flight Procedures Cover Page	Task Action: P-NOTAM	Task Type: IAP	Estimated Chart Date: 04/21/2022	APWS Task ID: 43790AC066204187824224EDA0EFBF05	APWS Project ID: CF88A073A5B14938A889666F56709B4B
Procedure: RNAV (GPS) RWY 16 AMDT 0B		Enroute: NO	Specialist: Sickels, Dale		Agreement Number:
Airport ID: KETH			Airport City: WHEATON		State: MN
Facility ID:	Facility Type:	Flight Inspection Remark Type:			
<div>Procedure Comments: P-NOTAM</div> <div>Order 8260.3, Chapter 2, New Circling Criteria Applied.</div> <div>Contact Jason Kretschmer, AJV-A421, 405-954-4019</div> <div><div>Digitally signed by JASON KRETSCHMER Feb 09, 2022</div><div><div>QUALITY 9 CHECKED</div><div>QUALITY 47 CHECKED</div></div></div>					

WAAS CH 42530 W16A	APP CRS 159°	Rwy Idg TDZE 1023 Apt Elev 1023	3298 1023 1023
--	------------------------	---	---

RNAV (GPS) RWY 16

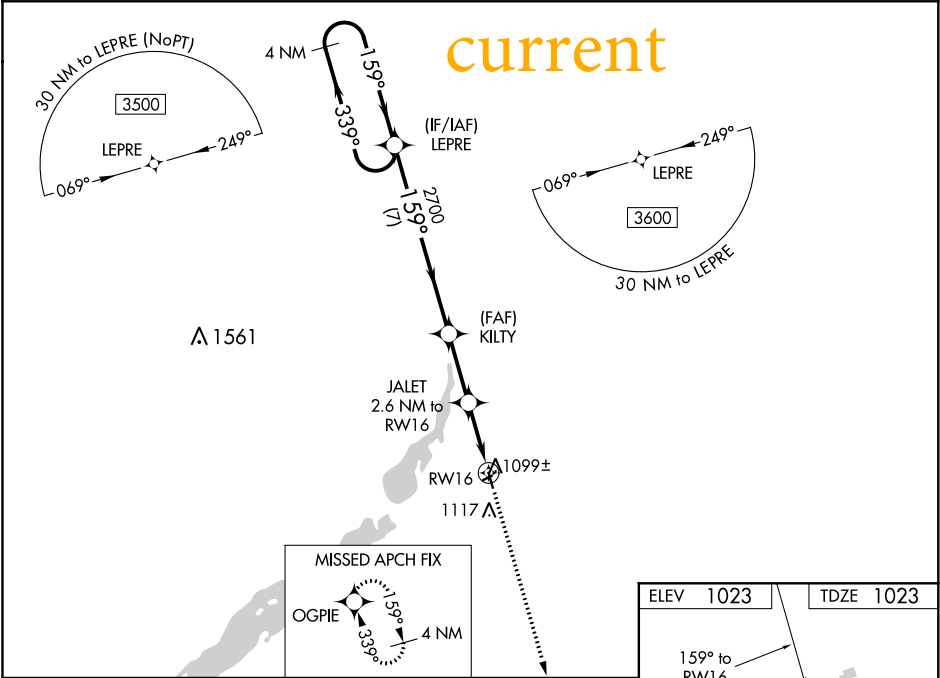
WHEATON MUNI (ETH)

⚠

When VGSI inop, Circling Rwy 34 NA at night. DME/DME RNP-0.3 NA. Visibility reduction by helicopters NA. VDP NA with Wahpeton/Harry Stern altimeter setting. When local altimeter setting not received, use Wahpeton/Harry Stern altimeter setting and increase all MDA 80 feet, increase LP Cat C visibility to 1½ and LNAV Cat C visibility to 1¼ mile.

MISSED APPROACH: Climb to 3500 direct OGPIE and hold.

AWOS-3 118.775	MINNEAPOLIS CENTER 126.1 269.2	UNICOM 122.8 (CTAF) 0
--------------------------	--	---------------------------------



VGSI and descent angles not coincident (VGSI Angle 3.00/TCH 25).				
<div>4 NM Holding Pattern</div> <div>3500 ← 339° 159° → 2700</div> <div>LEPRE</div> <div>KILTY</div> <div>JALET 2.6 NM to RW16</div> <div>3.00° TCH 40</div> <div>1880</div> <div>0.9 NM to RW16</div> <div>RW16</div> <div>7 NM 2.6 NM 1.6 0.9</div>				
CATEGORY	A	B	C	D
LP MDA	1340-1		317 (400-1)	NA
LNAV MDA	1360-1		337 (400-1)	NA
CIRCLING	1480-1 457 (500-1)		1480-1½ 457 (500-1½)	NA

