

Flight Procedures Cover Page	Task Action: P-NOTAM	Task Type: IAP	Estimated Chart Date: 10/08/2020	APWS Task ID: 41325CBA42AB42BBA8871ABBE846704F	APWS Project ID: 4AD6CFE5AF644C55986BE985521BBA8B
Procedure: RNAV (GPS) RWY 14 AMDT 0B		Enroute: NO	Specialist: Barnes, Kellie		Agreement Number:
Airport ID: KLNL	Airport Name: KINGS LAND O' LAKES		Airport City: LAND O' LAKES		State: WI
Facility ID:	Facility Type:	Flight Inspection Remark Type:			
<div>Procedure Comments: P-NOTAM</div> <div>ACTIVE DATA USED</div> <div>CIRCLING ICON - NO CHANGES TO CIRCLING MDAS WITH EXPANDED AREA</div> <div>PROCESSED IAW AIRCRAFT OPERATIONS GROUP (AJF-10) MEMO, APRIL 29, 2020 SUBJECT: FLIGHT INSPECTION REVIEW NOT REQUIRED.</div> <div>CONTACT DAVID DANNER 405-954-5077</div> <div><div>QUALITY 30 CHECKED</div><div>7/28 BBLUE</div><div><div>QUALITY 41 CHECKED</div></div></div>					

APP CRS	Rwy Idg	3802 (day)
145°	TDZE	3601 (night)
	Apt Elev	1704

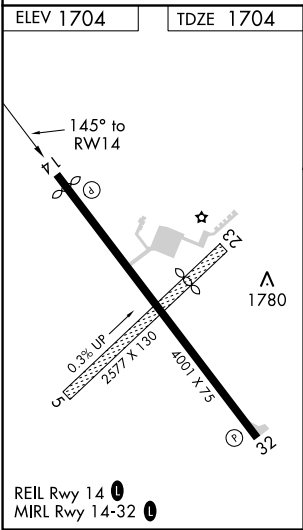
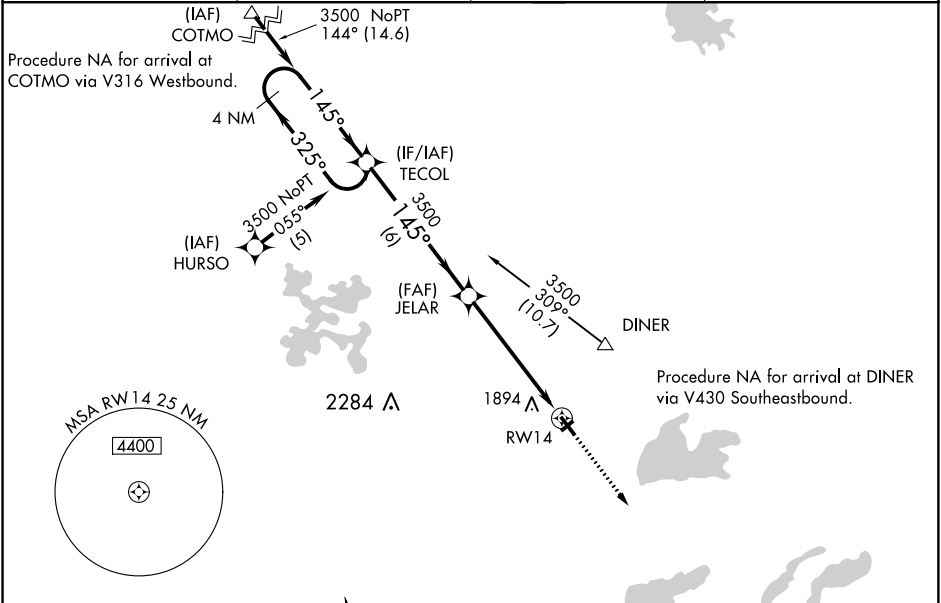
OLD

RNAV (GPS) RWY 14
KINGS LAND O'LAKES (LNL)

If local altimeter setting not received, use Eagle River Union altimeter setting and increase all MDAs 40 feet. Helicopter visibility reduction below 1 SM NA. Circling Rwy 32 NA at night. Circling NA to Rwy 5 and 23. DME/DME RNP- 0.3 NA.

MISSED APPROACH: Climb to 3500 direct TOLOY and hold.

AWOS-3 119.525	MINNEAPOLIS CENTER 133.65 281.5	GCO 121.725	UNICOM 122.8 (CTAF) 0
-------------------	------------------------------------	----------------	--------------------------



4 NM Holding Pattern

Procedure NA for arrival at JAYME via V63 Southwestbound.

TOLOY 4 NM

3500 TOLOY

TECOL

JELAR

3500

325°

145°

3.00° TCH 35

6 NM

5.5 NM

RW14

CATEGORY	A	B	C	D
LNAV MDA	2220-1	516 (600-1)	2220-1½	NA
CIRCLING	2220-1	2240-1	2240-1½	NA
	516 (600-1)	536 (600-1)	536 (600-1½)	

CATEGORY	A	B	C	D
LNAV MDA	2220-1	516 (600-1)	2220-1½	NA
CIRCLING	2220-1	2240-1	2240-1½	NA
	516 (600-1)	536 (600-1)	536 (600-1½)	

EC-3, 26 MAR 2020 to 23 APR 2020

EC-3, 26 MAR 2020 to 23 APR 2020

