

Flight Procedures Cover Page	Task Action: Cancellation	Task Type: IAP	Estimated Chart Date: 06/15/2023	APWS Task ID: 409EA06C54964F03AF3EDE490535F84E	APWS Project ID: DF126B997BCA405B820E6E7B684DAF9B
Procedure: VOR RWY 20 AMDT 0F		Enroute: NO	Specialist: Dumar, Ralph		Agreement Number:
Airport ID: KBYL			Airport City: WILLIAMSBURG		State: KY
Facility ID: LOZ	Facility Type: VOR_DME	Flight Inspection Remark Type:			
<div>Procedure Comments: REMARKS: CANCELED TO CLEAR T-NOTAM 2/8612 CONTACT RAKE MCGRAW (405) 954-8711</div> <div>02/16/2023</div> <div>QUALITY 14 CHECKED</div>					

VOR/DME LOZ	APP CRS	Rwy Idg	5499
116.55	200°	TDZE	1178
Chan 112 (Y)		Apt Elev	1178

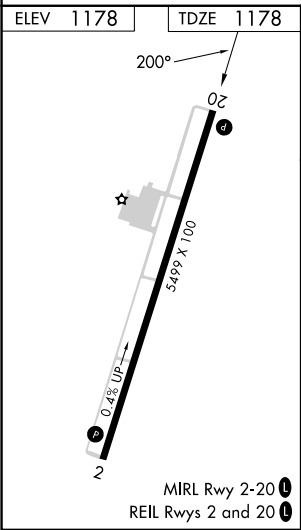
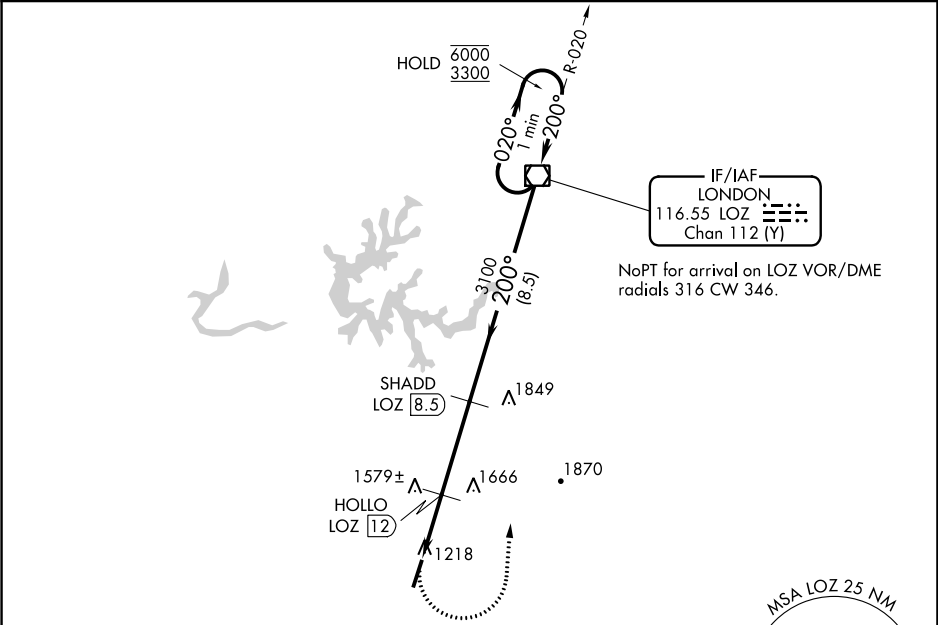
CANCEL

VOR RWY 20

WILLIAMSBURG-WHITLEY COUNTY (BYL)

DME required.	MISSED APPROACH: Climbing left turn to 4000 direct LOZ VOR/DME and hold.
Rwy 20 helicopter visibility reduction below ¾ SM NA. VDP NA when using London altimeter setting. When local altimeter setting not received, use London altimeter setting and increase all MDA 60 feet and S-20 Cat C and D visibility ½ SM.	
17°C	

AWOS-3 119.575	INDIANAPOLIS CENTER 124.625 371.925	UNICOM 122.7 (CTAF) 0
-------------------	--	--------------------------



1930 Δ		1766 Δ		<div><div>3400</div><div><div><div></div><div>270°</div></div><div>020°</div><div>4400</div></div></div>	
2341± Δ					
4000	LOZ	One Minute Holding Pattern			
<div><div></div><div></div></div>					
LOZ 14.5		SHLOLO LOZ 12		LOZ VOR/DME	
$\leq 2.98^\circ$		SHADD LOZ 8.5			
TCH 30					
LOZ 12.6		3100		020° → 6000	
		2000		← 200° 3300	
1.9 NM		0.6 NM		8.5 NM	
		3.5 NM			
CATEGORY	A	B	C	D	
S-20	1840-1	662 (700-1)	1840-1 $\frac{7}{8}$	662 (700-1 $\frac{7}{8}$)	
CIRCLING	1840-1	1860-1	2240-3	2260-3	
	662 (700-1)	682 (700-1)	1062 (1100-3)	1082 (1100-3)	