

|   |   |                                |                                     |   |  |
|---|---|--------------------------------|-------------------------------------|---|--|
| Flight Procedures Cover Page  | Task Action:<br>P-NOTAM                 | Task Type:<br>IAP              | Estimated Chart Date:<br>10/08/2020 | APWS Task ID:<br>4072C8528E8D44089C25F128864ACFD4 | APWS Request ID:<br>24F1333759AB44CB88E2DA26AA0CA811 |
| Procedure:<br>RNAV (GPS) RWY 28 AMDT 0C   |   | Enroute:<br>NO                 | Specialist:<br>Barnes, Kellie       |   | Agreement Number:                                    |
| Airport ID:<br>KSUE   | Airport Name:<br>DOOR COUNTY CHERRYLAND |                                | Airport City:<br>STURGEON BAY       |   | State:<br>WI   |
| Facility ID:  | Facility Type:                          | Flight Inspection Remark Type: |                                     |   |  |
| <div> <div> Procedure Comments:<br/>P-NOTAM<br/><br/> ACTIVE DATA USED<br/><br/> CIRCILNG ICON - NO CHANGES TO MDA/HAA WITH APPLICATION OF EXPANDED CIRCLING CRITERIA<br/><br/> PROCESSED IAW AIRCRAFT OPERATIONS GROUP (AJW-33) MEMO, OCTOBER 3, 2018, SUBJECT: FLIGHT INSPECTION REVIEW NOT REQUIRED.<br/><br/> CONTACT DAVID DANNER 405-954-5077 </div> <div>  7/28 BBLUE </div> <div>  </div> </div> |   |                                |                                     |   |  |

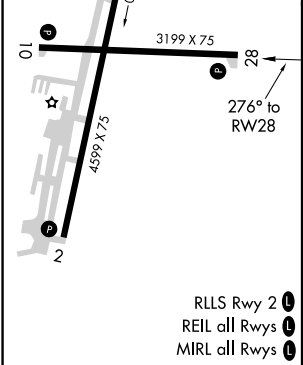
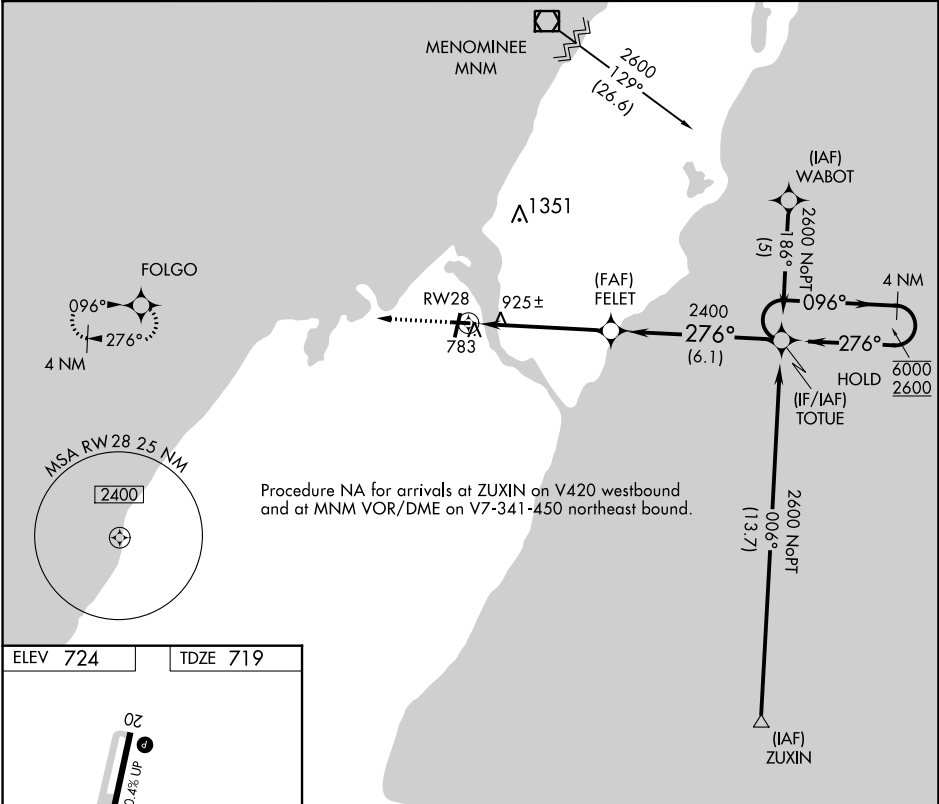
|         |          |      |
|---------|----------|------|
| APP CRS | Rwy Idg  | 3199 |
| 276°    | TDZE     | 719  |
|         | Apt Elev | 724  |



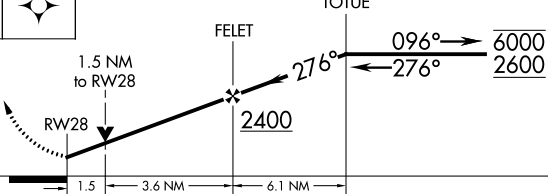
OLD

RNAV (GPS) RWY 28  
DOOR COUNTY CHERRYLAND (SUE)

|  |   |
|--|---|
| RNP APCH.  | MISSED APPROACH: Climb to 2600 direct FOLGO and hold. |
| ▼<br>▲ Rwy 28 helicopter visibility reduction below ¾ SM NA. |   |

|                   |                                     |                          |
|-------------------|-------------------------------------|--------------------------|
| AWOS-3<br>128.325 | GREEN BAY APP CON ★<br>119.25 338.2 | UNICOM<br>122.7 (CTAF) 0 |
|-------------------|-------------------------------------|--------------------------|



|   |  |   |  |   |  |                         |  |    |  |
|---|--|---|--|---|--|-------------------------|--|----|--|
| 2600  |  | FOLGO   |  | Visual Segment - Obstacles.   |  | 4 NM Holding Pattern    |  |    |  |
|  |  |  |  |  |  |                         |  |    |  |
| CATEGORY  |  | A   |  | B   |  | C                       |  | D  |  |
| LNAV MDA  |  | 1240-1  |  | 521 (600-1)   |  | 1240-1½<br>521 (600-1½) |  | NA |  |
| CIRCLING  |  | 1280-1  |  | 556 (600-1)   |  | 1280-1½<br>556 (600-1½) |  | NA |  |

KSUE  
DOOR COUNTY CHERRYLAND  
STURGEON BAY, WI  
RNAV (GPS) RWY 28, ORIG-C  
100K Circling Area

