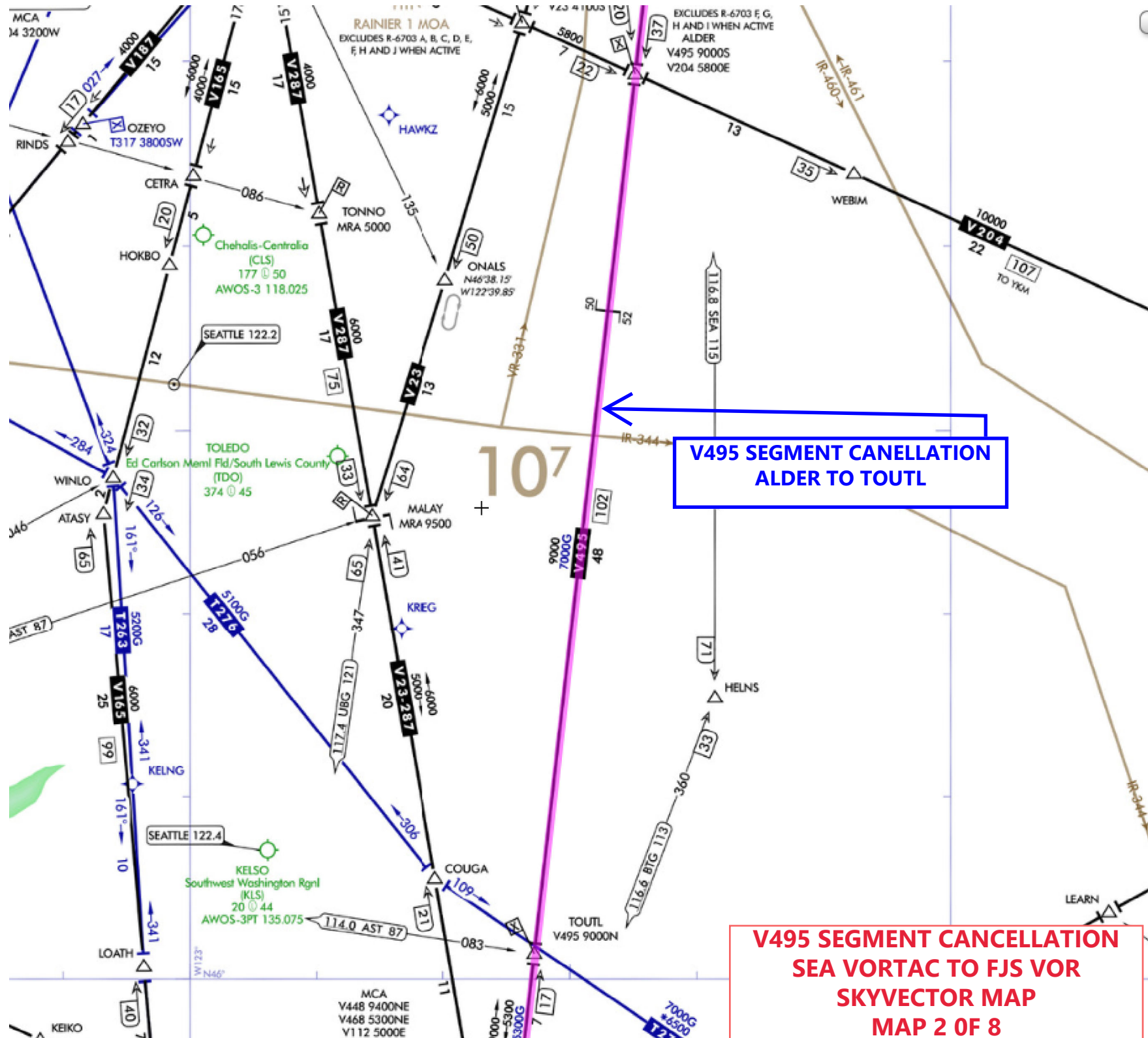


Flight Procedures Cover Page	Task Action: Cancellation	Task Type: Segment	Estimated Chart Date: 04/17/2025	APWS Task ID: 404E9AF348E04070827FF1645AA0AB0F	APWS Project ID: 8A90453201D242E0B7AD0A546798F9E6
Procedure: V495 SEA VORTAC, WA TO FJS VOR_DME, CA		Enroute: YES	Specialist: Shelton, Gale		Agreement Number:
Airport ID:			Airport City:		State:
Facility ID:	Facility Type:	Flight Inspection Remark Type:			
<div>Procedure Comments:</div> <div>AIRWAY STARTING POINT SEATTLE VORTAC, WA 472612N 1221858W</div> <div>AIRSPACE DOCKET 23-AWP-47, REVERSED ORDER OF AIRWAY</div> <div>CONTACT ALLAN WILL, AJV-A423 405-954-1603</div> <div>QUALITY 18 CHECKED</div>					

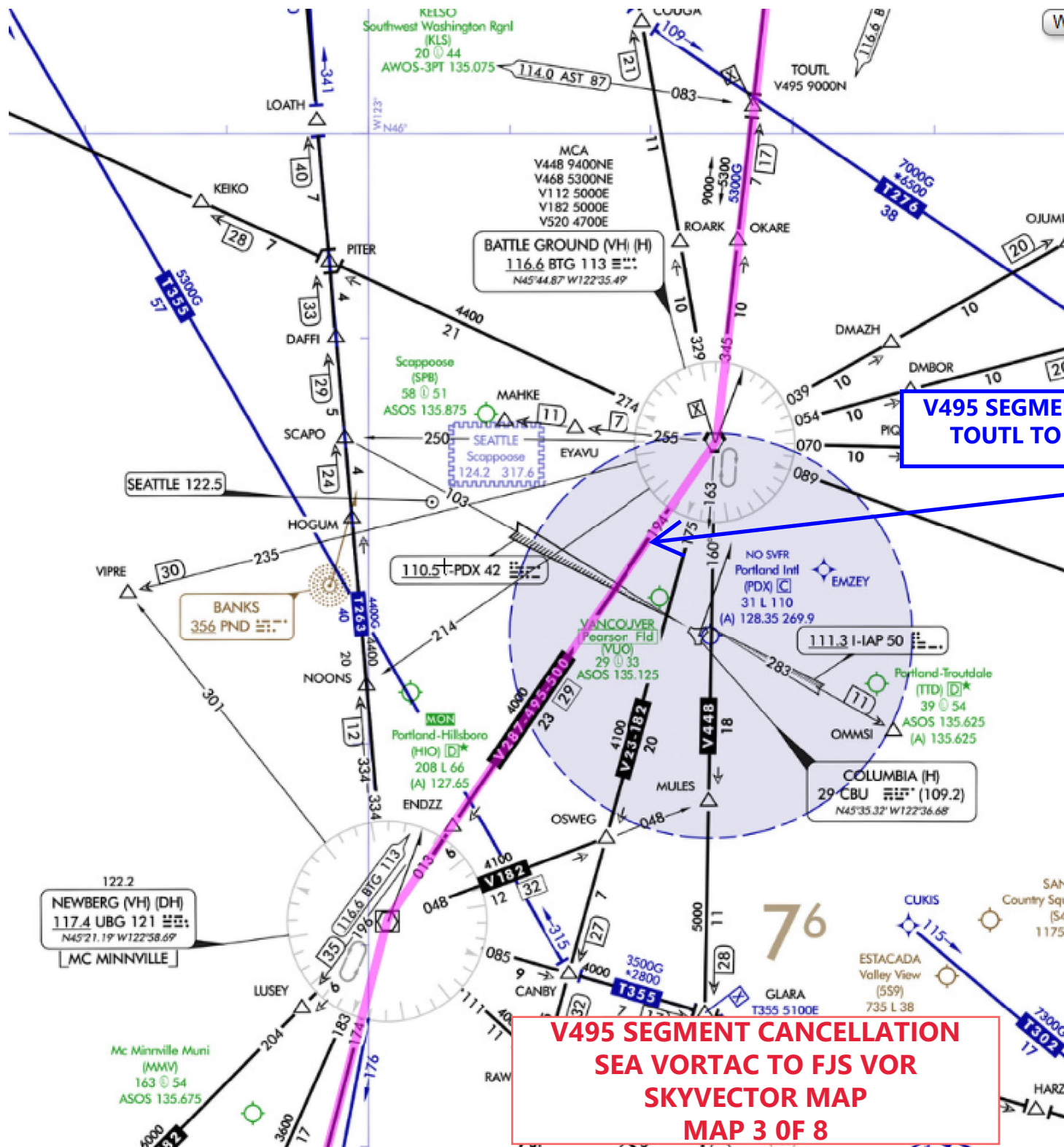




V495 SEGMENT CANCELLATION  
ALDER TO TOUTL

V495 SEGMENT CANCELLATION  
SEA VORTAC TO FJS VOR  
SKYVECTOR MAP  
MAP 2 OF 8





**V495 SEGMENT CANCELLATION  
TOUTL TO UBG VOR/DME**

**V495 SEGMENT CANCELLATION  
SEA VORTAC TO FJS VOR  
SKYVECTOR MAP  
MAP 3 OF 8**

Tillamook  
(TMK)  
39 0 50  
AWOS-3PT 120.0

122.2  
NEWBERG (VH) (DH)  
117.4 UBG 121  $\frac{117.4}{121}$   
N45°21.19' W122°58.69'  
MC MINNVILLE

Mc Minnville Muni  
(MMV)  
163 @ 54  
ASOS 135.675

**V495 SEGMENT CANCELLATION  
UBG VOR/DME TO ADLOW**

110.3 I-SLE 40 

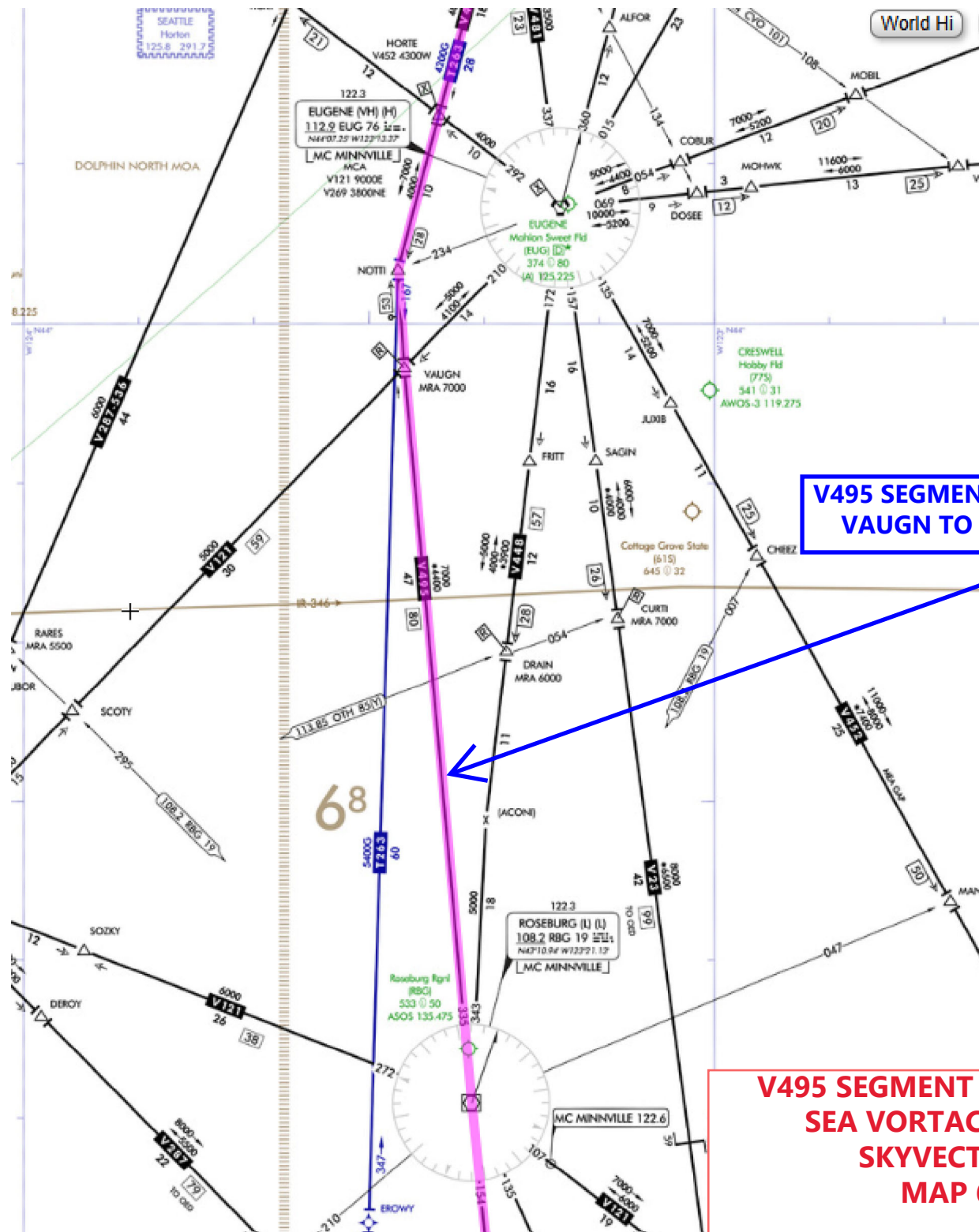
TURN  
266 SL : : : ..

110.3 I-SLE 40 : : : ..

**V495 SEGMENT CANCELLATION**  
**SEA VORTAC TO FJS VOR**  
**SKYVECTOR MAP**  
**MAP 4 OF 8**







**V495 SEGMENT CANCELLATION  
VAUGHN TO RBG VOR/DME**

**V495 SEGMENT CANCELLATION  
SEA VORTAC TO FJS VOR  
SKYVECTOR MAP  
MAP 6 OF 8**

