

## DME DME Assessment Results for COKTL2 path BAUMM\_YAGGR

### Results Summary

Flyability:	Completed
DME/DME:	Completed - No Critical DMEs
Name:	Bob CTR Graham
Project File:	C:\Users\Bob CTR Graham\Desktop\AREA NAV Projects and TARGETS Files\LAS METROPLEX\POST-IMPLEMENTATION WORK\COKTL2 STAR_3-24-22\20210812_KLAS COKTL.tgs
Output File:	C:\Users\Bob CTR Graham\Desktop\AREA NAV Projects and TARGETS Files\LAS METROPLEX\POST-IMPLEMENTATION WORK\COKTL2 STAR_3-24-22\FINAL DOCS\KLAS [IFPA] COKTL2 20210812_1701 PDT\BAUMM_YAGGR\KLAS COKTL2 RNAV STAR BAUMM YAGGR 20210812_1701 PDT.pdf
Procedure Name:	COKTL2
Software: DmeDmePlugin:	6.3.0
Date/Time:	08/12/2021 17:01 PDT
Databases:	DTED MAX

### Failures

No Failures

### Warnings

No Warnings

### Notes For Flight Check

New segment added at beginning of route at TQILA. New segment MEA is FL240. Added crossing restriction at BAUMM of BETWEEN 8600 and 11000, does not affect the minimum altitudes on those segments.

### Flight Plan

Name	Type	Lat/Lon	Altitude (ft)	VNAV Mode	Ground Speed (kts)	Turn Type	Leg Type
BAUMM	WP	N35° 45' 10.45", W115° 24' 26.79"	8600	VNAV	250	FLY_BY	TF
YAGGR	WP	N35° 52' 48.54", W115° 21' 31.70"	8000	VNAV	210	FLY_OVER	TF

### Flyability

Flight Type:	RNAV_STAR
Selected Airport:	KLAS [IFPA]
Climb Gradient:	None assigned
Speeds:	200 Ground Speed to 11000 FT
	240 Ground Speed to 18000 FT
	260 Ground Speed to 24000 FT
	340 Ground Speed above 24000 FT
Descent During a Turn:	Allowed
VNAV Mode:	Flight Plan

## DME DME Assessment Results for COKTL2 path BAUMM\_YAGGR

DME/DME	
RNP:	RNP 2
Flight Mode:	Manual
Line of Sight (DTED Level 0 Max):	Evaluated
Inertial Drift:	Enabled
Initial Drift:	0.558 NM
INS Drift Rate:	8.0 NM/Hour
Range Mode:	OSV
RNP Edges:	Evaluated
Min DME Range:	3.0 NM
DME Types:	DME, VOR-DME, VORTAC
DME Include Angles:	30 to 150
Critical DMEs:	Allowed
DoD Facilities:	Not included
Foreign Facilities:	Not included
High DMEs:	Included
Low DMEs:	Included
Terminal DMEs:	Included
Flight Check DMEs:	Not selected
Higher Altitudes:	Not Evaluated
Near Maximum Altitude:	Not Evaluated
Automatic ESVs:	Enabled
Disabled DMEs:	None

DME/DME (Continued)										
DMEs Used										
#	Name	Lat/Lon	MAGVAR	Range	Type	Source	Critical	Status	Time	Distance
1	GOG	N35° 53' 39.30", W115° 29' 45.90"	0.0 E	130	H	IFPA	NO	Enabled	64.3 %	64.3 %
2	BLD	N35° 59' 44.84", W114° 51' 48.88"	15.0 E	130	H	IFPA	NO	Enabled	64.3 %	64.3 %

Flight Check DME Selection						
Distance [NM]	Selected DMEs					Alternate
0.0	GOG	BLD				
1.2						
1.3	GOG	BLD				
5.4						

Inertial Drift Segments			
#	Start Location	End Location	Length [NM]
1	N35° 46' 18.17", W115° 24' 00.94"	N35° 46' 26.14", W115° 23' 57.90"	0.1389
2	N35° 50' 21.16", W115° 22' 28.09"	N35° 52' 48.54", W115° 21' 31.70"	2.5689

Available DMEs by Waypoints		
Waypoint Before	Waypoint After	DME List
BAUMM	YAGGR	BLD, GOG

# DME DME Assessment Results for COKTL2 path BAUMM\_YAGGR

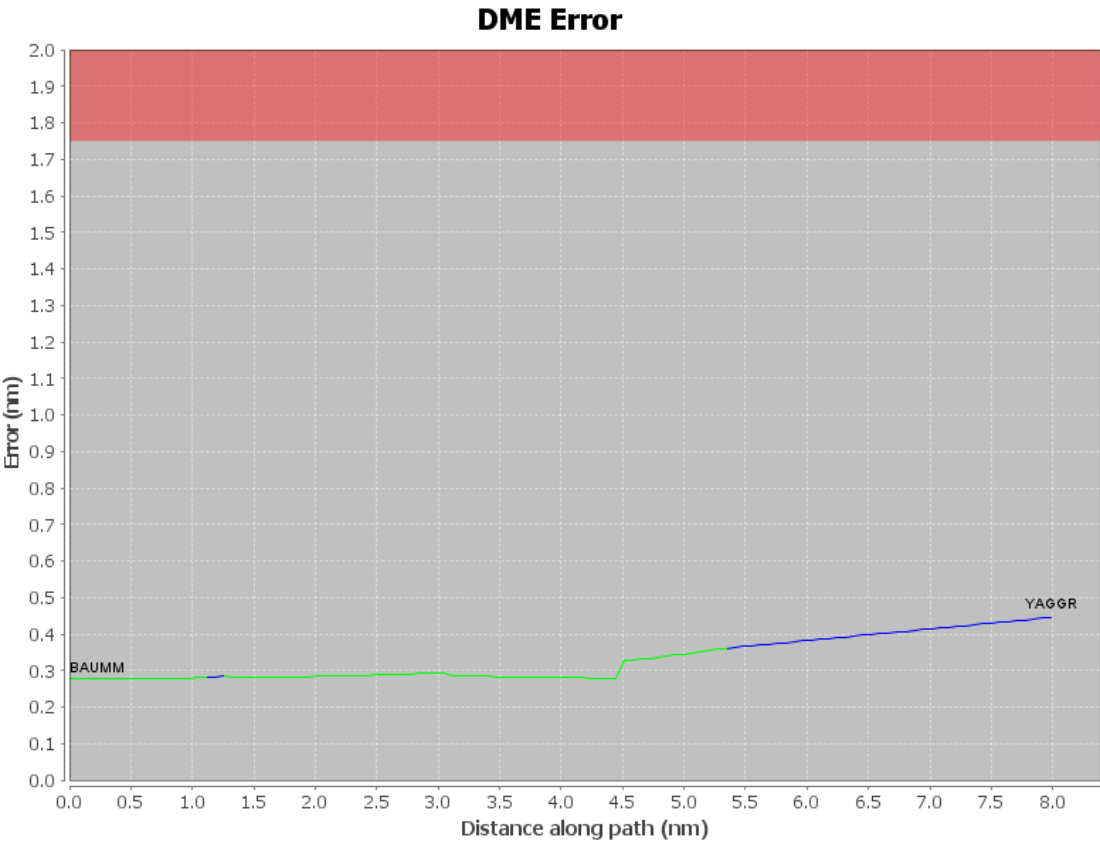
## User Data Files

#	File Name
1	New Analysis.udt
2	UserDMEsKLAS [IFPA] COKTL1 RNAV STAR_20190828_1732 MST.udt

## User DMEs

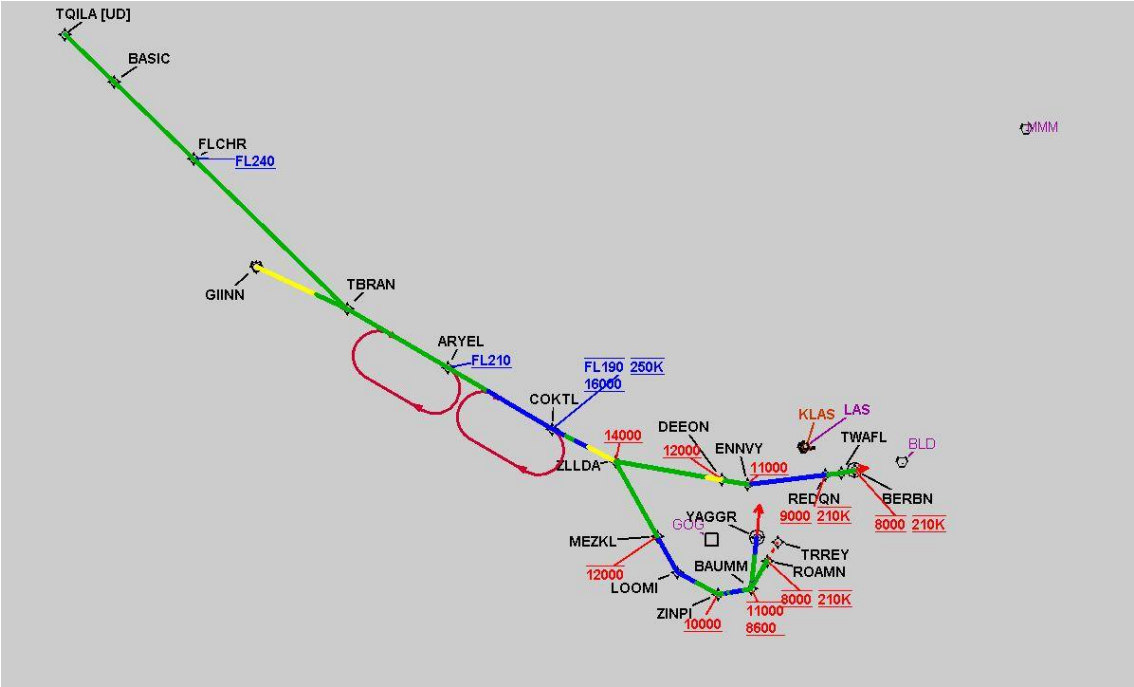
#	Name	Lat/Lon	MAGVAR	Range	Elevation [ft]	Frequency	Replaces	Status
1	PMD FAA 698165-45 PMD [IFPA]	N34° 37' 53.03", W118° 03' 49.76"	15.0 E	130	2509.8	114.5	PMD FAA 698165-45	
ESV:		Bearing [True]: 21.0° to 32.0° Bearing [Mag]: 6.0° to 17.0°				Arc Distance: Out to 160.0 NM Altitude: 20900.0 to 21900.0 ft		
2	DAG FAA 704130-35 DAG [IFPA]	N34° 57' 44.84", W116° 34' 41.40"	15.0 E	40	1760	113.2	DAG FAA 704130-35	
ESV:		Bearing [True]: 4.0° to 40.0° Bearing [Mag]: 349.0° to 25.0°				Arc Distance: Out to 109.0 NM Altitude: 10900.0 to 23700.0 ft		
3	MMM FAA 698159-45 MMM [IFPA]	N36° 46' 09.31", W114° 16' 38.83"	16.0 E	40	2106.3	114.3	MMM FAA 698159-45	
ESV:		Bearing [True]: 222.0° to 255.0° Bearing [Mag]: 206.0° to 239.0°				Arc Distance: Out to 79.0 NM Altitude: 10800.0 to 16000.0 ft		

DME DME Assessment Results for COKTL2 path BAUMM\_YAGGR



DME DME Assessment Results for COKTL2 path BAUMM\_YAGGR

Graphic Depiction 1



## DME DME Assessment Results for COKTL2 path GIINN\_TBRAN

### Results Summary

Flyability:	Completed
DME/DME:	Completed - No Critical DMEs
Name:	Bob CTR Graham
Project File:	C:\Users\Bob CTR Graham\Desktop\AREA NAV Projects and TARGETS Files\LAS METROPLEX\POST-IMPLEMENTATION WORK\COKTL2 STAR_3-24-22\20210812_KLAS COKTL.tgs
Output File:	C:\Users\Bob CTR Graham\Desktop\AREA NAV Projects and TARGETS Files\LAS METROPLEX\POST-IMPLEMENTATION WORK\COKTL2 STAR_3-24-22\FINAL DOCS\KLAS [IFPA] COKTL2 20210812_1701 PDT\GIINN_TBRAN\KLAS COKTL2 RNAV STAR GIINN TBRAN 20210812_1701 PDT.pdf
Procedure Name:	COKTL2
Software: DmeDmePlugin:	6.3.0
Date/Time:	08/12/2021 17:01 PDT
Databases:	DTED MAX

### Failures

No Failures

### Warnings

No Warnings

### Notes For Flight Check

New segment added at beginning of route at TQILA. New segment MEA is FL240. Added crossing restriction at BAUMM of BETWEEN 8600 and 11000, does not affect the minimum altitudes on those segments.

### Flight Plan

Name	Type	Lat/Lon	Altitude (ft)	VNAV Mode	Ground Speed (kts)	Turn Type	Leg Type
GIINN	WP	N36° 48' 01.66", W116° 44' 50.66"	21000	VNAV	250	FLY_BY	TF
TBRAN	WP	N36° 39' 02.48", W116° 29' 25.81"	21000	VNAV	250	FLY_BY	TF

### Flyability

Flight Type:	RNAV_STAR
Selected Airport:	KLAS [IFPA]
Climb Gradient:	None assigned
Speeds:	200 Ground Speed to 11000 FT
	240 Ground Speed to 18000 FT
	260 Ground Speed to 24000 FT
	340 Ground Speed above 24000 FT
Descent During a Turn:	Allowed
VNAV Mode:	Flight Plan

## DME DME Assessment Results for COKTL2 path GIINN\_TBRAN

DME/DME	
RNP:	RNP 2
Flight Mode:	Manual
Line of Sight (DTED Level 0 Max):	Evaluated
Inertial Drift:	Enabled
Initial Drift:	0.558 NM
INS Drift Rate:	8.0 NM/Hour
Range Mode:	OSV
RNP Edges:	Evaluated
Min DME Range:	3.0 NM
DME Types:	DME, VOR-DME, VORTAC
DME Include Angles:	30 to 150
Critical DMEs:	Allowed
DoD Facilities:	Not included
Foreign Facilities:	Not included
High DMEs:	Included
Low DMEs:	Included
Terminal DMEs:	Included
Flight Check DMEs:	Not selected
Higher Altitudes:	Not Evaluated
Near Maximum Altitude:	Not Evaluated
Automatic ESVs:	Enabled
Disabled DMEs:	None

DME/DME (Continued)										
DMEs Used										
#	Name	Lat/Lon	MAGVAR	Range	Type	Source	Critical	Status	Time	Distance
1	HEC	N34° 47' 49.26", W116° 27' 46.52"	15.0 E	130	H	IFPA	NO	Enabled	100 %	100 %
2	GOG	N35° 53' 39.30", W115° 29' 45.90"	0.0 E	130	H	IFPA	NO	Enabled	65.6 %	65.6 %
3	PMD	N34° 37' 53.03", W118° 03' 49.76"	15.0 E	130	H	IFPA	NO	Enabled	21.7 %	21.7 %
4	OAL	N38° 00' 11.74", W117° 46' 13.61"	17.0 E	130	H	IFPA	NO	Enabled	70.6 %	70.6 %
5	BLD	N35° 59' 44.84", W114° 51' 48.88"	15.0 E	130	H	IFPA	NO	Enabled	80.1 %	80.1 %
6	TPH	N38° 01' 50.32", W117° 02' 00.61"	17.0 E	130	H	IFPA	NO	Enabled	100 %	100 %
7	BTY	N36° 48' 02.15", W116° 44' 51.51"	16.0 E	130	H	IFPA	NO	Enabled	74.7 %	74.7 %

Flight Check DME Selection						
Distance [NM]	Selected DMEs					Alternate
0.0	PMD	GOG	TPH	OAL	HEC	
3.0	TPH	BTY	BLD	HEC	GOG	
10.1	PMD	BLD	HEC	TPH	OAL	
10.5	BLD	HEC	TPH	OAL		
10.9	BLD	HEC	BTY	TPH	OAL	
12.3	BLD	HEC	BTY	TPH		

Inertial Drift Segments			
#	Start Location	End Location	Length [NM]

Available DMEs by Waypoints		
Waypoint Before	Waypoint After	DME List
GIINN	TBRAN	PMD, BTY, HEC, OAL, BLD, TPH, GOG

# DME DME Assessment Results for COKTL2 path GIINN\_TBRAN

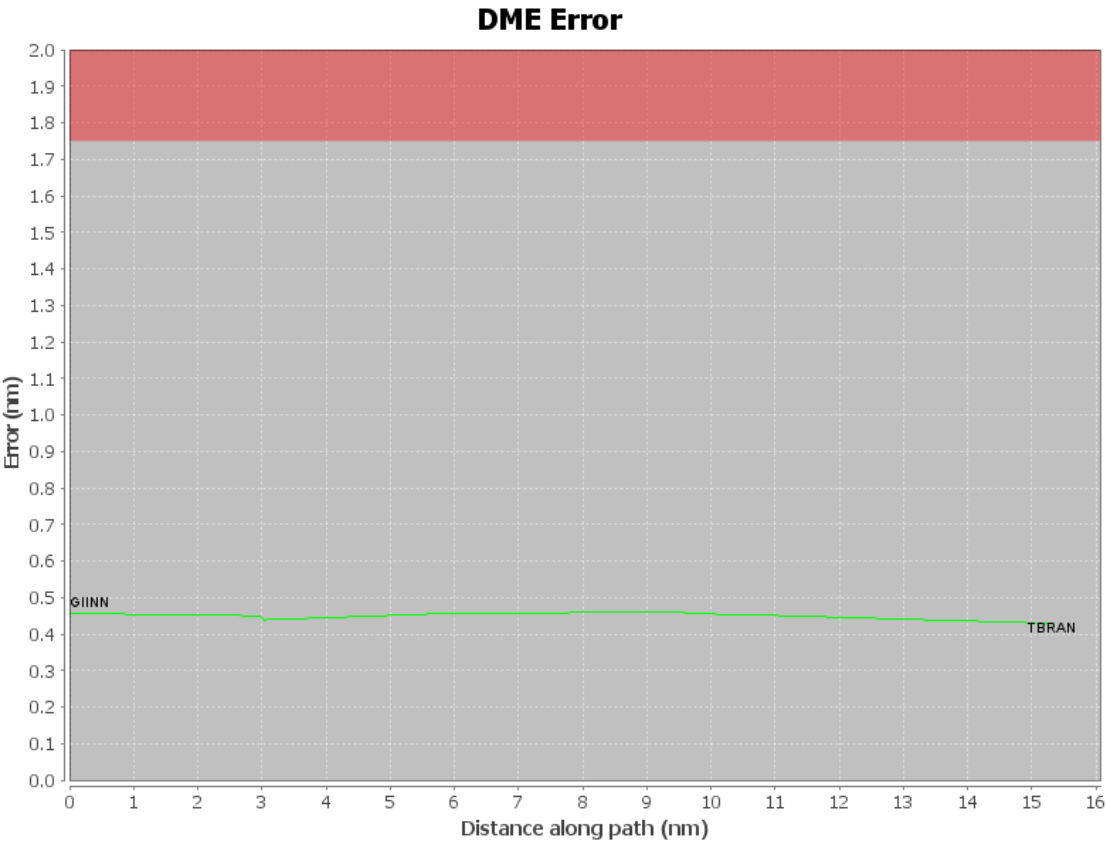
## User Data Files

#	File Name
1	New Analysis.udt
2	UserDMEsKLAS [IFPA] COKTL1 RNAV STAR_20190828_1732 MST.udt

## User DMEs

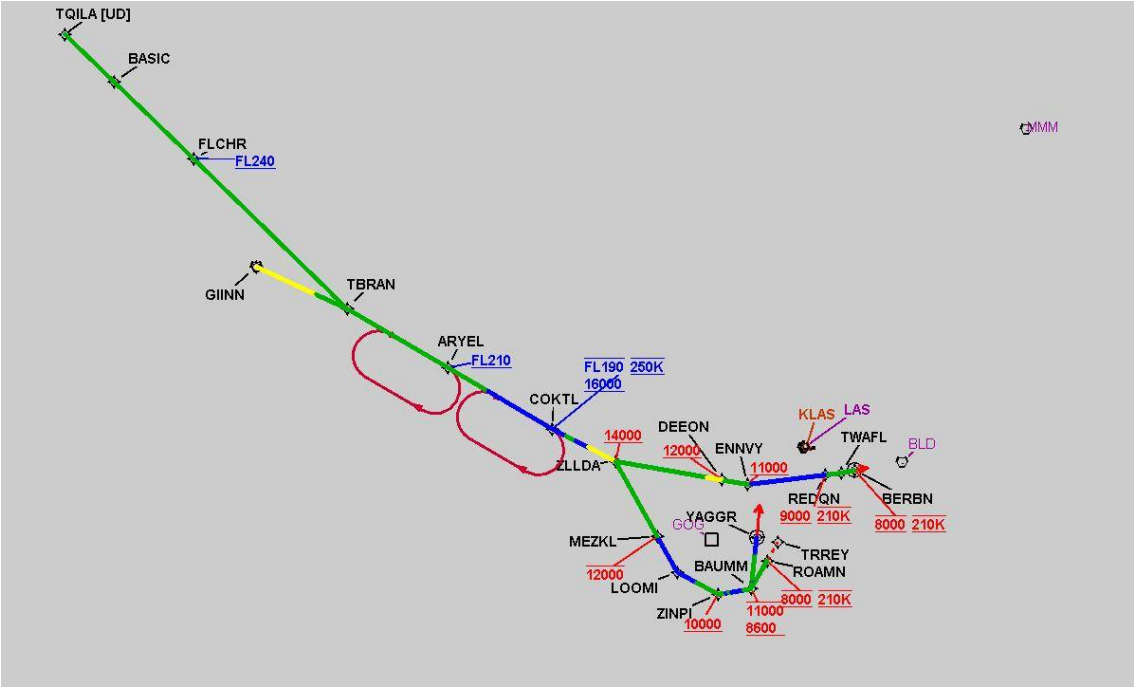
#	Name	Lat/Lon	MAGVAR	Range	Elevation [ft]	Frequency	Replaces	Status
1	PMD FAA 698165-45 PMD [IFPA]	N34° 37' 53.03", W118° 03' 49.76"	15.0 E	130	2509.8	114.5	PMD FAA 698165-45	
ESV:		Bearing [True]: 21.0° to 32.0° Bearing [Mag]: 6.0° to 17.0°				Arc Distance: Out to 160.0 NM Altitude: 20900.0 to 21900.0 ft		
2	DAG FAA 704130-35 DAG [IFPA]	N34° 57' 44.84", W116° 34' 41.40"	15.0 E	40	1760	113.2	DAG FAA 704130-35	
ESV:		Bearing [True]: 4.0° to 40.0° Bearing [Mag]: 349.0° to 25.0°				Arc Distance: Out to 109.0 NM Altitude: 10900.0 to 23700.0 ft		
3	MMM FAA 698159-45 MMM [IFPA]	N36° 46' 09.31", W114° 16' 38.83"	16.0 E	40	2106.3	114.3	MMM FAA 698159-45	
ESV:		Bearing [True]: 222.0° to 255.0° Bearing [Mag]: 206.0° to 239.0°				Arc Distance: Out to 79.0 NM Altitude: 10800.0 to 16000.0 ft		





DME DME Assessment Results for COKTL2 path GIINN\_TBRAN

Graphic Depiction 1



## DME DME Assessment Results for COKTL2 path TQILA\_BERBN

### Results Summary

Flyability:	Completed
DME/DME:	Completed - No Critical DMEs
Name:	Bob CTR Graham
Project File:	C:\Users\Bob CTR Graham\Desktop\AREA NAV Projects and TARGETS Files\LAS METROPLEX\POST-IMPLEMENTATION WORK\COKTL2 STAR_3-24-22\20210812_KLAS COKTL.tgs
Output File:	C:\Users\Bob CTR Graham\Desktop\AREA NAV Projects and TARGETS Files\LAS METROPLEX\POST-IMPLEMENTATION WORK\COKTL2 STAR_3-24-22\FINAL DOCS\KLAS [IFPA] COKTL2 20210812_1701 PDT\TQILA_BERBN\KLAS COKTL2 RNAV STAR TQILA BERBN 20210812_1701 PDT.pdf
Procedure Name:	COKTL2
Software: DmeDmePlugin:	6.3.0
Date/Time:	08/12/2021 17:01 PDT
Databases:	DTED MAX

### Failures

No Failures

### Warnings

No Warnings

### Notes For Flight Check

New segment added at beginning of route at TQILA. New segment MEA is FL240. Added crossing restriction at BAUMM of BETWEEN 8600 and 11000, does not affect the minimum altitudes on those segments.

### Flight Plan

Name	Type	Lat/Lon	Altitude (ft)	VNAV Mode	Ground Speed (kts)	Turn Type	Leg Type
TQILA	WP	N37° 28' 33.00", W117° 12' 02.00"	24000	VNAV	250	FLY_BY	TF
BASIC	WP	N37° 19' 54.27", W117° 04' 30.98"	24000	VNAV	250	FLY_BY	TF
FLCHR	WP	N37° 06' 02.27", W116° 52' 31.36"	24000	VNAV	250	FLY_BY	TF
TBRAN	WP	N36° 39' 02.48", W116° 29' 25.81"	21000	VNAV	250	FLY_BY	TF
ARYEL	WP	N36° 27' 18.20", W116° 12' 51.25"	21000	VNAV	250	FLY_BY	TF
COKTL	WP	N36° 15' 03.98", W115° 55' 43.16"	16000	VNAV	250	FLY_BY	TF
ZLLDA	WP	N36° 08' 19.66", W115° 45' 03.06"	14000	VNAV	250	FLY_BY	TF
DEEON	WP	N36° 02' 24.36", W115° 25' 51.32"	12000	VNAV	250	FLY_BY	TF
ENNVY	WP	N36° 00' 58.51", W115° 21' 14.95"	11000	VNAV	250	FLY_BY	TF
REDQN	WP	N36° 00' 08.26", W115° 06' 28.33"	9000	VNAV	210	FLY_BY	TF
TWAFI	WP	N35° 59' 58.01", W115° 03' 31.31"	8000	VNAV	210	FLY_BY	TF
BERBN	WP	N35° 59' 57.25", W115° 00' 50.72"	8000	VNAV	210	FLY_OVER	TF

## DME DME Assessment Results for COKTL2 path TQILA\_BERBN

Flyability	
Flight Type:	RNAV_STAR
Selected Airport:	KLAS [IFPA]
Climb Gradient:	None assigned
Speeds:	200 Ground Speed to 11000 FT
	240 Ground Speed to 18000 FT
	260 Ground Speed to 24000 FT
	340 Ground Speed above 24000 FT
Descent During a Turn:	Allowed
VNAV Mode:	Flight Plan

DME/DME	
RNP:	RNP 2
Flight Mode:	Manual
Line of Sight (DTED Level 0 Max):	Evaluated
Inertial Drift:	Enabled
Initial Drift:	0.558 NM
INS Drift Rate:	8.0 NM/Hour
Range Mode:	OSV
RNP Edges:	Evaluated
Min DME Range:	3.0 NM
DME Types:	DME, VOR-DME, VORTAC
DME Include Angles:	30 to 150
Critical DMEs:	Allowed
DoD Facilities:	Not included
Foreign Facilities:	Not included
High DMEs:	Included
Low DMEs:	Included
Terminal DMEs:	Included
Flight Check DMEs:	Not selected
Higher Altitudes:	Not Evaluated
Near Maximum Altitude:	Not Evaluated
Automatic ESVs:	Enabled
Disabled DMEs:	None

**DME DME Assessment Results for COKTL2 path TQILA\_BERBN**

<b>DME/DME (Continued)</b>										
<b>DMEs Used</b>										
<b>#</b>	<b>Name</b>	<b>Lat/Lon</b>	<b>MAGVAR</b>	<b>Range</b>	<b>Type</b>	<b>Source</b>	<b>Critical</b>	<b>Status</b>	<b>Time</b>	<b>Distance</b>
1	CNT	N38° 40' 06.00", W115° 35' 56.00"	0.0 E	130	H	IFPA	NO	Enabled	20.4 %	20.6 %
2	DAG	N34° 57' 44.84", W116° 34' 41.40"	15.0 E	40	L	IFPA	NO	Enabled	23 %	23.1 %
3	OAL	N38° 00' 11.74", W117° 46' 13.61"	17.0 E	130	H	IFPA	NO	Enabled	38.6 %	38.8 %
4	PMD	N34° 37' 53.03", W118° 03' 49.76"	15.0 E	130	H	IFPA	NO	Enabled	14.3 %	14.4 %
5	MVA	N38° 33' 55.08", W118° 01' 58.27"	17.0 E	130	H	IFPA	NO	Enabled	16.1 %	16.2 %
6	TPH	N38° 01' 50.32", W117° 02' 00.61"	17.0 E	130	H	IFPA	NO	Enabled	48.2 %	48.5 %
7	BTY	N36° 48' 02.15", W116° 44' 51.51"	16.0 E	130	H	IFPA	NO	Enabled	28.2 %	28.4 %
8	HEC	N34° 47' 49.26", W116° 27' 46.52"	15.0 E	130	H	IFPA	NO	Enabled	20.4 %	20.5 %
9	GOG	N35° 53' 39.30", W115° 29' 45.90"	0.0 E	130	H	IFPA	NO	Enabled	20.1 %	19.6 %
10	EED	N34° 45' 57.62", W114° 28' 26.77"	15.0 E	130	H	IFPA	NO	Enabled	1.2 %	1.2 %
11	LAS	N36° 04' 46.93", W115° 09' 35.27"	15.0 E	130	H	IFPA	NO	Enabled	20.2 %	19.7 %
12	MMM	N36° 46' 09.31", W114° 16' 38.83"	16.0 E	40	L	IFPA	NO	Enabled	9.1 %	9.1 %
13	BLD	N35° 59' 44.84", W114° 51' 48.88"	15.0 E	130	H	IFPA	NO	Enabled	45.4 %	45.6 %

## DME DME Assessment Results for COKTL2 path TQILA\_BERBN

Flight Check DME Selection						
Distance [NM]	Selected DMEs					Alternate
0.0	CNT	OAL	TPH	BTY	MVA	
12.6	CNT	OAL	MVA	TPH		
15.5	CNT	OAL	MVA	BLD	TPH	
23.5	CNT	OAL	BLD	TPH		
29.8	TPH	BLD				
31.9	TPH	BLD	PMD	OAL		
32.1	PMD	OAL				
35.0	PMD	OAL	TPH			
48.5	PMD	BLD	TPH	HEC	OAL	
51.3	TPH	BLD	HEC	OAL		
54.1	PMD	OAL	TPH	HEC		
55.6	BLD	HEC	TPH	OAL		
56.4	BTY	HEC	BLD	TPH	OAL	
58.3	BTY	HEC	BLD	TPH		
65.2	BLD	HEC	BTY	GOG	TPH	
73.1	DAG	BLD	HEC	BTY	GOG	
78.2	DAG	BLD	BTY	GOG		
78.5	DAG	BLD	BTY			
80.7	DAG	BLD	BTY	EED		
82.6	DAG	BLD	BTY			
83.5	DAG	BTY				
85.0						
98.7	DAG	LAS				
100.3						
102.5	DAG	LAS	GOG			
107.3	DAG	LAS				
112.2	DAG	BLD	LAS			
115.0	DAG	BLD	LAS	MMM		
121.4	MMM	BLD				
121.5	GOG	BLD	LAS	DAG	MMM	
122.8	GOG	BLD	LAS	MMM		
125.3	GOG	BLD	MMM			
127.6	MMM	BLD				
128.3						
140.1	GOG	LAS				

Inertial Drift Segments			
#	Start Location	End Location	Length [NM]
1	N36° 22' 34.19", W116° 06' 12.52"	N36° 13' 34.50", W115° 53' 21.21"	13.7286
2	N36° 12' 35.67", W115° 51' 47.97"	N36° 11' 13.79", W115° 49' 38.32"	2.2172
3	N36° 00' 56.81", W115° 20' 44.37"	N36° 00' 07.53", W115° 06' 15.69"	11.7423

Available DMEs by Waypoints		
Waypoint Before	Waypoint After	DME List
TQILA	BASIC	BTY, CNT, MVA, OAL, TPH
BASIC	FLCHR	BTY, CNT, MVA, OAL, BLD, TPH
FLCHR	TBRAN	PMD, BTY, HEC, CNT, BLD, OAL, TPH
TBRAN	ARYEL	BTY, HEC, BLD, DAG, TPH, GOG
ARYEL	COKTL	EED, BTY, HEC, BLD, DAG, GOG
COKTL	ZLLDA	DAG, GOG, LAS
ZLLDA	DEEON	DAG, BLD, MMM, GOG, LAS
DEEON	ENNVY	BLD, MMM, GOG, LAS
ENNVY	REDQN	BLD, MMM
REDQN	TWAFL	GOG, LAS
TWAFL	BERBN	GOG, LAS

# DME DME Assessment Results for COKTL2 path TQILA\_BERBN

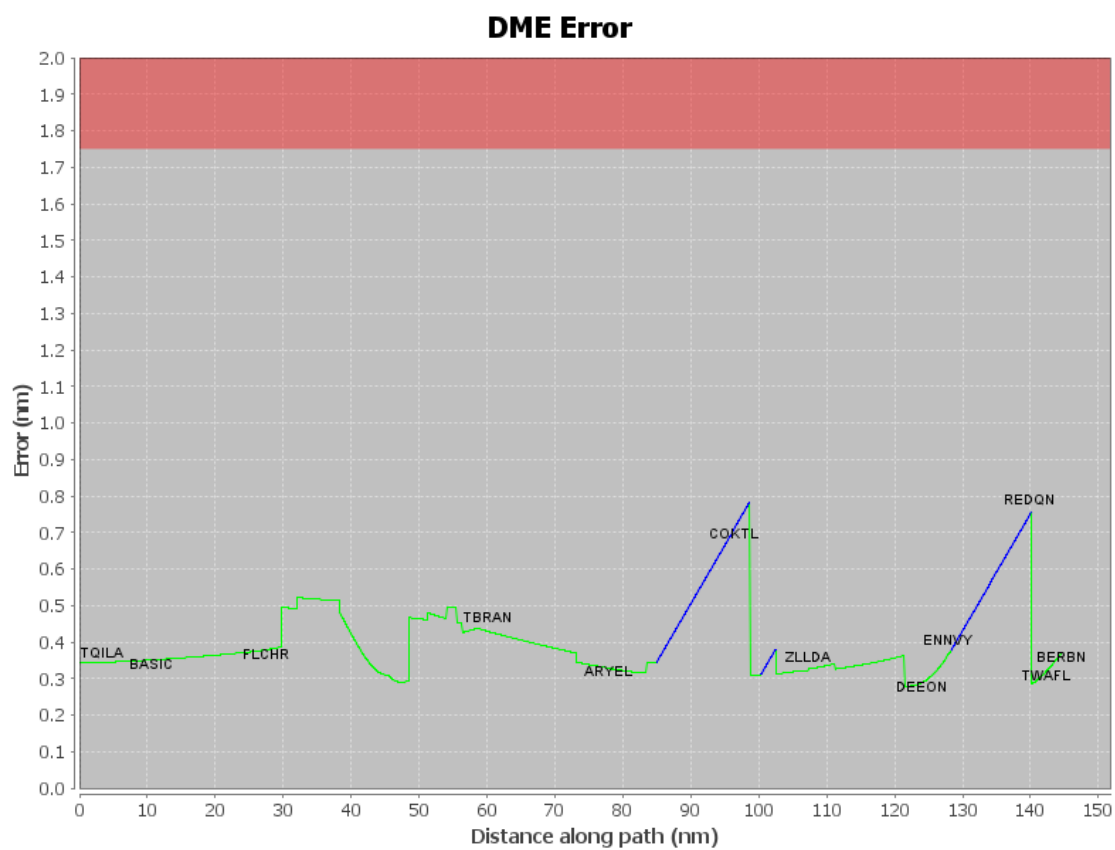
## User Data Files

#	File Name
1	New Analysis.udt
2	UserDMEsKLAS [IFPA] COKTL1 RNAV STAR_20190828_1732 MST.udt

## User DMEs

#	Name	Lat/Lon	MAGVAR	Range	Elevation [ft]	Frequency	Replaces	Status
1	PMD FAA 698165-45 PMD [IFPA]	N34° 37' 53.03", W118° 03' 49.76"	15.0 E	130	2509.8	114.5	PMD FAA 698165-45	
ESV:		Bearing [True]: 21.0° to 32.0° Bearing [Mag]: 6.0° to 17.0°				Arc Distance: Out to 160.0 NM Altitude: 20900.0 to 21900.0 ft		
2	DAG FAA 704130-35 DAG [IFPA]	N34° 57' 44.84", W116° 34' 41.40"	15.0 E	40	1760	113.2	DAG FAA 704130-35	
ESV:		Bearing [True]: 4.0° to 40.0° Bearing [Mag]: 349.0° to 25.0°				Arc Distance: Out to 109.0 NM Altitude: 10900.0 to 23700.0 ft		
3	MMM FAA 698159-45 MMM [IFPA]	N36° 46' 09.31", W114° 16' 38.83"	16.0 E	40	2106.3	114.3	MMM FAA 698159-45	
ESV:		Bearing [True]: 222.0° to 255.0° Bearing [Mag]: 206.0° to 239.0°				Arc Distance: Out to 79.0 NM Altitude: 10800.0 to 16000.0 ft		

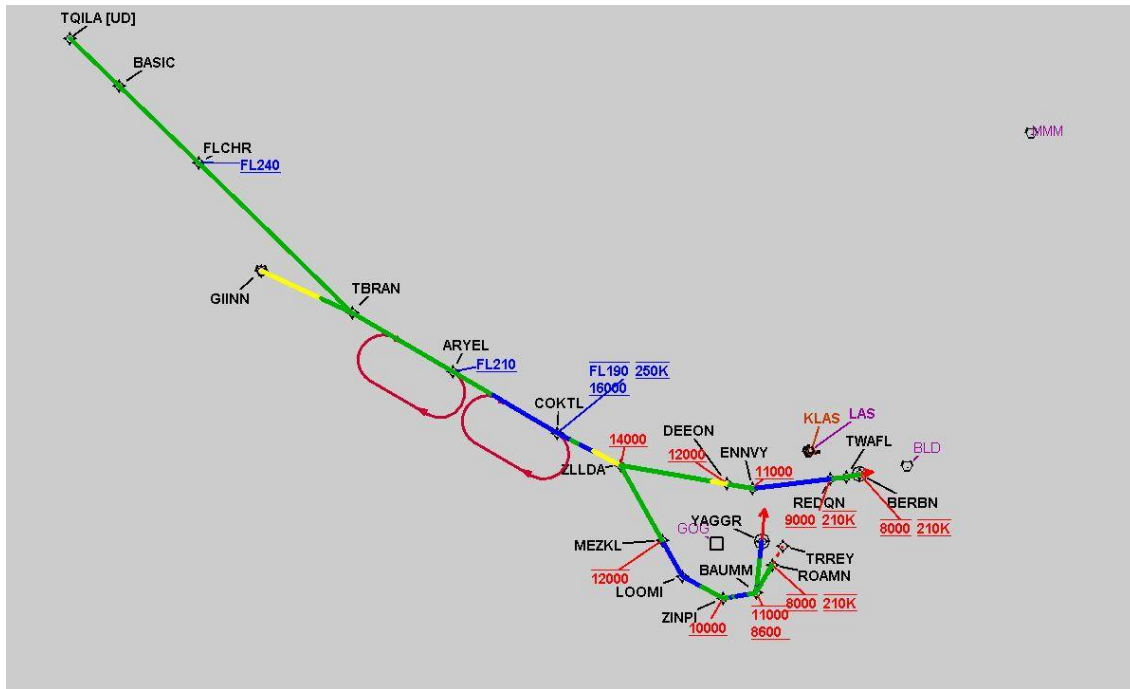
## DME DME Assessment Results for COKTL2 path TQILA\_BERBN





# DME DME Assessment Results for COKTL2 path TQILA\_BERBN

Graphic Depiction 1



## DME DME Assessment Results for COKTL2 path ZLLDA\_ROAMN

### Results Summary

Flyability:	Completed
DME/DME:	Completed - No Critical DMEs
Name:	Bob CTR Graham
Project File:	C:\Users\Bob CTR Graham\Desktop\AREA NAV Projects and TARGETS Files\LAS METROPLEX\POST-IMPLEMENTATION WORK\COKTL2 STAR_3-24-22\20210812_KLAS COKTL.tgs
Output File:	C:\Users\Bob CTR Graham\Desktop\AREA NAV Projects and TARGETS Files\LAS METROPLEX\POST-IMPLEMENTATION WORK\COKTL2 STAR_3-24-22\FINAL DOCS\KLAS [IFPA] COKTL2 20210812_1701 PDT\ZLLDA_ROAMN\KLAS COKTL2 RNAV STAR ZLLDA ROAMN 20210812_1701 PDT.pdf
Procedure Name:	COKTL2
Software: DmeDmePlugin:	6.3.0
Date/Time:	08/12/2021 17:01 PDT
Databases:	DTED MAX

### Failures

No Failures

### Warnings

No Warnings

### Notes For Flight Check

New segment added at beginning of route at TQILA. New segment MEA is FL240. Added crossing restriction at BAUMM of BETWEEN 8600 and 11000, does not affect the minimum altitudes on those segments.

### Flight Plan

Name	Type	Lat/Lon	Altitude (ft)	VNAV Mode	Ground Speed (kts)	Turn Type	Leg Type
ZLLDA	WP	N36° 08' 19.66", W115° 45' 03.06"	14000	VNAV	250	FLY_BY	TF
MEZKL	WP	N35° 55' 51.36", W115° 39' 59.70"	12000	VNAV	250	FLY_BY	TF
LOOMI	WP	N35° 49' 49.76", W115° 37' 32.46"	10000	VNAV	250	FLY_BY	TF
ZINPI	WP	N35° 45' 20.49", W115° 30' 43.57"	10000	VNAV	250	FLY_BY	TF
BAUMM	WP	N35° 45' 10.45", W115° 24' 26.79"	8600	VNAV	250	FLY_BY	TF
ROAMN	WP	N35° 48' 57.47", W115° 20' 21.90"	8000	VNAV	210	FLY_BY	TF

### Flyability

Flight Type:	RNAV_STAR
Selected Airport:	KLAS [IFPA]
Climb Gradient:	None assigned
Speeds:	200 Ground Speed to 11000 FT
	240 Ground Speed to 18000 FT
	260 Ground Speed to 24000 FT
	340 Ground Speed above 24000 FT
Descent During a Turn:	Allowed
VNAV Mode:	Flight Plan

## DME DME Assessment Results for COKTL2 path ZLLDA\_ROAMN

DME/DME	
RNP:	RNP 2
Flight Mode:	Manual
Line of Sight (DTED Level 0 Max):	Evaluated
Inertial Drift:	Enabled
Initial Drift:	0.558 NM
INS Drift Rate:	8.0 NM/Hour
Range Mode:	OSV
RNP Edges:	Evaluated
Min DME Range:	3.0 NM
DME Types:	DME, VOR-DME, VORTAC
DME Include Angles:	30 to 150
Critical DMEs:	Allowed
DoD Facilities:	Not included
Foreign Facilities:	Not included
High DMEs:	Included
Low DMEs:	Included
Terminal DMEs:	Included
Flight Check DMEs:	Not selected
Higher Altitudes:	Not Evaluated
Near Maximum Altitude:	Not Evaluated
Automatic ESVs:	Enabled
Disabled DMEs:	None

DME/DME (Continued)										
DMEs Used										
#	Name	Lat/Lon	MAGVAR	Range	Type	Source	Critical	Status	Time	Distance
1	DAG	N34° 57' 44.84", W116° 34' 41.40"	15.0 E	40	L	IFPA	NO	Enabled	36.1 %	36.1 %
2	LAS	N36° 04' 46.93", W115° 09' 35.27"	15.0 E	130	H	IFPA	NO	Enabled	37.2 %	37.2 %
3	GOG	N35° 53' 39.30", W115° 29' 45.90"	0.0 E	130	H	IFPA	NO	Enabled	31.2 %	31.2 %
4	BLD	N35° 59' 44.84", W114° 51' 48.88"	15.0 E	130	H	IFPA	NO	Enabled	30.1 %	30.1 %

Flight Check DME Selection						
Distance [NM]	Selected DMEs					Alternate
0.0	DAG	LAS				
13.3						
22.7	GOG	BLD				
27.6						
28.1	GOG	LAS				
28.6						
30.5	GOG	BLD				

Inertial Drift Segments			
#	Start Location	End Location	Length [NM]
1	N35° 55' 39.57", W115° 39' 54.89"	N35° 47' 46.94", W115° 34' 25.78"	9.3928
2	N35° 45' 18.48", W115° 29' 27.19"	N35° 45' 17.54", W115° 28' 51.55"	0.4837
3	N35° 45' 16.59", W115° 28' 15.91"	N35° 45' 12.79", W115° 25' 53.35"	1.935

## DME DME Assessment Results for COKTL2 path ZLLDA\_ROAMN

### Available DMEs by Waypoints

Waypoint Before	Waypoint After	DME List
ZLLDA	MEZKL	DAG, LAS
MEZKL	LOOMI	DAG, LAS
LOOMI	ZINPI	BLD, GOG
ZINPI	BAUMM	BLD, GOG, LAS
BAUMM	ROAMN	BLD, GOG

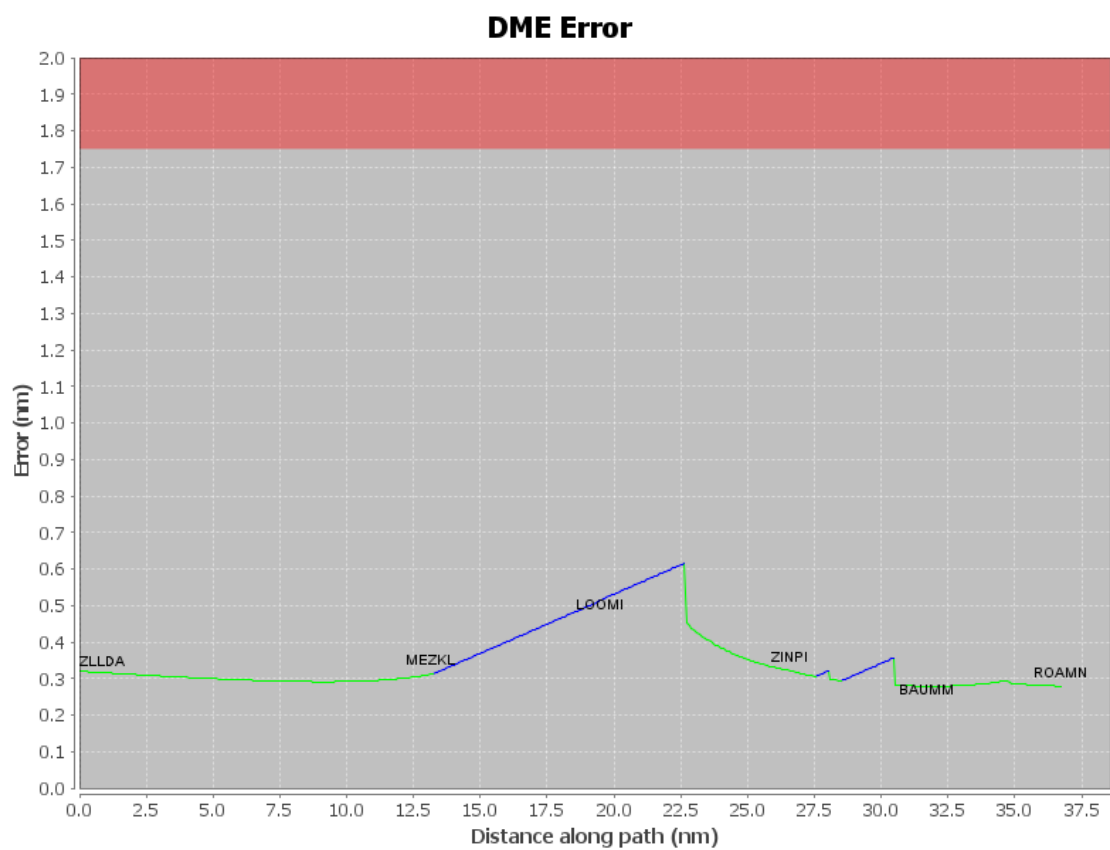
### User Data Files

#	File Name
1	New Analysis.udt
2	UserDMEsKLAS [IFPA] COKTL1 RNAV STAR_20190828_1732 MST.udt

### User DMEs

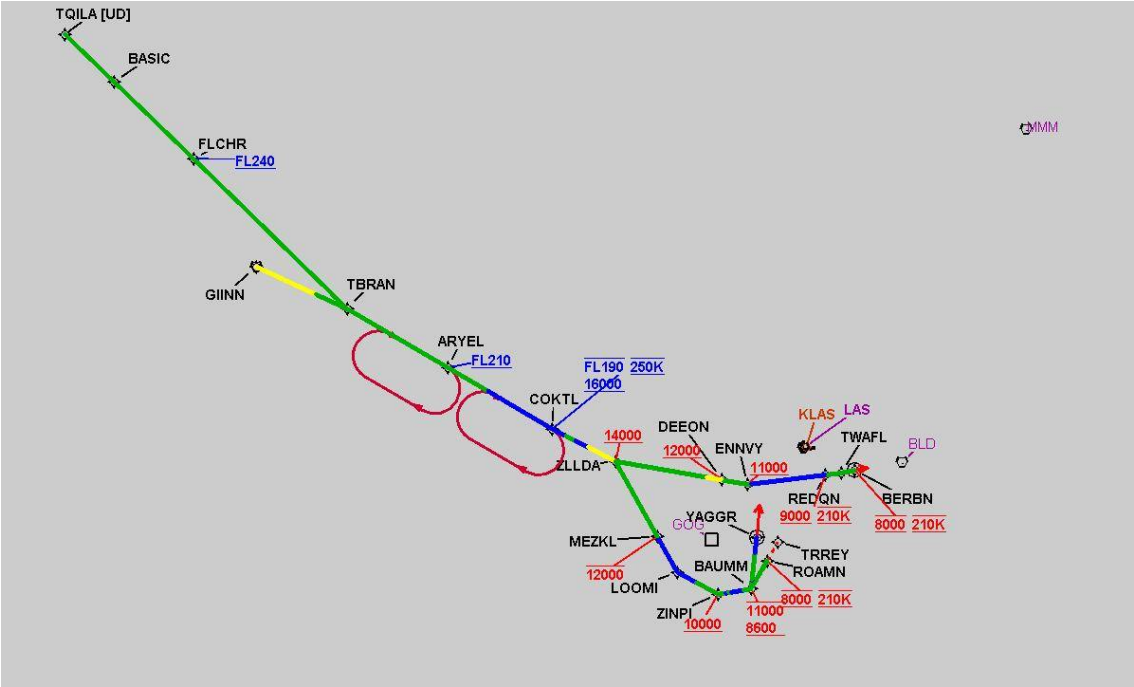
#	Name	Lat/Lon	MAGVAR	Range	Elevation [ft]	Frequency	Replaces	Status
1	PMD FAA 698165-45 PMD [IFPA]	N34° 37' 53.03", W118° 03' 49.76"	15.0 E	130	2509.8	114.5	PMD FAA 698165-45	
ESV:		Bearing [True]: 21.0° to 32.0° Bearing [Mag]: 6.0° to 17.0°				Arc Distance: Out to 160.0 NM Altitude: 20900.0 to 21900.0 ft		
2	DAG FAA 704130-35 DAG [IFPA]	N34° 57' 44.84", W116° 34' 41.40"	15.0 E	40	1760	113.2	DAG FAA 704130-35	
ESV:		Bearing [True]: 4.0° to 40.0° Bearing [Mag]: 349.0° to 25.0°				Arc Distance: Out to 109.0 NM Altitude: 10900.0 to 23700.0 ft		
3	MMM FAA 698159-45 MMM [IFPA]	N36° 46' 09.31", W114° 16' 38.83"	16.0 E	40	2106.3	114.3	MMM FAA 698159-45	
ESV:		Bearing [True]: 222.0° to 255.0° Bearing [Mag]: 206.0° to 239.0°				Arc Distance: Out to 79.0 NM Altitude: 10800.0 to 16000.0 ft		

## DME DME Assessment Results for COKTL2 path ZLLDA\_ROAMN



DME DME Assessment Results for COKTL2 path ZLLDA\_ROAMN

Graphic Depiction 1



DME ESVs								
#	Name	Lat/Lon	MAGVAR	Range	Elevation [ft]	Frequency	Replaces	Status
1	DAG FAA 704130-35 DAG [IFPA]	N34° 57' 44.84", W116° 34' 41.40"	15.0 E	40	1760	113.2	DAG FAA 704130-35	
ESV:		Bearing [True]: 4.0° to 40.0° Bearing [Mag]: 349.0° to 25.0°				Arc Distance: Out to 109.0 NM Altitude: 10900.0 to 23700.0 ft		
2	MMM FAA 698159-45 MMM [IFPA]	N36° 46' 09.31", W114° 16' 38.83"	16.0 E	40	2106.3	114.3	MMM FAA 698159-45	
Restriction:		Bearing [True]: 296.0° to 351.0° Bearing [Mag]: 280.0° to 335.0°				Distance: Beyond 22.0 NM Altitude: Below 9000.0 ft		
Restriction:		Bearing [True]: 76.0° to 91.0° Bearing [Mag]: 60.0° to 75.0°				Distance: Beyond 27.0 NM Altitude: Below 9500.0 ft		
Restriction:		Bearing [True]: 126.0° to 151.0° Bearing [Mag]: 110.0° to 135.0°				Distance: Beyond 15.0 NM Altitude: Below 9999.0 ft		
Restriction:		Bearing [True]: 126.0° to 151.0° Bearing [Mag]: 110.0° to 135.0°				Distance: All Altitude: Below 11500.0 ft		
Restriction:		Bearing [True]: 91.0° to 126.0° Bearing [Mag]: 75.0° to 110.0°				Distance: Beyond 32.0 NM Altitude: Below 9600.0 ft		
ESV:		Bearing [True]: 222.0° to 255.0° Bearing [Mag]: 206.0° to 239.0°				Arc Distance: Out to 79.0 NM Altitude: 10800.0 to 16000.0 ft		
3	PMD FAA 698165-45 PMD [IFPA]	N34° 37' 53.03", W118° 03' 49.76"	15.0 E	130	2509.8	114.5	PMD FAA 698165-45	
Restriction:		Bearing [True]: 135.0° to 160.0° Bearing [Mag]: 120.0° to 145.0°				Distance: Beyond 20.0 NM Altitude: Below 15500.0 ft		
Restriction:		Bearing [True]: 160.0° to 165.0° Bearing [Mag]: 145.0° to 150.0°				Distance: Beyond 20.0 NM Altitude: Below 14500.0 ft		
ESV:		Bearing [True]: 21.0° to 32.0° Bearing [Mag]: 6.0° to 17.0°				Arc Distance: Out to 160.0 NM Altitude: 20900.0 to 21900.0 ft		