
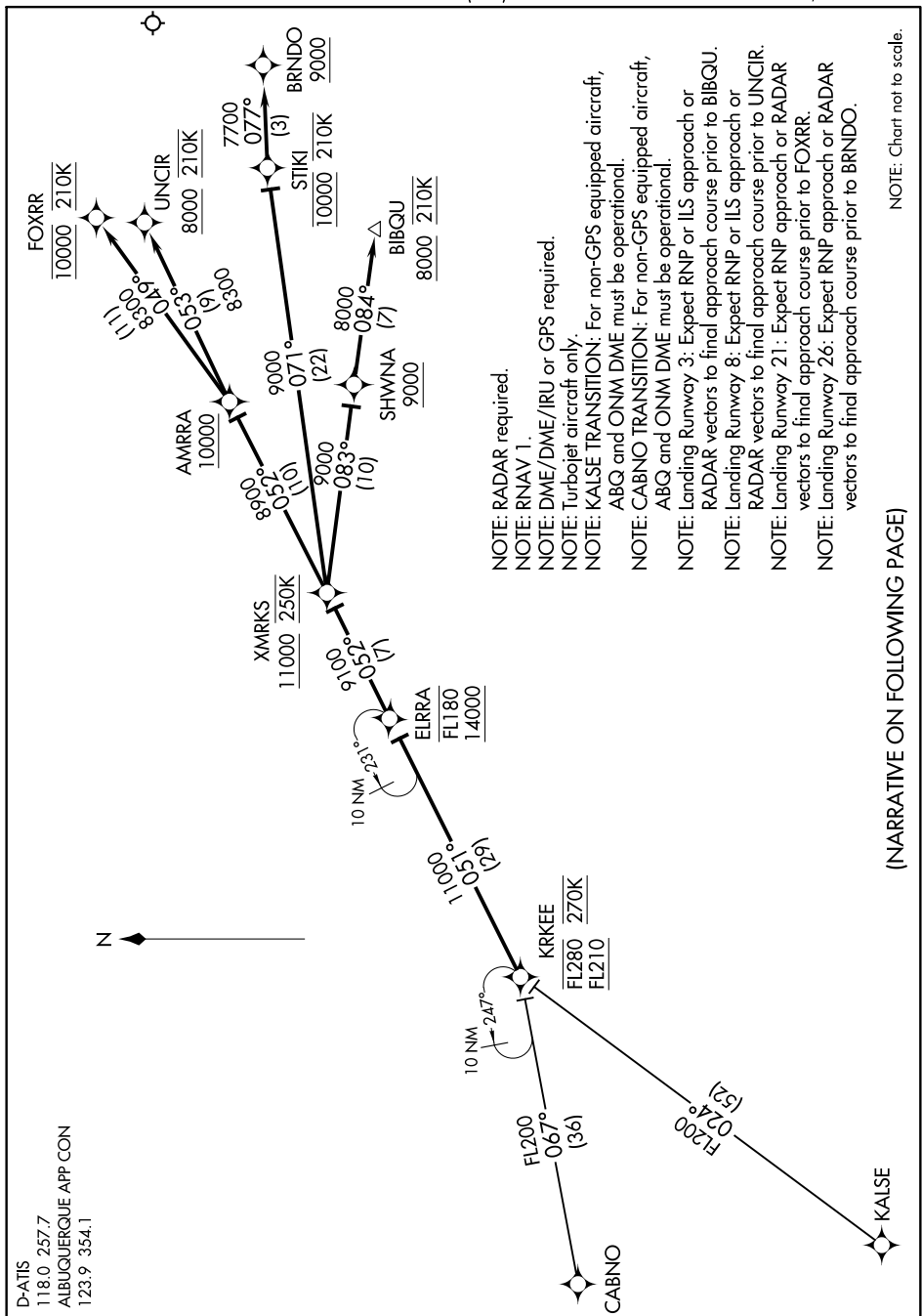


Flight Procedures Cover Page	Task Action: Cancellation	Task Type: STAR	Estimated Chart Date: 12/02/2021	APWS Task ID: 3E6A6C27E0A640078FD82845EEBEB0AA	APWS Project ID: 0AFE3085FC34DE488BBD4472D250BDB
Procedure: STAR KRKEE THREE (RNAV) ALBUQUERQUE INTL NM KABQ		Enroute: YES	Specialist: Mitchell, Tyler		Agreement Number:
Airport ID: KABQ		Airport City: ALBUQUERQUE			State: NM
Facility ID:	Facility Type:	Flight Inspection Remark Type:			
<p>Procedure Comments: CONTACT LONNIE EVERHART: 405-954-4576</p> <div style="text-align: right; margin-top: 500px;"> 08/13/2021  </div>					



(NARRATIVE ON FOLLOWING PAGE)

NOTE: Chart not to scale.

KRKEE THREE ARRIVAL (RNAV)

(KRKEE.KRKEE3) 08JAN15

ALBUQUERQUE, NEW MEXICO

ALBUQUERQUE INTL SUNPORT (ABQ)

ARRIVAL ROUTE DESCRIPTION

CABNO TRANSITION (CABNO.KRKEE3)

KALSE TRANSITION (KALSE.KRKEE3)

From KRKEE on track 051° to cross ELRRA between 14000 and FL180, then on track 052° to cross XMRKS at or above 11000 and at 250K.

LANDING RUNWAY 3: From XMRKS on track 083° to cross SHWNA at or above 9000, then on track 084° to cross BIBQU at or above 8000 and at 210K. Expect RNAV (RNP) or ILS approach or RADAR vectors to final approach course.

LANDING RUNWAY 8: From XMRKS on track 052° to cross AMRRA at or above 10000, then on track 053° to cross UNCIR at or above 8000 and at 210K. Expect RNAV (RNP) approach or ILS approach or RADAR vectors to final approach course.

LANDING RUNWAY 21: From XMRKS on track 052° to cross AMRRA at or above 10000, then on track 049° to cross FOXRR at 10000 and at 210K. Expect RNAV (RNP) approach or RADAR vectors to final approach course.

LANDING RUNWAY 26: From XMRKS on track 071° to cross STIKI at 10000 and at or below 210K, then on track 077° to cross BRNDO at or above 9000. Expect RNAV (RNP) approach or RADAR vectors to final approach course.