

Flight Procedures Cover Page	Task Action: FLIGHT CHECK	Task Type: IAP	Estimated Chart Date: 02/25/2021	APWS Task ID: 3E4427F5817B42588974FCB8E09BE49E	APWS Project ID: BDC1FBB6A6A3473EAD29126F238403BB
Procedure: ILS or LOC RWY 36 AMDT 9B		Enroute: NO	Specialist: Dean, Kelly		Agreement Number:
Airport ID: KGRB	Airport Name: GREEN BAY-AUSTIN STRAUBEL INTL	Airport City: GREEN BAY			State: WI
Facility ID:	Facility Type:	Flight Inspection Remark Type: New FC Slot			
<div>Procedure Comments:</div> <div>POC FOR THIS ACTION IS DON LANIER 405-954-8242</div> <div>P-NOTAM FDC 1/5514</div> <div>QUALITY 41 CHECKED</div> <div>QUALITY 8 CHECKED</div>					

<b>FIPC BASIC FORM</b>							
<b>PROCEDURE:</b> ILS OR LOC RWY 36 AMDT 9B			<b>AIRPORT NAME:</b> GREEN BAY-AUSTIN STRAUBEL INTL		<b>AIRPORT ID:</b> KGRB	<b>SPECIAL CONTROL NO:</b> BP-03-193-21	
<b>FAC ID:</b> SGZ		<b>CITY:</b> GREEN BAY			<b>ST:</b> WI	<b>ORIG CHART DATE:</b> 08/12/2021	
<b>DFL TYPE:</b> PROC/A	<b>THIRD PARTY:</b> <input type="checkbox"/> YES	<b>EST. TIME ON SITE:</b> 0.4	<b>REIMB. NUMBER:</b>		<b>PTS TASK ID:</b>		
<b>PREFLIGHT NOTES</b>							
<b>REVIEWER:</b> scott wiebe					<b>DATE:</b> 04/22/2021		
<b>COMMENTS:</b>					<b>CHECK ONE:</b>		
					<input checked="" type="checkbox"/> FLT CK REQ <input type="checkbox"/> NFCR <input type="checkbox"/> REJECT		
							YES
					<b>CPV COMPLETE?</b>		X
<b>PROCEDURE RESULTS</b>							
<b>INSPECTION DATE:</b> 04/21/2021		<b>CREW #:</b> VN219	<b>N #:</b> N77	<b>INSTRUMENT PROCEDURE STATUS:</b> <input checked="" type="checkbox"/> SAT <input type="checkbox"/> SAT W/CHANGES <input type="checkbox"/> UNSAT		<b>ARINC CODING:</b> <input type="checkbox"/> SAT <input type="checkbox"/> SAT/GOLD <input type="checkbox"/> UNSAT	
<b>FLIGHT INSPECTOR SIGNATURE:</b> scott wiebe @ 04/22/2021 06:50			<b>PRINTED NAME:</b> WIEBE, GREGORY SCOTT				<b>NOTAM INITIATED?</b> <input type="checkbox"/> YES <input checked="" type="checkbox"/> NO
<b>FLIGHT INSPECTOR REMARKS:</b>							
<b>IN-FLIGHT OBSTACLE REPORT</b>							
<b>OBSTRUCTION ID #:</b>	<b>COORDINATES OR LOCATION:</b>		<b>GNSS ALTITUDE (MSL):</b>		<b>BAROMETRIC ALTITUDE (MSL):</b>		<b>HEIGHT ABOVE GROUND LEVEL:</b>

LOC I-SGZ <b>109.9</b>	APP CRS <b>002°</b>	Rwy Idg TDZE Apt Elev	<b>8201</b> <b>684</b> <b>695</b>
---------------------------	------------------------	-----------------------------	---

ILS or LOC RWY 36  
GREEN BAY-AUSTIN STRAUBEL INTL (GRB)

**V** For inop ALS, increase S-LOC 36 Cats C/D visibility to 1 1/2 SM.

**NA** \*\*RVR 1800 authorized with use of FD or AP or HUD to DA.

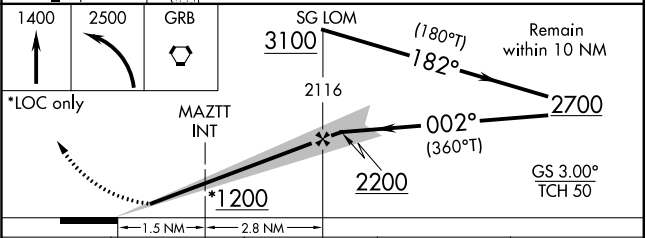
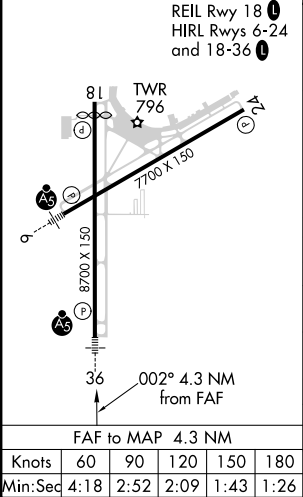
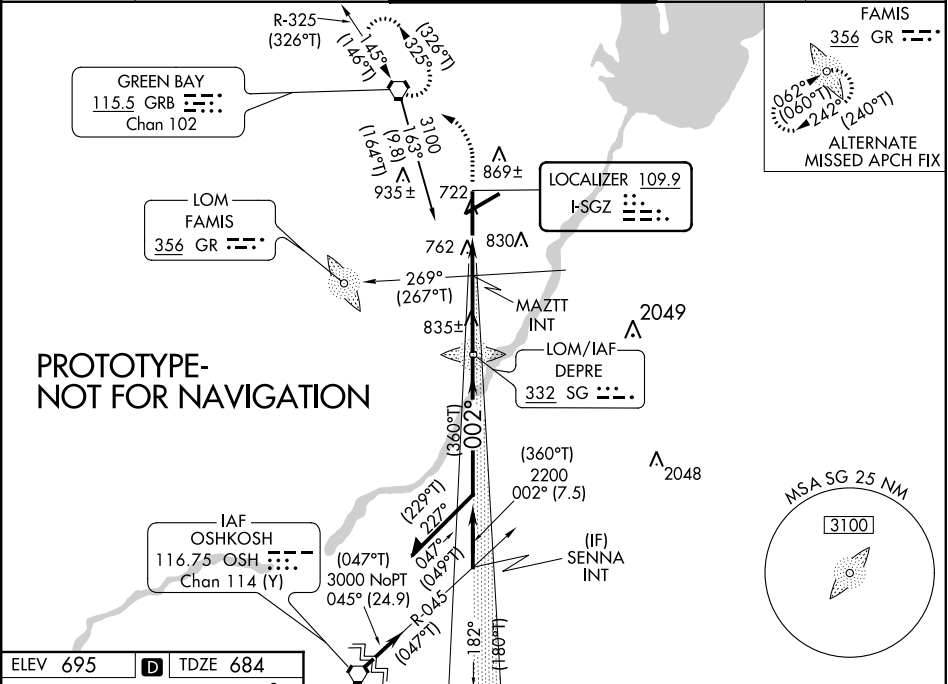
ASR

**MALSR**

**AS**

**MISSED APPROACH:** Climb to 1400 then climbing left turn to 2500 direct GRB VORTAC and hold.

ATIS <b>124.1</b>	GREEN BAY APP CON * <b>119.4 338.2</b>	GREEN BAY TOWER * <b>118.7 (CTAF) 257.8</b>	GND CON <b>121.9</b>	CLNC DEL <b>121.75</b>
----------------------	---	--	-------------------------	---------------------------



CATEGORY	A	B	C	D
S-ILS 36	**884/24 200 (200-1/2)			
S-LOC 36	1200/24	516 (600-1/2)	1200/55	516 (600-1)
CIRCLING	1200-1	505 (600-1)	1300-1 3/4 605 (700-1 3/4)	1300-2 605 (700-2)
MAZTT FIX MINIMUMS				
S-LOC 36	1020/24	336 (400-1/2)	1020/26	336 (400-1/2)
CIRCLING	1200-1	505 (600-1)	1300-1 3/4 605 (700-1 3/4)	1300-2 605 (700-2)



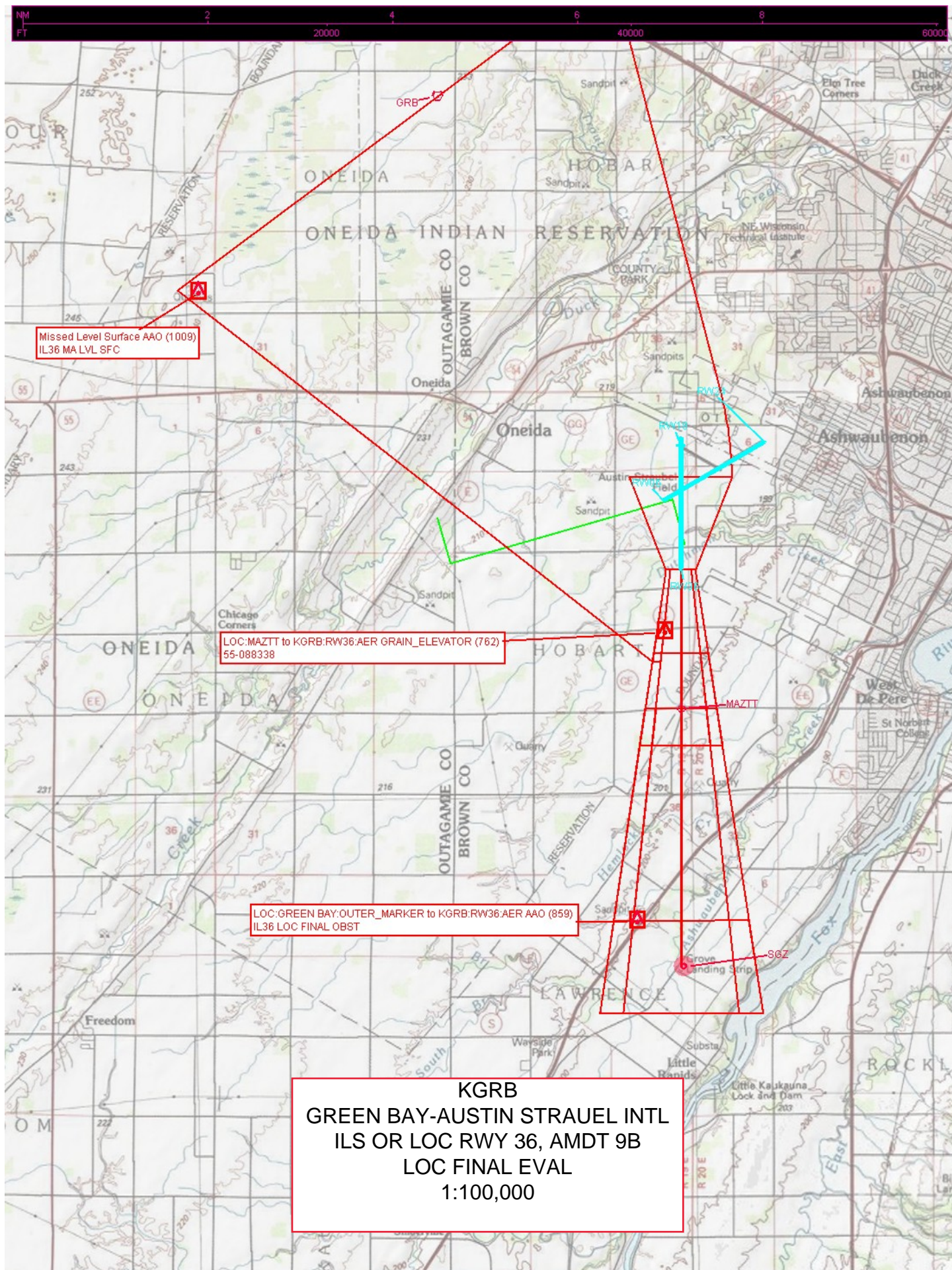
KGRB  
GREEN BAY-AUSTIN STRAUDEL INTL  
CIRCLING EVAL  
1:100,000

Circling CAT C TOWER (935)  
55-081763

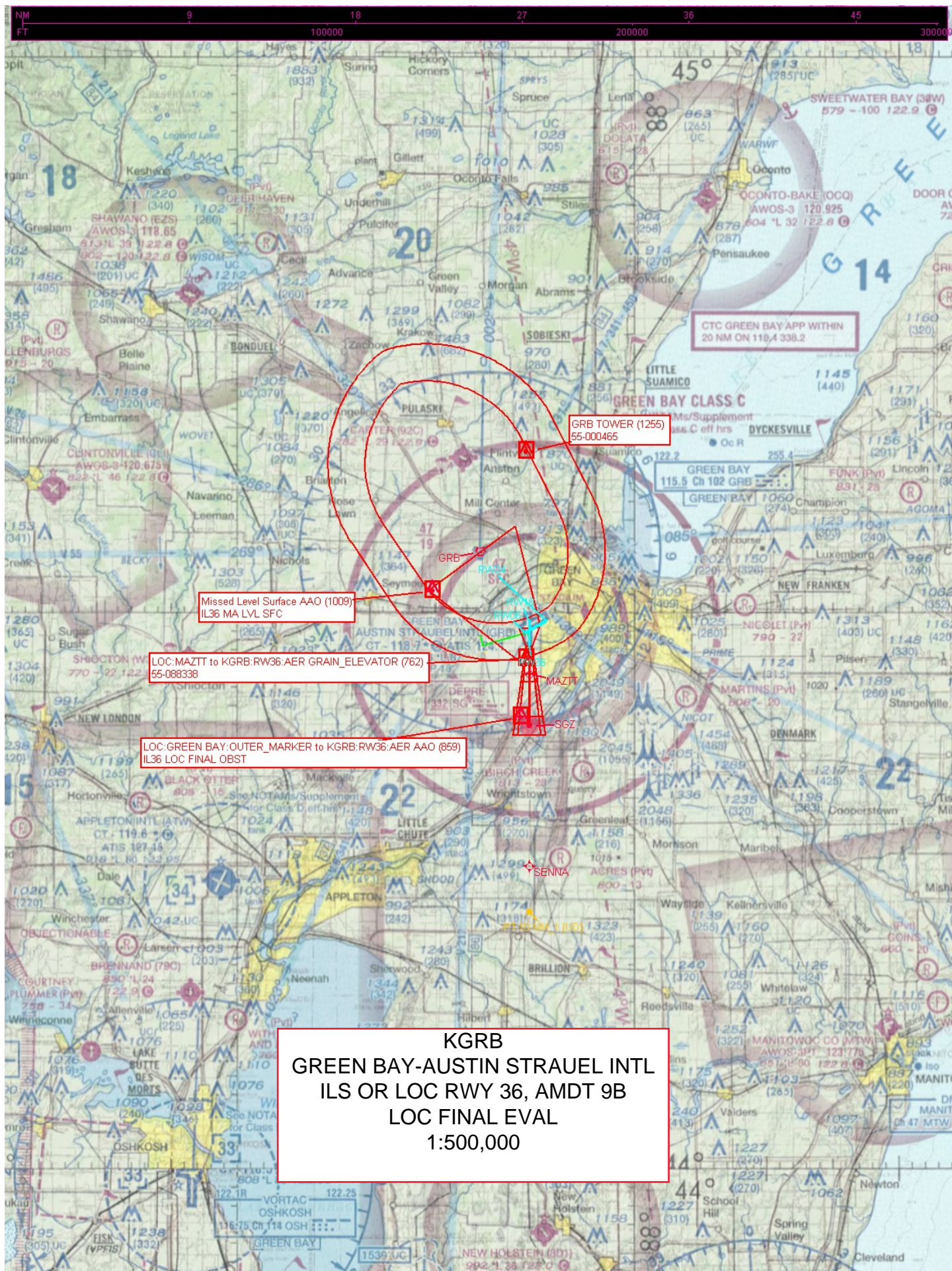
Circling CAT A/B TREE (869)  
CIRC TREE

Circling CAT D STACK (989)  
55-020332





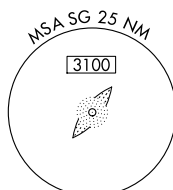
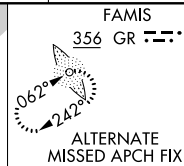






ILS or LOC RWY 36  
GREEN BAY-AUSTIN STRAUBEL INTL (GRB)

**MISSED APPROACH:** Climb to 1400 then climbing left turn to 2500 direct GRB VORTAC and hold.

CLNC DEL  
121.75

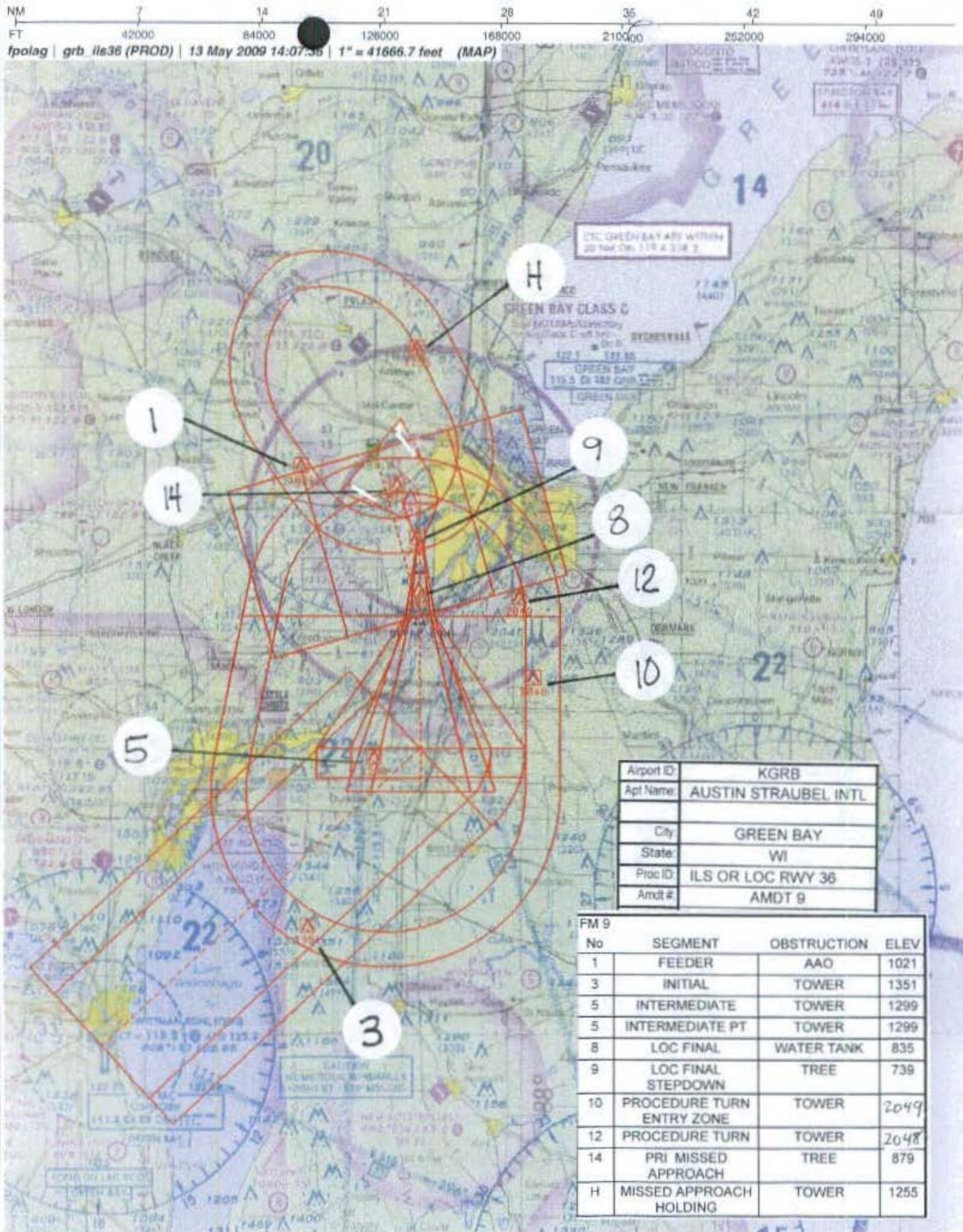
The diagram illustrates a ship's movement and collision avoidance scenario. A ship is shown moving from a position of 1400 (Longitude) and 2500 (Latitude) towards a target area. The ship's heading is indicated by a curved arrow. A table at the top left shows the ship's position and heading:

1400	2500	GRB
↑	↘	⬢

The ship's movement is labeled "LOC only". The target area is labeled "MAZTT INT". The ship's position is marked with a star and the coordinates 2116 (Longitude) and 2700 (Latitude). The ship's heading is 182°. The target area is labeled "Remain within 10 NM". The ship's position is marked with a star and the coordinates 2116 (Longitude) and 2700 (Latitude). The ship's heading is 182°. The target area is labeled "Remain within 10 NM". The ship's position is marked with a star and the coordinates 2116 (Longitude) and 2700 (Latitude). The ship's heading is 182°. The target area is labeled "Remain within 10 NM".

44°29'N-88°08'W

GREEN BAY-AUSTIN STRAUBEL INTL (GRB)  
W ILS or LOC RWY 36





Airport ID	KGRB	FM			
		9			
Appt Name	AUSTIN STRAUBEL INTL	No	SEGMENT	OBSTRUCTION	ELEV
			ILS FINAL	ASC	
City	GREEN BAY	14	PRI MISSED APPROACH	TREE	879
State	WI				
Proc ID	ILS OR LOC RWY 36				
Amdt #	AMDT 9				

