

Flight Procedures Cover Page	Task Action: FLIGHT CHECK	Task Type: IAP	Estimated Chart Date: 02/20/2025	APWS Task ID: 3E438F45FA0941209A0CE1517C7B5730	APWS Project ID: 3C01D03B77304DCB9C9BC1320B921BEE
Procedure: RNAV (GPS) RWY 14 AMDT 2		Enroute: NO	Specialist: Swinson, Robert		Agreement Number:
Airport ID: F45			Airport City: WEST PALM BEACH		State: FL
Facility ID:	Facility Type:	Flight Inspection Remark Type: New FC Slot			
<div>Procedure Comments: ACTIVE AIRNAV DATA USED FOR KF45 AIRPORT AND RUNWAYS. CONTACT: JOSEPH ZEDER 1-405-954-9111</div> <div>QUALITY 20 CHECKED</div> <div>QUALITY 41 CHECKED</div>					

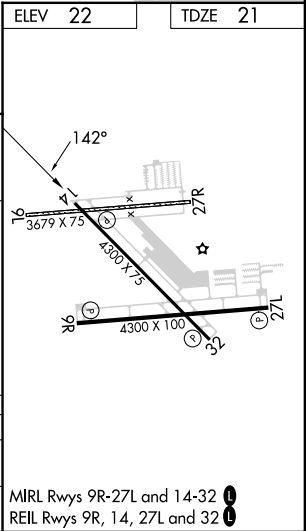
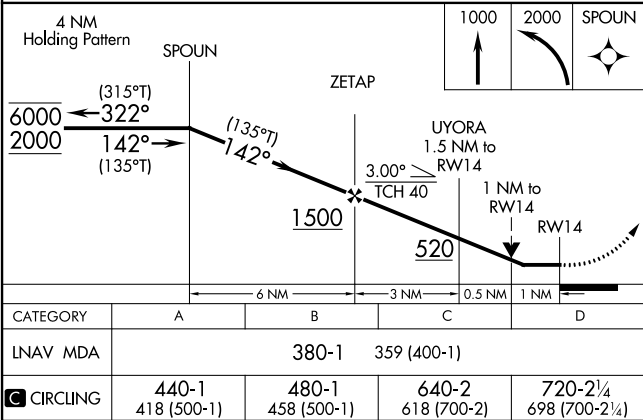
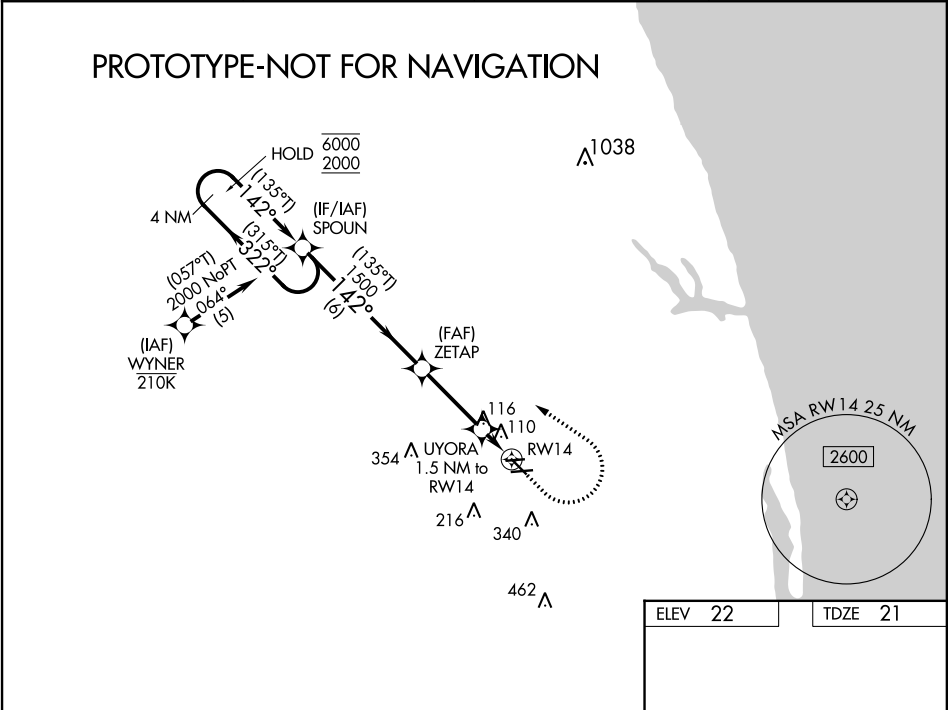
FIPC BASIC FORM							
PROCEDURE: RNAV (GPS) RWY 14 AMDT 2			AIRPORT NAME: NORTH PALM BEACH COUNTY		AIRPORT ID: KF45	SPECIAL CONTROL NO: AG-11-238-24	
FAC ID: KF4514.02		CITY: WEST PALM BEACH			ST: FL	ORIG CHART DATE: 02/20/2025	
DFL TYPE: PROC/G	THIRD PARTY: <input type="checkbox"/> YES	EST. TIME ON SITE: 0.5	REIMB. NUMBER: AC0721		PTS TASK ID: 3E438F45FA0941209A0CE1517C7B5730		
PREFLIGHT NOTES							
REVIEWER:					DATE:		
COMMENTS:					CHECK ONE:		
					<input type="checkbox"/> FLT CK REQ <input type="checkbox"/> NFCR <input type="checkbox"/> REJECT		
							YES
					CPV COMPLETE?		X
PROCEDURE RESULTS							
INSPECTION DATE: 02/11/2025		CREW #: VN426	N #: N77	INSTRUMENT PROCEDURE STATUS: <input checked="" type="checkbox"/> SAT <input type="checkbox"/> SAT W/CHANGES <input type="checkbox"/> UNSAT		ARINC CODING: <input checked="" type="checkbox"/> SAT <input type="checkbox"/> SAT/GOLD <input type="checkbox"/> UNSAT	
FLIGHT INSPECTOR SIGNATURE: robert e williams @ 02/12/2025 10:37			PRINTED NAME: WILLIAMS, ROBERT EMIL			NOTAM INITIATED? <input type="checkbox"/> YES <input checked="" type="checkbox"/> NO	
FLIGHT INSPECTOR REMARKS: KF4514.02. PROC/G. AG-11-238-24: North Palm Beach County General Aviation, West Palm Beach FL. RNAV (GPS) RWY 14 AMDT 2. SAT							
IN-FLIGHT OBSTACLE REPORT							
OBSTRUCTION ID #:	COORDINATES OR LOCATION:		GNSS ALTITUDE (MSL):		BAROMETRIC ALTITUDE (MSL):		HEIGHT ABOVE GROUND LEVEL:

WAAS CH 40310 W14A	APP CRS 142°	Rwy Idg TDZE Apt Elev	4300 21 22
--	------------------------	-----------------------------	---------------------------------------

RNAV (GPS) RWY 14

NORTH PALM BEACH COUNTY GENERAL AVIATION (F45)

RNP APCH - GPS.		MISSED APPROACH: Climb to 1000 then climbing left turn to 2000 direct SPOUN and hold.	
AWOS-3 119.975	PALM BEACH APP CON 128.3 317.4	CLNC DEL 120.825	UNICOM 123.075 (CTAF)



WAAS CH 40310 W14A	APP CRS 142°	Rwy Idg 4300 TDZE 21 Apt Elev 22
--	------------------------	---

OLD

RNAV (GPS) RWY 14

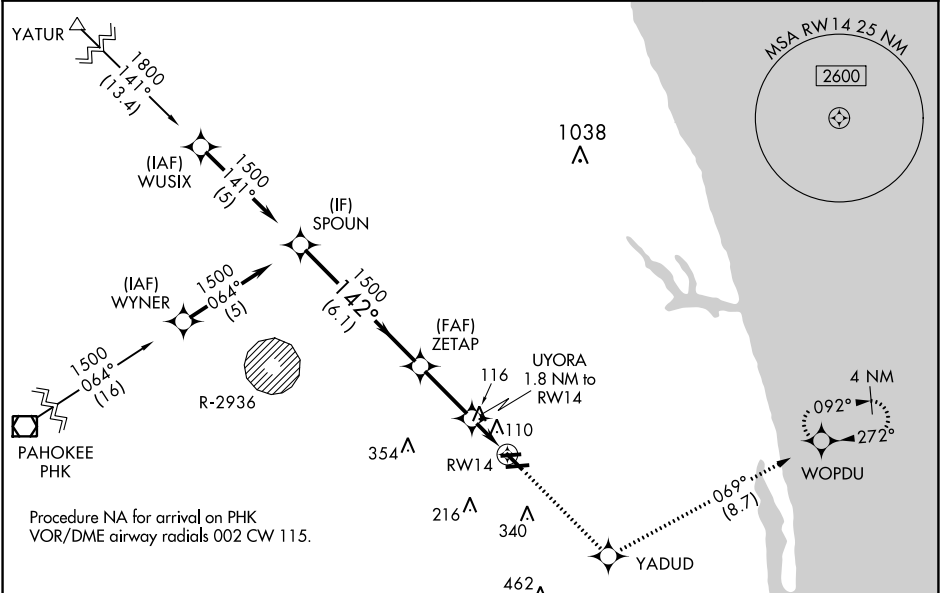
NORTH PALM BEACH COUNTY GENERAL AVIATION (F45)

NA

Circling NA to Rwy 9L and 27R. For uncompensated Baro-VNAV systems, LNAV/VNAV NA below -1.5°C (5°F) or above 54°C (130°F). DME/DME RNP-0.3 NA. When local altimeter not received, use Palm Beach Intl altimeter setting and increase LPV DA to 352 feet; increase LNAV/VNAV DA to 412 feet and all visibilities ½ SM; increase all MDA 40 feet and LNAV Cats C/D visibility ½ SM. Rwy 14 helicopter visibility reduction below ¾ SM NA. Baro-VNAV and VDP NA when using Palm Beach Intl altimeter setting.

MISSED APPROACH:
Climb to 2300 direct YADUD and on track 069° to WOPDU and hold.

AWOS-3 119.975	PALM BEACH APP CON 128.3 317.4	CLNC DEL 120.825	UNICOM 123.075 (CTAF) 0
--------------------------	--	----------------------------	-----------------------------------



VGSI and RNAV glidepath not coincident (VGSI Angle 3.00/TCH 40).

2300 YADUD tr 069° WOPDU

*LNAV only.

SPOUN ZETAP UYORA 1.8 NM to RW14 *1 NM to RW14

GP 3.04° TCH 51

1500 142° 1500 640

6.1 NM 2.6 NM 0.8 NM 1 NM

ELEV 22 TDZE 21

142° to RW14

36° 36' 9" X 75' 27R

4300 X 75

4300 X 100

36 32 27L

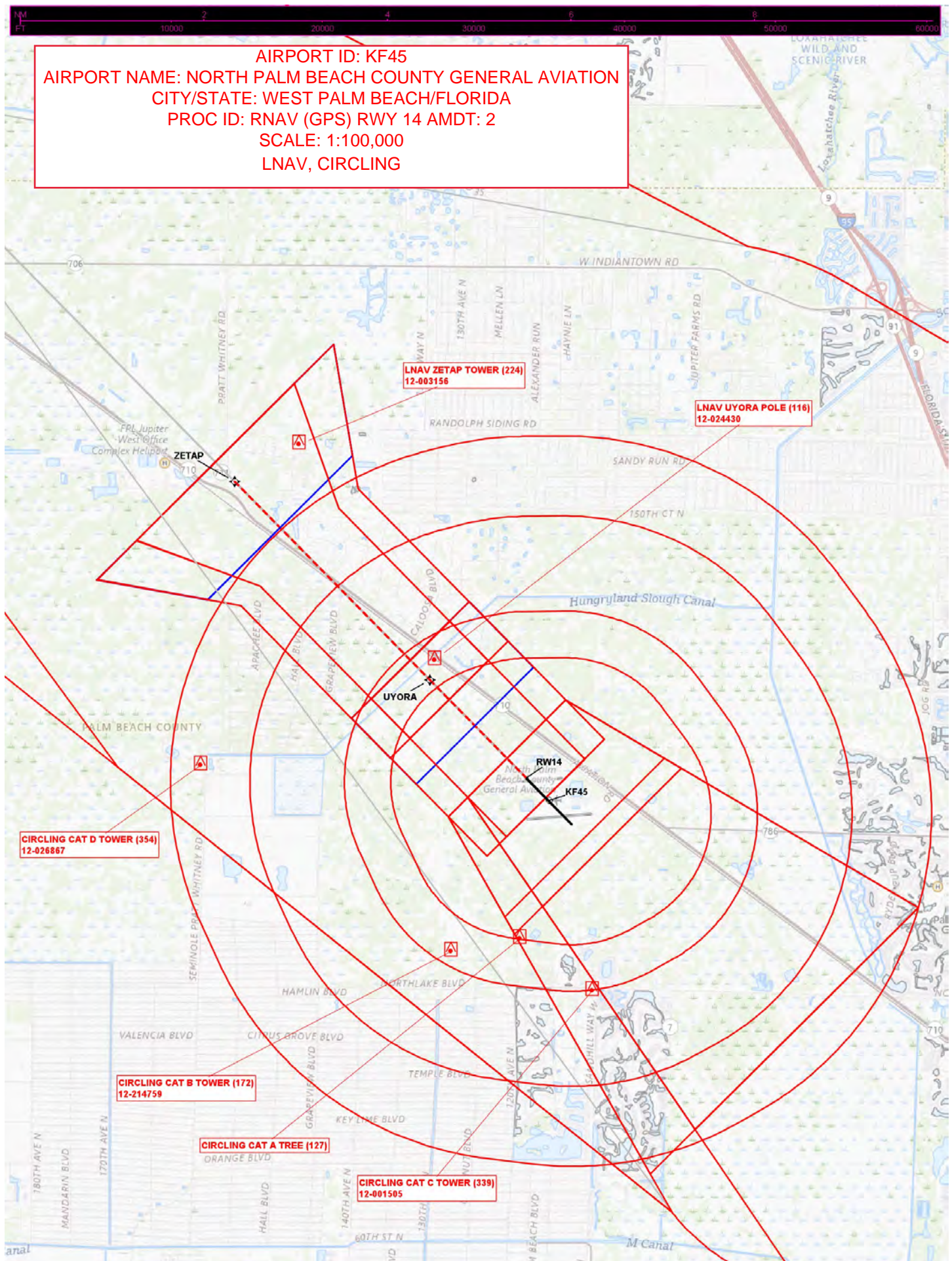
CATEGORY	A	B	C	D
LPV DA		324-7/8	303 (400-7/8)	
LNAV/VNAV DA		384-1	363 (400-1)	
LNAV MDA		380-1	359 (400-1)	
CIRCLING	460-1 438 (500-1)	480-1 458 (500-1)	700-2 678 (800-2)	720-2 1/4 698 (700-2 1/4)

MIRL Rwy 9R-27L and 14-32 0
REIL Rwy 9R, 14, 27L and 32 0

SE-3, 11 JUL 2024 to 08 AUG 2024

SE-3, 11 JUL 2024 to 08 AUG 2024

LNAV, CIRCLING



IAF, INT, FAF, SD, MA, HOLD

