

Flight Procedure Tracking Form		Action: AMENDMENT	Task Type: IAP	Date Open: 11/04/2019	Task #: 2019110435248401003	Request #: 20191104352484
Procedure: APPROACH VOR RWY 31 AMDT 8E			Airport ID: KTVF	Airport: THIEF RIVER FALLS RGNL		Reimbursable #: NO
City: THIEF RIVER FALLS	ST: MN	GPS #:	Estimated Chart Date: 04/23/2020		FICO #:	
Fac ID: N/A		Fac. Type:		Specialist: RUSSELL ROSLEWSKI		
Procedure Review						
	Rec'd	Rel'd	Full Name	Comments		
Lead:	11/12/2019			QUALITY		
QA:				22 2.5.2020 BD		
Liaison:				CHECKED		
Procedure Comments:			Remark Type: INFORMATION			
P-NOTAM 0/5078 NEW CIRCLING AREAS BASED ON EXISTING PROCEDURES AT AIRPORT. PROCESSED IAW AIRCRAFT OPERATIONS GROUP (AJW-33) MEMO, OCTOBER 3, 2018, SUBJECT: FLIGHT INSPECTION REVIEW NOT REQUIRED. DAVE DANNER, 405-954-5077						

QUALITY
15
CHECKED

VOR/DME TVF 108.4 Chan 21	APP CRS 312°	Rwy Idg 6304 TDZE 1114 Apt Elev 1119
---	------------------------	---

APP CRS
312°

Rwy Idg	6304
TDZE	1114
Apt Elev	1119

VOR RWY 31
THIEF RIVER FALLS RGNL (TVF)



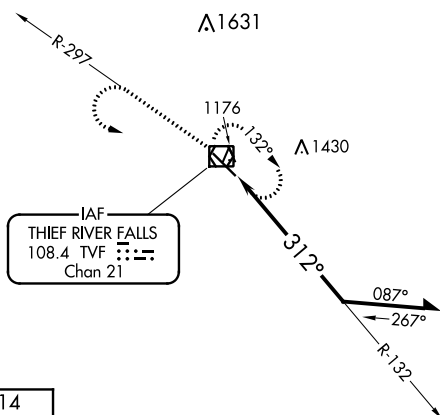
Circling Rwy 4,22 NA at night.



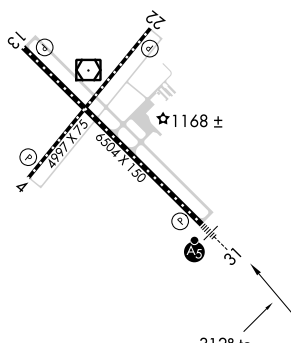
MISSED APPROACH: Climb to 2700 on TVF R-297 then left turn direct TVF VOR/DME and hold.

AWOS-3PT
119.025

MINNEAPOLIS CENTER
132.15 269.6

UNICOM
122.8 (CTAF) **L**

ELEV 1119		TDZE 1114
-----------	---	-----------

HIRL Rwy 13-31 **L**

MIRL Rwy 4-22 L

REIL Rwy 4, 13, and 22 L

TDZ/CL Rwy's 13 and 31

2700
↑
TVF R-297



TVF
VOR/DME

Remain
within 10 NM

-1.328

$$\geq \underline{2700}$$

CATEGORY	A	B	C	D
S-31	1660-1/2	546 (600-1/2)	1660-1 1/8	546 (600-1 1/8)
CIRCLING	1660-1	541 (600-1)	1660-1 5/8 541 (600-1 5/8)	1680-2 561 (600-2)

THIEF RIVER FALLS, MINNESOTA

Amdt 8D 01MAR18

THIEF RIVER FALLS RGNI (TVF)

VOR RWY 31

48°04'N-96°11'W

