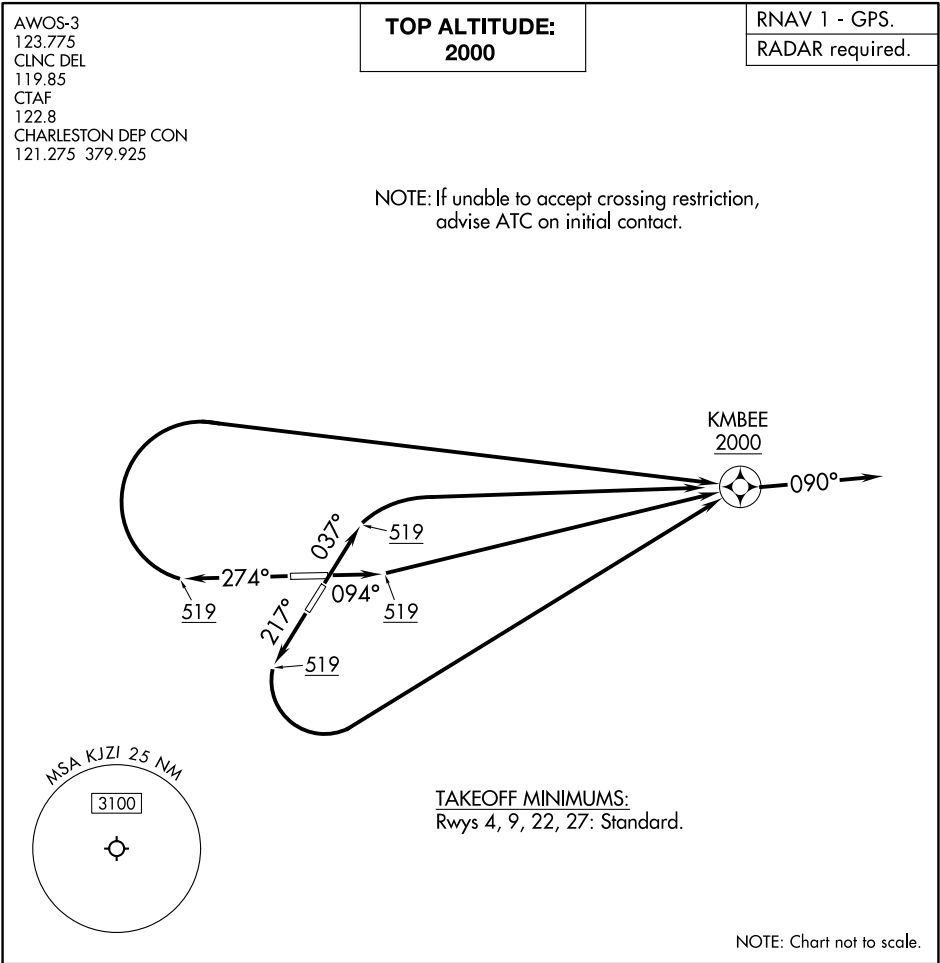


Flight Procedures Cover Page	Task Action: Cancellation	Task Type: SID	Estimated Chart Date: 10/02/2025	APWS Task ID: 3D7FF6D741FF490689D05500C3D52F41	APWS Project ID: 6DCCB3A7D6D643B1AE40AC98D0F06231
Procedure: KMBEE TWO (RNAV) SID		Enroute: YES	Specialist: Dugan, Joshua		Agreement Number:
Airport ID: KJZI			Airport City: CHARLESTON		State: SC
Facility ID:	Facility Type:	Flight Inspection Remark Type:			
<div>Procedure Comments:</div> <div>CANCEL PROCEDURE.</div> <div>CONTACT ROBERT HAMILTOM AJV-A433 405-954-4608.</div> <div><div>QUALITY 23 CHECKED</div></div>					



DEPARTURE ROUTE DESCRIPTION

TAKEOFF RUNWAY 4: Climb on heading 037° to 519, then right turn direct KMBEE, cross KMBEE at or above 2000, thence. . .

TAKEOFF RUNWAY 9: Climb on heading 094° to 519, then direct KMBEE, cross KMBEE at or above 2000, thence. . .

TAKEOFF RUNWAY 22: Climb on heading 217° to 519, then left turn direct KMBEE, cross KMBEE at or above 2000, thence. . .

TAKEOFF RUNWAY 27: Climb on heading 274° to 519, then right turn direct KMBEE, cross KMBEE at or above 2000, thence. . .

. . .fly heading 090° or as assigned by ATC for RADAR vectors, maintain 2000.
Expect filed altitude 10 minutes after departure.