




Flight Procedure Tracking Form		Action: AMENDMENT	Task Type: IAP	Date Open: 10/01/2019	Task #: 2019100132504201001	Request #: 20191001325042
Procedure: VOR RWY 7 AMDT 3B			Airport ID: KN40	Airport: SKY MANOR		Reimbursable #: NO
City: PITTSTOWN	ST: NJ	GPS #:	Estimated Chart Date: 03/26/2020		FICO #:	
Fac ID: SBJ		Fac. Type: VOR_DME			Specialist: STEVEN DOUGHERTY	
Procedure Review						
	Rec'd	Rel'd	Full Name	Comments		
Lead:	10/01/2019			 Digitally signed by		
QA:				 BRIAN J BICKETT		
Liaison:				 Jan 22, 2020		
Procedure Comments: ENROUTE-NON Remark Type: INFORMATION						
<p>PROCESSED IAW AIRCRAFT OPERATIONS GROUP (AJW-33) MEMO, OCTOBER 3, 2018, SUBJECT: FLIGHT INSPECTION REVIEW NOT REQUIRED.</p> <p>P-NOTAM.</p> <p>CIRCLING ICON.</p> <p>ACTIVE DATA USED.</p> <p>DAVID DANNER, AJV-A421, 405-954-5077.</p>						

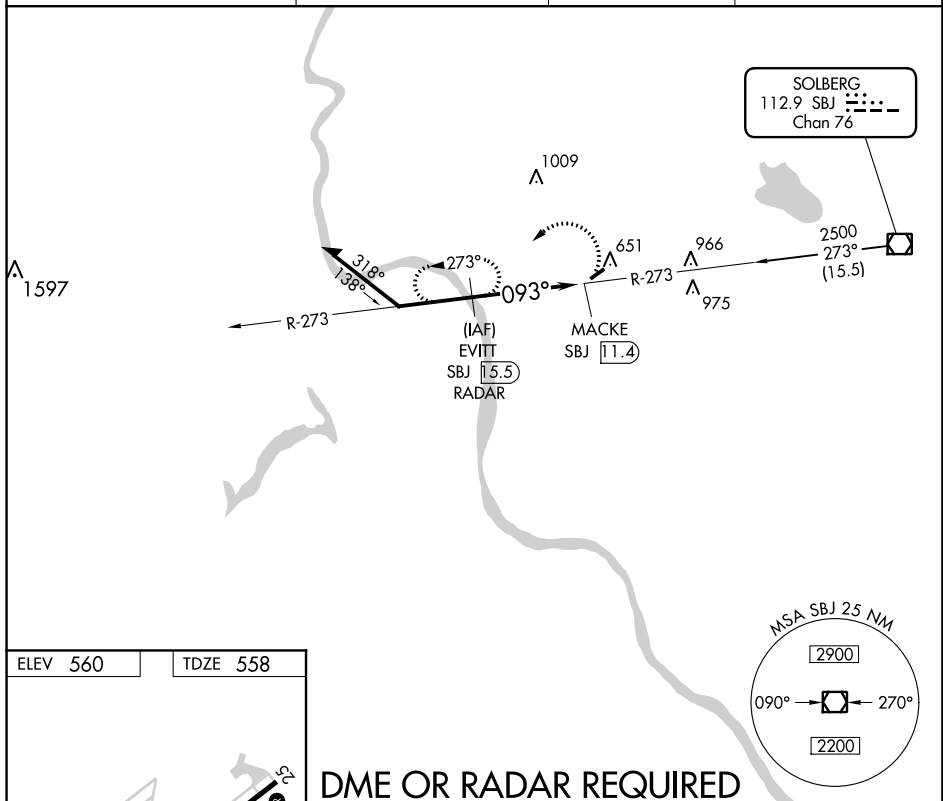
AL-5803 (FAA)

17173

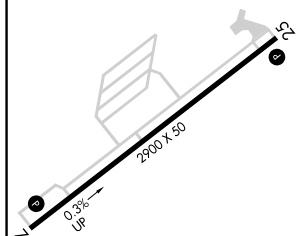
VOR RWY 7
SKY MANOR (N40)

MISSED APPROACH: Climbing left turn to 2500 on SBJ VOR/DME R-273 to EVITT/SBJ 15.5 DME/RADAR and hold.

LEHIGH VALLEY INTL ASOS 126.975	ALLENTOWN APP CON 119.65 124.45 397.9	GCO 121.725	UNICOM 122.975 (CTAF) 0
---	---	-----------------------	-----------------------------------



ELEV 560		TDZE 558
----------	--	----------



MIRL Rwy 7-25 **L**
REIL Rwy 7 and 25 **L**

FAF to MAP 4.1 NM					
Knots	60	90	120	150	180
Min:Sec	4:06	2:44	2:03	1:38	1:22

PITTSTOWN, NEW JERSEY

Amdt 3A 22JUN17

40°34'N-74°59'W

SKY MANOR (N40)
VOR RWY 7