

DME DME Assessment Results for KZLOV1 path KDTW:RW03L:DER_KZLOV

Results Summary

Flyability:	Completed
DME/DME:	Completed - No Critical DMEs
Name:	Robert CTR Ellis
Project File:	C:\Users\Robert CTR Ellis\Documents\Project Files\DTW\KDTW KZLOV ONE (RNAV) SID 20210722\KDTW KZLOV ONE (RNAV) SID DME ELLIS 20210721.tgs
Output File:	C:\Users\Robert CTR Ellis\Documents\Project Files\DTW\KDTW KZLOV ONE (RNAV) SID 20210722\KDTW [IFPA] KZLOV1 20210722_1042 CDT\KDTW-RW03L-DER_KZLOV\KDTW KZLOV1 SID KDTW RW03L KZLOV 20210722_1042 CDT.pdf
Procedure Name:	KZLOV1
Software: DmeDmePlugin:	6.3.0
Date/Time:	07/22/2021 10:42 CDT
Databases:	DTED Level 0 MAX

Failures

No Failures

Warnings

No Warnings

Notes For Flight Check

None

Flight Plan

Name	Type	Lat/Lon	Altitude (ft)	VNAV Mode	Ground Speed (kts)	Turn Type	Leg Type
KDTW:RW03L:DER	WP	N42° 13' 41.85", W083° 20' 10.11"	631.4	VNAV	130	FLY_BY	TF
BESST	WP	N42° 16' 56.69", W083° 13' 21.04"	2500	VNAV	230	FLY_BY	TF
SWNDL	WP	N42° 12' 55.80", W083° 04' 22.44"	4000	VNAV	230	FLY_BY	TF
KZLOV	WP	N42° 04' 24.81", W082° 44' 07.44"	4000	VNAV	230	FLY_BY	TF
Climb Gradient: 500.0 ft/NM up to 1146.0 ft MSL							

Flyability

Flight Type:	SID
Selected Airport:	KDTW [IFPA]
Climb Gradient:	500.0 ft/NM up to 1146.0 ft MSL
Speeds:	130 at the Runway DER
	145 at the end of the VA or VI leg
	200 Ground Speed to 11000 FT
	240 Ground Speed to 18000 FT
	260 Ground Speed to 24000 FT
	340 Ground Speed above 24000 FT
Descent During a Turn:	Allowed
VNAV Mode:	Flight Plan

DME DME Assessment Results for KZLOV1 path KDTW:RW03L:DER_KZLOV

DME/DME	
RNP:	RNP 2
Flight Mode:	Manual
Line of Sight (DTED Level 0 Max):	Evaluated
Inertial Drift:	Enabled
Initial Drift:	0.558 NM
INS Drift Rate:	8.0 NM/Hour
Range Mode:	OSV
RNP Edges:	Evaluated
Min DME Range:	3.0 NM
DME Types:	DME, VOR-DME, VORTAC
DME Include Angles:	30 to 150
Critical DMEs:	Allowed
DoD Facilities:	Not included
Foreign Facilities:	Not included
High DMEs:	Included
Low DMEs:	Included
Terminal DMEs:	Included
Flight Check DMEs:	Not selected
Higher Altitudes:	Not Evaluated
Near Maximum Altitude:	Not Evaluated
Automatic ESVs:	Not enabled
Disabled DMEs:	None

DME/DME (Continued)										
DMEs Used										
#	Name	Lat/Lon	MAGVAR	Range	Type	Source	Critical	Status	Time	Distance
1	PSI	N42° 42' 03.09", W083° 31' 57.98"	0.0 E	40	L	IFPA	NO	Enabled	71 %	74.5 %
2	DXO	N42° 12' 47.29", W083° 21' 59.99"	6.0 W	130	H	IFPA	NO	Enabled	60.4 %	63 %
3	CRL	N42° 02' 52.90", W083° 27' 27.26"	3.0 W	130	H	IFPA	NO	Enabled	94.8 %	96.7 %
4	DJB	N41° 21' 29.03", W082° 09' 43.09"	5.0 W	130	H	IFPA	NO	Enabled	27.2 %	29.2 %
5	SVM	N42° 24' 31.11", W083° 35' 38.05"	3.0 W	40	L	IFPA	NO	Enabled	84.5 %	85.7 %

Flight Check DME Selection						
Distance [NM]	Selected DMEs					Alternate
0.0						
1.0	CRL	SVM				
2.9	CRL	SVM	PSI	DXO		
17.0	CRL	SVM				
22.0	PSI	CRL	SVM	DXO		
22.1	DJB	CRL	PSI	SVM	DXO	
26.0	DJB	CRL	PSI	SVM		
27.9	DJB	CRL	PSI			
29.5	DJB	CRL	PSI	DXO		

Inertial Drift Segments			
#	Start Location	End Location	Length [NM]
1	N42° 13' 43.72", W083° 20' 08.74"	N42° 14' 36.03", W083° 19' 30.16"	0.9937

Available DMEs by Waypoints		
Waypoint Before	Waypoint After	DME List
KDTW:RW03L:DER	BESST	PSI, DXO, SVM, CRL
BESST	SWNDL	PSI, DXO, SVM, CRL
SWNDL	KZLOV	PSI, DXO, SVM, CRL, DJB

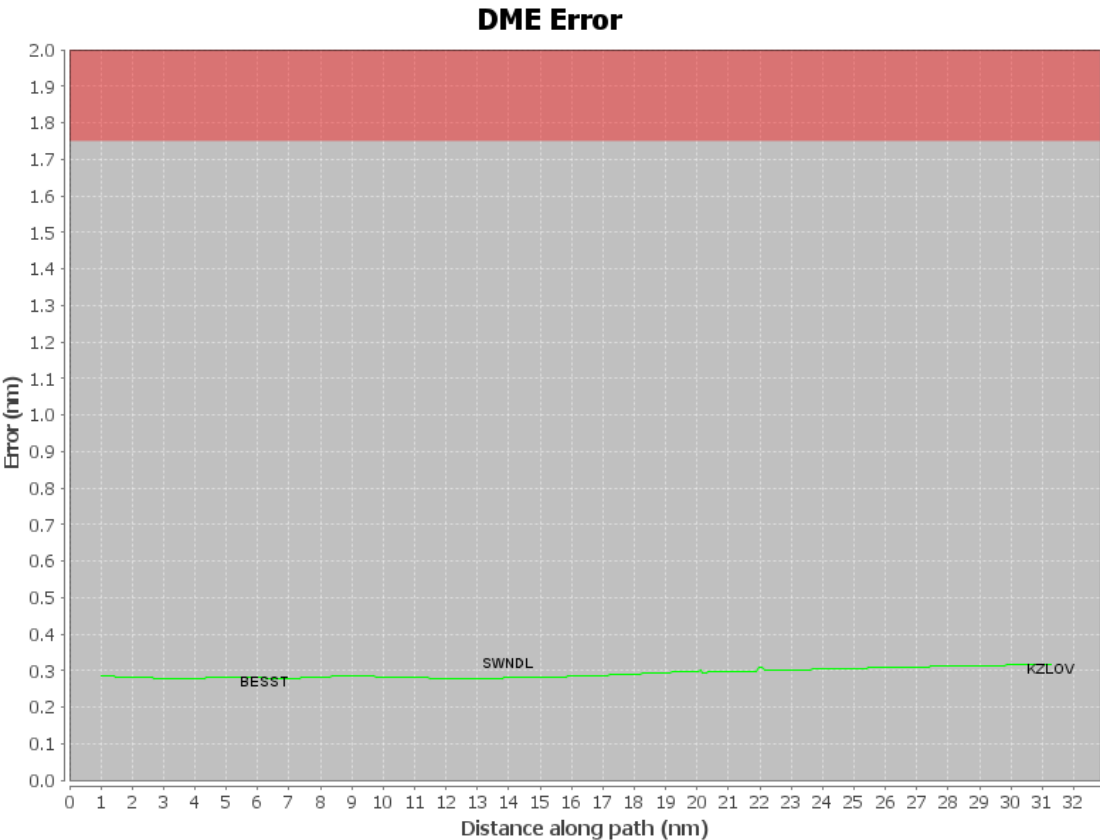
DME DME Assessment Results for KZLOV1 path KDTW:RW03L:DER_KZLOV

User Data Files

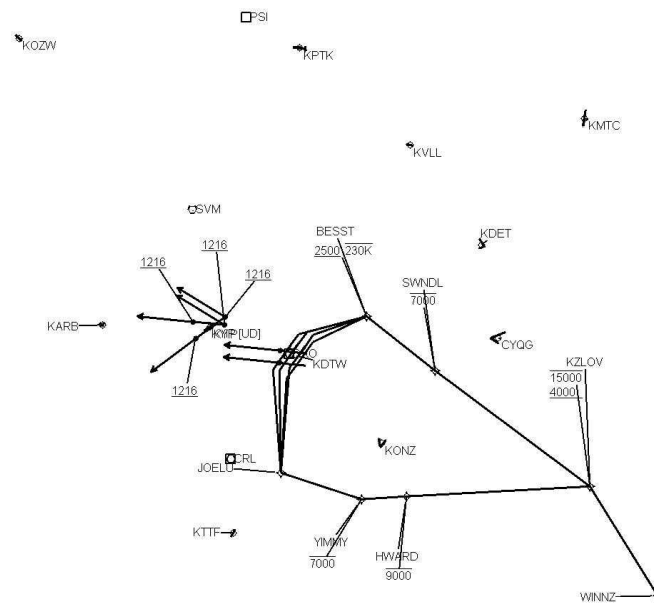
#	File Name
1	UserDMEsKDTW [IFPA] KZLOV1 SID_20210420_1120 CDT.udt

User DMEs

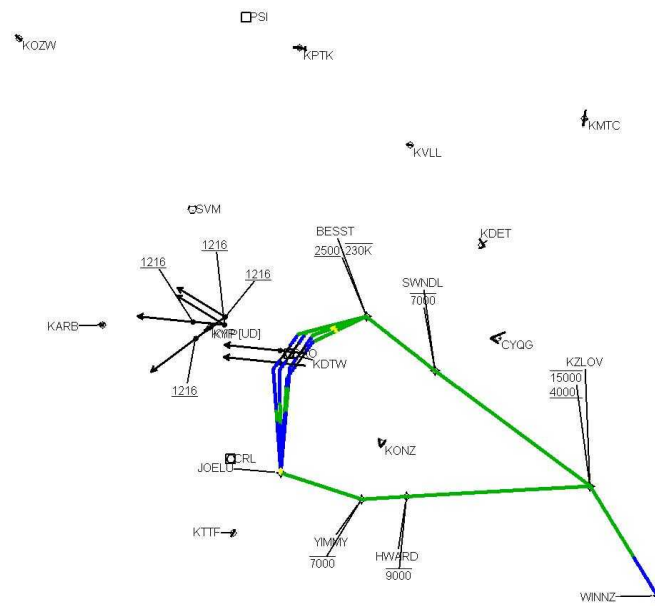
#	Name	Lat/Lon	MAGVAR	Range	Elevation [ft]	Frequency	Replaces	Status
1	DJB FAA 704144-021 DJB [IFPA]	N41° 21' 29.03", W082° 09' 43.09"	5.0 W	130	780	113.6	DJB FAA 704144-021	
ESV:		Bearing [True]: 313.0° to 359.0° Bearing [Mag]: 318.0° to 4.0°				Arc Distance: Out to 60.0 NM Altitude: 4000.0 to 16000.0 ft		
2	JXN FAA 701964 - 016 JXN [IFPA]	N42° 15' 33.26", W084° 27' 30.78"	5.0 W	40	994	null	JXN FAA 701964 - 016	
ESV:		Bearing [True]: 100.0° to 111.0° Bearing [Mag]: 105.0° to 116.0°				Arc Distance: Out to 61.0 NM Altitude: 3900.0 to 9000.0 ft		
3	PSI FAA 694088-006 PSI [IFPA]	N42° 42' 03.09", W083° 31' 57.98"	0.0 E	40	1149.3	null	PSI FAA 694088-006	
ESV:		Bearing [True]: 80.0° to 145.0° Bearing [Mag]: 80.0° to 145.0°				Arc Distance: Out to 65.0 NM Altitude: 3900.0 to 11000.0 ft		



Graphic Depiction 1



Graphic Depiction 2



DME DME Assessment Results for KZLOV1 path KDTW:RW03R:DER_BESST

Results Summary

Flyability:	Completed
DME/DME:	Completed - No Critical DMEs
Name:	Robert CTR Ellis
Project File:	C:\Users\Robert CTR Ellis\Documents\Project Files\DTW\KDTW KZLOV ONE (RNAV) SID 20210722\KDTW KZLOV ONE (RNAV) SID DME ELLIS 20210721.tgs
Output File:	C:\Users\Robert CTR Ellis\Documents\Project Files\DTW\KDTW KZLOV ONE (RNAV) SID 20210722\KDTW [IFPA] KZLOV1 20210722_1042 CDT\KDTW-RW03R-DER_BESST\KDTW KZLOV1 SID KDTW RW03R BESST 20210722_1042 CDT.pdf
Procedure Name:	KZLOV1
Software: DmeDmePlugin:	6.3.0
Date/Time:	07/22/2021 10:42 CDT
Databases:	DTED Level 0 MAX

Failures

No Failures

Warnings

No Warnings

Notes For Flight Check

None

Flight Plan

Name	Type	Lat/Lon	Altitude (ft)	VNAV Mode	Ground Speed (kts)	Turn Type	Leg Type
KDTW:RW03R:DER	WP	N42° 13' 10.86", W083° 20' 02.65"	631.8	VNAV	130	FLY_BY	TF
BESST	WP	N42° 16' 56.69", W083° 13' 21.04"	2500	VNAV	230	FLY_BY	TF
Climb Gradient: 500.0 ft/NM up to 1146.0 ft MSL							

Flyability

Flight Type:	SID
Selected Airport:	KDTW [IFPA]
Climb Gradient:	500.0 ft/NM up to 1146.0 ft MSL
Speeds:	130 at the Runway DER
	145 at the end of the VA or VI leg
	200 Ground Speed to 11000 FT
	240 Ground Speed to 18000 FT
	260 Ground Speed to 24000 FT
	340 Ground Speed above 24000 FT
Descent During a Turn:	Allowed
VNAV Mode:	Flight Plan

DME DME Assessment Results for KZLOV1 path KDTW:RW03R:DER_BESST

DME/DME	
RNP:	RNP 2
Flight Mode:	Manual
Line of Sight (DTED Level 0 Max):	Evaluated
Inertial Drift:	Enabled
Initial Drift:	0.558 NM
INS Drift Rate:	8.0 NM/Hour
Range Mode:	OSV
RNP Edges:	Evaluated
Min DME Range:	3.0 NM
DME Types:	DME, VOR-DME, VORTAC
DME Include Angles:	30 to 150
Critical DMEs:	Allowed
DoD Facilities:	Not included
Foreign Facilities:	Not included
High DMEs:	Included
Low DMEs:	Included
Terminal DMEs:	Included
Flight Check DMEs:	Not selected
Higher Altitudes:	Not Evaluated
Near Maximum Altitude:	Not Evaluated
Automatic ESVs:	Not enabled
Disabled DMEs:	None

DME/DME (Continued)										
DMEs Used										
#	Name	Lat/Lon	MAGVAR	Range	Type	Source	Critical	Status	Time	Distance
1	PSI	N42° 42' 03.09", W083° 31' 57.98"	0.0 E	40	L	IFPA	NO	Enabled	39.8 %	47.3 %
2	DXO	N42° 12' 47.29", W083° 21' 59.99"	6.0 W	130	H	IFPA	NO	Enabled	39.8 %	47.3 %
3	CRL	N42° 02' 52.90", W083° 27' 27.26"	3.0 W	130	H	IFPA	NO	Enabled	80 %	83.8 %
4	SVM	N42° 24' 31.11", W083° 35' 38.05"	3.0 W	40	L	IFPA	NO	Enabled	80 %	83.8 %

Flight Check DME Selection						
Distance [NM]	Selected DMEs					Alternate
0.0						
1.0	CRL	SVM				
3.3	CRL	SVM	PSI	DXO		

Inertial Drift Segments			
#	Start Location	End Location	Length [NM]
1	N42° 13' 12.72", W083° 20' 01.28"	N42° 14' 04.99", W083° 19' 22.74"	0.9929

Available DMEs by Waypoints		
Waypoint Before	Waypoint After	DME List
KDTW:RW03R:DER	BESST	PSI, DXO, SVM, CRL

DME DME Assessment Results for KZLOV1 path KDTW:RW03R:DER_BESST

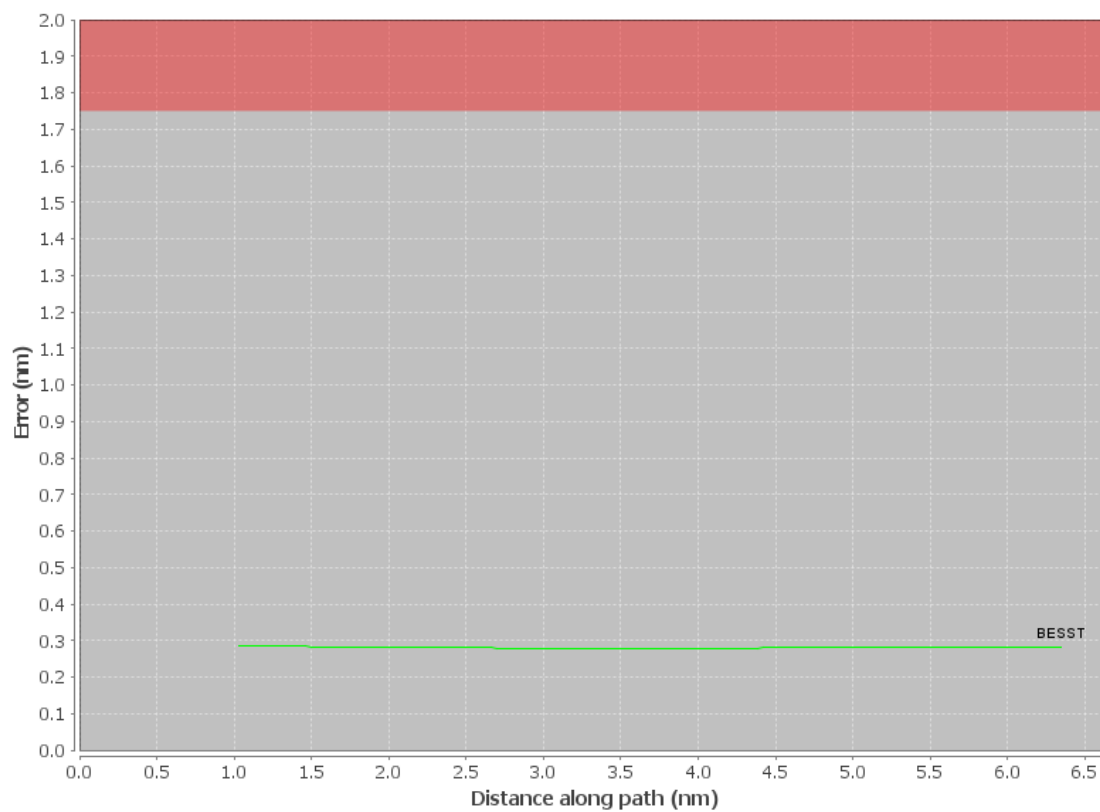
User Data Files

#	File Name
1	UserDMEsKDTW [IFPA] KZLOV1 SID_20210420_1120 CDT.udt

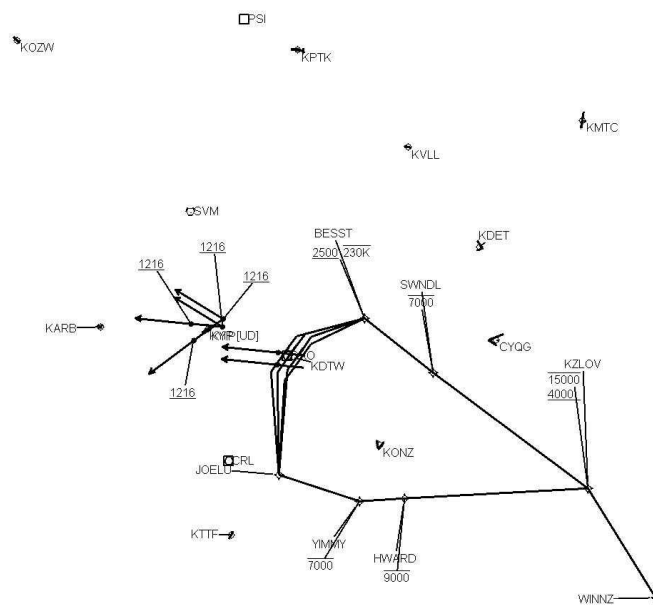
User DMEs

#	Name	Lat/Lon	MAGVAR	Range	Elevation [ft]	Frequency	Replaces	Status
1	DJB FAA 704144-021 DJB [IFPA]	N41° 21' 29.03", W082° 09' 43.09"	5.0 W	130	780	113.6	DJB FAA 704144-021	
ESV:		Bearing [True]: 313.0° to 359.0° Bearing [Mag]: 318.0° to 4.0°				Arc Distance: Out to 60.0 NM Altitude: 4000.0 to 16000.0 ft		
2	JXN FAA 701964 - 016 JXN [IFPA]	N42° 15' 33.26", W084° 27' 30.78"	5.0 W	40	994	null	JXN FAA 701964 - 016	
ESV:		Bearing [True]: 100.0° to 111.0° Bearing [Mag]: 105.0° to 116.0°				Arc Distance: Out to 61.0 NM Altitude: 3900.0 to 9000.0 ft		
3	PSI FAA 694088-006 PSI [IFPA]	N42° 42' 03.09", W083° 31' 57.98"	0.0 E	40	1149.3	null	PSI FAA 694088-006	
ESV:		Bearing [True]: 80.0° to 145.0° Bearing [Mag]: 80.0° to 145.0°				Arc Distance: Out to 65.0 NM Altitude: 3900.0 to 11000.0 ft		

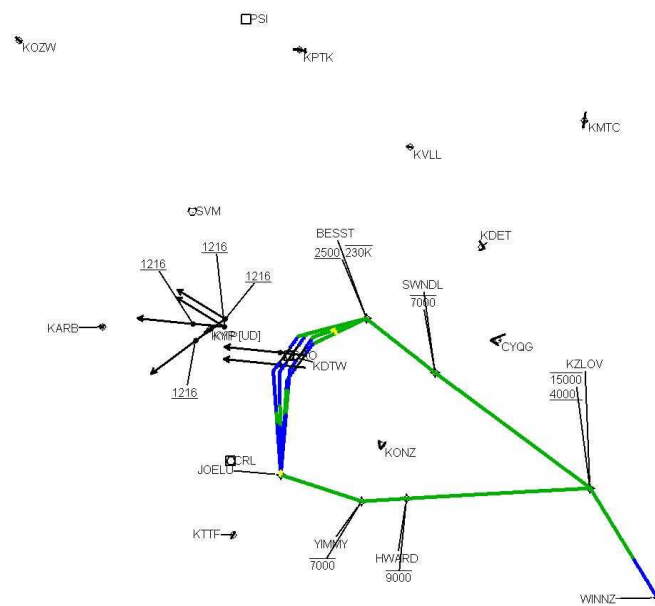
DME Error



Graphic Depiction 1



Graphic Depiction 2



DME DME Assessment Results for KZLOV1 path KDTW:RW04L:DER_BESST

Results Summary

Flyability:	Completed
DME/DME:	Completed - No Critical DMEs
Name:	Robert CTR Ellis
Project File:	C:\Users\Robert CTR Ellis\Documents\Project Files\DTW\KDTW KZLOV ONE (RNAV) SID 20210722\KDTW KZLOV ONE (RNAV) SID DME ELLIS 20210721.tgs
Output File:	C:\Users\Robert CTR Ellis\Documents\Project Files\DTW\KDTW KZLOV ONE (RNAV) SID 20210722\KDTW [IFPA] KZLOV1 20210722_1042 CDT\KDTW-RW04L-DER_BESST\KDTW KZLOV1 SID KDTW RW04L BESST 20210722_1042 CDT.pdf
Procedure Name:	KZLOV1
Software: DmeDmePlugin:	6.3.0
Date/Time:	07/22/2021 10:42 CDT
Databases:	DTED Level 0 MAX

Failures

No Failures

Warnings

No Warnings

Notes For Flight Check

None

Flight Plan

Name	Type	Lat/Lon	Altitude (ft)	VNAV Mode	Ground Speed (kts)	Turn Type	Leg Type
KDTW:RW04L:DER	WP	N42° 13' 34.48", W083° 21' 58.61"	642.1	VNAV	130	FLY_BY	TF
BESST	WP	N42° 16' 56.69", W083° 13' 21.04"	2500	VNAV	230	FLY_BY	TF
Climb Gradient: 500.0 ft/NM up to 1146.0 ft MSL							

Flyability

Flight Type:	SID
Selected Airport:	KDTW [IFPA]
Climb Gradient:	500.0 ft/NM up to 1146.0 ft MSL
Speeds:	130 at the Runway DER
	145 at the end of the VA or VI leg
	200 Ground Speed to 11000 FT
	240 Ground Speed to 18000 FT
	260 Ground Speed to 24000 FT
	340 Ground Speed above 24000 FT
Descent During a Turn:	Allowed
VNAV Mode:	Flight Plan

DME DME Assessment Results for KZLOV1 path KDTW:RW04L:DER_BESST

DME/DME	
RNP:	RNP 2
Flight Mode:	Manual
Line of Sight (DTED Level 0 Max):	Evaluated
Inertial Drift:	Enabled
Initial Drift:	0.558 NM
INS Drift Rate:	8.0 NM/Hour
Range Mode:	OSV
RNP Edges:	Evaluated
Min DME Range:	3.0 NM
DME Types:	DME, VOR-DME, VORTAC
DME Include Angles:	30 to 150
Critical DMEs:	Allowed
DoD Facilities:	Not included
Foreign Facilities:	Not included
High DMEs:	Included
Low DMEs:	Included
Terminal DMEs:	Included
Flight Check DMEs:	Not selected
Higher Altitudes:	Not Evaluated
Near Maximum Altitude:	Not Evaluated
Automatic ESVs:	Not enabled
Disabled DMEs:	None

DME/DME (Continued)										
DMEs Used										
#	Name	Lat/Lon	MAGVAR	Range	Type	Source	Critical	Status	Time	Distance
1	PSI	N42° 42' 03.09", W083° 31' 57.98"	0.0 E	40	L	IFPA	NO	Enabled	41.1 %	48.2 %
2	DXO	N42° 12' 47.29", W083° 21' 59.99"	6.0 W	130	H	IFPA	NO	Enabled	41.1 %	48.2 %
3	CRL	N42° 02' 52.90", W083° 27' 27.26"	3.0 W	130	H	IFPA	NO	Enabled	84.3 %	87 %
4	SVM	N42° 24' 31.11", W083° 35' 38.05"	3.0 W	40	L	IFPA	NO	Enabled	84.3 %	87 %

Flight Check DME Selection						
Distance [NM]	Selected DMEs					Alternate
0.0						
1.0	CRL	SVM				
3.9	CRL	SVM	PSI	DXO		

Inertial Drift Segments			
#	Start Location	End Location	Length [NM]
1	N42° 13' 36.38", W083° 21' 57.22"	N42° 14' 25.65", W083° 21' 20.92"	0.9358

Available DMEs by Waypoints		
Waypoint Before	Waypoint After	DME List
KDTW:RW04L:DER	BESST	PSI, DXO, SVM, CRL

DME DME Assessment Results for KZLOV1 path KDTW:RW04L:DER_BESST

User Data Files

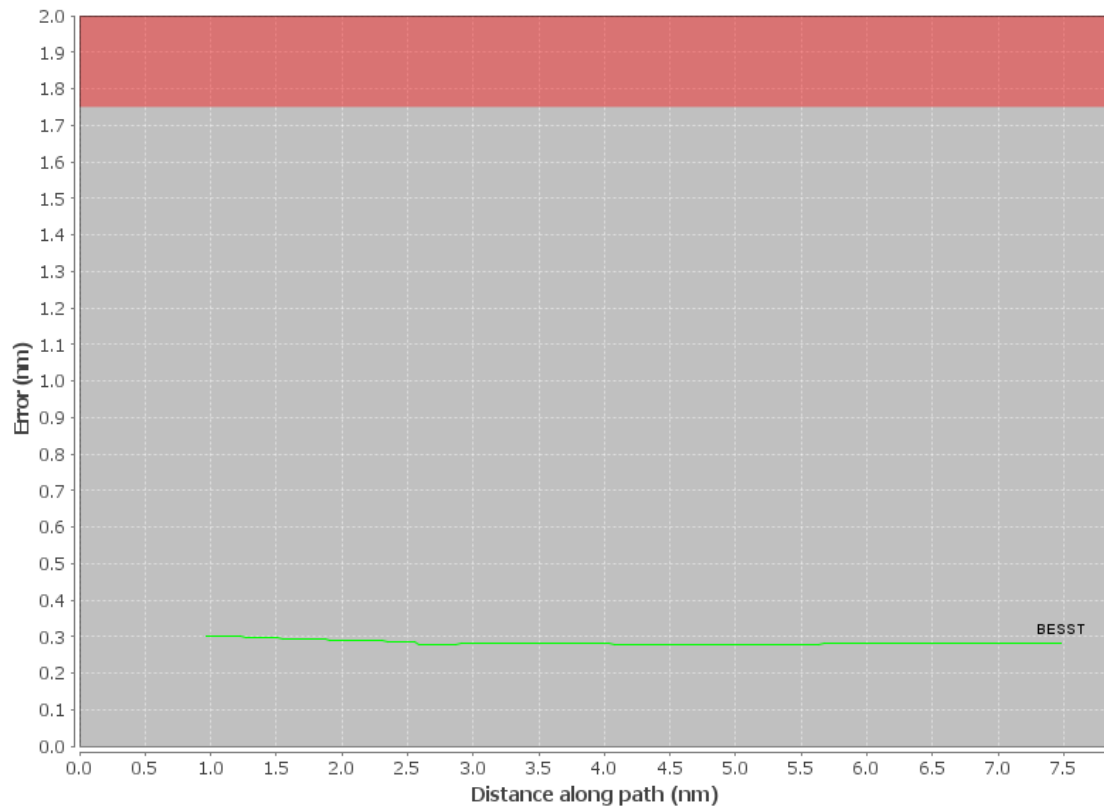
#	File Name
1	UserDMEsKDTW [IFPA] KZLOV1 SID_20210420_1120 CDT.udt

User DMEs

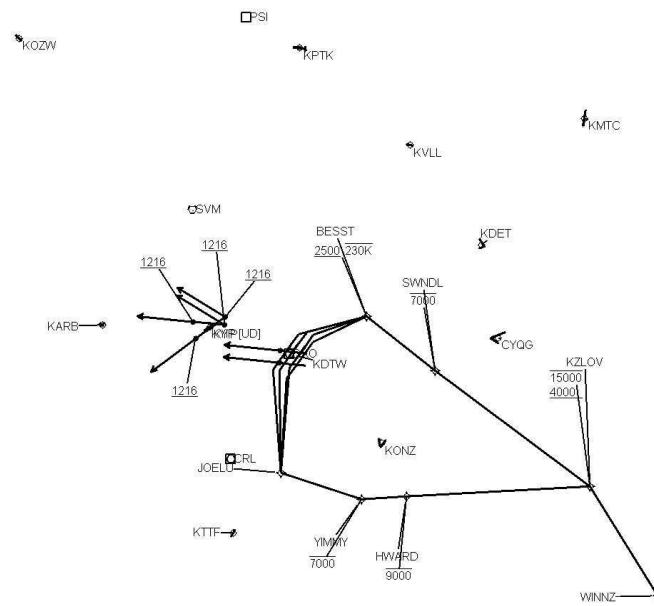
#	Name	Lat/Lon	MAGVAR	Range	Elevation [ft]	Frequency	Replaces	Status
1	DJB FAA 704144-021 DJB [IFPA]	N41° 21' 29.03", W082° 09' 43.09"	5.0 W	130	780	113.6	DJB FAA 704144-021	
ESV:		Bearing [True]: 313.0° to 359.0° Bearing [Mag]: 318.0° to 4.0°				Arc Distance: Out to 60.0 NM Altitude: 4000.0 to 16000.0 ft		
2	JXN FAA 701964 - 016 JXN [IFPA]	N42° 15' 33.26", W084° 27' 30.78"	5.0 W	40	994	null	JXN FAA 701964 - 016	
ESV:		Bearing [True]: 100.0° to 111.0° Bearing [Mag]: 105.0° to 116.0°				Arc Distance: Out to 61.0 NM Altitude: 3900.0 to 9000.0 ft		
3	PSI FAA 694088-006 PSI [IFPA]	N42° 42' 03.09", W083° 31' 57.98"	0.0 E	40	1149.3	null	PSI FAA 694088-006	
ESV:		Bearing [True]: 80.0° to 145.0° Bearing [Mag]: 80.0° to 145.0°				Arc Distance: Out to 65.0 NM Altitude: 3900.0 to 11000.0 ft		

DME DME Assessment Results for KZLOV1 path KDTW:RW04L:DER_BESST

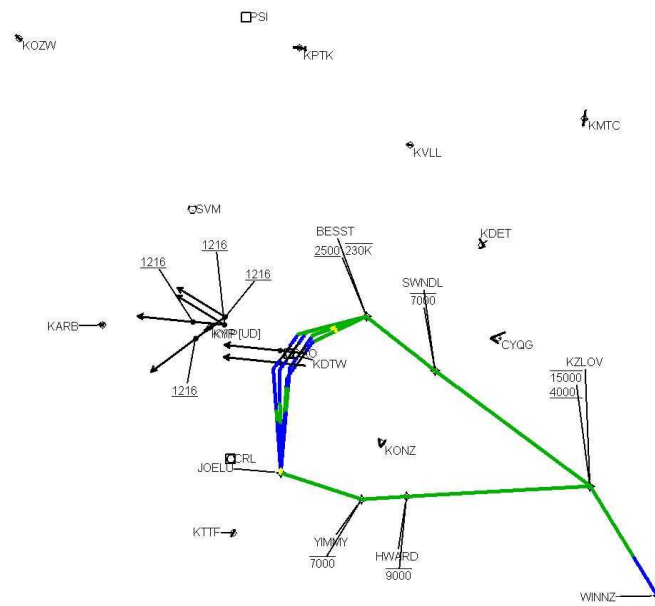
DME Error



Graphic Depiction 1



Graphic Depiction 2



DME DME Assessment Results for KZLOV1 path KDTW:RW04R:DER_BESST

Results Summary

Flyability:	Completed
DME/DME:	Completed - No Critical DMEs
Name:	Robert CTR Ellis
Project File:	C:\Users\Robert CTR Ellis\Documents\Project Files\DTW\KDTW KZLOV ONE (RNAV) SID 20210722\KDTW KZLOV ONE (RNAV) SID DME ELLIS 20210721.tgs
Output File:	C:\Users\Robert CTR Ellis\Documents\Project Files\DTW\KDTW KZLOV ONE (RNAV) SID 20210722\KDTW [IFPA] KZLOV1 20210722_1042 CDT\KDTW-RW04R-DER_BESST\KDTW KZLOV1 SID KDTW RW04R BESST 20210722_1042 CDT.pdf
Procedure Name:	KZLOV1
Software: DmeDmePlugin:	6.3.0
Date/Time:	07/22/2021 10:42 CDT
Databases:	DTED Level 0 MAX

Failures

No Failures

Warnings

No Warnings

Notes For Flight Check

None

Flight Plan

Name	Type	Lat/Lon	Altitude (ft)	VNAV Mode	Ground Speed (kts)	Turn Type	Leg Type
KDTW:RW04R:DER	WP	N42° 13' 52.36", W083° 20' 59.97"	635.8	VNAV	130	FLY_BY	TF
BESST	WP	N42° 16' 56.69", W083° 13' 21.04"	2500	VNAV	230	FLY_BY	TF
Climb Gradient: 500.0 ft/NM up to 1146.0 ft MSL							

Flyability

Flight Type:	SID
Selected Airport:	KDTW [IFPA]
Climb Gradient:	500.0 ft/NM up to 1146.0 ft MSL
Speeds:	130 at the Runway DER
	145 at the end of the VA or VI leg
	200 Ground Speed to 11000 FT
	240 Ground Speed to 18000 FT
	260 Ground Speed to 24000 FT
	340 Ground Speed above 24000 FT
Descent During a Turn:	Allowed
VNAV Mode:	Flight Plan

DME DME Assessment Results for KZLOV1 path KDTW:RW04R:DER_BESST

DME/DME	
RNP:	RNP 2
Flight Mode:	Manual
Line of Sight (DTED Level 0 Max):	Evaluated
Inertial Drift:	Enabled
Initial Drift:	0.558 NM
INS Drift Rate:	8.0 NM/Hour
Range Mode:	OSV
RNP Edges:	Evaluated
Min DME Range:	3.0 NM
DME Types:	DME, VOR-DME, VORTAC
DME Include Angles:	30 to 150
Critical DMEs:	Allowed
DoD Facilities:	Not included
Foreign Facilities:	Not included
High DMEs:	Included
Low DMEs:	Included
Terminal DMEs:	Included
Flight Check DMEs:	Not selected
Higher Altitudes:	Not Evaluated
Near Maximum Altitude:	Not Evaluated
Automatic ESVs:	Not enabled
Disabled DMEs:	None

DME/DME (Continued)										
DMEs Used										
#	Name	Lat/Lon	MAGVAR	Range	Type	Source	Critical	Status	Time	Distance
1	PSI	N42° 42' 03.09", W083° 31' 57.98"	0.0 E	40	L	IFPA	NO	Enabled	39.8 %	47.3 %
2	DXO	N42° 12' 47.29", W083° 21' 59.99"	6.0 W	130	H	IFPA	NO	Enabled	45.3 %	52.7 %
3	CRL	N42° 02' 52.90", W083° 27' 27.26"	3.0 W	130	H	IFPA	NO	Enabled	82 %	85.3 %
4	SVM	N42° 24' 31.11", W083° 35' 38.05"	3.0 W	40	L	IFPA	NO	Enabled	82 %	85.3 %

Flight Check DME Selection						
Distance [NM]	Selected DMEs					Alternate
0.0						
1.0	CRL	SVM				
3.2	CRL	SVM	DXO			
3.5	CRL	SVM	DXO	PSI		

Inertial Drift Segments			
#	Start Location	End Location	Length [NM]
1	N42° 13' 54.22", W083° 20' 58.60"	N42° 14' 44.23", W083° 20' 21.73"	0.95

Available DMEs by Waypoints		
Waypoint Before	Waypoint After	DME List
KDTW:RW04R:DER	BESST	PSI, DXO, SVM, CRL

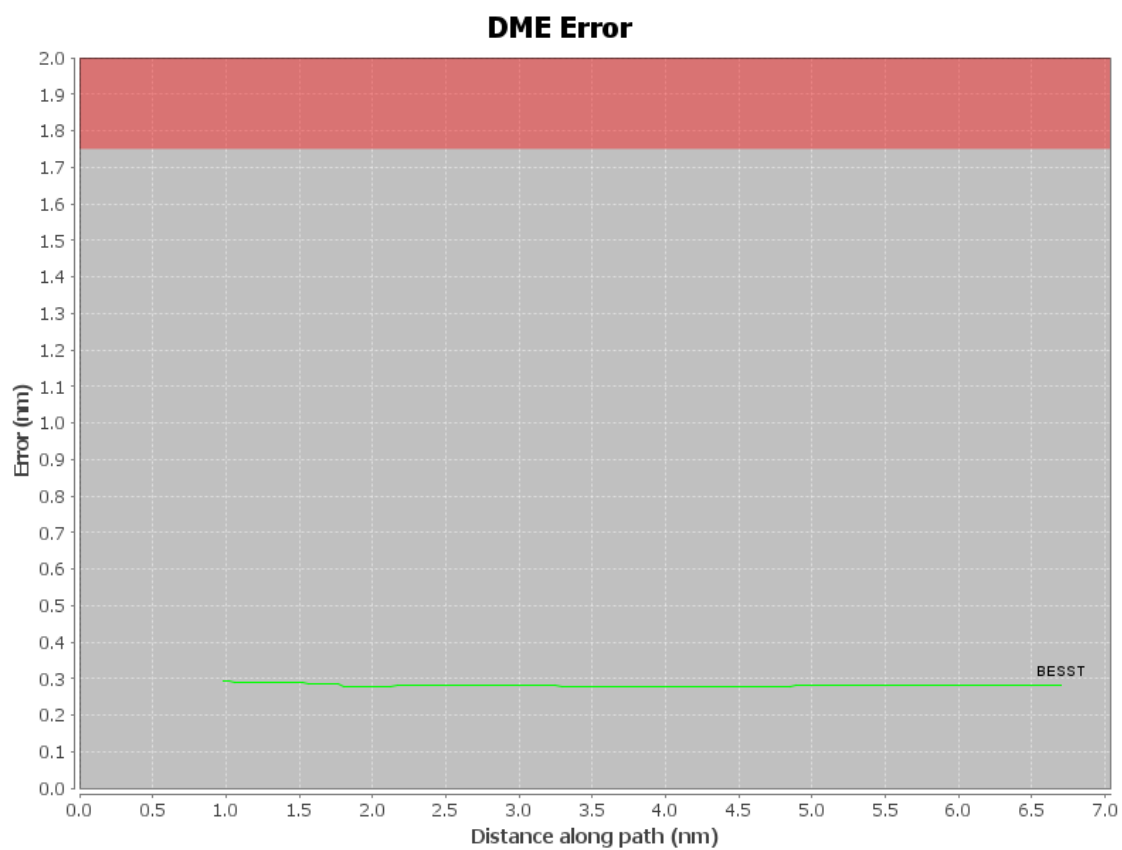
DME DME Assessment Results for KZLOV1 path KDTW:RW04R:DER_BESST

User Data Files

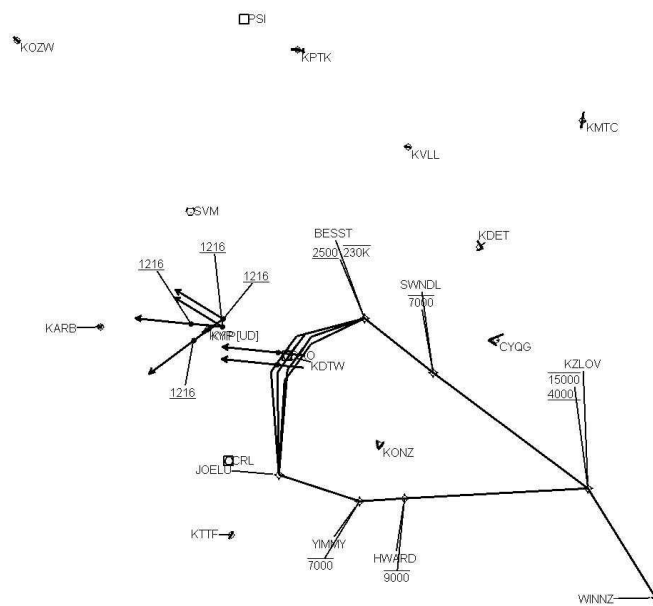
#	File Name
1	UserDMEsKDTW [IFPA] KZLOV1 SID_20210420_1120 CDT.udt

User DMEs

#	Name	Lat/Lon	MAGVAR	Range	Elevation [ft]	Frequency	Replaces	Status
1	DJB FAA 704144-021 DJB [IFPA]	N41° 21' 29.03", W082° 09' 43.09"	5.0 W	130	780	113.6	DJB FAA 704144-021	
ESV:		Bearing [True]: 313.0° to 359.0° Bearing [Mag]: 318.0° to 4.0°				Arc Distance: Out to 60.0 NM Altitude: 4000.0 to 16000.0 ft		
2	JXN FAA 701964 - 016 JXN [IFPA]	N42° 15' 33.26", W084° 27' 30.78"	5.0 W	40	994	null	JXN FAA 701964 - 016	
ESV:		Bearing [True]: 100.0° to 111.0° Bearing [Mag]: 105.0° to 116.0°				Arc Distance: Out to 61.0 NM Altitude: 3900.0 to 9000.0 ft		
3	PSI FAA 694088-006 PSI [IFPA]	N42° 42' 03.09", W083° 31' 57.98"	0.0 E	40	1149.3	null	PSI FAA 694088-006	
ESV:		Bearing [True]: 80.0° to 145.0° Bearing [Mag]: 80.0° to 145.0°				Arc Distance: Out to 65.0 NM Altitude: 3900.0 to 11000.0 ft		

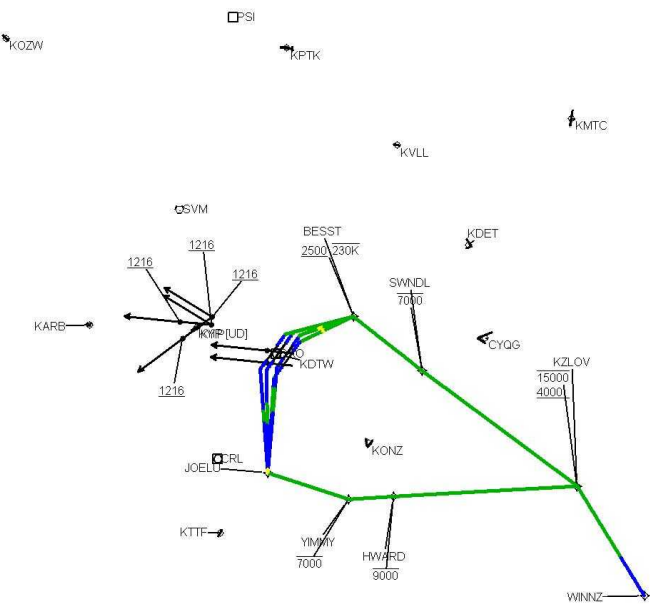


Graphic Depiction 1



DME DME Assessment Results for KZLOV1 path KDTW:RW04R:DER_BESST

Graphic Depiction 2



DME DME Assessment Results for KZLOV1 path KDTW:RW21L:DER_WINNZ

Results Summary

Flyability:	Completed
DME/DME:	Completed - No Critical DMEs
Name:	Robert CTR Ellis
Project File:	C:\Users\Robert CTR Ellis\Documents\Project Files\DTW\KDTW KZLOV ONE (RNAV) SID 20210722\KDTW KZLOV ONE (RNAV) SID DME ELLIS 20210721.tgs
Output File:	C:\Users\Robert CTR Ellis\Documents\Project Files\DTW\KDTW KZLOV ONE (RNAV) SID 20210722\KDTW [IFPA] KZLOV1 20210722_1042 CDT\KDTW-RW21L-DER_WINNZ\KDTW KZLOV1 SID KDTW RW21L WINNZ 20210722_1042 CDT.pdf
Procedure Name:	KZLOV1
Software: DmeDmePlugin:	6.3.0
Date/Time:	07/22/2021 10:42 CDT
Databases:	DTED Level 0 MAX

Failures

No Failures

Warnings

No Warnings

Notes For Flight Check

None

Flight Plan

Name	Type	Lat/Lon	Altitude (ft)	VNAV Mode	Ground Speed (kts)	Turn Type	Leg Type
KDTW:RW21L:DER	WP	N42° 11' 44.21", W083° 21' 06.49"	632.8	VNAV	130	FLY_BY	TF
JOELU	WP	N42° 02' 13.33", W083° 21' 16.60"	4000	VNAV	200	FLY_BY	TF
YIMMY	WP	N42° 00' 46.57", W083° 11' 14.47"	4000	VNAV	200	FLY_BY	TF
HWARD	WP	N42° 01' 30.79", W083° 05' 53.79"	4000	VNAV	200	FLY_BY	TF
KZLOV	WP	N42° 04' 24.81", W082° 44' 07.44"	4000	VNAV	230	FLY_BY	TF
WINNZ	WP	N41° 55' 26.66", W082° 34' 29.63"	4000	VNAV	230	FLY_BY	TF
Climb Gradient: 500.0 ft/NM up to 1146.0 ft MSL							

Flyability

Flight Type:	SID
Selected Airport:	KDTW [IFPA]
Climb Gradient:	500.0 ft/NM up to 1146.0 ft MSL
Speeds:	130 at the Runway DER
	145 at the end of the VA or VI leg
	200 Ground Speed to 11000 FT
	240 Ground Speed to 18000 FT
	260 Ground Speed to 24000 FT
	340 Ground Speed above 24000 FT
Descent During a Turn:	Allowed
VNAV Mode:	Flight Plan

DME DME Assessment Results for KZLOV1 path KDTW:RW21L:DER_WINNZ

DME/DME	
RNP:	RNP 2
Flight Mode:	Manual
Line of Sight (DTED Level 0 Max):	Evaluated
Inertial Drift:	Enabled
Initial Drift:	0.558 NM
INS Drift Rate:	8.0 NM/Hour
Range Mode:	OSV
RNP Edges:	Evaluated
Min DME Range:	3.0 NM
DME Types:	DME, VOR-DME, VORTAC
DME Include Angles:	30 to 150
Critical DMEs:	Allowed
DoD Facilities:	Not included
Foreign Facilities:	Not included
High DMEs:	Included
Low DMEs:	Included
Terminal DMEs:	Included
Flight Check DMEs:	Not selected
Higher Altitudes:	Not Evaluated
Near Maximum Altitude:	Not Evaluated
Automatic ESVs:	Not enabled
Disabled DMEs:	None

DME/DME (Continued)										
DMEs Used										
#	Name	Lat/Lon	MAGVAR	Range	Type	Source	Critical	Status	Time	Distance
1	PSI	N42° 42' 03.09", W083° 31' 57.98"	0.0 E	40	L	IFPA	NO	Enabled	25.4 %	28.4 %
2	DXO	N42° 12' 47.29", W083° 21' 59.99"	6.0 W	130	H	IFPA	NO	Enabled	40.3 %	40.2 %
3	CRL	N42° 02' 52.90", W083° 27' 27.26"	3.0 W	130	H	IFPA	NO	Enabled	75.2 %	77.8 %
4	DJB	N41° 21' 29.03", W082° 09' 43.09"	5.0 W	130	H	IFPA	NO	Enabled	38.9 %	42.3 %
5	JXN	N42° 15' 33.26", W084° 27' 30.78"	5.0 W	40	L	IFPA	NO	Enabled	17 %	17.6 %
6	SVM	N42° 24' 31.11", W083° 35' 38.05"	3.0 W	40	L	IFPA	NO	Enabled	40.3 %	41.4 %

Flight Check DME Selection						
Distance [NM]	Selected DMEs					Alternate
0.0						
1.1	CRL	SVM				
1.3						
2.1	CRL	DXO				
4.5						
9.4	CRL	DXO	JXN	SVM		
18.1	CRL	DXO	SVM			
24.0	CRL	SVM				
24.3	DJB	CRL	SVM			
29.7	DJB	CRL				
31.2	PSI	CRL	DJB			
35.9	DJB	CRL	PSI	DXO		
39.0	DJB	CRL	PSI			
45.3						

DME DME Assessment Results for KZLOV1 path KDTW:RW21L:DER_WINNZ

Inertial Drift Segments

#	Start Location	End Location	Length [NM]
1	N42° 11' 42.35", W083° 21' 07.86"	N42° 10' 48.27", W083° 21' 47.68"	1.0269
2	N42° 10' 36.82", W083° 21' 56.10"	N42° 09' 46.23", W083° 21' 52.12"	0.8443
3	N42° 07' 24.10", W083° 21' 40.96"	N42° 02' 30.19", W083° 21' 17.92"	4.9047
4	N41° 58' 35.11", W082° 37' 51.56"	N41° 55' 26.66", W082° 34' 29.63"	4.0202

Available DMEs by Waypoints

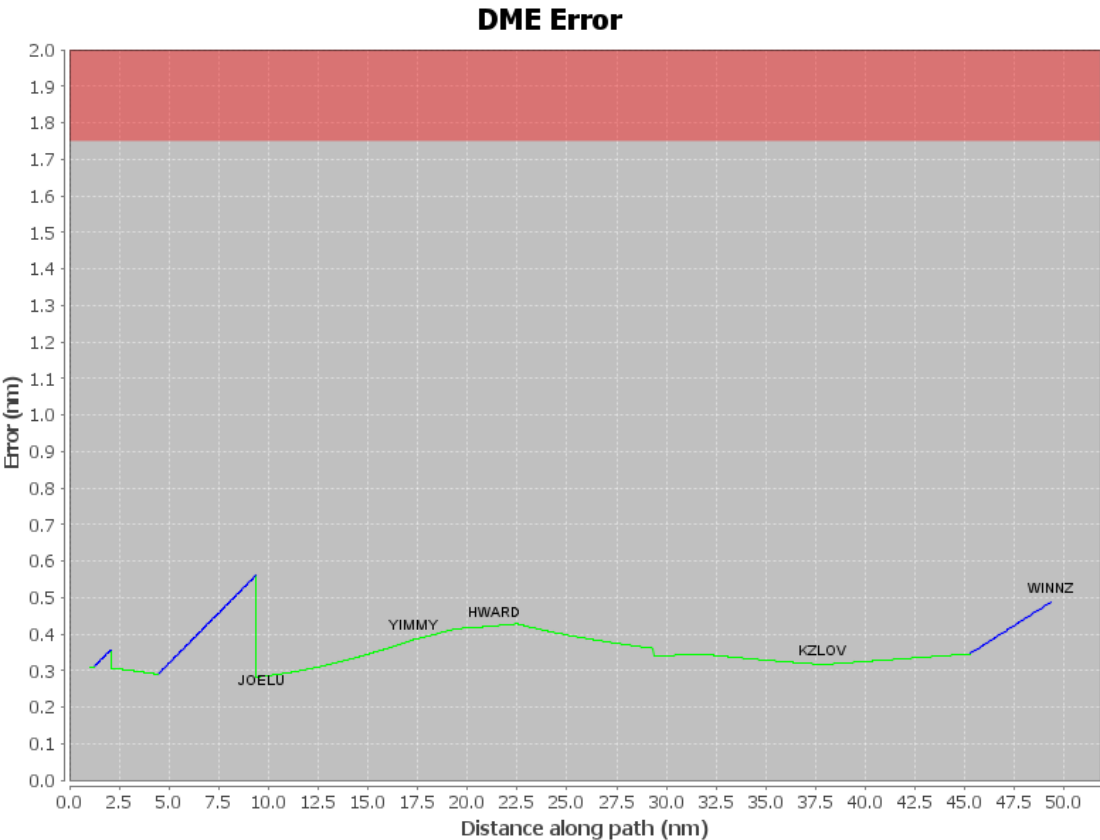
Waypoint Before	Waypoint After	DME List
KDTW:RW21L:DER	JOELU	JXN, DXO, SVM, CRL
JOELU	YIMMY	JXN, DXO, SVM, CRL
YIMMY	HWARD	JXN, DXO, SVM, CRL
HWARD	KZLOV	PSI, DXO, SVM, CRL, DJB
KZLOV	WINNZ	PSI, DXO, CRL, DJB

User Data Files

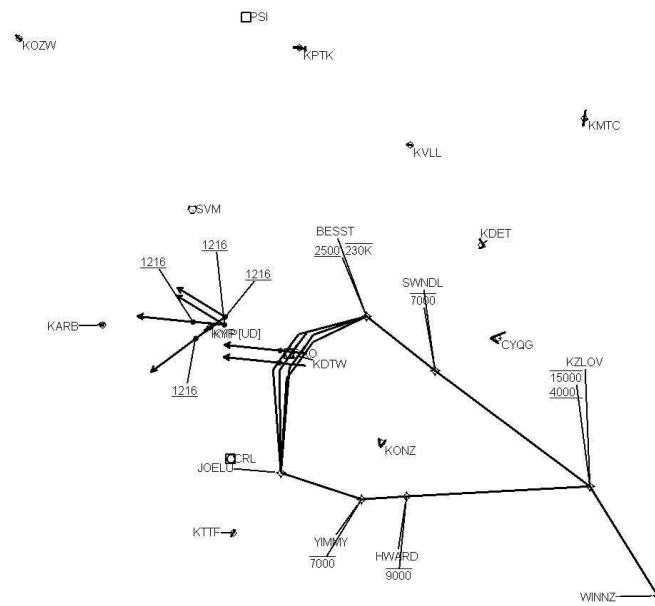
#	File Name
1	UserDMEsKDTW [IFPA] KZLOV1 SID_20210420_1120 CDT.udt

User DMEs

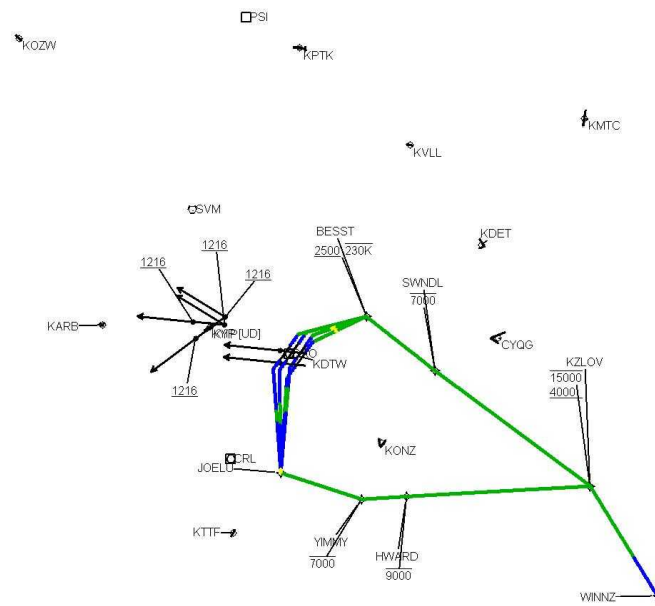
#	Name	Lat/Lon	MAGVAR	Range	Elevation [ft]	Frequency	Replaces	Status
1	DJB FAA 704144-021 DJB [IFPA]	N41° 21' 29.03", W082° 09' 43.09"	5.0 W	130	780	113.6	DJB FAA 704144-021	
ESV:		Bearing [True]: 313.0° to 359.0° Bearing [Mag]: 318.0° to 4.0°				Arc Distance: Out to 60.0 NM Altitude: 4000.0 to 16000.0 ft		
2	JXN FAA 701964 - 016 JXN [IFPA]	N42° 15' 33.26", W084° 27' 30.78"	5.0 W	40	994	null	JXN FAA 701964 - 016	
ESV:		Bearing [True]: 100.0° to 111.0° Bearing [Mag]: 105.0° to 116.0°				Arc Distance: Out to 61.0 NM Altitude: 3900.0 to 9000.0 ft		
3	PSI FAA 694088-006 PSI [IFPA]	N42° 42' 03.09", W083° 31' 57.98"	0.0 E	40	1149.3	null	PSI FAA 694088-006	
ESV:		Bearing [True]: 80.0° to 145.0° Bearing [Mag]: 80.0° to 145.0°				Arc Distance: Out to 65.0 NM Altitude: 3900.0 to 11000.0 ft		



Graphic Depiction 1



Graphic Depiction 2



DME DME Assessment Results for KZLOV1 path KDTW:RW21R:DER_JOELU

Results Summary

Flyability:	Completed
DME/DME:	Completed - No Critical DMEs
Name:	Robert CTR Ellis
Project File:	C:\Users\Robert CTR Ellis\Documents\Project Files\DTW\KDTW KZLOV ONE (RNAV) SID 20210722\KDTW KZLOV ONE (RNAV) SID DME ELLIS 20210721.tgs
Output File:	C:\Users\Robert CTR Ellis\Documents\Project Files\DTW\KDTW KZLOV ONE (RNAV) SID 20210722\KDTW [IFPA] KZLOV1 20210722_1042 CDT\KDTW-RW21R-DER_JOELU\KDTW KZLOV1 SID KDTW RW21R JOELU 20210722_1042 CDT.pdf
Procedure Name:	KZLOV1
Software: DmeDmePlugin:	6.3.0
Date/Time:	07/22/2021 10:42 CDT
Databases:	DTED Level 0 MAX

Failures

No Failures

Warnings

No Warnings

Notes For Flight Check

None

Flight Plan

Name	Type	Lat/Lon	Altitude (ft)	VNAV Mode	Ground Speed (kts)	Turn Type	Leg Type
KDTW:RW21R:DER	WP	N42° 12' 28.21", W083° 21' 04.39"	635.7	VNAV	130	FLY_BY	TF
JOELU	WP	N42° 02' 13.33", W083° 21' 16.60"	4000	VNAV	200	FLY_BY	TF
Climb Gradient: 500.0 ft/NM up to 1146.0 ft MSL							

Flyability

Flight Type:	SID
Selected Airport:	KDTW [IFPA]
Climb Gradient:	500.0 ft/NM up to 1146.0 ft MSL
Speeds:	130 at the Runway DER
	145 at the end of the VA or VI leg
	200 Ground Speed to 11000 FT
	240 Ground Speed to 18000 FT
	260 Ground Speed to 24000 FT
	340 Ground Speed above 24000 FT
Descent During a Turn:	Allowed
VNAV Mode:	Flight Plan

DME DME Assessment Results for KZLOV1 path KDTW:RW21R:DER_JOELU

DME/DME	
RNP:	RNP 2
Flight Mode:	Manual
Line of Sight (DTED Level 0 Max):	Evaluated
Inertial Drift:	Enabled
Initial Drift:	0.558 NM
INS Drift Rate:	8.0 NM/Hour
Range Mode:	OSV
RNP Edges:	Evaluated
Min DME Range:	3.0 NM
DME Types:	DME, VOR-DME, VORTAC
DME Include Angles:	30 to 150
Critical DMEs:	Allowed
DoD Facilities:	Not included
Foreign Facilities:	Not included
High DMEs:	Included
Low DMEs:	Included
Terminal DMEs:	Included
Flight Check DMEs:	Not selected
Higher Altitudes:	Not Evaluated
Near Maximum Altitude:	Not Evaluated
Automatic ESVs:	Not enabled
Disabled DMEs:	None

DME/DME (Continued)										
DMEs Used										
#	Name	Lat/Lon	MAGVAR	Range	Type	Source	Critical	Status	Time	Distance
1	DXO	N42° 12' 47.29", W083° 21' 59.99"	6.0 W	130	H	IFPA	NO	Enabled	23.2 %	23.2 %
2	CRL	N42° 02' 52.90", W083° 27' 27.26"	3.0 W	130	H	IFPA	NO	Enabled	23.2 %	23.2 %
3	JXN	N42° 15' 33.26", W084° 27' 30.78"	5.0 W	40	L	IFPA	NO	Enabled	2.4 %	3.1 %
4	SVM	N42° 24' 31.11", W083° 35' 38.05"	3.0 W	40	L	IFPA	NO	Enabled	2.4 %	3.1 %

Flight Check DME Selection						
Distance [NM]	Selected DMEs					Alternate
0.0						
2.8	CRL	DXO				
5.0						
10.1	CRL	DXO	JXN	SVM		

Inertial Drift Segments			
#	Start Location	End Location	Length [NM]
1	N42° 12' 26.35", W083° 21' 05.75"	N42° 09' 46.10", W083° 21' 38.66"	2.7918
2	N42° 07' 38.46", W083° 21' 32.44"	N42° 02' 32.60", W083° 21' 17.54"	5.099

Available DMEs by Waypoints		
Waypoint Before	Waypoint After	DME List
KDTW:RW21R:DER	JOELU	JXN, DXO, SVM, CRL

DME DME Assessment Results for KZLOV1 path KDTW:RW21R:DER_JOELU

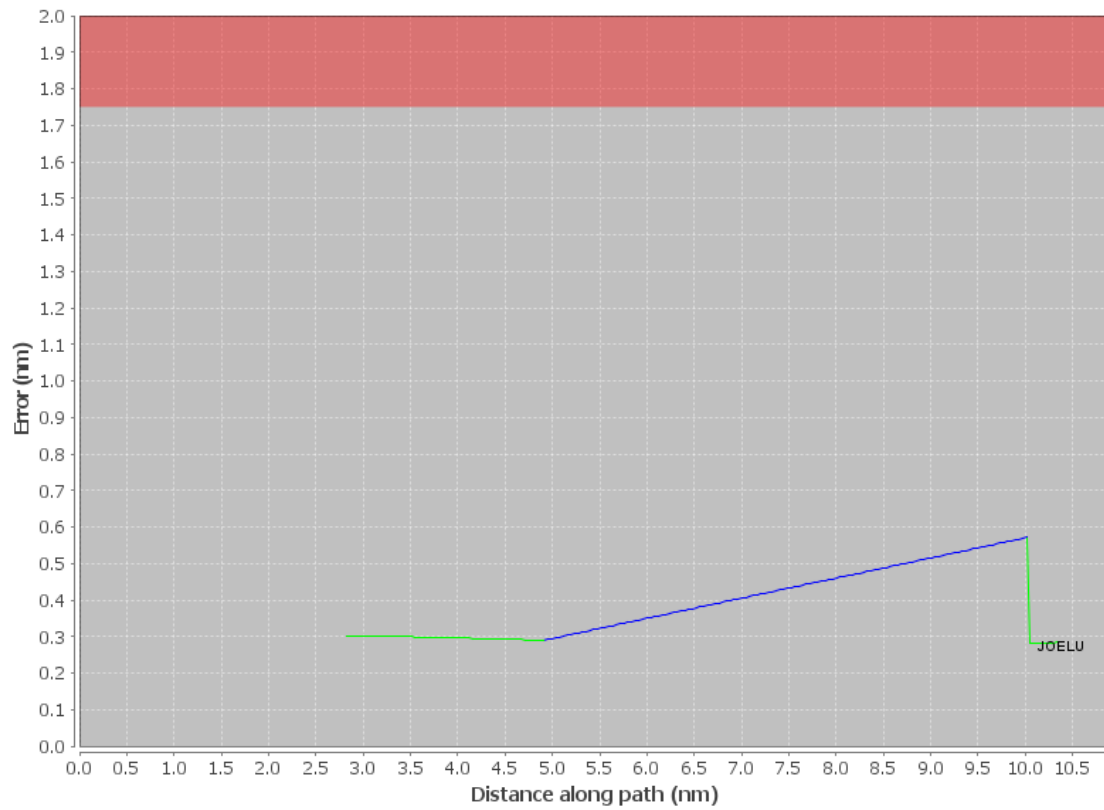
User Data Files

#	File Name
1	UserDMEsKDTW [IFPA] KZLOV1 SID_20210420_1120 CDT.udt

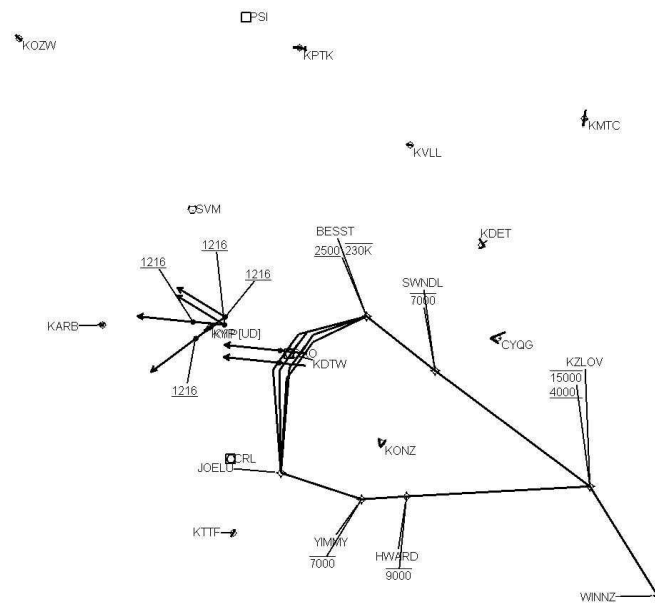
User DMEs

#	Name	Lat/Lon	MAGVAR	Range	Elevation [ft]	Frequency	Replaces	Status
1	DJB FAA 704144-021 DJB [IFPA]	N41° 21' 29.03", W082° 09' 43.09"	5.0 W	130	780	113.6	DJB FAA 704144-021	
ESV:		Bearing [True]: 313.0° to 359.0° Bearing [Mag]: 318.0° to 4.0°				Arc Distance: Out to 60.0 NM Altitude: 4000.0 to 16000.0 ft		
2	JXN FAA 701964 - 016 JXN [IFPA]	N42° 15' 33.26", W084° 27' 30.78"	5.0 W	40	994	null	JXN FAA 701964 - 016	
ESV:		Bearing [True]: 100.0° to 111.0° Bearing [Mag]: 105.0° to 116.0°				Arc Distance: Out to 61.0 NM Altitude: 3900.0 to 9000.0 ft		
3	PSI FAA 694088-006 PSI [IFPA]	N42° 42' 03.09", W083° 31' 57.98"	0.0 E	40	1149.3	null	PSI FAA 694088-006	
ESV:		Bearing [True]: 80.0° to 145.0° Bearing [Mag]: 80.0° to 145.0°				Arc Distance: Out to 65.0 NM Altitude: 3900.0 to 11000.0 ft		

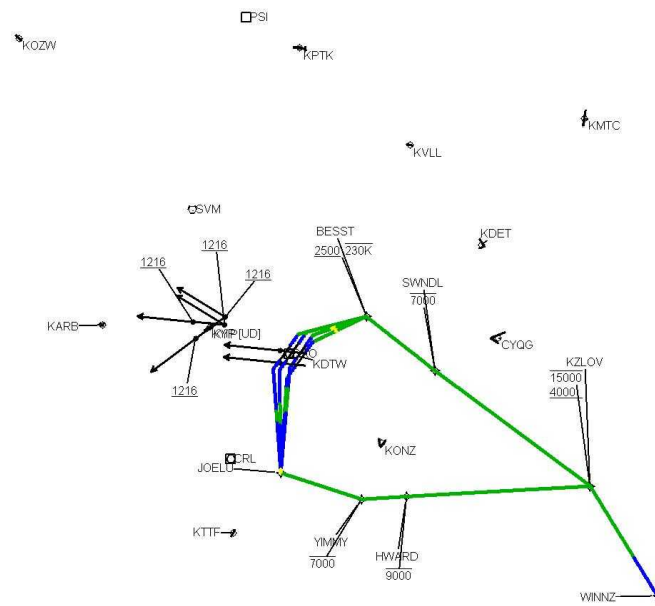
DME Error



Graphic Depiction 1



Graphic Depiction 2



DME DME Assessment Results for KZLOV1 path KDTW:RW22L:DER_JOELU

Results Summary

Flyability:	Completed
DME/DME:	Completed - No Critical DMEs
Name:	Robert CTR Ellis
Project File:	C:\Users\Robert CTR Ellis\Documents\Project Files\DTW\KDTW KZLOV ONE (RNAV) SID 20210722\KDTW KZLOV ONE (RNAV) SID DME ELLIS 20210721.tgs
Output File:	C:\Users\Robert CTR Ellis\Documents\Project Files\DTW\KDTW KZLOV ONE (RNAV) SID 20210722\KDTW [IFPA] KZLOV1 20210722_1042 CDT\KDTW-RW22L-DER_JOELU\KDTW KZLOV1 SID KDTW RW22L JOELU 20210722_1042 CDT.pdf
Procedure Name:	KZLOV1
Software: DmeDmePlugin:	6.3.0
Date/Time:	07/22/2021 10:42 CDT
Databases:	DTED Level 0 MAX

Failures

No Failures

Warnings

No Warnings

Notes For Flight Check

None

Flight Plan

Name	Type	Lat/Lon	Altitude (ft)	VNAV Mode	Ground Speed (kts)	Turn Type	Leg Type
KDTW:RW22L:DER	WP	N42° 12' 08.37", W083° 22' 16.57"	637.5	VNAV	130	FLY_BY	TF
JOELU	WP	N42° 02' 13.33", W083° 21' 16.60"	4000	VNAV	200	FLY_BY	TF
Climb Gradient: 500.0 ft/NM up to 1146.0 ft MSL							

Flyability

Flight Type:	SID
Selected Airport:	KDTW [IFPA]
Climb Gradient:	500.0 ft/NM up to 1146.0 ft MSL
Speeds:	130 at the Runway DER
	145 at the end of the VA or VI leg
	200 Ground Speed to 11000 FT
	240 Ground Speed to 18000 FT
	260 Ground Speed to 24000 FT
	340 Ground Speed above 24000 FT
Descent During a Turn:	Allowed
VNAV Mode:	Flight Plan

DME DME Assessment Results for KZLOV1 path KDTW:RW22L:DER_JOELU

DME/DME	
RNP:	RNP 2
Flight Mode:	Manual
Line of Sight (DTED Level 0 Max):	Evaluated
Inertial Drift:	Enabled
Initial Drift:	0.558 NM
INS Drift Rate:	8.0 NM/Hour
Range Mode:	OSV
RNP Edges:	Evaluated
Min DME Range:	3.0 NM
DME Types:	DME, VOR-DME, VORTAC
DME Include Angles:	30 to 150
Critical DMEs:	Allowed
DoD Facilities:	Not included
Foreign Facilities:	Not included
High DMEs:	Included
Low DMEs:	Included
Terminal DMEs:	Included
Flight Check DMEs:	Not selected
Higher Altitudes:	Not Evaluated
Near Maximum Altitude:	Not Evaluated
Automatic ESVs:	Not enabled
Disabled DMEs:	None

DME/DME (Continued)										
DMEs Used										
#	Name	Lat/Lon	MAGVAR	Range	Type	Source	Critical	Status	Time	Distance
1	DXO	N42° 12' 47.29", W083° 21' 59.99"	6.0 W	130	H	IFPA	NO	Enabled	21 %	21 %
2	CRL	N42° 02' 52.90", W083° 27' 27.26"	3.0 W	130	H	IFPA	NO	Enabled	21 %	21 %
3	JXN	N42° 15' 33.26", W084° 27' 30.78"	5.0 W	40	L	IFPA	NO	Enabled	2.1 %	2.8 %
4	SVM	N42° 24' 31.11", W083° 35' 38.05"	3.0 W	40	L	IFPA	NO	Enabled	2.1 %	2.8 %

Flight Check DME Selection						
Distance [NM]	Selected DMEs					Alternate
0.0						
3.9	CRL	DXO				
5.8						
9.8	CRL	DXO	JXN	SVM		

Inertial Drift Segments			
#	Start Location	End Location	Length [NM]
1	N42° 12' 06.52", W083° 22' 17.93"	N42° 08' 23.04", W083° 22' 24.43"	3.8702
2	N42° 06' 30.93", W083° 22' 03.84"	N42° 02' 30.03", W083° 21' 19.66"	4.0508

Available DMEs by Waypoints		
Waypoint Before	Waypoint After	DME List
KDTW:RW22L:DER	JOELU	JXN, DXO, SVM, CRL

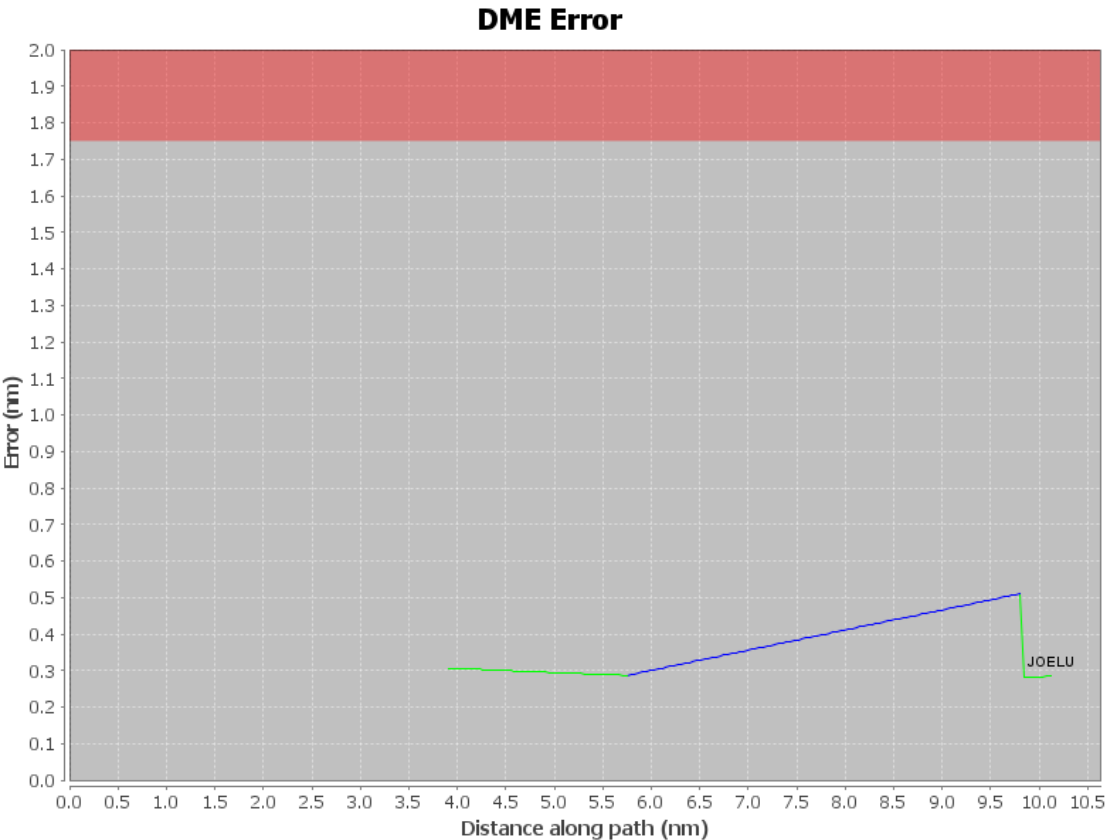
DME DME Assessment Results for KZLOV1 path KDTW:RW22L:DER_JOELU

User Data Files

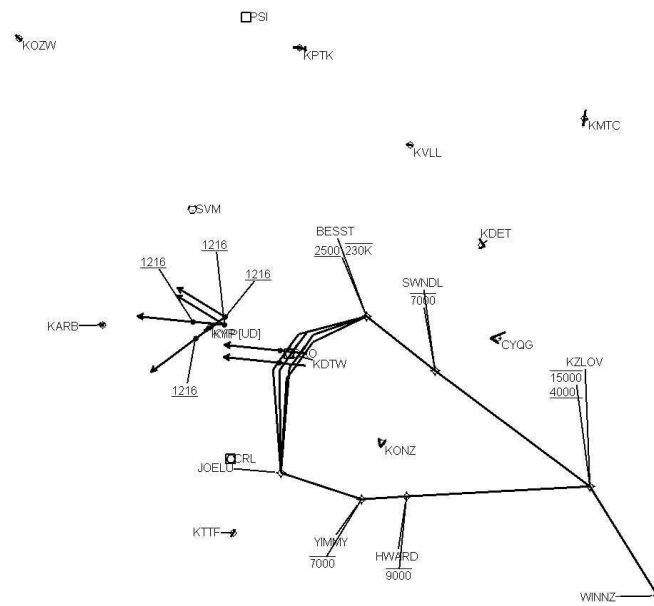
#	File Name
1	UserDMEsKDTW [IFPA] KZLOV1 SID_20210420_1120 CDT.udt

User DMEs

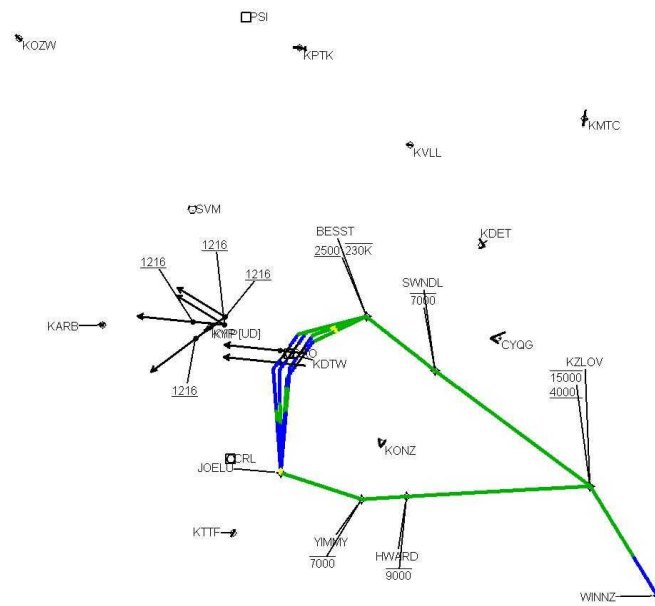
#	Name	Lat/Lon	MAGVAR	Range	Elevation [ft]	Frequency	Replaces	Status
1	DJB FAA 704144-021 DJB [IFPA]	N41° 21' 29.03", W082° 09' 43.09"	5.0 W	130	780	113.6	DJB FAA 704144-021	
ESV:		Bearing [True]: 313.0° to 359.0° Bearing [Mag]: 318.0° to 4.0°				Arc Distance: Out to 60.0 NM Altitude: 4000.0 to 16000.0 ft		
2	JXN FAA 701964 - 016 JXN [IFPA]	N42° 15' 33.26", W084° 27' 30.78"	5.0 W	40	994	null	JXN FAA 701964 - 016	
ESV:		Bearing [True]: 100.0° to 111.0° Bearing [Mag]: 105.0° to 116.0°				Arc Distance: Out to 61.0 NM Altitude: 3900.0 to 9000.0 ft		
3	PSI FAA 694088-006 PSI [IFPA]	N42° 42' 03.09", W083° 31' 57.98"	0.0 E	40	1149.3	null	PSI FAA 694088-006	
ESV:		Bearing [True]: 80.0° to 145.0° Bearing [Mag]: 80.0° to 145.0°				Arc Distance: Out to 65.0 NM Altitude: 3900.0 to 11000.0 ft		



Graphic Depiction 1



Graphic Depiction 2



DME DME Assessment Results for KZLOV1 path KDTW:RW22R:DER_JOELU

Results Summary

Flyability:	Completed
DME/DME:	Completed - No Critical DMEs
Name:	Robert CTR Ellis
Project File:	C:\Users\Robert CTR Ellis\Documents\Project Files\DTW\KDTW KZLOV ONE (RNAV) SID 20210722\KDTW KZLOV ONE (RNAV) SID DME ELLIS 20210721.tgs
Output File:	C:\Users\Robert CTR Ellis\Documents\Project Files\DTW\KDTW KZLOV ONE (RNAV) SID 20210722\KDTW [IFPA] KZLOV1 20210722_1042 CDT\KDTW-RW22R-DER_JOELU\KDTW KZLOV1 SID KDTW RW22R JOELU 20210722_1042 CDT.pdf
Procedure Name:	KZLOV1
Software: DmeDmePlugin:	6.3.0
Date/Time:	07/22/2021 10:42 CDT
Databases:	DTED Level 0 MAX

Failures

No Failures

Warnings

No Warnings

Notes For Flight Check

None

Flight Plan

Name	Type	Lat/Lon	Altitude (ft)	VNAV Mode	Ground Speed (kts)	Turn Type	Leg Type
KDTW:RW22R:DER	WP	N42° 12' 07.82", W083° 23' 02.40"	645.2	VNAV	130	FLY_BY	TF
JOELU	WP	N42° 02' 13.33", W083° 21' 16.60"	4000	VNAV	200	FLY_BY	TF
Climb Gradient: 0.0 ft/NM up to 1146.0 ft MSL							

Flyability

Flight Type:	SID
Selected Airport:	KDTW [IFPA]
Climb Gradient:	0.0 ft/NM up to 1146.0 ft MSL
Speeds:	130 at the Runway DER
	145 at the end of the VA or VI leg
	200 Ground Speed to 11000 FT
	240 Ground Speed to 18000 FT
	260 Ground Speed to 24000 FT
	340 Ground Speed above 24000 FT
Descent During a Turn:	Allowed
VNAV Mode:	Flight Plan

DME DME Assessment Results for KZLOV1 path KDTW:RW22R:DER_JOELU

DME/DME	
RNP:	RNP 2
Flight Mode:	Manual
Line of Sight (DTED Level 0 Max):	Evaluated
Inertial Drift:	Enabled
Initial Drift:	0.558 NM
INS Drift Rate:	8.0 NM/Hour
Range Mode:	OSV
RNP Edges:	Evaluated
Min DME Range:	3.0 NM
DME Types:	DME, VOR-DME, VORTAC
DME Include Angles:	30 to 150
Critical DMEs:	Allowed
DoD Facilities:	Not included
Foreign Facilities:	Not included
High DMEs:	Included
Low DMEs:	Included
Terminal DMEs:	Included
Flight Check DMEs:	Not selected
Higher Altitudes:	Not Evaluated
Near Maximum Altitude:	Not Evaluated
Automatic ESVs:	Not enabled
Disabled DMEs:	None

DME/DME (Continued)										
DMEs Used										
#	Name	Lat/Lon	MAGVAR	Range	Type	Source	Critical	Status	Time	Distance
1	DXO	N42° 12' 47.29", W083° 21' 59.99"	6.0 W	130	H	IFPA	NO	Enabled	12 %	12.2 %
2	CRL	N42° 02' 52.90", W083° 27' 27.26"	3.0 W	130	H	IFPA	NO	Enabled	12 %	12.2 %
3	JXN	N42° 15' 33.26", W084° 27' 30.78"	5.0 W	40	L	IFPA	NO	Enabled	1.8 %	2.4 %
4	SVM	N42° 24' 31.11", W083° 35' 38.05"	3.0 W	40	L	IFPA	NO	Enabled	1.8 %	2.4 %

Flight Check DME Selection						
Distance [NM]	Selected DMEs					Alternate
0.0						
4.7	CRL	DXO				
5.7						
10.0	CRL	DXO	JXN	SVM		

Inertial Drift Segments			
#	Start Location	End Location	Length [NM]
1	N42° 12' 05.94", W083° 23' 03.79"	N42° 07' 39.81", W083° 22' 43.65"	4.6222
2	N42° 06' 38.30", W083° 22' 27.23"	N42° 02' 27.53", W083° 21' 20.38"	4.2595

Available DMEs by Waypoints		
Waypoint Before	Waypoint After	DME List
KDTW:RW22R:DER	JOELU	JXN, DXO, SVM, CRL

DME DME Assessment Results for KZLOV1 path KDTW:RW22R:DER_JOELU

User Data Files

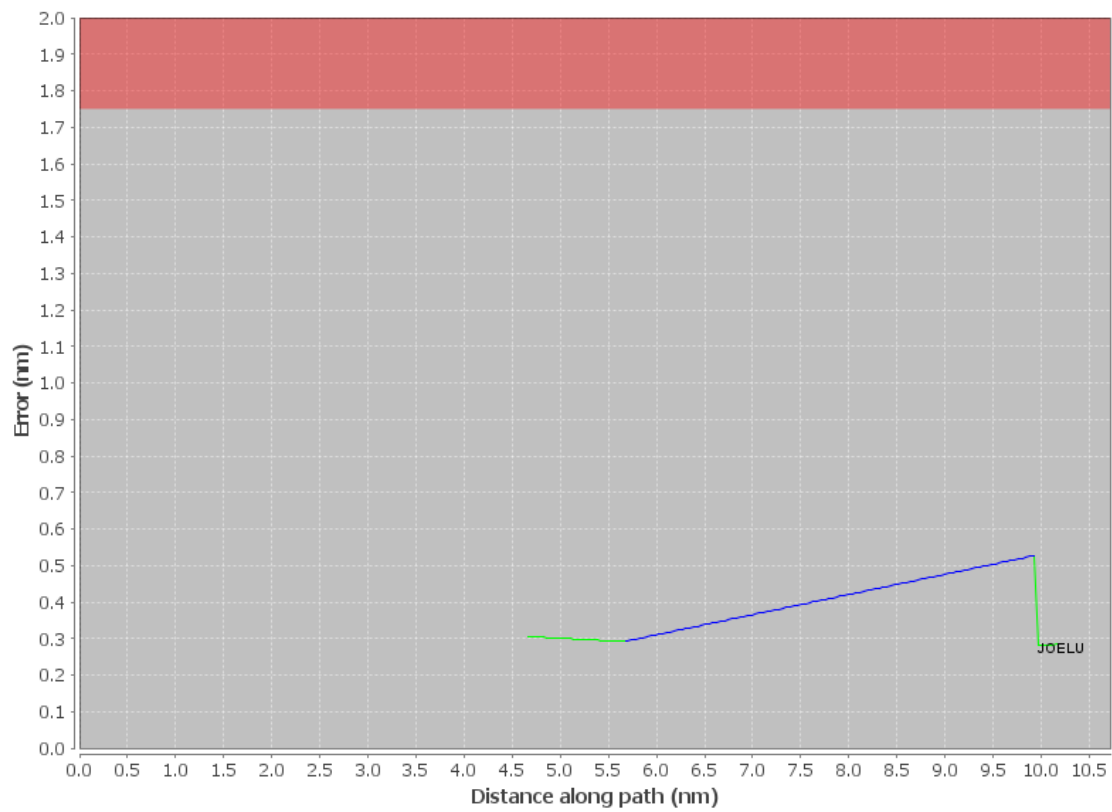
#	File Name
1	UserDMEsKDTW [IFPA] KZLOV1 SID_20210420_1120 CDT.udt

User DMEs

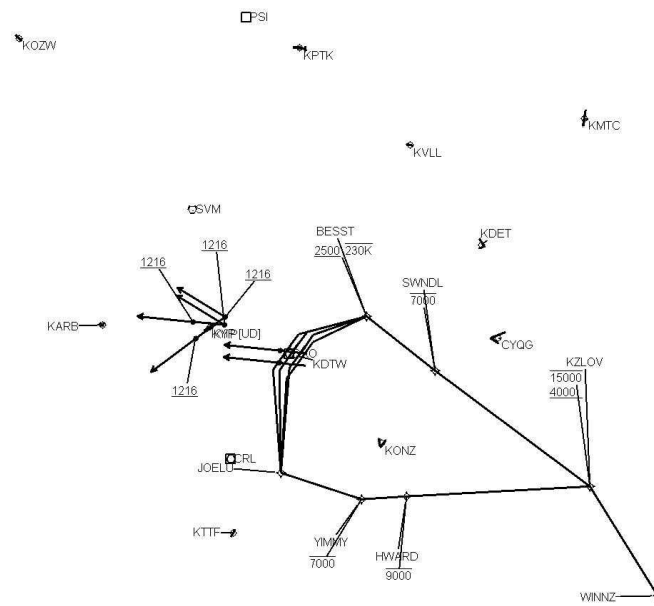
#	Name	Lat/Lon	MAGVAR	Range	Elevation [ft]	Frequency	Replaces	Status
1	DJB FAA 704144-021 DJB [IFPA]	N41° 21' 29.03", W082° 09' 43.09"	5.0 W	130	780	113.6	DJB FAA 704144-021	
ESV:		Bearing [True]: 313.0° to 359.0° Bearing [Mag]: 318.0° to 4.0°				Arc Distance: Out to 60.0 NM Altitude: 4000.0 to 16000.0 ft		
2	JXN FAA 701964 - 016 JXN [IFPA]	N42° 15' 33.26", W084° 27' 30.78"	5.0 W	40	994	null	JXN FAA 701964 - 016	
ESV:		Bearing [True]: 100.0° to 111.0° Bearing [Mag]: 105.0° to 116.0°				Arc Distance: Out to 61.0 NM Altitude: 3900.0 to 9000.0 ft		
3	PSI FAA 694088-006 PSI [IFPA]	N42° 42' 03.09", W083° 31' 57.98"	0.0 E	40	1149.3	null	PSI FAA 694088-006	
ESV:		Bearing [True]: 80.0° to 145.0° Bearing [Mag]: 80.0° to 145.0°				Arc Distance: Out to 65.0 NM Altitude: 3900.0 to 11000.0 ft		

DME DME Assessment Results for KZLOV1 path KDTW:RW22R:DER_JOELU

DME Error



Graphic Depiction 1



DME DME Assessment Results for KZLOV1 path KDTW:RW22R:DER_JOELU

Graphic Depiction 2

