

Flight Procedures Cover Page	Task Action: FLIGHT CHECK	Task Type: IAP	Estimated Chart Date: 04/22/2021	APWS Task ID: 3CBE924D54514332B1BF3F49BC451A82	APWS Project ID: A285A2D40E6140DD9120450B6DCE56FB
Procedure: RNAV (GPS) RWY 28 AMDT 1		Enroute: NO	Specialist: Malone, Curtis		Agreement Number:
Airport ID: 4A4	Airport Name: POLK COUNTY/CORNELIUS MOORE FLD		Airport City: CEDARTOWN		State: GA
Facility ID:	Facility Type:	Flight Inspection Remark Type: New FC Slot			

Procedure Comments:

FULL AMENDMENT COMPLETED UTILIZING PENDING DATA.
 RUNWAY EXTENDED 1054 RESULTING IN CHANGE TO FAS DATA LENGTH OFFSET VALUE.
 FLIGHT CHECK CAUSED BY CRC REMAINDER CHANGE FROM "430266B3" TO "A5D70613".
 CONTACT JASON KRETSCHMER (405) 954-4019.

Digitally signed by
JASON KRETSCHMER
 Jan 19, 2021



02/11/2021: THIS IS A CORRECTED COPY OF THE FORMS APPROVED ON: 01/19/2021.

1. CHANGED REQUIRED EFFECTIVE DATE FROM "ROUTINE" TO 04/22/2021.
2. ADDED "PENDING" UNDER FLIGHT INSPECTED BY, IN THE SIGNATURE BLOCK.

02/16/2021: THIS IS A CORRECTED COPY OF THE FORMS APPROVED ON: 01/19/2021.

1. CHANGED AIRPORT ELEVATION FROM 973 TO 974, IN BASIC INFO ON 8260-3.

CEDARTOWN, GEORGIA

AL-5501 (FAA)

FIG

WAAS CH 62824 W28A	APP CRS 282°	Rwy Idg TDZE Apt Elev	5060 969 973
--	------------------------	-----------------------------	---

RNAV (GPS) RWY 28

POLK COUNTY/CORNELIUS MOORE FIELD (4A4)

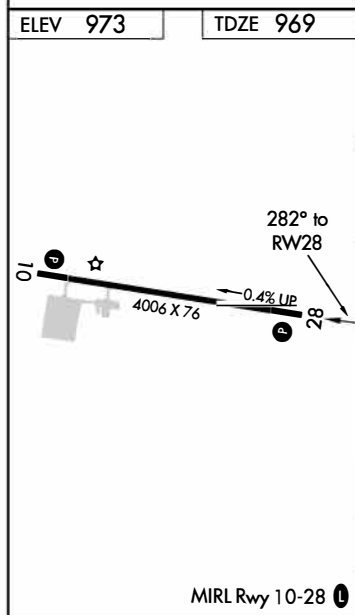
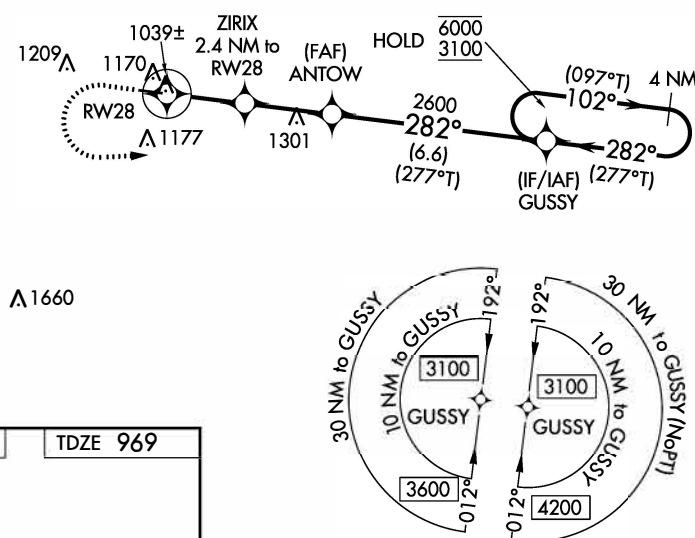
RNP APCH.

NA Baro-VNAV and VDP NA when using Cartersville altimeter setting. Rwy 28 helicopter visibility reduction below $\frac{1}{4}$ SM NA. For uncompensated Baro-VNAV systems, LNAV/VNAV NA below -8°C or above 54°C. Obtain local altimeter setting on CTAF, when not received, use Cartersville altimeter setting: increase LPV DA to 1287 feet; increase LNAV/VNAV DA to 1353 feet and all visibilities $\frac{1}{2}$ SM; increase all MDAs 80 feet and visibility Cts C and D $\frac{1}{2}$ SM.

MISSED APPROACH:
Climb to 1500 then climbing left turn to 3100 direct GUSSY and hold.

ATLANTA CENTER
124.5 270.325

UNICOM
122.8 (CTAF) 0

PROTOTYPE-NOT FOR NAVIGATION

1500		3100	GUSSY	*ZIRIX 2.4 NM to RW28		ANTOW	GUSSY	4 NM Holding Pattern
*LNAV only.		*1 NM to RW28		2600		2600	282° (277°T)	6000
1740*		1 NM		1.4 NM		2.7 NM		3100
1 NM		1.4 NM		2.7 NM		6.6 NM		GP 3.00°
CATEGORY		A		B		C		D
LPV DA		1219-1		250 (300-1)				
LNAV/VNAV DA		1285-1		316 (400-1)				
LNAV MDA		1300-1		331 (400-1)				

AUTOMATED AL-5501 RNAV (GPS) RWY 28

SE-4

11-16-2020

COMPILER: SQ

REVIEWER:

DBL CHKR:

EFF: FIG

CEDARTOWN, GEORGIA

Amdt 1 FIG

POLK COUNTY/CORNELIUS MOORE FIELD (4A4)

34°01'N-85°09'W

RNAV (GPS) RWY 28

WAAS CH 62824 W28A	APP CRS 281°	Rwy Idg TDZE Apt Elev	4006 974 974
--	------------------------	-----------------------------	---

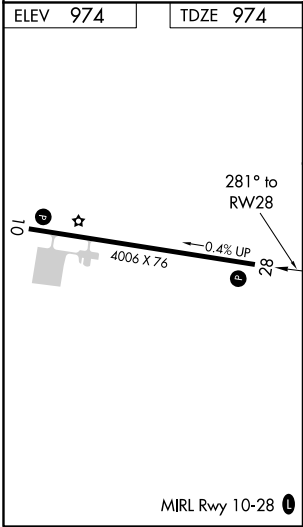
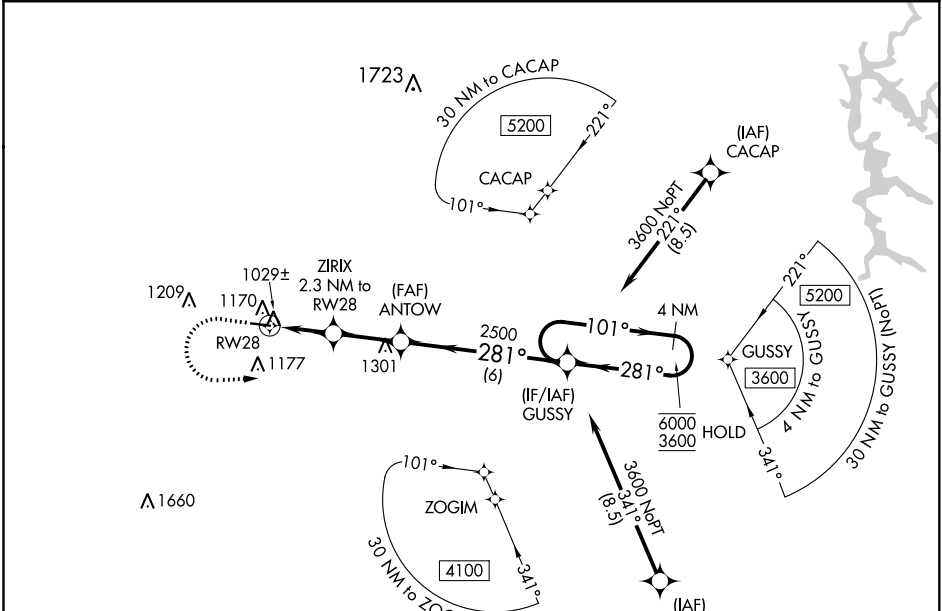
OLD

RNAV (GPS) RWY 28

POLK COUNTY AIRPORT-CORNELIUS MOORE FIELD (4A4)

RNP APCH.	MISSED APPROACH: Climb to 1500 then climbing left turn to 3600 direct GUSSY and hold.
<div><div>T</div><div>Rwy 28 helicopter visibility reduction below ¾ SM NA. Obtain local altimeter setting on CTAF, when not received, use Cartersville altimeter setting and increase all MDA 80 feet; increase LP and LNAV Cats C/D visibility ½ SM.</div></div> <div><div>NA</div><div></div></div>	

ATLANTA CENTER 124.5 270.325	UNICOM 122.8 (CTAF) 0
--	---------------------------------



1500	3600	GUSSY	ZIRIX 2.3 NM to RW28	ANTOW	GUSSY	4 NM Holding Pattern
0.9 NM to RW28	1.4 NM	2.4 NM	6 NM	1720	2500	101° → 6000 ← 281° 3600
0.9 NM	1.4 NM	2.4 NM	6 NM			
CATEGORY	A	B	C	D		
LP MDA	1280-1 326 (400-1)					
LNAV MDA	1400-1	446 (500-1)	1400-1 3/8	446 (500-1 3/8)		

POLK COUNTY AIRPORT
CEDARTOWN, GA
RNAV (GPS) RWY 28
SCALE 1:500,000
AMDT 1

TREE (2013)

TREE (1478)

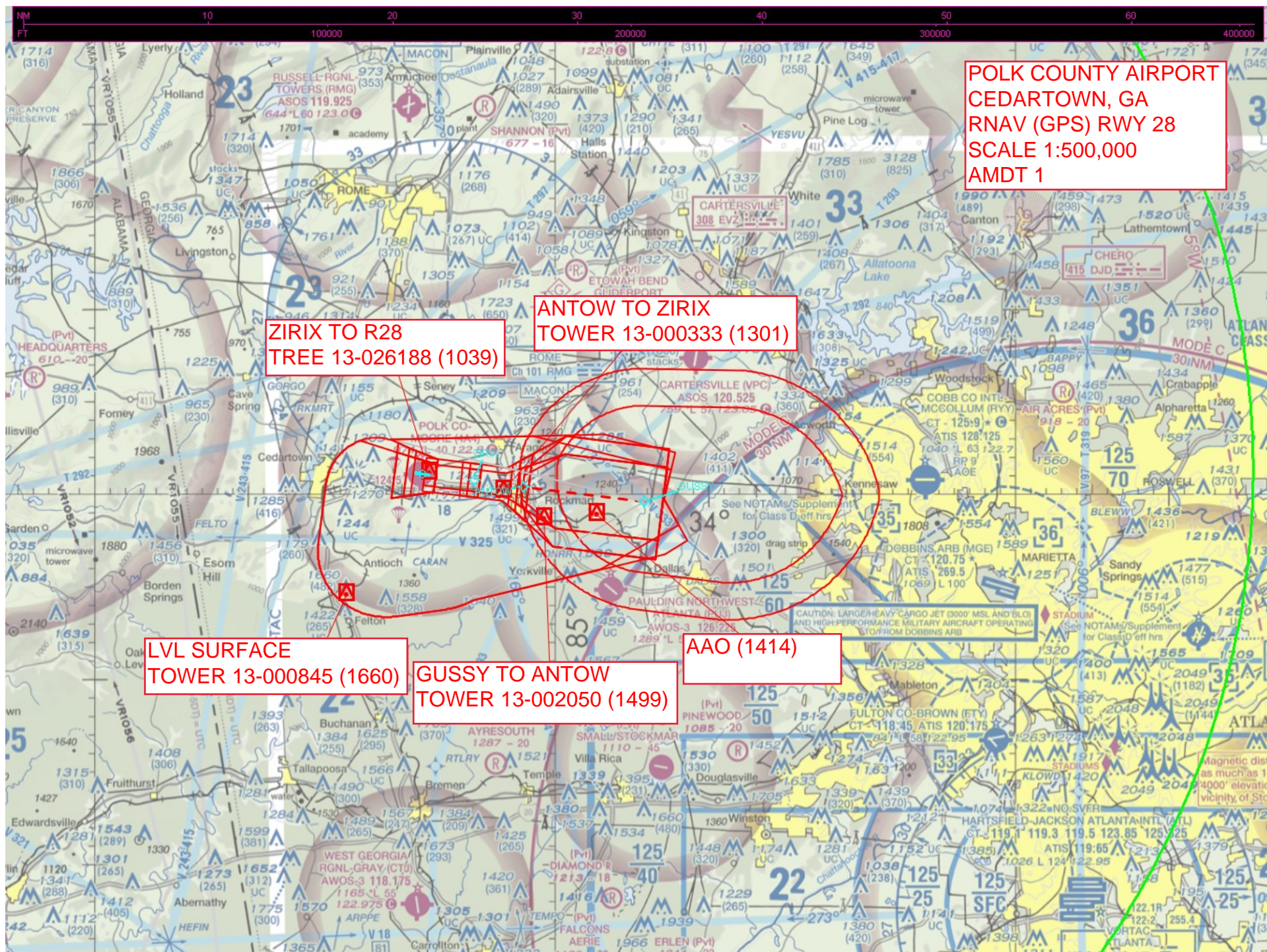


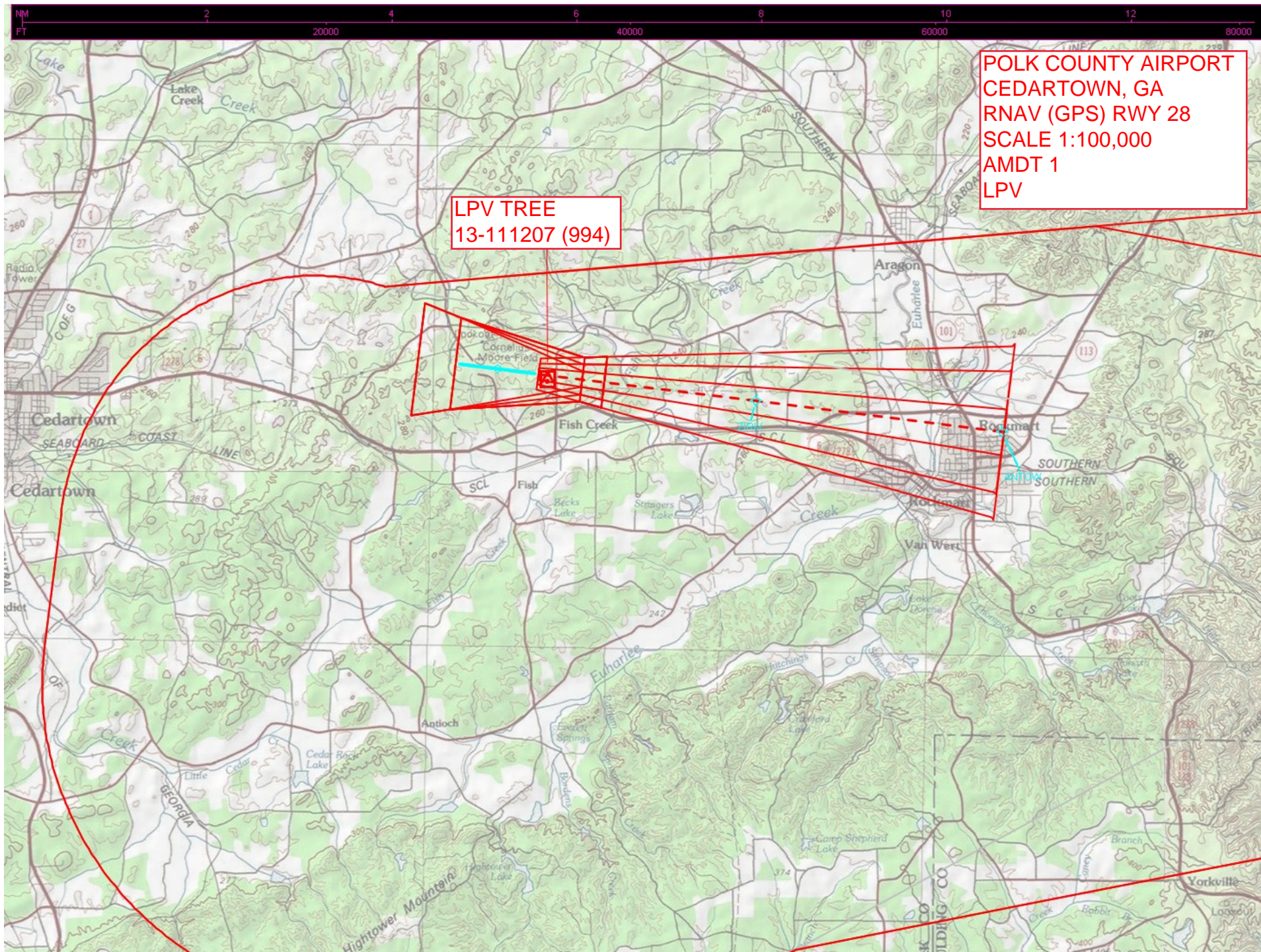
POLK COUNTY AIRPORT
CEDARTOWN, GA
RNAV (GPS) RWY 28
SCALE 1:500,000
AMDT 1

TOWER
13-001661 (3128)

TREE (1528)

Magnetic disturbance of as much as 10° exists at 4000' elevation in the vicinity of Stone Mountain.





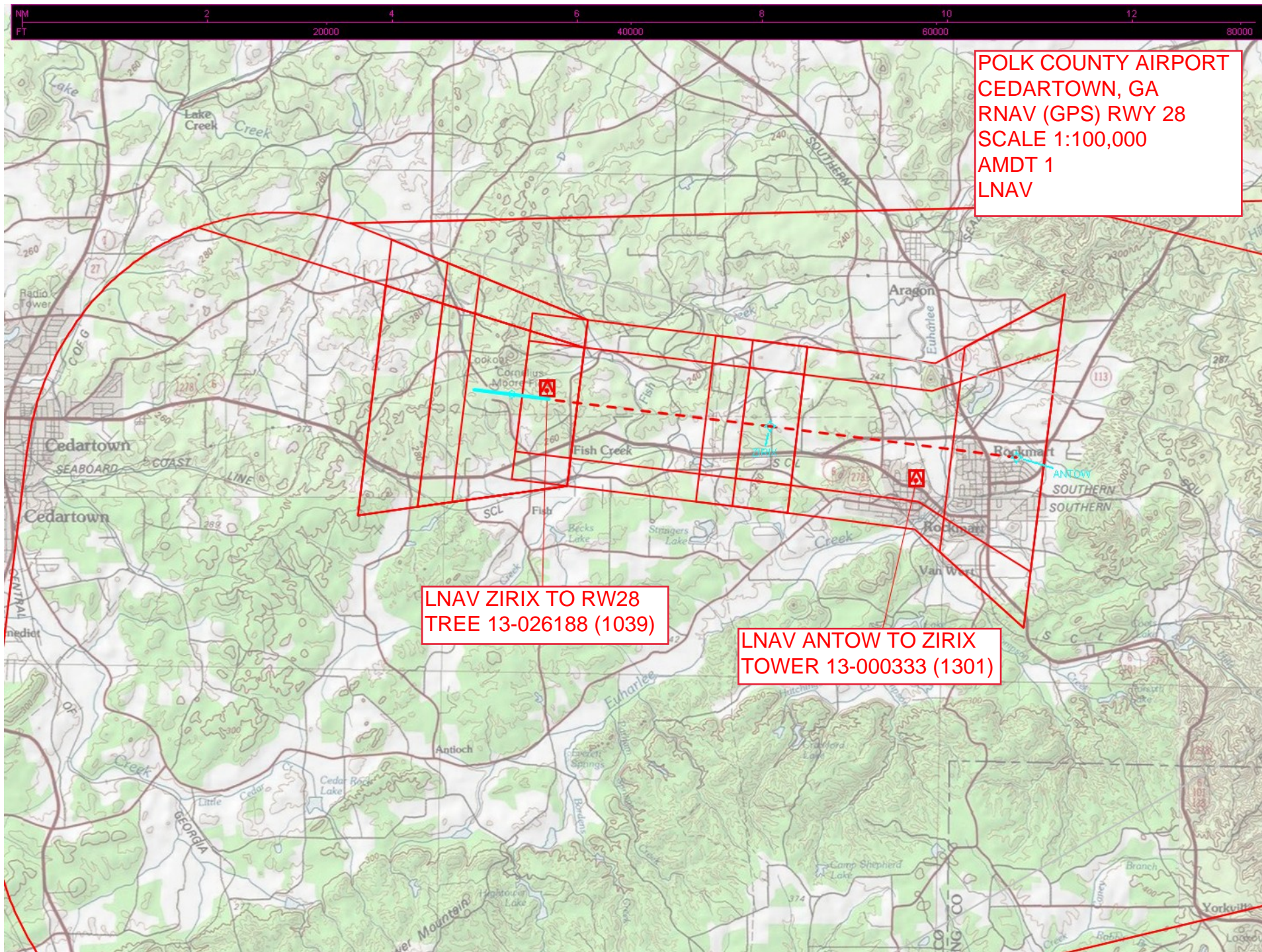
POLK COUNTY AIRPORT
CEDARTOWN, GA
RNAV (GPS) RWY 28
SCALE 1:100,000
AMDT 1
LPV

LPV TREE
13-111207 (994)

POLK COUNTY AIRPORT
CEDARTOWN, GA
RNAV (GPS) RWY 28
SCALE 1:100,000
AMDT 1
LNAV/VNAV

**MISSED LNAV/VNAV PENETRATION
TOWER 13-000697 (1170)**

LNAV/VNAV ASC



Federal Aviation Administration Categorical Exclusion Declaration

Date: 03/24/20

IFP: Erstfeld, David (David.F.Erstfeld@faa.gov)

Airport Contact: -

Request ID: 4A4_20324

Single or Multiple Procedure: Multiple

Procedure Name(s): RNAV (GPS) 10 Amdt 1 RNAV (GPS 28 Amdt 1 VOR Amdt 14 Departure Procedure (ODP) (due to runway extension)

Procedure Request Description:

Project initiated due to Runway extension at Airport. Associated tree removal and other approach improvements actions will occur with these amendments. See uploaded documents

Declaration of Exclusion:

The FAA has reviewed the above referenced proposed action and it has been determined, by the undersigned, to be categorically excluded from further environmental documentation according to FAA Order 1050.1, "Environmental Impacts: Policies and Procedures." The implementation of this action will not result in any extraordinary circumstances in accordance with FAA Order 1050.1.

Basis for this Determination:

This review was conducted in accordance with policies and procedures in Department of Transportation Order 5610.1, "Procedures for Considering Environmental Impacts" and FAA Order 1050.1.

The applicable Categorical Exclusion is:

5-6.5.k: Publication of existing air traffic control procedures that do not essentially change existing tracks, create new tracks, change altitude, or change concentration of aircraft on these tracks. (ATO, AVS)

The above flight procedure has been developed within the accepted parameters.

Concurrence/Reviewed By: Andrew Pieroni Date: March 24, 2020

Title: Environmental Protection Specialist

Approved By: Charles J Gibson Date: 03/24/2020

Title: Team Manager, ECINA, OSG/ESC