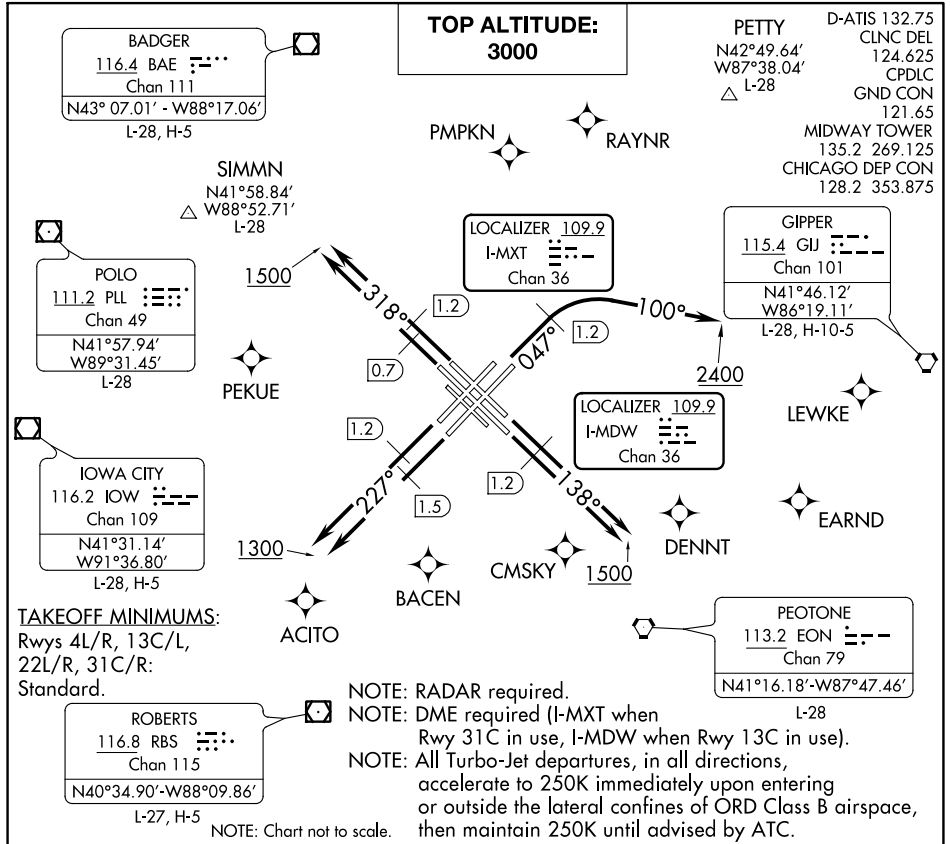


Flight Procedures Cover Page	Task Action: Abbreviated Amendment	Task Type: SID	Estimated Chart Date: 11/30/2023	APWS Task ID: 3C5949A460F64E7F84C3E16E47C24333	APWS Project ID: A7E82063854E484EA1B811E11BD86C93
Procedure: SID CICERO THREE CHICAGO IL KMDW		Enroute: YES	Specialist: Nesbitt, Cole		Agreement Number:
Airport ID: KMDW			Airport City: CHICAGO		State: IL
Facility ID:	Facility Type:	Flight Inspection Remark Type:			
<div>Procedure Comments: ABBREVIATED AMENDMENT USING ACTIVE DATA.</div> <div>PLL VORMON.</div> <div>PROCESSED IAW TECHNICAL SUPPORT GROUP (AJF-17) MEMO DATED 07/07/2021 GUIDANCE FOR PROCEDURAL CHANGES REQUIRING FLIGHT INSPECTION/VALIDATION.</div> <div>CONTACT ERIK SUSKI: 405-650-4749.</div> <div>09/12/2023: THIS IS A CORRECTED COPY TO THE FORM APPROVED ON 09/05/2023: PBN EQUIPMENT NOTES: CHANGED FROM "RNAV 1 - GPS." TO "RNAV 1 - GPS. FROM ACITO, BACEN, CMSKY, DENNT, EARND, LEWKE, PEKUE, PMPKN, RAYNR."</div> <div>Digitally signed by ERIC N SUSKI Sep 12, 2023</div> <div>QUALITY 20 CHECKED</div> <div>J ZEDER 09/12/2023 16 QUALITY CHECKED</div> <div>QUALITY 41 CHECKED</div>					

CICERO TWO DEPARTURE

OLD

CHICAGO MIDWAY INTL (MDW)
CHICAGO, ILLINOIS



DEPARTURE ROUTE DESCRIPTION

TAKEOFF RUNWAYS 4L/R: Assigned headings 360° (CW) thru 080° climb heading 047° to 1.2 DME, then continue climbing right turn heading 100° to 2400, thence . . .

TAKEOFF RUNWAYS 13C/L: Climb heading 138° to 1.2 DME, then continue climb to 1500, thence . . .

TAKEOFF RUNWAY 22L: Climb heading 227° to 1.5 DME, then continue climb to 1300, thence . . .

TAKEOFF RUNWAY 22R: Climb heading 227° to 1.2 DME, then continue climb to 1300, thence . . .

TAKEOFF RUNWAY 31C: Climb heading 318° to 0.7 DME, then continue climb to 1500, thence . . .

TAKEOFF RUNWAY 31R: Climb heading 318° to 1.2 DME, then continue climb to 1500, thence . . .

ALL AIRCRAFT: Expect RADAR vectors to first enroute fix. Maintain 3000 or assigned lower altitude. Expect clearance to requested altitude/flight level 10 (ten) minutes after departure. Complete initially assigned turn within 4 DME. . . .on tower assigned heading/vector to assigned altitude.

CICERO TWO DEPARTURE