

Flight Procedures Cover Page	Task Action: FLIGHT CHECK	Task Type: IAP	Estimated Chart Date: 09/08/2022	APWS Task ID: 3BD6D17F6DE84E78B731846E40ECE292	APWS Project ID: CED25D407347403DBB40BFAF1EEA677B
Procedure: ILS Y OR LOC Y RWY 8 AMDT 14		Enroute: NO	Specialist: Sickels, Dale		Agreement Number:
Airport ID: KJAX			Airport City: JACKSONVILLE		State: FL
Facility ID: JAX	Facility Type: ILS	Flight Inspection Remark Type: New FC Slot			
<div>Procedure Comments:</div> <div><div>Added Y suffix to procedure name due to HI procedure to same runway.</div><div>J ZEDER 06/10/2022</div><div>TCH updated to design TCH - old: 51.4, new 54.4.</div><div>Order 8260.3, Chapter 2, New Circling Criteria Applied.</div><div>Contact Jason Kretschmer, AJV-A421, 405-954-4019</div><div><div>Digitally signed by</div><div>JASON KRETSCHMER</div><div>Jun 15, 2022</div></div></div> <div><div>QUALITY 16 CHECKED</div><div>QUALITY 38 CHECKED</div></div>					

LOC I-JAX 110.7	APP CRS 077°	Rwy Idg 10000 TDZE 30 Apt Elev 30
---------------------------	------------------------	--

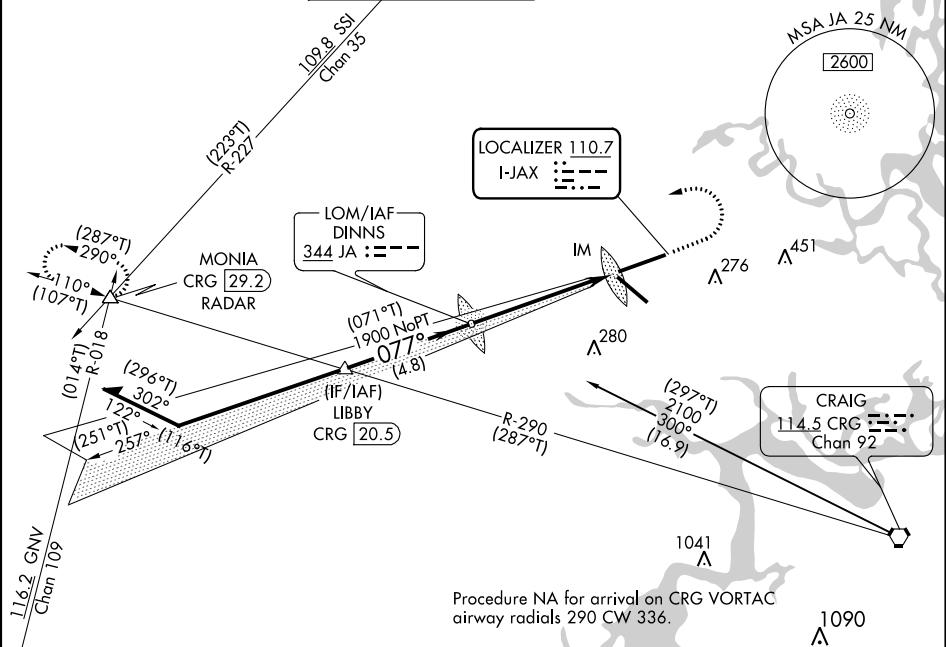
ILS Y or LOC Y RWY 8
JACKSONVILLE INTL (JAX)

V For inop ALS, increase S-ILS 8 Cat E visibility to RVR 4000 and S-LOC 8 Cat E visibility to 1 3/8 SM.

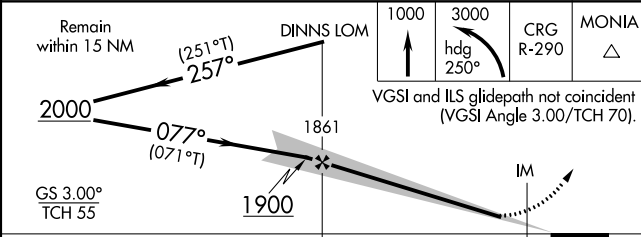
A **ALS F-2**

MISSED APPROACH: Climb to 1000 then climbing left turn to 3000 on heading 250° and on CRG VORTAC R-290 to MONIA INT/CRG 29.2 DME/RADAR and hold.

D-ATIS 125.85	JACKSONVILLE APP CON 119.0 269.9	JACKSONVILLE TOWER 118.3 317.7	GND CON 121.9 348.6	CLNC DEL 119.5 290.275	CPDLC
-------------------------	--	--	-------------------------------	----------------------------------	-------



PROTOTYPE-NOT FOR NAVIGATION



CATEGORY	A	B	C	D	E
S-ILS 8	230/18 200 (200-1/2)				
S-LOC 8	480/24	450 (500-1/2)	480/45 450 (500-3/4)		
CIRCLING	520-1	490 (500-1)	580-1 1/2 550 (600-1 1/2)	580-2 550 (600-2)	760-2 1/2 730 (800-2 1/2)

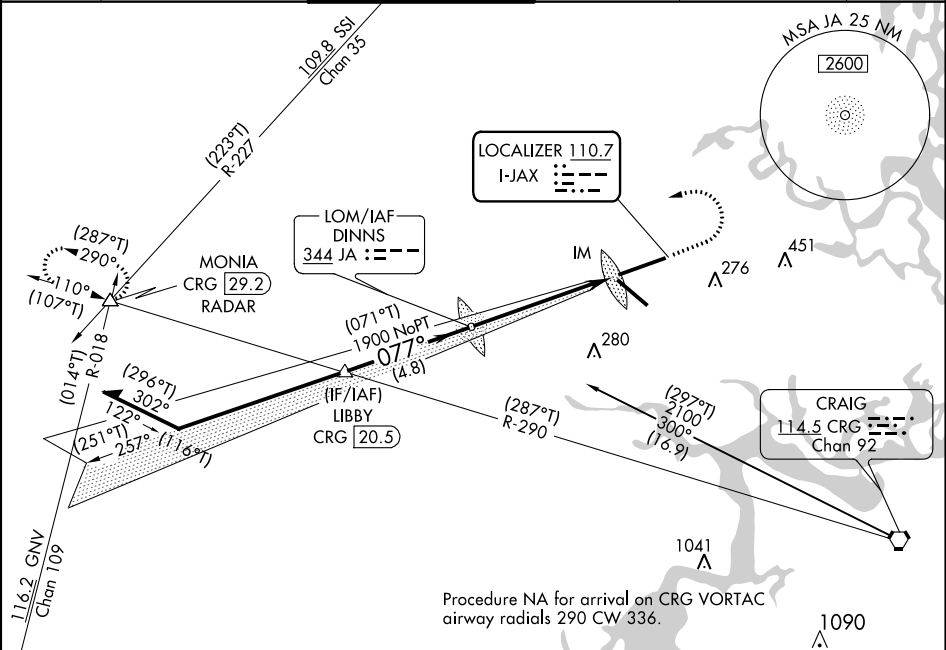
ELEV 30	TDZE 30
REIL Rwy 32 TDZ/CL Rwy 8, 14, and 26 HIRL Rwy 8-26 and 14-32	
FAF to MAP 5.6 NM	
Knots	60 90 120 150 180
Min:Sec	5:36 3:44 2:48 2:14 1:52

LOC I-JAX 110.7	APP CRS 077°	Rwy Idg 10000 TDZE 30 Apt Elev 30
---------------------------	------------------------	--

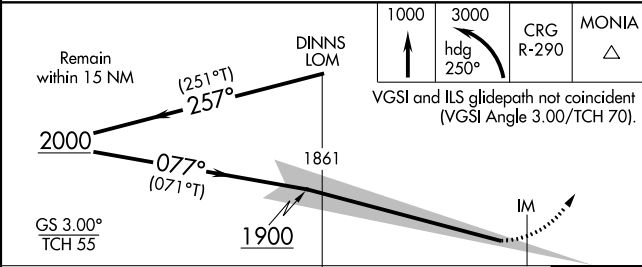
ILS Y RWY 8 (SA CAT I)
JACKSONVILLE INTL (JAX)

<div><div></div><div>Requires specific OPSPEC, MSPEC, or LOA approval.</div></div>	<div><div></div><div>ALSIF-2</div></div>	MISSED APPROACH: Climb to 1000 then climbing left turn to 3000 on heading 250° and on CRG VORTAC R-290 to MONIA INT/CRG 29.2 DME/RADAR and hold.
--	--	--

D-ATIS 125.85	JACKSONVILLE APP CON 119.0 269.9	JACKSONVILLE TOWER 118.3 317.7	GND CON 121.9 348.6	CLNC DEL 119.5 290.275	CPDLC
-------------------------	--	--	-------------------------------	----------------------------------	-------



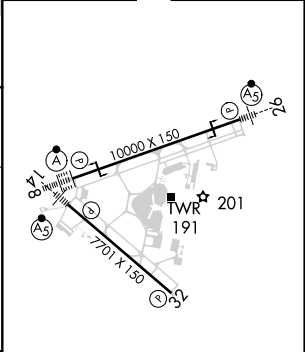
PROTOTYPE-NOT FOR NAVIGATION



CATEGORY	A	B	C	D
S-ILS 8	RA 175/14 150 DA 180			

SA CATEGORY I - SPECIAL AIRCREW
& AIRCRAFT CERTIFICATION REQUIRED

ELEV 30	TDZE 30
---------	---------

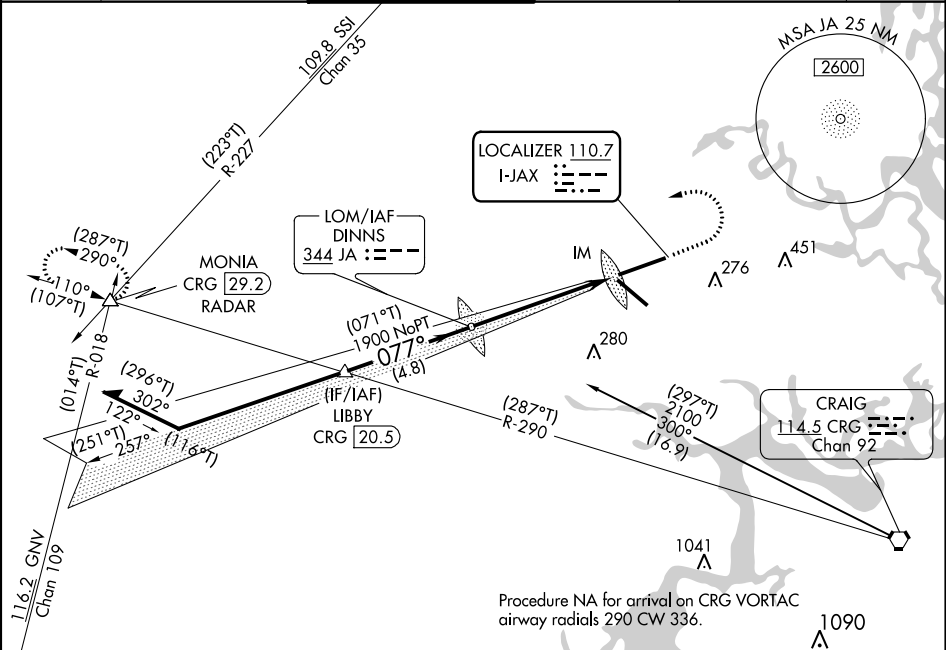


REIL Rwy 32
TDZ/CL Rwy 8, 14, and 26
HIRL Rwy 8-26 and 14-32

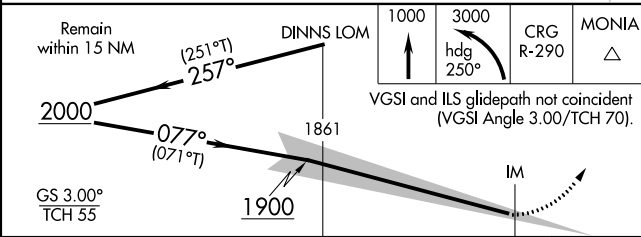
LOC I-JAX 110.7	APP CRS 077°	Rwy Idg 10000 TDZE 30 Apt Elev 30
---------------------------	------------------------	--

ILS Y RWY 8 (CAT II & III)
JACKSONVILLE INTL (JAX)

		MISSED APPROACH: Climb to 1000 then climbing left turn to 3000 on heading 250° and on CRG VORTAC R-290 to MONIA INT/CRG 29.2 DME/RADAR and hold.			
D-ATIS 125.85	JACKSONVILLE APP CON 119.0 269.9	JACKSONVILLE TOWER 118.3 317.7	GND CON 121.9 348.6	CLNC DEL 119.5 290.275	CPDLC

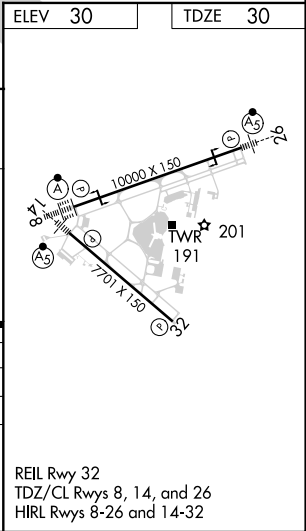


PROTOTYPE-NOT FOR NAVIGATION



CATEGORY	A	B	C	D
S-ILS 8	CAT II RA 100/12 100 DA 130			
S-ILS 8	CAT IIIa RVR 06			

CATEGORY II & III ILS - SPECIAL AIRCREW
& AIRCRAFT CERTIFICATION REQUIRED



LOC I-JAX 110.7	APP CRS 077°	Rwy Idg 10000 TDZE 29 Apt Elev 29
---------------------------	------------------------	--

ILS or LOC RWY 8

JACKSONVILLE INTL (JAX)

▼

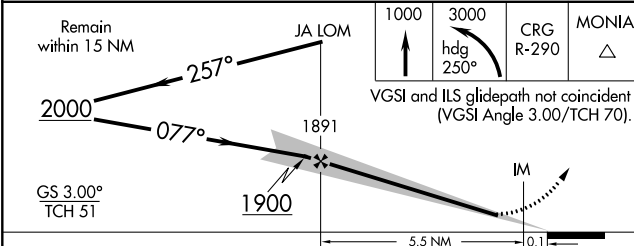
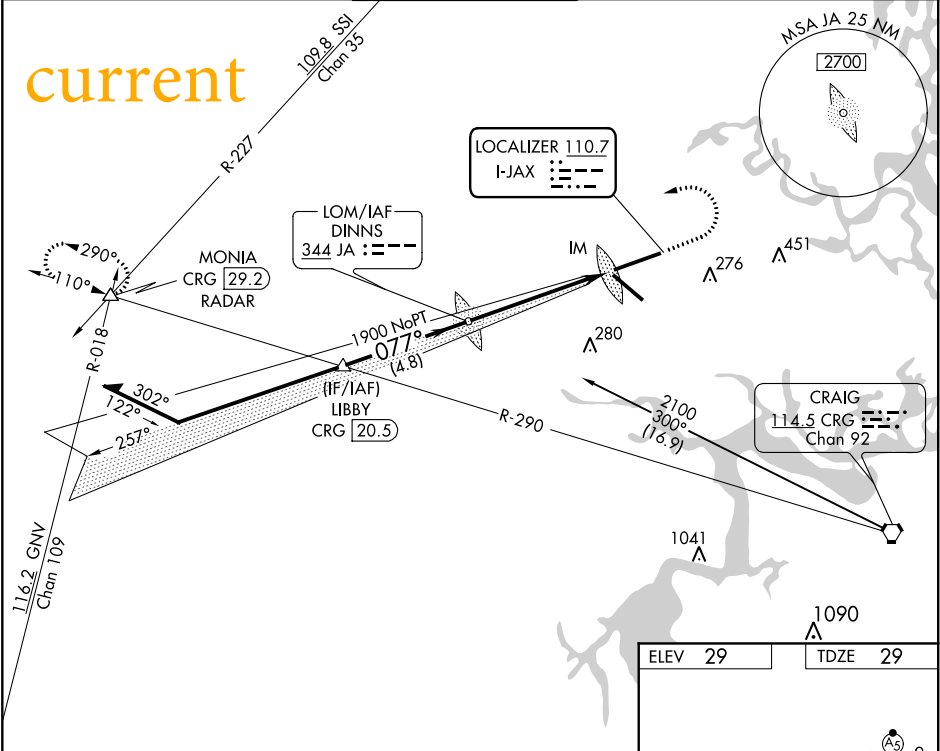
▲

For inop ALSF, increase S-ILS 8 Cat E visibility to RVR 4000, increase S-LOC 8 Cat E visibility to 1 1/8.

ALSF-2

MISSED APPROACH: Climb to 1000 then climbing left turn to 3000 on heading 250° and on CRG VORTAC R-290 to MONIA INT/CRG 29.2 DME/RADAR and hold.

D-ATIS 125.85	JACKSONVILLE APP CON 119.0 269.9	JACKSONVILLE TOWER 118.3 317.7	GND CON 121.9 348.6	CLNC DEL 119.5 290.275
-------------------------	--	--	-------------------------------	----------------------------------



CATEGORY	A	B	C	D	E
S-ILS 8	229/18 200 (200-1/2)				
S-LOC 8	480/24	451 (500-1/2)	480/45	451 (500-3/4)	
CIRCLING	520-1	491 (500-1)	520-1 1/2 491 (500-1 1/2)	640-2 611 (700-2)	760-2 1/2 731 (800-2 1/2)

ELEV 29

TDZE 29

REIL Rwy 32

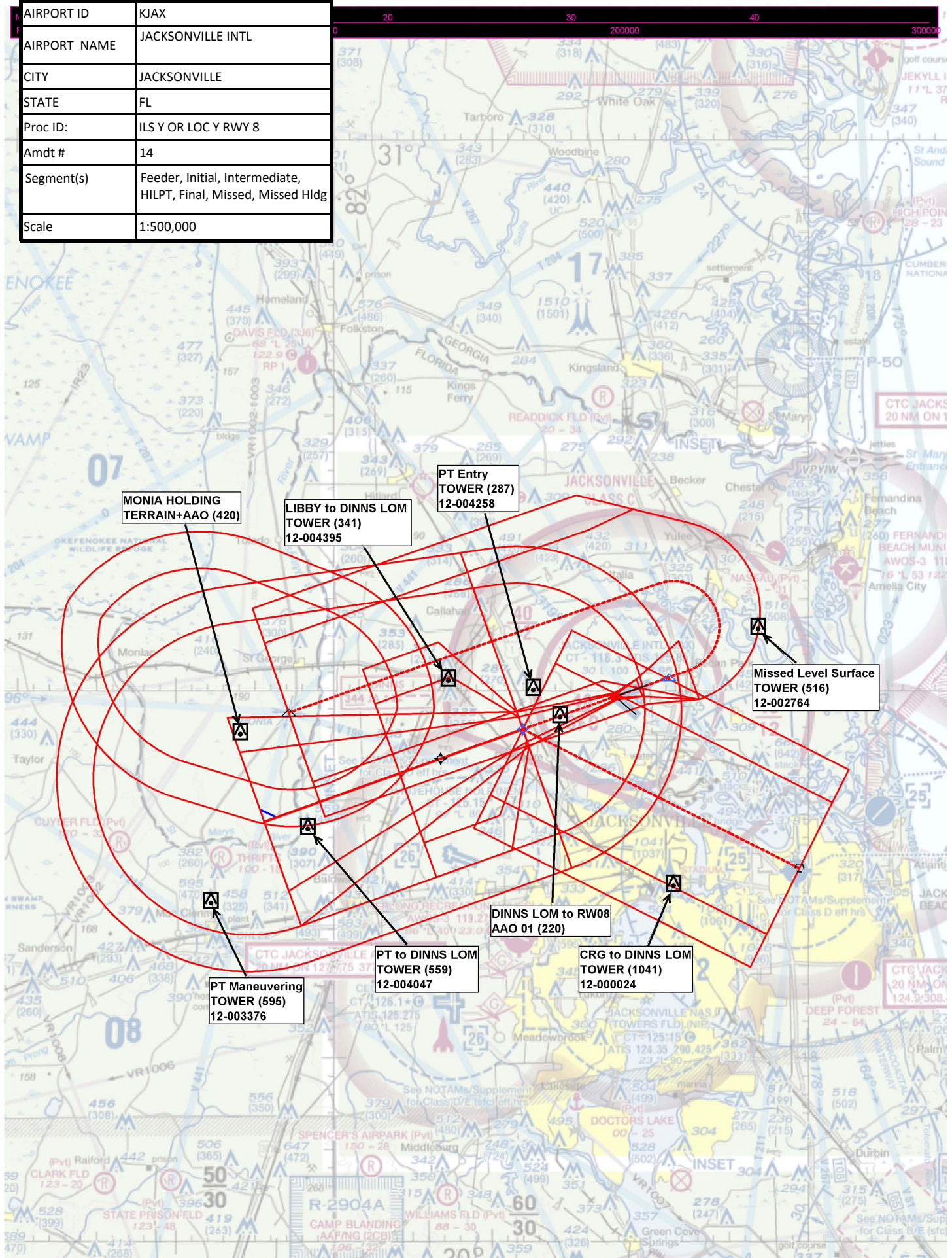
TDZ/CL Rwy 8, 14, and 26

HIRL Rwy 8-26 and 14-32

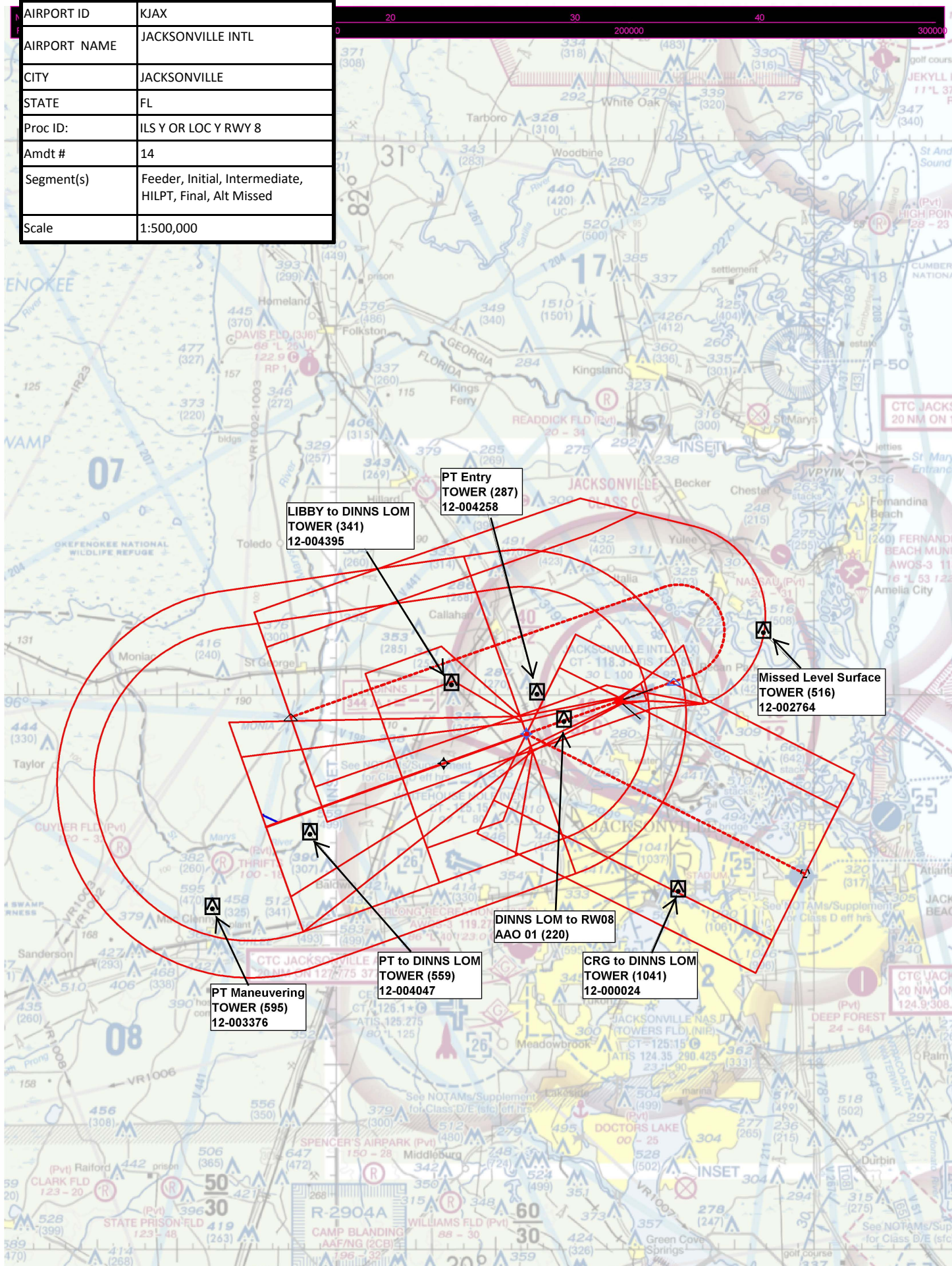
FAF to MAP 5.6 NM

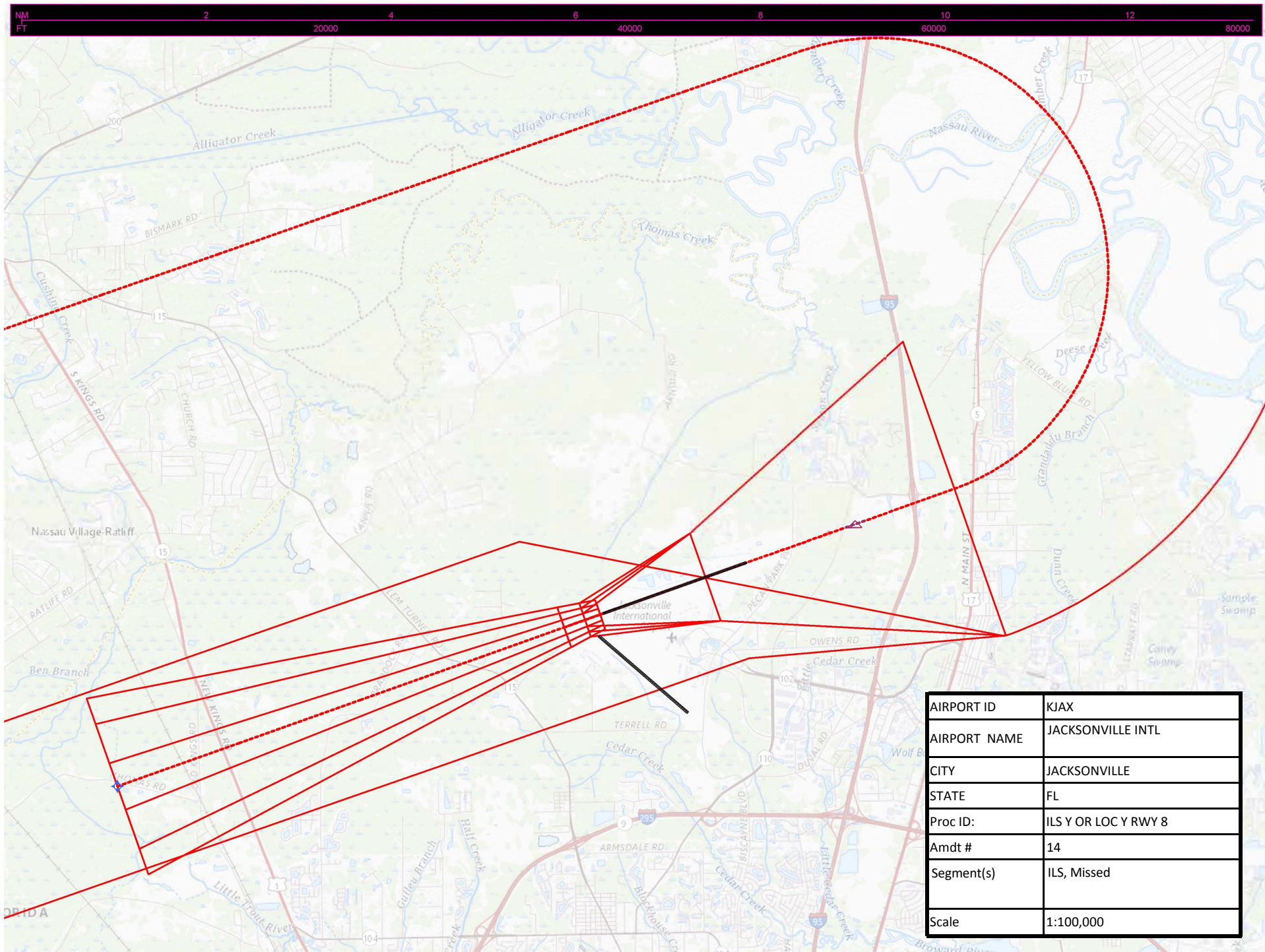
Knots	60	90	120	150	180
Min:Sec	5:36	3:44	2:48	2:14	1:52

AIRPORT ID	KJAX
AIRPORT NAME	JACKSONVILLE INTL
CITY	JACKSONVILLE
STATE	FL
Proc ID:	ILS Y OR LOC Y RWY 8
Amdt #	14
Segment(s)	Feeder, Initial, Intermediate, HILPT, Final, Missed, Missed Hldg
Scale	1:500,000

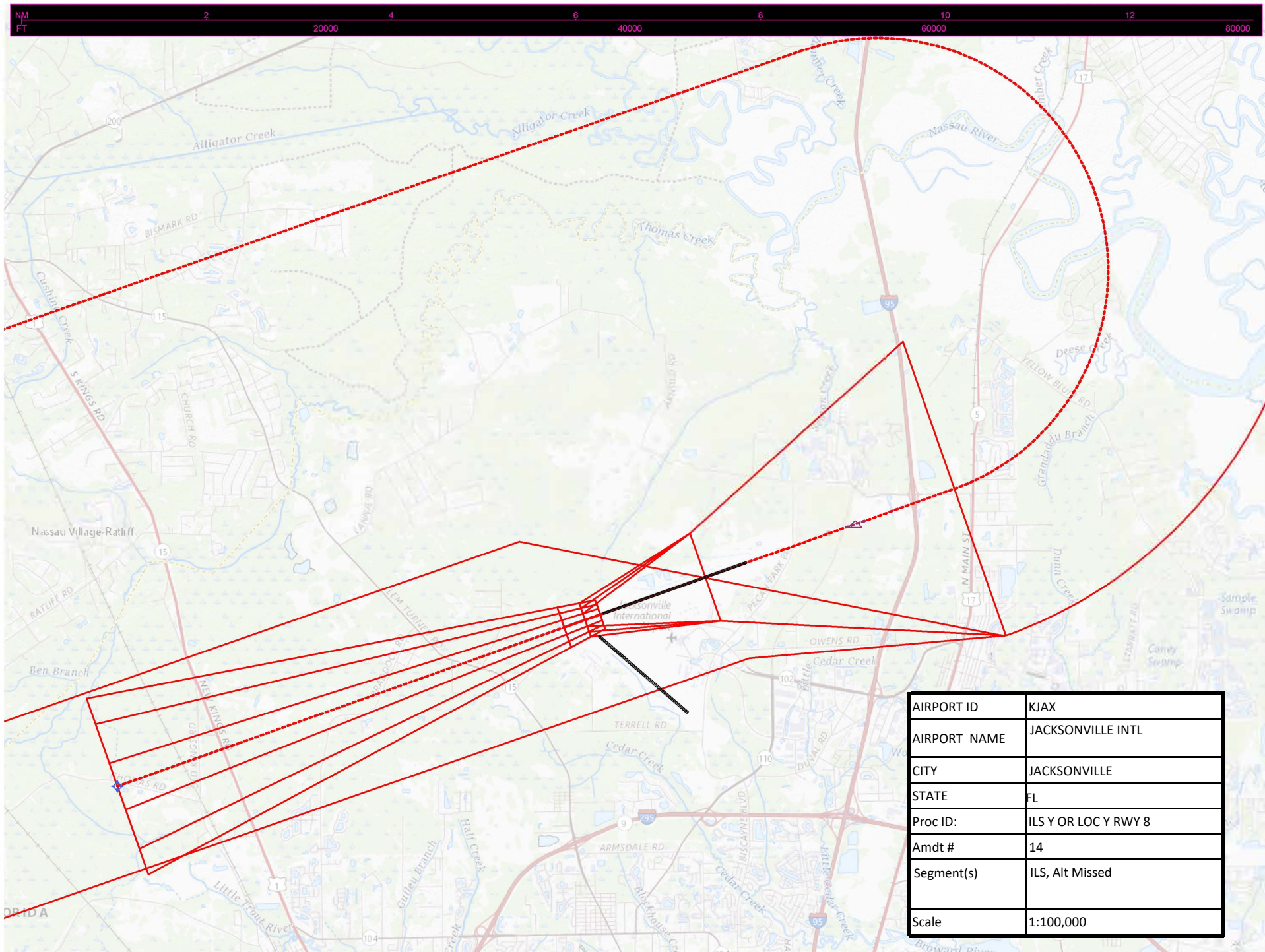


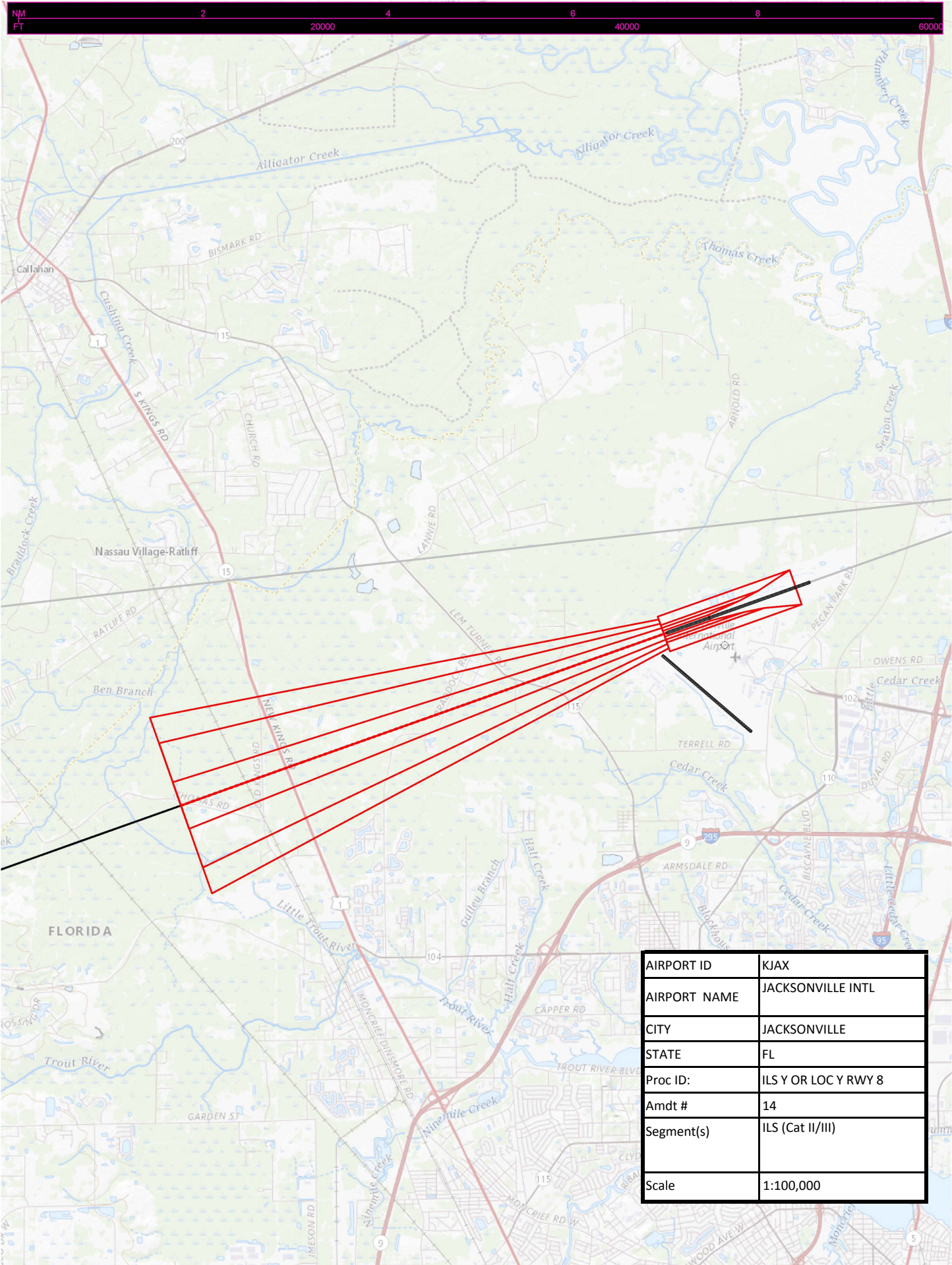
AIRPORT ID	KJAX
AIRPORT NAME	JACKSONVILLE INTL
CITY	JACKSONVILLE
STATE	FL
Proc ID:	ILS Y OR LOC Y RWY 8
Amdt #	14
Segment(s)	Feeder, Initial, Intermediate, HILPT, Final, Alt Missed
Scale	1:500,000



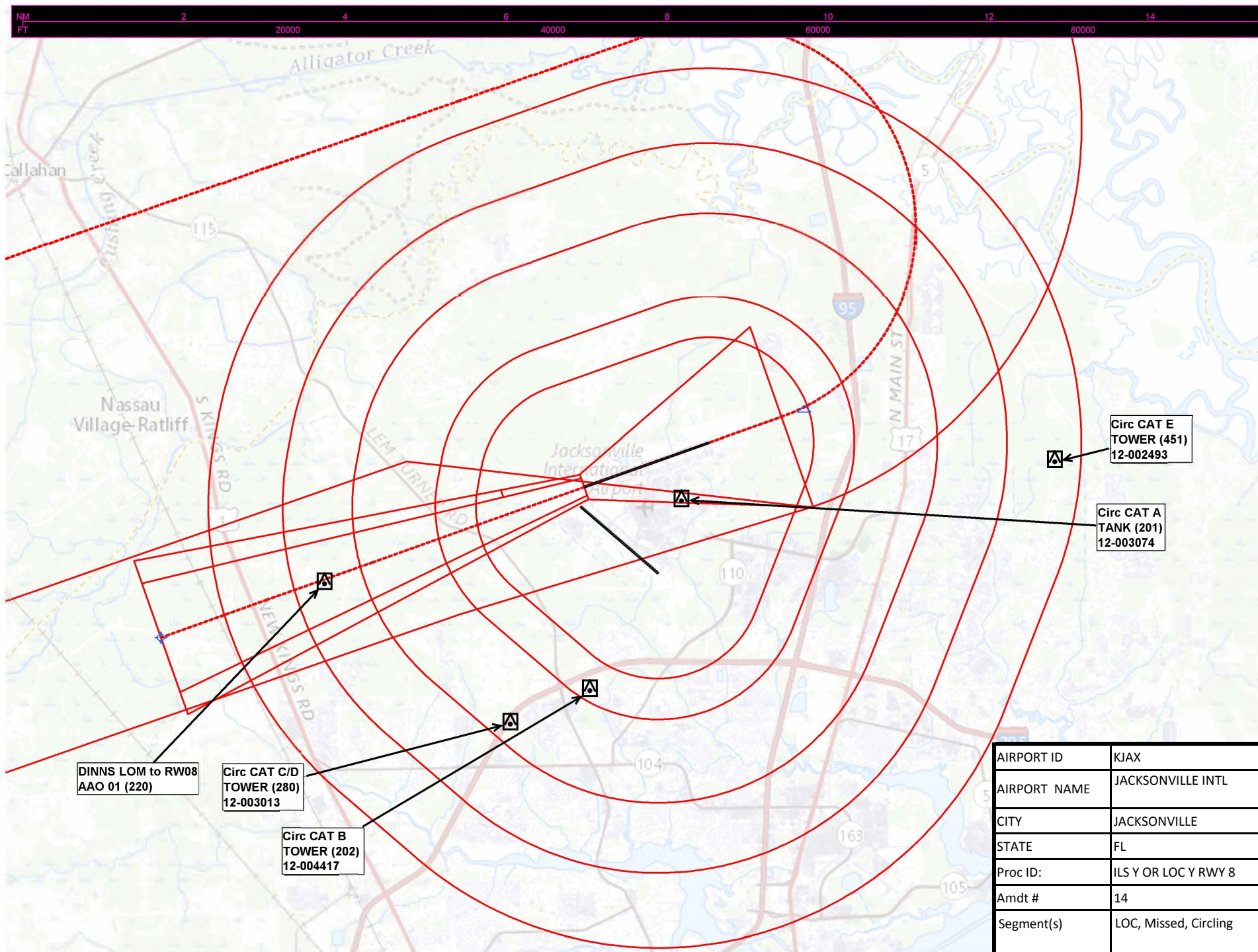


AIRPORT ID	KJAX
AIRPORT NAME	JACKSONVILLE INTL
CITY	JACKSONVILLE
STATE	FL
Proc ID:	ILS Y OR LOC Y RWY 8
Amdt #	14
Segment(s)	ILS, Missed
Scale	1:100,000





AIRPORT ID	KJAX
AIRPORT NAME	JACKSONVILLE INTL
CITY	JACKSONVILLE
STATE	FL
Proc ID:	ILS Y OR LOC Y RWY 8
Amdt #	14
Segment(s)	ILS (Cat II/III)
Scale	1:100,000



AIRPORT ID	KJAX
AIRPORT NAME	JACKSONVILLE INTL
CITY	JACKSONVILLE
STATE	FL
Proc ID:	ILS Y OR LOC Y RWY 8
Amdt #	14
Segment(s)	LOC, Missed, Circling
Scale	1:115,000

