

Flight Procedures Cover Page	Task Action: FLIGHT CHECK	Task Type: IAP	Estimated Chart Date: 10/02/2025	APWS Task ID: 3BB115AF4C5247C097658CF5CA73E84B	APWS Project ID: 3C81EC5B35694B048CB47E87D0ED8B65
Procedure: ILS OR LOC RWY 20L AMDT 7		Enroute: NO	Specialist: Hardison, Dustin		Agreement Number:
Airport ID: KBNA			Airport City: NASHVILLE		State: TN
Facility ID: SSX	Facility Type: ILS	Flight Inspection Remark Type: New FC Slot			
<div>Procedure Comments:</div> <div>DEVELOPED WITH ACTIVE DATA.</div> <div>ESV REQUEST: MRNDA ILS OR LOC RWY 20L KBNA - GS</div> <div>I-SSX/G, RADIAL: 021 DISTANCE: 22 MIN ALT: 60 MAX ALT: 70</div> <div>ESV REQUEST: MRNDA ILS OR LOC RWY 20L KBNA - LOC</div> <div>I-SSX/L, RADIAL: 021 DISTANCE: 22 MIN ALT: 60 MAX ALT: 70</div> <div>Contact Rake McGraw AJV-A422</div> <div>(405)597-8711</div> <div><div>QUALITY 38 CHECKED</div><div>QUALITY 29 CHECKED</div></div>					

**ESV Details**

Originating Office :EFPT ajv-24		Airspace Docket Number :		Request Type :Establish		
<b>Facility Data</b>						
Chart Name:MRNDA ILS OR LOC/DME RWY 20L		City:NASHVILLE		Ident:SSX		State:TN
Type/Class: GS		Frequency: M331.85		Reference Number: 24096448		
<b>Extended Service Volume Data: (Requesting Officer)</b>						
ESV ID	Radial 1	Radial 2	Distance	Minimum Altitude	Maximum Altitude	
FAA 091279 - 002	21		22	60	70	
Requirement: MRNDA ILS OR LOC/DME RWY 20L KBNA						
Signature:Monroe Olivia		Routing Symbol:AJV-E24				Date:09/10/2024
<b>Extended Service Volume Data: (FMO)</b>						
ESV ID	Radial 1	Radial 2	Distance	Minimum Altitude	Maximum Altitude	Action Type
FAA 091279 - 002	21		22	60	70	APPROVE
Requirement/Remarks: MRNDA ILS OR LOC/DME RWY 20L KBNAAPPROVED. FREQ. PROTECTION & FIELD STRENGTH. PENDING FLIGHT INSPECT @ REQUIRED. DIST. & MIN ALT..						
Signature:Love John		Routing Symbol:			Date:09/10/2024	
<b>Extended Service Volume Data: (Super FMO)</b>						
ESV ID	Radial 1	Radial 2	Distance	Minimum Altitude	Maximum Altitude	Action Type
FAA 091279 - 002	21		22	60	70	APPROVE
Requirement/Remarks: MRNDA ILS OR LOC/DME RWY 20L KBNAAPPROVED. FREQ. PROTECTION & FIELD STRENGTH. PENDING FLIGHT INSPECT @ REQUIRED. DIST. & MIN ALT..						
Signature:Hughes Dennis		Routing Symbol:			Date:09/10/2024	
<b>Extended Service Volume Data: (FIFO)</b>						
ESV ID	Radial 1	Radial 2	Distance	Minimum Altitude	Maximum Altitude	Action Type
FAA 091279 - 002	21					
Requirement/Remarks:						
Signature:		Routing Symbol:			Date:	

**ESV Details**

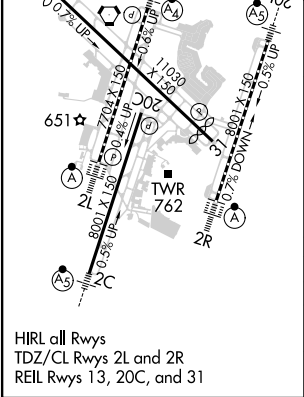
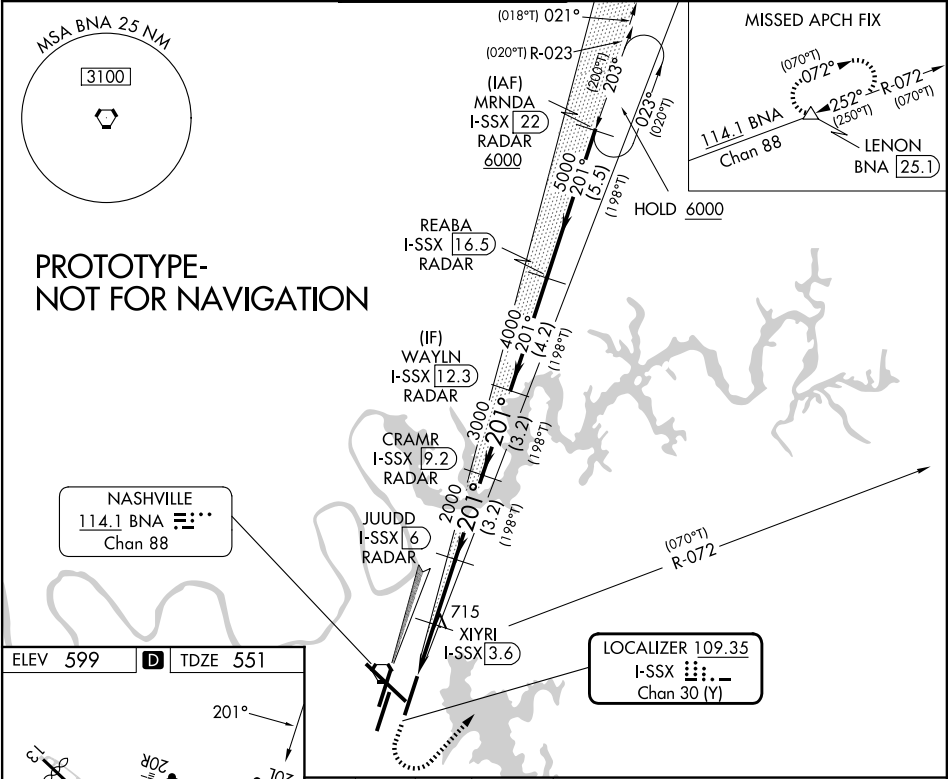
Originating Office :EFPT ajv-24		Airspace Docket Number :		Request Type :Establish		
<b>Facility Data</b>						
Chart Name:MRNDA ILS OR LOC/DME RWY 02L		City:NASHVILLE		Ident:SSX		State:TN
Type/Class: LOC		Frequency: M109.35		Reference Number: 24096424		
<b>Extended Service Volume Data: (Requesting Officer)</b>						
ESV ID	Radial 1	Radial 2	Distance	Minimum Altitude	Maximum Altitude	
FAA 091278 - 002	21		22	60	70	
Requirement: KBNA MRNDA, ILS or LOC/DME RWY 20L						
Signature:Monroe Olivia		Routing Symbol:AJV-E24				Date:09/09/2024
<b>Extended Service Volume Data: (FMO)</b>						
ESV ID	Radial 1	Radial 2	Distance	Minimum Altitude	Maximum Altitude	Action Type
FAA 091278 - 002	21		22	60	70	APPROVE
Requirement/Remarks: KBNA MRNDA, ILS or LOC/DME RWY 20LAPPROVED. FREQ. PROTECTION & FIELD STRENGTH. PENDING FLIGHT INSPECT @ REQUIRED. DIST. & MIN ALT..						
Signature:Love John		Routing Symbol:			Date:09/10/2024	
<b>Extended Service Volume Data: (Super FMO)</b>						
ESV ID	Radial 1	Radial 2	Distance	Minimum Altitude	Maximum Altitude	Action Type
FAA 091278 - 002	21		22	60	70	APPROVE
Requirement/Remarks: KBNA MRNDA, ILS or LOC/DME RWY 20LAPPROVED. FREQ. PROTECTION & FIELD STRENGTH. PENDING FLIGHT INSPECT @ REQUIRED. DIST. & MIN ALT..						
Signature:Hughes Dennis		Routing Symbol:			Date:09/10/2024	
<b>Extended Service Volume Data: (FIFO)</b>						
ESV ID	Radial 1	Radial 2	Distance	Minimum Altitude	Maximum Altitude	Action Type
FAA 091278 - 002	21					
Requirement/Remarks:						
Signature:		Routing Symbol:			Date:	

LOC/DME I-SSX <b>109.35</b> Chan <b>30</b> (Y)	APP CRS <b>201°</b>	Rwy Ldg TDZE Apt Elev <b>8000</b> <b>551</b> <b>599</b>
--	------------------------	--

ILS or LOC RWY 20L  
NASHVILLE INTL (BNA)

DME required. RADAR required for procedure entry.	MALSR	MISSED APPROACH: Climb to 1300, then climbing left turn to 4000 on heading 040° and on BNA VORTAC R-072 to LENON/BNA 25.1 DME and hold.
Simultaneous approach authorized. * RVR 1800 authorized with use of FD or AP or HUD to DA.		

D-ATIS <b>135.1</b>	NASHVILLE APP CON <b>118.4 360.7</b>	NASHVILLE TOWER <b>118.6 257.8</b>	GND CON <b>121.9 348.6</b>	CLNC DEL <b>126.05</b>	CPDLC
------------------------	---	---------------------------------------	-------------------------------	---------------------------	-------



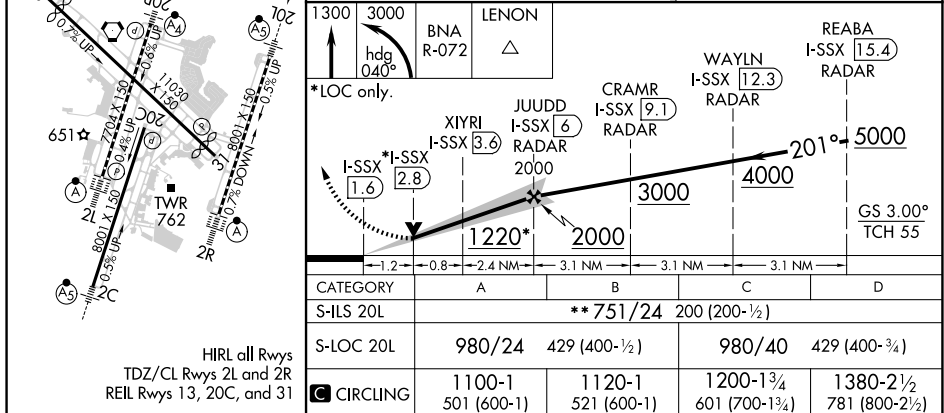
ELEV 599	TDZE 551				
201°					
1300		4000		LENON	
hdd 040°		BNA R-072		△	
JUDD I-SSX [6] RADAR		CRAMR I-SSX [9.2] RADAR		WAYLN I-SSX [12.3] RADAR	
XIYRI I-SSX [3.6]		2000		4000	
1220		2000		GS 3.00° TCH 55	
1.2		0.7		2.5 NM	
A		B		C	
S-ILS 20L*		751/24 200 (200-½)			
S-LOC 20L		980/24 429 (400-½)		980/40 429 (400-¾)	
CIRCLING		1100-1 501 (600-1)		1200-1¾ 601 (700-1¾)	
		1120-1 521 (600-1)		1380-2½ 781 (800-2½)	



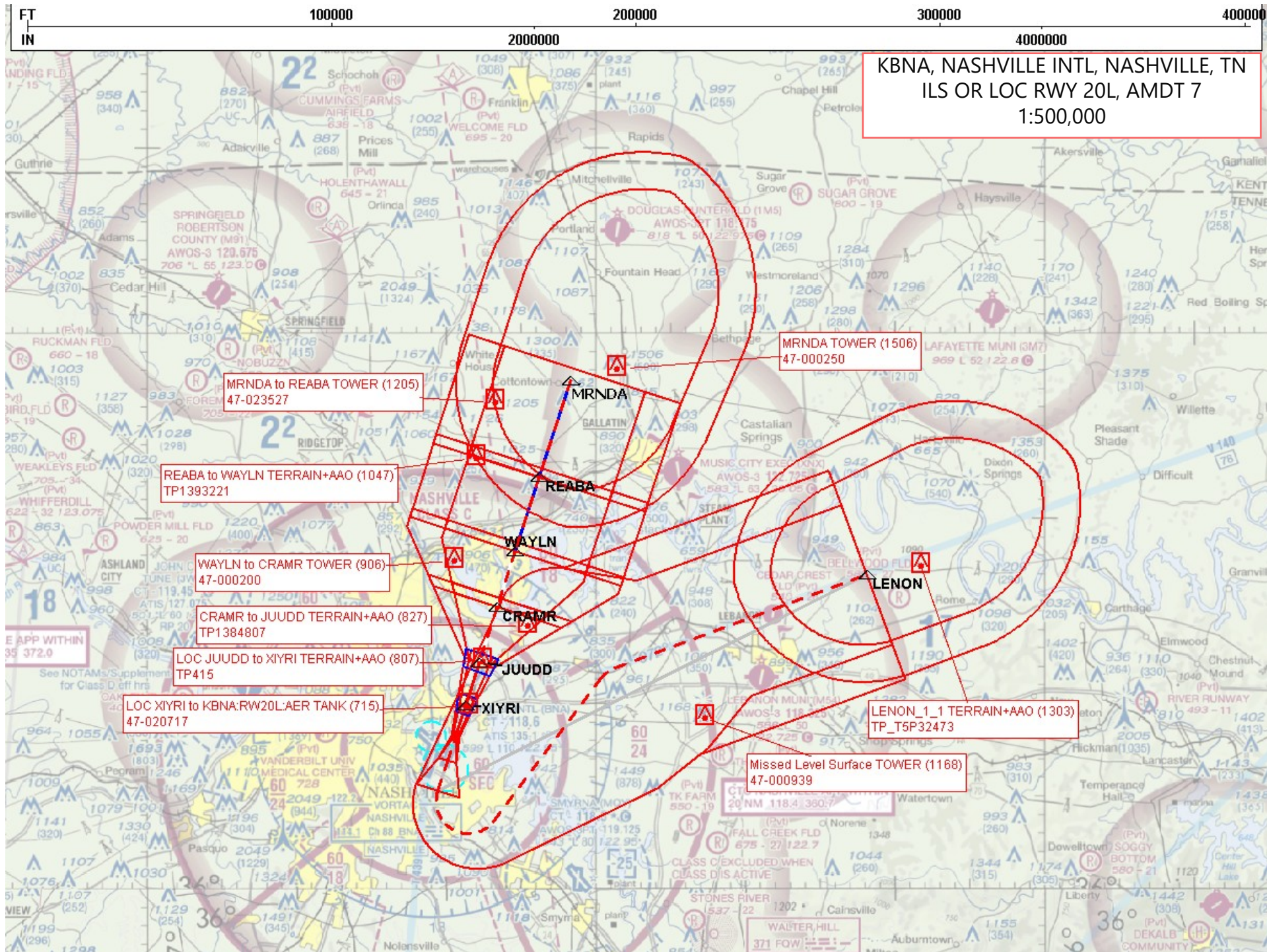
**OLD** ILS or LOC/DME RWY 20L  
NASHVILLE INTL (BNA)

**MISSED APPROACH:** Climb to 1300 then climbing left turn to 3000 on heading 040° and BNA VORTAC R-072 to LENON/BNA 25.1 DME and hold.

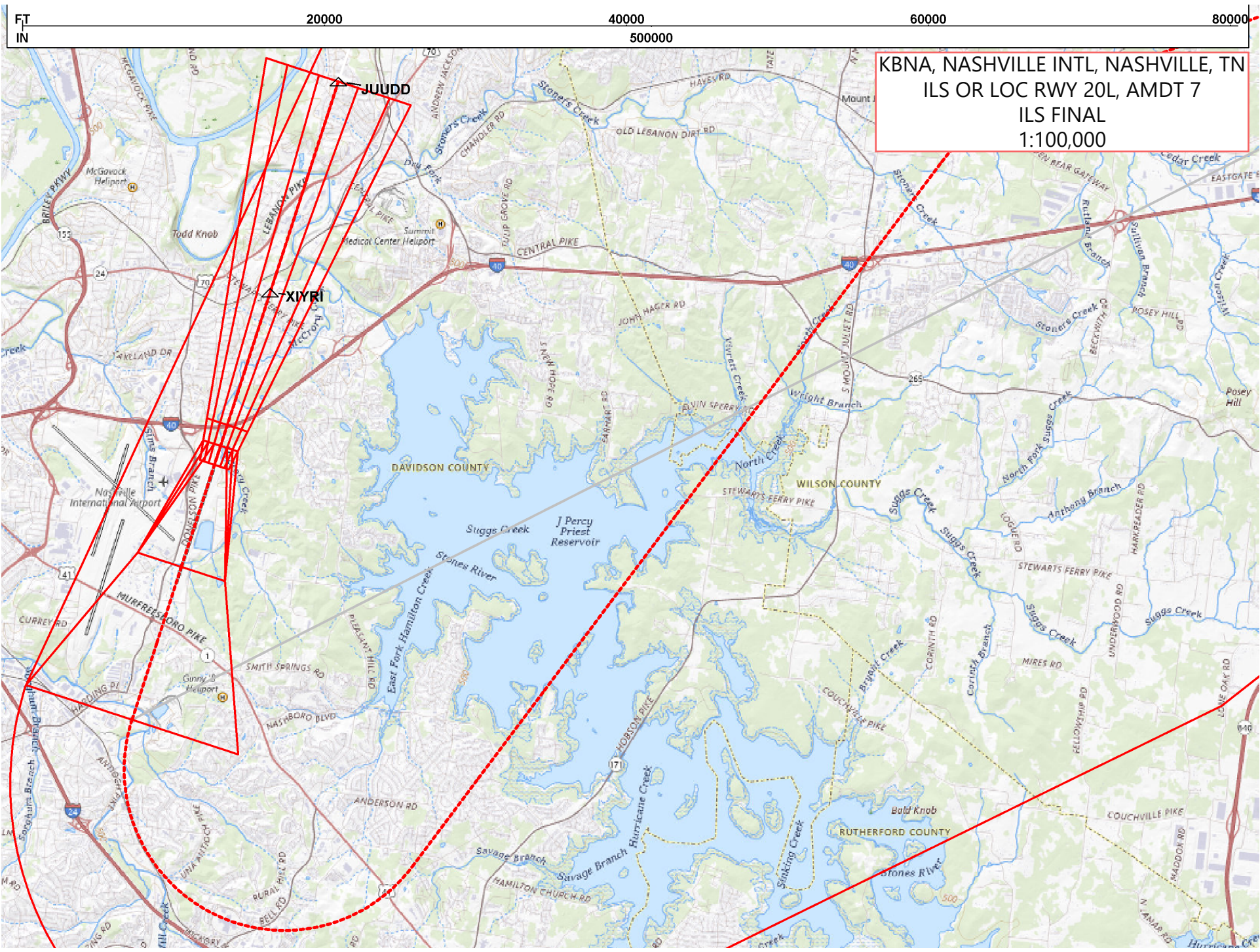
RADAR REQUIRED	MISSED APCH FIX
----------------	-----------------



SE-1, 17 APR 2025 to 15 MAY 2025

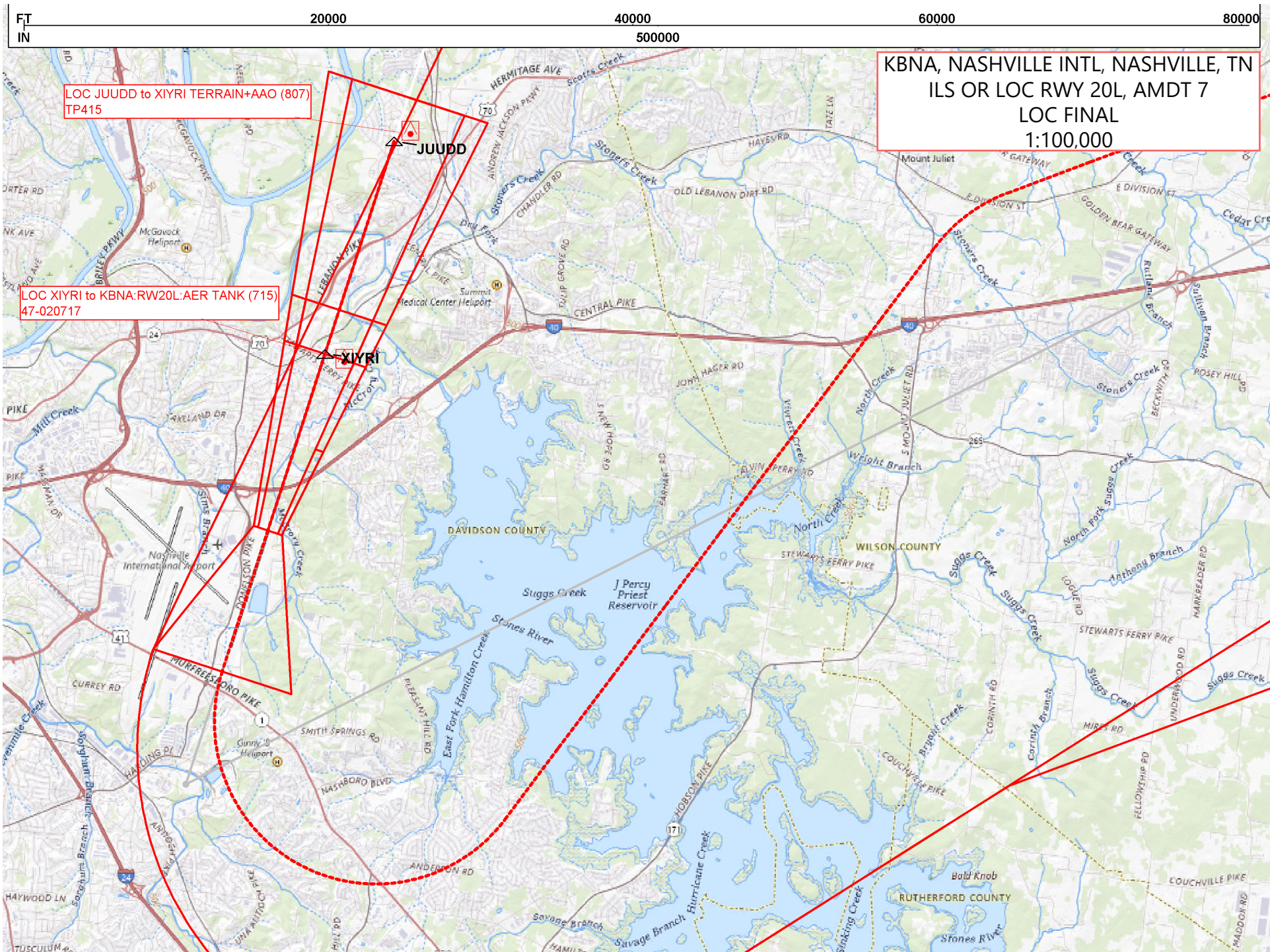






KBNA, NASHVILLE INTL, NASHVILLE, TN  
ILS OR LOC RWY 20L, AMDT 7  
ILS FINAL  
1:100,000







500000

**Circling CAT B TOWER (816)  
47-000499**

**Circling CAT C TOWER (850)  
47-024931**

JUDD

~~△-XIYRI~~

RW20L

**Circling CAT D TERRAIN+AAO (1073)**  
**TP\_CirclingCatD1305656**

**Circling CAT A TREE (774)  
47-090301**