

Flight Procedures Cover Page	Task Action: FLIGHT CHECK	Task Type: IAP	Estimated Chart Date: 10/31/2024	APWS Task ID: 3B38D0B81A494E00A15E2C3FB2EB8AB1	APWS Project ID: 36C83CA03C3D4562B19B382B4E7FA1D0
Procedure: ILS OR LOC RWY 15 AMDT 12		Enroute: NO	Specialist: Neidigh, Jon		Agreement Number:
Airport ID: KDET			Airport City: DETROIT		State: MI
Facility ID: DET	Facility Type: ILS	Flight Inspection Remark Type: New FC Slot			
<div>Procedure Comments: CONTACT CASIMIR TABAKA 405-954-7931</div>					
<div><div>QUALITY 38 CHECKED</div><div>QUALITY 39 CHECKED</div></div>					

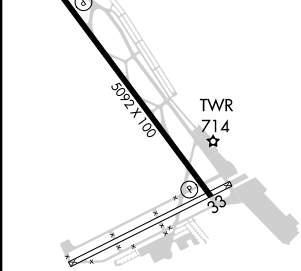
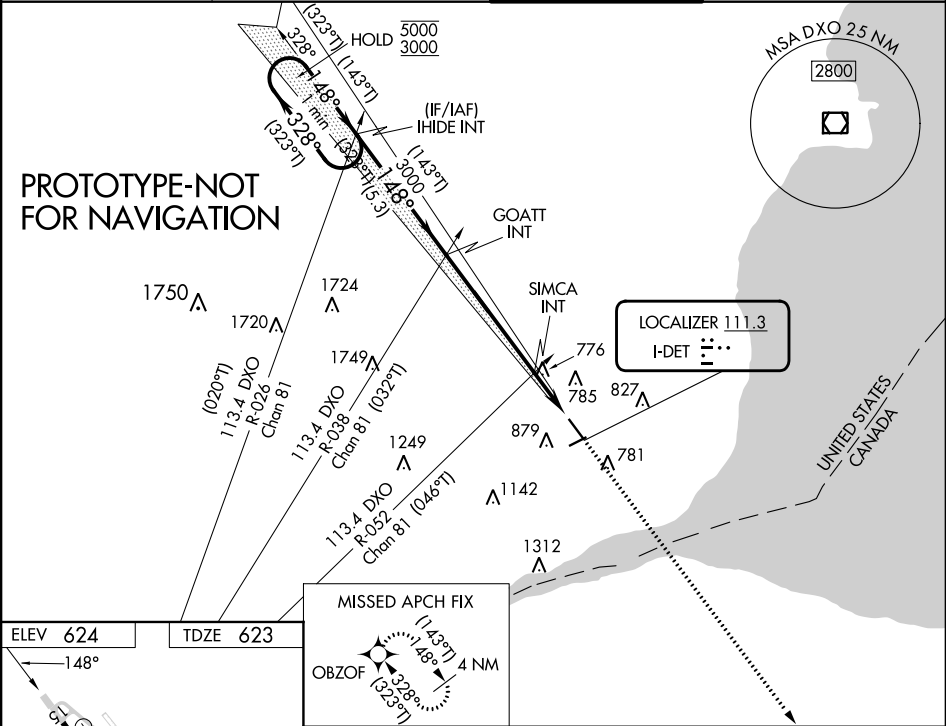
FIPC BASIC FORM								
PROCEDURE: ILS OR LOC RWY 15 AMDT 12			AIRPORT NAME: COLEMAN A YOUNG MUNI		AIRPORT ID: KDET	SPECIAL CONTROL NO: BP-07-214-24		
FAC ID: DET		CITY: DETROIT			ST: MI	ORIG CHART DATE: 10/31/2024		
DFL TYPE: PROC/A	THIRD PARTY: <input type="checkbox"/> YES	EST. TIME ON SITE: 0.4	REIMB. NUMBER:		PTS TASK ID: 3B38D0B81A494E00A15E2C3FB2EB8AB1			
PREFLIGHT NOTES								
REVIEWER:					DATE:			
COMMENTS:					CHECK ONE: <input type="checkbox"/> FLT CK REQ <input type="checkbox"/> NFCR <input type="checkbox"/> REJECT			
							YES	NO
					CPV COMPLETE?		X	
PROCEDURE RESULTS								
INSPECTION DATE: 10/16/2024		CREW #: VN285	N #: N69	INSTRUMENT PROCEDURE STATUS: <input checked="" type="checkbox"/> SAT <input type="checkbox"/> SAT W/CHANGES <input type="checkbox"/> UNSAT		ARINC CODING: <input checked="" type="checkbox"/> SAT <input type="checkbox"/> SAT/GOLD <input type="checkbox"/> UNSAT		
FLIGHT INSPECTOR SIGNATURE: michael a greenwood @ 10/17/2024 05:06			PRINTED NAME: GREENWOOD, MICHAEL AARON			NOTAM INITIATED? <input type="checkbox"/> YES <input checked="" type="checkbox"/> NO		
FLIGHT INSPECTOR REMARKS: Sat as proposed.								
IN-FLIGHT OBSTACLE REPORT								
OBSTRUCTION ID #:	COORDINATES OR LOCATION:		GNSS ALTITUDE (MSL):		BAROMETRIC ALTITUDE (MSL):		HEIGHT ABOVE GROUND LEVEL:	

LOC I-DET	APP CRS	Rwy Idg	5092
111.3	148°	TDZE	623
		Apt Elev	624

ILS or LOC RWY 15
COLEMAN A YOUNG MUNI (DET)

RNP APCH - GPS.	MISSED APPROACH: Climb to 3000 direct OBZOF and hold.
RADAR required for procedure entry.	
<div><div></div><div>Rwy 15 helicopter visibility reduction below ¾ SM NA.</div></div>	

ATIS 124.875	DETROIT APP CON 134.3 284.0	DETROIT CITY TOWER 121.3 257.8	GND CON 121.85
-----------------	--------------------------------	-----------------------------------	-------------------



MIRL Rwy 7-25					
HIRL Rwy 15-33					
REIL Rwy 15 and 33					
FAF to MAP 6.7 NM					
Knots	60	90	120	150	180
Min:Sec	6:42	4:28	3:21	2:41	2:14

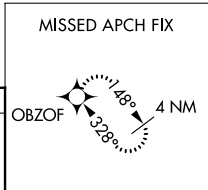
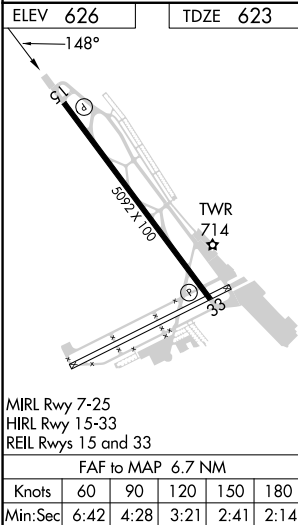
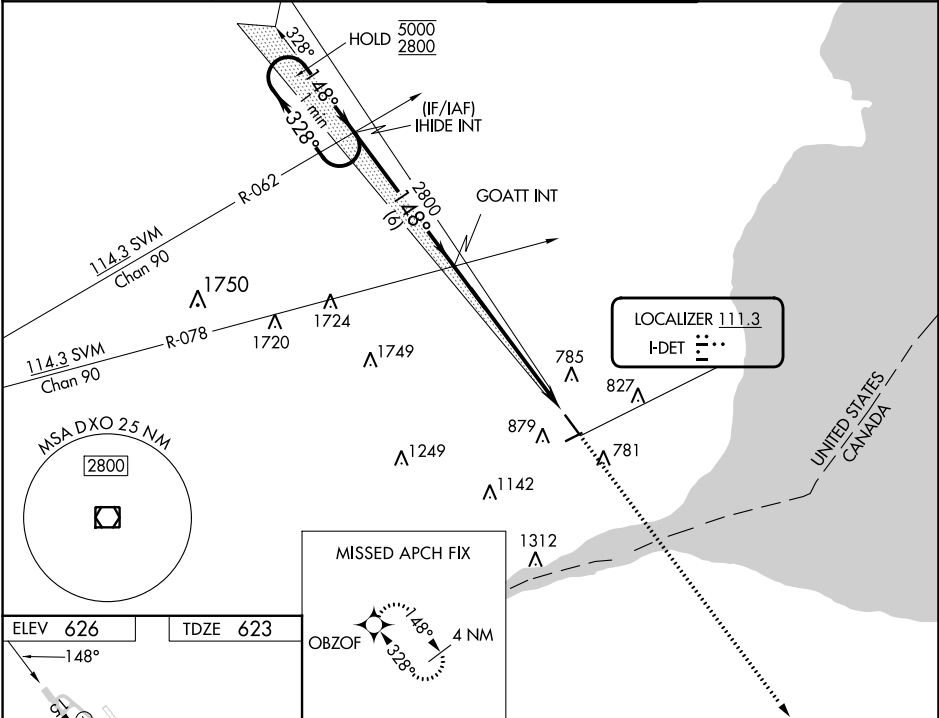
One Minute Holding Pattern		IHIDE INT		GOATT INT		SIMCA INT		3000	OBZOF
5000		3000		3000		1340			
(323°T)		(143°T)		(143°T)					
328°		148°		148°					
(143°T)		(143°T)							
GS 3.00°		TCH 56							
		5.3 NM		5.2 NM		2.1 NM			
CATEGORY	A		B		C		D		
S-ILS 15			910-7/8		287 (300-7/8)				
S-LOC 15	1040-1		417 (500-1)		1040-1 1/8		417 (500-1 1/8)		
CIRCLING	1180-1		556 (600-1)		1320-2		1500-2 3/4		
					696 (700-2)		876 (900-2 3/4)		

LOC I-DET 111.3	APP CRS 148°	Rwy Idg TDZE Apt Elev	5092 623 626
---------------------------	------------------------	-----------------------------	---

ILS or LOC RWY 15
COLEMAN A YOUNG MUNI (DET)

RNP APCH - GPS.	MISSED APPROACH: Climb to 3000 direct OBZOF and hold.
RADAR required for procedure entry.	
Circling to Rwy 7, 25 NA at night. Rwy 15 helicopter visibility reduction below ¾ SM NA.	

ATIS 124.875	DETROIT APP CON 134.3 284.0	DETROIT CITY TOWER 121.3 257.8	GND CON 121.85
------------------------	---------------------------------------	--	--------------------------



One Minute Holding Pattern	IHIDE INT	GOATT INT	3000	OBZOF
5000 2800	328° 148°	2800	↑	✦
GS 3.00° TCH 56	6 NM	6.7 NM		
CATEGORY	A	B	C	D
S-ILS 15	910-7/8 287 (300-7/8)			
S-LOC 15	1160-1 537 (600-1)		1160-1½ 537 (600-1½)	
CIRCLING	1180-1 554 (600-1)		1320-2 694 (700-2) 1500-2¾ 874 (900-2¾)	

KDET, COLEMAN A YOUNG MUNI
DETROIT, MI
ILS OR LOC RWY 15, AMDT 12
ILS
1:500,000

IHIDE_HILPT
TERRAIN+AAO (1460)

IHIDE to GOATT
TERRAIN+AAO (1139)

ILS
TREE (712)
26-138973

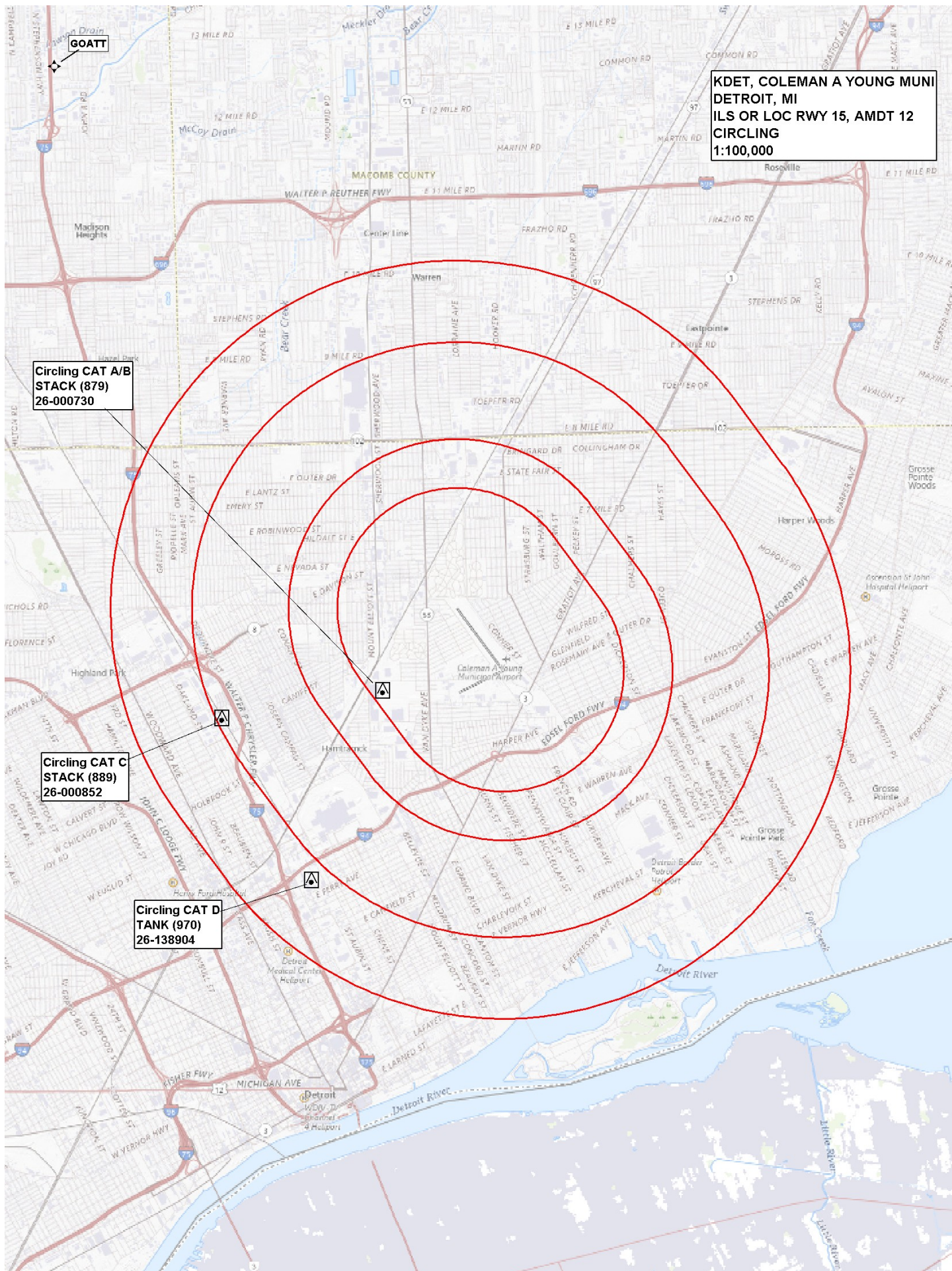
ILS MISSED APCH
TREE (710)
26-094110

OBZOF_MA_HOLDING
WINDMILL (1122)
CA-027052

Missed Level Surface
TOWER (934)
CA-000278

OBZOF

GROSSE ILE
419 RYS

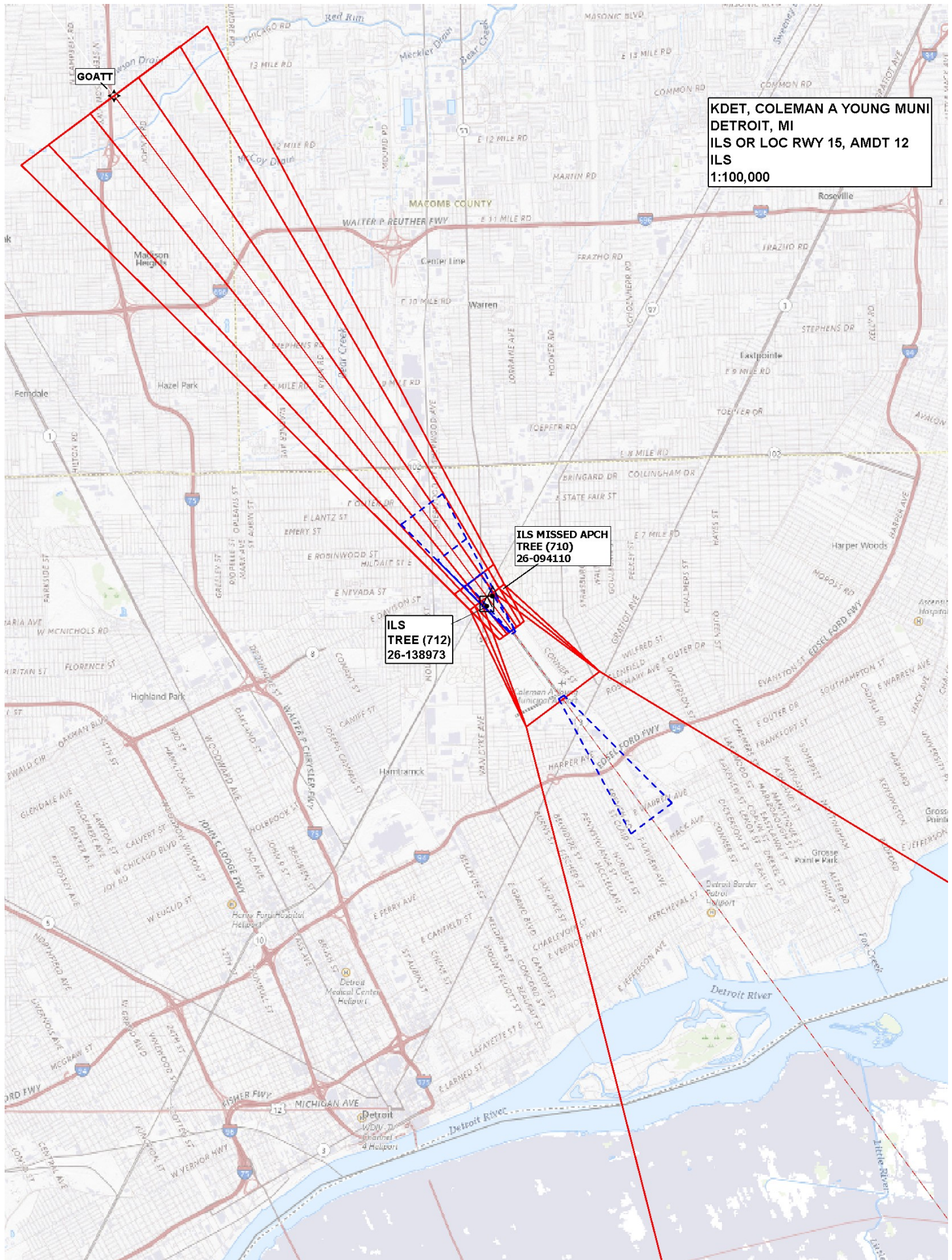


**KDET, COLEMAN A YOUNG MUNI
DETROIT, MI
ILS OR LOC RWY 15, AMDT 12
CIRCLING
1:100,000**

**Circling CAT A/B
STACK (879)
26-000730**

**Circling CAT C
STACK (889)
26-000852**

**Circling CAT D
TANK (970)
26-138904**



KDET, COLEMAN A YOUNG MUNI
DETROIT, MI
ILS OR LOC RWY 15, AMDT 12
ILS
1:100,000

ILS MISSED APCH
TREE (710)
26-094110

ILS
TREE (712)
26-138973

KDET, COLEMAN A YOUNG MUNI
DETROIT, MI
ILS OR LOC RWY 15, AMDT 12
LOC
1:100,000

LOC:GOATT to SIMCA
TERRAIN+AAO (860)

LOC KDET:RW15:AER
7:1 Excluded Obs
TERRAIN+AAO (830)

SIMCA

LOC:SIMCA to KDET:RW15:AER
TOWER (776)
26-139465

