

**FEDERAL AVIATION ADMINISTRATION
FLIGHT STANDARDS SERVICE
CHARTED VISUAL FLIGHT PROCEDURE (CVFP)**

Bearings, headings, courses, tracks and radials are magnetic. Elevations and altitudes are in feet, MSL. Altitudes are minimum altitudes unless otherwise indicated.
Ceilings are in feet above airport elevation. Distances are in nautical miles. Visibilities are in statute miles or feet RVR unless otherwise indicated.

| <u>AIRPORT ID</u> | <u>CVFP NAME</u> | <u>ORIG/AMDT</u> | <u>CITY</u> | <u>STATE</u> | <u>SUPERSEDES</u> | <u>AMDT NO.</u> | <u>DATED</u> | <u>EFFECTIVE DATE</u> |
|-------------------|---------------------|------------------|-------------|--------------|---------------------|-----------------|--------------|-----------------------|
| KDCA | RIVER VISUAL RWY 19 | 6 | WASHINGTON | DC | RIVER VISUAL RWY 19 | 5 | 09 Sep 99 | ROUTINE |

VISUAL ARRIVAL ROUTE:

| FROM (Visual Landmarks) | TO (Visual Landmarks) | COURSE (if desired) | ALTITUDE (if needed) Show if for Class B |
|--|----------------------------|---------------------|--|
| DAVID W. TAYLOR NAVAL SHIP RESEARCH AND DEVELOPMENT CENTER | CHAIN BRIDGE | | 1800 (FOR CLASS B) |
| CHAIN BRIDGE | ABEAM GEORGETOWN RESERVOIR | | 1500 (FOR CLASS B) |
| ABEAM GEORGETOWN RESERVOIR | KEY BRIDGE | | 900 (FOR CLASS B) |
| KEY BRIDGE | RWY 19 | | |

WEATHER MINIMA:

CEILING: 3500 VISIBILITY: 3

NOTES:

CHART NOTE: RADAR REQUIRED
CHART NOTE: CLEARANCE FOR VISUAL APPROACH DOES NOT AUTHORIZE PENETRATION OF P-56
CHART NOTE: PROHIBITED AREA (P-56) 1.5 NM NORTH OF DCA - AVOID SURFACE TO 18,000 MSL
CHART NOTE: RECOMMENDED ALTITUDES FOR NOISE ABATEMENT

SUPPLEMENTARY NAVAID / WAYPOINT INFORMATION AND ADDITIONAL LANDMARKS:

CHART ALTITUDE 3000 AT DAVID W. TAYLOR NAVAL SHIP RESEARCH AND DEVELOPMENT CENTER
CHART WITH THE CORRESPONDING LANDMARKS: GEORGETOWN RESERVOIR/RORRK
CHART: AMERICAN LEGION MEMORIAL BRIDGE, DALECARLIA RESERVOIR, ROOSEVELT BRIDGE, MEMORIAL BRIDGE, ROCHAMBEAU BRIDGE, DARIC, GREYZ, P-56

VERTICAL GUIDANCE NAVAID AND ANGLE: VGS1 INDICATOR 3 DEGREES

DESCRIPTION OF ROUTE:

AIRCRAFT MAY VISUALLY FOLLOW THE RIVER TO THE AIRPORT, OR MAY PROCEED VIA THE RNAV (GPS) Y RWY 19 TO RORRK, OR VIA THE RNAV (RNP) Z RWY 19 TO GREYZ, THEN FOLLOW THE RIVER TO THE AIRPORT.

COMMUNICATION:

POTOMAC APPROACH CONTROL TOWER, TOWER, GND CNTL, CLNC DLVY AND ATIS

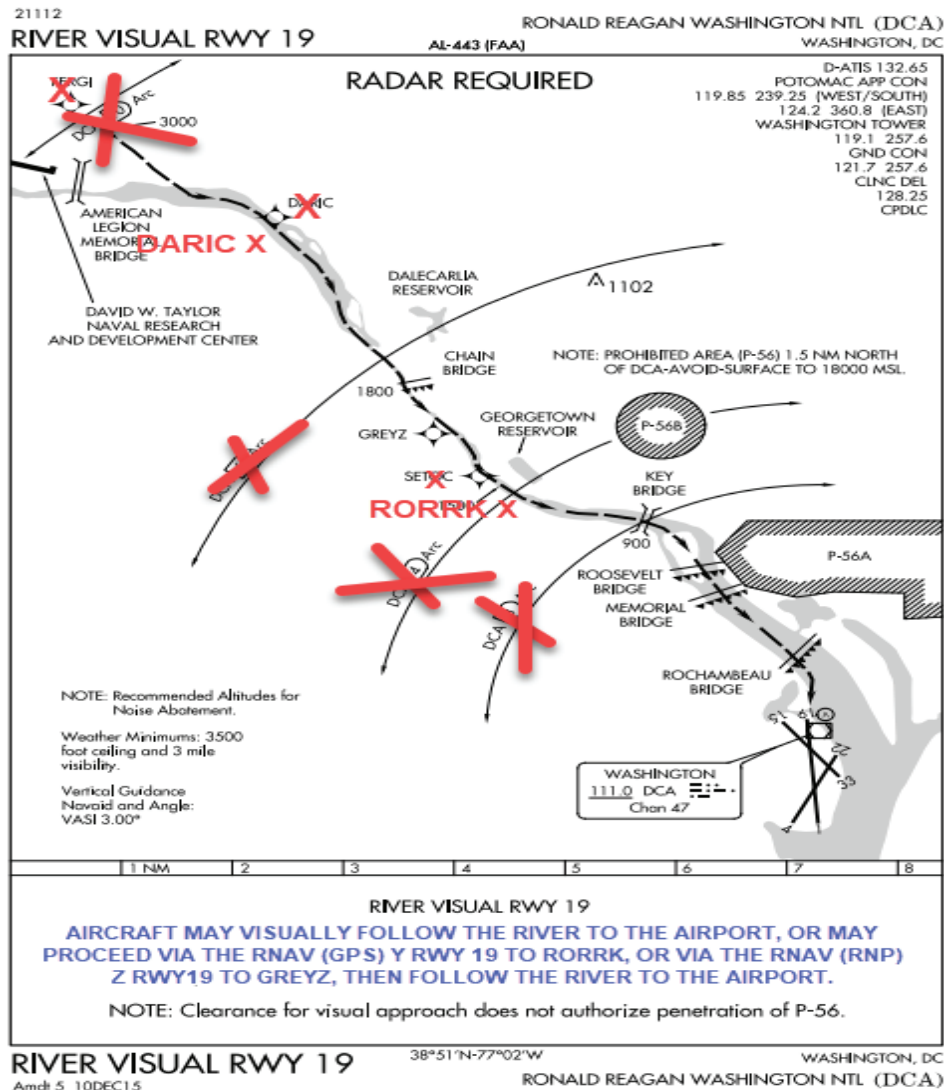


**FEDERAL AVIATION ADMINISTRATION
FLIGHT STANDARDS SERVICE
CHARTED VISUAL FLIGHT PROCEDURE (CVFP)**

Bearings, headings, courses, tracks and radials are magnetic. Elevations and altitudes are in feet, MSL. Altitudes are minimum altitudes unless otherwise indicated.
Ceilings are in feet above airport elevation. Distances are in nautical miles. Visibilities are in statute miles or feet RVR unless otherwise indicated.

| AIRPORT ID | CVFP NAME | ORIG/AMDT | CITY | STATE | SUPERSEDES | AMDT NO. | DATED | EFFECTIVE DATE |
|------------|---------------------|-----------|------------|-------|---------------------|----------|-----------|----------------|
| KDCA | RIVER VISUAL RWY 19 | 6 | WASHINGTON | DC | RIVER VISUAL RWY 19 | 5 | 09 Sep 99 | ROUTINE |

GRAPHIC DEPICTION:



QUALITY
26
CHECKED

**FEDERAL AVIATION ADMINISTRATION
FLIGHT STANDARDS SERVICE
CHARTED VISUAL FLIGHT PROCEDURE (CVFP)**

Bearings, headings, courses, tracks and radials are magnetic. Elevations and altitudes are in feet, MSL. Altitudes are minimum altitudes unless otherwise indicated.
Ceilings are in feet above airport elevation. Distances are in nautical miles. Visibilities are in statute miles or feet RVR unless otherwise indicated.

| <u>AIRPORT ID</u> | <u>CVFP NAME</u> | <u>ORIG/AMDT</u> | <u>CITY</u> | <u>STATE</u> | <u>SUPERSEDES</u> | <u>AMDT NO.</u> | <u>DATED</u> | <u>EFFECTIVE DATE</u> |
|-------------------|---------------------|------------------|-------------|--------------|---------------------|-----------------|--------------|-----------------------|
| KDCA | RIVER VISUAL RWY 19 | 6 | WASHINGTON | DC | RIVER VISUAL RWY 19 | 5 | 09 Sep 99 | ROUTINE |

FLIGHT INSPECTED BY:

GARY BELL

ORGANIZATION:

FPO

DATE:

04/30/2024

FLIGHT INSPECTION
SIGNATURE:

Digitally signed by

CASIMIR L TABAKA

May 06, 2024

DEVELOPED BY:

MATTHEW R. FISHER

FAA/POTOMAC
TRACON

3/6/2023

DEVELOPED BY
SIGNATURE:

MATTHEW FISHER

Digitally signed by MATTHEW FISHER
Date: 2023.03.06 12:36:36 -05'00'

APPROVED BY:

CAS TABAKA, MANAGER

AJV-A432

APPROVED BY
SIGNATURE:

Digitally signed by

CASIMIR L TABAKA

Jan 24, 2024

CHANGES - REASONS:

1. ADDED OPTION TO NAVIGATE VIA RNAV (GPS) Y RWY 19 - JOINT REQUEST BY ATC, INDUSTRY AND DCA CWG.
2. DELETED FERGI AND SETOC WAYPOINTS - JOINT REQUEST BY ATC, INDUSTRY AND DCA CWG.
3. RELOCATED DARIC AND GREYZ WAYPOINTS - JOINT REQUEST BY ATC, INDUSTRY AND DCA CWG.
4. ADDED RORRK WAYPOINT - JOINT REQUEST BY ATC, INDUSTRY AND DCA CWG.
5. REMOVED DME ARCS - NO LONGER NEEDED.
6. CHANGED FIRST VISUAL ROUTE POINT FROM "DAVID W. TAYLOR NAVAL RESEARCH AND DEVELOPMENT CENTER" TO "DAVID W. TAYLOR NAVAL SHIP RESEARCH AND DEVELOPMENT CENTER" - CONSISTENT WITH DESCRIPTION IN SUPPLEMENTARY INFORMATION.

