

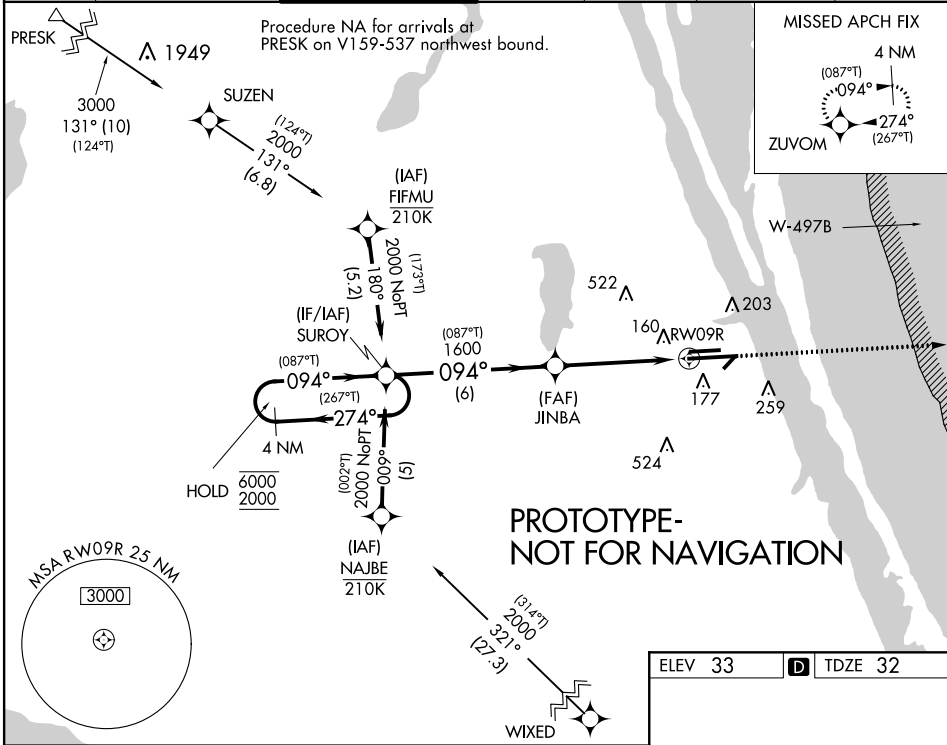
Flight Procedures Cover Page	Task Action: FLIGHT CHECK	Task Type: IAP	Estimated Chart Date: 12/26/2024	APWS Task ID: 3AED8C11E57545DE8465DB6B63424C3D	APWS Project ID: B98107FC0E7E462BA2CBE0816D2A4C74
Procedure: RNAV (GPS) RWY 9R AMDT 2		Enroute: NO	Specialist: Young, Silvia		Agreement Number:
Airport ID: KMLB			Airport City: MELBOURNE		State: FL
Facility ID:	Facility Type:	Flight Inspection Remark Type: New FC Slot			
<div>Procedure Comments:</div> <div>ACTIVE AIRNAV DATA UTILIZED FOR KMLB AND RWYS.</div> <div>CONTACT CASIMIR TABAKA (405) 954 7931.</div> <div><div>Digitally signed by</div><div>JOSEPH L ZEDER</div><div>Sep 25, 2024</div></div> <div><div>QUALITY 33 CHECKED</div><div>QUALITY 10 CHECKED</div></div>					

FIPC BASIC FORM							
PROCEDURE: RNAV (GPS) RWY 9R AMDT 2			AIRPORT NAME: MELBOURNE ORLANDO INTL		AIRPORT ID: KMLB	SPECIAL CONTROL NO: AG-08-168-24	
FAC ID: KMLB09R.02		CITY: MELBOURNE			ST: FL	ORIG CHART DATE: 12/26/2024	
DFL TYPE: PROC/S	THIRD PARTY: <input type="checkbox"/> YES	EST. TIME ON SITE: 0.4	REIMB. NUMBER:		PTS TASK ID: 3AED8C11E57545DE8465DB6B63424C3D		
PREFLIGHT NOTES							
REVIEWER:					DATE:		
COMMENTS:					CHECK ONE:		
					<input type="checkbox"/> FLT CK REQ <input type="checkbox"/> NFCR <input type="checkbox"/> REJECT		
							YES
					CPV COMPLETE?		X
PROCEDURE RESULTS							
INSPECTION DATE: 09/20/2024		CREW #: VN534	N #: N81	INSTRUMENT PROCEDURE STATUS: <input checked="" type="checkbox"/> SAT <input type="checkbox"/> SAT W/CHANGES <input type="checkbox"/> UNSAT		ARINC CODING: <input checked="" type="checkbox"/> SAT <input type="checkbox"/> SAT/GOLD <input type="checkbox"/> UNSAT	
FLIGHT INSPECTOR SIGNATURE: william m yingling @ 09/20/2024 16:32			PRINTED NAME: YINGLING, WILLIAM MARK				NOTAM INITIATED? <input type="checkbox"/> YES <input checked="" type="checkbox"/> NO
FLIGHT INSPECTOR REMARKS: RNAV (GPS) RWY 9R AMDT 2, Procedure SAT							
IN-FLIGHT OBSTACLE REPORT							
OBSTRUCTION ID #:	COORDINATES OR LOCATION:		GNSS ALTITUDE (MSL):		BAROMETRIC ALTITUDE (MSL):		HEIGHT ABOVE GROUND LEVEL:

WAAS CH 60901 W09B	APP CRS 094°	Rwy Idg 10181 TDZE 32 Apt Elev 33
--	------------------------	--

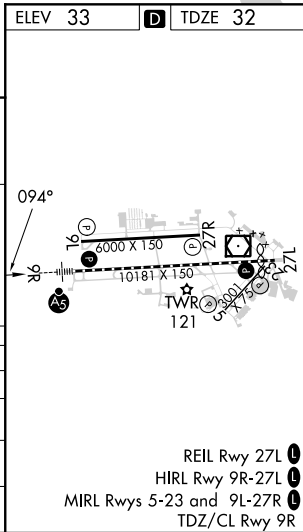
RNAV (GPS) RWY 9R
MELBOURNE ORLANDO INTL (MLB)

RNP APCH - GPS. For uncompensated Baro-VNAV systems, LNAV/VNAV NA below 2°C or above 54°C.				MALSR	MISSED APPROACH: Climb to 2000 direct ZUVM and hold.	
ATIS 132.55	ORLANDO APP CON 132.65 281.425	MELBOURNE TOWER ★ 118.2 (CTAF) 0 257.8	GND CON 121.9	CLNC DEL 121.9	CLNC DEL 132.65 (When twr closed)	UNICOM 122.95



PROTOTYPE-
NOT FOR NAVIGATION

4 NM Holding Pattern		VGSI and RNAV glidepath not coincident (VGSI Angle 3.00/TCH 83).		2000	ZUVM
SUROY		JINBA		1600	1.1 NM to RW09R
6000 ← 274° (267°T)		1600		RW09R	
2000 → 094° (087°T)		1600		1.1 NM	
GP 3.00° TCH 55		6 NM		3.6 NM	
CATEGORY	A	B	C	D	
LPV DA	232/18		200 (200-½)		
LNAV/VNAV DA	427/35		395 (400-¾)		
LNAV MDA	480/24	448 (500-½)	480/45	448 (500-¾)	
CIRCLING	500-1 467 (500-1)	560-1 527 (600-1)	680-1¾ 647 (700-1¾)	880-2¾ 847 (900-2¾)	



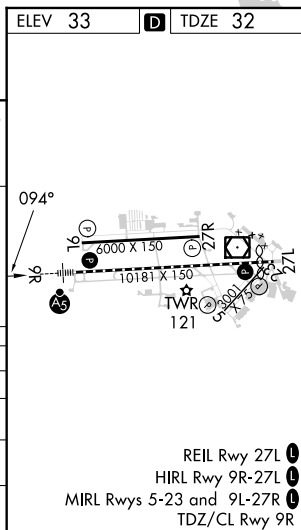
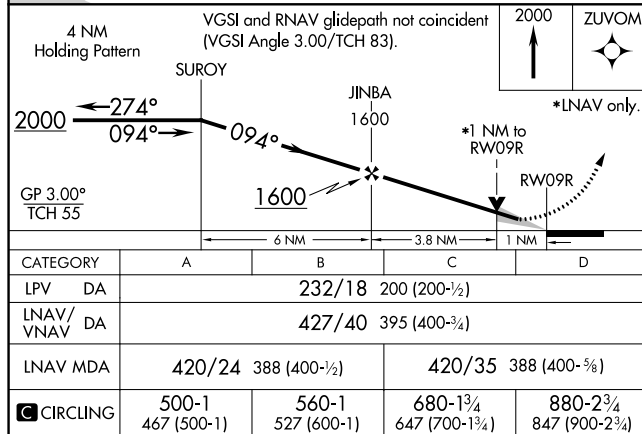
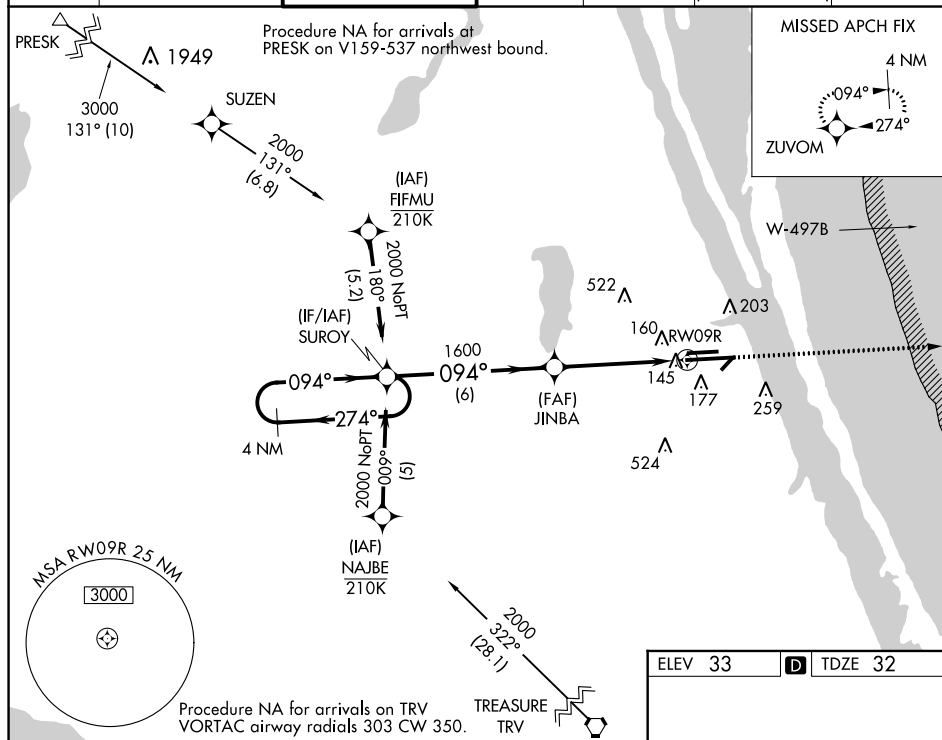
WAAS CH 60901 W09B	APP CRS 094°	Rwy Idg 10181 TDZE 32 Apt Elev 33
--	------------------------	--

RNAV (GPS) RWY 9R

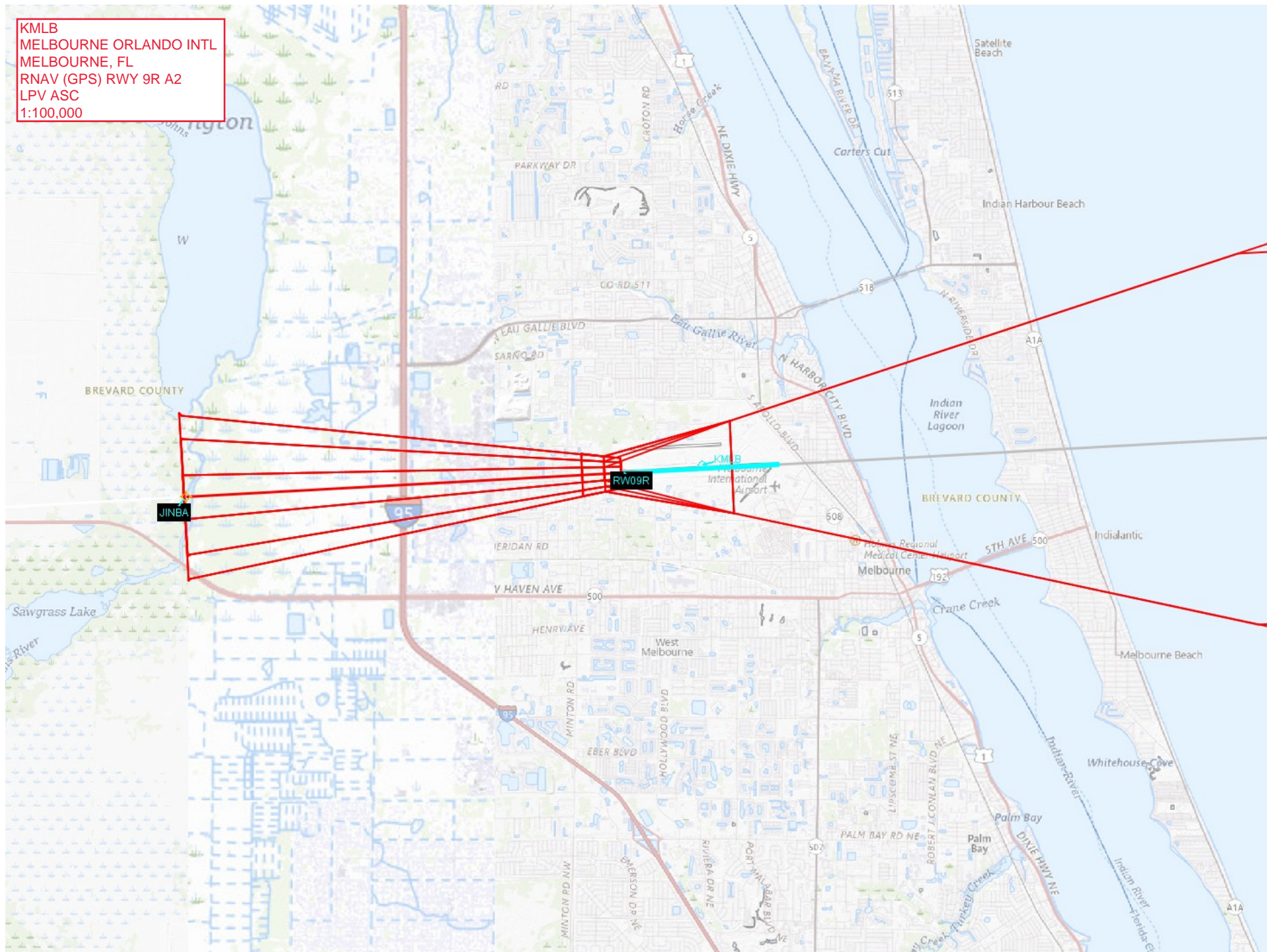
MELBOURNE ORLANDO INTL (MLB)

RNP APCH.	For uncompensated Baro-VNAV systems, LNAV/VNAV NA below -15°C or above 54°C.	MALSR	MISSED APPROACH: Climb to 2000 direct ZUVOM and hold.
-----------	--	-------	---

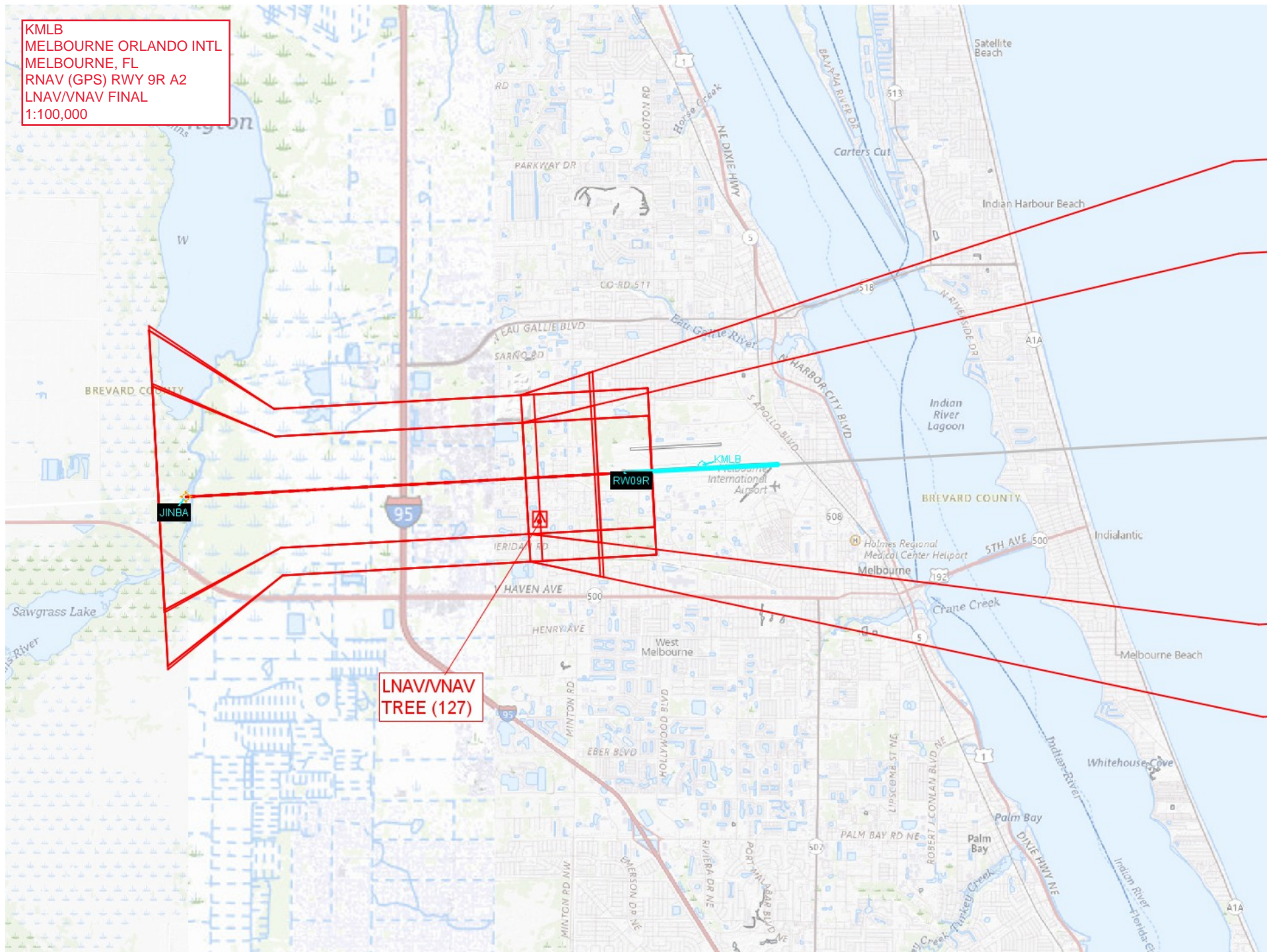
ATIS 132.55	ORLANDO APP CON 132.65 281.425	MELBOURNE TOWER ★ 118.2(CTAF) 0 257.8	GND CON 121.9	CLNC DEL 121.9	CLNC DEL 132.65 (When twr closed)	UNICOM 122.95
-----------------------	--	---	-------------------------	--------------------------	--	-------------------------



KMLB
MELBOURNE ORLANDO INTL
MELBOURNE, FL
RNAV (GPS) RWY 9R A2
LPV ASC
1:100,000



KMLB
MELBOURNE ORLANDO INTL
MELBOURNE, FL
RNAV (GPS) RWY 9R A2
LNAV/VNAV FINAL
1:100,000



KMLB
MELBOURNE ORLANDO INTL
MELBOURNE, FL
RNAV (GPS) RWY 9R A2
LNAV FINAL & CIRCLING
1:100,000

LNAV JINBA to KMLB:RW09R:AER
AAO (227)

Circling CAT A
BUILDING (194) 12-002246

Circling CAT B
TOWER (259) 12-000555

Circling CAT C
TOWER (324) 12-002260

Circling CAT D
TOWER (525) 12-002052

